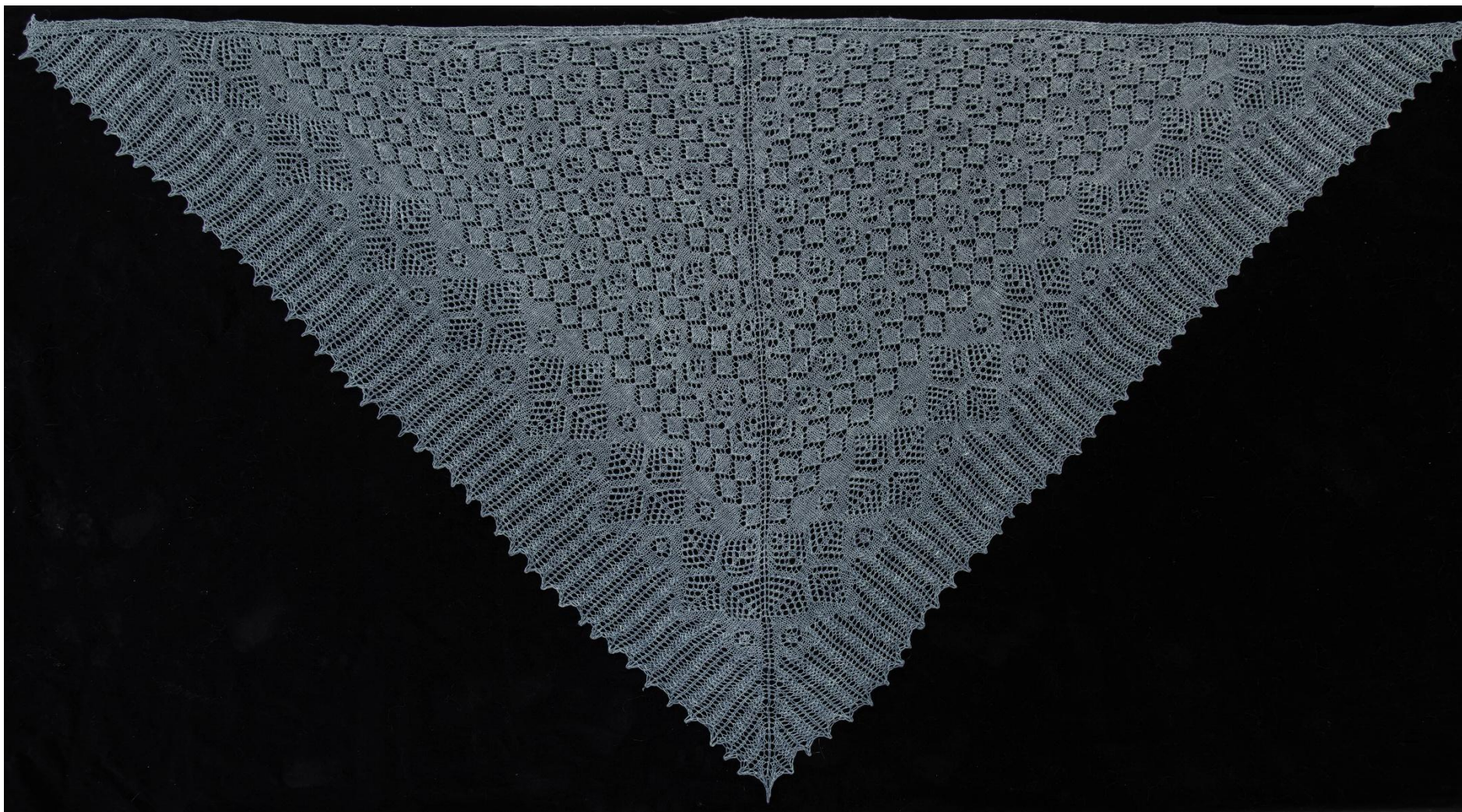


# Undecided Shawl

By Denise E. M. Bartels





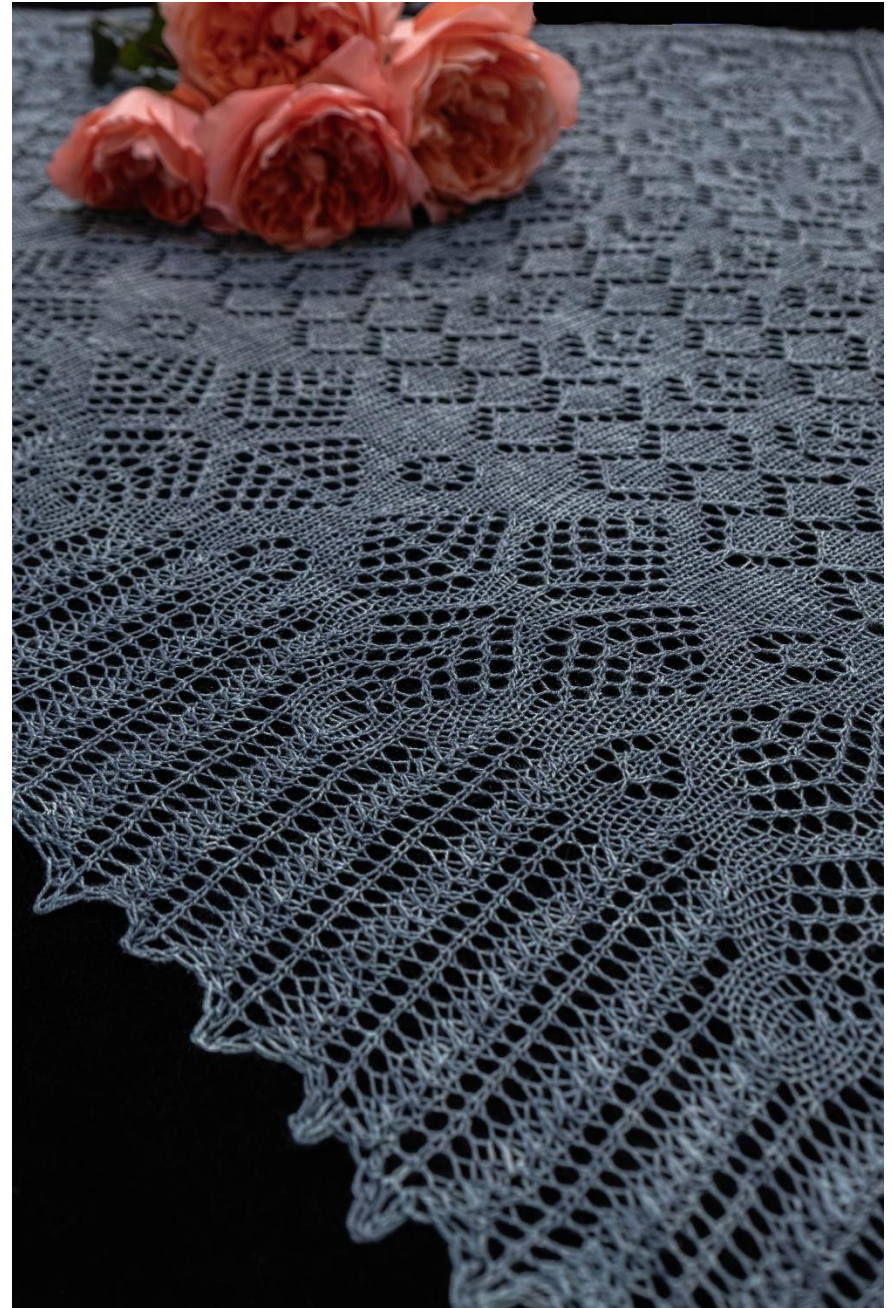
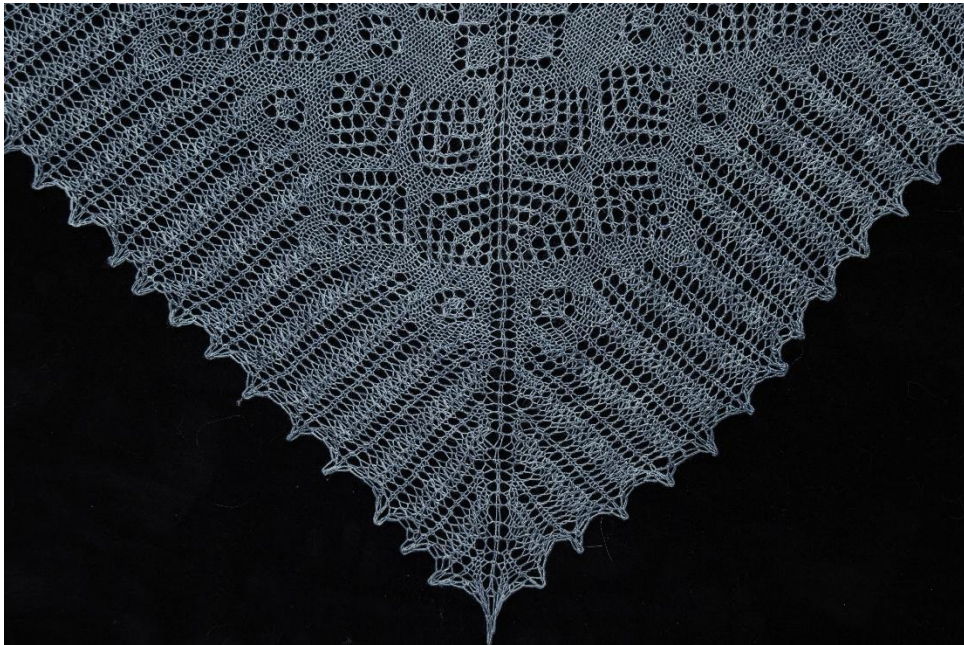
Yarn - Lace weight. I used a hand dyed, 100% silk yarn.

Yardage - Approximately 1000 meters (1093 yards).

Needles - I used US 1 (2.25 mm) but I knit very loosely.

Depth at Center - 37 inches.

Length - 72 inches.



The yarn I used for this shawl was hand dyed by a friend and she named the colorway Undecided. Not only did I fall in love with the color but the name is a perfect fit for me as I am not known for my decision making skills.

This is a triangular shawl that is knit from the top down with increases on every right-side row, worked at the edges and each side of the center stitch.

Start with a tab cast-on. I like a seed stitch edging instead of a garter stitch one because the gauge is closer to the stockinette gauge and I like the texture. Cast on 5 stitches and do 6 rows of k1, p1, k1, p1, k1. On the seventh row, k1, p1, k1, p1, k1, turn work 90 degrees and pick up 3 stitches along the side of the little tab you just made, turn another 90 degrees and pick up 5 stitches along the cast-on edge. You can also start with a provisional cast-on to give you the final 5 stitches.

All wrong-side (even) rows are k1, p1, k1, p1, k1, purl to last 5 stitches, k1, p1, k1, p1, k1.

Rows 1 - 70: K1, p1, k1, p1, k1, Chart 1, k1, Chart 1, k1, p1, k1, p1, k1.

Rows 71 - 114: K1, p1, k1, p1, k1, Chart 2, k1, Chart 2, k1, p1, k1, p1, k1.

Rows 115 - 182: K1, p1, k1, p1, k1, Chart 3, k1, Chart 3, k1, p1, k1, p1, k1.

Rows 183 - 239: K1, p1, k1, p1, k1, Chart 4a, Chart 4b, k1, Chart 4a Chart 4b, k1, p1, k1, p1, k1.

Bind off loosely and block. I bound off on the purl side using the bind off P1, \*p1, slip stitches back to left needle and p2tog, repeat from \*.

Note: The symbol V is used to indicate a kfb (knit in front and back), not a slip stitch. It adds an extra stitch that in this pattern is removed in the next pattern row by an extra decrease. Don't worry if your stitch count does not match the number of stitches shown in the chart for rows with the kfb stitch.



Chart 1

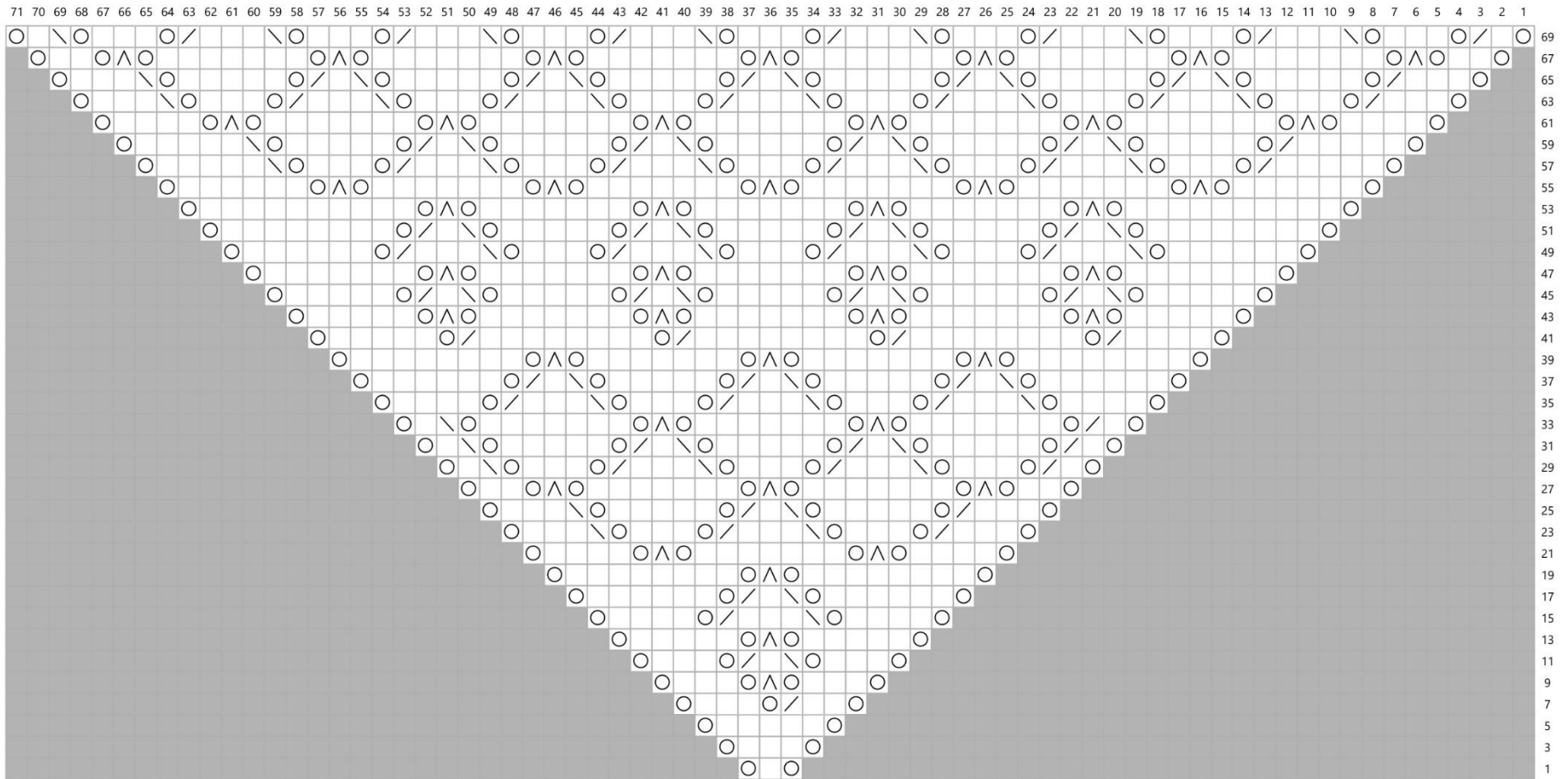


Chart 2

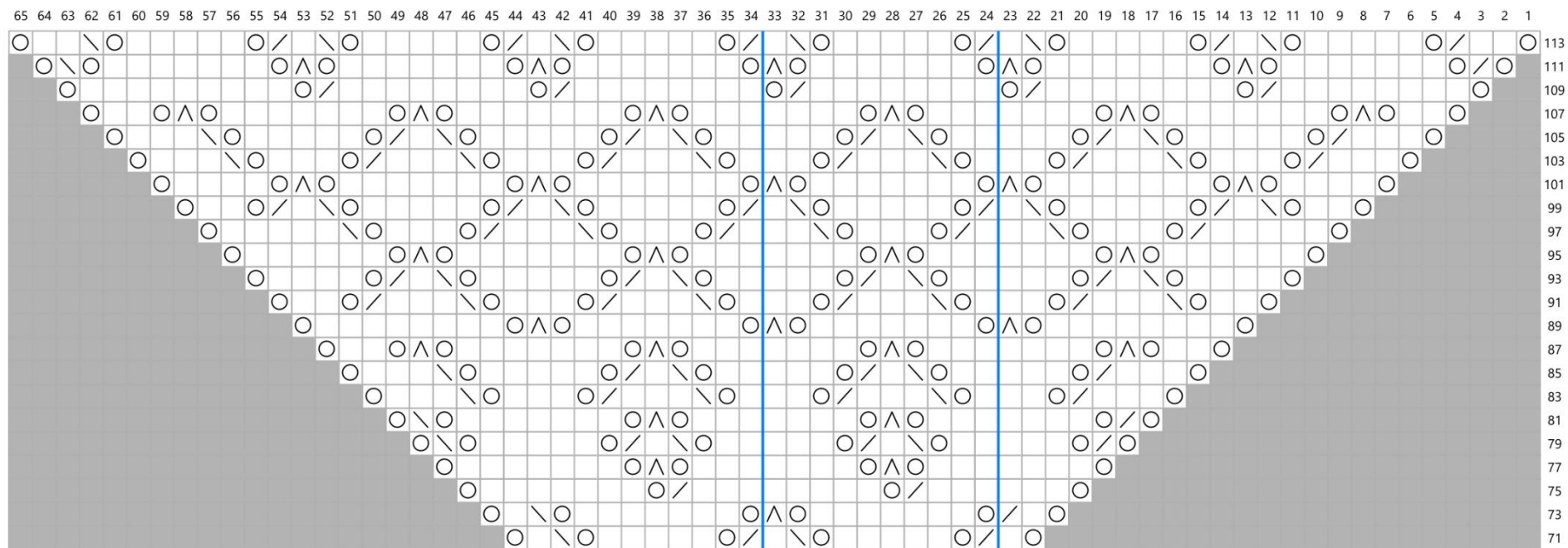


Chart 3

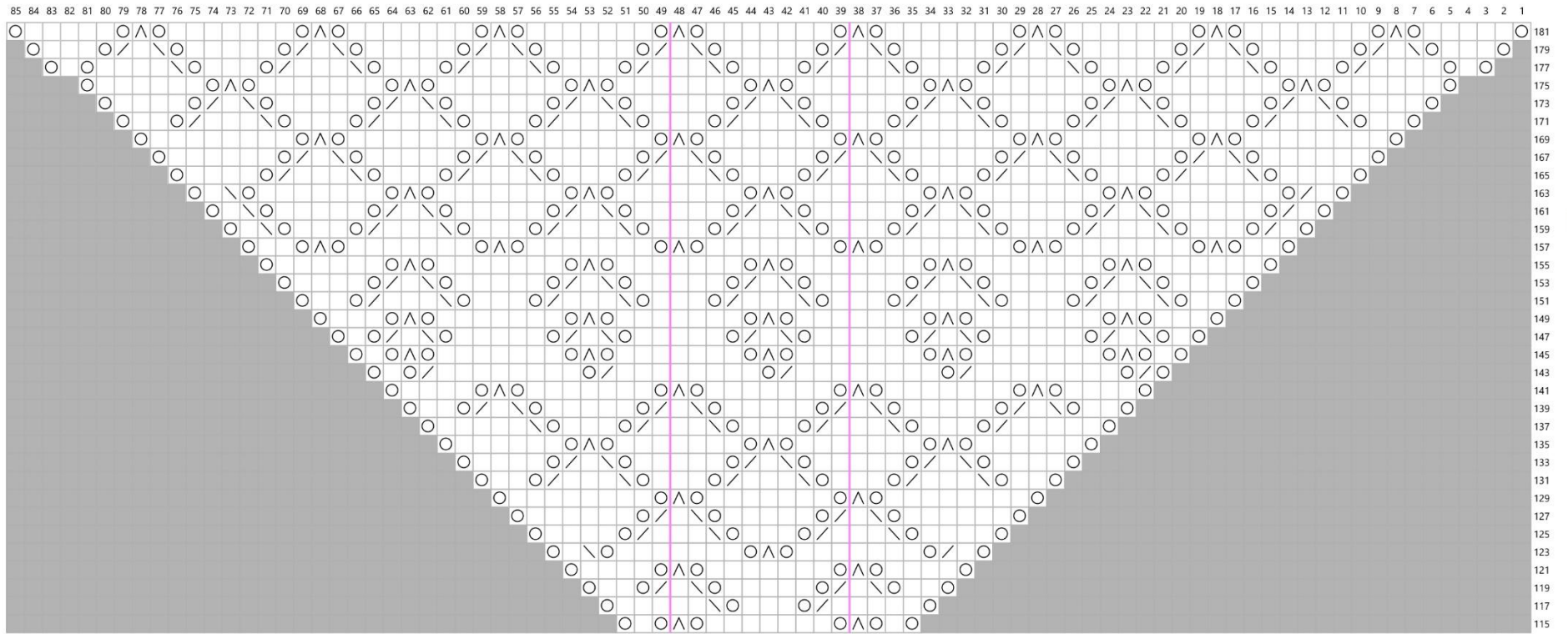




Chart 4:

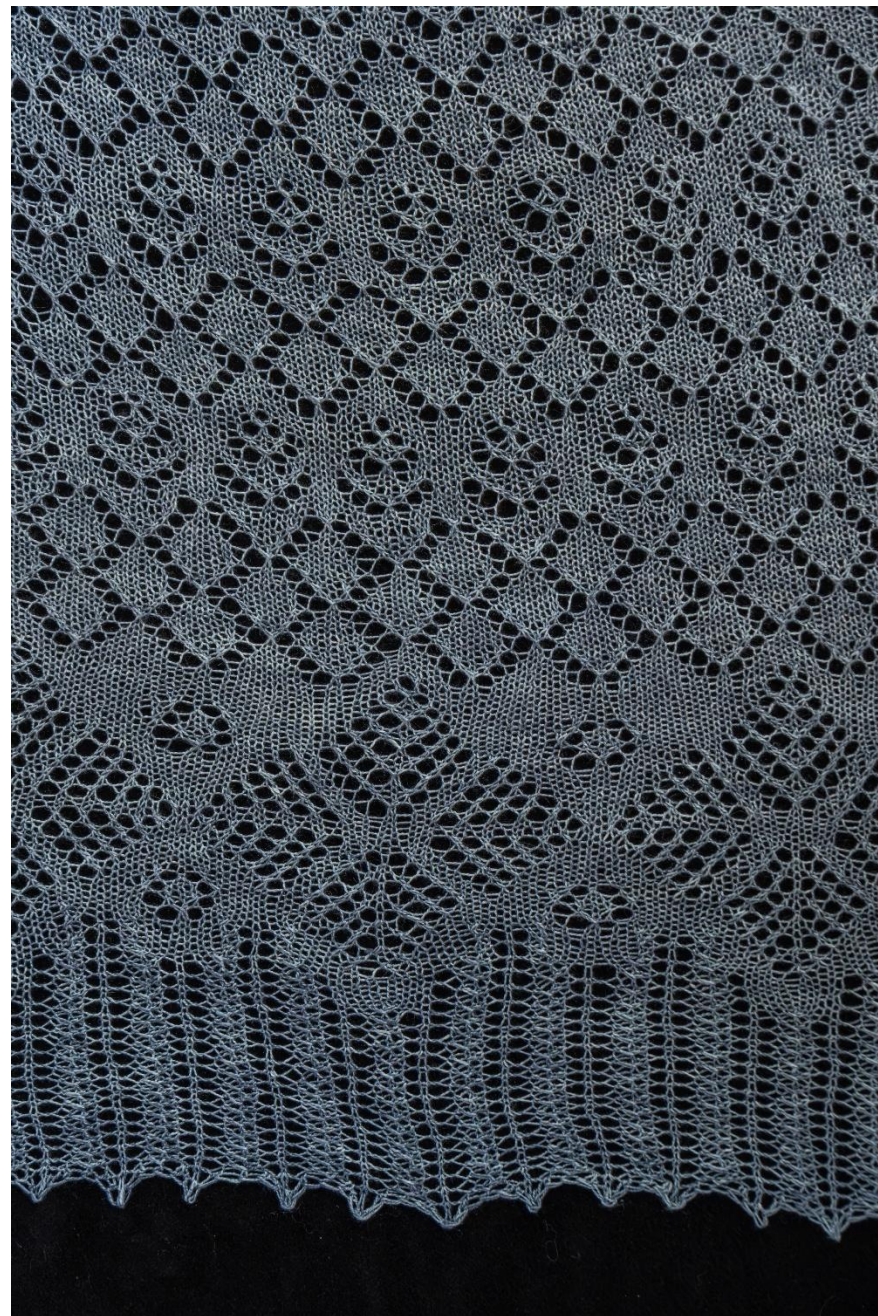
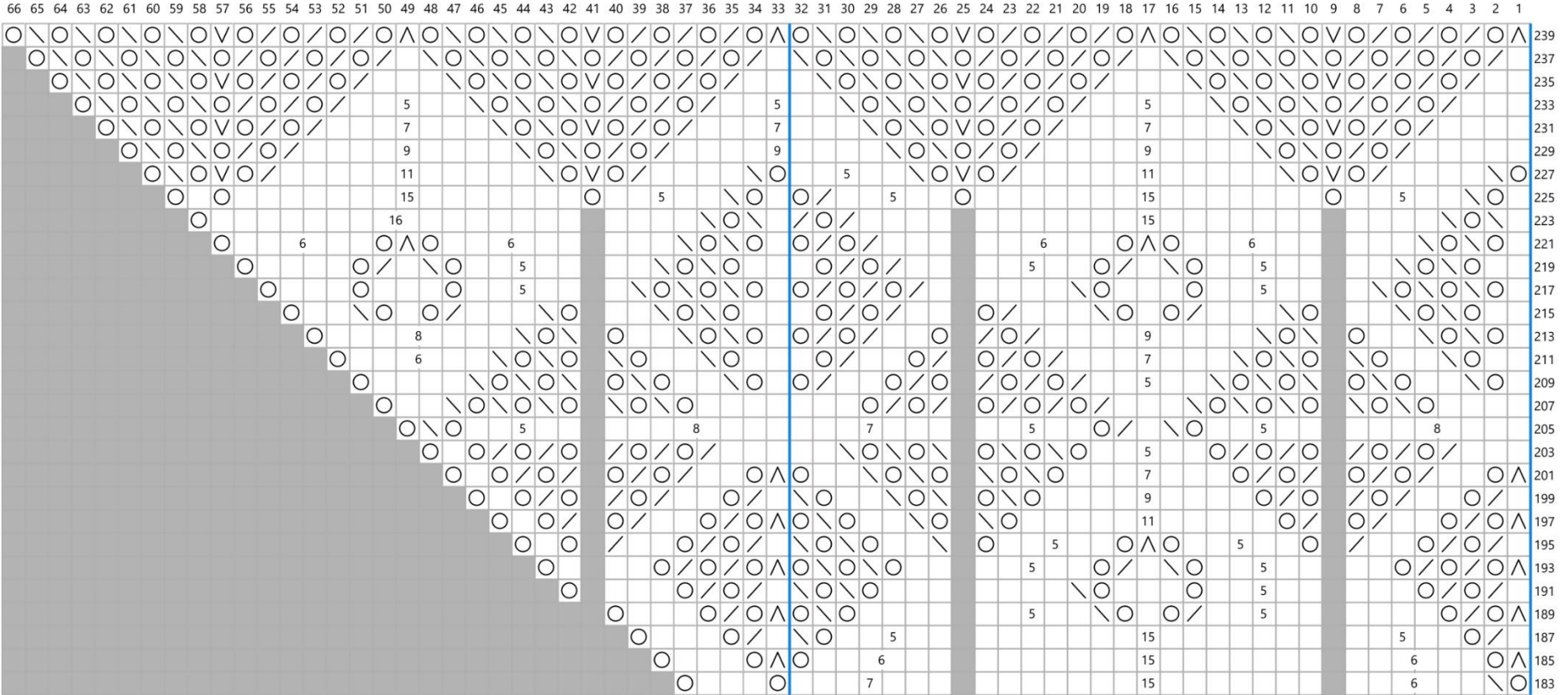
[illegible]




Chart 4b





## Key

	RS: knit WS: purl
	grey no stitch
	yo
	RS: knit into fb old WS: purl into fb old
	RS: ssk WS: ssp
	RS: k2tog WS: p2tog
	RS: sl1, k2tog, pssso WS: sl1 wyif, p2tog tbl, pssso
	work 11 times
	work 6 times

Note: The symbol V is used to indicate a kfb (knit in front and back), not a slip stitch. It adds an extra stitch that in this pattern is removed in the next pattern row by an extra decrease. Don't worry if your stitch count does not match the number of stitches shown in the chart for rows with the kfb stitch.

