

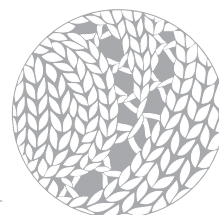
# TOMBRECK



This chevron patterned beanie is stylish, unisex and the ideal one-skein gift project. Perfect for new knitters this easy hat pattern uses only knits and purls to create the fun textured chevrons. You'll also practise knitting in the round and decreasing with k2tog to shape the crown of the hat. The hat begins with casting on for the ribbed brim and you'll then work from the bottom up to the slouchy, gathered crown that's just right for topping with a pom pom.

© Ysolda Ltd 2020. In purchasing this pattern you agree to print and use this pattern only for your personal non-commercial use. You may not distribute or sell electronic or paper copies of this pattern.

Please contact [support@ysolda.com](mailto:support@ysolda.com) if you have any questions about the pattern.





## YARN

273 yds / 250m of worsted weight yarn with good elasticity, wool or wool blends are ideal.

We used soft, bouncy De Rerum Natura Gilliatt (100% Merino, 273 yds / 250m, 100g) in Ciel (S), Granit (M) and Potimarron (L)

## GAUGE

18 sts and 24 rnds = 4" / 10 cm in st st using larger needle

## NEEDLES

US 6 / 4mm 16" / 40cm circular  
US 7 / 4.5mm 16" / 40cm circular  
US 7 / 4.5mm needles for preferred method of working small circumferences in the round.

## NOTIONS

10 stitch markers

## SIZE

**Small [Medium, Large]**

Finished circumference: 20[22 ¼, 24 ½]" / 50[55.5, 61]cm

Finished length: 9 ¼[9 ½, 9 ¾]" / 23[24, 24.5]cm

## ABBREVIATIONS

dec('d) decrease(d)

dpn(s) double pointed needle(s)

EOR end of rnd

k knit

k2tog knit 2 together (a R leaning dec)

p purl

pm place marker

rem remain(ing)

rep repeat(ing)

rnd(s) round(s)

slm slip marker

st st stockinette / stocking stitch

st(s) stitch(es)

## DIRECTIONS

With smaller needle cast on 90[100, 110] sts. Sample shown with Alternating cable cast-on.

Join rnd being careful not to twist and pm to mark EOR.

Rnd 1: (k1, p1) to end.

Rep rnd 1 until ribbing measures 1" / 2.5cm.

*Switch to larger needle.*

Work 18[20, 22] rnds of chevron pattern a twice, following chart or written directions.

Next rnd: \*k10, pm, rep from \* to EOR.

## Crown decreases

*Switch to needles for working smaller circumferences when necessary.*

Next rnd — dec rnd: \*k to 2 sts before m, k2tog, slm, rep from \* to EOR. 10 sts dec'd.

Knit 1 rnd slipping all markers as you come to them.

Rep last 2 rnds 2[3, 4] more times. 6 sts between each marker.

Rep dec rnd on every following rnd until only 10 sts rem.

Break yarn and draw through remaining sts (but not markers!) pulling up tightly to close hole.

## FINISHING

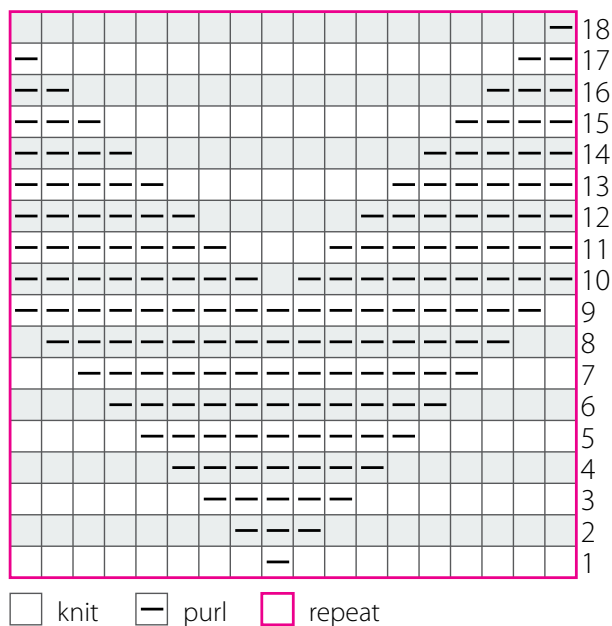
Weave in ends and block / tuck ends in and take photos.



### CHEVRON PATTERN (SMALL)

Rnd 1: k9, p1, k8.  
 Rnd 2: k8, p3, k7.  
 Rnd 3: k7, p5, k6.  
 Rnd 4: k6, p7, k5.  
 Rnd 5: k5, p9, k4.  
 Rnd 6: k4, p11, k3.  
 Rnd 7: k3, p13, k2.  
 Rnd 8: k2, p15, k1.  
 Rnd 9: k1, p17.  
 Rnd 10: p9, k1, p8.  
 Rnd 11: p8, k3, p7.  
 Rnd 12: p7, k5, p6.  
 Rnd 13: p6, k7, p5.  
 Rnd 14: p5, k9, p4.  
 Rnd 15: p4, k11, p3.  
 Rnd 16: p3, k13, p2.  
 Rnd 17: p2, k15, p1.  
 Rnd 18: p1, k17.

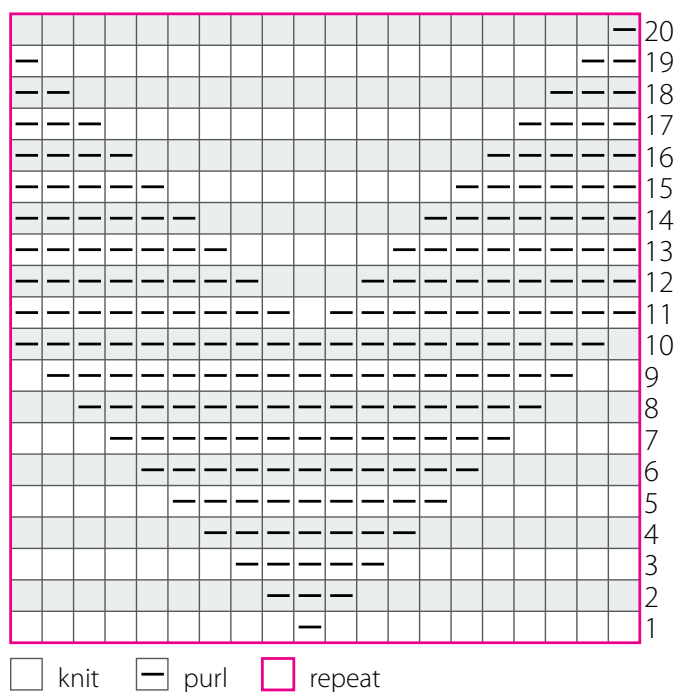
### CHEVRON CHART SMALL



### CHEVRON PATTERN (MED)

Rnd 1: k10, p1, k9.  
 Rnd 2: k9, p3, k8.  
 Rnd 3: k8, p5, k7.  
 Rnd 4: k7, p7, k6.  
 Rnd 5: k6, p9, k5.  
 Rnd 6: k5, p11, k4.  
 Rnd 7: k4, p13, k3.  
 Rnd 8: k3, p15, k2.  
 Rnd 9: k2, p17, k1.  
 Rnd 10: k1, p19.  
 Rnd 11: p10, k1, p9.  
 Rnd 12: p9, k3, p8.  
 Rnd 13: p8, k5, p7.  
 Rnd 14: p7, k7, p6.  
 Rnd 15: p6, k9, p5.  
 Rnd 16: p5, k11, p4.  
 Rnd 17: p4, k13, p3.  
 Rnd 18: p3, k15, p2.  
 Rnd 19: p2, k17, p1.  
 Rnd 20: p1, k19.

### CHEVRON CHART MEDIUM





CHEVRON PATTERN (LARGE)

Rnd 1:  $k_{11}, p_1, k_{10}$ .

Rnd 2: k10, p3, k9.

Rnd 3: k9, p5, k8.

Rnd 4: k8, p7, k7.

Rnd 5: k7, p9, k6.

Rnd 6: k6, p11, k5.

Rnd 7: k5, p13, k4.

Rnd 8: k4, p15, k3.

Rnd 9: k3, p17, k2.

Rnd 10: k2, p19, k1.

Rnd 11: k1, p21.

Rnd 12: p11, k1, p10.

Rnd 13: p10, k3, p9.

Rnd 14: p9, k5, p8.

Rnd 15: p8, k7, p7.

Rnd 16: p7, k9, p6.

Rnd 17: p6, k11, p5.

Rnd 18: p5, k13, p4.

Rnd 19: p4, k15, p3.

Rnd 20: p3, k17, p2.

Rnd 21: p2, k19, p1.

Rnd 22: p1, k21.

## CHEVRON LARGE

knit
  purl
  repeat

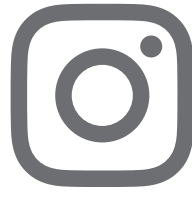
## CONNECT



ysolda



ravelry



instagram



newsletter



knitwork

We love seeing what you make. Tag your photos with @ysolda and use the hashtags #ysolda and #TombreckHat

---

## PATTERN HELP

This pattern has been thoroughly tech edited and tested and we hope you find it clear and easy to follow.

If errors are found we issue updates via email, so if it's been a while since you purchased this pattern please double check that you have the most up to date version by comparing the version number in the footer to that listed on the Tombreck Hat pattern page on our [website](#).

The [Knitwork](#) is our learning community of clubs, guided KALs and more for knitters and fans of Ysolda patterns.

Our Ravelry group is a great way to connect with other knitters who have made the pattern and you'll often get a very quick response. If you have a question, feedback or think you've found an error please email [support@ysolda.com](mailto:support@ysolda.com)

---

## YOU MIGHT ALSO LIKE



[DANIEL'S HAT](#)



[MUSSELBURGH](#)



[PORTY HAT](#)

[BROWSE ALL PATTERNS](#)