





HERRING COVE WRAP

Allison Griffith

The **Herring Cove Wrap** is a thickly cabled oversized shawl inspired by crisp fall air and chilly ferry rides. This wrap is both functional and fashionable: its large size will shut out autumn winds, but the striking cables elevate it from a simple oversized scarf to an elegant accessory suitable for a night out. Although the cables will require your attention, the wrap's construction is simple—a basic rectangle, knitted flat from one short end to the other, with optional fringe.

PATTERN PAGE 88

YARN Shibui Knits Drift



HERRING COVE WRAP

ALLISON GRIFFITH

Finished Size 27" wide and 77" long, not including fringe.

Yarn Shibui Knits Drift (85% extra fine Merino, 15% cashmere; 110 yd [101 m]/1¼ oz [50 g]): #2022 mineral, 22 skeins.

Needles Size 8 (5 mm): 32" circular (cir). Adjust needle size if necessary to obtain the correct gauge.

Notions Markers (m); cable needle (cn); tapestry needle; size H/8 (5 mm) crochet hook.

Gauge 14 sts of Cable B chart = 2½" wide; 49 sts of Cable C chart = 8½" wide; 28 rows = 4".

Difficulty Level ●●●●

Yarn Weight 4

For techniques you don't know, please visit our online knitting glossary at www.interweave.com/interweave-knitting-glossary.

NOTES

- This wrap is worked back and forth in rows. A circular needle is used to accommodate the large number of stitches.

WRAP

CO 135 sts. Do not join. Knit 3 rows. **Set-up row** (WS) K2, p1, M1P, p2, k2, place marker (pm), [k5, p1, M1P, p2, k5, pm, k2, p1, M1P, p2, k2, p4, k2, p1, M1P, p2, k2, p1, M1P, p1, M1P, k1, M1P, p1, M1P, p1, k2, p1, M1P, p2, k2, p4, k2, p1, M1P, p2, k2, pm] 2 times, k5, p1, M1P, p2, k5, pm, k2, p1, M1P, p2, k2—156 sts. **Next row** (RS) Work Chart A to m, sl m, work Chart B to m, sl m, work Chart C to m, sl m, work Chart D to m, sl m, work Chart E to m, sl m, work Chart B to m, sl m, work Chart A to end. Cont in patt as established until piece measures

about 76½" from CO, ending with Row 28 of Charts B, C, D, and E. Work Row 1 of charts once more. **Next row** (WS) K3, k2tog, k3, sl m, [k6, k2tog, k6, sl m, k3, k2tog, k10, k2tog, k3, k2tog, k2tog, k1, k2tog, k2tog, k3, k2tog, k10, k2tog, k3, sl m] 2 times, k6, k2tog, k6, sl m, k3, k2tog, k3—135 sts rem. Knit 1 RS row, removing m. BO all sts.

FINISHING

Weave in ends. Block to measurements.

Fringe: Cut 540 strands of yarn, each 12" long. Fold 2 strands in half. Using a crochet hook, pull fold through short edge of wrap, then pull ends of strands through fold to secure. Insert 2 strands of fringe in every CO and BO st.

ALLISON GRIFFITH is a lifelong knitter, a pattern designer, and the author of the blog *On the Needles*. When she's not knitting, she divides her time between teaching children's sewing classes, playing with her dog, and watching too many *Law & Order* reruns.

CHART A

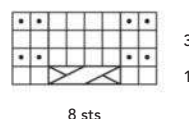


CHART B

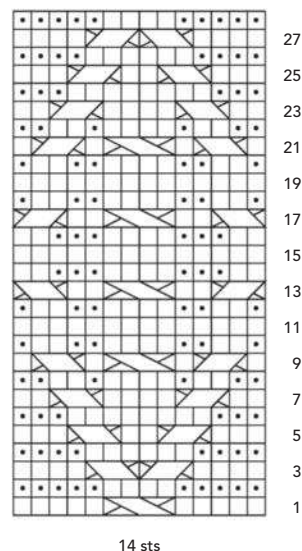
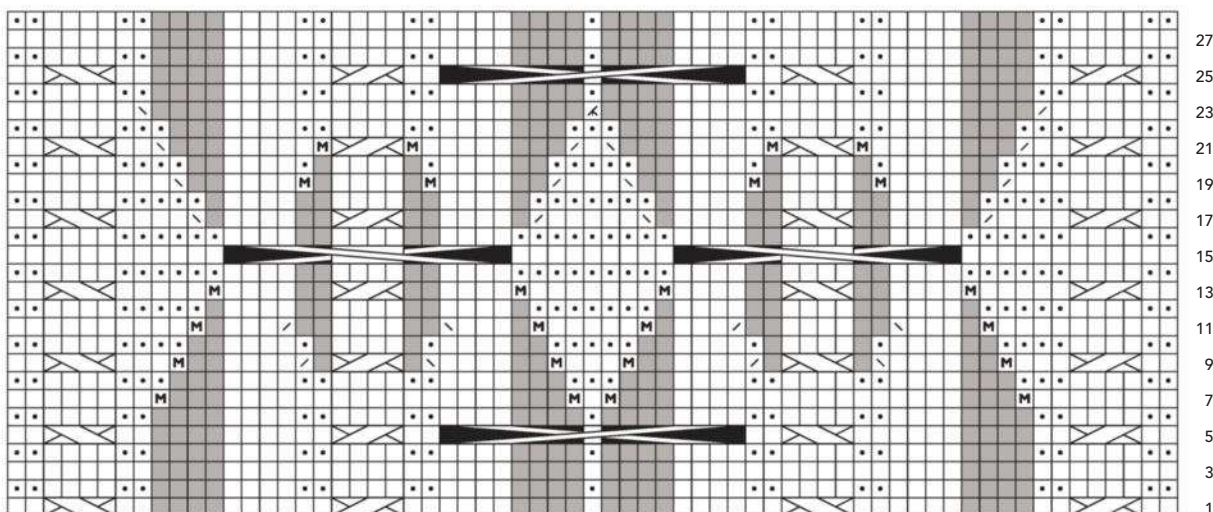
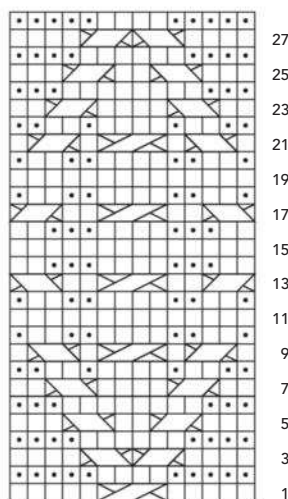


CHART C



49 sts to 57 sts to 49 sts

CHART D



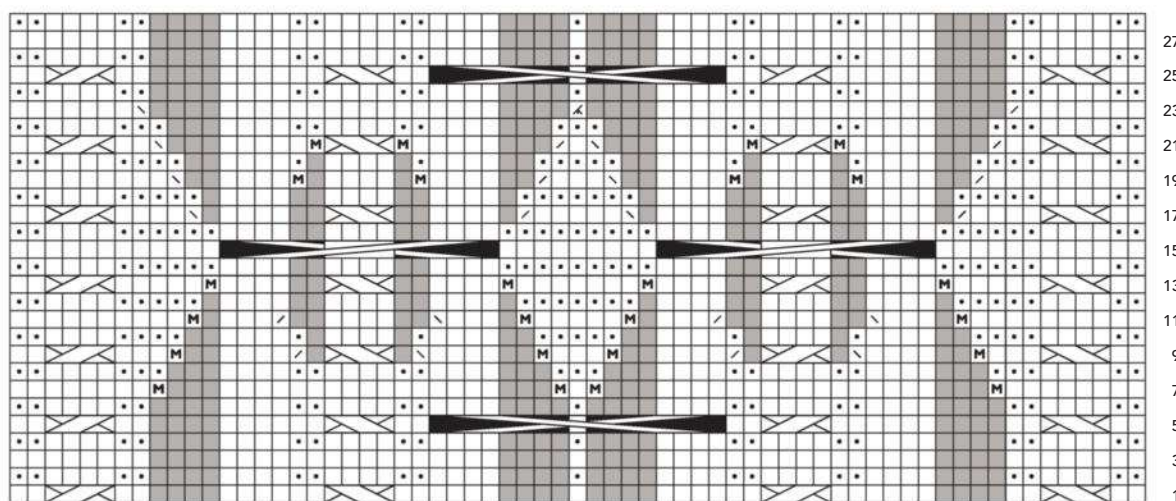
14 sts

- k on RS; p on WS
 p on RS; k on WS
 k2tog
 ssk
 k3tog
 M1

- sl 2 sts onto cn, hold in back, k2, k2 from cn
 sl 2 sts onto cn, hold in front, k2, k2 from cn
 sl 1 st onto cn, hold in back, k2, k1 from cn
 sl 2 sts onto cn, hold in front, k1, k2 from cn

- sl 5 sts onto cn, hold in front, k4, sl last st from cn to left needle, k1, k4 from cn
 sl 5 sts onto cn, hold in back, k4, sl last st from cn to left needle, k1, k4 from cn
 sl 8 sts onto cn, hold in front, k4, sl last 4 sts from cn to left needle, k4, k4 from cn
 sl 8 sts onto cn, hold in back, k4, sl last 4 sts from cn to left needle, k4, k4 from cn
 no stitch

CHART E



49 sts to 57 sts to 49 sts



YARMOUTH PULLOVER

MARY ANNE BENEDETTO

Finished Size 37½ (42, 46½, 49½, 53)" bust circumference. Pullover shown measures 37½"; modeled with 5" of positive ease.

Yarn Stacy Charles Fine Yarns BioMerino (100% superfine organic Merino wool; 120 yd [110 m]/1¼ oz [50 g]): #5355 flax, 12 (14, 16, 17, 18) balls. Yarn distributed by Tahki Stacy Charles, Inc.

Needles Size 6 (4 mm): 16" and 32" circular (cir). Size 7 (4.5 mm): 32" cir. Adjust needle size if necessary to obtain the correct gauge.

Notions Markers (m); cable needle (cn); size G/6 (4 mm) crochet hook; waste yarn for provisional CO; stitch holder; tapestry needle.

Gauge 27 sts and 29 rows = 4" in k1tbl, p1 rib on larger needle; 42 sts of Cable C chart = 6" wide on larger needle.

Difficulty Level ●●●●●

Yarn Weight 4

For techniques you don't know, please visit our online knitting glossary at www.interweave.com/interweave-knitting-glossary.

NOTES

- This pullover is worked back and forth in separate pieces and seamed.

- For Charts F and G, work Rows 1–26 once, then repeat Rows 27–30 as needed to the top of the raglans.