



quince&co.



euclid

designed by isabell kraemer

Euclid Shawl

Isabell Kraemer

Softness with structure. That's what Phoebe brings to this geometric shawl. Euclid's eccentric triangular shape—formed by increasing from one tip to the opposite full edge, plays beautifully with the balanced symmetry of the lattice. Think of warm hugs as you wrap up in this cozy shawl.

Finished measurements

71" [180 cm] wingspan and 40" [100 cm] wide

Yarn

Phoebe by Quince & Co

(100% extra fine American Merino; 301 yd [275 m]/100 g)

- 4 skeins Jupiter 805

Needles

- One 40" circular needle in size US 7 [4.5 mm]

Or size to obtain gauge

Notions

- Cable needle (optional)
- Tapestry needle
- Blocking pins and/or wires (optional)

Gauge

24 sts and 26 rows = 4" [10 cm] in lattice lace pattern, after wet blocking.

Special abbreviations

sl 1: Slip 1 stitch purlwise with yarn in front of work.

k1-f/b (knit 1, front and back): Knit into the front loop, then the back loop of next stitch (1 stitch increased).

p1-f/b (purl 1, front and back): Purl into the front loop, then the back loop of next stitch (1 stitch increased).

ssk (slip, slip, knit): Slip 2 stitches one at a time knitwise to the RH needle; return stitches to LH needle in turned position and knit them together through the back loops (1 stitch decreased, leans to the left).

k2tog: Knit 2 stitches together (1 stitch decreased, leans to the right).

LC (left cross): Slip 1 stitch onto cable needle (cn) and hold in front, k1, then k1 from cn.

RC (right cross): Slip 1 stitch onto cn and hold in back, k1, then k1 from cn.

LT (left twist): Skip 1 stitch and knit the next stitch through the back loop (tbl) keeping both stitches on needle, knit the skipped stitch, then slip both stitches from needle together.

RT (right twist): Skip 1 stitch and knit the next stitch, knit the skipped stitch, then slip both stitches from needle.

yo2: Bring yarn over needle twice. On the next row, knit the first yarn over, then knit the second yarn over through the back loop (2 stitches increased).

yo (yarn over): (1 st increased)

Between 2 knit stitches: Bring yarn between needles to the front, then over RH needle ready to knit the next stitch.

Between a knit and a purl stitch: Bring yarn between needles to the front, over RH needle, then between needles to front again, ready to purl the next stitch.

Between a purl and a knit stitch: Bring yarn over the RH needle, ready to knit the next stitch.

k2tog-tbl: Knit 2 stitches together through the back loops (1 stitch decreased).

k1-tbl: Knit 1 stitch through the back loop to twist stitch.

Lace lattice pattern for swatching (multiple of 4 sts + 2)

See also chart, page 4.

Note: Pattern repeat shifts to accommodate cables.

Row 1: (RS) P1, *k2tog, yo2, ssk; rep from * to last st, p1.

Row 2: P2, *(k1, k1-tbl) in yo2, p2; rep from * to end.

Row 3: *RC, p2; rep from * to last 2 sts, RC.

Row 4: P2, *k2, p2; rep from * to end.

Row 5: P1, yo, ssk, *k2tog, yo2, ssk; rep from * to last 3 sts, k2tog, yo, p1.

Row 6: K2, p2, *(k1, k1-tbl) in yo2, p2; rep from * to last 2 sts, k2.

Row 7: P2, *LC, p2; rep from * to end.

Row 8: *K2, p2; rep from * to last 2 sts, k2.

Repeat Rows 1-8 for lace lattice pattern for swatching.

Helpful links

For help with the following techniques, visit our blog:

long-tail cast on

cables with and without a cable needle

Notes

1. Shawl is knitted from right tip to wide left edge.
2. To work your cables without a cable needle, use LT and RT (left and right twists) in place of LC and RC.
3. Wet blocking is recommended for this piece.

Shawl

Using the long-tail cast on, CO 5 sts.

First row: (VWS) P2, k1, sl 1, k1.

Begin shawl set up

See also set up chart, page 4.

Increases occur every RS row throughout shawl.

Row 1: (RS) Sl 1, k1, p1, k1-f/b, k1 (1 st inc'd)—6 sts.

Row 2: (P1, k1) two times, sl 1, k1.

Row 3: Sl 1, k1, p1, k1, p1-f/b, k1—7 sts.

Row 4: P1, k2, p1, k1, sl 1, k1.

Row 5: Sl 1, (k1, p1) two times, p1-f/b, k1—8 sts.

Row 6: P2, k2, p1, k1, sl 1, k1.

Row 7: Sl 1, k1, p1, k1, p2, k1-f/b, k1—9 sts.

Row 8: P3, k2, p1, k1, sl 1, k1.

Row 9: Sl 1, k1, p1, yo, ssk, k2tog, yo, k1-f/b, k1—10 sts.

Row 10: (P2, k2) two times, sl 1, k1.

Row 11: Sl 1, k1, p2, LC, p2, k1-f/b, k1—11 sts.

Row 12: P3, k2, p2, k2, sl 1, k1.

Row 13: Sl 1, k1, p1, k2tog, yo2, ssk, k2tog, yo, k1-f/b, k1—12 sts.

Row 14: P2, k2, p2, (k1, k1-tbl) in yo2, p2, sl 1, k1.

Row 15: Sl 1, k1, (RC, p2) two times, k1-f/b, k1—13 sts.

Row 16: P3, (k2, p2) two times, sl 1, k1.

Row 17: Sl 1, k1, p1, yo, ssk, k2tog, yo2, ssk, k2tog, yo, k1-f/b, k1—14 sts.

Row 18: P2, k2, p2, (k1, k1-tbl) in yo2, p2, k2, sl 1, k1.

Row 19: Sl 1, k1, p2, (LC, p2) two times, k1-f/b, k1—15 sts.

Row 20: P3, (k2, p2) two times, k2, sl 1, k1.

Begin shawl body

See also main chart, page 4.

Row 1: (RS) Sl 1, k1, p1, *k2tog, yo2, ssk; rep from * to last 4 sts, k2tog, yo, k1-f/b, k1 (1 st inc'd)—16 sts.

Row 2: P2, k2, p2, *(k1, k1-tbl) in yo2, p2; rep from * to last 2 sts, sl 1, k1.

Row 3: Sl 1, k1, *RC, p2; rep from * to last 2 sts, k1-f/b, k1—17 sts.

Row 4: P3, *k2, p2; rep from * to last 2 sts, sl 1, k1.

Row 5: Sl 1, k1, p1, yo, ssk, *k2tog, yo2, ssk; rep from * to last 4 sts, k2tog, yo, k1-f/b, k1—18 sts.

Row 6: P2, k2, p2, *(k1, k1-tbl) in yo2, p2; rep from * to last 4 sts, k2, sl 1, k1.

Row 7: Sl 1, k1, p2, *LC, p2; rep from * to last 2 sts, k1-f/b, k1—19 sts.

Row 8: P3, *k2, p2; rep from * to last 4 sts, k2, sl 1, k1.

Rep the last 8 rows 38 more times—171 sts.

Begin border

See also border chart, page 5.

Row 1: (RS) Sl 1, k1, p2, *k2, p2; rep from * to last 3 sts, k1, k1-f/b, k1 (1 st inc'd)—172 sts.

Row 2: P1, k1, p2, *k2, p2; rep from * to last 4 sts, k2, sl 1, k1.

Row 3: Sl 1, k1, p2, *k2, p2; rep from * to last 4 sts, k2, p1-f/b, k1—173 sts.

Row 4: P1, *k2, p2; rep from * to last 4 sts, k2, sl 1, k1.

Row 5: Sl 1, k1, p2, *k2, p2; rep from * to last 5 sts, k2, p1, k1-f/b, k1—174 sts.

Row 6: P2, *k2, p2; rep from * to last 4 sts, k2, sl 1, k1.

Row 7: Sl 1, k1, p2, *k2, p2; rep from * to last 2 sts, k1-f/b, k1—175 sts.

Row 8: P3, *k2, p2; rep from * to last 4 sts, k2, sl 1, k1.

Rows 9-14: Rep Rows 1-6—178 sts.

Row 15: (RS) Sl 1, k1, p2, *LC, p2; rep from * to last 2 sts, k1-f/b, k1—179 sts.

Row 16: P3, *k2, p2; rep from * to last 4 sts, k2, sl 1, k1.

Row 17: Sl 1, k1, p1, *k2tog, yo2, ssk; rep from * to last 4 sts, k2tog, yo, k1-f/b, k1—180 sts.

Row 18: P2, k2, p2, *(k1, k1-tbl) in yo2, p2; rep from * to last 2 sts, sl 1, k1.

Row 19: Sl 1, k1, *RC, p2; rep from * to last 2 sts, k1-f/b, k1—181 sts.

Row 20: P3, *k2, p2; rep from * to last 2 sts, sl 1, k1.

Row 21: Sl 1, k1, p1, yo, ssk, *k2tog, yo2, ssk; rep from * to last 4 sts, k2tog, yo, k1-f/b, k1—182 sts.

Row 22: P2, k2, p2, *(k1, k1-tbl) in yo2, p2; rep from * to last 4 sts, k2, sl 1, k1.

Rows 23 and 24: Rep Rows 15 and 16—183 sts.

Rows 25-56: Work Rows 1-8 four times—199 sts.

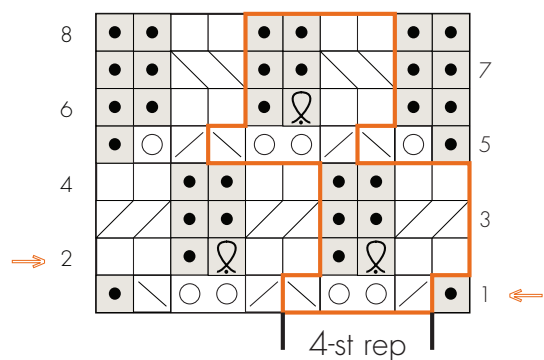
Begin i-cord edging

Next row: (RS) Bind off all sts as follows: Sl 1, k1, *return 2 sts to LH needle, k1, k2tog-tbl; rep from * until all sts from LH needle have been used, then BO rem sts on RH needle.

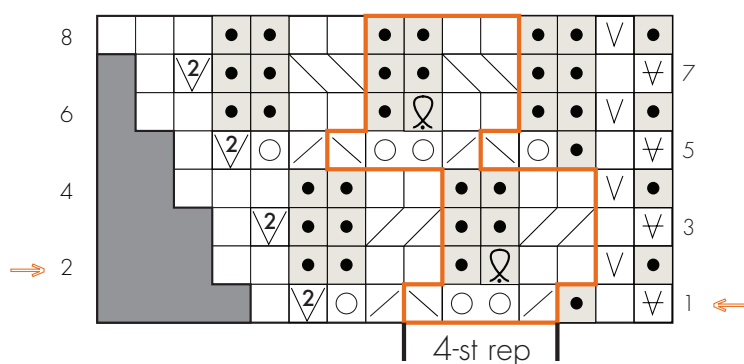
Finishing

Weave in ends. Wet block shawl to finished measurements, using blocking pins and/or wires, if you like.

Lace lattice for swatching



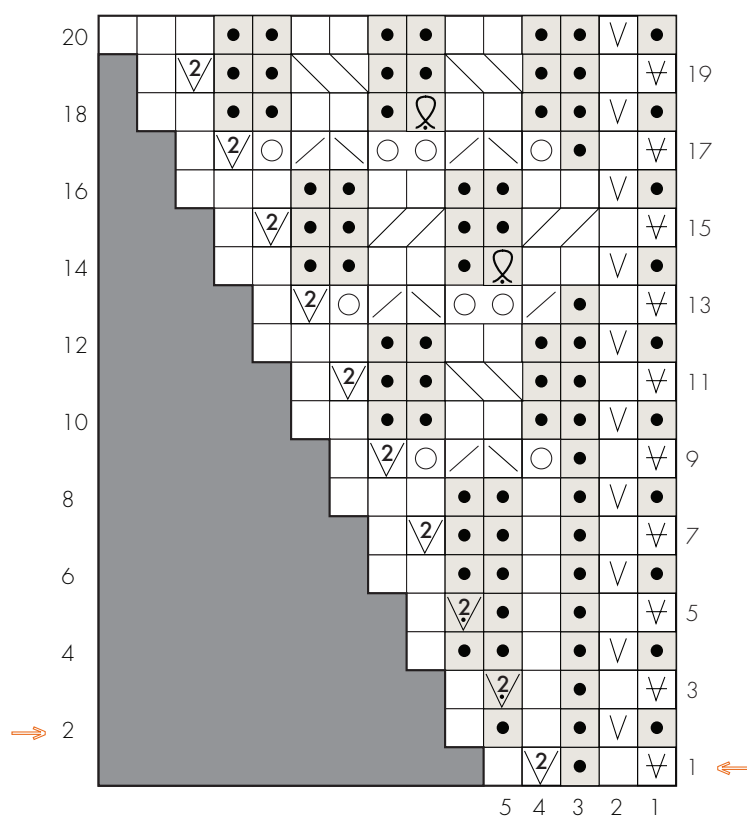
Main chart (work a total of 39 times—171 sts)



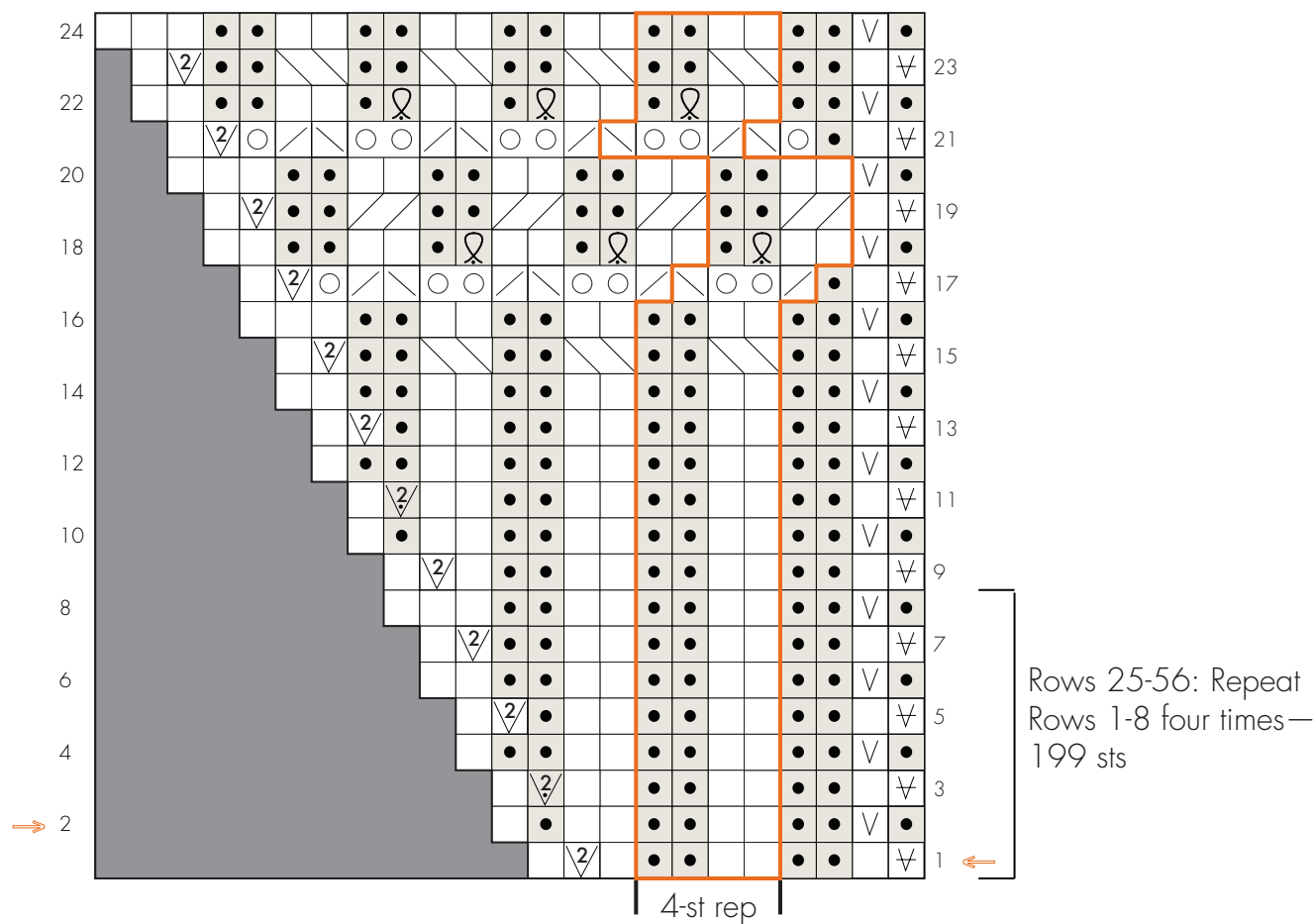
Key

- knit on RS, purl on WS
- purl on RS, knit on WS
- sl 1 purlwise with yarn in front on RS
- sl 1 purlwise with yarn in front on WS
- k1-f/b
- p1-f/b
- yo
- k2tog
- ssk
- LC or LT
- RC or RT
- yo2
- k1-tbl on WS
- no stitch
- pattern repeat

Set up chart (work one time)



Border chart (work one time)



Standard abbreviations

BO	bind off
CO	cast on
cm	centimeter(s)
cn	cable needle
g	gram(s)
inc('d)	increase(d)
k	knit
LH	left hand
mm	millimeter(s)
p	purl
rem	remain(ing); remain(s)
rep	repeat(ing); repeat(s)
RH	right hand
RS	right side
sl	slip
st(s)	stitch(es)
tbl	through the back loop
WS	wrong side
yd	yard(s)

