



YVONNE MT

by Natasja Hornby

THERE'S NO LIE IN HER FIRE

Each year I try to expand upon one of my favorite techniques, mosaic knitting, by designing what I call a 'Grand Mosaic' shawl. Yvonne MT, with its eye-catching diamonds and arrows, suits my grand criteria perfectly.

This shawl is especially close to my heart, not only because I used a novel technique, but also because it was a joint venture with my mom, Yvonne Maria Theresia.

The three colored version uses a technique I call 'Intarsia light', which is carefully explained in the pattern. If you prefer not to use the technique, the two colored shawl my mom created, proves that Yvonne MT doesn't necessarily need that third color to stand out from the crowd.



TECHNICAL INFORMATION



CONSTRUCTION

Yvonne MT is a sideways constructed triangle. You will start with a few stitches, and work increases to shape the shawl. The three color version is worked using a technique I call 'Intarsia light'. This means you will start a RS row with color 1 for the inner triangle of the shawl and change it to color 2 for the mosaic pattern. The consecutive WS row you will start with color 2 for the mosaic pattern and change it to color 1 for the inner triangle. The next two rows you will use color 3 only.

You can also choose to work the shawl in two colors, without introducing a third color for the inner triangle of the shawl. Please refer to the pictures for an example of the three- and the two-colored version.

Note: the mosaic colorwork is charted only.

SIZE

One size

Wingspan 190 cm / 74.75".

Length of left border 85 cm / 33.5".

YARN

Fingering weight yarn with some elasticity and bounce (wool or a wool blend).

Three colors

MC1 approx 575 m / 630 yards.

MC2 approx 350 m / 380 yards.

CC approx 275 m / 300 yards.

Two colors

MC1 approx 575 m / 630 yards.

MC2 approx 575 m / 630 yards.

Samples shown in

Three colors: Jamieson's of Shetland, Shetland Spindrift, 100% wool, 105 m / 115 yards per 25 gr.

Colorways: MC1; Spindrift 240 Yell Sound Bue, MC2; Spindrift 114 Mooskit / White, CC; Spindrift 226 Thyme.

Two colors: Biches & Bûches, Le Petit Lambswool, 100% wool, 248 m / 271 yards per 50 gr.

Colorways: MC1; Dark blue green, MC2; Green pink turquoise.

NEEDLES

Needle A (for the shawl body)

One 100 cm / 40" (or longer) circular needle in size needed to obtain gauge listed.

Suggested needle size: 3.5 mm / US #4.

Needle B (for the I-cord bind off)

One straight or circular needle.

Suggested needle size: 4 mm / US #6.

GAUGE

Measured after blocking.

Mosaic pattern on Needle A: 24 sts x 46 rows = 10 x 10 cm / 4 x 4".

NOTIONS

Stitch marker, waste yarn or stitch holders, tapestry needle, blocking tools.

STITCH PATTERNS

Mosaic pattern

On page 9 you will find an explanation on knitting mosaic and reading the charts.

To swatch the Mosaic pattern, go to the Border Chart B on page 11. With MC, CO a multiple of 8 sts. Work the repeat of the Chart to the end of the rows.



For pattern support and possible errata, please go to the [Yvonne MT thread in my group on Ravelry](#)

DIRECTIONS

SET UP

With Needle A and MC2, CO 6 sts.

Next row (WS): sl1 wyib, p1, k to end.

Row 1 (RS): k to last 4 sts, kfb, k1, sl1, p1; 7 sts.

Row 2 (WS): sl1 wyib, p1, k to end.

Row 3: with MC1, k to last 4 sts, kfb, k1, sl1, p1; 8 sts.

Row 4: sl1 wyib, p1, k to end.

Row 5 – 8: work as Row 1– 4; 10 sts.

Row 9 (RS): with MC2, k2, kfb, k to last 4 sts, kfb, k1, sl1, p1; 12 sts.

Row 10 (WS): sl wyib, p1, k to end.

Row 11: with MC1, k to last 4 sts, kfb, k1, sl1, p1; 13 sts.

Row 12: sl1 wyib, p1, k to end.

Row 13 – 16: work as Row 9 – 12; 16 sts.

MOSAIC CHART 1a & 1b

Next, you are going to work the **Mosaic Chart 1a**. Work as follows.

RS rows: work the Chart, sl1, p1.

WS rows: sl1 wyib, p1, work the Chart.

Next, work **Mosaic Chart 1b**. Work as **Mosaic Chart 1a**.

After working the Charts you have 66 sts.

TWO OR THREE COLORS

Introducing a third color

In the next row, you are going to introduce the third color for the inner triangle of the shawl. The third color (CC) will be worked until the mosaic pattern, where it will be changed to MC2. You will work the mosaic as you have done before; slipping the MC1 sts and knitting the MC2 sts. To get a neat

finish on the WS of your shawl and avoid gaps, you will need to twist your strands at the color change, by picking up the new color from underneath the color you have been working with.

Continue with two colors

If you choose to work your entire shawl in two colors, follow the instructions below, but ignore the instruction to change color, and read MC2 for CC.

MOSAIC CHART 2

Note: when you are instructed to work as a previous row, follow the instructions for the given row, while continuing to work the Mosaic Charts in the presented order.

If you are working the shawl in three colors; break MC2.

Row 1 (RS): with CC, k2, kfb, k3, change to MC2, work Mosaic Chart 2, sl1, p1; 67 sts.

Row 2 (WS): sl1 wyib, p1, work Mosaic Chart 2, change to CC, k to end.

Row 3: with MC1, k4, sl1, k1, sl1, work Mosaic Chart 2, sl1, p1.

Row 4: sl1 wyib, p1, work Mosaic Chart 2, sl1, k1, sl1, k to end.

Row 5: with CC, k2, kfb, k6, change to MC2, work Mosaic Chart 2, sl1, p1; 68 sts.

Row 6: sl1 wyib, p1, work Mosaic Chart 2, change to CC, k to end.

Row 7: with MC1, k3, (sl1, k1) twice, sl1, work Mosaic Chart 2, sl1, p1.

Row 8: sl1 wyib, p1, work Mosaic Chart 2, (sl1, k1) twice, sl1, k to end.



Row 9: with CC, k2, kfb, k5, change to MC2, work Mosaic Chart 2, sl1, p1; 69 sts.

Row 10: sl1 wyib, p1, work Mosaic Chart 2, change to CC, k to end.

Row 11 & 12: work as Row 3 & 4; 70 sts.

Row 13: with CC, k2, kfb, k4, change to MC2, work Mosaic Chart 2, sl1, p1; 72 sts.

Row 14: sl1 wyib, p1, work Mosaic Chart 2, change to CC, k to end.

Row 15: with MC1, k3, sl1, k1, sl1, work Mosaic Chart 2, sl1, p1; 73 sts.

Row 16: sl1 wyib, p1, work Mosaic Chart 2, sl1, k1, sl1, k to end.

Row 17: with CC, k2, kfb, k3, change to MC2, work Mosaic Chart 2, sl1, p1; 75 sts.

Row 18: sl1 wyib, p1, work Mosaic Chart 2, change to CC, k to end.

Row 19: with MC1, k4, sl1, work Mosaic Chart 2, sl1, p1; 76 sts.

Row 20: sl1 wyib, p1, work Mosaic Chart 2, sl1, k to end.

Row 21: with CC, k2, kfb, k2, change to MC2, work Mosaic Chart 2, sl1, p1; 78 sts.

Row 22: sl1 wyib, p1, work Mosaic Chart 2, change to CC, k to end.

Row 23: with MC1, k3, sl1, work Mosaic Chart 2, sl1, p1.

Row 24: sl1 wyib, p1, work Mosaic Chart 2, sl1, k to end.

Row 25: with CC, k2, kfb, k1, change to MC2, work Mosaic Chart 2, sl1, p1; 79 sts.

Row 26: sl1 wyib, p1, work Mosaic Chart 2, change to CC, k to end.

Row 27: with MC1, k4, sl1, work Mosaic Chart 2, sl1, p1.

Row 28: sl1 wyib, p1, work Mosaic Chart 2, sl1, k to end.

Row 29: with CC, k2, kfb, k2, change to MC2, work Mosaic Chart 2, sl1, p1; 80 sts.

Row 30: sl1 wyib, p1, work Mosaic Chart 2, change to CC, k to end.

Row 31 - 34: work as Row 15 - 18; 81 sts.

***Note:** in the next row you are going to place a marker. The marker will be slipped when not mentioned.*

Row 35: with MC1, k4, sl1, k1, sl1, pm, work Mosaic Chart 2, sl1, p1.

Row 36: sl1 wyib, p1, work Mosaic Chart 2, slm, sl1, k1, sl1, k to end.

Row 37: with CC, k2, kfb, k to m, slm, k2, change to MC2, work Mosaic Chart 2, sl1, p1.

Row 38: sl1 wyib, p1, work Mosaic Chart 2, change to CC, k to end.

Row 39: with MC1, k3, (sl1, k1) to 1 st bef m, sl1, slm, k1, sl1, work Mosaic Chart 2, sl1, p1; 80 sts.

Row 40: sl1 wyib, p1, work Mosaic Chart 2, (sl1, k1) to last 4 sts, sl1, k to end.

Row 41: with CC, k2, kfb, k to m, slm, k4, change to MC2, work Mosaic Chart 2, sl1, p1.

Row 42: sl1 wyib, p1, work Mosaic Chart 2, change to CC, k to end.

Row 43: with MC1, k4, (sl1, k1) to 1 st bef m, sl1, slm, (k1, sl1) twice, work Mosaic Chart 2, sl1, p1; 79 sts.

Row 44: sl1 wyib, p1, work Mosaic Chart 2, (sl1, k1) to last 5 sts, sl1, k to end.

Row 45: with CC, k2, kfb, k to m, slm, k6, change to MC2, work Mosaic Chart 2, sl1, p1.

Row 46: sl1 wyib, p1, work Mosaic Chart 2, change to CC, k to end.

Row 47: with MC1, k3, (sl1, k1) to 1 st bef m, sl1, slm, (k1, sl1) three times, work Mosaic Chart 2, sl1, p1; 78 sts.

Row 48: sl1 wyib, p1, work Mosaic Chart 2, (sl1, k1) to last 4 sts, sl1, k to end.



REPEAT

Next, you will continue by repeating Mosaic Chart 2 and working the inner triangle of the shawl in pattern as established. Work as follows.

Row 1 (RS): with CC, k2, kfb, k to m, slm, k8, change to MC2, work Mosaic Chart 2, sl1, p1.

Row 2 (WS): sl1 wyib, p1, work Mosaic Chart 2, change to CC, k to end.

Row 3: with MC1, k4, (sl1, k1) to 1 st bef m, sl1, slm, (k1, sl1) four times, work Mosaic Chart 2, sl1, p1.

Row 4: sl1 wyib, p1, work Mosaic Chart 2, (sl1, k1) to last 5 sts, sl1, k to end.

Row 5: with CC, k2, kfb, k to m, slm, k10, change to MC2, work Mosaic Chart 2, sl1, p1.

Row 6: work as Row 2.

Row 7: with MC1, k3, (sl1, k1) to 1 st bef m, sl1, slm, (k1, sl1) four times, work Mosaic Chart 2, sl1, p1.

Row 8: sl1 wyib, p1, work Mosaic Chart 2, (sl1, k1) to last 4 sts, sl1, k to end.

Row 9 & 10: work as Row 1 & 2.

Row 11: with MC1, k4, (sl1, k1) to 1 st bef m, sl1, slm, (k1, sl1) three times, work Mosaic Chart 2, sl1, p1.

Row 12: work as Row 4.

Row 13: with CC, k2, kfb, k to m, slm, k6, change to MC2, work Mosaic Chart 2, sl1, p1.

Row 14: work as Row 2.

Row 15: with MC1, k3, (sl1, k1) to 1 st bef m, sl1, slm, (k1, sl1) twice, work Mosaic Chart 2, sl1, p1.

Row 16: work as Row 8.

Row 17: with CC, k2, kfb, k to m, slm, k4, change to MC2, work Mosaic Chart 2, sl1, p1.

Row 18: work as Row 2.

Row 19: with MC1, k4, (sl1, k1) to 1 st bef m, sl1, slm, k1, sl1, work Mosaic Chart 2, sl1, p1.

Row 20: work as Row 4.

Row 21: with CC, k2, kfb, k to m, slm, k2, change to MC2, work Mosaic Chart 2, sl1, p1.

Row 22: work as Row 2.

Row 23: with MC1, k3, (sl1, k1) to 1 st bef m, sl1, slm, work Mosaic Chart 2, sl1, p1.

Row 24: work as Row 8.

Row 25: with CC, k2, kfb, k to m, slm, change to MC2, work Mosaic Chart 2, sl1, p1.

Row 26: work as Row 2.

Row 27: with MC1, k4, (sl1, k1) to 1 st bef m, sl1, slm, work Mosaic Chart 2, sl1, p1.

Row 28: work as Row 4.

Row 29 & 30: work as Row 25 & 26.

Row 31 - 36: work as Row 23 - 28.

Row 37 & 38: work as Row 21 & 22.

Row 39: with MC1, k3, (sl1, k1) to 1 st bef m, sl1, slm, k1, sl1, work Mosaic Chart 2, sl1, p1.

Row 40: work as Row 8.

Row 41 & 42: work as Row 17 & 18.

Row 43: with MC1, k4, (sl1, k1) to 1 st bef m, sl1, slm, (k1, sl1) twice, work Mosaic Chart 2, sl1, p1.

Row 44: work as Row 4.

Row 45 & 46: work as Row 13 & 14.

Row 47: with MC1, k3, (sl1, k1) to 1 st bef m, sl1, slm, (k1, sl1) three times, work Mosaic Chart 2, sl1, p1.

Row 48: work as Row 8; 90 sts.

Work the Repeat 8 times more. With each repeat you will increase 12 sts; 186 sts after working the repeat 8 times more.

Work Row 1 - 6 once more; 188 sts.



If you are working on a shawl with three colors, break MC2 and CC.

LEFT SIDE BORDER

Next, you are going to work the Left Side Border using MC1 and MC2 only. Start with **Border Chart A** and work as follows.

BORDER CHART A

Row a (RS): with MC1, k to m, slm, work Row a of Border Chart A, sl1, p1.

Row b (WS): sl1 wyib, p1, work Row b of Border Chart A to m, slm, k to end.

Row c: with MC2, k2, kfb, k to m, slm, work Row c of Border Chart A, sl1, p1.

Row d: sl1 wyib, p1, work Row d of border Chart A to m, slm, k to end; 189 sts.

Row e & f: work as Row a & b, working Row e & f of Border Chart A; 190 sts.

BORDER CHART A & B

Next, you will work **Border Chart B** until the marker and continue with **Border Chart A**, starting with Row 1 of both Charts. Work as follows.

RS rows: work **Border Chart B** to m, slm, work **Border Chart A**, sl1, p1.

WS rows: sl1 wyib, p1, work **Border Chart A**, slm, work **Border Chart B**.

After working **Border Chart B** you have 199 sts.

FIRST TRIANGLE

Next, you are going to work the first triangle that protrudes from the edge. Work as follows.

With MC1, k to m, k7, work Row 1 of the **Triangle Chart 1**.

Place the remaining sts on your LH needle on waste yarn or a st holder and turn your work, ready to work a WS row.

Next row (WS): work Row 2 of the **Triangle Chart 1**, k to m, slm, k to end.

Next row (RS): with MC2, k2, kfb, k to m, slm, k7. Place the sts on your RH needle on waste yarn or spare needle and continue by working Row 3 of the Chart.

Next row (WS): work Row 4 of the Chart.

You have now separated the sts for the first triangle from the border sts and you can remove the marker.

Continue to work the first triangle by working the remainder of the **Triangle Chart 1**. Do not break MC1 at the beginning of the border row. Instead use another ball of yarn for the MC1 rows.

After working the Chart you have 9 sts. Place these sts on a st holder and break yarns.

SECOND TRIANGLE

Next, you are going to work the second triangle.

Place the sts for the second triangle on Needle A.

Work **Triangle Chart 2** as follows.

RS rows: work Chart, sl1, p1.

WS rows: sl1 wyib, p1, work Chart.

Place the remaining 9 sts on a st holder and break yarns.



EDGE

Place the sts of the straight edge on Needle A.

Next row (WS): with MC2, knit the sts you have placed on the needle.

Break MC2.

Next row (RS): with MC1, knit the sts until the slanted side of the first Triangle. With working yarn PU and k 10 sts until the live sts. Place the 9 live sts on your LH needle and knit those sts. PU and k 10 sts along the second slanted side of the first Triangle. PU and k 3 sts between the first and the second Triangle. PU and k 10 sts until the live sts of the second Triangle. Place the 9 live sts on your LH needle, k7 sl1, p1.

Next row (WS): sl1 wyib, p1, k to end.

Next, you are going to bind off all sts using an I-cord bind off. Work as follows.

Step 1: With Needle B, CO 2 sts using a cable CO.

Step 2: k1, ssk.

Step 3: slip the 2 sts on your RH needle to your LH needle.

Repeat Step 2 & 3 until there are 2 sts on your LH needle.

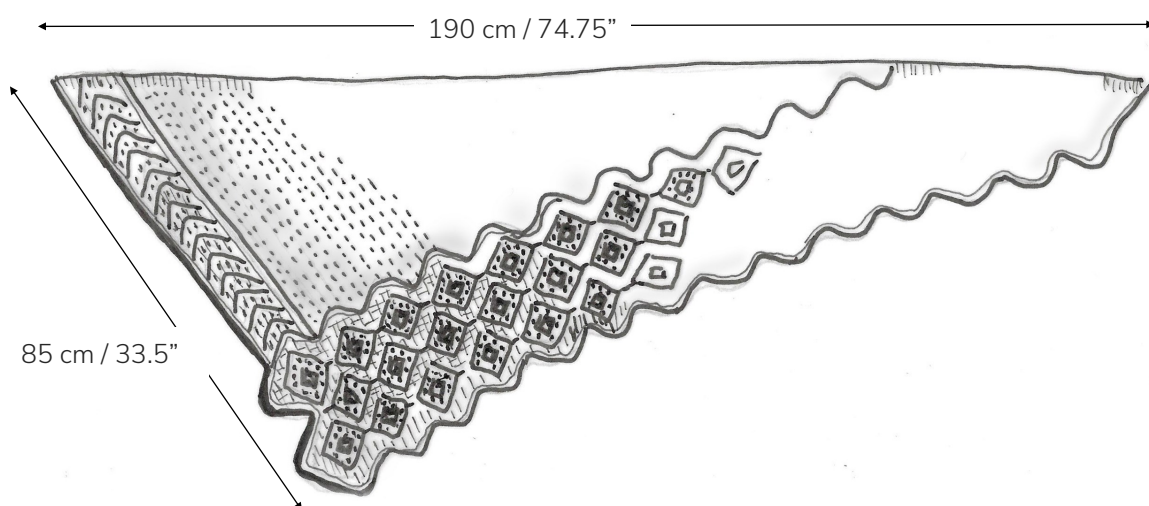
Graft the 2 sts on your RH needle together with the 2 sts on your LH needle using Kitchener Stitch.

FINISHING

Weave in all ends. Wet block your shawl, preferably using blocking wires. Stretch the shawl to shape and measurements given in SCHEMATIC.

I-CORD BIND OFF

SCHEMATIC



CHARTS

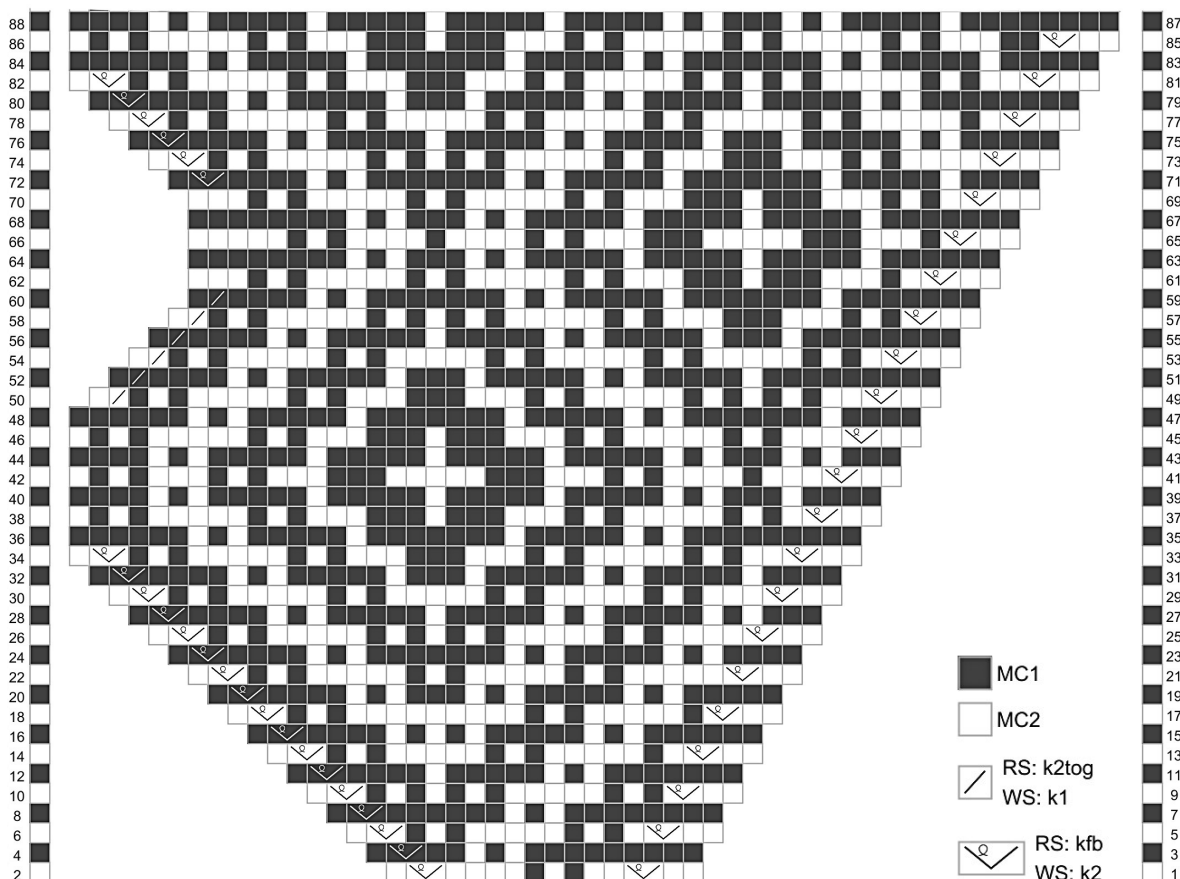
Working a Mosaic Colorwork Chart

A mosaic pattern is a slip-stitch design using two colors. The colors are worked one at a time, so you will be handling only one strand every row. You will be working a RS and a WS row with one color. After working these two rows, you will drop that color, and work a RS and a WS row with the second color. The chart represents this: every horizontal row of squares represents a RS (right to left) and a WS (left to right) row.

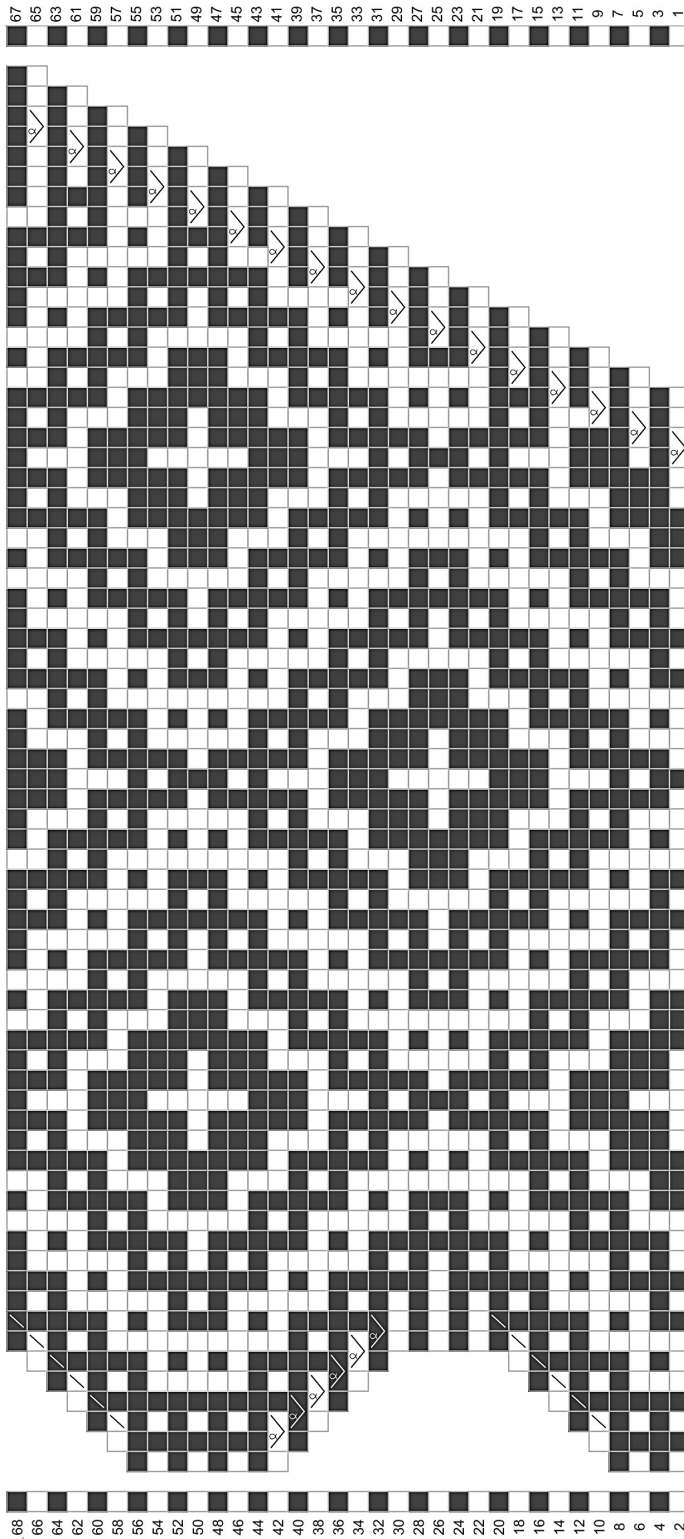
The squares that form the vertical bar on the left and right of the Chart represent the color you will be using for that row. If the square indicates to use MC1, you will be knitting the MC1 sts, and slipping the MC2 sts. On the next (WS) row you will be knitting and slipping the exact same sts. Note that the squares that form the vertical bars do not represent stitches, **and should not be worked at the beginning or end of the row.**

All sts are slipped purlwise, with the yarn held on the WS. So, on a RS row you will be slipping the sts with the yarn in back and on the WS rows with the yarn in front.

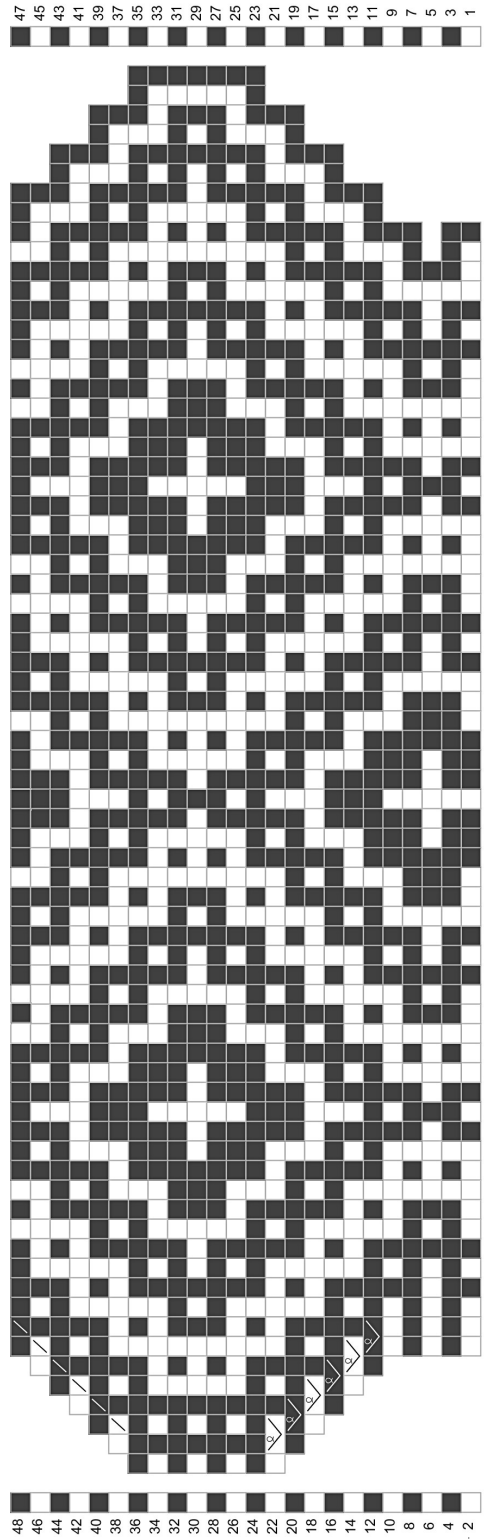
MOSAIC CHART 1a



MOSAIC CHART 1b

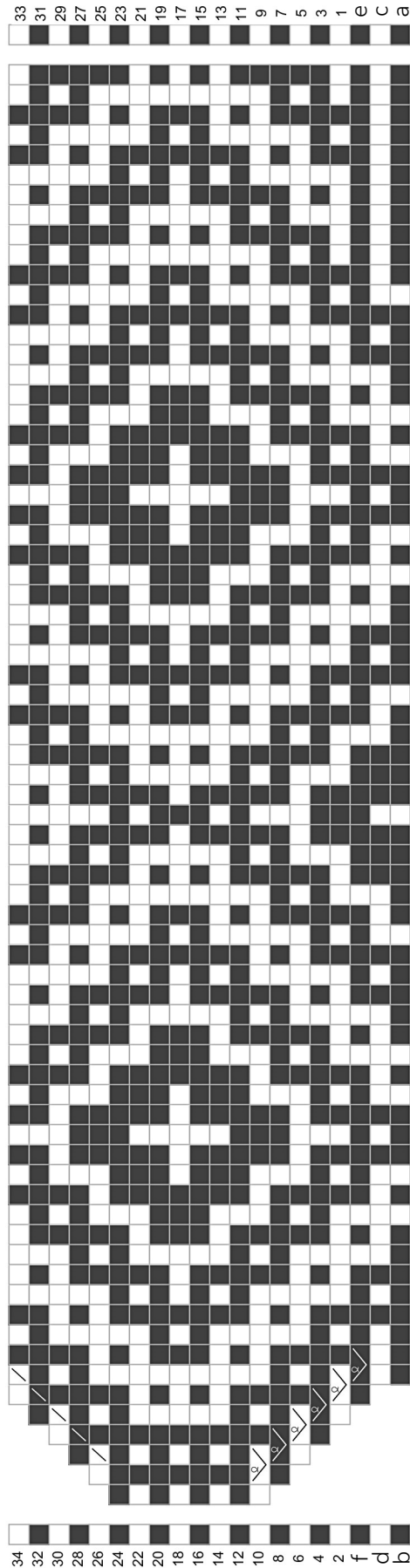


MOSAIC CHART 2

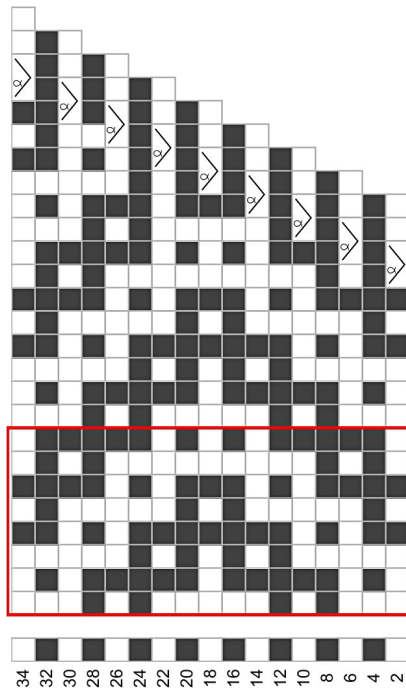


MC1
 MC2
 RS: k2tog
 WS: k1
 RS: kfb
 WS: k2

BORDER CHART A

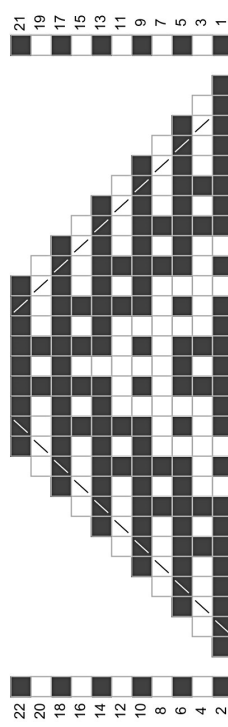


BORDER CHART B

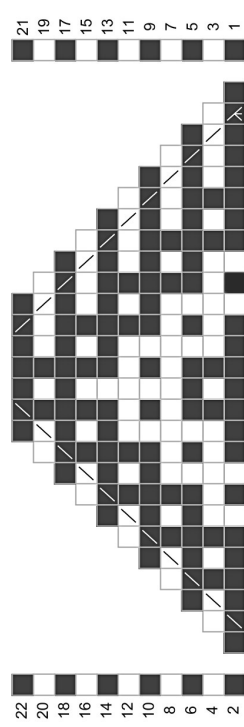


MC1 MC2 RS: kfb WS: k2 RS: k2tog WS: k1 RS: ssk WS: k1 RS: sssk WS: k1 Repeat

TRIANGLE CHART 1



TRIANGLE CHART 2



ABBREVIATIONS

(x, y) = the brackets represent a repeat. Directions within the brackets should be repeated as instructed.

approx = approximately

bef = before

BO = bind off

CC = contrast color

CO = cast on

inc('d) = increase(d)

k = knit

k2tog = knit 2 sts together / right leaning decrease.

kfb = knit into the front and the back of the stitch (1 st increased).

kwise = knitwise

LH = left hand

m = marker

MC = main color

p = purl

pm = place marker

pwise = purlwise

PU = pick up

rem = remove

RH = right hand

RS = right side

sl = slip (purlwise with yarn in back on RS and yarn in front on WS, unless otherwise stated).

slm = slip marker

ssk / ssp = slip, slip, knit / purl (left leaning decrease); slip 2 st as to k, one at a time, slip the sts back to the LH needle, knit / purl through back loop.

sssk / sssp = slip, slip, slip knit / purl (left leaning double decrease); slip 3 st as to k, one at a time, slip the sts back to the LH needle, knit / purl through back loop.

st(s) = stitch(es)

WS = wrong side

wyib = with yarn in back

Photography

Daan Schipper

Final editing

Karen Fought, Natalie Perreau and Irina Phillips

Title quote

Charles Bukowski

