

KNITWORTHY
seven



CROWN-SHY BEANIE

A classic cable knit beanie worked from the bottom up

YSOLDA

CROWN-SHY BEANIE

With a folded stockinette brim and engaging cable and dip-stitch pattern, Crown-Shy is the perfect beanie for your next adventure!

The Crown-Shy Beanie is a must-have for nature lovers who can't help but pause to look up all around them. Its intricate braided cables and dip-stitch leaves create a stunning three-dimensional texture, while the multi-layered brim ensures warmth and functionality.

The beanie uses heavy DK or worsted weight yarn. You'll work from the bottom up, beginning with a provisional cast-on. The folded brim is knit together, followed by a hidden section of ribbing that will keep the hat nice and snug. Shaping is worked into the stitch patterns, bringing them together to form a star at the top of the crown. The pattern includes sizes for the whole family, and the folded brim can easily be substituted for a simple rib to give a different style.

TABLE OF CONTENTS

Use this table of contents to find your way around the pattern, or print only the pages for the pattern version or additional guidance that you need.

THE PATTERN

Key information	page 3
Abbreviations	page 4
Double dip stitch	page 5
Directions	page 6
Chart	page 8

PATTERN SUPPORT

This pattern has been thoroughly tech edited and tested and we hope you find it clear and easy to follow. If you have a question, that isn't covered in the pattern, accompanying videos or our support page, or if you think you've found an error please email support@ysolda.com

SHARE YOUR PROJECT!

We love seeing your works in progress and finished projects. Use the hashtag **#CrownShyBeanie** and tag **@ysolda** so that we don't miss them!

THE PATTERN

YARN

Heavy DK or worsted weight yarn

Wool, acrylic or blends are ideal

YARN AMOUNT REQUIRED

145[185, 220, 270, 320, 380] yds/135[170, 200, 250, 290, 345]m.

SHOWN IN

Stranded Dyeworks Superwash BFL DK (100% wool, 120 yds / 109m, 50g) in bough

GAUGE

22 sts and 30 rows = 4" / 10cm in stocking stitch

NEEDLES

US 6 / 4mm needles 16" / 40cm circular and/or dpns or circulars for your preferred method of working small circumferences in the round.



NOTIONS

Scrap yarn, stitch marker, tapestry needle, scissors.

SIZES

baby[toddler, child–adult small, adult medium, adult large, adult x-large]

To fit head circumference of approx: 16[18, 20, 22, 24, 26]" / 40[45, 50, 55, 60, 65]cm

Finished hat circumference: 12 $\frac{3}{4}$ [14 $\frac{1}{2}$, 16, 17 $\frac{1}{2}$, 19 $\frac{1}{4}$, 20 $\frac{3}{4}$]" / 32[36, 40, 44, 48, 52]cm

Finished length with brim folded: 5 $\frac{1}{4}$ [6, 6 $\frac{3}{4}$, 7 $\frac{3}{4}$, 8 $\frac{3}{4}$, 9 $\frac{3}{4}$]" / 13[15, 17, 19.5, 22, 24.5]cm

Shown in adult large.



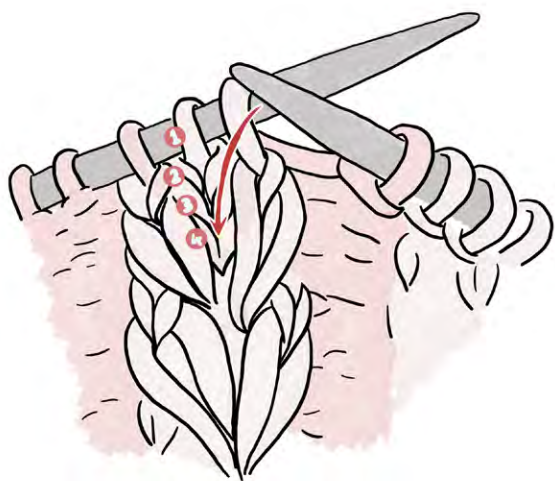
ABBREVIATIONS

C4B	slip 2 sts to cable needle and hold at back, k2, k2 sts from cable needle	EOR	end of round
C4F	slip 2 sts to cable needle and hold at front, k2, k2 sts from cable needle	k	knit
C5F	slip 3 sts to cable needle and hold at front, k2, k3 sts from cable needle	k2tog	knit 2 together (a right leaning decrease)
C6B	slip 3 sts to cable needle and hold at back, k3, k3 sts from cable needle	p	purl
C6F	slip 3 sts to cable needle and hold at front, k3, k3 sts from cable needle	p2tog	purl 2 together (a right leaning decrease)
DCDR	insert right needle into 1st, then 3rd st on left needle from front, slip first 3 sts off left needle, pick up free st with left needle at the back then return slipped sts to left needle. K2tog twice. 4 sts decreased to 2.	rep	repeat
dpn(s)	double pointed needle(s)	sl1 pwise	slip 1 st purlwise individually with yarn at wrong side
		ssk	slip, slip, knit – slip 2 sts knitwise individually, insert left needle into slipped sts from left to right, knit these 2 sts together (a left leaning decrease)
		st(s)	stitch(es)
		w+t	wrap and turn



DOUBLE DIP STITCH

Worked over a column of 3 knit stitches.



Step 1: insert right needle tip into the 4th stitch down from the 2nd stitch on the left needle (including the stitch on the needle), going through the fabric from front to back.



Step 2: wrap yarn as if to knit and pull a loop of yarn through to the right side, leave this elongated loop on the right needle tip and treat it as a new stitch.

Step 3: k3.

Step 4: insert the right needle tip into the same stitch as before; wrap the yarn and pull up 2nd loop. You may find it easier to use the left needle tip to pull up this loop and then place it on the right needle tip.

3 stitches have been turned into 5.

VIDEO

Click on the video thumbnail or scan the QR code for a video on how to Knit Double Dip Stitch.



DIRECTIONS

BRIM SECTION

Provisionally cast on 60[72, 84, 96, 108, 120] sts. Join in round being careful not to twist. Place a marker to mark the end of the round (EOR).

Work in st st until hat measures 4 $\frac{3}{4}$ [5 $\frac{1}{4}$, 5 $\frac{3}{4}$, 6 $\frac{1}{4}$, 6 $\frac{3}{4}$, 7 $\frac{1}{4}$]/ 12[13, 14.5, 15.5, 17, 18]cm from cast-on edge.

JOIN FOLDED BRIM

Remove waste yarn from provisional cast-on and return resulting live stitches to spare needles.

Next rnd: hold cast on sts behind working stitches with needles parallel; knit the first stitch on each needle together, continue knitting stitches together in this way to the EOR.

TRANSITION FROM BRIM SECTION TO CROWN SECTION

Reverse direction of knitting as follows:

Slip EOR marker, w+t. The next rnd will be worked in the opposite direction. Slip the EOR marker to the right needle tip before continuing.

Next rnd: (k2, p2) to 4 sts before end, k2, p1, purl wrapped stitch together with wrap.

Turn work inside out so that you can continue knitting in the direction established in the previous round more comfortably.

RIBBED SECTION

Work 6[7, 7, 8, 9, 10] more rnds in 2x2 rib as established in previous rnd.

CABLE SECTION

Work cabled section from written directions or chart.

Rnd 1 – inc rnd: *k1, m1L, k1, p2, (k1, m1L, k1) 3 times, p2, rep from * to EOR.

80[96, 112, 128, 144, 160] total sts.

Rnd 2: (k3, p2, k9, p2) to EOR.

Rnds 3 & 4: rep last rnd twice more.

Rnd 5: *work double dip stitch over next 3 sts, p2, k3, C6F, p2, rep from * to EOR.

Rnd 6: *sl1 pwise, k3, sl1 pwise, p2, k9, p2, rep from * to EOR.

Rnd 7: *ssk, k1, k2tog, p2, k9, p2, rep from * to EOR.

Rnd 8: *k3, p2, k9, p2, rep from * to EOR.

Rnd 9: *work double dip stitch over next 3 sts, p2, C6B, k3, p2, rep from * to EOR.

Rnd 10: *sl1 pwise, k3, sl1 pwise, p2, k9, p2, rep from * to EOR.

Rnd 11: *ssk, k1, k2tog, p2, k9, p2, rep from * to EOR.

Rnd 12: *k3, p2, k9, p2, rep from * to EOR.

Rnds 13–16: rep rnds 5–8.

Rep rnds 9 –16: 1[1, 2, 3, 4, 4] more times.



RIBBED BRIM

To make your Crown-shy beanie with a ribbed brim; cast on for your size using your preferred cast on method for 2x2 ribbing and begin at the Ribbed Section.

CROWN SHAPING

Switch to needles for working a smaller circumference when stitches no longer fit comfortably on the needle.

Rnd 1: *work double dip stitch over next 3 sts, p2, C6B, k3, p2, rep from * to EOR.

Rnd 2: *sl1 pwise, k3, sl1 pwise, p2, k9, p2, rep from * to EOR.

Rnd 3: *ssk, k1, k2tog, p2, k5, ssk, k2, p2, rep from * to EOR. 75[90, 105, 120, 135, 150] sts.

Rnd 4: *k3, p2, k8, p2, rep from * to EOR.

Rnd 5: *work double dip stitch over next 3 sts, p2, k3, C5F, p2, rep from * to EOR.

Rnd 6: *sl1 pwise, k3, sl1 pwise, p2, k8, p2, rep from * to EOR.

Rnd 7: *ssk, k1, k2tog, p2, k2, k2tog, k4, p2, rep from * to EOR. 70[84, 98, 112, 126, 140] sts.

Rnd 8: *k3, p2, k7, p2, rep from * to EOR.

Rnd 9: *work double dip stitch over next 3 sts, p2, C4B, k3, p2, rep from * to EOR.

Rnd 10: *sl1 pwise, k3, sl1 pwise, p2, k3, ssk, k2, p2, rep from * to EOR. 75[90, 105, 120, 135, 150] sts.

Rnd 11: *ssk, k1, k2tog, p2, k2, C4F, p2, rep from * to EOR.

Rnd 12: *k3, p2, k6, p2, rep from * to EOR.

Rnd 13: *work double dip stitch over next 3 sts, p2, DCDR, k2, p2, rep from * to EOR. 65[78, 91, 104, 117, 130] sts.

Rnd 14: *sl1 pwise, k3, sl1 pwise, p2, k4, p2, rep from * to EOR.

Rnd 15: *ssk, k1, k2tog, p2, ssk, k2tog, p2, rep from * to EOR. 45[54, 63, 72, 81, 90] sts.

Rnd 16: *k3, p2, k2, p2, rep from * to EOR.

Rnd 17: *work double dip stitch over next 3 sts, p2, ssk, p2, rep from * to EOR. 50[60, 70, 80, 90, 100] sts.

Rnd 18: *sl1 pwise, k3, sl1 pwise, p5, rep from * to EOR.

Rnd 19: *ssk, k1, k2tog, p2tog, p1, p2tog, rep from * to EOR. 30[36, 42, 48, 54, 60] sts.

Rnd 20: *k3, p3, rep from * to EOR.

Rnd 21: *work double dip stitch over next 3 sts, p2tog, p1, rep from * to EOR. 35[42, 49, 56, 63, 70] sts.

Rnd 22: *sl1 pwise, k3, sl1 pwise, p2, rep from * to EOR.

FINAL CROWN DECREASES

Rnd 23: *ssk, k1, k2tog, p2tog, rep from * to EOR. 20[24, 28, 32, 36, 40] sts.

Rnd 24: (k3, p1) to EOR.

Rnd 25: (k2, ssk) to EOR. 15[18, 21, 24, 27, 30] sts.

Rnd 26: knit.

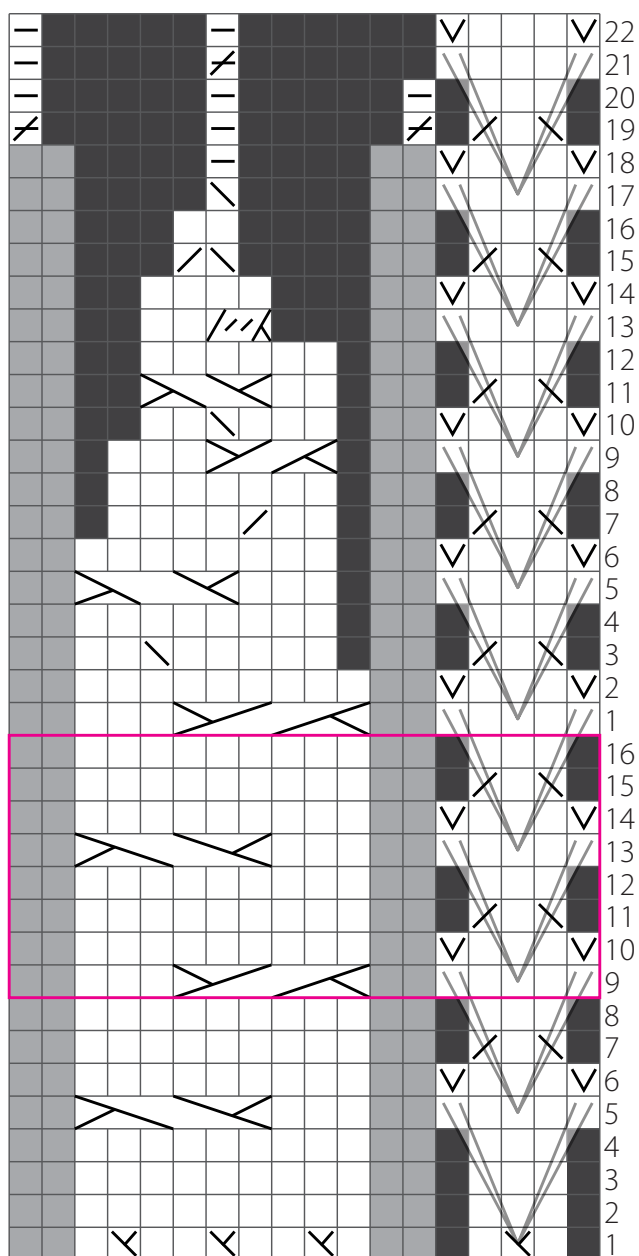
Rnd 27: (k2tog, k1) to EOR. 10[12, 14, 16, 18, 20] sts.

FINISHING

Break yarn and draw through remaining 10[12, 14, 16, 18, 20] sts, going around all sts twice. Pull up tightly and fasten securely on inside.

Weave in ends and block.

CHART



KEY

- | | |
|-------------|-----------------------------|
| □ knit | ▤ k2tog |
| ■ or ▨ purl | ▥ ssk |
| ▧ m1L | ▩ p2tog |
| ▨ DCDR | ▫ sl1 pwise with yarn at WS |
| ▬ C6B | ■ no stitch |
| ▭ C6F | |
| ▮ C5F | |
| ▯ C4F | |
| ▰ C4B | |
- double dip st
see directions
on page 5

Rep rnds 9 –16:
1[1, 2, 3, 4, 4]
more times.