



# Wiosna Shawl

Knitting pattern  
by Comfort Zone Knits

The pattern has been created  
in collaboration with  
Martin's Lab Yarn.

@comfortzoneknits  
#wiosnashawl  
#comfortzoneknits



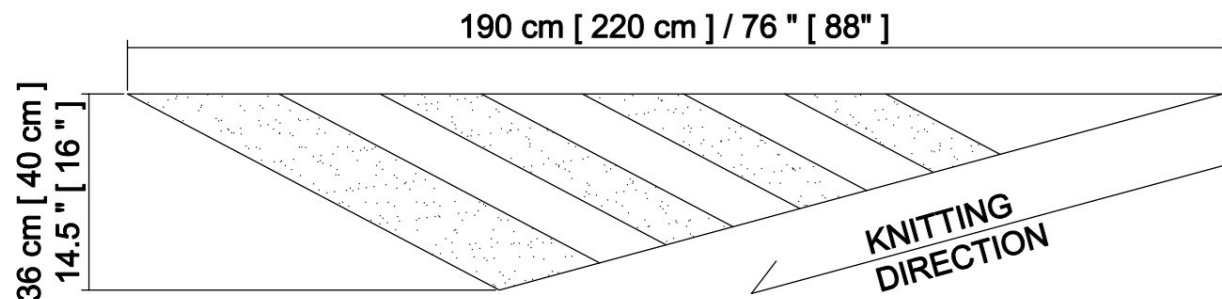
"Wiosna" is an airy and delicate, one-skein shawl in the shape of an asymmetrical triangle. It is worked seamlessly on bias, sideways from the tip to the bind-off edge. The shawl is made with an alternating Garter Stitch and Lace Stitch and finished with picots, which adds charm and lightness.

### Sizes

S [ L ]

Length: 190 cm [ 220 cm ] / 76 " [ 88 " ]

Depth: 36 cm [ 40 cm ] / 14.5 " [ 16 " ]



### Yarn

To make the shawl you'll need a skein of fingering weight yarn.

About 360 m / 394 y for the size "S" and 460 m / 504 y for the size "L".

The brown-pink speckled sample was knit with Martin's Lab Comfy Merino (100% merino wool, 400 m / 437 y per 100 g), in "For the Love" colorway.

The light pink sample was knit with Martin's Lab Merino Singles (100% merino wool, 366 m / 400 y per 100 g), in "Cherry Flowers" colorway.

The blue sample was knit with Martin's Lab Tibetan Singles (65% merino wool, 20% silk, 15% yak, 480 m / 525 y per 120 g), in "Denim" colorway.

Note: remember please, that the yardage is estimated, but the size of the shawl is easy adjustable.

## *Needles & Notions*

4.0 mm [ 3.75 mm ] / US #6 [ US #5 ] circular needles ( 80 cm / 32" long )  
row counter, stitch markers (optionally), tapestry needle for weaving ends

## *Gauge*

19 sts and 42 rows = 10 x 10 cm / 4 x 4 " - in garter stitch worked flat with 4.0 mm [ 3.75 mm ] / US #6 [ US #5 ] needles.

Note: measure the gauge after washing and blocking the swatch. Obtaining the correct gauge is not necessary in case of this project, however all differences will affect the finished size of the item as well as the required yardage.

## *Pattern techniques*

### **Cable Cast-On:**

- <https://www.youtube.com/watch?v=XFkYejFGwsl>
- <https://www.youtube.com/watch?v=3xRrTJDWf0E>

### **German Twisted Cast-On:**

- <https://www.youtube.com/watch?v=lToPdp4VU4>
- <https://www.youtube.com/watch?v=oWHRfvU5im0>

### **Picot Bind-Off:**

- <https://www.youtube.com/watch?v=aJOJgFwzERc>



## Instructions

In this shawl you will be increasing stitches along the right edge by making kfb stitch in each, RS and WS rows. At the same time, you will be decreasing stitches along the left edge in each RS row. Each two following rows (RS+WS) adds to the shawl one stitch. All kfb stitches should be knit rather loosely - if you're not able to make them enough loose and your edge seems to be too tight, make a "yo" at the beginning of each row and then drop this "yo" at the end of next row.

### Part 1 – Garter stitch

Using needles in size 4.0 mm [ 3.75 mm ] / US #6 [ US #5 ] and German Twisted or Cable cast-on method **CO 5 sts**. Knit one row on WS.

Row 1 (RS): k1, kfb, k2tog, k1.

Row 2 (WS): k to last 2 sts, kfb, k1. 1 st inc. - 6 sts

Row 3 (RS): k1, kfb, k to last 3 sts, k2tog, k1.

Row 4 (WS): k to last 2 sts, kfb, k1. 1 st inc - 7 sts

Repeat rows 3 and 4 forty four times more. 51 sts on the needle

### Part 2 – Lace stitch

Work the lace pattern according to the charts or written instructions (all increases and decreases are incorporated into the charts).

It might be helpful to place one marker before the first whole repeat of the lace pattern and another marker after the last whole repeat of the pattern – it will help you to keep track in knitting. Remember to move the markers each time when you complete adding or decreasing stitches of the next repetition of the pattern. The chart and written instructions are placed on page 7.

Work rows 1 to 16 of the lace pattern once and then repeat once again rows 1 to 7.

Next row [WS]: k do last 2 sts, kfb, k1. 63 sts on the needle

### Part 3 – Garter stitch

Row 1 (RS): k1, kfb, k to last 3 sts, k2tog, k1.

Row 2 (WS): k to last 2 sts, kfb, k1.

Work rows 1 and 2 twelve times in total.

*75 sts on the needle*

### Size "S" only

Repeat parts 2 and 3 of the pattern two times more.

*123 sts on the needle*

### Size "L" only

Repeat parts 2 and 3 of the pattern three times more.

147 sts on the needle

## Part 4 – Lace stitch

Work following rows 1 to 16 of the lace pattern until you have about 5 g of yarn left (for bind-off). Finish the lace pattern with any even row of the lace stitch.

## Finishing

### Picot bind-off

\*CO 3 sts with Cable cast-on method, BO 6 sts\*, repeat between \* \* until the end.

Cut off the yarn, weave in loose ends. Soak the shawl in a sink with lukewarm water and a mild wool washing liquid. When the shawl soaks up the water well, empty the sink. Gently squeeze to remove excess water. Place it on a towel and roll it to remove any remaining moisture. Lay it flat giving it a triangle shape, pin it and let it dry. Wear with pleasure 😊.

## Words of gratitude

I would love to thank my lovely test knitters, for their invaluable help in creating this pattern.

## Copyright agreement

This pattern is the property of Comfort Zone Knits brand. It is copyrighted and for personal use only which means: you can knit the shawl for yourself, for a gift, for charity or for any other non-profit use. You cannot reproduce, translate, sell or share this pattern. You cannot also sell items made from this pattern without my permission.

Porąbka, Poland, June 2025.





For pattern support, please contact:  
[comfort.zone.knits@gmail.com](mailto:comfort.zone.knits@gmail.com).  
 Ravelry ID: [comfortzoneknits](#)

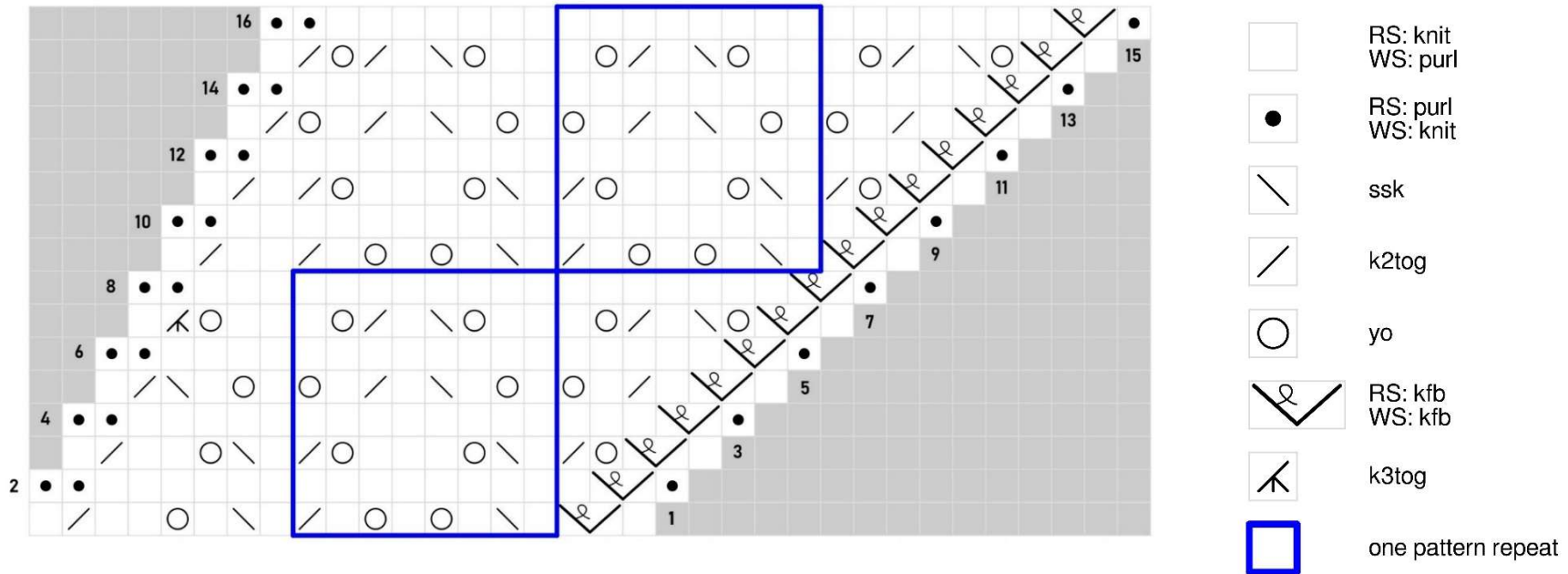
## Abbreviations

**BO** – bind-off;  
**CO** – cast-on;  
**dec** – decrease;  
**inc** – increase;  
**k** – knit;  
**kfb** – add 1 st – knit into the front and back of the same stitch;  
**k2tog** – knit 2 stitches together;  
**k3tog** – knit 3 stitches together;  
**LN** – left hand needle;  
**p** – purl;  
**RN** – right hand needle;  
**RS** – right side;  
**ssk** – slip 2 stitches individually as if to knit, then knit them together through the back loops;  
**st, sts** – stitch, stitches;  
**WS** – wrong side;  
**yo** – yarn over needle.



## Lace pattern - chart

Follow the chart from bottom to top, from right to left side on RS rows and from left to right side on WS rows.



### Written instructions

**Row 1 [RS]:** k1, kfb, [ k1, ssk, k1, yo, k1, yo, k1, k2tog ], repeat in [ ] to last 9 sts, k1, ssk, k1, yo, k2, k2tog, k1.

**Row 2 and all even numbered WS rows:** k2, p to last 2 sts, kfb, k1.

**Row 3 [RS]:** k1, kfb, yo, k2tog, [ k1, ssk, yo, k3, yo, k2tog ], repeat in [ ] to last 8 sts, k1, ssk, yo, k2, k2tog, k1.

**Row 5 [RS]:** k1, kfb, k1, k2tog, k1, yo, [ k1, yo, k1, ssk, k1, k2tog, k1, yo ], repeat in [ ] to last 7 sts, k1, yo, k1, ssk, k2tog, k1.

**Row 7 [RS]:** k1, kfb, yo, ssk, k1, k2tog, yo, k1, [ k2, yo, ssk, k1, k2tog, yo, k1 ], repeat in [ ] to last 6 sts, k2, yo, k3tog, k1.

**Row 9 [RS]:** k1, kfb, [ k1, ssk, k1, yo, k1, yo, k1, k2tog ], repeat in [ ] to last 5 sts, k2, k2tog, k1.

**Row 11 [RS]:** k1, kfb, yo, k2tog, [ k1, ssk, yo, k3, yo, k2tog ], repeat in [ ] to last 4 sts, k1, k2tog, k1.

**Row 13 [RS]:** k1, kfb, k1, k2tog, k1, yo, [ k1, yo, k1, ssk, k1, k2tog, k1, yo ], repeat in [ ] to last 3 sts, k2tog, k1.

**Row 15 [RS]:** k1, kfb, yo, ssk, k1, k2tog, yo, k1, [ k2, yo, ssk, k1, k2tog, yo, k1 ], repeat in [ ] to last 10 sts, k2, yo, ssk, k1, k2tog, yo, k2tog, k1.