

Book extract

Janet Rehfeldt

Winterscape

Tiny beads highlight the motifs on these blue-and-white socks for women, knitted from the toe up



Winters spent in America's Sierra Mountains were the inspiration for these socks by Janet Rehfeldt. "Ridges of snowdrifts cascade around the foot, while snowflakes and beaded snowdrops fall along the leg, bringing to mind beautiful winterscapes," she says. A crochet hook is used to place the beads.

SOCK

CAST-ON

With MC, cast on 10 sts (or wraps) using closed-toe cast-on of choice, ending with 20 sts double after finished cast-on. Divide sts over three needles as follows: 5-10-5.

TOE SHAPING

Rnd 1: Needle 1: knit to last st, M1L, K1; needle 2: K1, M1R, knit to last st, M1L, K1; needle 3: K1, M1R, knit rem sts.

Rnd 2: Knit.

Rep rnds 1 and 2, inc 4 sts every other round to 60 (68:80:88) sts; then inc 0 (1:0:1) st at beg of needle 2, and 0 (1:0:1) st at beg of needle 3. 60 (70:80:90) sts.

Divide sts as follows: 15-30-15 (17-35-18: 20-40-20:22-45-23).

FOOT

Rnds 1 and 2: With MC, knit.

Rnd 3: With CC, knit.

Rnd 4: P6, K3, *P7, K3; rep from * around, P1.

Rnds 5-7: With MC, K6, Sl3, *K7, Sl3; rep from * around, K1.

Rnd 8: *K5, C2R, K1, C2L; rep from * around.

Rnds 9-11: Knit.

Rnd 12: With CC, knit.

Rnd 13: P1, K3, *P7, K3; rep from * around, P6.

Rnds 14-16: With MC, K1, Sl3, *K7, Sl3; rep from * around, K6.

Rnd 17: *C2R, K1, C2L, K5; rep from * around.

Rnd 18: Knit.

Rep rnds 1-18 until sock measures 6¼cm less than total foot measurement; end with rnd 2 or 11.

SHORT-ROW HEEL DECREASES

Row 1: Work across needle 1 to last 2 sts, wyif sl 1 st to LH needle, wyib return st to RH needle. Turn work (wrap and turn complete).

Row 2: Purl across needle 1 and with same needle, purl across needle 3 to last 2 sts, wyib, sl 1 st to LH needle, wyif return st to RH needle. Turn.

Row 3: Knit to last 3 sts, sl and wrap next st as in row 1, turn.

Row 4: Purl to last 3 sts, sl and wrap next st as in row 2, turn.

Cont to work heel sts, slipping and wrapping an additional st each row until 10 (12:13:15) sts have been slipped and/or wrapped on each side of 10 (11:14:15) centre heel sts.

SHORT-ROW HEEL INCREASES

Row 1: Knit across 10 (11:14:15) sts to closest wrapped st, K1 (knit st and wrap tog as 1 st), sl and wrap next st, turn.

Row 2: Purl across 11 (12:15:16) sts to closest wrapped st, P1 (purl st and wrap tog as 1 st), sl and wrap next st, turn.

Cont to work heel sts, bringing 1 st back into work each row until you've worked all sts. On last 2 rows, knit across, wrap last st, turn, purl across, wrap last st, turn.

Knit each of these 2 sts with their wrap tog as 1 st when you come to them on first rnd of leg.

LEG AND CUFF

Return front sts (needle 2) to needle if placed on a holder.

Knit across needle 3 and needle 1, inc 0 (1:0:0) st on each needle. Mark needle 2 as beg of rnd. 60 (72:80:90) sts.

Leg: With MC, knit 3 rnds. Beg working with both colours at the same time, following chart (for your size) and using MC for background and CC for motif. Work rnds 16-20 of chart once, then work rows 1-20 of graph 2 times, drop CC.

Cuff: With MC work in K2, P2 ribbing for 2½cm (1in) (4th size only: dec 2 sts on first rnd for 88 sts).

With CC, work 6 rnds of knit.

Loosely cast off knitwise. Weave in ends. ☺

SIZE

	S	M	L	XL	
LEG CIRCUM-FERENCE	17¾	20¼	23½	26	cm
	7	8	9¼	10¼	in
FOOT CIRCUM-FERENCE	17¾	20¼	23½	26	cm
	7	8	9¼	10¼	in

YARN

Cascade Yarns Heritage (4ply weight; 75% merino superwash wool, 25% nylon; 400m/437yds per 100g skein)

MC Denim 5604; 1 x 100g skein

CC Snow 5618; 1 x 100g skein

NEEDLES & ACCESSORIES

1 set 2.75mm (UK 12/US 2) double-pointed needles

1mm steel crochet hook

Approx. 9g size 6/0 beads in silver-lined light crystal blue

TENSION

35 sts and 44 rnds to 10cm (4ins) in St st

SPECIAL ABBREVIATIONS

C2L: Cross 2 Left. Knit into back of 2nd st, then knit first st, sl both sts off needle at same time.

C2R: Cross 2 Right. Knit into front of 2nd st, then knit first st, sl both sts off needle at same time.

CC beaded stitch: Knit st in CC, return st to LH needle, place bead on crochet hook, insert hook into st, pull st through bead, place st on RH needle.

CHARTS

Chart: 1st and 3rd sizes

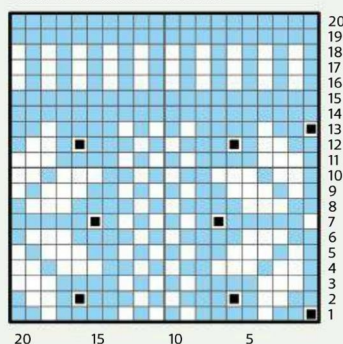
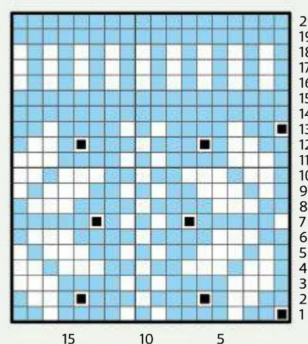


Chart: 2nd and 4th sizes



KEY

- Blue square: Yarn A
- White square: Yarn B
- Black square: Yarn B beaded st