

# WINTER TULIPS



*Tiptoe through the tulips  
in these stranded mittens  
which explore colour gradients.*

By Gayle Colebrook for PK Knits

Ravelry: [pearlknitknits](#)

Instagram: [@pearlknitknits](#)



*Skill level: Advanced Beginner / Intermediate*

## SUPPLIES

1. **Yarn:** Knit Picks PALETTE (1.76 oz/50g, 231y/211m, 100% Peruvian Highland Wool):

- ✿ Stellar Heather #26053 – 1 skein
- ✿ Bouquet Heather #25091 – 7g
- ✿ Tea Rose #25997 – 7g
- ✿ Ice Lily #25999 – 10g
- ✿ Blush #23718 – 5g
- ✿ White #23728 – 15g

One skein of the main color will be needed, and only a little of the secondary colors, of which I have listed approx g used.

2. **Needles:**

- ✿ One set of Size 1 (2.5mm) dpns
- ✿ If working the optional cuff lining with a provisional cast-on and three-needle join, an extra set of Size 1 (2.5mm) dpns or a circular needle will be required.

3. **Other notions:** tapestry needle, waste yarn, measuring tape, scissors, crochet hook (for fixing errors), blocking tools



## GAUGE

As established on 2.5 mm (US 1) needles, at 4"/10 cm:

1. Stockinette: 30 sts x 38 rows (for reference)
2. Pattern: 36 sts x 36 rows
3. Ribbing: 30 sts x 36 rows

## FINISHED SIZE

Hand circumference above thumb: 8" (20.5 cm)

Length from wrist: 8.25" (21 cm)

Length of cuff: 4" (10 cm)

Total length of mitten: 12.25" (31 cm)

| Abbreviations Guide |   |
|---------------------|---|
| CO                  | Cast on                                       |
| dpns                | Double-pointed needles                        |
| k2tog               | Knit two together<br>(right-leaning decrease) |
| MC                  | main color                                    |
| ssk                 | Slip slip knit<br>(left-leaning decrease)     |
| st(s)               | Stitch(es)                                    |
| St st               | Stockinette stitch                            |

## INSTRUCTIONS (\*\*\*) indicates a video tutorial is available – see list at end)

**DESIGNER NOTE:** as there are two options for the cuff, with or without lining, and different cast on methods depending on how the lining will be attached, please read the Cuff instructions through before beginning to knit.

### Mitten cuff

#### **WITH optional cuff lining:**

1. With MC, CO **60 sts** and distribute evenly over needles.
  - ✿ Use a *provisional cast-on* \*\*\* if attaching the lining with a *three-needle join*. \*\*\*
  - ✿ Use a *regular cast-on* (long-tail, cable etc.) if attaching the lining by sewing it down.
2. Join yarn, being careful not to twist the work. Place a marker to indicate the beginning of the row.
3. K 34 rows in St st.
4. P 1 row (this is to facilitate the turn of the lining and create a crisp bottom edge to the mitten).
5. Work the Corrugated Ribbing Chart in k1p1 ribbing, repeating the 4 st multiple 15x over each round. Work the chart twice, then repeat rows 1 & 2 (34 rows total).
6. When chart is complete:
  - If using a *provisional cast-on*, join the lining to the cuff at the wrist:
    - ✿ Remove the waste yarn and load the live stitches onto the extra set of needles.
    - ✿ Place a marker for the beginning of the row.
    - ✿ Using MC, K 1 row in a *three-needle join*\*\*\*, working each live cuff stitch together with its corresponding provisional cast on lining stitch on the second set of needles.
  - If using a *regular cast-on*, you will sew it down at the cuff when finishing. K 1 row in MC.

### WITHOUT cuff lining:

1. CO **60 sts** and distribute evenly over the needles. Join yarn, being careful not to twist the work. Place a marker for beginning of row.
2. Work the Corrugated Ribbing Chart in k1p1 ribbing, repeating the 4 st multiple 15x over each round. Work the chart twice, then repeat rows 1 & 2 (34 rows total).
3. K 1 row in MC.

### Transition to the body of the mitten (with or without lining):

P 3 rows in MC (this is reverse stockinette).

### Mitten body

#### Left Mitten:

Begin working the Left Mitten Chart, from right to left, using St st and changing colors as indicated.

Don't carry yarn more than five stitches across, especially on the rows with an extended number of same-color stitches. *To avoid a lot of finishing work involving yarn tails, weave in the ends when changing colors.* \*\*\*

On row 23, set up the *Afterthought Thumb*. \*\*\* Using a length of scrap yarn, k the 13 stitches indicated by the bold red line, then transfer them back to the left needle and proceed with the chart (The scrap yarn stitches get reknitted in pattern. This creates provisional sts to be removed later, when the stitches above and below this line will be picked up for knitting the thumb.)

From row 62, begin shaping the top of the mitten. Proceed according to chart, working a left-slanting decrease at each right edge (SSK), and a right-slanting decrease at each left edge (K2tog).

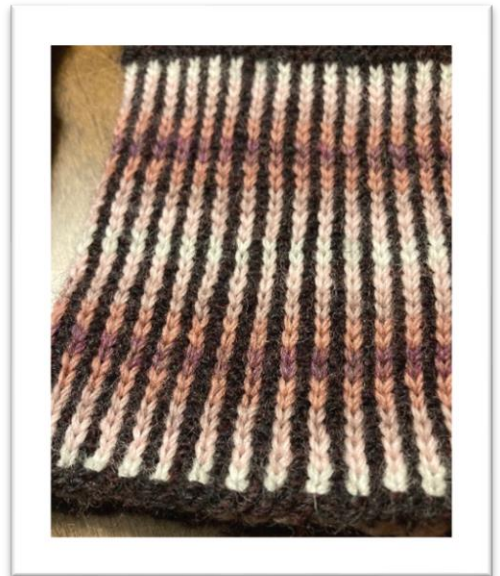
To finish, leave a long tail of yarn; to close the mitten, graft the remaining stitches together using *Kitchener stitch*. \*\*\*

#### **Mitten thumb**\*\*\*

With one of the double-pointed needles, starting at right edge, pick up **13** stitches directly below the waste yarn plus **2** more sts in the gap at the left end. (**15** sts). With a 2<sup>nd</sup> needle, pick up the stitches directly above the waste yarn, plus **2** more sts in the remaining gap. Redistribute the gap stitches to have one on each end of each needle (gap st + 13 + gap st). You will have a total of **30** sts. Remove the scrap yarn. Arrange the stitches on more needles as desired and proceed according to chart.

From row 19, begin shaping the top of the thumb. Proceed according to chart, working a left-slanting decrease at each right edge (SSK), and a right-slanting decrease at each left edge (K2tog).

To finish, leave a long tail of yarn and graft the remaining stitches together using Kitchener stitch.



## Right Mitten:

Using the [Right Mitten Chart](#), proceed as for Left Mitten.

## Finishing

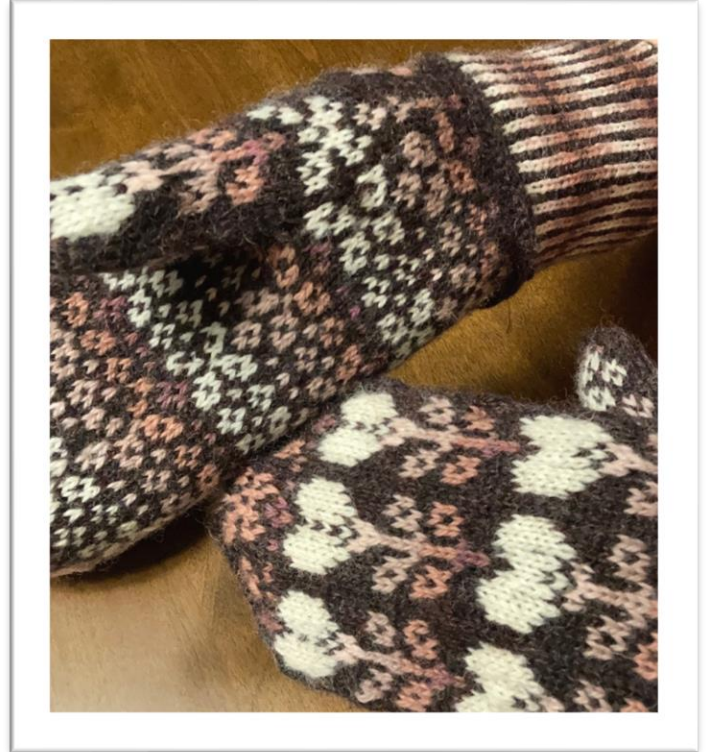
Turn mitten inside out, and weave in and trim yarn ends.

If a cuff lining was knitted with a regular cast-on, pin it in place and sew it to the mitten at the wrist, using a length of MC yarn.

If there's any looseness around the joins at the base of the thumb, use the tail of the joined yarn and a darning needle to tighten up the gaps before weaving in/tying off. \*\*\*

Adjust any irregular-looking stitches by gently tugging the legs of neighbouring stitches to redistribute the yarn tension.

Block mittens to size, using the method of your choice. I like to steam the mittens with my iron set to "wool", using an ironing cloth. I find that they get damp enough to shape and the stitches flatten out beautifully.



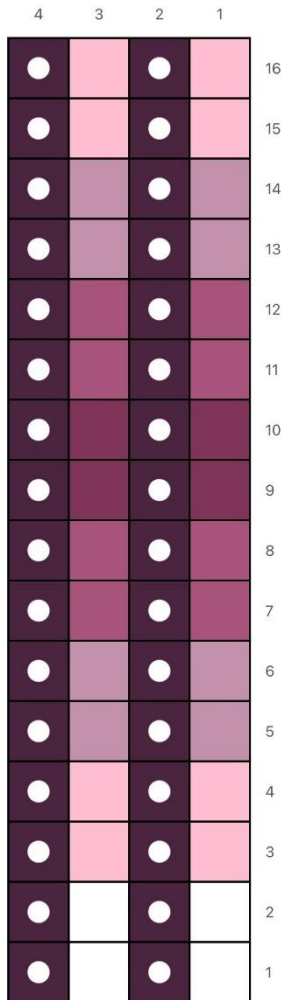
**DESIGNER NOTE :** I've designed these mittens to have a precise color progression in the cuff and so that the tulips end up white. However, the design may be simplified (i.e. no weaving in ends) by using a variegated yarn; the cuff length may be adjusted.

## LIST OF VIDEO TUTORIALS FOR VARIOUS TECHNIQUES

- ✿ [Provisional cast-on using a crochet hook](#): *Very Pink Knits*
- ✿ [Three needle join](#): *Cottage Chick Knits*
- ✿ [Trapping in floats by twisting or weaving](#): *Roxanne Richardson*
- ✿ [Kitchener Stitch Tutorial](#): *WEBS*
- ✿ [Afterthought Thumb](#): *Beth Brown Reinsel*
- ✿ [Tightening gaps in the join of a mitten thumb](#): *Roxanne Richardson*

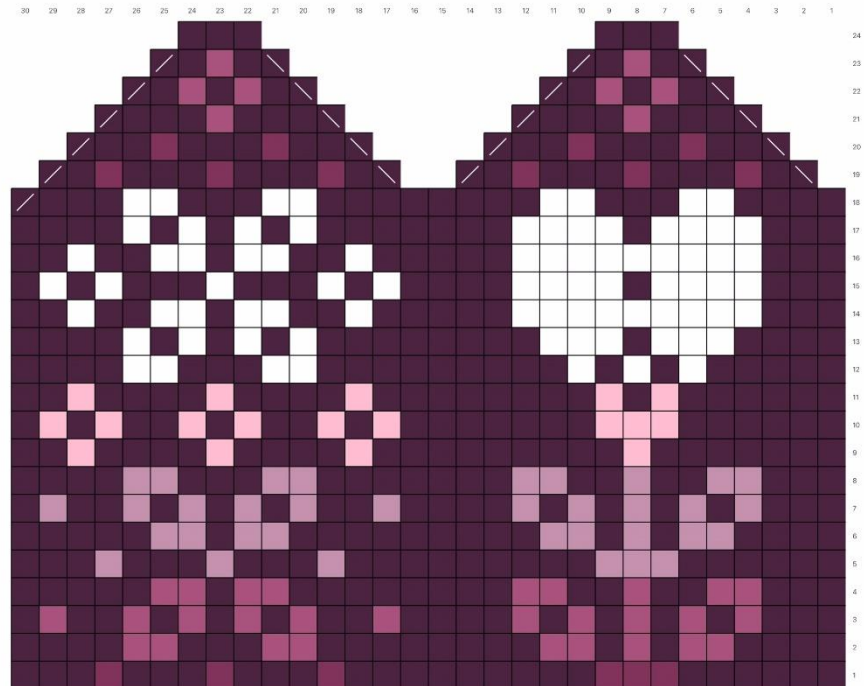
This pattern is for personal use only. Please do not redistribute or use for commercial purposes.

## Corrugated Ribbing Chart



- p (Stellar Heather)
- k (White)
- k (Blush)
- k (Ice Lily)
- k (Tea Rose)
- k (Bouquet Heather)

## Thumb Chart



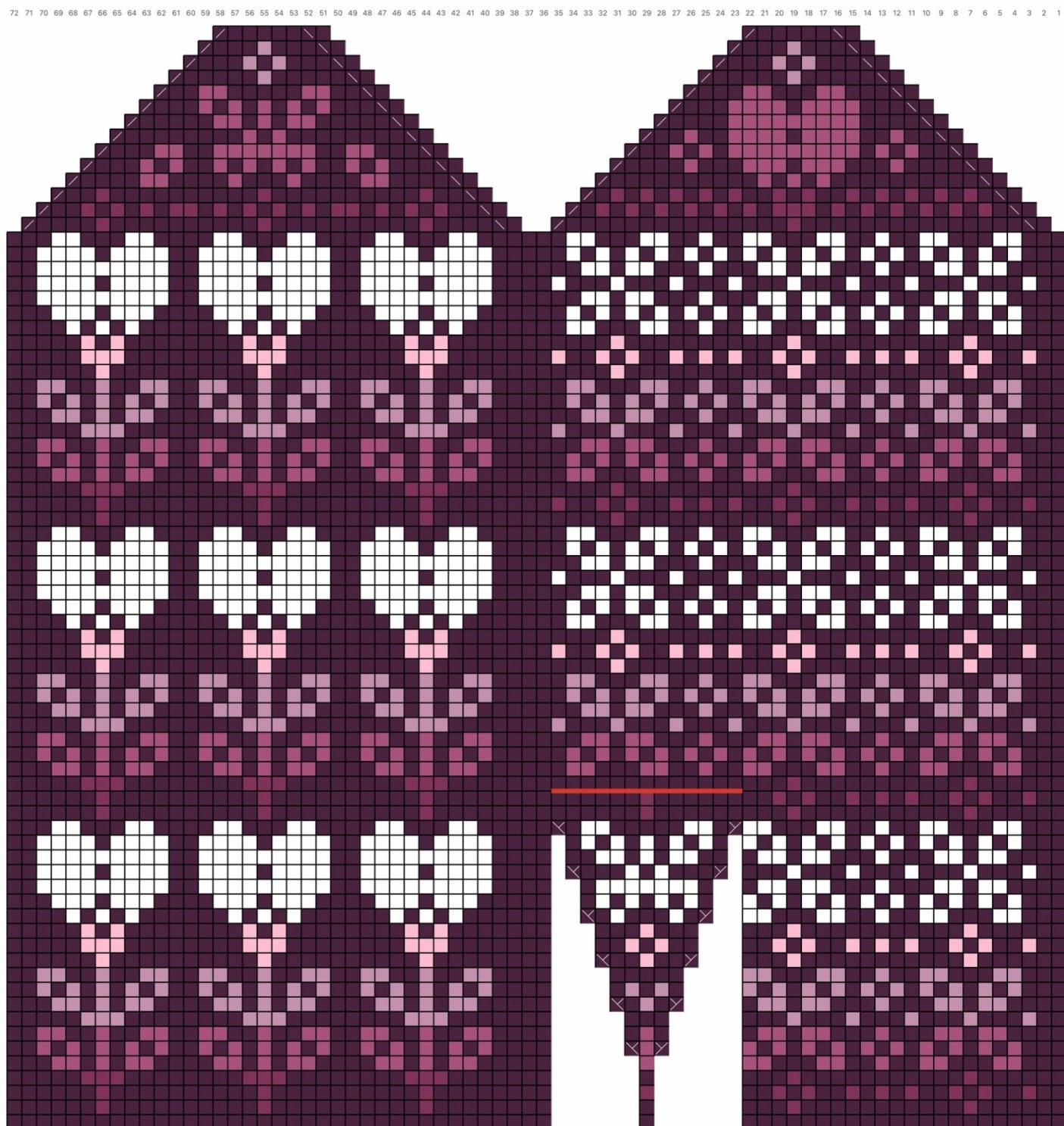
Tulip motif faces outwards.

- k (Stellar Heather)
- k (Bouquet Heather)
- k (Tea Rose)
- k (Ice Lily)
- k (Blush)
- k (White)
- SSK (Stellar Heather)
- k2tog (Stellar Heather)



# Left Mitten Chart

- k (Stellar Heather)
- k (Bouquet Heather)
- k (Tea Rose)
- k (Ice Lily)
- k (Blush)
- k (White)
- right-slanting make 1 (Stellar Heather)
- left-slanting make 1 (Stellar Heather)
- SSK (Stellar Heather)
- k2tog (Stellar Heather)



# Right Mitten Chart

- k (Stellar Heather)
- k (Bouquet Heather)
- k (Tea Rose)
- k (Ice Lily)
- k (Blush)
- k (White)
- right-slanting make 1 (Stellar Heather)
- left-slanting make 1 (Stellar Heather)
- SSK (Stellar Heather)
- k2tog (Stellar Heather)

