



Winter Jewels Hat

Brilliant white colourwork against vibrant blocks gives a youthful twist and a fresh feel to a traditional technique



Designer Lisa McFetridge

Lisa has been knitting all her life. Hats, mittens and cowls are favorite items to design using warm and visible spots of colour

to make cold days seem more inviting. Former owner of the IdleHandsPattern Company, she now designs and sells downloadable patterns and teaches Hat Design at the Black Sheep Knitting Shop in Needham, Massachusetts, USA.

“Jewel tones are so vibrant and using a white against them sets off the designs so nicely. The patterns are traditional Fair Isle, but in modern colours and a pretty shape, they translate beautifully to make a 21st Century ‘classic’.”

DIFFICULTY INTERMEDIATE

SKILLS USED

- Increasing & decreasing
- Colourwork (stranded)
- Knitting in the round
- Working from a chart

FINISHED

MEASUREMENTS

Toddler (Child, Adult)

- Circumference:
35.5 (45.5: 56)cm/
14 (18: 22)in
- Depth:
19.5 (20.5: 21)cm/
7¾ (8: 8¼)in

NOTIONS

- A set 5 of 4.5mm (US 7) double-pointed needles
- Stitch marker
- Tapestry needle
- Fleece lining (optional)

YARN USED

Cascade, 220

- 100% wool
- 100g/200m/220yd
- WPI: 9
- Shades:
MC: Azure (8892)
CC1: Lupin (9541)
CC2: Anis (8908)
CC3: White (8505)
CC4: Magenta (7803)
CC5: Highland Green (9430)
- Approx 40m/44yd needed of each colour

TENSION

- Work 20 sts and 24 rows in stranded st st to measure 10x10cm/4x4in using 4.5mm (US 7) needles, or size required to obtain correct tension.



PATTERN NOTES

A video tutorial on the two-colour long tail cast on and knitted braid can be found here: www.knitwhits.wordpress.com/2008/09/07/knitting-tip-6-knitting-a-braided-edge/

Row tension may be difficult to match for some knitters. If the knitter has more rounds per inch than stated, it is simple to add more rounds of MC between the Fair Isle blocks. If you have less rounds per inch, it is a bit more difficult as the hat doesn't have many rounds that can be eliminated. One solution is to enjoy a slightly taller hat (very popular these days) or to consider eliminating the Ribbon Twist Graph to shorten the hat by 7 rounds.

HAT

Using MC, CC1 and the two-colour long tail cast on, cast on 70 (90: 110) sts.
Pm and join to work in the rnd, being careful not to twist sts.

Cast
ON

BRAID

Rnd 1: *K1 MC, k1 CC1; rep from * to end.

Rnd 2: Bring yarns to front of work. *Carry MC over CC1 counter-clockwise and p1 MC, carry CC1 over MC (counter-clockwise) and p1 CC1; rep from * to end.

Rnd 3: *Carry MC under CC1, clockwise and p1 MC, carry CC1 under MC, clockwise, and p1 CC1; rep from * to end.

HAT BODY

Knit 1 (1: 2) rnds in MC.

Next rnd: *K1 MC, k1 CC2; rep from * to end.

Work Rnds 1-7 of Chart 1: Ribbon Twist once, working 10-st repeat 7 (9: 11) times across rnd.

Next rnd: *K1 MC, k1 CC2; rep from * to end.
Knit 1 rnd in MC.

Next rnd: *K1 MC, k1 CC4; rep from * to end.

Toddler and Adult only

Knit 1 rnd in CC4, inc 2 sts evenly across rnd.

Child only

Knit 1 rnd in CC4, dec 2 sts evenly across rnd.

All sizes

72 (88: 112) sts.

Work Rnds 1-14 of Chart 2: Diamond Chart, working 8-st repeat 9 (11: 14) times across rnd.

Next rnd: *K1 MC, k1 CC4; rep from * to end.
Knit 1 rnd in MC.

Next rnd: *K1 MC, k1 CC5; rep from * to end.
Knit 1 rnd in CC5, dec 7 (3: 7) sts evenly across rnd. 65 (85: 105) sts.

Next rnd: With CC5, *k2tog, k9 (13: 17), ssk; rep from * to end. 55 (75: 95) sts.

Work rnds 1- 6 (9: 12) of Chart 3: Snowflake Chart for appropriate size over, working initial 11 (15: 19)-st repeat five times across rnd. 35 (45: 65) sts rem.

Next rnd: K2tog MC, k1 CC5, *k1 MC, k1 CC5; rep from * to end.

Cut all yarns except MC. Cont in MC only.

Next rnd: Knit.

Next rnd: *K2, k2tog; rep from * to last 3 (5: 5) st(s), k1, k2tog 1 (2, 2) time(s). 26 (33: 48) sts rem.

Next rnd: Knit.

Toddler only

Next rnd: (K2tog) around. 13 sts.

Child only

Next rnd: (K1, k2tog) around. 22 sts.

Next rnd: Knit.

Next rnd: (K2tog) around. 11 sts.

Adult only

Next rnd: (K2, k2tog) around. 36 sts.

Next rnd: Knit.

Next rnd: (K1, k2tog) around. 24 sts.

Next rnd: (K2tog) around. 12 sts.

All Sizes

Cut yarn, leaving 30cm/12in tail.

Thread tail on to tapestry needle and draw through rem sts.

Secure with a stitch and weave tail into WS of hat.

Weave in ends. Block gently.

Top with a pompom/tassel or leave it without if preferred.

Line WS with polar fleece, if desired.





CHART 1: RIBBON TWIST

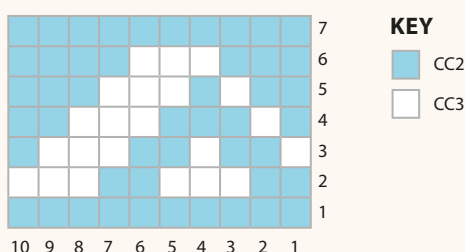


CHART 2: DIAMONDS

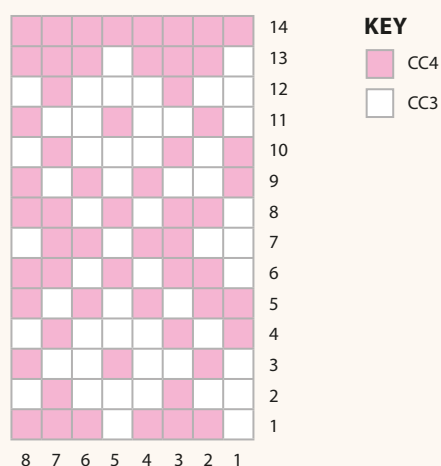
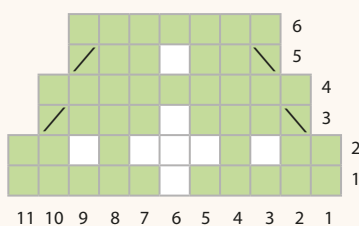
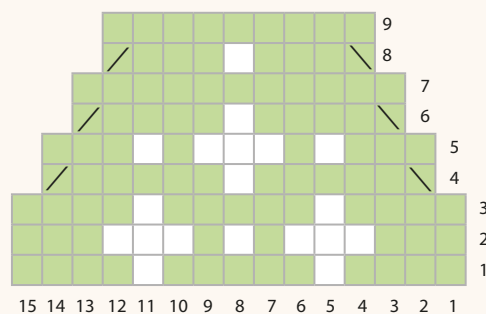


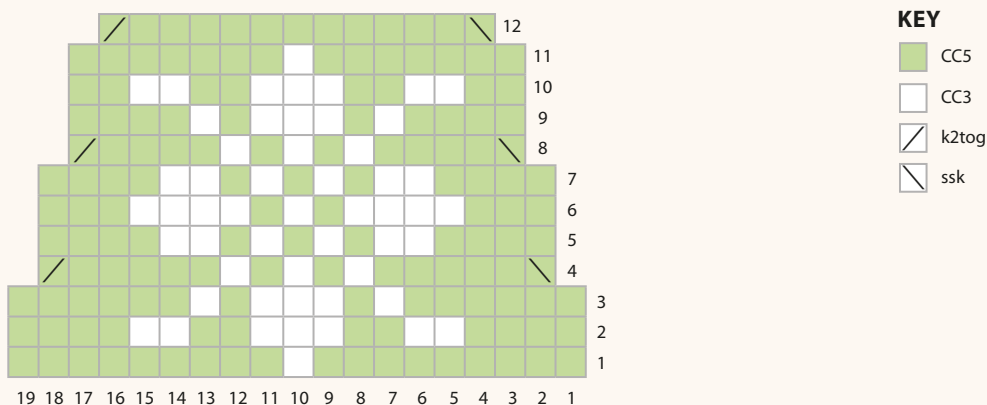
CHART 3: SNOWFLAKE TODDLER



SNOWFLAKE CHILD



SNOWFLAKE ADULT



YARN REVIEW

◆ Lisa says "Cascade is a great basic wool that comes in a wonderful shade palette, making it a 'go to' for colourwork. It is considered a worsted weight but is really on the light side and is interchangeable with many DK weight yarns in patterns. It is the 'not too heavy' quality that keeps colourwork from getting too bulky but also works up very quickly as stitch counts can be lower than much lighter yarns."

YARN ALTERNATIVES

- ◆ **SAVE** King Cole, Merino Blend DK
- ◆ **SPEND** Rowan, Creative Focus Worsted
- ◆ **SPOIL YOURSELF** Quince & Co, Lark