



JÄRBO

92603





## Vintergatan - cap

A simple cap with many fine details. The cap begins with striped ribbing, followed by pattern panels separated by dotted stripes, and is topped with a large, fine pompom!

The wool's natural colors offer a gentle look, but you can, of course, choose completely different colors. Maybe you'd like several different options? This is a project for anyone who wants to try two-color stranded pattern knitting.

### LEVEL OF DIFFICULTY \*\*

**SIZES** Adult S/M (L/XL)

### FINISHED MEASUREMENTS

Head Circumference: approx. 21¼-22 (22¾-23¾) in / 54-56 (58-60) cm

Cap Circumference: approx. 19¾ (21¾) in / 50 (55) cm (before blocking)

Length: approx. 9¾ (9¾) in / 25 (25) cm

**YARN** CYCA #2 (sport), 2 tr ull (2-Ply Wool) (100% wool, 328 yd/300 m / 100 g)

### ALTERNATE YARN SUGGESTIONS

CYCA #2 (sport), Alpaca Solo (2-Ply Wool) (100% alpaca, 183 yd/167 m / 50 g)

CYCA #2 (sport), Elise (60% cotton, 40% acrylic, 184 yd/168 m / 50 g)

CYCA #1 (fingering), Junior (70% acrylic, 30% nylon, 184 yd/168 m / 50 g)

CYCA #2 (sport), Ístex Kambgarn (100% Merino wool, 164 yd/150 m / 50 g)

### YARN COLORS AND AMOUNTS

**Color 1, MC:** Silver Stream 74104: approx. 40 (45) g

**Color 2, CC:** Ash 74108: approx. 20 (25) g

**Color 3, CC:** Almond 74111: approx. 20 (25) g

**NEEDLES** U. S. sizes 2.5 and 4 / 3 and 3.5 mm: 16 in / 40 cm circulars and set of 5 dpn in larger size for crown

### GAUGE

Approx. 24 sts x 31 rnds in pattern on larger size needles = 4 x 4 in / 10 x 10 cm.

Adjust needle sizes to obtain correct gauge if necessary.

### STITCHES AND TECHNIQUES

**Ssk (slip, slip, knit):** One at a time, slip the next 2 sts knitwise, place sts back on left needle and knit together through back loops = left-leaning decrease.

**K2tog:** Knit 2 together = right-leaning decrease.

**Ribbing, in the round:** \*K3, p1\*; rep \* to \* around.

**Stockinette, in the round:** Knit all sts.

**Pattern knitting:** Work in pattern with two-color stranded knitting following the chart.

### CAP

The ribbing begins with a two-color cast-on to create a thin stripe at the lower edge. With U. S. size 2.5 / 3 mm circular and colors 1 and 2: hold both colors together and make a slip knot; place loop on needle. Holding color 2 over your thumb and color 1 over your index finger for long-tail cast-on, CO 112 (120) sts (do not count slip knot). Slide slip knot off needle, join sts to work in the rnd; pm for beginning of rnd.

**Work striped ribbing in the round:** Work 3 rnds ribbing with color 1, 1 rnd with color 2, \*4 rnds with color 1, 1 rnd with color 2\*; rep \* to \* once more. There are now 3 color 1 stripes and 4 thin color 2 stripes. The ribbing should now be approx. 1½ in / 4 cm long. Change to larger size circular. Knit 2 rnds with color 1, increasing 8 (12) sts evenly spaced on 2nd rnd = 120 (132) sts. Continue in charted pattern with color 1 as MC and colors 2 and 3 as CC.

The chart shows 1 repeat which is repeated 10 (11) times per rnd and once in length. Pm at beginning of rnd. On chart row 42, begin decreasing to shape crown. Decrease as indicated on chart, noting that there are two decrease methods used: k2tog and ssk. Change to dpn when sts no longer fit around circular. Decrease until 10 (11) sts rem.

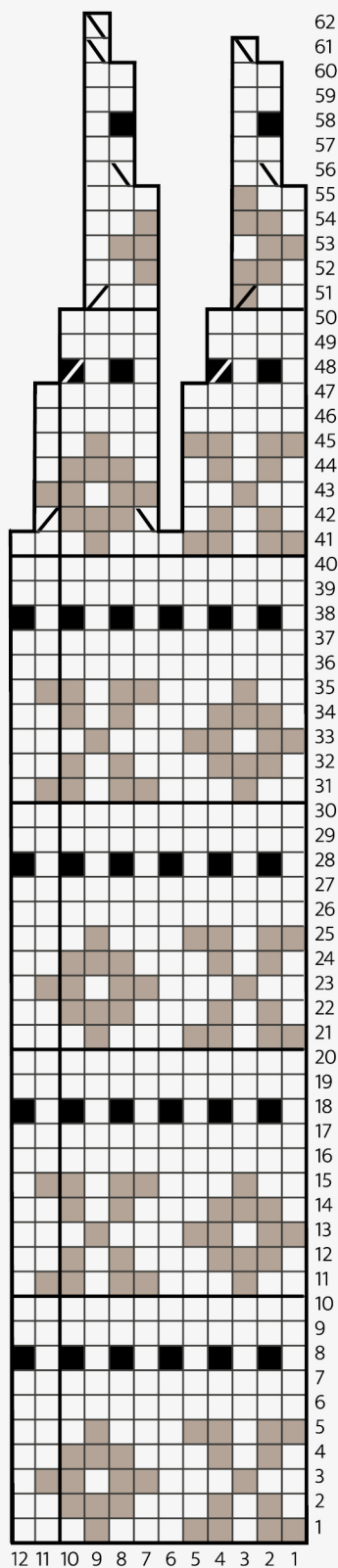
Cur yarn and draw end twice through rem sts for security; tighten. Weave in all ends neatly on WS. With color 2, make a pompom about 4-4¼ in / 10-11 cm in diameter and attach securely to top of cap.

#### **SCHEMATICS**

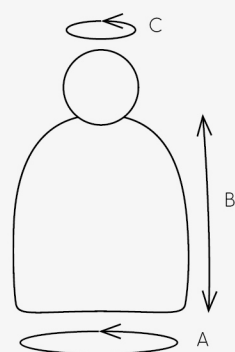
A 19¾ (21¾) in / 50 (55) cm

B 9¾ (9¾) in / 25 (25) cm

C 4-4¼ (4-4¼) in / 10-11 (10-11) cm



- Color 1
- Color 2
- Color 3
- K2tog
- Ssk



A  $\approx$  50 (55) cm  
 B  $\approx$  25 (25) cm  
 C  $\approx$  10-11 (10-11) cm

## Tips & Shortcuts

**To avoid questions:** Before you begin knitting, read through the pattern.

**Stitch count:** Always knit or crochet a gauge swatch as recommended in the pattern. If your stitch count doesn't match the gauge given in the pattern, try again with larger or smaller needles or hook. If your gauge doesn't match that in the pattern, your item will not be the correct size or shape.

**Highlight** the size you will knit or crochet throughout the pattern to make it easier to follow the instructions.

**Charts:** It will be easier to follow a chart if you mark your row with a ruler and magnetic board or sticky note.

**Ease:** The amount of ease included in our garments varies depending on the type and shape of the garment. To determine the right size, we recommend that you first measure your body. Then you can calculate the garment size depending on how much ease you want the garment to have. The schematics for each piece show all the garment measurements.

**Two-color stranded knitting:** When knitting more than 3-4 stitches of the same color, twist the color strands around each other on the wrong side to avoid long strands or "floats" on the back. If the yarns need to be twisted on several rows/rounds, make sure you do not stack the twists in the same place to prevent the yarns from showing through on the right side.

**Yarn alternative:** Please be aware that the gauge (tension), yarn quantity and the shape of the work varies if you use another yarn (even in the same yarn group).

**Tips för hand dyed yarn:** Make sure you have enough yarn to complete your project. The colors may vary from time to time. To get a smooth color mix, you can alternate between two skeins: knit two rows from one and two rows from another skein.

## Abbreviations

### KNITTING

**alt** = alternately, **approx.** = approximately, **beg** = begin, **bl** = back loop, **BO** = bind off, **cc** = contrasting color, **cn** = cable needle, **CO** = cast on, **col** = color, **cont** = continue, **dec** = decrease, **dpn(s)** = double-pointed needles, **EOR** = end of row/round, **fl** = front loop, **g st** = garter stitch, **inc** = increase, **k1f&b** = knit in front and back loop of same stitch, **k** = knit (stitch), **k2tog** = knit two stitches together (right-slanting decrease), **kw** = knitwise, **LH** = left hand needle, **m** = marker, **mm** = millimeters, **mc** = main color, **p** = purl (stitch), **patt** = pattern, **pm** = place marker, **pw** = purlwise, **rep** = repeat, **rnd(s)** = round/rounds, **RH** = right hand needle, **RM** = remove marker, **RS** = right side, **sl** = slip, **sl m** = slip marker, **ssk** = slip, slip, knit, **st(s)** = stitches, **St st** = stockinette/stocking stitch, **tog** = together, **WS** = wrong side, **wyib** = with yarn in back, **wyif** = with yarn in front, **yo** = yarn over

### CROCHETING

**approx.** = approximately, **beg** = begin, **bl** = back loop, **ch** = chain stitch, **col** = color, **cont** = continue, **dc** = double crochet, **dec** = decrease, **dtr** = double treble crochet, **fl** = front loop, **hdc** = half double crochet, **htr** = half treble crochet, **inc** = increase, **m** = marker, **mc** = main color, **rep** = repeat, **rnd/rnds** = round/rounds, **RS** = right side, **sc** = single crochet, **sl st** = slip stitch, **sts** = stitches, **tog** = together, **tr** = treble crochet, **tr tr** = triple treble crochet, **WS** = wrong side, **yo** = yarn over