

# Via con me by Isabell Kraemer



*Via con me* © Isabell Kraemer 2024  
a handknit design by Isabell Kraemer/grasflecken.  
This pattern is for unlimited personal use. Do not reproduce  
or sell the pattern or sell items that are knitted from this pattern.  
For pattern support (in English), please contact  
[grasfleckenbylilalu@gmail.com](mailto:grasfleckenbylilalu@gmail.com)

## Yarn

mYak BABY YAK LACE [383 yds (350m) /50g];  
4 skeins; *shown in color SHINE*

approximately 1532 yds (1400 m) of a lace weight  
yarn (yarn held double)

or approximately 766 yds (700 m) of a heavy  
fingering/sport weight yarn (yarn held single)

## Needles

US 6 (4 mm) circular needle, 40" (100 cm) long or  
size needed to get gauge.

## Gauge

20 sts x 40 rows = 4.75" (12 cm) x 5.5" (14 cm) in  
lace pattern after blocking.

Gauge is not crucial for this project but will affect  
yardage and final size when different.

## Finished measurements

78.75" (200 cm) wingspan, 32.25" (82 cm) deep  
at center.

## Notions

4 stitch markers, tapestry needle, blocking tools.

*Via con me* is a symmetrical triangular shawl,  
worked back and forth from the top down with the  
**yarn held double throughout**. Starting with a  
garter tab cast on, stitches are increased every  
RS row at both edges and at the center of the  
shawl. Instructions for the lace pattern are written  
out (line by line) and charted. The combination of  
the cute and easy lace pattern and the wide  
textured border give this shawl a sophisticated yet  
casual look.

## Modification notes

The shawl can be shortened or lengthened by  
working more or less repeats of the pattern  
repeats. Be aware that the amount of yarn  
needed will change with each alteration.

## Special techniques and tips

### Garter tab cast-on:

<https://www.youtube.com/watch?v=O5X1h7H6frw>

### Long tail cast-on:

<https://www.purlsoho.com/create/long-tail-cast-on/>

### knit 1 under loose strand (k1 uls):

<https://www.purlsoho.com/create/knit-1-under-loose-strand-k1-uls/>

## Stitches

**Lace pattern (worked over a multiple of 10 + 1  
sts)**

To check gauge, cast on 31 stitches.

**Preparation row (WS):** Purl to end.

**Row 1 (RS):** P1, (k2tog, k2, yo, k1, yo, k2, ssk,  
p1) to end.

**Row 2 (WS):** (K1, p9) to last stitch, k1.

**Row 3 (RS):** P1, (k2tog, k1, yo, k3, yo, k1, ssk,  
p1) to end.

**Row 4 (WS):** Repeat row 2.

**Row 5 (RS):** P1, (k2tog, yo, k5, yo, ssk, p1) to  
end.

**Row 6 (WS):** Repeat row 2.

**Row 7 (RS):** P1, (k2, yo, ssk, k1, k2tog, yo, k2,  
p1) to end.

**Row 8 (WS):** Repeat row 2.

**Row 9 (RS):** P1, (k3, yo, SK2P, yo, k3, p1) to  
end.

**Row 10 (WS):** Repeat row 2.

**Row 11 (RS):** K1, (yo, k2, ssk, p1, k2tog, k2, yo,  
k1) to end.

**Row 12 (WS):** (P5, k1, p4) to last stitch, p1.

**Row 13 (RS):** K1, (k1, yo, k1, ssk, p1, k2tog, k1,  
yo, k2) to end.

**Row 14 (WS):** Repeat row 12.

**Row 15 (RS):** K1, (k2, yo, ssk, p1, k2tog, yo, k3)  
to end.

**Row 16 (WS):** Repeat row 12.

**Row 17 (RS):** K1, (k2tog, yo, k2, p1, k2, yo, ssk,  
k1) to end.

**Row 18 (WS):** Repeat row 12.

**Row 19 (RS):** K2tog, (yo, k3, p1, k3, yo, SK2P) to  
9 sts before end, yo, k3, p1, k3, yo, ssk.

**Row 20 (WS):** Repeat row 12.

Repeat **rows 1 to 20** for pattern at least 2 more  
times.

### MB (worked back and forth)

**Row 1 (RS):** (K1, p1, k1) into next stitch (= 3 sts  
made in 1 stitch), turn.

**Row 2 (WS):** P3, turn.

**Row 3 (RS):** SK2P.

### k1 uls:

Insert RH needle under loose strand, from front to  
back and into next stitch knitwise. Knit stitch  
catching the loose strand and bring new stitch out  
from under the strand.

## Abbreviations

**CO:** cast on

**k:** knit

**k1 uls:** see Stitches (page 2)

**k2tog:** knit two stitches together (right leaning decrease)

**m:** marker

**M1L:** make one left (left leaning inc)

lift loop between stitches from front, knit into back loop

**M1R:** make one right (right leaning inc)

lift loop between stitches from back, knit into front loop

**MB:** make bobble (see Stitches on page 2)

**p:** purl

**pm:** place marker

**pu1:** pick up and knit 1 stitch

**RS:** right side

**SK2P:** slip 1 stitch knitwise from LH to RH needle, k2tog, pass slipped stitch over (double decrease)

**sl3 wyif:** slip 3 stitches purlwise from LH to RH needle, with yarn held in front.

**sl5 wyif:** slip 5 stitches purlwise from LH to RH needle, with yarn held in front.

**sl m:** slip marker

**ssk:** slip 2 stitches, one at a time, knitwise to the RH needle; return stitches to the LH needle in turned position and knit them together through the back loops (left leaning decrease)

**st(s):** stitch(es)

**WS:** wrong side

**yo:** yarn over

**():** repeat instructions in brackets

## Instructions

### Garter tab cast-on

With yarn held double and US 6 (4 mm) needle, CO 3 sts using the longtail cast-on.

**First row (RS):** Knit.

Work 5 more rows in garter stitch (knit on RS and WS rows).

**Next row (RS):** K3, DO NOT TURN, **pm**, yo, *pick up and knit stitches from the long edge (1 stitch per garter ridge) as follows:*

pu1, yo, **pm**, pu1, **pm**, yo, pu1, yo, **pm**, pick up 3 sts from CO edge. – 13 sts

**Next row (WS):** K3, sl m, purl to last m, sl m, k3

Lace pattern set up

Please follow line by line instructions below or work from chart (see page 7).

**Row 1 (RS):** K3, sl m, yo, k1, p1, k1, M1R, sl m, k1, sl m, M1L, k1, p1, k1, yo, sl m, k3. – 17 sts

**Row 2 (WS):** K3, sl m, p2, k1, p2, sl m, p1, sl m, p2, k1, p2, sl m, k3.

**Row 3 (RS):** K3, sl m, yo, k2, p1, k2, M1R, sl m, k1, sl m, M1L, k2, p1, k2, yo, sl m, k3. – 21 sts

**Row 4 (WS):** K3, sl m, p3, k1, p3, sl m, p1, sl m, p3, k1, p3, sl m, k3.

**Row 5 (RS):** K3, sl m, yo, k3, p1, k3, M1R, sl m, k1, sl m, M1L, k3, p1, k3, yo, sl m, k3. – 25 sts

**Row 6 (WS):** K3, sl m, p4, k1, p4, sl m, p1, sl m, p4, k1, p4, sl m, k3.

**Row 7 (RS):** K3, sl m, yo, k2tog, k2, yo, k1, yo, k2, ssk, yo, sl m, k1, sl m, yo, k2tog, k2, yo, k1, yo, k2, ssk, yo, sl m, k3. – 29 sts

**Row 8 (WS):** K3, sl m, k1, p9, k1, sl m, p1, sl m, k1, p9, k1, sl m, k3.

**Row 9 (RS):** K3, sl m, yo, p1, k2tog, k1, yo, k3, yo, k1, ssk, p1, M1R, sl m, k1, sl m, M1L, p1, k2tog, k1, yo, k3, yo, k1, ssk, p1, yo, sl m, k3 – 33 sts

**Row 10 (WS):** K3, sl m, p1, k1, p9, k1, p1, sl m, p1, sl m, p1, k1, p9, k1, p1, sl m, k3.





**Row 11 (RS):** K3, sl m, yo, k1, p1, k2tog, yo, k5, yo, ssk, p1, k1, M1R, sl m, k1, sl m, M1L, k1, p1, k2tog, yo, k5, yo, ssk, p1, k1, yo, sl m, k3. – 37 sts

**Row 12 (WS):** K3, sl m, p2, k1, p9, k1, p2, sl m, p1, sl m, p2, k1, p9, k1, p2, sl m, k3.

**Row 13 (RS):** K3, sl m, yo, k2, p1, k2, yo, ssk, k1, k2tog, yo, k2, p1, k2, M1R, sl m, k1, sl m, M1L, k2, p1, k2, yo, ssk, k1, k2tog, yo, k2, p1, k2, yo, sl m, k3. – 41 sts

**Row 14 (WS):** K3, sl m, p3, k1, p9, k1, p3, sl m, p1, sl m, p3, k1, p9, k1, p3, sl m, k3.

**Row 15 (RS):** K3, sl m, yo, k3, p1, k3, yo, SK2P, yo, k3, p1, k3, M1R, sl m, k1, sl m, M1L, k3, p1, k3, yo, SK2P, yo, k3, p1, k3, yo, sl m, k3. – 45 sts

**Row 16 (WS):** K3, sl m, p4, k1, p9, k1, p4, sl m, p1, sl m, p4, k1, p9, k1, p4, sl m, k3.

Lace pattern

Please follow line by line instructions below or work from chart (see page 7).

**Row 1 (RS):** K3, sl m, yo, (k2tog, k2, yo, k1, yo, k2, ssk, p1) to 9 sts before m, k2tog, k2, yo, k1, yo, k2, ssk, yo, sl m, k1, sl m, yo, k2tog, k2, yo, k1, yo, k2, ssk, (p1, k2tog, k2, yo, k1, yo, k2, ssk) to m, yo, sl m, k3. – 49 sts

**Row 2 (WS):** K3, sl m, k1, (p9, k1) to m, sl m, p1, sl m, (k1, p9) to 1 stitch before m, k1, sl m, k3.

**Row 3 (RS):** K3, sl m, yo, p1, (k2tog, k1, yo, k3, yo, k1, ssk, p1) to m, M1R, sl m, k1, sl m, M1L, (p1, k2tog, k1, yo, k3, yo, k1, ssk) to 1 stitch before m, p1, yo, sl m, k3. – 53 sts

**Row 4 (WS):** K3, sl m, p1, k1, (p9, k1) to 1 stitch before m, p1, sl m, p1, sl m, p1, (k1, p9) to 2 sts before m, k1, p1, sl m, k3.

**Row 5 (RS):** K3, sl m, yo, k1, p1, (k2tog, yo, k5, yo, ssk, p1) to 1 stitch before m, k1, M1R, sl m, k1, sl m, M1L, k1, (p1, k2tog, yo, k5, yo, ssk) to 2 sts before m, p1, k1, yo, sl m, k3. – 57 sts

**Row 6 (WS):** K3, sl m, p2, k1, (p9, k1) to 2 sts before m, p2, sl m, p1, sl m, p2, (k1, p9) to 3 sts before m, k1, p2, sl m, k3.

**Row 7 (RS):** K3, sl m, yo, k2, p1, (k2, yo, ssk, k1, k2tog, yo, k2, p1) to 2 stitches before m, k2, M1R, sl m, k1, sl m, M1L, k2, (p1, k2, yo, ssk, k1, k2tog, yo, k2) to 3 sts before m, p1, k2, yo, sl m, k3. – 61 sts

**Row 8 (WS):** K3, sl m, p3, k1, (p9, k1) to 3 sts before m, p3, sl m, p1, sl m, p3, (k1, p9) to 4 sts before m, k1, p3, sl m, k3.

**Row 9 (RS):** K3, sl m, yo, k3, p1, (k3, yo, SK2P, yo, k3, p1) to 3 sts before m, k3, M1R, sl m, k1, sl m, M1L, k3, (p1, k3, yo, SK2P, yo, k3) to 4 sts before m, p1, k3, yo, sl m, k3. – 65 sts

**Row 10 (WS):** K3, sl m, p4, k1, (p9, k1) to 4 sts before m, p4, sl m, p1, sl m, p4, (k1, p9) to 5 sts before m, k1, p4, sl m, k3.

Repeat rows 1 - 10 for lace pattern 11 more times. – 285 sts

*The following 6 rows will be slightly different (WS rows only) to create a smooth transition into the next part.*

**Next row (RS):** Repeat row 1. – 289 sts

**Next row (WS):** K3, sl m, k1, (p3, k3, p3, k1) to m, sl m, p1, sl m, (k1, p3, k3, p3) to 1 stitch before m, k1, sl m, k3.

**Next row (RS):** Repeat row 3. – 293 sts

**Next row (WS):** K3, sl m, p1, k1, (p2, k5, p2, k1) to 1 stitch before m, p1, sl m, p1, sl m, p1, (k1, p2, k5, p2) to 2 sts before m, k1, p1, sl m, k3.

**Next row (RS):** Repeat row 5. – 297 sts

**Next row (WS):** K3, sl m, k1, p1, k1, (p1, k7, p1, k1) to 2 sts before m, p1, k1, sl m, p1, sl m, k1, p1, (k1, p1, k7, p1) to 3 sts before m, k1, p1, k1, sl m, k3.

Texture pattern band (Border)

**Row 1 (RS):** K3, sl m, yo, knit to m, M1R, sl m, k1, sl m, M1L, knit to m, yo, sl m, k3. – 301 sts

**Row 2 (WS):** K3, sl m, knit to m, sl m, p1, sl m, knit to m, sl m, k3.

**Row 3 (RS):** K3, sl m, yo, knit to m, M1R, sl m, k1, sl m, M1L, knit to m, yo, sl m, k3. – 305 sts

**Row 4 (WS):** K3, sl m, purl to m, sl m, p1, sl m, purl to m, sl m, k3.

**Row 5 (RS):** K3, sl m, yo, knit to m, M1R, sl m, k1, sl m, M1L, knit to m, yo, sl m, k3. – 309 sts

**Row 6 (WS):** K3, sl m, knit to m, sl m, p1, sl m, knit to m, sl m, k3.

*Note: It is possible to omit the bobbles by working a repeat of row 1 instead of following the instructions of row 7.*

**Row 7 (RS):** K3, sl m, yo, k5, MB, (k9, MB) to 5 sts before m, k5, M1R, sl m, k1, sl m, M1L, k5, MB, (k9, MB) to 5 sts before m, k5, yo, sl m, k3. – 313 sts

**Row 8 (WS):** K3, sl m, purl to m, sl m, p1, sl m, purl to m, sl m, k3.

**Row 9 (RS):** K3, sl m, yo, knit to m, M1R, sl m, k1, sl m, M1L, knit to m, yo, sl m, k3. – 317 sts

**Row 10 (WS):** K3, sl m, knit to m, sl m, p1, sl m, knit to m, sl m, k3.

**Row 11 (RS):** K3, sl m, yo, knit to m, M1R, sl m, k1, sl m, M1L, knit to m, yo, sl m, k3. – 321 sts

**Row 12 (WS):** K3, sl m, k1, p5, (k2, p1, k2, p5) to 1 stitch before m, k1, sl m, p1, sl m, k1, p5, (k2, p1, k2, p5) to 1 stitch before m, k1, sl m, k3.

**Row 13 (RS):** K3, sl m, yo, k1, sl5 wyif, (k5, sl5 wyif) to 1 stitch before m, k1, M1R, sl m, k1, sl m, M1L, k1, sl5 wyif, (k5, sl5 wyif) to 1 stitch before m, k1, yo, sl m, k3. – 325 sts

**Row 14 (WS):** K3, sl m, k2, p5, (k2, p1, k2, p5) to 2 sts before m, k2, sl m, p1, sl m, k2, p5, (k2, p1, k2, p5) to 2 sts before m, k2, sl m, k3.

**Row 15 (RS):** K3, sl m, yo, k4, k1 uls, (k9, k1 uls) to 4 sts before m, k4, M1R, sl m, k1, sl m, M1L, k4, k1 uls, (k9, k1 uls) to 4 sts before m, k4, yo, sl m, k3. – 329 sts

**Row 16 (WS):** K3, sl m, p1, k2, p5, (k2, p1, k2, p5) to 3 sts before m, k2, p1, sl m, p1, sl m, p1, k2, p5, (k2, p1, k2, p5) to 3 sts before m, k2, p1, sl m, k3.

**Row 17 (RS):** K3, sl m, yo, k3, sl5 wyif, (k5, sl5 wyif) to 3 sts before m, k3, M1R, sl m, k1, sl m, M1L, k3, sl5 wyif, (k5, sl5 wyif) to 3 sts before m, k3, yo, sl m, k3. – 333 sts

**Row 18 (WS):** K3, sl m, k1, p1, k2, p5, (k2, p1, k2, p5) to 4 sts before m, k2, p1, k1, sl m, p1, sl m, k1, p1, k2, p5, (k2, p1, k2, p5) to 4 sts before m, k2, p1, k1, sl m, k3.

**Row 19 (RS):** K3, sl m, yo, k6, k1 uls, (k9, k1 uls) to 6 sts before m, k6, M1R, sl m, k1, sl m, M1L, k6, k1 uls, (k9, k1 uls) to 6 sts before m, k6, yo, sl m, k3. – 337 sts

**Row 20 (WS):** K3, sl m, (k2, p1, k2, p5) to 5 sts before m, k2, p1, k2, sl m, p1, sl m, (k2, p1, k2, p5) to 5 sts before m, k2, p1, k2, sl m, k3.

**Row 21 (RS):** K3, sl m, yo, (k5, sl5 wyif) to 5 sts before m, k5, M1R, sl m, k1, sl m, M1L, (k5, sl5 wyif) to 5 sts before m, k5, yo, sl m, k3. – 341 sts

**Row 22 (WS):** K3, sl m, p1, (k2, p1, k2, p5) to 6 sts before m, k2, p1, k2, p1, sl m, p1, sl m, p1, (k2, p1, k2, p5) to 6 sts before m, k2, p1, k2, p1, sl m, k3.

**Row 23 (RS):** K3, sl m, yo, k8, k1 uls, (k9, k1 uls) to 8 sts before m, k8, M1R, sl m, k1, sl m, M1L, k8, k1 uls, (k9, k1 uls) to 8 sts before m, k8, yo, sl m, k3. – 345 sts

**Row 24 (WS):** K3, sl m, p2, (k2, p1, k2, p5) to 7 sts before m, k2, p1, k2, p2, sl m, p1, sl m, p2, (k2, p1, k2, p5) to 7 sts before m, k2, p1, k2, p2, sl m, k3.

**Row 25 (RS):** K3, sl m, yo, k7, sl5 wyif, (k5, sl5 wyif) to 7 sts before m, k7, M1R, sl m, k1, sl m, M1L, k7, sl5 wyif, (k5, sl5 wyif) to 7 sts before m, k7, yo, sl m, k3. – 349 sts

**Row 26 (WS):** K3, sl m, p3, (k2, p1, k2, p5) to 8 sts before m, k2, p1, k2, p3, sl m, p1, sl m, p3, (k2, p1, k2, p5) to 8 sts before m, k2, p1, k2, p3, sl m, k3.

**Row 27 (RS):** K3, sl m, yo, k10, k1 uls, (k9, k1 uls) to 10 sts before m, k10, M1R, sl m, k1, sl m, M1L, k10, k1 uls, (k9, k1 uls) to 10 sts before m, k10, yo, sl m, k3. – 353 sts

**Row 28 (WS):** K3, sl m, p4, (k2, p1, k2, p5) to 9 sts before m, k2, p1, k2, p4, sl m, p1, sl m, p4, (k2, p1, k2, p5) to 9 sts before m, k2, p1, k2, p4, sl m, k3.

**Row 29 (RS):** K3, sl m, yo, k1, sl3 wyif, (k5, sl5 wyif) to 9 sts before m, k5, sl3 wyif, k1, M1R, sl m, k1, sl m, M1L, k1, sl3 wyif, (k5, sl5 wyif) to 9 sts before m, k5, sl3 wyif, k1, yo, sl m, k3. – 357 sts

**Row 30 (WS):** K3, sl m, p5, (k2, p1, k2, p5) to m, sl m, p1, sl m, p5, (k2, p1, k2, p5) to m, sl m, k3.

**Row 31 (RS):** K3, sl m, yo, k2, k1 uls, (k9, k1 uls) to 2 sts before m, k2, M1R, sl m, k1, sl m, M1L, k2, k1 uls, (k9, k1 uls) to 2 sts before m, k2, yo, sl m, k3. – 361 sts

**Row 32 (WS):** K3, sl m, k1, p5, (k2, p1, k2, p5) to 1 stitch before m, k1, sl m, p1, sl m, k1, p5, (k2, p1, k2, p5) to 1 stitch before m, k1, sl m, k3.

*Note: In case you are running short on yarn, it is possible to omit rows 33 to 40, or repeat rows 13 to 16 only. The following stitch counts would be off by 16 sts (respectively 8 sts).*

**Rows 33 to 40:** Repeat rows 13 to 20. – 377 sts

**Row 41 (RS):** K3, sl m, yo, knit to m, M1R, sl m, k1, sl m, M1L, knit to m, yo, sl m, k3. – 381 sts

**Row 42 (WS):** K3, sl m, knit to m, sl m, p1, sl m, knit to m, sl m, k3.

**Row 43 (RS):** Repeat row 41. – 385 sts

**Row 44 (WS):** K3, sl m, purl to m, sl m, p1, sl m, purl to m, sl m, k3.

**Row 45 to 48:** Repeat rows 41 to 44. – 393 sts

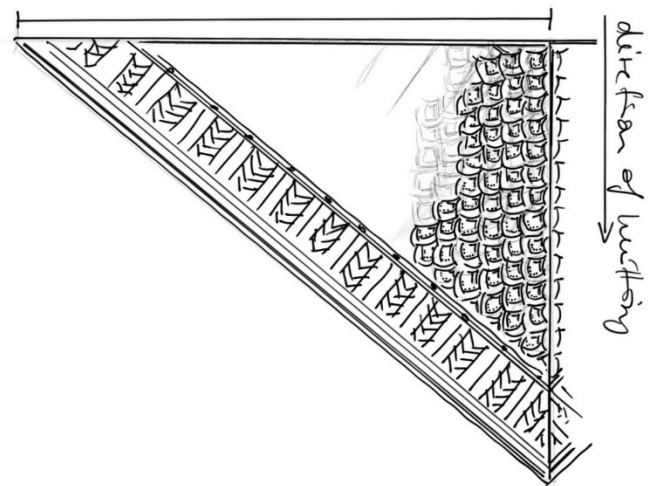
**Rows 49 to 54:** Repeat rows 41 and 42 a total of 3 times. – 405 sts

Loosely bind off all stitches knitwise.

#### Finishing

Weave in ends and wet block, slightly stretching to even out stitches.

Schematic



Schematic shows half of the wingspan.

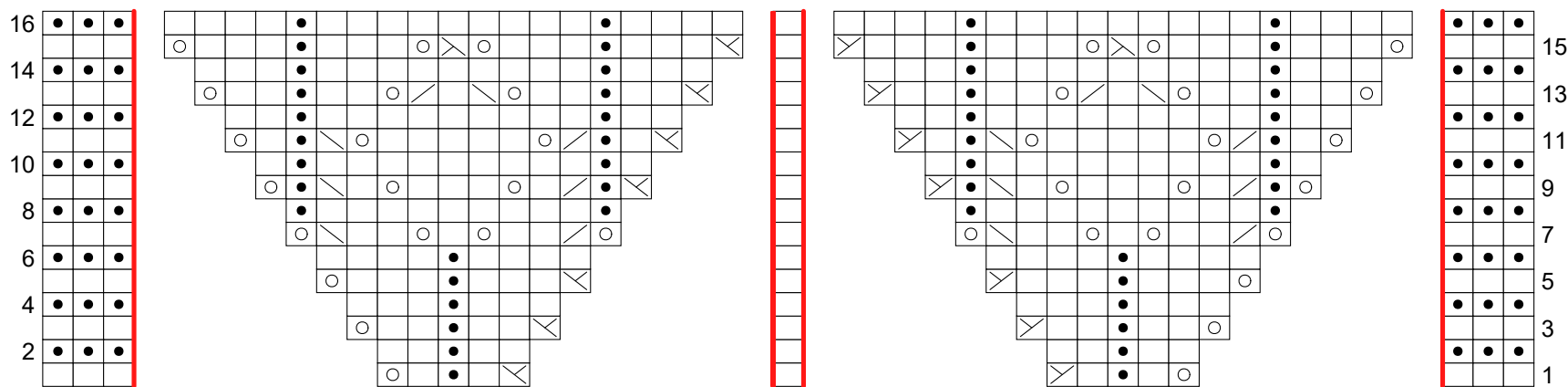
**Wingspan:** approximately 77.25" (196 cm)

**Height (at center):** approximately 30" (76 cm)



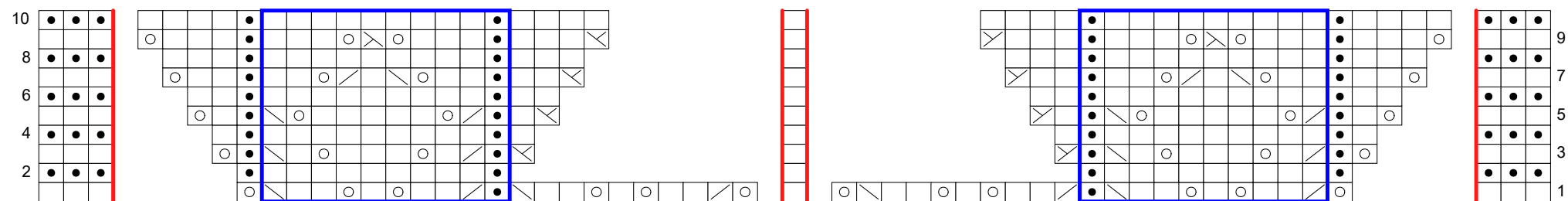
## Lace pattern set up chart

Chart is to be read from bottom to top. RS rows from right to left, WS rows from left to right. Work **rows 1 to 16** once



## Lace pattern chart

Chart is to be read from bottom to top. RS rows from right to left, WS rows from left to right. Repeat **rows 1 to 10** for pattern.



- RS: k; WS: p
- RS: p; WS: k
- yo
- / M1R
- \ M1L
- / k2tog
- \ ssk
- X SK2P
- marker
- repeat