



# Vaasetter

## Beret and Mitts

A clever use of reverse colouring adds extra impact to this traditional motif inspired hat and mitts set as well as being an economical use of yarns



**DESIGNER**  
**Elizabeth Lovick**

Liz lives and works on the small Orkney island of Flotta. She has been knitting and designing since she was small, and enjoys bringing

traditional stitches to modern knitters. Her website is [www.northernlace.co.uk](http://www.northernlace.co.uk), and she sells her patterns on Etsy and Ravelry where she is **northernlace**.

“When J&S brought out their new Heritage yarn with colours taken from old Fair Isle knitwear, I took out my photos of items in the small museum on the island to see which motifs were used most on the old items. As ‘berrets’ have long been worn in Shetland, this was an obvious project. By swapping the colours in the mitts, there is less yarn left over.”

### DIFFICULTY ADVANCED

#### SKILLS USED

- Increasing & decreasing
- Colourwork (stranded)
- Knitting in the round
- Working from a chart

#### YARN USED

**Jamieson & Smith, Heritage**

- 100% Shetland Wool
- 25g/110m/120yd
- MC: Flugga White, 2 balls
- CC1: Berry Wine, 1 ball
- CC2: Madder, 1 ball

#### FINISHED

#### MEASUREMENTS

##### Beret

- **Brim circumference:** 55cm/21¾cm
- **Circumference at widest point:** 81.5cm/32in
- **Diameter:** 25cm/10in

##### Mittens

- **Palm circumference (unstretched):** 19cm/7½in

#### ■ Cuff length:

6.5cm/2½in

- **Total length (with round edges rolled):** 18cm/7in

#### TENSION

- Work 30 sts and 32 rows in colourwork pattern to measure 10x10cm/4x4in using 3mm (US 2½) needles, or size required to obtain tension

#### NOTIONS

- 3mm (US 2½) circular needle, 50cm/20in long (or 80cm/32in long or longer for Magic Loop)
- 3mm (US 2½) DPNs (optional)
- One stitch marker (optional)
- Row counter (optional)
- Waste yarn
- Tapestry needle

### PATTERN NOTES

All charts are worked in stocking stitch, using colours as designated.

Begin working the beret with shorter circular needle, changing to DPNs when the crown becomes too small to comfortably fit on the needles. Alternatively, use a longer circular needle and Magic Loop method throughout.

Work mitts on long circular (Magic Loop) or DPNs.

In the beret, increases and decreases occur on plain rounds between the pattern bands. In the mitts, there are small changes in stitch numbers to accommodate the different stitch repeats. These also occur on plain rounds between the pattern bands.

### BERET

With MC, cast on 164 sts.

Join to work in the round, being careful not to twist sts, and pm for beg of rnd.

Knit 10 rounds.

Work Rows 1-10 of Rib Chart once, working 4-st repeat 41 times across rnd.

**Next rnd:** With MC only, (k2tog) twice, knit to end of rnd. 162 sts

**Inc rnd 1:** With MC only, \*kfb, k3, kfb, k4; rep from \* to end of rnd. 198 sts





BERET CHARTS

CHART A

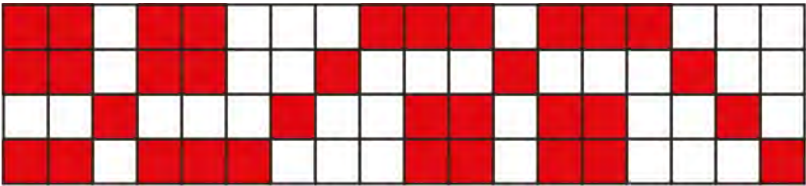


CHART B



KEY

- Berry Wine
- Madder
- Flugga White

CHART C

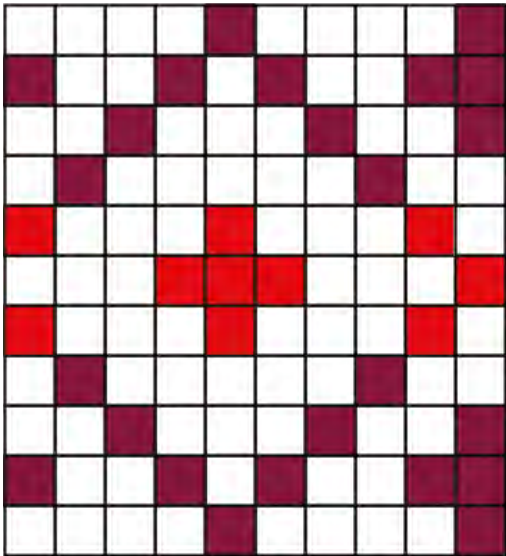


CHART D

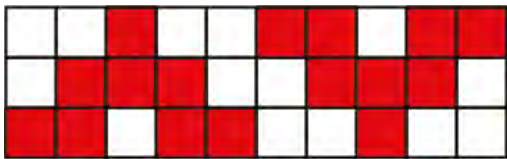


CHART E

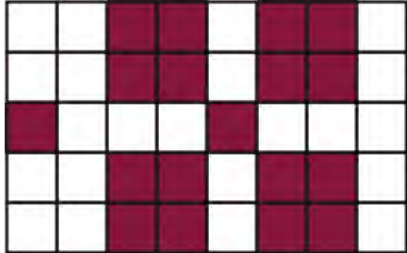


CHART F

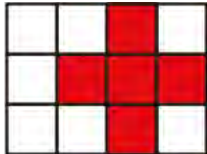


CHART G



## YARN REVIEW

Liz says

"The new Heritage yarn was developed to give the same colours and feel as the old Shetland hand-spun yarns. It is much softer than other Shetland yarns – no scratching here! – and the vivid colours are ideal for Fair Isle stranded work."

## YARN ALTERNATIVES

- ◆ **SAVE**  
Patons, Diploma Gold 4ply
- ◆ **SPEND**  
Regia, 4ply Solid
- ◆ **SPOIL YOURSELF**  
Rowan, Cashsoft 4ply

Work Rnds 1-4 of Beret Chart A once, working 18-st repeat 11 times across rnd.

**Next rnd:** With MC only, (kfb) twice, knit to end of rnd. 200 sts

**Inc rnd 2:** With MC only, \*kfb, k4; rep from \* to end of rnd. 240 sts

Work Rnds 1-15 of Beret Chart B once, working 4-st repeat 60 times across rnd.

With MC only, knit 1 rnd.

**Dec rnd 1:** With MC only, (k2tog, k1) four times, (k2tog, k4) 38 times. 198 sts

Work Rnds 1-4 of Beret Chart A once, working 18-st repeat 11 times across rnd.

**Next rnd:** With MC only, (kfb) twice, knit to end of rnd. 200 sts

**Dec rnd 2:** With MC only, \*k2tog, k3; rep from \* to end of rnd. 160 sts

Work Rnds 1-11 of Beret Chart C once, working 10-st repeat 16 times across rnd.

Knit 1 rnd in MC.

**Dec Rnd 3:** With MC only, \*k2tog, k2; rep from \* to end of rnd. 120 sts

Work Rnds 1-3 of Beret Chart D once, working 10-st repeat 12 times across rnd.

Knit 1 rnd in MC.

**Dec rnd 4:** With MC only, \*k2tog, k1; rep from \* to end of rnd. 80 sts

Work Rnds 1-5 of Beret Chart E once, working 8-st repeat 10 times across rnd.

Knit 1 rnd in MC.

**Dec rnd 5:** With MC only, (k2tog) to end of round. 40 sts

Work Rnds 1-3 of Beret Chart F once, working 4-st repeat 10 times across rnd.

Knit 1 rnd in MC.

Rep Dec Rnd 5 once more. 20 sts

Work Rnds 1-2 of Beret Chart G once, working 2-st repeat 10 times across rnd.

Rep Dec Rnd 5 once more. 10 sts

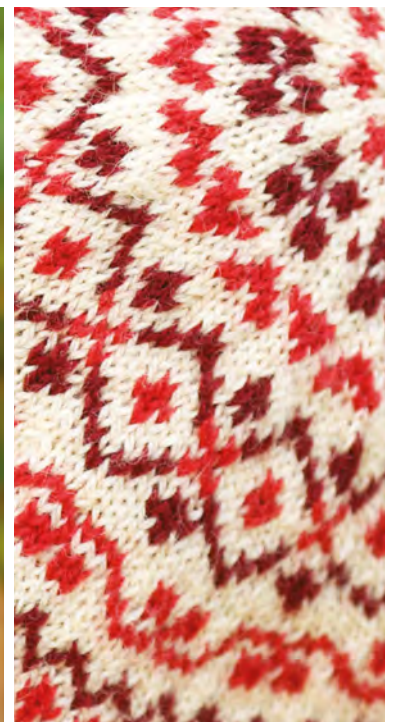
Break yarn and draw through remaining sts, pulling tight. Secure yarn on WS.

## FINISHING

Weave in all ends, then wash.

Place the beret over a dinner plate to dry, making sure that the centre of the beret is in the centre of the plate and that the rim is under the centre of Chart B.

Cast  
**OFF**





MITT CHARTS

CHART A

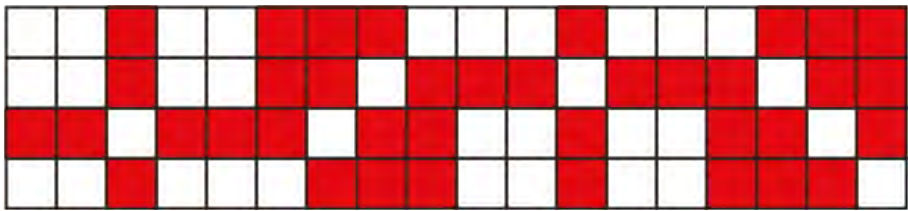
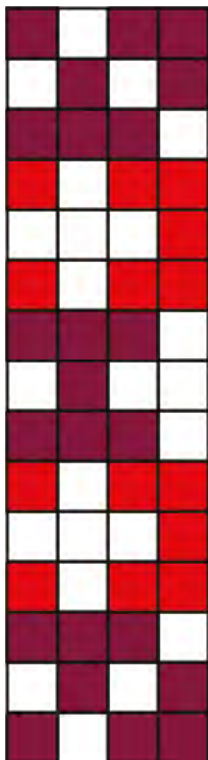


CHART B



RIB CHART

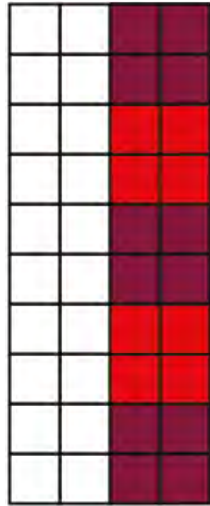


CHART C

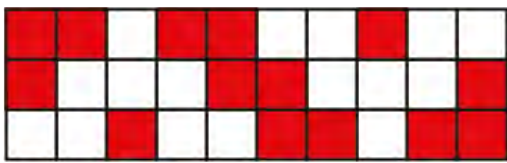
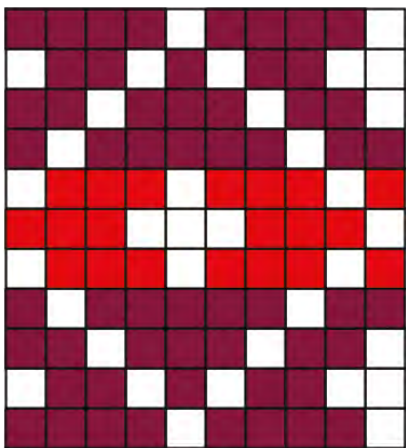


CHART D



## FIRST MITT

### Cuff

With CC1 and long circular or DPNs, cast on 48 sts.

Join to work in the round, being careful not to twist sts, and pm for beg of rnd.

Knit 10 rounds.

Work Rows 1-10 of Rib Chart once, working 4-st repeat 12 times across rnd.

### Shape Hand

**Rnd 1:** With CC1, \*k1, m1, k7; rep from \* to end of rnd. 54 sts.

**Rnd 2:** With CC2, knit.

**Rnds 3-6:** Work Rnds 1-4 of Mitt Chart A, working 18-st repeat three times across rnd.

**Rnd 7:** With CC2, knit.

**Rnd 8:** With CC1, (k20, m1) twice, knit to end of rnd. 56 sts.

**Rnds 9-23:** Work Rnds 1-15 of Mitt Chart B, working 4-st repeat 14 times across rnd.

**Rnd 24:** With CC1, knit.

**Rnd 25:** With CC2, \*k2, m1, k12; rep from \* to end of rnd. 60 sts.

**Rnds 26-28:** Work Rnds 1-3 of Mitt Chart C, working 10-st repeat six times across rnd.

**Rnd 29:** With CC2, knit.

**Rnd 30:** With CC1, k3; with waste yarn k9. Now return these 9 sts to the LH needle and knit them again with CC1. With CC1, knit to end of rnd.

**Rnds 31-41:** Work Rnds 1-11 of Mitt Chart D, working 10-st repeat six times across rnd.

Cast  
ON

**Rnd 42:** With CC1, knit.

**Rnds 43-52:** With CC2, knit.

Cast off.

### Thumb

Return to the 9 sts in waste yarn.

Unpick the waste yarn and place the 9 sts below on to one needle and the 9 sts from the top side on another needle.

Join CC2 and knit across first 9 sts, pick up and knit 1 st in the gap between sides of thumb, knit across next 9 sts, pick up and knit 1 st from other side of thumb.

Join to work in the round. 20 sts.

Knit 8 more rnds.

Cast off.

## SECOND MITT

Work as for First Mitt to Rnd 29.

**Rnd 30:** With CC1, k18; with waste yarn k9. Now return these 9 sts to the LH needle and knit them again with CC1. With CC1, knit to end of rnd. Continue as for First Mitt from Rnd 31 to end.

## FINISHING

Weave in all ends, then wash.

Pull into shape and dry flat.

Cast  
OFF

