

Scheepjes
YARN
THE AFTER PARTY

EMERALD
SHAWL

by Bernadette Ambergen



EMERALD SHAWL

By Bernadette Ambergen

You will need

- Scheepjes Alpaca Rhythm (80% Alpaca, 20% extra fine wool, 25g/200m) 5 balls of 658
- A 3.5mm (US E/4) hook
- Stitch markers

Tension

22 sts and 11 rows to measure 10x10cm over treble crochet using a 3.5mm hook or size needed to obtain correct tension.

Measurements

170x55cm after blocking

Abbreviations (UK terms used throughout)

beg beginning

ch chain

ch-sp(s) chain space(s)

ch-2 sp shows the number of chain in the chain space; in this case there are 2 chain.

dc double crochet

htr half treble crochet

RS Right Side

ss slip stitch

st(s) stitch(es)

tr treble crochet

ttr triple treble crochet

tr3tog work 3 tr together as a decrease:

(Yrh, insert hook in next stitch, yrh and pull up loop, yrh and draw through 2 loops) 3 times, yrh and draw through all loops on hook.

tr5tog As tr3tog, working () 5 times.

WS Wrong Side

yrh yarn round hook

() repeat the instruction inside the brackets the number of times stated. This is also used where a number of sts are all to be worked within a certain stitch or space, eg (tr, ch2, tr) in next ch-sp.

[] Square brackets contain the stitch count at the end of the row.

***...; rep from * x more times** Repeat the instructions between the asterisk and semi-colon the number of times stated.

Special Abbreviations

Increase Cluster (inc cl) Worked over next 3 tr: tr in first tr, 5tr in next tr, (tr, ch1) in next tr

Decrease Cluster (dec cl) Always worked over Increase Cluster sts of previous row: tr in first tr of inc cl, ch1, tr5tog over next 5 tr, ch1, (tr, ch1) in last tr of inc cl

Picot Ch3, ss to first of these ch

Notes

The Spiral Circles are made first and are joined as you work in the final round. Three Large Triangles are made and joined to the Spiral Circles on the last row. These are followed by 2 Small Triangles, also joined to the Spiral Circles on the last row. Finally the yarn is rejoined to work an edging along the two short sides. For an overview of the construction see Chart I.

Pattern

Spiral Circles (make 13)

See Chart A

Keep working in a spiral without closing off each round with a slip stitch.

Ch6, to first ch to join into a ring.

Round 1 (RS) Ch1 (does not count as st), (dc into ring, ch3) 11 times, dc into ring, ch1, htr into first dc to join (counts as ch-3 sp). [12 ch-sps]

Round 2 Ch5 (counts as tr and ch2), (tr in next ch-3 sp, ch2) 11 times.

Round 3 2tr in third ch of beg ch-5, ch2,

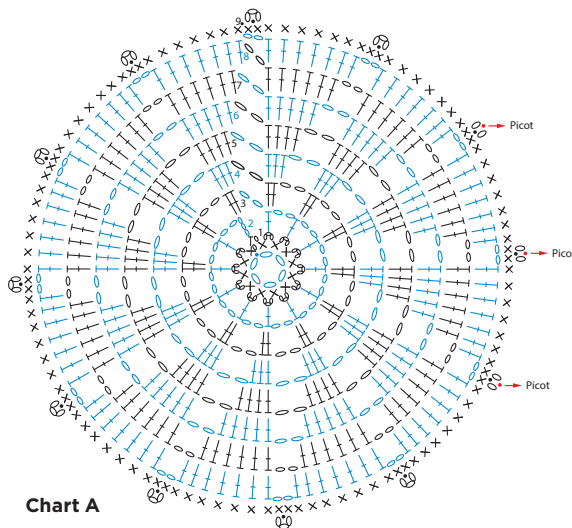


Chart A

(skip 1 ch, tr in next ch, tr in next tr, ch2) 11 times.

Round 4 (Skip 1 ch, tr in next ch, tr in each tr to next ch-sp, ch2) 12 times.

Rounds 5-8 Repeat Round 4.

Round 9 *Dc in each of next 7 tr, (dc, Picot, dc) in next ch-2 sp; repeat from * 11 more times, ss to first dc, fasten off. Join the Circles while working Round 9, by replacing the second ch of each Picot with a ss to the appropriate Picot on the next circle. Each Circle is joined to the next in three places; see **Chart B** for the Picots to join.



Chart B
Joining
spiral circles

Key

- ⑤ Foundation ch ring joined with ss. Number of ch indicated
- Slip stitch (ss)
- Chain (ch)
- ⑦ Chain space with number of ch indicated
- × Double crochet (dc)
- ⓪ Ch-3 picot
- Half treble crochet (htr)
- Treble crochet (tr)
- Double treble crochet (dtr)
- All joining sts marked in red
- Indicates where to join sts

On the charts, all RS rows are read from right to left, and all WS rows from left to right

ALPACA RHYTHM

~~~~~ Scheepjes Alpaca Rhythm (80% Alpaca 20% extra fine wool, 25g/200m) ~~~~~



**651**  
Quickstep



**652**  
Smooth



**653**  
Foxtrot



**654**  
Robotic



**655**  
Twist



**656**  
Polka



**657**  
Charleston



**658**  
Boogie



**659**  
Lindy



**660**  
Calypso



**661**  
Vogue



**662**  
Paso



**663**  
Tango



**664**  
Flamenco



**665**  
Hip Hop



**666**  
Merengue



**667**  
Jitterbug



**668**  
Disco



**669**  
Cha Cha



**670**  
Bop



## Large triangles (make 3)

### See Chart C

Ch6, ss in first ch to join into a ring.

**Row 1** (RS) Ch4 (counts as first tr throughout), (tr into ring, ch1) 4 times, 2tr into ring, turn. [11 sts]

**Row 2** Ch4, (tr, ch1) twice in next tr, tr in next tr, ch1, (tr, ch1) 3 times in next tr (mark this st as the Centre St and continue moving marker up to the Centre St of each following row), tr in next tr, ch1, (tr, ch1, tr) in next tr, tr in top of beg ch-4, turn. [19 sts]

**Row 3** Ch4, (tr, ch1) twice in next tr, inc cl over next 3 tr, (tr, ch1) 3 times in Centre St, inc cl over next 3 tr, (tr, ch1, tr) in next tr, tr in top of beg ch-4, turn.

**Row 4** Ch4, (tr, ch1) twice in next tr, (tr, ch1) in next tr, dec cl over sts of inc cl, (tr, ch1) in next tr, (tr, ch1) 3 times in Centre St, (tr, ch1) in next tr, dec cl over sts of inc cl, (tr, ch1) in next tr, (tr, ch1, tr) in next tr, tr in top of beg ch-4, turn.

**Row 5** Ch4, (tr, ch1) twice in next tr, (tr, ch1) in each tr to Centre St, (tr, ch1) 3 times in Centre St, (tr, ch1) in each tr to last 2 sts, (tr, ch1, tr) in next st, tr in top of beg ch-4, turn. [43 sts]

**Row 6** Ch4, 2tr in next tr, 2tr in next ch, tr in each st and ch to ch before Centre St,

2tr in ch, 3tr in Centre St, 2tr in next ch, tr in each st and ch to last ch-sp, 2tr in ch, 2tr in next tr, tr in top of beg ch-4, turn. [51 sts]

**Row 7** Ch4, (tr, ch1) twice in next tr, skip next tr, (tr in next tr, ch1, skip next tr) to Centre St, (tr, ch1) 3 times in Centre St, skip next tr, (tr in next tr, ch1, skip next tr) to last 2 sts, (tr, ch1, tr) in next tr, tr in top of beg ch-4, turn. [59 sts]

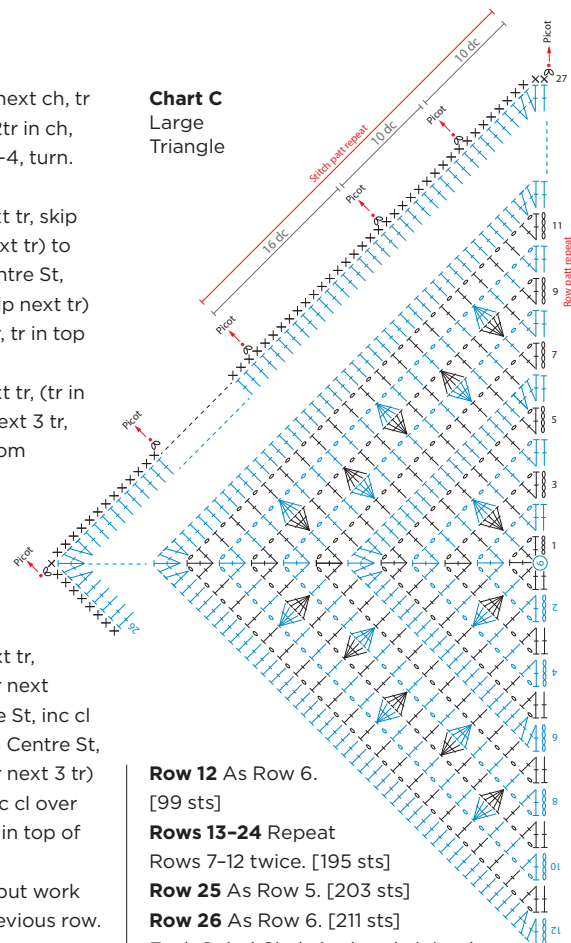
**Row 8** Ch4, (tr, ch1) twice in next tr, (tr in next tr, ch1) twice, \*inc cl over next 3 tr, (tr in next tr, ch1) 3 times; rep from \* to 5 tr before Centre St, inc cl over next 3 tr, (tr in next tr, ch1) twice, (tr, ch1) 3 times in Centre St, mirror this patt on other side of Centre St to end of row, turn.

**Row 9** Ch4, (tr, ch1) twice in next tr, (inc cl over next 3 tr, dec cl over next 3 tr) repeat to 3 tr before Centre St, inc cl over next 3 tr, (tr, ch1) 3 times in Centre St, (inc cl over next 3 tr, dec cl over next 3 tr) repeat to last (4 tr and ch-4), inc cl over next 3 tr, (tr, ch1, tr) in next tr, tr in top of beg ch-4, turn.

**Row 10** Work in patt as Row 5, but work dec cl over each inc cl of the previous row.

**Row 11** As Row 5. [91 sts]

### Chart C Large Triangle



**Row 12** As Row 6.

[99 sts]

**Rows 13-24** Repeat

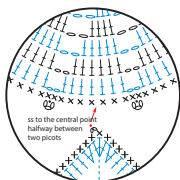
Rows 7-12 twice. [195 sts]

**Row 25** As Row 5. [203 sts]

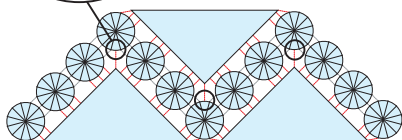
**Row 26** As Row 6. [211 sts]

Each Spiral Circle is already joined





**Chart D**  
Joining large triangles



to the next in 3 places. This leaves 3 Picots on each side of each Circle to join to the Large Triangle. Be careful when joining to the first Picot of the first Circle that you identify the next 3 Picots round from the ones already joined, and make the first join to the right hand one of these. **See Chart D** for position of triangles, circles and joins:

**Row 27** \*(Ch1, ss to Picot, ch1, dc in next 10 sts) twice, ch1, ss to Picot, ch1, dc in next 16 sts\*; rep from \* twice more, omitting last 2 dc on final repeat. The last dc worked should be in the Centre St. Three Spiral Circles are now joined; join to the fourth by working (ch1, ss to base of fourth circle mid-way between 2 picots, ch1), dc in next 13 sts. Rep from \* to \*\* twice more, ch1, ss to Picot, ch1, dc in next 10 sts, ch1, ss to Picot, ch1, dc in next 9 sts, ch1, ss to Picot, ch1, dc in last st, fasten off.

### Small triangles (make 2)

#### See Chart E

Ch6, ss in first ch to join into a ring.

**Row 1** (RS) Ch4 (counts as first tr throughout), (tr, ch1) twice into ring, 2tr into ring, turn. [7 sts]

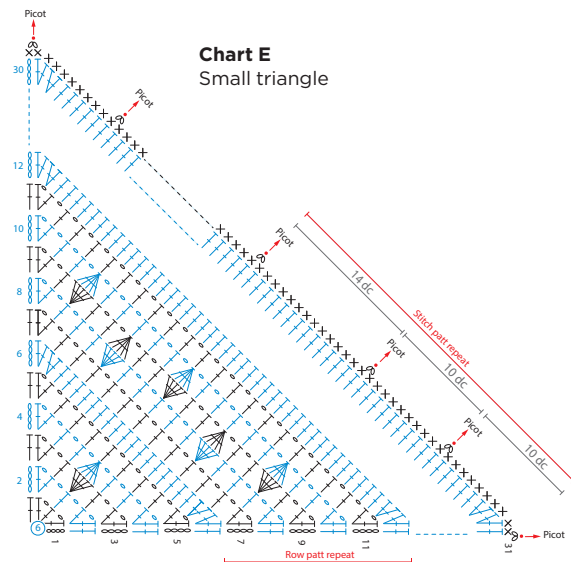
**Row 2** Ch4, (tr, ch1) twice into next tr, tr in next tr, ch1, (tr, ch1, tr) in next st, tr in top of beg ch-4, turn. [11 sts]

Now you will continue working as for the Large Triangle, but working only the first half of the row, up to the point where you have worked the stitch that would be the Centre St on the Large Triangle, then tr in the last stitch. The next few rows are written in full to help you establish the pattern, see also **Chart E** for reference.

**Row 3** Ch4, (tr, ch1) twice in next tr, inc cl over next 3 tr, (tr, ch1, tr) in next tr (last st worked is Centre St of Large Triangle), tr in top of beg ch-4, turn.

**Row 4** Ch4, (tr, ch1) twice in next tr, (tr, ch1) in next tr, dec cl over sts of inc cl, (tr, ch1) in next tr, (tr, ch1, tr) in next tr (last st worked is Centre St of Large Triangle), tr in top of beg ch-4, turn.

**Row 5** Ch4, (tr, ch1) twice in next tr, (tr, ch1) in each tr to last 2 tr, (tr, ch1, tr) in next tr (last st worked is Centre St of Large Triangle), tr in top of beg ch-4, turn. [23 sts]



**Chart E**  
Small triangle

**Row 6** Ch4, 2tr in next tr, 2tr in next ch, tr in each st and ch to last ch, 2tr in ch, 2tr in next tr (last st worked is Centre St of Large Triangle), tr in top of beg ch-4, turn. [27 sts]

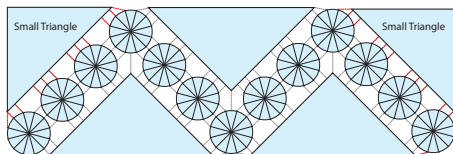
**Rows 7-24** Continue working as for first half of row of Large Triangle, as established. [99 sts]

**Rows 25-30** Repeat Rows 7-12 as established. [123 sts]

In the following row, join to the Spiral



**Chart F** Joining small triangles



Circles as explained below. See **Chart F** for reference.

**Row 31 \*** (Ch1, ss to Picot, ch1, dc in next 10 sts) twice, ch1, ss to Picot, ch1, dc in next 14 sts; rep from \* twice more, ch1, ss to Picot, ch1, dc in next 10 sts, ch1, ss to Picot, ch1, dc in last st, fasten off.

### Edging

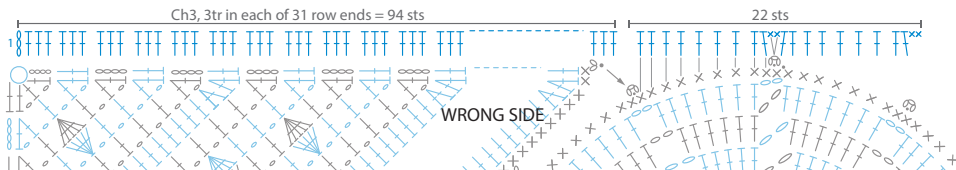
#### See Charts G and H

Rejoin the yarn with WS facing to the short end of the shawl that begins with the edge of the Small Triangle (Chart G).

**Row 1** (WS) Ch3 (counts as tr throughout), 3tr in each row end of the 31 rows of the Small Triangle [94 sts], working in the side of the Spiral Circle before the next Picot: \*tr in each of the next 9 dc between Picots, 2dc in next Picot; rep from \*, turn. [116 sts]

On the opposite end of the Shawl you

**Chart G** Row 1 edging (This will be reversed for the other end of shawl)



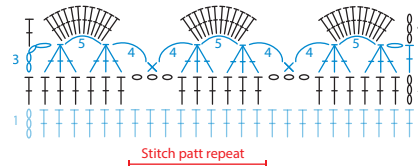
will need to reverse this row to work the stitches into the Circle first, followed by the stitches in the row end of the Small Triangle.

**Row 2** (RS) Ch3, (tr in each of next 6 sts, ch3, skip 3 sts) repeat to last st, tr in top of beg ch-3, turn.

**Row 3** Ch4 (counts as tr and ch1), \*tr3tog, ch5, tr3tog, ch4, dc in ch-3 sp, ch4; repeat from \* to last 7 sts, tr3tog, ch5, tr3tog, ch1, tr in top of beg ch-3, turn.

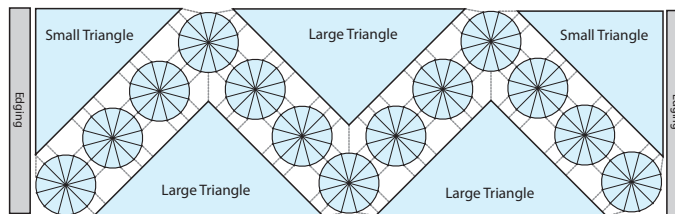
**Row 4** Ch3, 12tr in each ch-5 sp to end, tr in top of beg ch-3, fasten off and weave

**Chart H** Edging



in ends.

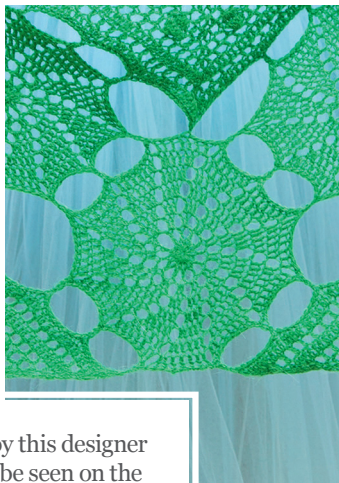
Repeat for the other short side of the shawl, working the reverse of Row 1, so work in the Picot and the sides of the Spiral Circle first, followed by the row ends of the Small Triangle.



### To Finish

Weave in all remaining ends and block to measurements.





More patterns by this designer  
and others can be seen on the  
Scheepjes website  
[www.scheepjes.com](http://www.scheepjes.com)

