

ROWAN



TUSSAH

By Annika Andrea Wolke

ZB250-00007

v.1

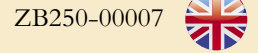


© Copyright MEZ Crafts UK Ltd., 2019.



TUSSAH

by Anika Andrea Wolke



v.1

YARN

Silky Lace

A Amazonite (007)	2	x 50gm
B Jade (009)	1	x 50gm

More Yarn
Information

on knitrowan.com

NEEDLES

2¾mm (no 12) (US 2) circular needle, at least
100 cm long (see pattern note).

TENSION

30 sts and 44 rows to 10 cm measured over patt and 30 sts and 50 rows
to 10 cm measured over g st, both using 2¾mm (US 2) needles.

FINISHED SIZE

Completed shawl meas approx 33.5 cm (13¼ in) at its deepest and
145 cm (57 in) along cast-off edge.

Pattern note:

A circular needle is used to accommodate the large number of sts.
Use in the same way as straight needles, turning at the end of each
row.

SHAWL

Using 2¾mm (US 2) circular needle and yarn A cast on 510 sts.

Next row (WS): Purl

Now work in patt from chart, repeating the 17 st patt rep 30 times
across each row as folls:

Work all 12 rows of chart 6 times, then rep rows 1 to 6 once more,
ending with RS facing for next row. (Work should meas 18 cm).

Break off yarn A and join in yarn B.

Now work short row shaping in g st throughout, cont as folls:

Row 1 (RS): K 149, place marker, K 212, place marker, K1 and turn
(leaving rem 148 unworked).

Row 2: K1, slip marker, K212, slip marker, K1 and turn (leaving rem
148 unworked).

Row 3: K1, slip marker, K to next marker, remove marker, sl 1, K1,
psso, K2, replace marker, K1 and turn. 509 sts.

Row 4: K1, slip marker, K to next marker, remove marker, K2tog,
K2, replace marker, K1 and turn. 508 sts.

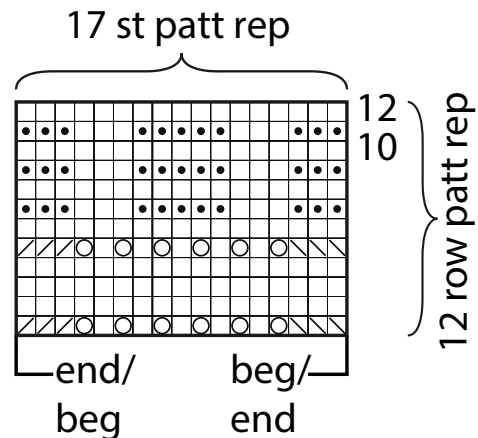
Rep rows 3 and 4 for a further 36 times, ending after all sts have been
worked and with RS facing for next row. 436 sts.

Next row (RS): Removing markers as you go, K to end. Cast off
knitwise (on **WS**).

MAKING UP

Press as described on the information page.

See information page for finishing instructions.



Key

- ☐ K on RS,
P on WS
- ☒ P on RS
- ☒ Sl1, K1, psso
- ☒ K2tog
- ☒ yfwd

Information
Pages