



pattern notes

this hat is knitted bottom up and in the round. it features a 1x1 ribbed brim and stranded colourwork throughout the body. it is a fitted hat with no slouch. the pattern includes instructions on how to make it slouchier if that's your preferred fit.
the required decrease technique is k2tog.

the repeat pattern for the colourwork is 4 stitches. the chart provided here has 12 rows for ease of reading. please note that row 5 to 12 on the chart are repeats.

please check the gauge before knitting, use larger needles for swatch.

the tundra hat is unisex and comes in two sizes to fit head circumference:

small: 53-58 cm / 21-23"
medium: 58-61 cm / 23-25"

the requirement for the sizes are written in the following format:
(small, medium)

to knit a bigger or smaller hat than the pattern provides, simply add number of stitches in multiples of 4 to achieve desired size.



tools & materials

YARN

istex lettlopi
weight - aran

option 1:

colour a - 1420 murky: 76 m / 83 yards

colour b - 0086 light beige heather: 18 m / 20 yards

colour c - 1400 camel: 16 m / 18 yards

option 2

colour a - 0058 dark gray heather: 80 m / 87 yards

colour b - 0054 ash heather: 24 m / 26 yards

colour c - 9427 rust heather: 20 m / 22 yards

CIRCULAR NEEDLE

3.5 mm / US 4

4 mm / US 6

WIRE LENGTH

40 cm / 16"

GAUGE

18 sts x 24 rows to 10 cm x 4"

NOTIONS

stitch marker

tapestry needle

ABBREVIATIONS

co: cast on

k: knit

k2tog: knit two stitches together

*: repeat between

SKILLS

level - advanced beginner

join and knit in the round

stranded colourwork knitting

decreasing

weaving ends in



begin pattern

using larger needles, co (88, 96) with colour b. cut working yarn.

switch to smaller needles and attach colour a.
join in the round and place marker.

start brim with *k1, p1* until you reach 5 cm / 2" from co edge.

brim

start brim with *k1, p1* until you reach 5 cm / 2" from co edge.

body

switch to larger needles,
begin chart.

once the chart is completed, continue
knitting in plain stockinette with
colour a until you reach
(18 cm / 7", 20 cm / 8")

to make a slouchier fit, increase the
number of plain stockinette in colour a
until you reach the desired length.

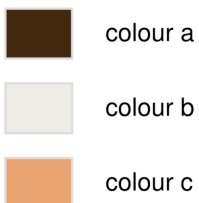
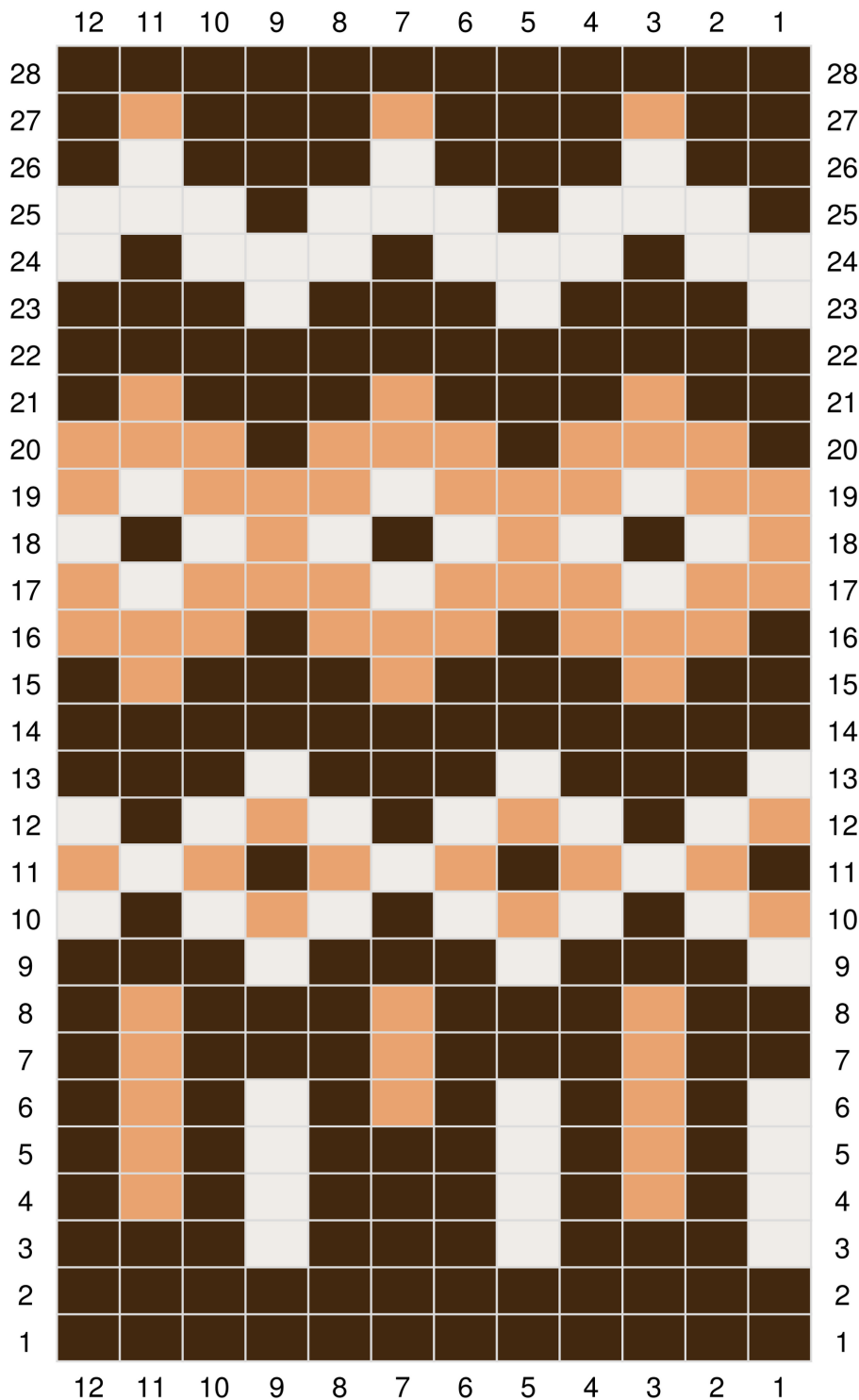
decreases

small

round 1: *k9, k2tog* (80)
round 2: *k8, k2tog* (72)
round 3: *k7, k2tog* (64)
round 4: *k6, k2tog* (56)
round 5: *k5, k2tog* (48)
round 6: *k4, k2tog* (40)
round 7: *k3, k2tog* (32)
round 8: *k2, k2tog* (24)
round 9: *k1, k2tog* (16)

medium

round 1: *k10, k2tog* (88)
round 2: *k9, k2tog* (80)
round 3: *k8, k2tog* (72)
round 4: *k7, k2tog* (64)
round 5: *k6, k2tog* (56)
round 6: *k5, k2tog* (48)
round 7: *k4, k2tog* (40)
round 8: *k3, k2tog* (32)
round 9: *k2, k2tog* (24)
round 10: *k1, k2tog* (16)



finishing

cut the working yarn with at least 10 inches of tail.
attach the yarn to a tapestry needle. thread the yarn through all your stitches and
slide them off the working needle.
when you have finished with all the stitches, pull it snugly and
once you've ensured that the stitches are secured,
insert the tapestry needle into the hat.
tie a knot.

weave in loose ends.

wet block.

final measurements:

21.5 cm / 8.5" x 20.5 cm / 8"

23 cm / 9" x 22.5 cm / 8.9"





share your work with me @thepetiteknitter using #tundrahat

Pattern & photos may not be reproduced, redistributed, sold or shared in full or in part, electronically or physically.

Products created from this pattern may not be sold.

All pattern files are protected by Canada copyright and are the property of The Petite Knitter