

# Tombo

## Wrap

by Irina Anikeeva



---

## Finished measurements

76.5"/191.5 cm length.

16.5"/41.5 cm width.

Measurements are taken after blocking.

## Yarn

Approximately 1425 yds/1303 m of fingering weight yarn: 890 yds/816 m of Color A and 535 yds/489 m of Color B.

Color A: 5 skeins of GGH Merino Soft (100% Merino, 186 yds/170 m in 50 gr); #114, Entenblau (Navy).

Color B: 3 skeins of GGH Merino Soft (100% Merino, 186 yds/170 m in 50 gr); #003, Wollweiß (White).

## Needles

Size US 6/4 mm circular needles 32"/80 cm long, or size to obtain gauge. 2 double-pointed needles of same size.

Size US 7/4.5 mm circular needles 32"/80 cm long (optional).

While gauge is not critical for this project, different gauge can affect the size and overall yardage.

## Additional tools

Tapestry needle, blocking wires (optional).

## Gauge

20 stitches and 40 rows = 4"/10 cm on size US 6/4 mm needles in Garter Stitch, after blocking.

## Notes

- The wrap is worked flat from one longer edge to another. Circular needle is used to accommodate large number of stitches.
- Note that most knitters will require a different needle size to obtain the same gauge in single color as in colorwork. Use larger needle for mosaic stitch if needed.
- Blocking wires are recommended for best results in achieving crisp, clean edges during finishing.

---

## Notes on Mosaic Stitch

This is a slip stitch, or mosaic, pattern. Each row is worked using only one color, and by slipping a stitch without working it, a stitch from the row below brings a new color into the working row. Every right side row is followed by a wrong side row of the same color. The colors change every two rows.

To work a slip stitch, move it to the right needle without knitting or purling it, purlwise. On all right side rows slip all of the slipped stitches with yarn in back. On all wrong side rows slip all the slipped stitches with yarn in front. In this pattern stitches on both the right and the wrong sides are knitted.

When changing colors, always drop the dark yarn (Color A in this pattern) in front and pick up the light yarn (Color B) behind it.

## How to read Mosaic Stitch Chart

The chart begins at the lower right corner on Row 1. Each horizontal row represents two rows of knitting. The rows going from right to left are on the right side, and the rows going from left to right are on the wrong side.

On every row that begins and ends with a blue square (Color A), all Color A stitches are knitted and all Color B stitches are slipped. On every row that begins and ends with a white square (Color B), all Color B stitches are knitted, and all Color A stitches slipped.

---

## Glossary

<b>K</b>	Knit	<b>RS</b>	Right Side
<b>K2TOG</b>	Knit 2 stitches together – 1 stitch decreased.	<b>SSK</b>	Slip 2 stitches individually knitwise, place them back to left needle and knit these 2 stitches together through back loops – 1 stitch decreased.
<b>M1L</b>	(Make one left): with left-hand needle tip, pick up the thread between sts from front to back. Knit lifted loop through the back loop.	<b>WS</b>	Wrong side
<b>P</b>	Purl		

## Directions

### BODY

With Color A and size US 6/4 mm needle, cast on 383 stitches (suggested method: German Cast On, see Special Techniques). Knit all stitches on the following row.

*Note: The mosaic pattern repeat is 12 stitches, so if you wish to make your wrap longer or shorter, you may add or subtract the number of stitches in multiples of 12 when casting on.*

**Shifting Row (RS):** K1, M1L, knit to last 3 stitches, SSK, k1. Knit all stitches for the next 3 rows.

Repeat last 4 rows another 5 times, then repeat Shifting Row once more. Knit all stitches on the next row. Join Color B and knit 2 rows. Change to US 7/4.5 mm needle, if necessary.

Start working on Mosaic Chart as follows:

**Shifting Row (RS):** With Color A, work Row 1 of Mosaic Chart.

**Next Row (WS):** With Color A, work Row 2 of Mosaic Chart.

**Next Row (RS):** With Color B, work Row 3 of Mosaic Chart.

**Next Row (WS):** With Color B, work Row 4 of Mosaic Chart.

Continue working as established, following the Mosaic Chart through Row 114. Change to US 6/4 mm, needle if necessary.

With Color B, knit 2 rows. Break Color B.

**Shifting Row (RS):** With Color A, K1, M1L, knit to last 3 stitches, SSK, k1.

Knit all stitches for the next 3 rows.

Repeat last 4 rows another 5 times, then repeat Shifting Row once more. Knit all stitches on the next row.

Bind off all stitches (suggested: Icelandic Bind Off, see Special Techniques).

### FINISHING

With double-pointed needles and Color A, cast on 3 stitches. Slide stitches down the right end of the needle and, beginning at the bottom of short side of the wrap, work applied i-cord on sides as follows: \*K2, slip 1 stitch purlwise with yarn in back, yarn over, pick up and knit 1 stitch from edge, pass yarn over and slipped stitch over the picked up stitch. Slide the stitches down to the right end of the needle; repeat from \*, picking up 1 stitch in every other stitch/row across short side edge. When all rows are worked, bind off all stitches. Repeat on opposite short side.

Weave in ends, block to measurements.

## Special Techniques

### German Cast On

Leaving a long tail (about 0.5"/1.3 cm for each stitch to be cast on), make a slipknot (this counts as the first stitch.) Place your thumb and index finger between the yarn ends so that the working yarn is around your index finger and the tail end is around your thumb. Secure the ends with your other fingers and hold your palm upward, making a V of yarn.

\*Bring the needle in front of the thumb, under both strands around the thumb, down into the center of the thumb loop, then forward toward you. Now bring the needle over the strand going to the index finger to grab it.

Bring the needle back through the loop on the thumb, turning the thumb slightly to make room for the needle to pass through.

Drop the loop off the thumb and, placing the thumb back in the V configuration, tighten up the resulting stitch on the needle.

Repeat from \* for the desired number of stitches.

Distribute the stitches over your chosen needles and join for working in the round.

### Icelandic Bind Off

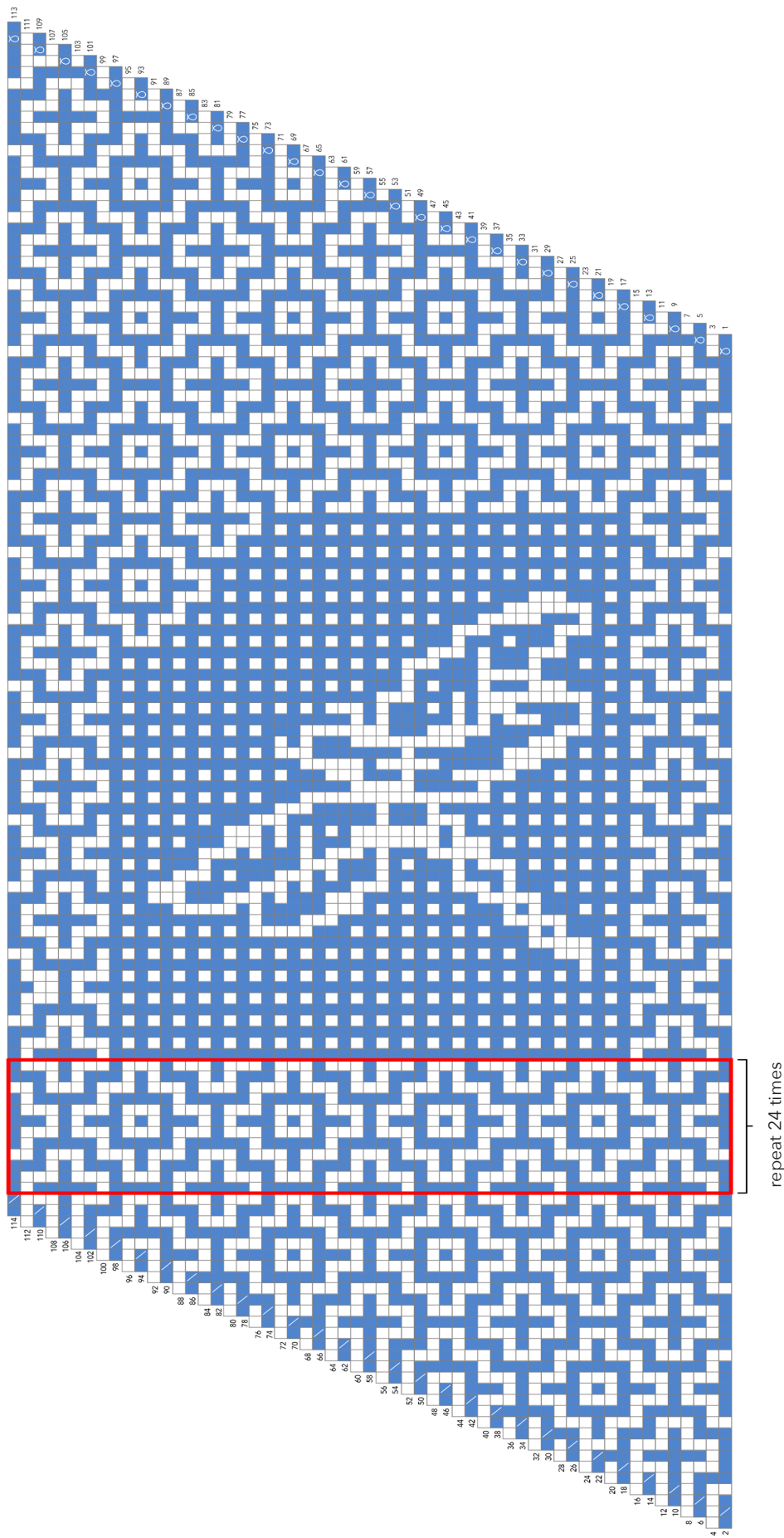
K1, \*slip stitch from right needle to left needle purlwise. Insert right needle purlwise into first stitch on left needle, then knitwise into second stitch to catch front loop of second stitch. Draw front loop of second stitch through first stitch and knit it. Drop both stitches from left needle. Repeat from \*.

For comments or questions regarding this pattern, please contact me at [irmiandesign@gmail.com](mailto:irmiandesign@gmail.com)

You can also find me on Ravelry as Hibis411

Follow me on Instagram [@irmiandesign](https://www.instagram.com/irmiandesign) or Facebook: [IrmianDesign](https://www.facebook.com/IrmianDesign)

# Mosaic Chart



## Legend

With Color A, knit

With Color B, knit

(Make one left): with left-hand needle tip, pick up the thread between sts from front to back.

Knit lifted thread through the back loop.

ssk: slip 2 stitches individually knitwise, place them back to left needle and knit these 2 stitches together through back loops.

12-st pattern repeat