



Take it all

mini... mini...

Mystery

a mystery kal by Lisa Hannes / maliha designs

Mystery KAL Infosheet

MATERIALS & GAUGE:

Yarn: Designed for fingering weight yarn in solid/semisolid colourways.

You'll need 1 main colour and 8 contrast colours to make the original version (see part about choosing the yarn).

Allow at least approx. 420yds/380m of your main colour and 52yds/48m of each contrast colour (or 420yds/380m total if working with 1 contrast colour only).

Yarn used for sample:

Main Colour: Madelinetosh tosh merino light (fingering weight, 100g = 420yds/380m), 1 skein in colourway Tern

Contrast Colours: Madelinetosh Unicorn Tails (fingering weight, 12.5g = 52yds/48m), 1 skein each in colourways:

Silver Fox (C1), Edison Bulb (C2), Celadon (C3), Button Jar Blue (C4), Cousteau (C5), Neon Peach (C6), Purple Basil (C7), Pop Rocks (C8)

Gauge: Is not critical for this project but differences will affect yardage requirements and the finished size. Be sure to use a larger needle size than may be recommended for your yarn to allow a good drape of the finished item.

Gauge on sample: 19 sts x 38 rows = 10x10cm/4x4" in garter stitch after blocking.

If you work on a looser gauge you will need more yardage!

Needles: 3.5 mm / US 4 or size to obtain gauge, one size larger needles for the bind-off (optional).

Other: tapestry needle to weave in the ends; scales to weigh your yarn can be helpful; 16 removable markers (optional)

NOTES:

This colourful shawl is playing with colours and stripes. It is combining garter stitch with some easy lace and will be perfect for your mini skeins or using up your leftovers! It is fun & playful, knits up quickly and will make a wonderful accessory that is easy and cosy to wear.

If you like come and join my group for chat, sharing pics and help along the way: [maliha designs](#)

I hope you'll enjoy the pattern and the KAL !

ABBREVIATIONS:

k = knit	p = purl
st(s) = stitch(es)	sl = slip purlwise
yo = yarn over	rep. = repeat
pm/rm = place/remove marker	m = marker (removable)
wyif = with yarn in front of work	
k2tog = knit two stitches together (1 st decreased)	
ssk = slip, slip, knit (1 st decreased)	
kfb = knit into the front and back loop (1 st increased)	
pfb = purl into the front and back loop (1 st increased)	
MC / CC / C = main colour / contrast colour / colour	
CO / BO = cast on / bind off	
RS / WS = right side / wrong side of work	
RH / LH = right hand / left hand needle	
w&t = wrap and turn: knit to point specified in pattern, slip next stitch purlwise from LH to RH needle, bring yarn to front of work, slip st back to LH needle, turn work, ready to begin working in the other direction. Helpful tutorial here: http://www.purlsoho.com/create/2008/06/18/short-rows/	

CHOOSING THE YARN:

A few things to keep in mind when choosing your yarn: Choose a yarn that knits up lovely and squishy in garter stitch and also keeps a nice body in mesh-like lace. The yarn should block out well.

Solid/semisolid colourways will work best, I wouldn't recommend variegated or striping yarns for this pattern. Your MC should have good contrast with all the other colours! C2, C4, C6, C8 were my bright „highlight colours“. Variations:

It would also be possible to use one CC only if you prefer, or two alternating (one for C1, C3, C5, C7 and the other for C2, C4, C6, C8). You could even use two MC's: one for clue 1-3 and the other for clue 4.

The pattern also provides enough textural interest that it works well as a two-coloured version (1MC, 1CC).

So, grab your mini skeins or leftovers and have fun choosing your yarn + colours!



Original sample yarn and colours

1st

Mystery Clue

WRITTEN INSTRUCTIONS:

The instructions are divided into sections to make the reading easier. Each section is numbered separately. When it says to repeat rows xx please refer to the corresponding rows of the same section.

Work in main colour (MC), contrast colour 1 (C1) or contrast colour 2 (C2).

Directions: CO 4 sts using Long-Tail cast-on with your main colour (MC).

SET UP:

SU-Row (MC) (WS): sl1wyif, k1, kfb, sl1wyif (= 5 sts)

SECTION 1 (garter stripes):

To carry up the other colour cross the yarns in the back at the beginning of each RS row and always pick up the new colour yarn from underneath to get a neat edge.

Row 1 (MC) (RS): kfb, knit to end of row (+ 1 st)

Row 2 (MC) (WS): sl1wyif, knit to last 2 sts, kfb, sl1wyif (+ 1 st)

Join (C1) yarn (on first repeat only).

Row 3 (C1): kfb, knit to last 2 sts, k2tog

Row 4 (C1): sl1wyif, knit to last 2 sts, kfb, sl1wyif (+ 1 st)

Row 5 (C1): kfb, knit to last 2 sts, k2tog

Row 6 (C1): sl1wyif, knit to last 2 sts, kfb, sl1wyif (+ 1 st)

4 sts increased = 9 sts after first repeat

Rows 7-96: Work rows 1-6 fifteen more times. You will have 16 double ridges in colour (C1).

60 sts increased = 69 sts total

Cut (C1) yarn.

Row 97 (MC): kfb, knit to end of row (+ 1 st)

Row 98 (MC): sl1wyif, knit to last 2 sts, kfb, sl1wyif (+ 1 st)

Row 99 (MC): kfb, knit to last 2 sts, k2tog

Row 100 (MC): sl1wyif, knit to last 2 sts, kfb, sl1wyif (+ 1 st)

Row 101 (MC): kfb, knit to last 2 sts, k2tog

Row 102 (MC): sl1wyif, knit to last 2 sts, kfb, sl1wyif (+ 1 st)

4 sts increased = 73 sts total

Cut (MC) yarn.

SECTION 2 (vertical lace trellis):

Join (C2) yarn.

Row 1 (C2) (RS): kfb, knit to end of row (+ 1 st)

Row 2 (C2) (WS): sl1wyif, knit to last 2 sts, kfb, sl1wyif (+ 1 st)

Row 3 (C2): kfb, [yo, k2tog] rep. to last 2 sts, k2tog

Row 4 (C2): sl1wyif, purl to last 2 sts, pfb, sl1wyif (+ 1 st)

Row 5 (C2): kfb, k1, [ssk, yo] rep. to last 2 sts, k2tog

Row 6 (C2): sl1wyif, purl to last 2 sts, pfb, sl1wyif (+ 1 st)

Row 7 (C2): kfb, [yo, k2tog] rep. to last 2 sts, k2

Row 8 (C2): sl1wyif, purl to last 2 sts, pfb, sl1wyif (+ 1 st)

Row 9 (C2): kfb, k1, [ssk, yo] rep. to last 3 sts, k1, k2tog

Row 10 (C2): sl1wyif, purl to last 2 sts, pfb, sl1wyif (+ 1 st)

Row 11 (C2): kfb, [yo, k2tog] rep. to last 3 sts, k1, k2tog

Row 12 (C2): sl1wyif, purl to last 2 sts, pfb, sl1wyif (+ 1 st)

Row 13 (C2): kfb, k1, [ssk, yo] rep. to last 3 sts, k3 (+ 1 st)

Row 14 (C2): sl1wyif, purl to last 2 sts, pfb, sl1wyif (+ 1 st)

Rows 15-26 (C2): rep. rows 3-14 one more time. (+ 8 st)

Row 27 (C2): kfb, [yo, k2tog] rep. to last 2 sts, k2tog

Row 28 (C2): sl1wyif, purl to last 2 sts, pfb, sl1wyif (+ 1 st)

Row 29 (C2): kfb, k1, [ssk, yo] rep. to last 2 sts, k2tog

Row 30 (C2): sl1wyif, purl to last 2 sts, kfb, sl1wyif (+ 1 st)

20 sts increased = 93 sts total

Cut (C2) yarn. Join (MC) yarn.

Row 31 (MC): kfb, knit to end of row (+ 1 st)

Row 32 (MC): sl1wyif, knit to last 2 sts, kfb, sl1wyif (+ 1 st)

Row 33 (MC): kfb, knit to last 2 sts, k2tog

Row 34 (MC): sl1wyif, knit to last 2 sts, kfb, sl1wyif (+ 1 st)

Row 35 (MC): kfb, knit to last 2 sts, k2tog

Row 36 (MC): sl1wyif, knit to last 2 sts, kfb, sl1wyif (+ 1 st)

4 sts increased = 97 sts total

Cut (MC) yarn.

1st

Mystery Clue

CHARTED INSTRUCTIONS:

All odd-numbered rows are RS (read from right to left) and all even-numbered rows are WS (read from left to right).

Please note that you will not work the decrease at the end of every third RS row.

Work in / change to main colour (MC), contrast colour 1 (C1) or contrast colour 2 (C2)

Directions: CO 4 sts using Long-Tail cast-on with your main colour (MC).

SET UP:

Work SU row once in (MC). (1 st increased = 5 sts total)

SECTION 1 (garter stripes):

To carry up the other colour in this section, cross the yarns in the back at the beginning of each RS row and always pick up the new colour yarn from underneath to get a neat edge.

Join (C1) yarn.

Work and repeat rows 1-6 sixteen times changing colours as stated in chart.

You will have 16 double ridges in colour (C1). (64 sts increased = 69 sts total)

Cut (C1) yarn.

Then work rows 7-12 in (MC) once. (4 sts increased = 73 sts total)

Cut (MC) yarn.

SECTION 2 (vertical lace trellis):

Join (C2) yarn.

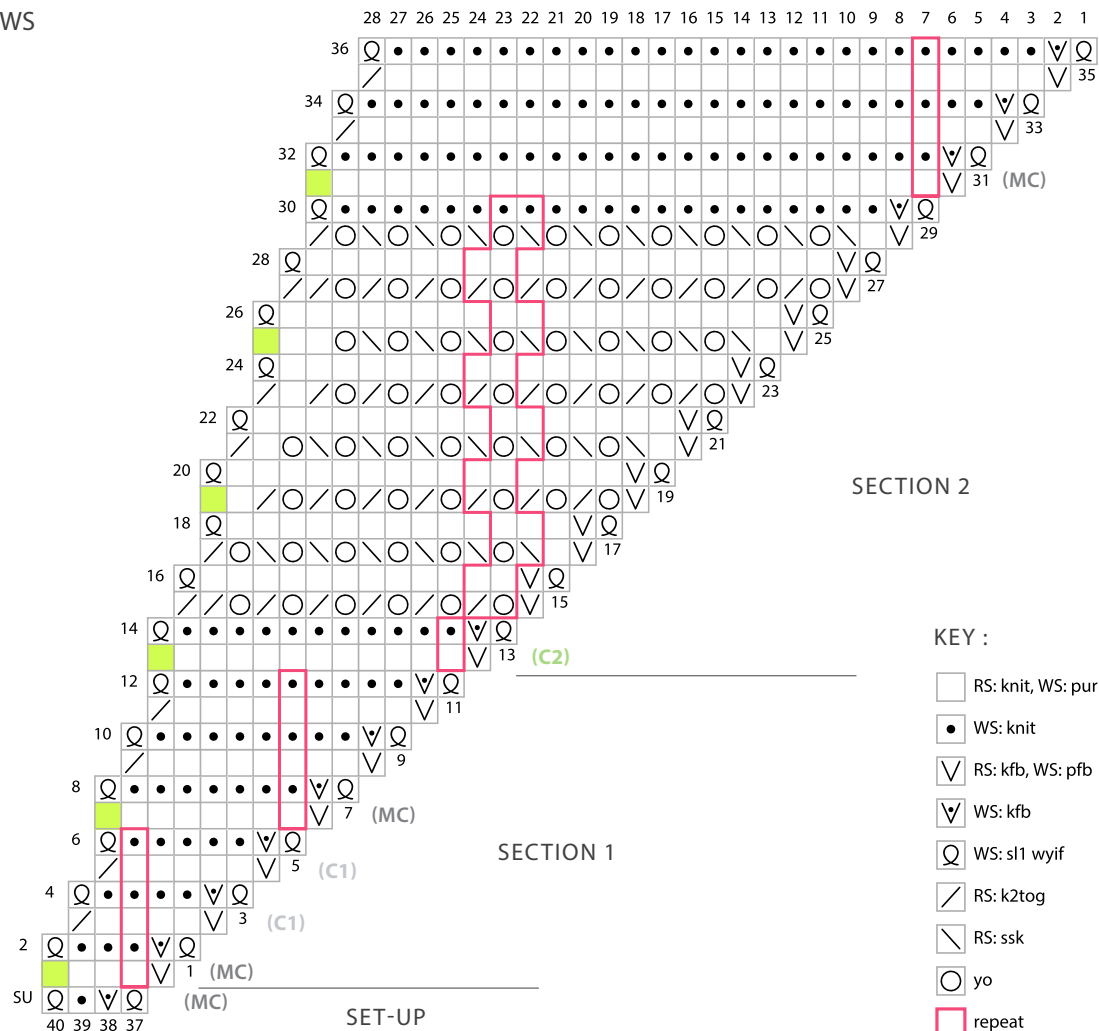
Work rows 13+14 in colour (C2) once. Then work rows 15-26 two times, and rows 27-30 one time. (20 sts increased = 93 sts total)

Cut (C2) yarn.

Join (MC) yarn.

Then work rows 31-36 in (MC) once. (4 sts increased = 97 sts total)

Cut (MC) yarn.



KEY :

- RS: knit, WS: purl
- WS: knit
- RS: kfb, WS: pfb
- WS: kfb
- WS: sl1 wyif
- RS: k2tog
- RS: ssk
- yo
- repeat
- no decrease

2nd Mystery Clue

WRITTEN INSTRUCTIONS:

The instructions are divided into sections to make the reading easier.
Each section is numbered separately. When it says to repeat rows xx please refer to the corresponding rows of the same section.
Work in main colour (MC), contrast colour 3 (C3) or contrast colour 4 (C4).

Directions:

You should have 97 sts on your needles after the last row of the first clue.

Now, continue as follows:

SECTION 3 (eyelet fabric):

Join (C3) yarn.

Row 1 (C3) (RS): kfb, knit to end of row	(+ 1 st)
Row 2 (C3) (WS): sl1wyif, <u>purl</u> to last 2 sts, pfb, sl1wyif	(+ 1 st)
Row 3 (C3): kfb, [<u>yo, k2tog, k2</u>] rep. to last 2 sts, k2tog	
Row 4 (C3): sl1wyif, purl to last 2 sts, pfb, sl1wyif	(+ 1 st)
Row 5 (C3): kfb, knit to last 2 sts, k2tog	
Row 6 (C3): sl1wyif, purl to last 2 sts, pfb, sl1wyif	(+ 1 st)
Rows 7-24 (C3): Work rows 1-6 three more times.	(+ 12 sts)
16 sts increased = 113 sts total	

Cut (C3) yarn. Join (MC) yarn.

Row 25 (MC): kfb, knit to end of row	(+ 1 st)
Row 26 (MC): sl1wyif, knit to last 2 sts, kfb, sl1wyif	(+ 1 st)
Row 27 (MC): kfb, knit to last 2 sts, k2tog	
Row 28 (MC): sl1wyif, knit to last 2 sts, kfb, sl1wyif	(+ 1 st)
Row 29 (MC): kfb, knit to last 2 sts, k2tog	
Row 30 (MC): sl1wyif, knit to last 2 sts, kfb, sl1wyif	(+ 1 st)
4 sts increased = 117 sts total	

Cut (MC) yarn.

SECTION 4 (lace trellis, right bias):

Join (C4) yarn.

Row 1 (C4) (RS): kfb, knit to end of row	(+ 1 st)
Row 2 (C4) (WS): sl1wyif, knit to last 2 sts, kfb, sl1wyif	(+ 1 st)
Row 3 (C4): kfb, [<u>yo, k2tog</u>] rep. to last 2 sts, k2tog	
Row 4 (C4): sl1wyif, <u>purl</u> to last 2 sts, pfb, sl1wyif	(+ 1 st)
Row 5 (C4): kfb, [<u>yo, k2tog</u>] rep. to last 3 sts, k1, k2tog	
Row 6 (C4): sl1wyif, purl to last 2 sts, pfb, sl1wyif	(+ 1 st)
Row 7 (C4): kfb, [<u>yo, k2tog</u>] rep. to last 2 sts, <u>k2</u>	(+ 1 st)
Row 8 (C4): sl1wyif, purl to last 2 sts, pfb, sl1wyif	(+ 1 st)

Rows 9-14 (C4): Repeat rows 3-8 one more time. (+ 4 sts)

Row 15 (C4): kfb, [<u>yo, k2tog</u>] rep. to last 2 sts, k2tog	
Row 16 (C4): sl1wyif, purl to last 2 sts, pfb, sl1wyif	(+ 1 st)
Row 17 (C4): kfb, [<u>yo, k2tog</u>] rep. to last 3 sts, k1, k2tog	
Row 18 (C4): sl1wyif, <u>knit</u> to last 2 sts, kfb, sl1wyif	(+ 1 st)
12 sts increased = 129 sts total	

Cut (C4) yarn. Join (MC) yarn.

Row 19 (MC): kfb, knit to end of row	(+ 1 st)
Row 20 (MC): sl1wyif, knit to last 2 sts, kfb, sl1wyif	(+ 1 st)
Row 21 (MC): kfb, knit to last 2 sts, k2tog	
Row 22 (MC): sl1wyif, knit to last 2 sts, kfb, sl1wyif	(+ 1 st)
Row 23 (MC): kfb, knit to last 2 sts, k2tog	
Row 24 (MC): sl1wyif, knit to last 2 sts, kfb, sl1wyif	(+ 1 st)
4 sts increased = 133 sts total	

Do NOT cut (MC) yarn.

2nd Mystery Clue

CHARTED INSTRUCTIONS:

All odd-numbered rows are RS (read from right to left) and all even-numbered rows are WS (read from left to right).

Please note that you will not work the decrease at the end of every third RS row.

Work in / change to main colour (MC), contrast colour 3 (C3) or contrast colour 4 (C4).

Directions:

You should have 97 sts on your needles after the last row of the first clue.

Now, continue as follows:

SECTION 3 (eyelet fabric):

Join (C3) yarn.

Work and repeat rows 1-6 four times in (C3). (16 sts increased = 113 sts total)

Cut (C3) yarn.

Join (MC) yarn.

Then work rows 7-12 in (MC) once. (4 sts increased = 117 sts total)

Cut (MC) yarn.

SECTION 4 (lace trellis, right bias):

Join (C4) yarn.

Work rows 13+14 once and then rows 15-20 two times in (C4).

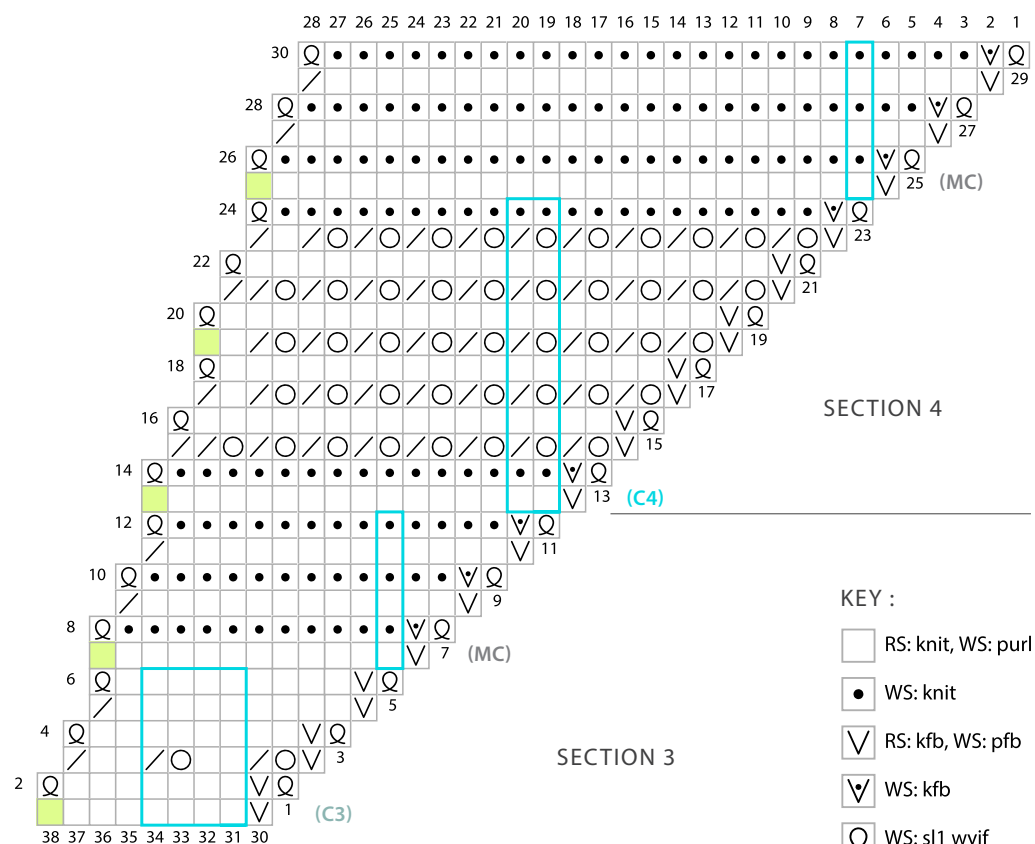
Then work rows 21-24 once. (12 sts increased = 129 sts total)

Cut (C4) yarn.

Join (MC) yarn

Now, work rows 25-30 in (MC) once. (4 sts increased = 133 sts total)

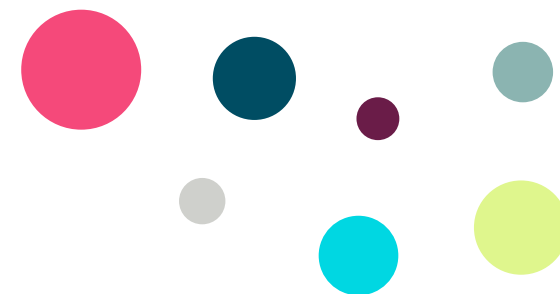
Do NOT cut (MC) yarn.



KEY :

- RS: knit, WS: purl
- WS: knit
- V RS: kfb, WS: pfb
- VV WS: kfb
- Q WS: sl1 wyif
- / RS: k2tog
- yo
- repeat
- no decrease

3rd Mystery Clue



WRITTEN INSTRUCTIONS:

The instructions are divided into sections to make the reading easier.
Each section is numbered separately. When it says to repeat rows xx please refer to the corresponding rows of the same section.

Work in main colour (MC),
contrast colour 5 (C5), contrast colour 6 (C6), or contrast colour 7 (C7).

Directions:
You should have 133 sts on your needles after the last row of the second clue.
Now, continue as follows:

SECTION 5 (garter stripes):

To carry up the other colour in this section, cross the yarns in the back at the beginning of each RS row and always pick up the new colour from underneath to get a neat edge.

Join (C5) yarn.

Row 1 (C5) (RS): kfb, knit to end of row (+ 1 st)

Row 2 (C5) (WS): sl1wyif, knit to last 2 sts, kfb, sl1wyif (+ 1 st)

Row 3 (MC): kfb, knit to last 2 sts, k2tog

Row 4 (MC): sl1wyif, knit to last 2 sts, kfb, sl1wyif (+ 1 st)

Row 5 (C5): kfb, knit to last 2 sts, k2tog

Row 6 (C5): sl1wyif, knit to last 2 sts, kfb, sl1wyif (+ 1 st)

Row 7 (MC): kfb, knit to end of row (+ 1 st)

Row 8 (MC): sl1wyif, knit to last 2 sts, kfb, sl1wyif (+ 1 st)

Row 9 (C5): kfb, knit to last 2 sts, k2tog

Row 10 (C5): sl1wyif, knit to last 2 sts, kfb, sl1wyif (+ 1 st)

Row 11 (MC): kfb, knit to last 2 sts, k2tog

Row 12 (MC): sl1wyif, knit to last 2 sts, kfb, sl1wyif (+ 1 st)

Row 13 (C5) (RS): kfb, knit to end of row (+ 1 st)

Row 14 (C5) (WS): sl1wyif, knit to last 2 sts, kfb, sl1wyif (+ 1 st)

Row 15 (MC): kfb, knit to last 2 sts, k2tog

Row 16 (MC): sl1wyif, knit to last 2 sts, kfb, sl1wyif (+ 1 st)

Row 17 (C5): kfb, knit to last 2 sts, k2tog

Row 18 (C5): sl1wyif, knit to last 2 sts, kfb, sl1wyif (+ 1 st)

Rows 19-30: Work rows 7-18 one more time. (+ 8 sts)

You will have 8 garter ridges total in colour (C5).

20 sts increased = 153 sts total

Cut (C5) yarn.

Row 31 (MC): kfb, knit to end of row (+ 1 st)

Row 32 (MC): sl1wyif, knit to last 2 sts, kfb, sl1wyif (+ 1 st)

Row 33 (MC): kfb, knit to last 2 sts, k2tog

Row 34 (MC): sl1wyif, knit to last 2 sts, kfb, sl1wyif (+ 1 st)

Row 35 (MC): kfb, knit to last 2 sts, k2tog

Row 36 (MC): sl1wyif, knit to last 2 sts, kfb, sl1wyif (+ 1 st)

4 sts increased = 157 sts total

Cut (MC) yarn.

Please continue with section 6 on the next page...

3rd Mystery Clue



WRITTEN INSTRUCTIONS (CONT.):

SECTION 6 (lace trellis, left bias):

Join (C6) yarn.

Row 1 (C6) (RS): kfb, knit to end of row	(+ 1 st)
Row 2 (C6) (WS): sl1wyif, knit to last 2 sts, kfb, sl1wyif	(+ 1 st)
Row 3 (C6): kfb, [ssk, yo] rep. to last 2 sts, k2tog	
Row 4 (C6): sl1wyif, purl to last 2 sts, pfb, sl1wyif	(+ 1 st)
Row 5 (C6): kfb, [ssk, yo] rep. to last 3 sts, k1, k2tog	
Row 6 (C6): sl1wyif, purl to last 2 sts, pfb, sl1wyif	(+ 1 st)
Row 7 (C6): kfb, [ssk, yo] rep. to last 2 sts, k2	(+ 1 st)
Row 8 (C6): sl1wyif, purl to last 2 sts, pfb, sl1wyif	(+ 1 st)
Row 9 (C6): kfb, [ssk, yo] rep. to last 2 sts, k2tog	
Row 10 (C6): sl1wyif, purl to last 2 sts, pfb, sl1wyif	(+ 1 st)
Row 11 (C6): kfb, [ssk, yo] rep. to last 3 sts, k1, k2tog	
Row 12 (C6): sl1wyif, knit to last 2 sts, kfb, sl1wyif	(+ 1 st)

8 sts increased = 165 sts total

Cut (C6) yarn. Join (MC) yarn.

Row 13 (MC): kfb, knit to end of row	(+ 1 st)
Row 14 (MC): sl1wyif, knit to last 2 sts, kfb, sl1wyif	(+ 1 st)
Row 15 (MC): kfb, knit to last 2 sts, k2tog	
Row 16 (MC): sl1wyif, knit to last 2 sts, kfb, sl1wyif	(+ 1 st)
Row 17 (MC): kfb, knit to last 2 sts, k2tog	
Row 18 (MC): sl1wyif, knit to last 2 sts, kfb, sl1wyif	(+ 1 st)

4 sts increased = 169 sts total

Cut (MC) yarn.

SECTION 7 (basic fagotting, vertical lace):

Join (C7) yarn.

Row 1 (C7) (RS): kfb, knit to end of row	(+ 1 st)
Row 2 (C7) (WS): sl1wyif, knit to last 2 sts, kfb, sl1wyif	(+ 1 st)
Row 3 (C7): kfb, [yo, ssk] rep. to last 2 sts, k2tog	
Row 4 (C7): sl1wyif, k1, [yo, ssk] rep. to last 3 sts, k1, kfb, sl1wyif	(+ 1 st)
Row 5 (C7): kfb, [yo, ssk] rep. to last 3 sts, k1, k2tog	
Row 6 (C7): sl1wyif, [yo, ssk] rep. to last 3 sts, k1, kfb, sl1wyif	(+ 1 st)
Row 7 (C7): kfb, [yo, ssk] rep. to last 2 sts, k2	(+ 1 st)
Row 8 (C7): sl1wyif, [yo, ssk] rep. to last 3 sts, k1, kfb, sl1wyif	(+ 1 st)
Row 9 (C7): kfb, [yo, ssk] rep. to last 2 sts, k2tog	
Row 10 (C7): sl1wyif, k1, [yo, ssk] rep. to last 3 sts, k1, kfb, sl1wyif	(+ 1 st)
Row 11 (C7): kfb, [yo, ssk] rep. to last 3 sts, k1, k2tog	
Row 12 (C7): sl1wyif, knit to last 2 sts, kfb, sl1wyif	(+ 1 st)

8 sts increased = 177 sts total

Cut (C7) yarn. Join (MC) yarn.

Row 13 (MC): kfb, knit to end of row	(+ 1 st)
Row 14 (MC): sl1wyif, knit to last 2 sts, kfb, sl1wyif	(+ 1 st)
Row 15 (MC): kfb, knit to last 2 sts, k2tog	
Row 16 (MC): sl1wyif, knit to last 2 sts, kfb, sl1wyif	(+ 1 st)
Row 17 (MC): kfb, knit to last 2 sts, k2tog	
Row 18 (MC): sl1wyif, knit to last 2 sts, kfb, sl1wyif	(+ 1 st)

4 sts increased = 181 sts total

Do NOT cut (MC) yarn.

3rd

Mystery Clue

CHARTED INSTRUCTIONS:

All odd-numbered rows are RS (read from right to left) and all even-numbered rows are WS (read from left to right).

Please note that you will not work the decrease at the end of every third RS row.

Work in / change to main colour (MC),
contrast colour 5 (C5), contrast colour 6 (C6), or contrast colour 7 (C7).

Directions:

You should have 133 sts on your needles after the last row of the second clue.

Now, continue as follows:

SECTION 5 (garter stripes):

Always pick up the new colour from underneath to get a neat edge. Join (C5) yarn.

Work rows 1-18 changing colours every RS row as stated in chart.

Then repeat rows 7-18 one more time. You will have 8 garter ridges total in colour (C5).

(20 sts increased = 153 sts total.)

Cut (C5) yarn.

Then work rows 19-24 in (MC) once. (4 sts increased = 157 sts total.)

Cut (MC) yarn.

SECTION 6 (lace trellis, left bias):

Join (C6) yarn.

Work rows 25-36 once. (8 sts increased = 165 sts total)

Cut (C6) yarn. Join (MC) yarn.

Work rows 37-42 in (MC) once. (4 sts increased = 169 sts total)

Cut (MC) yarn.

SECTION 7 (basic fagotting, vertical lace):

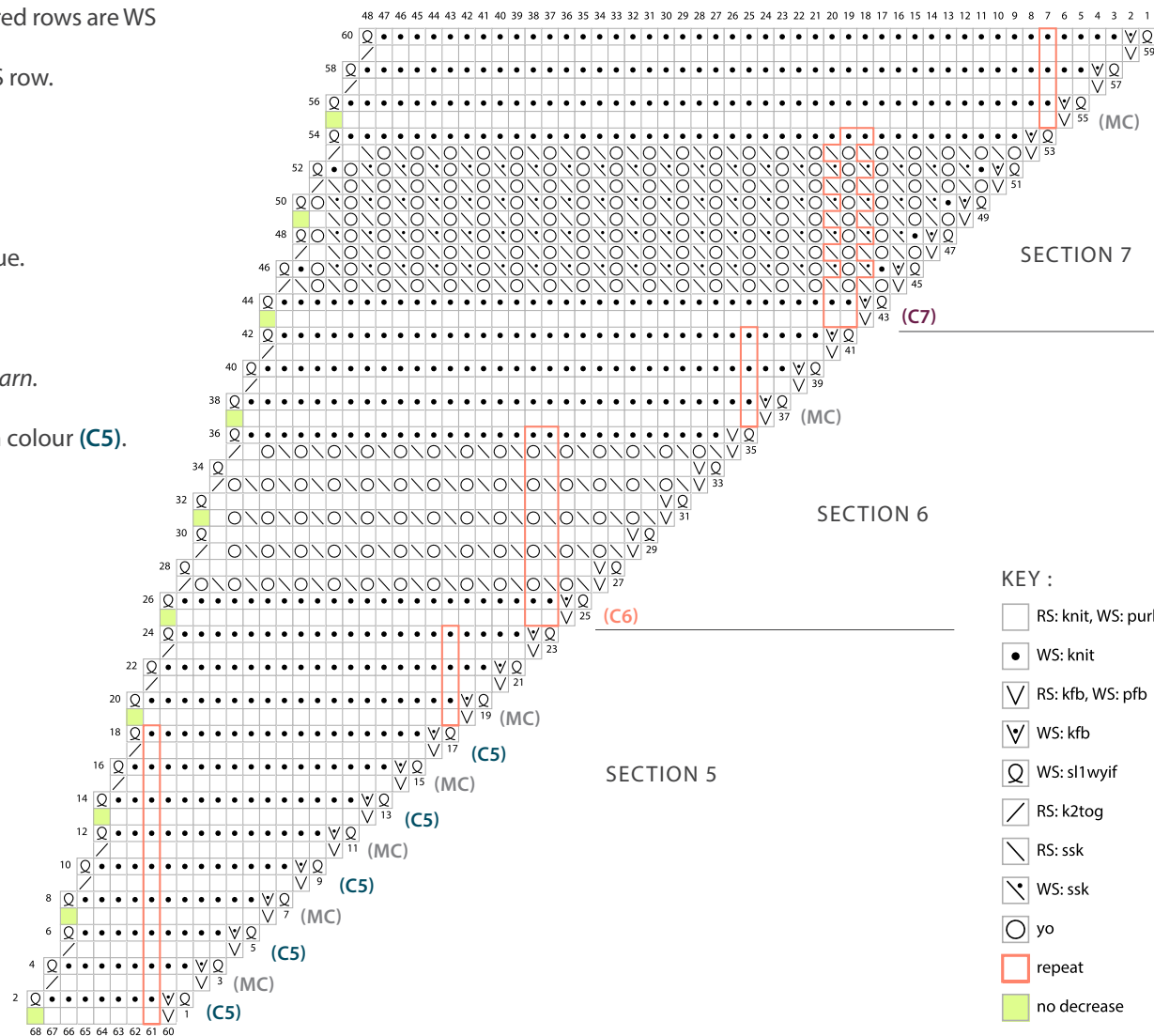
Join (C7) yarn.

Work rows 43-54 once. (8 sts increased = 177 sts total)

Cut (C7) yarn. Join (MC) yarn.

Work rows 55-60 in (MC) once. (4 sts increased = 181 sts total)

Do NOT cut (MC) yarn.



4th Mystery Clue

INSTRUCTIONS FOR OPTION 1 :

This option will create some fun stripes in each CC ending with an eyelet ridge in C8.

This part is only available as written instructions.

The instructions are divided into sections to make the reading easier. Each section is numbered separately. When it says to repeat rows xx please refer to the corresponding rows of the same section.

Work in main colour (MC),
contrast colour 1 (C1), contrast colour 2 (C2), contrast colour 3 (C3), contrast colour 4 (C4),
contrast colour 5 (C5), contrast colour 6 (C6), contrast colour 7 (C7), contrast colour 8 (C8).

Directions: You should have 181 sts on your needles after the last row of the third clue.

Now, continue as follows.

SECTION 8 (short row garter stripes):

You may find it helpful to place some removable markers for this section. These will indicate when to w&t for the contrast colour short rows. It'll also help to know you're still working at the right stitch count without having to double check all the time.

Place them as follows: pm every 20 sts, after last marker will be 21 sts.

Then all CC short rows will be worked as follows: kfb, knit to marker, remove marker, w&t

You won't need to cut your (MC) yarn from now on. And you don't need to pick up the wraps. When you come to them just work that stitch as a regular knit stitch.

Row 1 (MC) (RS): kfb, k4, w&t

Row 2 (MC) (WS): knit to last 2 sts, kfb, sl1wyif

Row 3 (MC): kfb, knit to last wrapped stitch, k5 (= k wrapped st + k4), w&t

Row 4 (MC): knit to last 2 sts, kfb, sl1wyif

Row 5 (MC): kfb, knit to last wrapped stitch, k5, w&t

Row 6 (MC): knit to last 2 sts, kfb, sl1wyif

Join (C1) yarn.

Row 7 (C1): kfb, knit to last wrapped stitch, k5 (= k to next marker, rm), w&t

Row 8 (C1): knit to last 2 sts, kfb, sl1wyif

Cut (C1) yarn.

Row 9 (MC) (RS): kfb, knit to last wrapped stitch, k5, w&t

Row 10 (MC) (WS): knit to last 2 sts, kfb, sl1wyif

Row 11 (MC): kfb, knit to last wrapped stitch, k5, w&t

Row 12 (MC): knit to last 2 sts, kfb, sl1wyif

Row 13 (MC): kfb, knit to last wrapped stitch, k5, w&t

Row 14 (MC): knit to last 2 sts, kfb, sl1wyif

Join (C2) yarn.

Row 15 (C2): kfb, knit to last wrapped stitch, k5 (= k to next marker, rm), w&t

Row 16 (C2): knit to last 2 sts, kfb, sl1wyif

Cut (C2) yarn.

Repeat rows 9-16 with every contrast colour using one after the other for rows 15+16 in the order of their „numbered names“:

contrast colour 3 (C3),

contrast colour 4 (C4),

contrast colour 5 (C5),

contrast colour 6 (C6),

contrast colour 7 (C7),

contrast colour 8 (C8). *You don't need to cut the yarn.*

Now, there will be 21 sts in (MC) remaining after the last CC row (incl. last wrapped stitch).

64 sts increased = 245 sts total

Cross the yarns in the back to carry up the other colour.

Row 17 (MC) (RS): kfb, knit to last wrapped stitch, k5, w&t

Row 18 (MC) (WS): knit to last 2 sts, kfb, sl1wyif

Row 19 (MC): kfb, knit to last wrapped stitch, k5, w&t

Row 20 (MC): knit to last 2 sts, kfb, sl1wyif

Row 21 (MC): kfb, knit to last wrapped stitch, k5, w&t

Row 22 (MC): knit to last 2 sts, kfb, sl1wyif

Row 23 (C8): kfb, knit to last 2 sts, k2tog (= kfb, knit to last wrapped stitch, k4, k2tog)

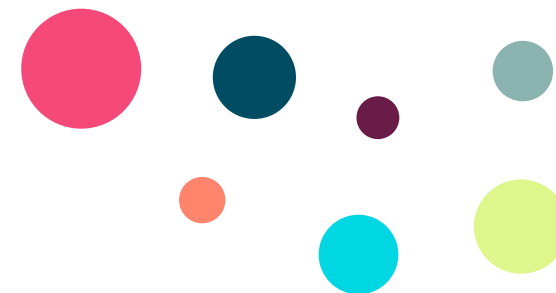
Row 24 (C8): sl1wyif, knit to last 2 sts, kfb, sl1wyif

7 sts increased = 252 sts total

Don't cut (C8) yarn.

Please continue with section 9 on the next page....

4th Mystery Clue



INSTRUCTIONS FOR OPTION 1 (CONT.):

SECTION 9 (garter wedge & eyelet ridge border):

In this section you don't need to cut your yarn. Be sure to cross the yarns in the back to carry up the other colour and always pick up the new colour from underneath to get a neat edge.

In the next row, place 16 markers to indicate the next short rows. This will again help to know where to do the w&t without having to count your stitches every time.

In this section the w&t's will be worked on the WS.

Pick up (MC) yarn.

Row 1 (MC) (RS): kfb, k10, pm, (k15, pm) until last 16 sts, k14, k2tog

Row 2 (MC) (WS): sl1wyif, k14 (= k to first marker), rm, w&t

Row 3 (MC): knit to end of row

Row 4 (MC): sl1wyif, knit to next marker, rm, w&t (= sl1wyif, k to last wrapped st, k15, w&t)

Row 5 (MC): knit to last 2 sts, k2tog

Row 6 (MC): sl1wyif, knit to next marker, rm, w&t

Row 7 (MC): knit to last 2 sts, k2tog

Row 8 (MC): sl1wyif, knit to next marker, rm, w&t

Repeat rows 3-8 four more times, until all markers are removed.

Next RS-Row (MC): knit to end of row

Next WS-Row (MC): sl1wyif, knit to last 2 sts, kfb, sl1wyif

9 sts decreased = 243 sts total

Pick up (C8) yarn.

Row 1 (C8) (RS): kfb, knit to last 2 sts, k2tog

Row 2 (C8) (WS): sl1wyif, knit to last 2 sts, kfb, sl1wyif

1 st increased = 244 sts total

In the next row place 2 markers to indicate the next short rows.

Pick up (MC) yarn.

Row 1 (MC) (RS): kfb, k1, (k80, pm) x2, knit to last 2 sts, k2tog

Row 2 (MC) (WS): sl1wyif, k80 (=k to first marker), rm, w&t

Row 3 (MC): knit to end of row

Row 4 (MC): sl1wyif, k to second marker, rm, w&t (= sl1wyif, k to last wrapped st, k80, w&t)

Row 5 (MC): knit to last 2 sts, k2tog

Row 6 (MC): sl1wyif, knit to last 2 sts, kfb, sl1wyif

+/- 0 sts = 244 sts

Pick up (C8) yarn.

Row 1 (C8) (RS): kfb, knit to last 2 sts, k2tog

Row 2 (C8) (WS): sl1wyif, knit to last 2 sts, kfb, sl1wyif

Row 3 (C8): kfb, [**yo, k2tog**] rep. to last 2 sts, k2

Row 4 (C8): sl1wyif, knit to last 2 sts, kfb, sl1wyif

3 sts increased = 247 sts total

Cut (C8) yarn.

Pick up (MC) yarn.

Row 5 (MC): kfb, knit to last 2 sts, k2tog

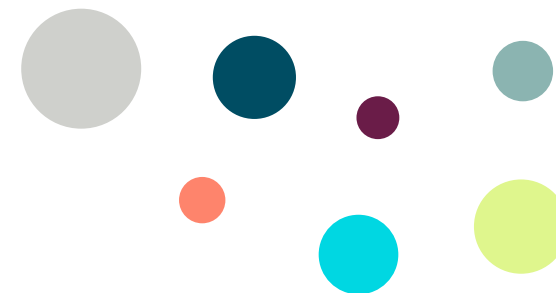
Row 6 (MC): sl1wyif, knit to last 2 sts, kfb, sl1wyif

1 st increased = 248 sts total

Do not cut (MC) yarn. You'll be using it for the bind-off.



Mystery Clue



INSTRUCTIONS FOR OPTION 2 (WRITTEN):

This option will form a wide main colour (MC) border ending with some stripes and an eyelet ridge in (C8).

The instructions are divided into sections to make the reading easier. Each section is numbered separately. When it says to repeat rows xx please refer to the corresponding rows of the same section.

Work in main colour (MC) and contrast colour 8 (C8).

Directions:

You should have 181 sts on your needles after the last row of the third clue.

Now, continue as follows.

You won't need to cut your (MC) yarn from now on.

SECTION 8 (garter):

Row 1 (MC) (RS): kfb, knit to end of row	(+ 1 st)
Row 2 (MC) (WS): sl1wyif, knit to last 2 sts, kfb, sl1wyif	(+ 1 st)
Row 3 (MC): kfb, knit to last 2 sts, k2tog	
Row 4 (MC): sl1wyif, knit to last 2 sts, kfb, sl1wyif	(+ 1 st)
Row 5 (MC): kfb, knit to last 2 sts, k2tog	
Row 6 (MC): sl1wyif, knit to last 2 sts, kfb, sl1wyif	(+ 1 st)
4 sts increased = 185 sts total	

Rows 7-24 (MC): Repeat rows 1-6 three more times.
12 sts increased = 197 sts total

(If you still have lots of (MC) yarn left you could extend this section by repeating rows 1-6 as many times as you like, keeping enough for 7 more ridges in (MC) + the bind off.)

SECTION 9 (garter stripes):

To carry up the other colour cross the yarns in the back at the beginning of each RS row and always pick up the new colour yarn from underneath to get a neat edge.

Join (C8) yarn (on first repeat only).

Row 1 (C8) (RS): kfb, knit to end of row	(+ 1 st)
Row 2 (C8) (WS): sl1wyif, knit to last 2 sts, kfb, sl1wyif	(+ 1 st)
Row 3 (MC): kfb, knit to last 2 sts, k2tog	
Row 4 (MC): sl1wyif, knit to last 2 sts, kfb, sl1wyif	(+ 1 st)
Row 5 (MC): kfb, knit to last 2 sts, k2tog	
Row 6 (MC): sl1wyif, knit to last 2 sts, kfb, sl1wyif	(+ 1 st)
4 sts increased = 201 sts total	

Rows 7-18: Repeat rows 1-6 two more times.
8 sts increased = 209 sts total

Pick up (C8) yarn.

Row 19 (C8) (RS): kfb, knit to end of row	(+ 1 st)
Row 20 (C8) (WS): sl1wyif, knit to last 2 sts, kfb, sl1wyif	(+ 1 st)
Row 21 (C8): kfb, [yo, k2tog] rep. to last 2 sts, k2tog	
Row 22 (C8): sl1wyif, knit to last 2 sts, kfb, sl1wyif	(+ 1 st)
Cut (C8) yarn.	

Pick up (MC) yarn.

Row 23 (MC): kfb, knit to last 2 sts, k2tog	
Row 24 (MC): sl1wyif, knit to last 2 sts, kfb, sl1wyif	(+ 1 st)
4 st increased = 213 sts total	

Do not cut (MC) yarn. You'll be using it for the bind-off.

4th

Mystery Clue

INSTRUCTIONS FOR OPTION 2 (CHARTED):

This option will form a wide main colour (MC) border ending with some stripes and an eyelet ridge in (C8).

Work in main colour (MC) and contrast colour 8 (C8).

Directions:

You should have 181 sts on your needles after the last row of the third clue.

Now, continue as follows.

You won't need to cut your (MC) yarn from now on.

SECTION 8 (garter):

Work and repeat Row 1-6 (MC) four times.

16 sts increased = 197 sts total

(If you still have lots of (MC) yarn left you could extend this section by repeating rows 1-6 as many times as you like, keeping enough for 7 more ridges in (MC) + the bind off.)

SECTION 9 (garter stripes):

To carry up the other colour cross the yarns in the back at the beginning of each RS row and always pick up the new colour yarn from underneath to get a neat edge.

Join (C8) yarn.

Work and repeat Rows 7-12 three times using (MC) and (C8) as stated in the chart.

12 sts increased = 209 sts total

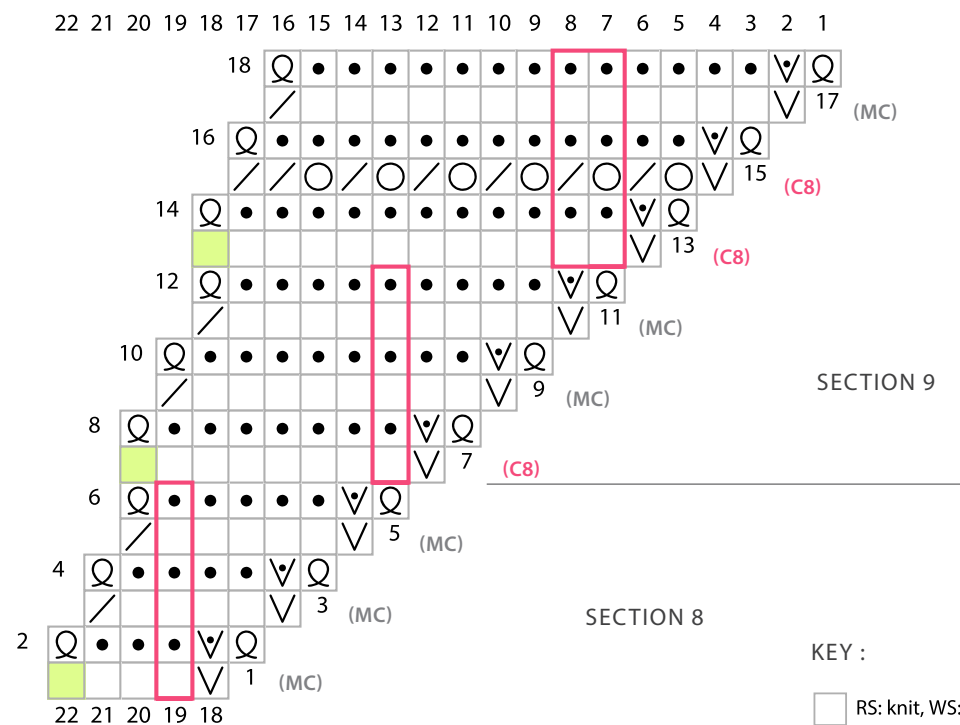
Work Rows 13-16 (C8) once.

Cut (C8) yarn.

Then work Row 17+18 (MC) once.

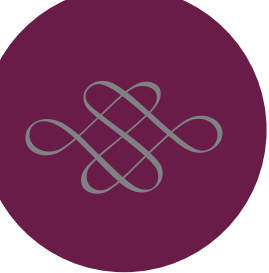
4 st increased = 213 sts total

Do not cut (MC) yarn. You'll be using it for the bind-off.



KEY :

- RS: knit, WS: purl
- WS: knit
- WS: kfb
- WS: sl1 wyif
- RS: k2tog
- yo
- repeat
- no decrease



Finishing

BIND-OFF:

There are two different bind-off options. You can either work a classic lifted bind-off for a clean finish or add a more playful picot bind-off. Choose the one you like best.

CLASSIC LIFTED BIND-OFF:

Make sure you're not working this bind-off too tight, if you like go up a needle size.

Work as follows (MC):

k1, [k1, lift first st over second] rep. to last 2 sts, k2tog, lift first st over second.

PICOT BIND-OFF:

Bind off all remaining stitches loosely with a picot bind-off.

CO = cast on new sts using knitted cast-on

BO = bind off sts using classic lifted bind-off

Work as follows (MC):

CO3, BO10, [CO2, BO10, sl st back to LH needle] rep. to last st, CO2, BO2

(If you've worked option 2 for Clue 4 work as follows:

[CO2, BO6, sl st back to LH needle] rep. to last st, CO2, BO2)

FINISHING:

Cut your (MC) yarn. Pull yarn end through to secure and weave in all your yarn ends.

I highly recommend you wash & gently block your shawl to the shape shown in the schematic as this will even out the stitches, open up the lace and give the fabric a nice drape.

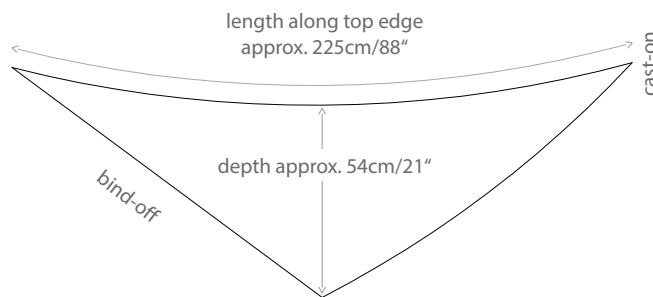
Have fun wearing your new shawl!

SHAPE & MEASUREMENTS:

Take It All is a triangular, sideways, bias knit shawl with a curved top edge.

The construction starts with just a few stitches at the right tip, then works its way across to the left edge creating the almost symmetrical triangular shape by increasing at the top edge and decreasing at the left edge. A band, gently shaped with short-rows, creates the striped border (Option 1).

The schematic shows the finished shape and the measurements when using approx. 760 yds / 840 m of fingering weight yarn.



ACKNOWLEDGEMENTS:

A huge, heartfelt thank you to my wonderful testers who made this pattern possible by providing their invaluable help, feedback and support!

Ravelry-ID's: xstitch, knittingnoodler, gypsythedog, fager, HeleenK, wireknitter

I hope you enjoyed the pattern and the KAL!

All the best,

Lisa



Photo Gallery

