

Sypha



Use the hashtag #syphamkal to share your project.

Pattern, pictures and notes © Audrey Borrego. This pattern is for personal use only.

Yarn :

You will need three colours of fingering weight yarn in the following amounts :

MC : 600 meters – 655 yards

CC1 : 400 meters – 440 yards

CC2 : 100 meters – 110 yards

The sample is knit with Knitting for Olive Merino in Sand (MC), Dusty Violet (CC1) and Dark Ocher (CC2).

Needles :

3 mm (US 2.5) circular needles with appropriate cable length to knit in the round (60 cm – 24" maximum) or magic loop
or size required to get gauge

Gauge :

27 sts x 30 rnds per 10 cm – 4" in stranded knitting after blocking

Note that a different gauge will affect size and yarn usage.

Size :

128 cm – 50 1/2" circumference

25 cm – 9 3/4" width

Notions :

2 different stitch markers, tapestry needle and scissors

Crochet hook of the same size as your needles

Scrap yarn for the provisional cast-on and to place sts on hold

A spare needle for the kitchener stitch

Row counter recommended

Techniques used :

Provisional cast-on with a crochet hook

Two colours stranded knitting in the round with floats to catch

Kitchener stitch

Pattern includes charted instructions

Reading Charts :

When knitting in the round, always read the Chart from right to left.

Colourwork :

Catching floats : in fingering weight, you can catch floats when skipping more than 7 stitches. You may do it more often if you prefer, just make sure not to catch a float in the same place in two consecutive rounds.

Colour dominance : CC will form the motifs while MC will be the background colour. To have consistent colour dominance : hold CC to the left and always carry it under MC without twisting the strands.

You may notice that your fabric is rather irregular prior to blocking. This is common even amongst experience colourwork knitters, especially with a design with many irregular floats to catch. Do not let it bother you because as long as you are using a wool-based yarn, blocking will massively improve this.

Abbreviations :

- st(s) : stitch(es)
- rnd : round
- BOR : beginning of round
- pm : place marker
- MC : main colour
- CC1 : contrast colour 1
- CC2 : contrast colour 2

Cast-on and set-up :

With the [crochet method](#), provisionally cast-on 134 sts on scrap yarn.

(Provisional Cast-On using a crochet hook by Very Pink Knits)

Knit across the sts with MC. Being careful not to twist the sts, join to work in the round and PM for BOR.

PM also after 67 sts for the side of the cowl.

Section 1 :

We start with Fire, as the element underlying beneath our world.

It burns and builds foundations, shown in the small triangular spikes settling in around the motif, a sharp but sturdy edge.

Though strong and destructive, it is not without beauty. Flames unfurl in flowy, wing-like patterns.

The center piece is reminiscent of a Phoenix, emerging from a roaring chamber of sparks.

Work Chart A from pages 5-6, making 2 repeats on each rnd.

Section 2 :

Earth sprouts from the ground, stems undulating, plants growing.

It blends the rough power and structure of rocks and trunks with the fine delicacy of leaves.

Small acorns move around the frame, looking towards the flowing symbol of growth and balance.

Work Chart B from pages 7-8, making 2 repeats on each rnd.

Section 3 :

Water feeds both above and below. Iconic small waves rush around, peaking and swirling in a continuous cycle.

Curls emerge like larger rolls of foam, growing proudly and splashing drops that will later evaporate.

Work Chart C from pages 9-10, making 2 repeats on each rnd.

Section 4 :

Drops of water flows and turn to Air, feeding the sky in clouds. Feathers swirl around the frame, pushed by gushes of wind.

The floating symbols oscillate between fans and crowns, elevating the entire motif upwards.

The atmospheric lightness of this motif brings consecration, arching high towards the final element.

Work Chart D from pages 11-12, making 2 repeats on each rnd.

Section 5 :

Space is emptiness, and possibilities. As the last marks of air gradually disappear, we see a vast dotted field.

Sun rays at the bottom launch the beginning of its system, with the orbital arcs of Mercury, Venus, Earth and Mars looming above.

Right above Earth are the moon and its phases. Everywhere, small and larger stars peak through.

Spirals represent galaxies, our final symbol closing the loop.

Work Chart E from pages 13-14, making 2 repeats on each rnd.

Finishing :

Cut yarn, leaving a tail of MC about three times the cowl's circumference. Place sts on hold.

Weave in all ends on the inside and gently block the cowl.

Once completely dry, place the end sts back on the needles.

Unravel the provisional crochet cast-on and place the beginning sts on another set of needles.

Being careful not to twist the cowl unless you want a moebius effect, graft the sts together using the [kitchener stitch](#).

(Kitchener stitch tutorial by Very Pink Knits)

CHART A

Part 1

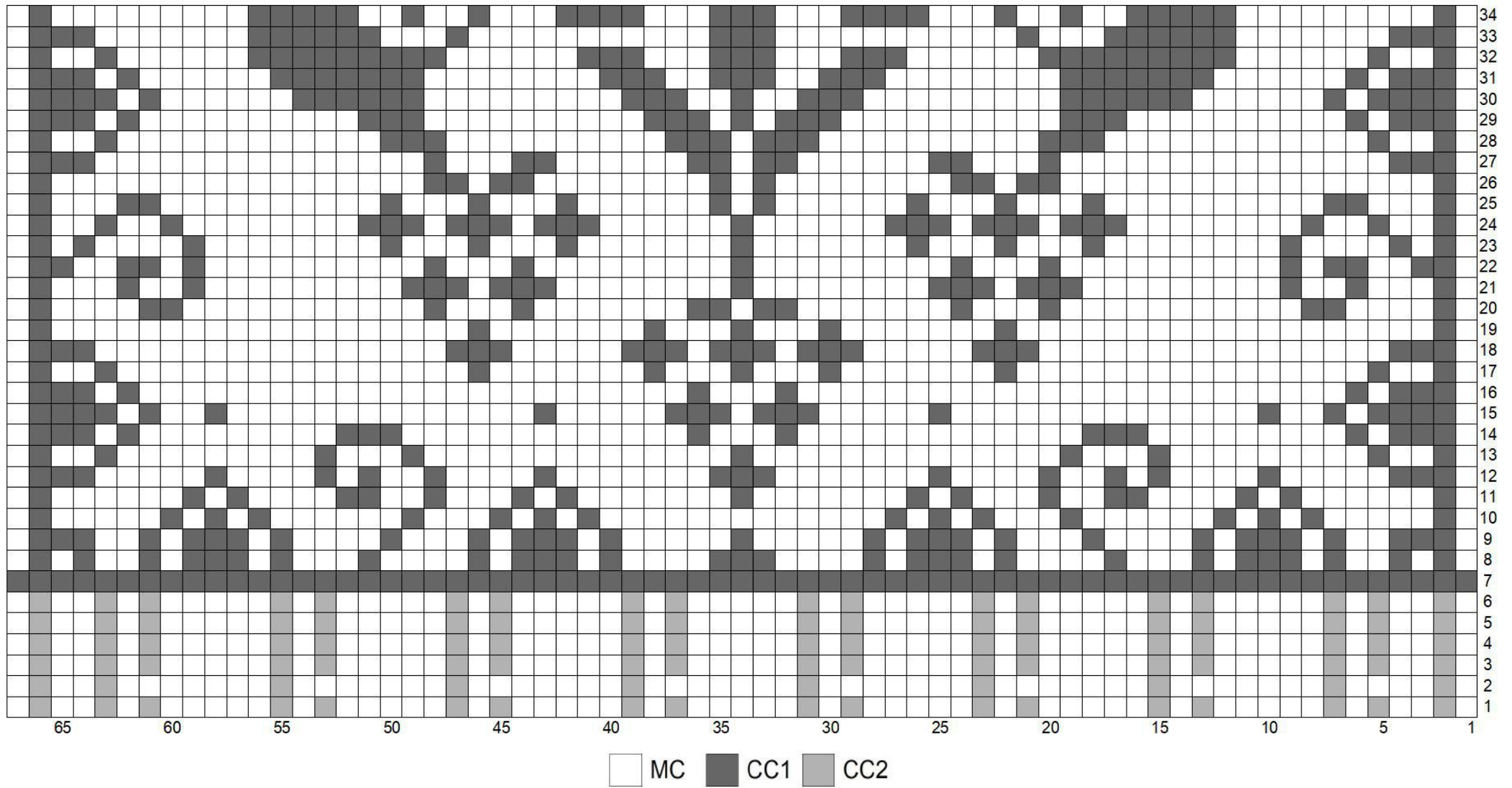


CHART A

Part 2

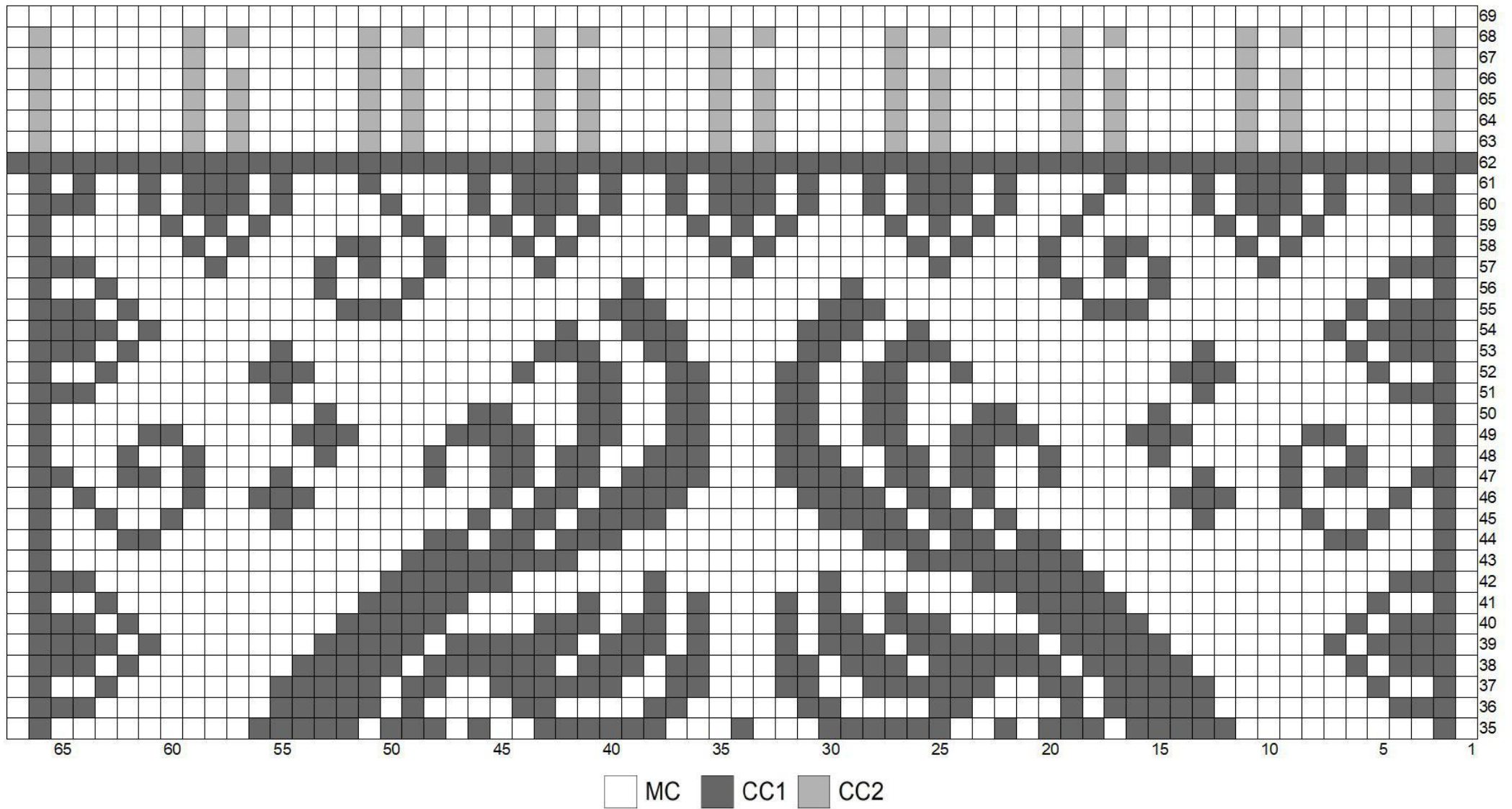


CHART B

Part 1

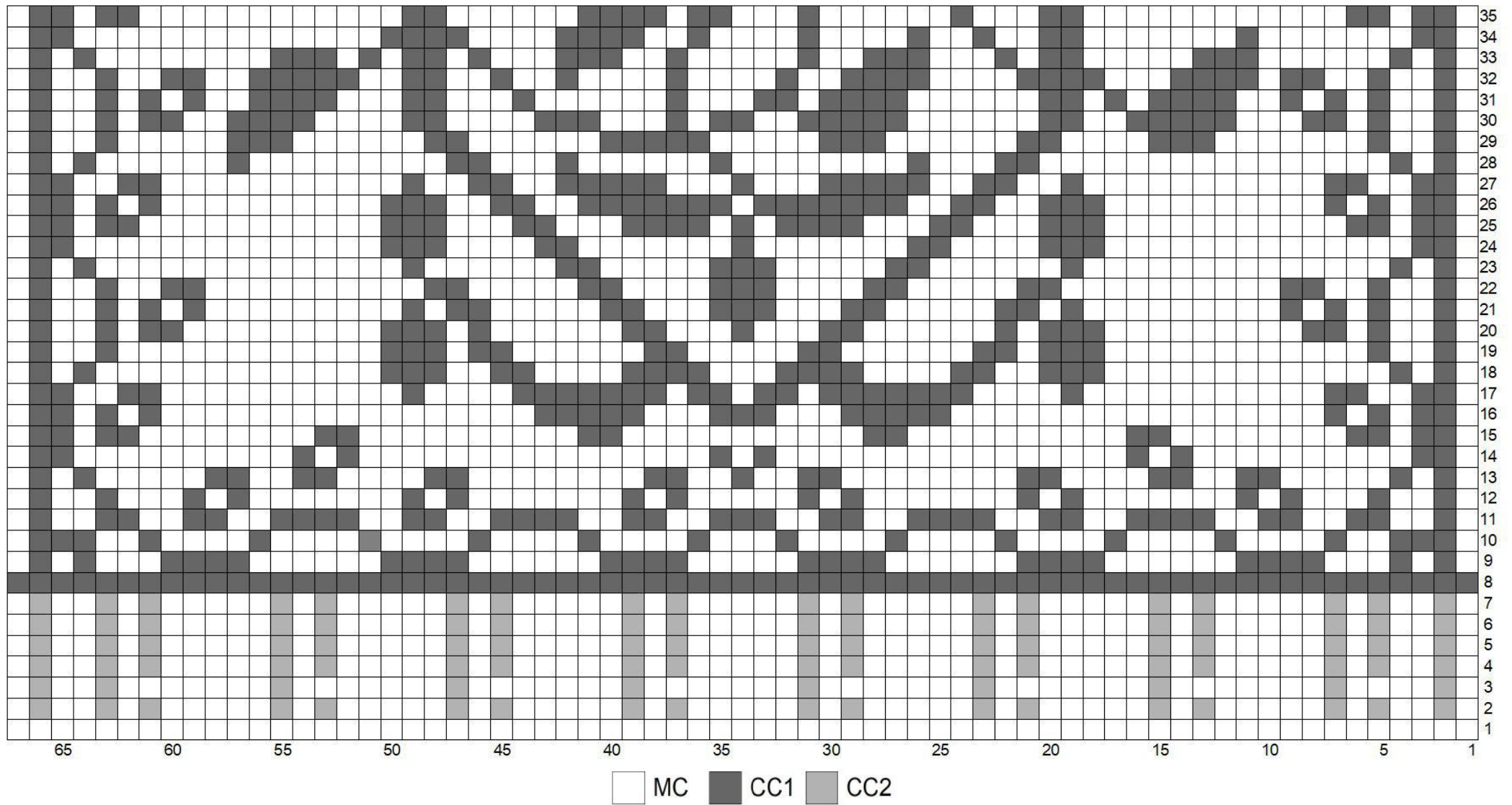


CHART B

Part 2

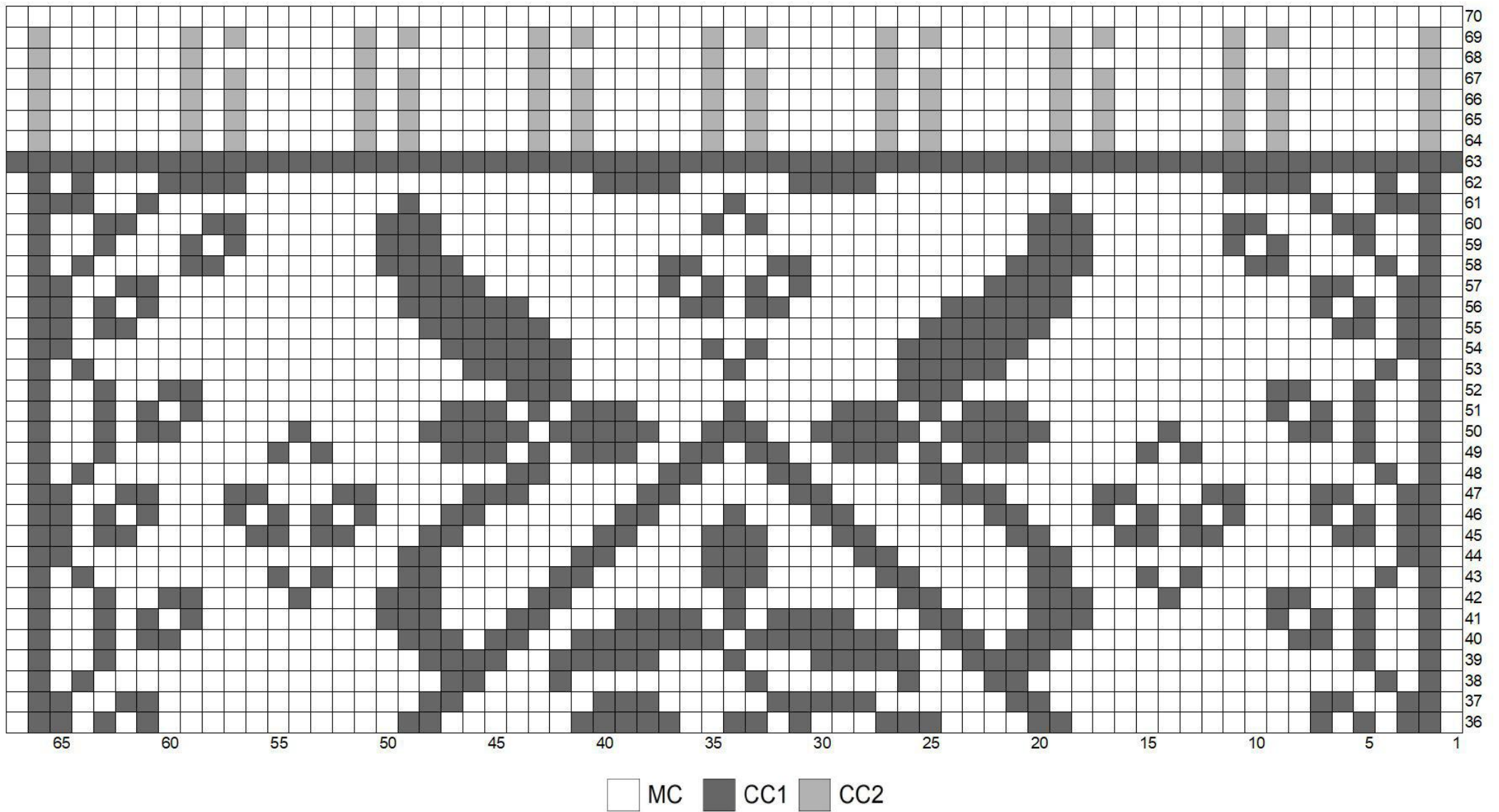


CHART C

Part 2

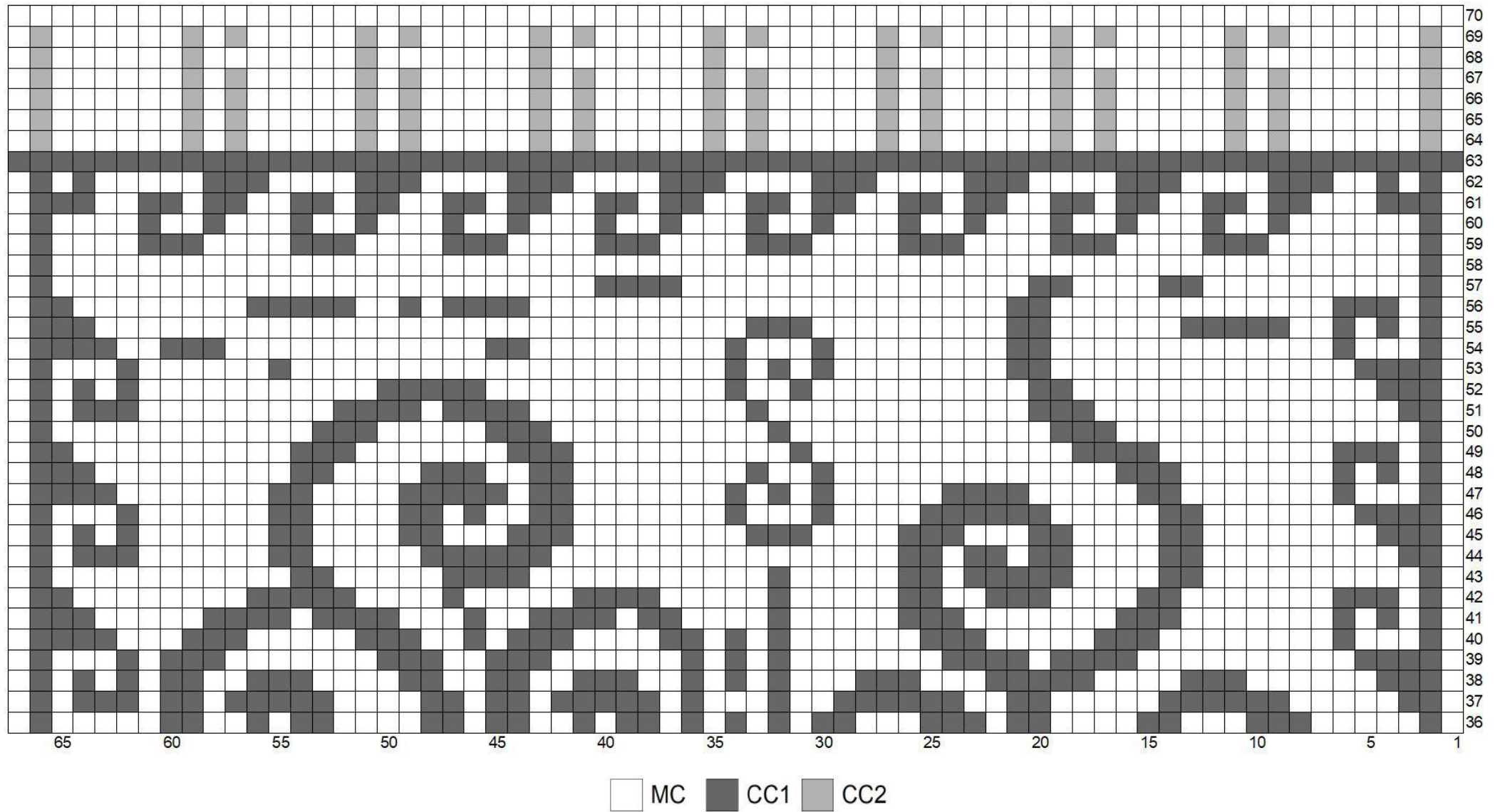


CHART D

Part 1

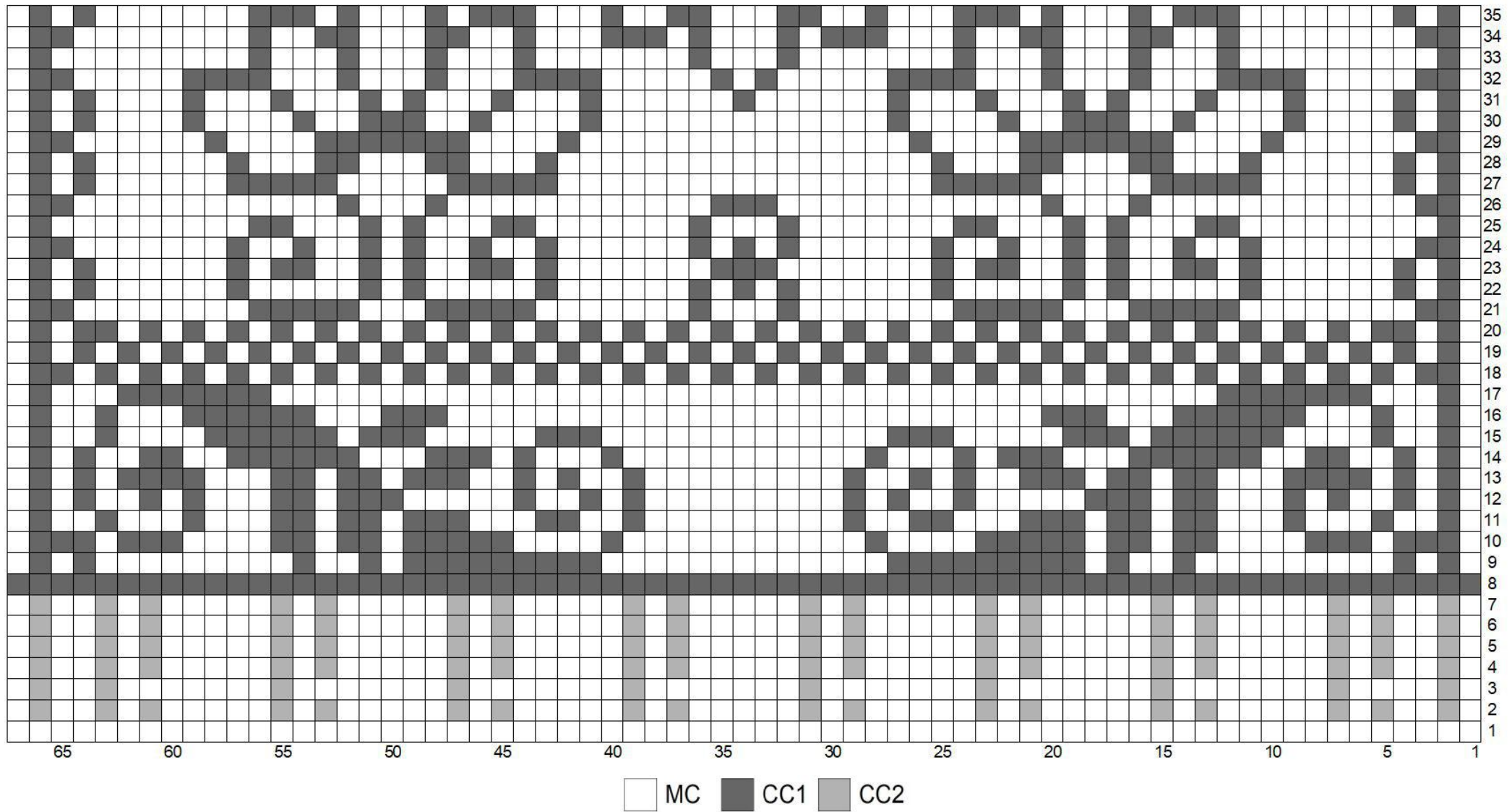


CHART D

Part 2

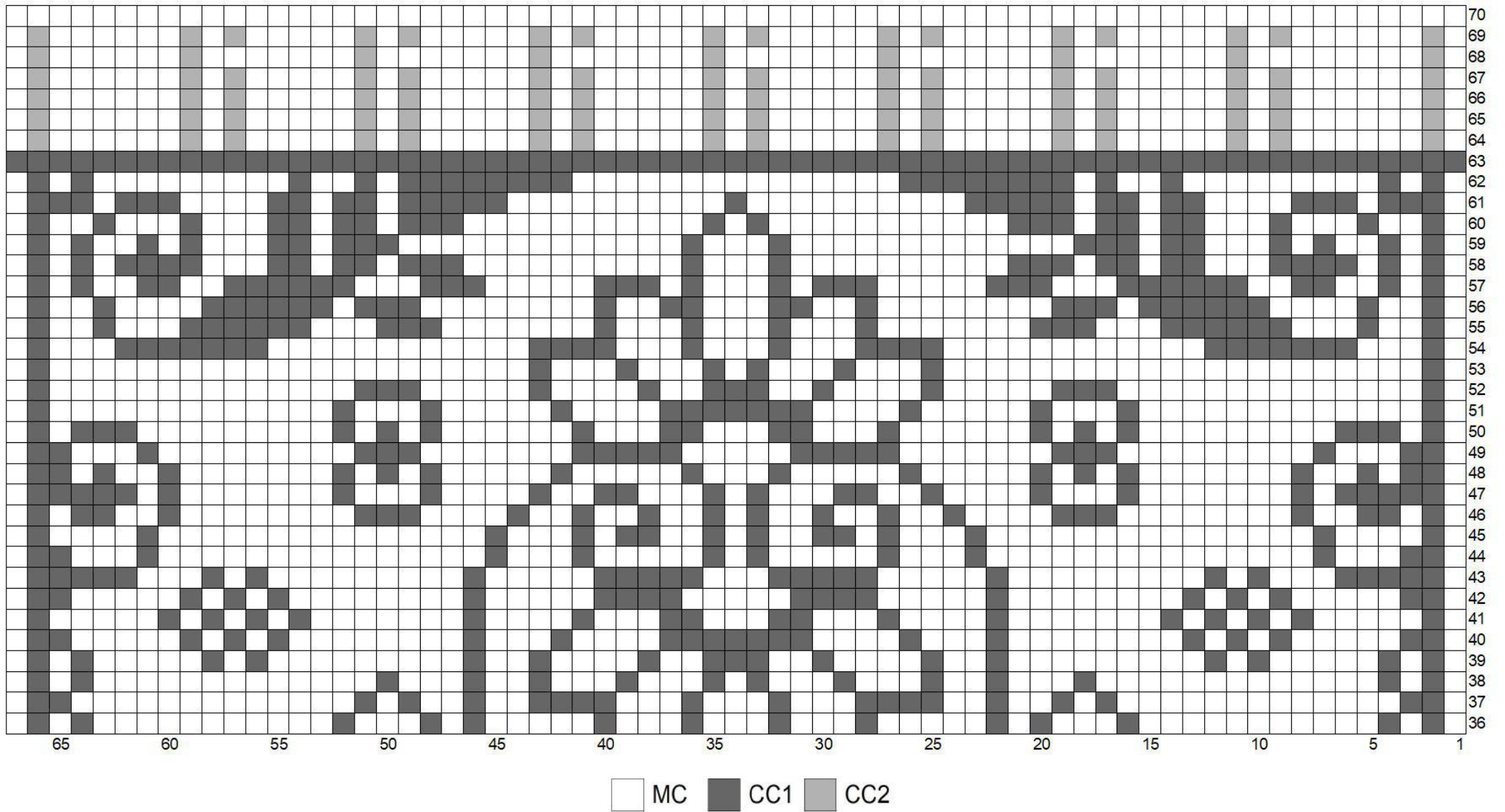


CHART E

Part 1

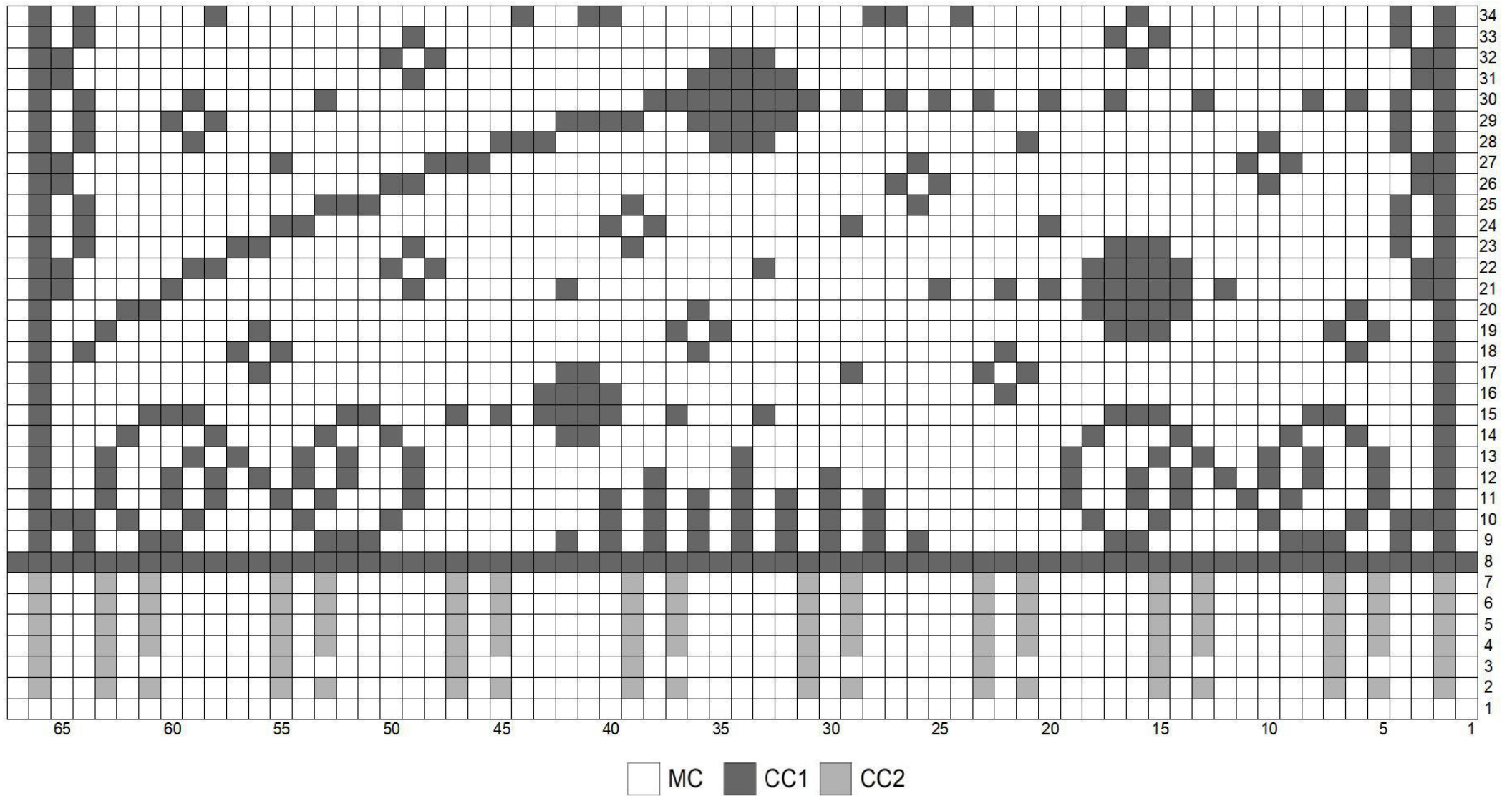
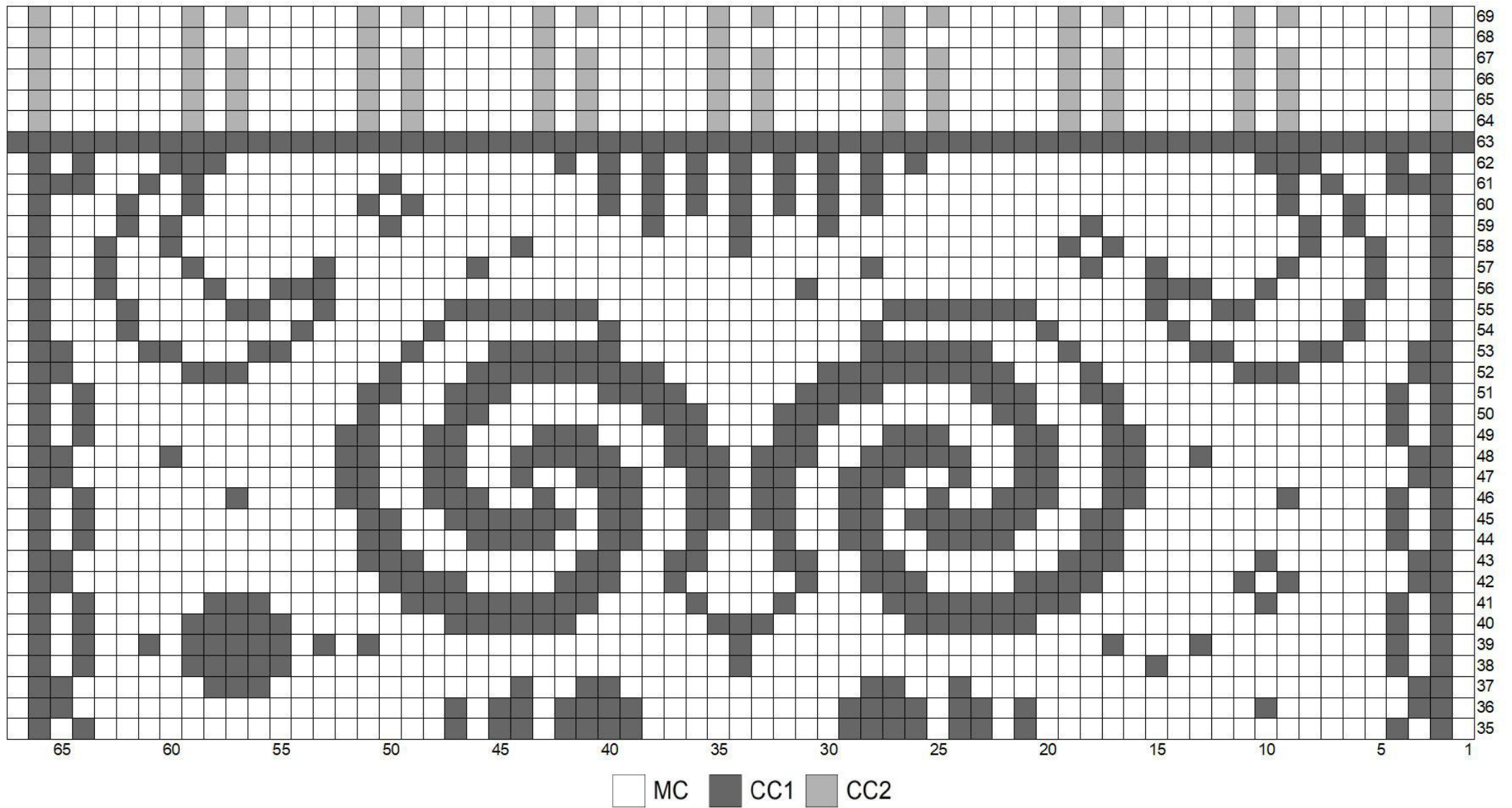


CHART E

Part 2

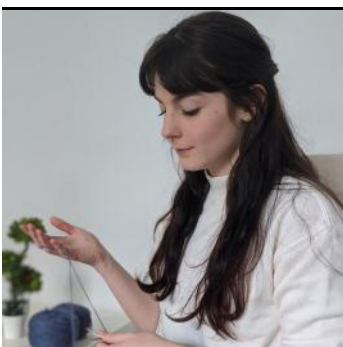


Thank you

for choosing a Yarnflakes pattern !

I hope you enjoyed your project and will love the finished piece. If you have any questions or suggestions, please contact me on Ravelry (Yarnflakes).

I love to see you knit my designs. If you want to share pictures of your progress you can join me on my Ravelry group : www.ravelry.com/discuss/yarnflakes and tag me on Instagram @yarnflakes.



Find more designs :
www.ravelry.com/designers/audrey-borrego
www.payhip.com/yarnflakes

Patreon Yarnflakes

Instagram @yarnflakes
Ravelry @Yarnflakes