

Sweetheart Mitts



SIZE

Small:Medium:Large, for hand circumferences of 16½:19:21½ cm (6½:7½:8½"). If between sizes make the smaller size.

Finished measurements: 8¼:9½:10¾cm (3¼:3¾:4¼") wide by 21½ cm (8½") long from the top of the glove to the end of the lace points in the cuff.

MATERIALS

Approximately 50g each (200 metres/220 yards each) of any even 4ply/fingering weight yarn in two shades. The pictured sample used hand-

died 'Merino Sock 100%' from The Yarn Yard in 'Rice Bowl', and 'Peach'.

NEEDLES AND NOTIONS

2.25mm/US 1 and 2.75mm/US 2 needles (or size required to achieve the specified tension) for your preferred method of small diameter circular knitting; either 2 medium length circulars, 1 long circular (for magic loop method) or a set of DPNs. Darning/yarn needle.

TENSION/GAUGE

After blocking 36 sts and 38 rounds per 10cm/4" in stranded pattern knitted on the larger

Instructions

MAIN HAND

With the larger needle use a provisional method (eg crochet provisional) to cast on 60(68:76) sts in CC. Join for working in the round and knit 1 round in CC.

Leaving CC attached, join in MC and knit 1 round in MC.

Now commence the stranded pattern, starting with line 1 of Chart A (Main Hand). Work across the chart twice in each round, knitting the sts for your size as indicated in the chart key.

After completing 8 rounds of the charted pattern commence the thumb gusset..

THUMB GUSSET

In all rounds work across Chart A once, commencing with line 9. Then knit the first 1(3:3) sts of Chart A. Then knit across Chart B (Thumb

Gusset), commencing with line 1. Then knit across Chart A again, commencing from st column 11(9:9).

Work the charted increases in MC.

Lines 1–16 of Chart A form a pattern repeat. So, after the round in which you follow line 16 of Chart A, return to line 1.

After completing line 28 of the thumb gusset, remove the gusset sts and cast on new sts in the next round as follows:

Knit once across line 5 of Chart A. Then knit the first 1(3:3) sts of Chart A. Remove the next 21 sts (the thumb gusset sts) and place them onto waste yarn. Then use a provisional method to cast on 5 sts in the working MC yarn. Take care to cast on the sts so that they sit snugly next to the sts you have just knitted. Finally, knit across Chart A again, commencing from st column 11(9:9), and keeping the tension tight for the first few sts. 60(68:76) sts

TOP HAND

Continue in pattern from line 6 of Chart A. Stop when you have completed 3½ repeats of the Chart A pattern in the main hand, ending with a line 9 of pattern.

Leaving both yarns attached, knit a round in MC. Then break off MC, leaving a short tail for weaving in later.

Working in CC with the smaller needle, knit 1 round plain, then work 5 rounds of k1, p1 rib.

Cast off using the tubular cast-off/bind-off method as follows:

Round 1: *sl1 knitwise wyib, p1; repeat from * to end.

Round 2: *k1, sl1 purlwise wyif; repeat from * to end.

Divide the sts from the round onto separate needles so that all the knits are on 1 needle/set of needles, and all the purls are on a different needle/set of needles.

Break off the yarn leaving a 60cm/24" tail. Thread this onto a darning/yarn needle. Holding the purl sts behind the knits, graft the 2 sets of sts together using kitchener stitch. Maintain a loose tension throughout.

LACE CUFF

Place the sts from the first provisional cast-on onto your larger needle(s). If necessary pick up an extra st to make 60(68:76) sts. Join in MC and work a set-up round as follows, following the instructions for your chosen size:

Small size: knit

Medium size: k9, m1f, [k17, m1f] x3, k8. (72 sts)

Large size: k5, m1f, [k10, m1f, k9, m1f] x3, k10, m1f, k4. (84 sts)

Now follow either Chart C (Lace Cuff) or the written instructions below to knit the lace pattern for the cuff, working all alternate rounds (even-numbered rounds) in plain knit.

Round 1: *k10, k2tog, yo; repeat from * to end.

Round 2 and all even-numbered rounds: knit.

Round 3: *skp, k7, k2tog, yo, k1, yo; repeat from * to end.

Round 5: *skp, k5, k2tog, yo, k3, yo; repeat from * to end.

Round 7: *skp, k3, [k2tog, yo] x2, k1, yo, skp, yo; repeat from * to end.

Round 9: *skp, k1, [k2tog, yo] x2, k3, yo skp, yo; repeat from * to end.

Round 11: *sk2p, [yo, k2tog] x2, yo, k1, [yo, skp] x2, yo; repeat from * to end.

After working Round 11 break off the MC yarn. Leaving a short tail for weaving in later. Join in the CC yarn and cast (bind) off loosely as follows:

1 st at a time, sl2 knitwise to the working (right-hand) needle, *then return both sts from the working to the passive needle (with reversed mount) and knit them together tbl, sl the next st knitwise; repeat from * until all sts have been cast off, including the last yo of Round 11. Break off the yarn leaving a 15cm/6"tail. Thread this onto a darning/yarn needle and pull it through the remaining st, then take it under the first st from the cast-off, then back into the last st from the cast-off.

THUMB

Place the 21 sts from the waste yarn and 6 provisional sts from above the thumbhole onto the smaller needle(s). (27 sts)

Join in the CC yarn and continue as follows:

Round 1: k to the last 2 sts, k2tog. (26 sts)

Rounds 2-6: k1, p1; repeat from * to end.

Work a tubular cast-off (bind-off), following the instructions given for casting off the top of the hand.

FINISHING

Weave in all ends on the inside of the mitt, then block the mitt to the dimensions given on page 55. Soak and pin out the gloves to shape until thoroughly dry. Take extra care to evenly pull out and pin the points of the lace cuff.

Repeat all instructions to make the 2nd mitt.

CHART A—MAIN HAND

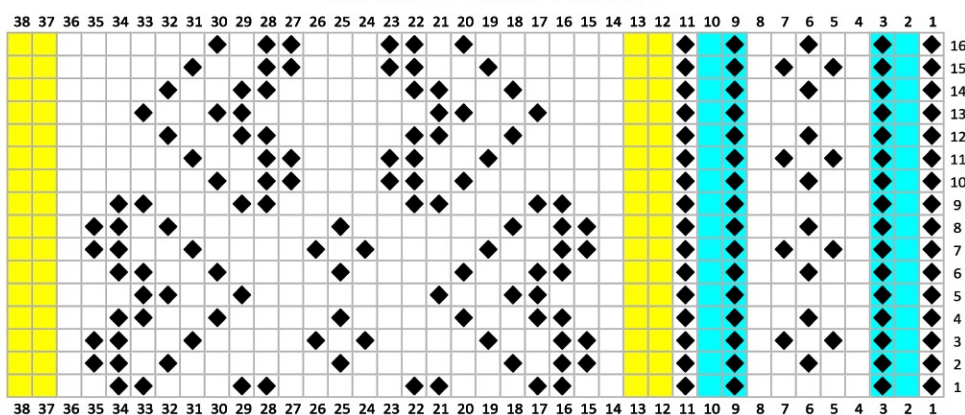
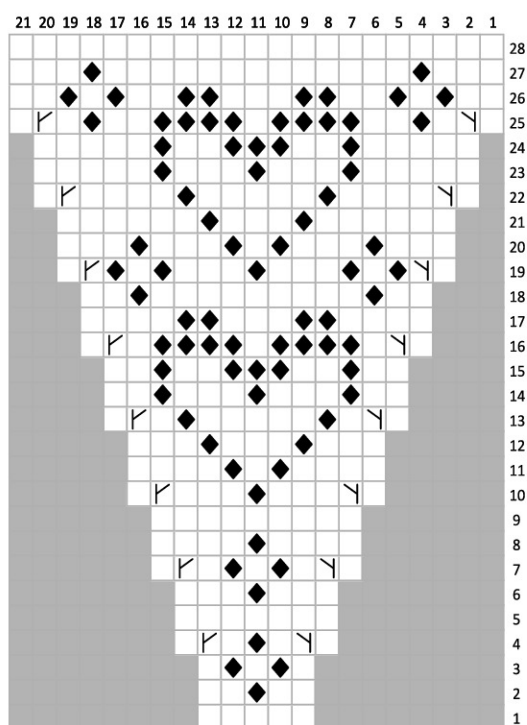



CHART B—THUMB GUSSET



 medium and large sizes only


 large size only

CHART C—LACE CUFF

