

Stranded Northern Winter Beanie



A beanie featuring Santa Claus and three of his reindeer, flying through a snowy night as a bear and a fox roam among the trees and snowmen.

Knitted in the round this is an easy pattern if you already know how to knit stranded colorwork and this pattern assumes that you do know how to knit stranded colorwork. If you have not knitted stranded colorwork before then this is an experienced level pattern.

There are some very long floats so it is important that the floats be caught every 3 stitches. Be sure to catch them in different places so that they don't line up over several rounds, as this will show as a line on the front side. If you work stranded knitting with the yarn held Continental style in the left hand, and English style in the right hand, then the following video has good instructions for catching the floats with either style.

https://www.youtube.com/watch?v=3SLeMVIhmgo&ab_channel=Fiber%2CFlossandFictionPoCCast



Wrong side showing floats caught every 3 stitches.

Instructions are given for head sizes 18" (46 cm), 21" (53 cm), and 23" (58 cm) as follows 18", (21", 23") These correspond to child, small adult and medium-large adult sizes.

For any questions, contact JoansGarden on Ravelry or email JoansGarden1@gmail.com.

Yarn:

Fingering weight yarn.

SC: (sky color), CC: (contrast color) The sample was knitted with Happy Sheep Magic Sock Wool.

Size 18" (46 cm), SC 70 yds (64 m), CC 55 yds (50 m)

Size 21" (53 cm), SC 83 yds (76 m), CC 61 yds (56 m)

Size 23" (58 cm), SC 116 yds (106 m), CC 77 yds (70 m)

Needles:

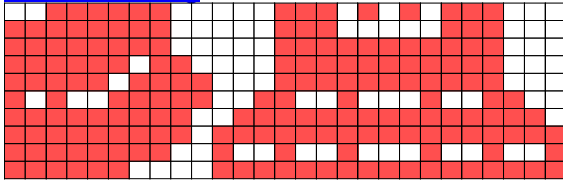
- ❖ 16" (41 cm) circular needle - recommended is US size 2 (2.75 mm), but use whatever size you need to get the correct gauge.
- ❖ Set of dpns (double point needles) in the same size.

Gauge:

Your gauge will be different over stranded colorwork than it is over stockinette. It is recommended that you take the time to do a small swatch of the pattern before you start on the beanie.

The pattern of 36 rows cannot be adjusted for height, and so the final height of the beanie is determined by the number of rows in the crown. The band is very short in order that the beanie not be too tall. It will curl while being knitted but lays flat once blocked.

The following pattern can be used for a gauge swatch. Knit this in rows rather than rounds, or try [swatching for circular knitting](#)



Gauge needed is 26 sts and 34 rows / 4" (10 cm) over **blocked** stranded colorwork.

Abbreviations

CO: cast on

BO: bind off

rep *: Repeat the instructions following the *

st(s): stitch (stitches)

pw: purlwise

wyib: with yarn in back

X: times - the number of times to repeat a step

Stitches

K: (knit), and P: (purl)

Kfb: Knit into the front and back of the st, an increase of 1 st.

K2tog: knit the next 2 sts together, and P2tog: purl the next 2 sts together

Sl: slip

Techniques

Block hat: Wet it down, roll in a towel to remove excess water, and then place over a styrofoam head, bowl or balloon to dry.

Duplicate Stitch: Duplicate stitch is just embroidering over the stitches that are already in your knitting. Don't pull the embroidery yarn too tightly or the work will begin to pucker but don't leave it too loose either. It needs to sit on top of the stitch being duplicated, hiding as much of it as possible.

Stranded Colorwork: Stranded Colorwork knitting, also known as Fair Isle knitting, is a technique for working two (or more) colors of yarn in the same row. Carry the unused color across the back, catching it in the working color at least every 3 sts - long yarn carries will get snagged in your fingers in the finished object.

Make sure that you don't pull too tightly when you change colors. If your stranding in the back is too tight, it creates puckers on the front of the work.

Changing colors can be done by carrying both colors on the same hand, or by knitting with English and Continental techniques, a different color in each hand. One color will always be more prominent on the right side while the other recedes to the background. This effect is referred to as *color dominance*. If you hold one color in each hand, the easiest way to manage color dominance is to hold the dominant color in your left hand or keep it to the left if carrying both colors on the same hand.

Choosing colors for colorwork knitting: Sometimes our eyes see colors as quite different but once they are knitted together, the pattern does not show up well. One way to test whether a color combination will work is to photograph the yarns in grayscale. If the grays are similar in density then it will not be a good combination.

Beanie

Band

Using the 16" circular needle and **CC** cast on 108 (124, 140) sts and join in the round being careful not to twist. Place marker for start of round. Begin rib pattern:

Rounds 1-2: *(K1, P1) rep * to end of round

Round 3: P2tog around

Round 4: Kfb around

Round 5: *(K1, P1) rep * to end of round

Round 6: On this round, slip all the knits pw wyib, and knit all the purls.

18" (46 cm) size: (work17, Kfb) 6X (114 sts)

21" (53 cm) size: (work11, Kfb) 10X, work4 (134 sts)

23" (58 cm) size: (work13, Kfb) 10X (150 sts)

Top

It is recommended that CC be the dominant color

Work the Northern Winter Chart (last page) rounds 1-36.

Begin Decreases:

Continue working with SC.

Change to dpns when stitches are too few to fit on the circular needle.

18" (46 cm) size:

Knit 1 round

Go to Round 12

21" (53 cm) size:

Knit 1 round

Next Round: (K65, K2tog) 2X (132 sts)

Go to Round 7

23" (58 cm) size: start at Round 1.

Round 1: Knit

Round 2: (K23, K2tog) 6X (144 sts)

Round 3: Knit

Round 4: (K22, K2tog) 6X (138 sts)

Round 5: Knit

Round 6: (K21, K2tog) 6X (132 sts)

Round 7: Knit

Round 8: (K20, K2tog) 6X (126 sts)

Round 9: Knit

Round 10: (K19, K2tog) 6X (120 sts)

Round 11: (K18, K2tog) 6X (114 sts)

Round 12: (K17, K2tog) 6X (108 sts)

Round 13: (K16, K2tog) 6X (102 sts)

Round 14: (K15, K2tog) 6X (96 sts)

Round 15: (K14, K2tog) 6X (90 sts)

Round 16: (K13, K2tog) 6X (84 sts)

Round 17: (K12, K2tog) 6X (78 sts)

Round 18: (K11, K2tog) 6X (72 sts)

Round 19: (K10, K2tog) 6X (66 sts)

Round 20: (K9, K2tog) 6X (60 sts)

Round 21: (K8, K2tog) 6X (54 sts)

Round 22: (K7, K2tog) 6X (48 sts)

Round 23: (K6, K2tog) 6X (42 sts)

Round 24: (K5, K2tog) 6X (36 sts)

Round 25: (K4, K2tog) 6X (30 sts)

Round 26: (K3, K2tog) 6X (24 sts)

Round 27: (K2, K2tog) 6X (18 sts)

Round 28: (K1, K2tog) 6X (12 sts)

Round 29: K2tog 6X (6 sts)

Break yarn and thread through remaining 6 sts.

Tie off on inside.

Sew in all ends.

Block hat

Embroider faces and arms on the snowmen

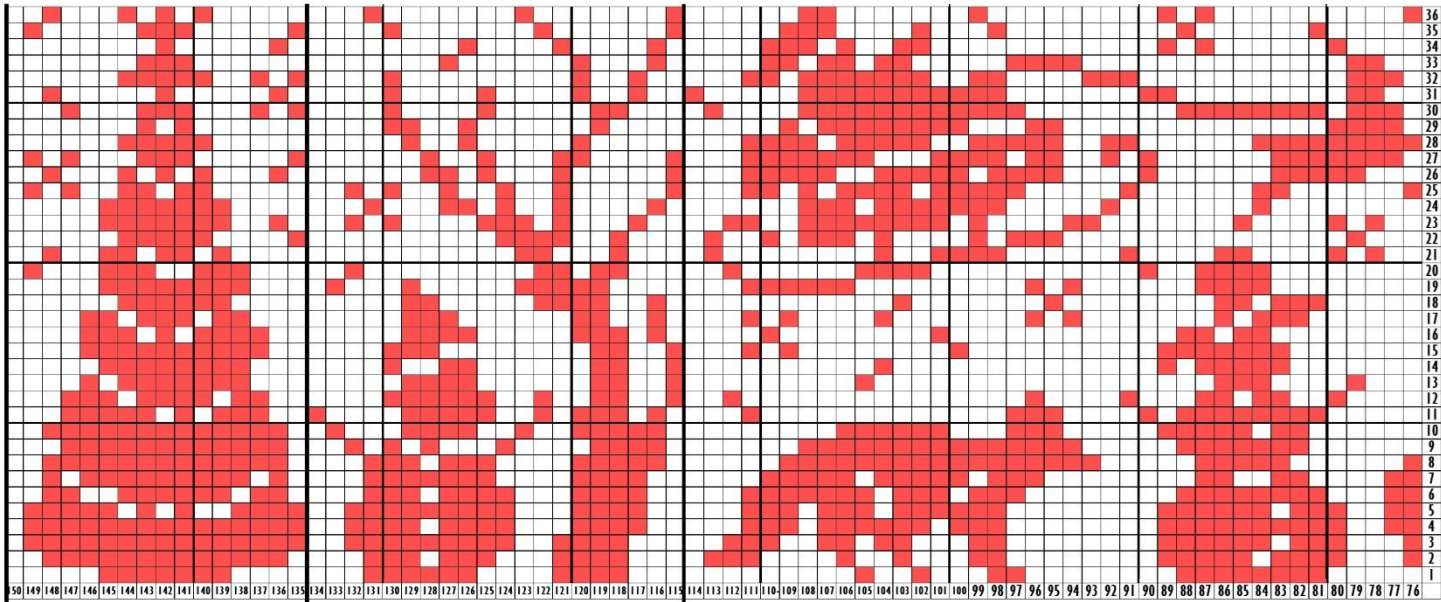
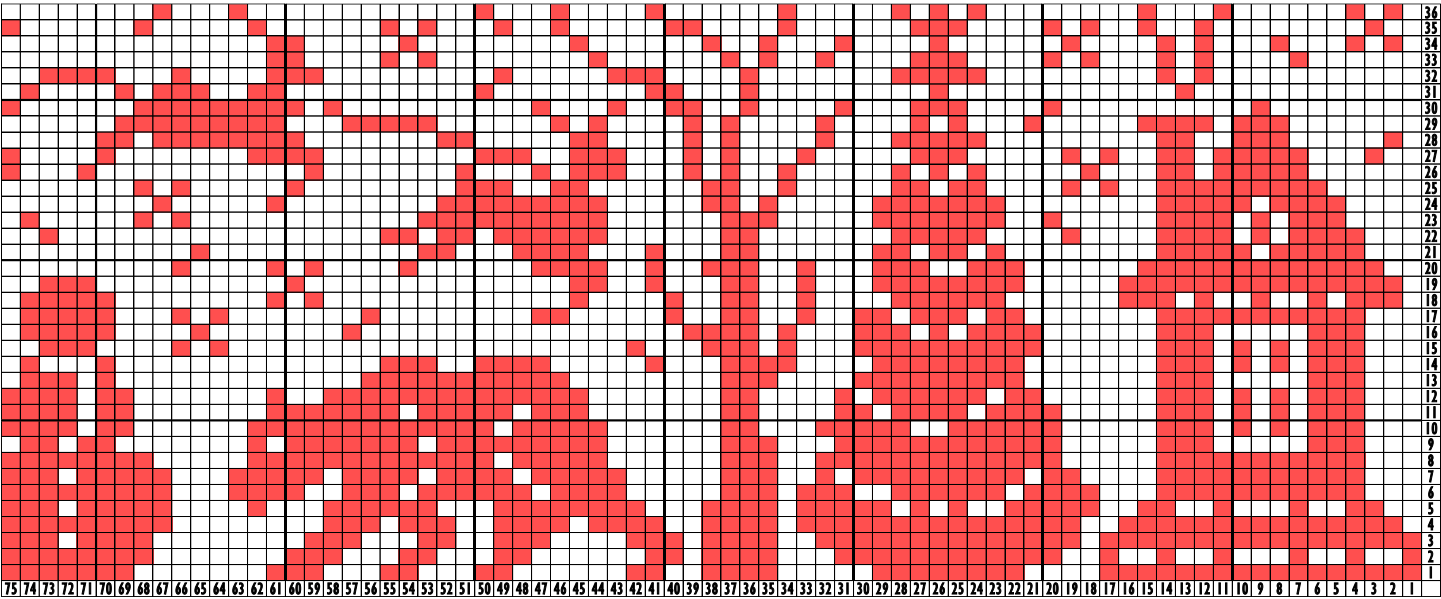
If desired, duplicate stitch anything you would like to highlight.

Finished!!



Copyright: This pattern was designed by JoansGarden. The pattern itself is copyright protected; it should not be reproduced (except for your personal use), redistributed, gifted or displayed publicly in any way. You can make as many beanies as you like to give as gifts or to sell.

Northern Winter Chart



← 23" (58 cm) ← 21" (53 cm) ← size 18" (46 cm)