

---

# Story Walk

By Melissa LaBarre

---



**Yarn:** Jamieson's Shetland Spindrift (fingering weight/ 100% wool/ 25g/ 105m/115yds per skein) 1 skein each in Color A (Salmon 301) Color B (Shaela 102) and Color C (Eesit 105)

**Needles:** US 2 (2.75mm) 16" circular needle. US 4 (3.5mm) 16" circular and dpns

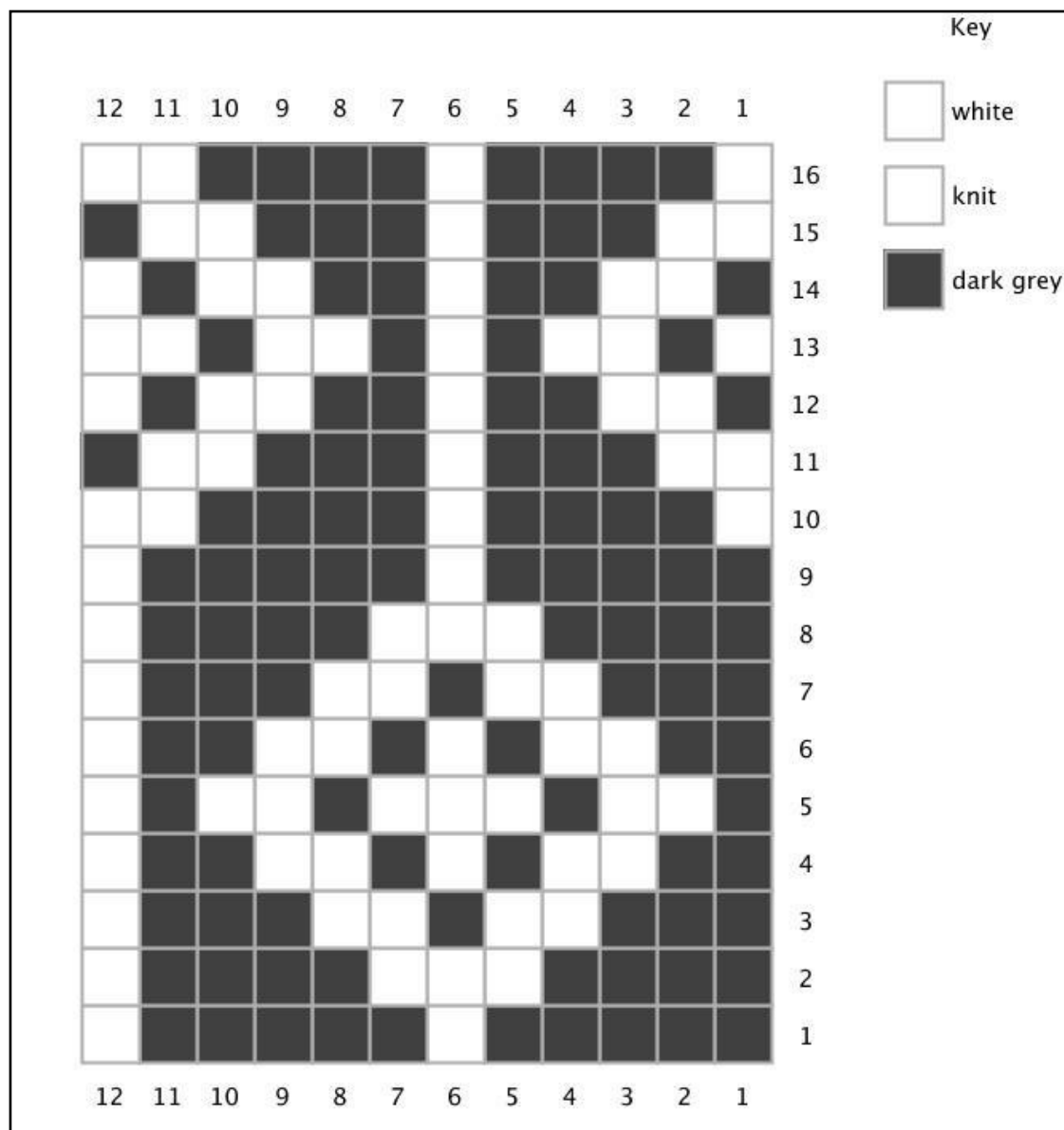
**Notions:** stitch marker, blunt needle for weaving in ends, pom pom maker

**Gauge:** 28 sts and 32 rounds = 4" in charted pattern on largest needles

## Pattern

With smallest needle and Color A, cast on 144 sts. Place marker and join, being careful not to twist. Work in p2, k2 rib (\*p2, k2, repeat from \*) for 15 rounds. Break yarn, switch to larger circular needle, and join Color B. Work in p2, k2 rib for 1 round only.

Add Color C and begin working from chart. Work all rounds of chart 2 times total, then work round 1 only, once.



Break yarn for Color C and join Color A. Begin working decreases.

---

## Decreases

(switch to dpns when you can no longer work comfortably on circular needle)

Round 1: Knit with Color A

Round 2: \*ssk, k8, k2tog, rep from \* to end of round. 24 sts decreased. 120 sts on needle.

Round 3: Knit with Color B

Round 4: Knit with Color B

Round 5: Knit with Color A

Round 6: \*ssk, k6, k2tog, rep from \* to end of round. 24 sts decreased. 96 sts on needle.

Round 7: Knit with Color B

Round 8: Knit with Color B

Round 9: Knit with Color A

Round 10: \*ssk, k4, k2tog, rep from \* to end of round. 24 sts decreased. 72 sts on needle.

Round 11: Knit with Color B

Round 12: Knit with Color B

Round 13: Knit with Color A

Round 14: \*ssk, k2, k2tog, rep from \* to end of round. 24 sts decreased. 48 sts on needle.

Round 15: Knit with Color B

Round 16: Knit with Color B

Round 17: Knit with Color A

---

Round 18: \*ssk, k2tog, rep from \* to end of round. 24 sts decreased. 24 sts on needle.

Round 19: Knit with Color B

Round 20: Knit with Color B

Round 21: Knit with Color A

Round 22: \*ssk, k2tog, rep from \* to end of round. 12 sts decreased. 12 sts on needle.

## **Finishing**

Break yarn and thread through remaining sts. Weave in ends. Block using water or steam. Make pom pom with remaining yarn in Color A (I use Clover brand large pom pom makers)