



songbird mittens

This nature-inspired pattern is recommended for intermediate-level knitters who have experience with stranding and working from charts. The sample above was created with Madelinetosh Tosh Merino Light (Baroque Violet and Antique Lace colorways). I recommend using a dark and light colorway, as the design will show up best with contrasting tonal values.

Materials

- Approximately 160 yards of main color (dark) in fingering/sock weight
- Approximately 160 yards of contrast color (light) in fingering/sock weight
- US size 2 (2.75mm) circular needle for Magic Loop method, or US size 2 (2.75mm) DPNs
- Darning needle and waste yarn

Gauge: 10 stitches and 10 rows = 1" (resulting in a women's medium sized mitten).

Finished measurements: 10" long from cuff to tip, and 8" in circumference around the fingers.

Cuff

Begin the cuff by casting on 64 stitches in main color, using the long-tail cast-on. Divide the stitches on your needles and join for knitting in the round, being careful not to twist stitches. You may want to use a stitch marker to indicate the beginning of each round.

Knit 6 rounds of (K1, P1) ribbing in main color, then follow the cuff chart, reading each row from right to left.

As you knit the stranded portions of the mitten, remember to keep floats loose to prevent the fabric from puckering.

Mitten Body

After completing the cuff chart, begin the mitten body chart, being careful to increase stitches as indicated (M) on the chart.

Round 14: When you reach the 15 stitches above the thumb gusset (highlighted in blue), slip these stitches onto waste yarn (to be picked up later for the thumb). Then, cast on 10 stitches using the backward loop cast-on. I recommend alternating main and contrast colors as you cast these stitches on, to avoid any floats. At this point, I found it helpful to thread a piece of waste yarn through the 10 cast-on stitches, so that they are easier to pick up later on. If you are using the Magic Loop method, this is most easily done when the stitches are on the cable.

Continue with the chart, beginning decreases on round 53.

When you have completed round 68, break the yarn, leaving approximately 10" tails.

Use a darning needle to thread the ends through the remaining live stitches. Pull taut, thread through the top of the mitten to the inside, and weave in the ends.

Thumb

Pick up the 15 stitches from waste yarn, plus one extra stitch on the outside of the thumb.

On the left mitten, this extra stitch will be to the left of the 15 stitches; on the right mitten, it will be to the right of the 15 stitches.

Then, pick up the 10 stitches from the cast-on edge and 6 additional stitches (3 to the left and 3 to the right of the 10 cast-on stitches). You should have 32 stitches total on your circular needle or DPNs. Follow the thumb chart beginning with the front of the thumb.

When you've completed the chart, break the yarn, leaving 10" tails, thread them through the remaining live stitches, pull taut, thread through the top of the thumb to the inside, and weave in the ends.

When you have completed the thumb, weave in all remaining ends, and block as desired. Enjoy!

CUFF CHART

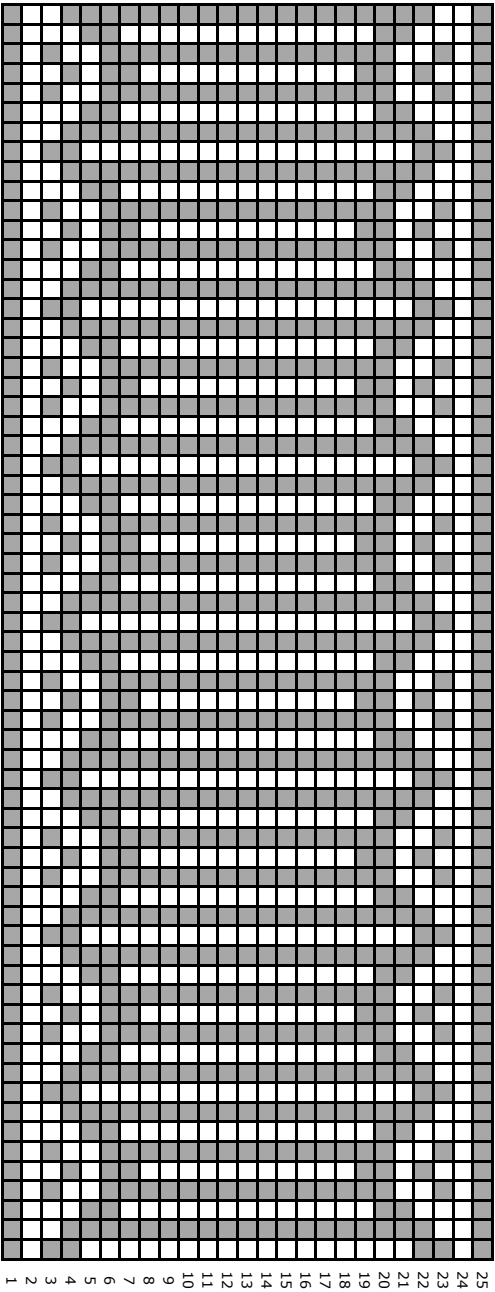


CHART KEY

= KNIT MAIN COLOR

= KNIT CONTRAST COLOR

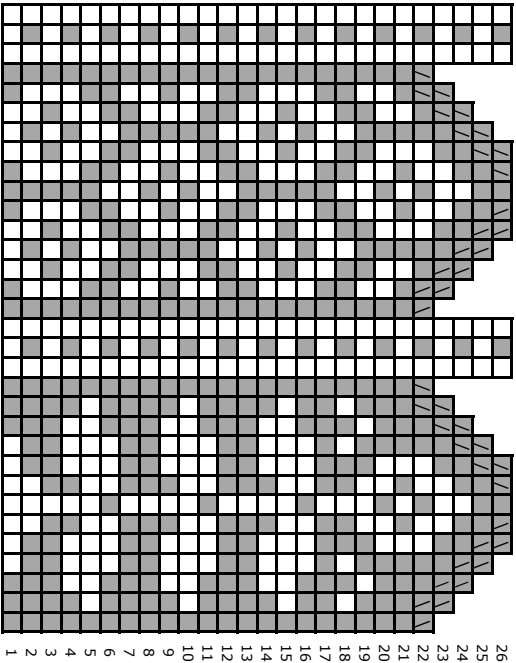
= SSK = SLIP, SLIP, KNIT

= K2TOG = KNIT TWO STITCHES TOGETHER

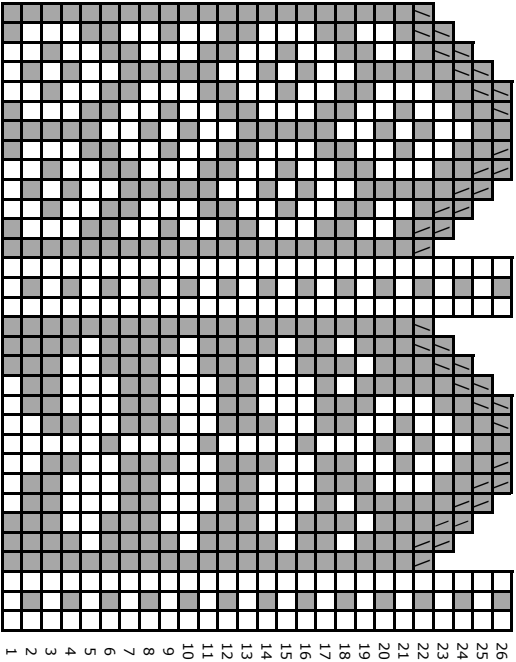
= MAKE ONE STITCH

= THUMB STITCHES

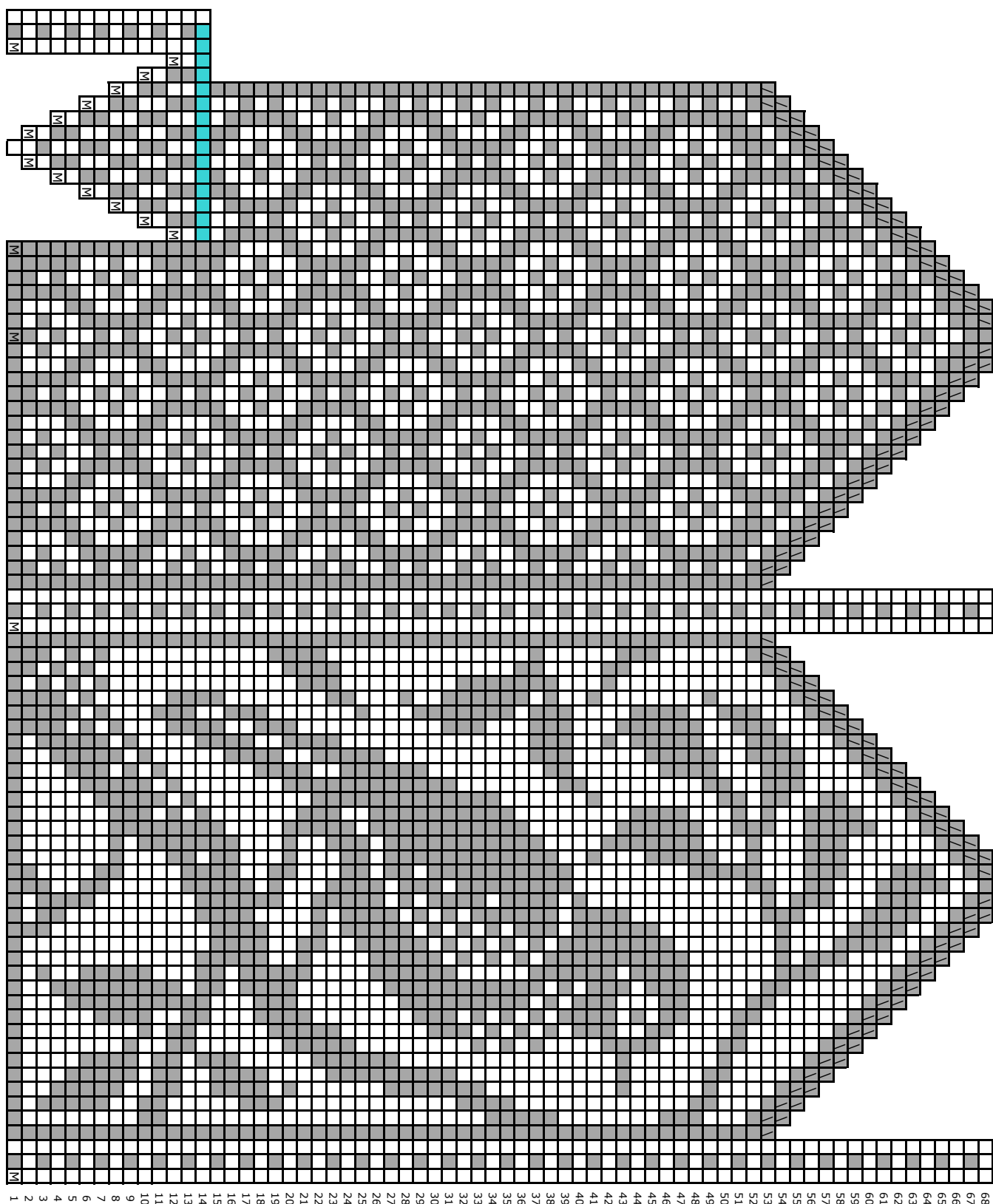
LEFT THUMB



RIGHT THUMB



LEFT MITTEN



RIGHT MITTEN

