

SMAUG

Design Jenny Alderbrant

Please read the whole pattern before you start

This is what you will need to knit a pair:

Fingering yarn that is about 175-210m/50 gr. 1/ 50g skein of patterncolor and maincolor+ 1-2 g of yellow and orange .

2-3mm DPNs or circular needles

Stitchholder or some scrapyarn to hold the thumb stitches

Tapestry needle to weave in loose ends

Gauge for the mittens is about 35 st/4 inches or 10 cm in stranded knitting with 2 colors.

You can adjust the size by changing the gauge

Higher gauge- smaller mittens

Lower gauge- larger mittens

For mens size mittens you can use thicker yarn approx 150m/50 g and size 3-3,5mm needles for gauge 30-32 sts/ 10 cm.



Stitches and short terms used

☐ 2tog-knit 2st together as one - Right leaning decrease

☐ S1k1pssso- slip1 kw, k1, pass slipped st over knitted.- Left leaning decrease.

ML-Increase-Make one left. Make 1 st by picking up the bar between 2 st, with your left needle from the front and knitting it in the backloop.

*Chart is read from right to left for right mitten and from left to right for left mitten.

*X in the chart means no stitch and you should read and knit next st.

Cuff

*Cast on 66 st using double needles 0,5-1 size smaller than you need to obtain the correct gauge in maincolor red.

*Knit 8 rows.

*Yarn over, 2tog to the end of row .

*Knit 1 more row.

*Knit 7 rows in patterncolor black.

*Follow chart for cuff and on the last row increase to 72 sts evenly.

*Switch to larger needles an follow chart for mitten.

Good Luck!

*When you get to the stitches that marks the placement of your thumb(triangle), place those 15 sts on holder or some scrapyarn(you work theese sts when you knit your thumb) and co 15 new sts behind them using your working yarn.

*Keep following the chart and decrease for the top when you get to decreasing symbols.

*When you have approx 8-12 st left cut the yarn and pull it through the remaining st and through the top. Tighten.

Thumb

*Place the 15 sts from your stitch holder or scrapyarn on your needles and knit them following chart for thumb.

*Pick up and knit 17 more st around the hole.

*Keep knitting the thumb following the chart.

*Top of thumb is decreased and finished the same way as the mitten.

*Fold the cuff at the eyletrow and sew it on the inside.

*Block your mittens and leave them to dry in the shape you want.

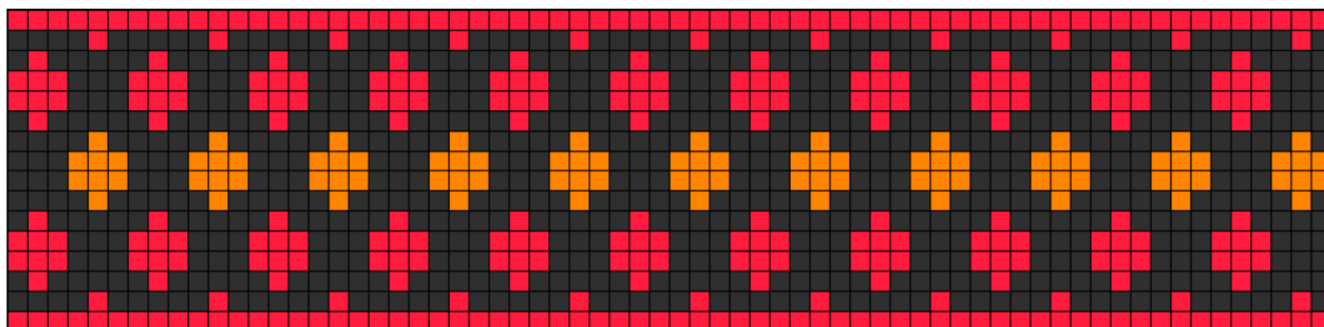
It is not allowed to copy or spread this pattern in any way.

It is ok to sell mittens made from this pattern. No massproducing or selling over 20 pairs. If you want to sell please attach some sort of note with pattern and designer name. Are you planning on selling more than a few please let me know.

You can e-mail me at jenny.alderbrant@swipnet.se You can also contact me on Facebook or Ravelry.

©Jenny Alderbrant-Lull'Ull av Jenny Penny

Cuff chart



Mitten chart

©Jenny Alderbrant

