

SHAPE SHIFTING SCARF



KATHARINA KUNTZ

This scarf was a collaboration with my followers, as I asked them which characters they wanted on the scarf. I'm very proud to say I was able to fulfill almost all of their requests. If you're one of those followers, I hope you're happy with the final product and your favorite character made it onto the scarf.

I'm not that familiar with the series and was worried I wouldn't do it justice, but I'm very happy with the end result. This time I also tried something new and added fringe to the ends.

The scarf had a character change Catbug became Slime Princess, but the Catbug version is on page: 27+28 .

You will need:

Fingering weight Yarn (2,5 – 3,5mm/ US 1 ½ - 4 Needle) around 650m/710yards per color.

I used:

2 skein SOUL fingering Weight Yarn (<https://punkrockunicorn.de>) in color Daffodil, 400m/100g (438 yards/ 15 oz), (85% Wool 15% Nyon), or a similar weight and yardage in the fiber and color of your choice

2 skein SOUL fingering Weight Yarn (<https://punkrockunicorn.de>) in color Blue Jeans, 400m/100g (438 yards/ 15 oz), (85% Wool 15% Nyon), or a similar weight and yardage in the fiber and color of your choice

Knitting needles: size 0 (2mm)

Gauge: 32 stitches and 44 rows per 4 inches

Finished dimensions: 83 inches (210 cm) long (without fringe), 6,2 inches (16 centimeters) wide

Additional materials: 4 Stitch markers, tapestry needle, yarn tension ring. Extra +2 spare 2mm needles (for binding of).

Skill level: Intermediate level

General Notes:

As with most double-knit projects, the two sides mirror each other, with colors opposite. If you never knitted a double-knit this video could help you understand the technique more. I would start watching at 2:44 because we are going to use a different cast on method than in this video.

<https://www.youtube.com/watch?v=uQKZR-2TwCA&t=626s>

You can also see how the color change works and how to use the tension ring. Don't worry if you have never worked with one you are going to get a hang of it pretty fast. A Tipp from me, I wrapped the yarn twice around my pinky to keep the tension.

The Side with the light background is the Main side but you can do the opposite if you like it more. Side two is the back of the scarf, with a dark background. Whichever side is facing you on a particular row is the knit side, and each alternating back side stitch will be a purl. Stop knitting and check your work frequently – a wrong color stitch, a purl where a knit stitch should be, or the unused color laying across the wrong side of a stitch will stand out on the finished scarf. You can use duplicate stitch to cover an error that is many rows back or re knit new. But I recommend to duplicate stitch over the error if there are not too many mistakes. It's soooo difficult to get the loops on the needle again after unraveling it. I put a stitch marker every 10 stitches it helps a lot. Be sure to twist the yarn at the end/beginning a row – if you do not, the front and back of the scarf will separate. In the first Video I linked this is explained as well. If the edge pattern doesn't work (The Blobs), because you have to slip the last two stitches but these would be a color change, don't worry. Just knit them at the beginning of the next row, you won't it at the end. :)

Instructions:

Cast on 100 stitches with the invisible cast on method for double knitting. This Video explains is really well. It's the first Method of the four. <https://www.youtube.com/watch?v=2IWl2jlpMBM&t=200s>

After the cast on turn your piece and knit every odd stitch in Blue Jeans (Blue, or your color of choice), purl every even numbered stitch in Daffodil (Yellow, or your color of choice). The charts show only one side of the two-sided project. Starting with Chart 1, follow the charts row by row (below). The two strands of yarn need to move back and forth together so that they stay sandwiched between the two layers of knitting when not being used to make stitches. If you don't keep them moving together you will end up with the 'wrong' color wrapped around the stitches, you have knitted – you will notice pretty quickly! Remember that when you have turned the work and are coming back along the row from left to right, what is shown on the chart for that row is the purl stitch. Knit the even numbered stitches, from 50 down to 2, in the opposite color, and purl the even numbered stitches, from 49 down to 1, in the chart color. When you turn back to the original side, knit in the chart color and purl with the second color. If you are new to double-knitting this pattern should be a good place to start - the first few rows have no patterning, so your skills can develop as the scarf progresses. Always start from the bottom of the charts and work up.

Bind Off:

Put the knit and purl stitches respectively on your separate needles. Now purl all the purl stitches on the back needle, one row. It's a little tricky to purl the row because it's very tight, so be careful not to lose any stitches on the other needle. But it is possible :D.

After cutting the main yarn, 4 times the lengths of the width of the scarf, take your tapestry needle and make an invisible bind off for double knitting. It is like the Kitchener stitch.

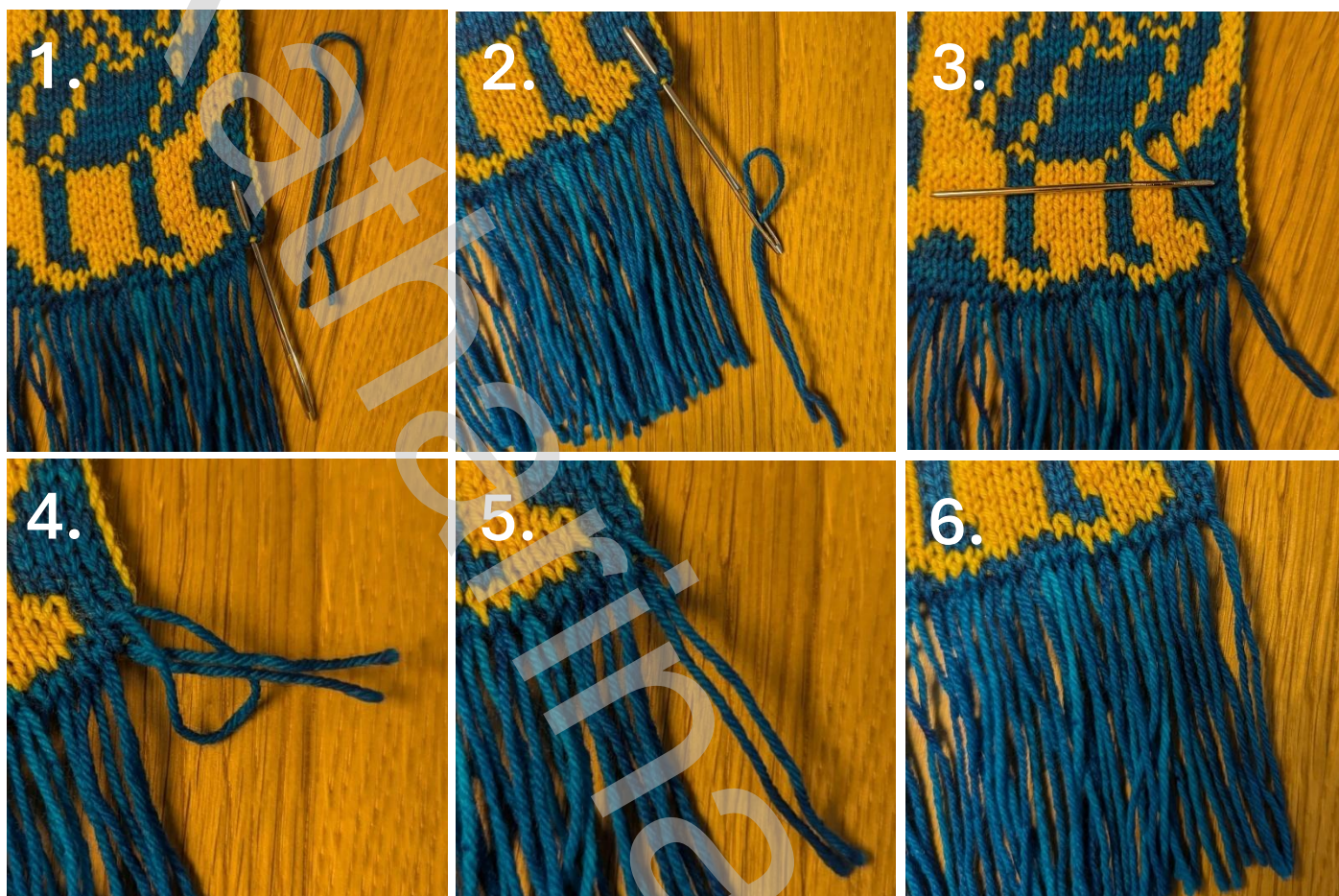
Video for the Bind of: <https://www.youtube.com/watch?v=8hAHV1O1aj0>

Last but not least:

Weave in the ends and block your scarf.


Now you can add fringe to your scarf if you want. My fringe caused the edge to curl a little, so be careful.

I used a 18cm (7 inch) piece of yarn and did it like this.:

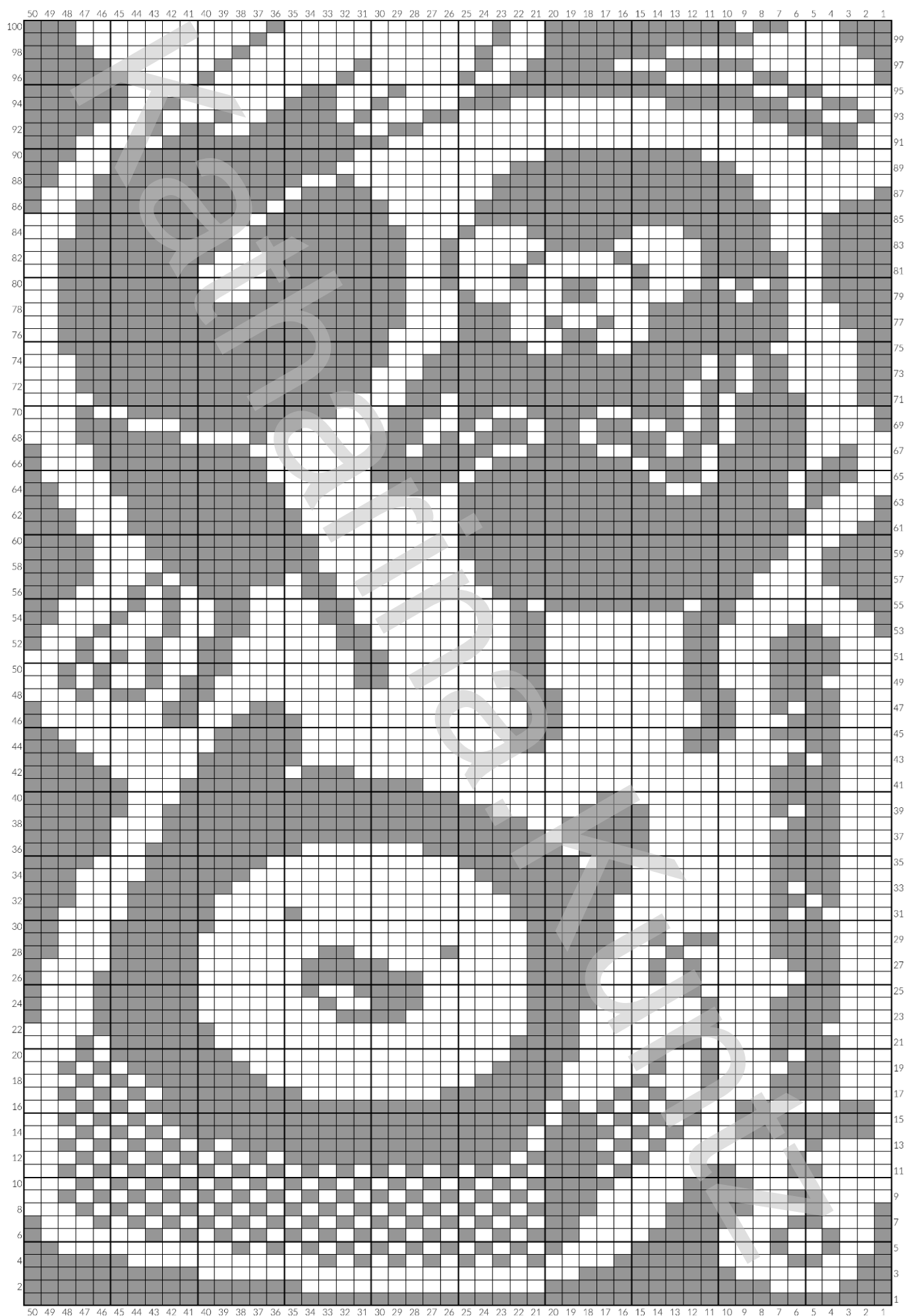


I hope you had a great time knitting this fun scarf. Send me a picture of it, please. I'd love to see it. I can't wait to see which colors you choose.

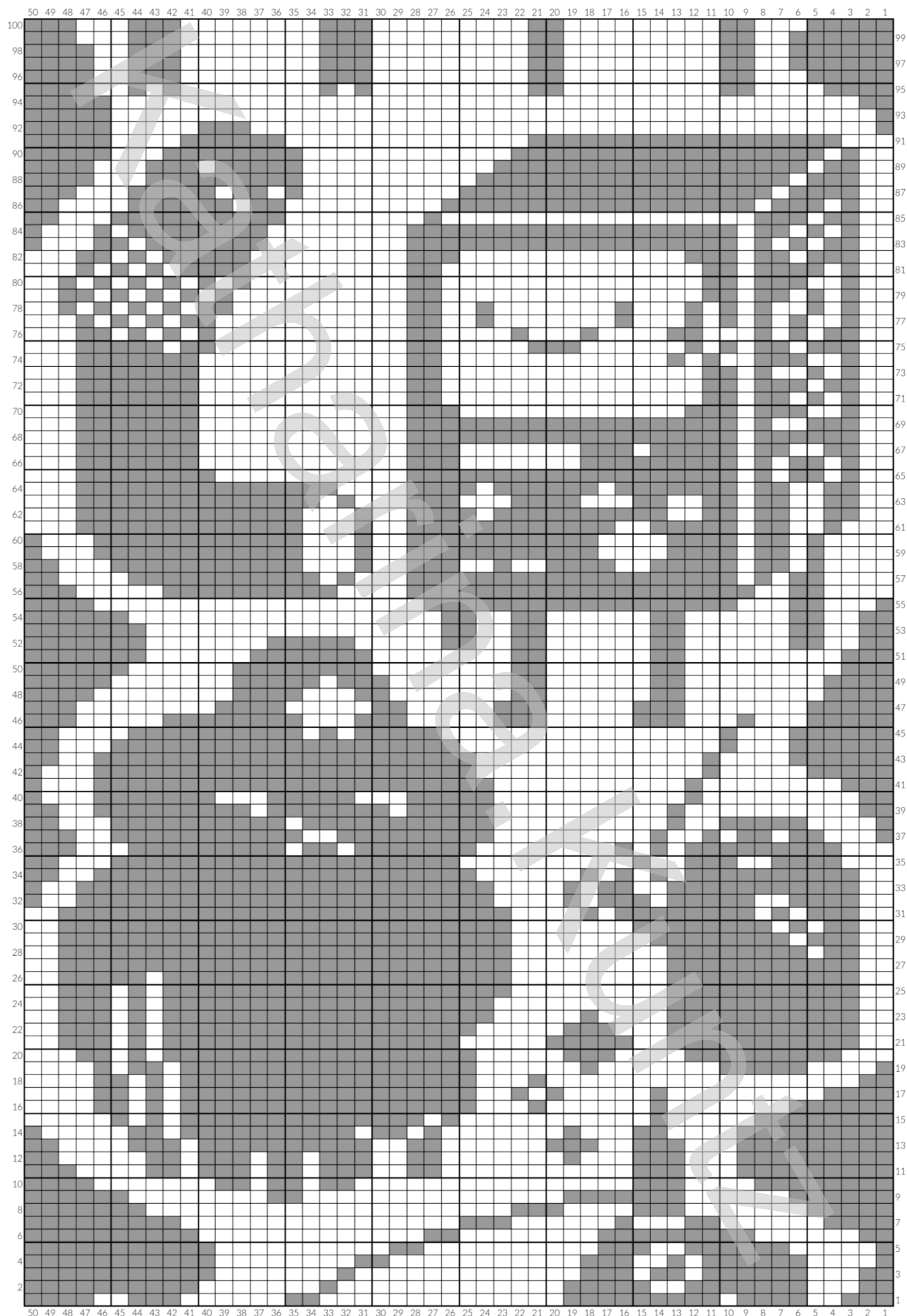
You can find me online at Instagram as [katharina.kuntz](https://www.instagram.com/katharina.kuntz)

This pattern was designed by Katharina Kuntz / March 2025. This pattern is for private use only. It is not allowed to copy, share, sell or redistribute this pattern. Neither is it allowed to sell products made with the help of this pattern. 

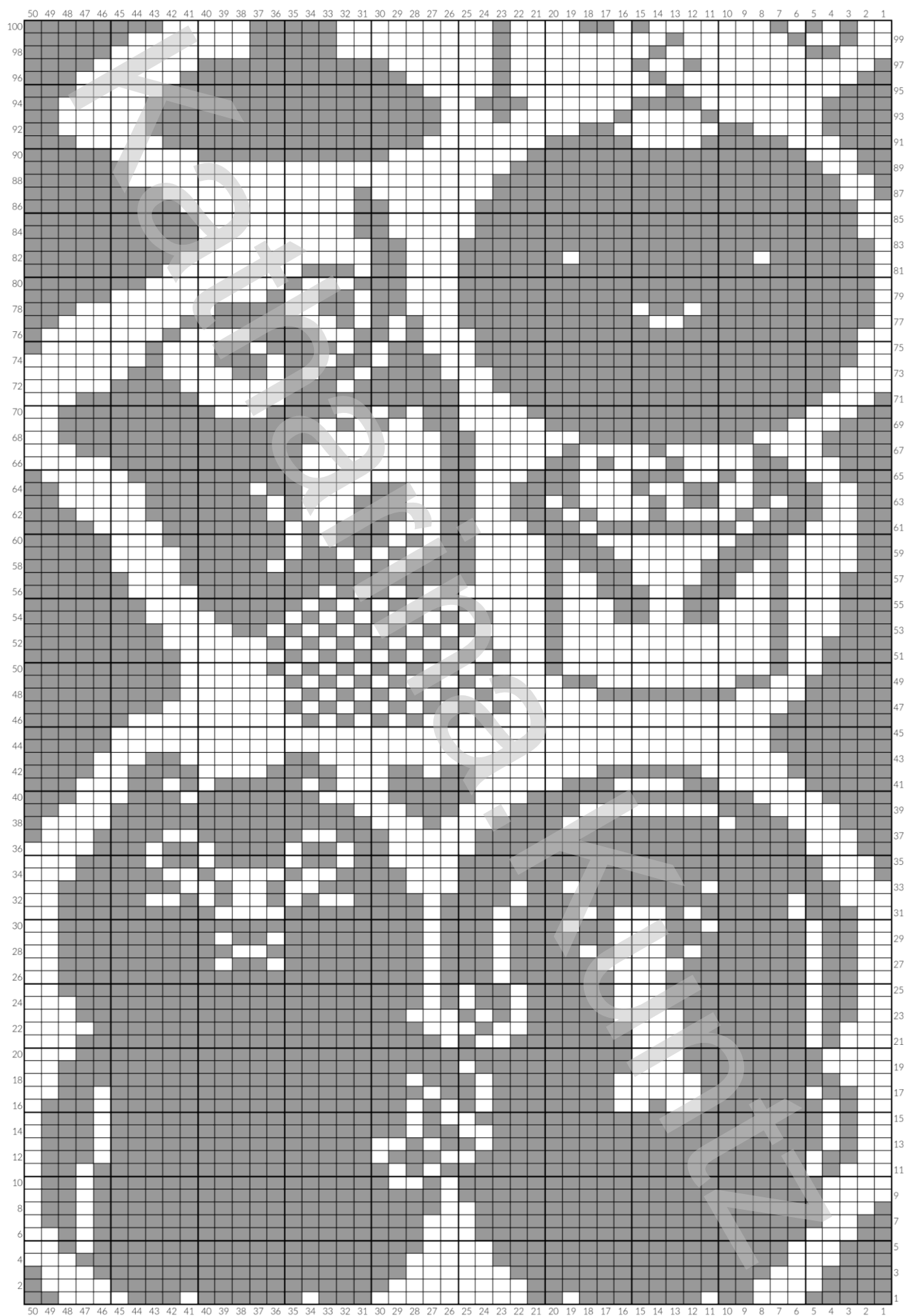
1.



2.



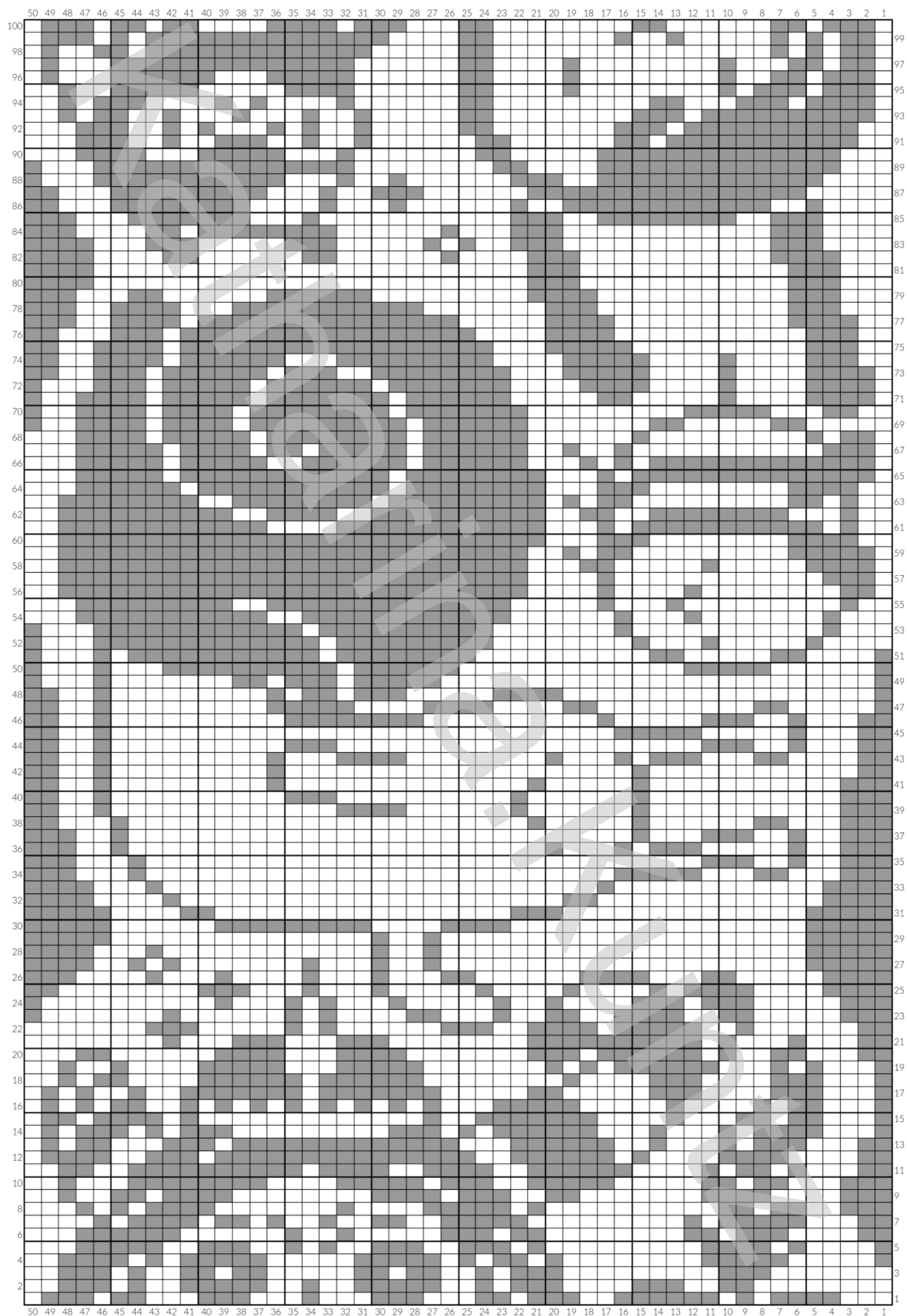
3.



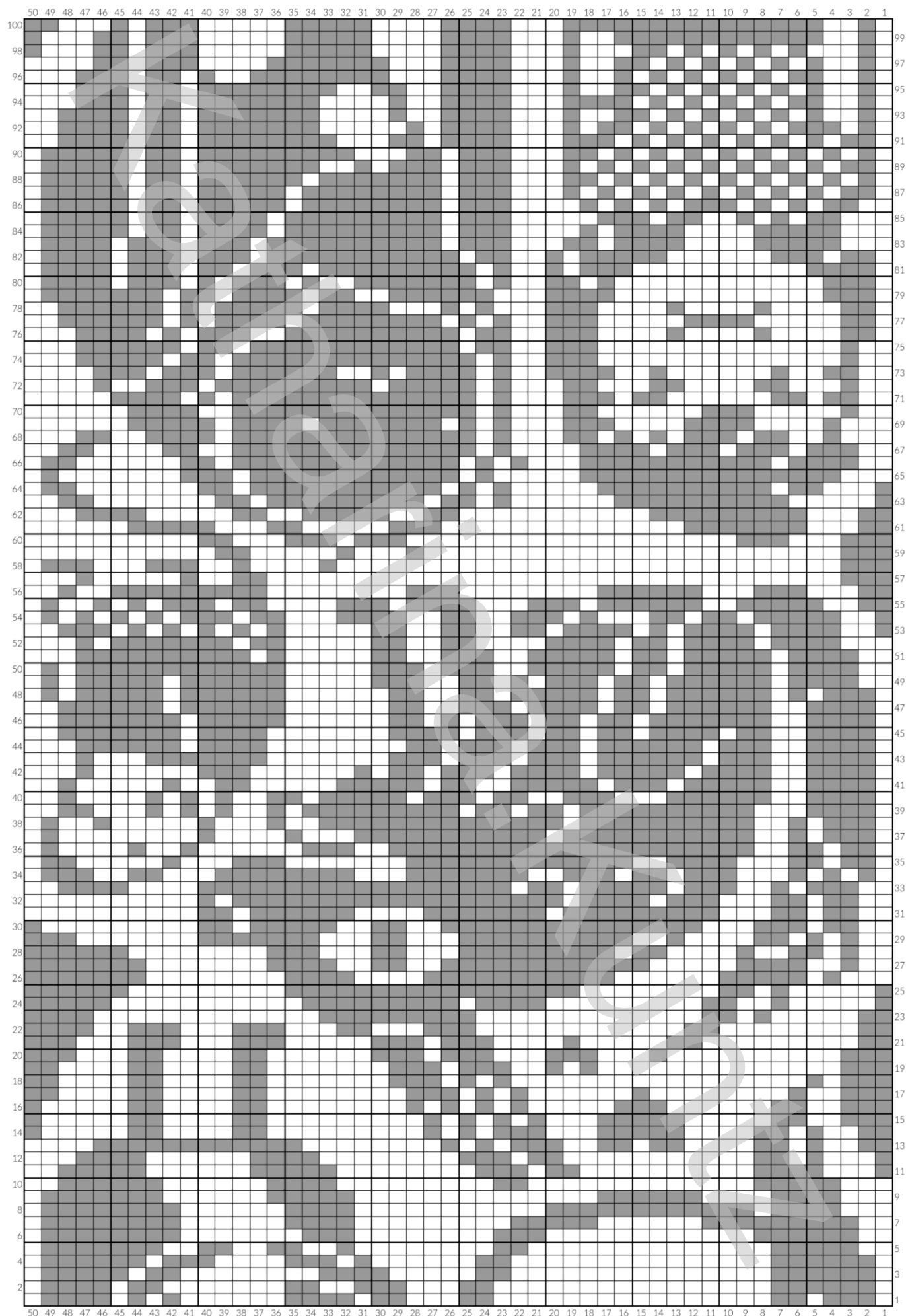
4.



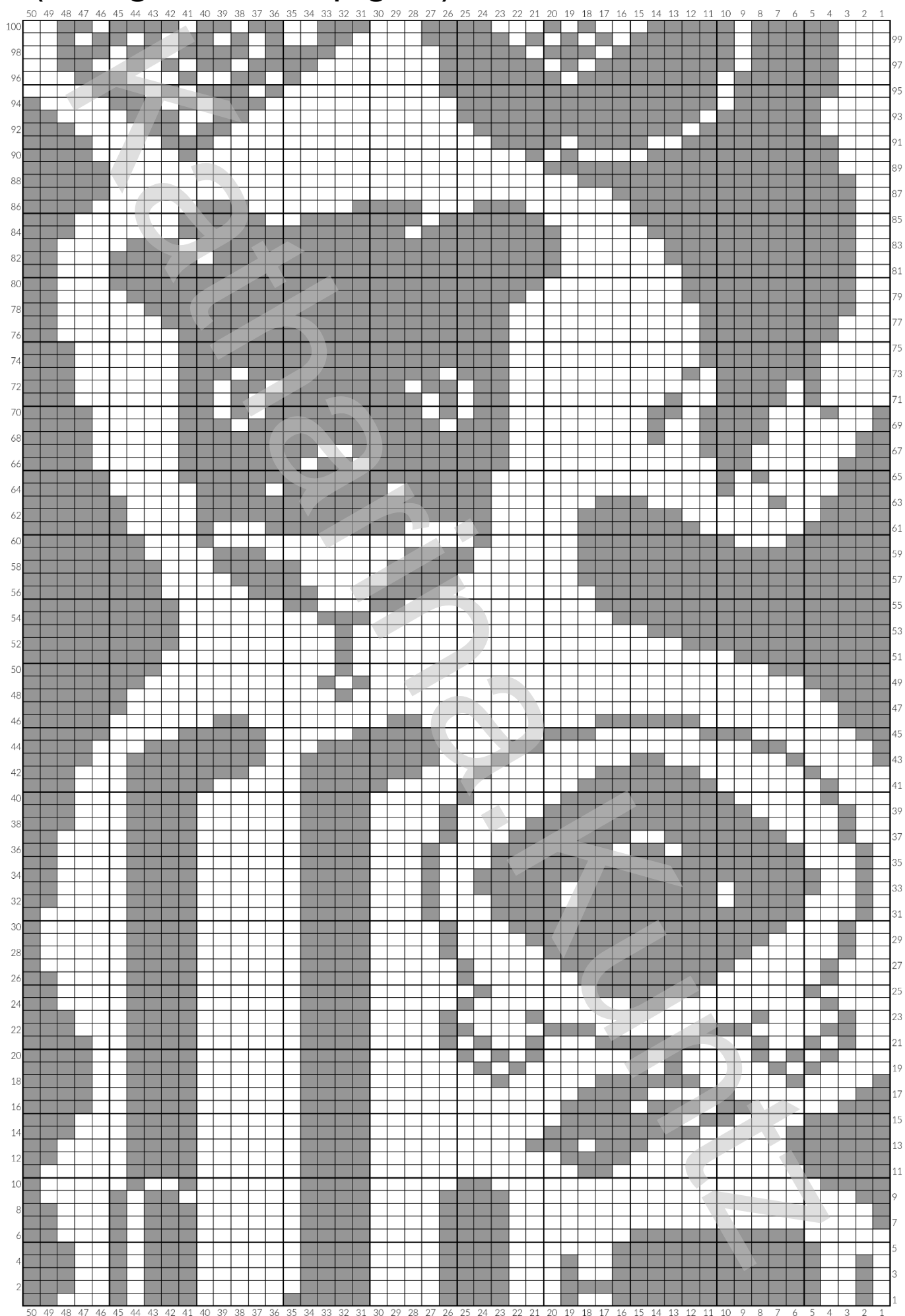
5.



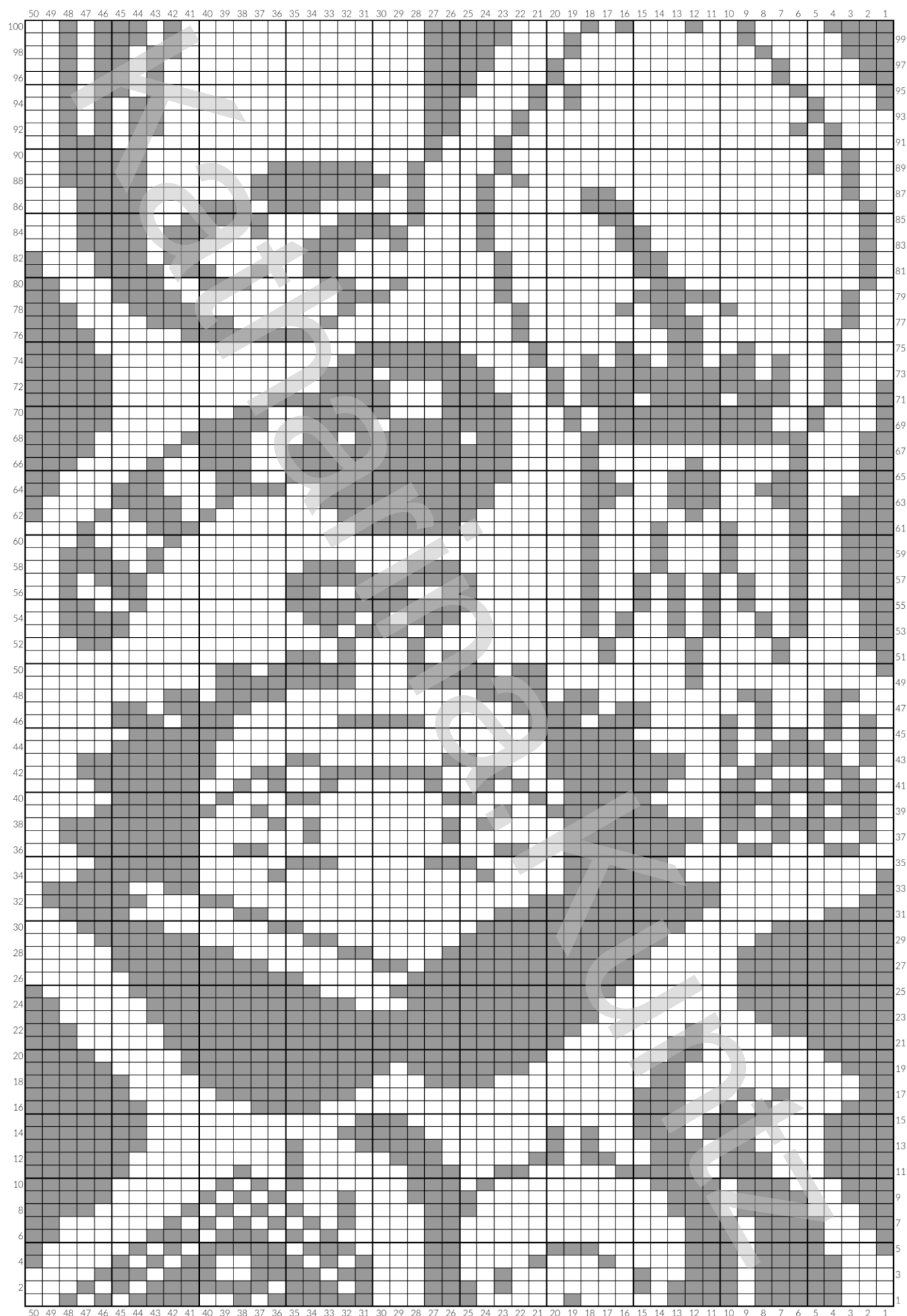
6.



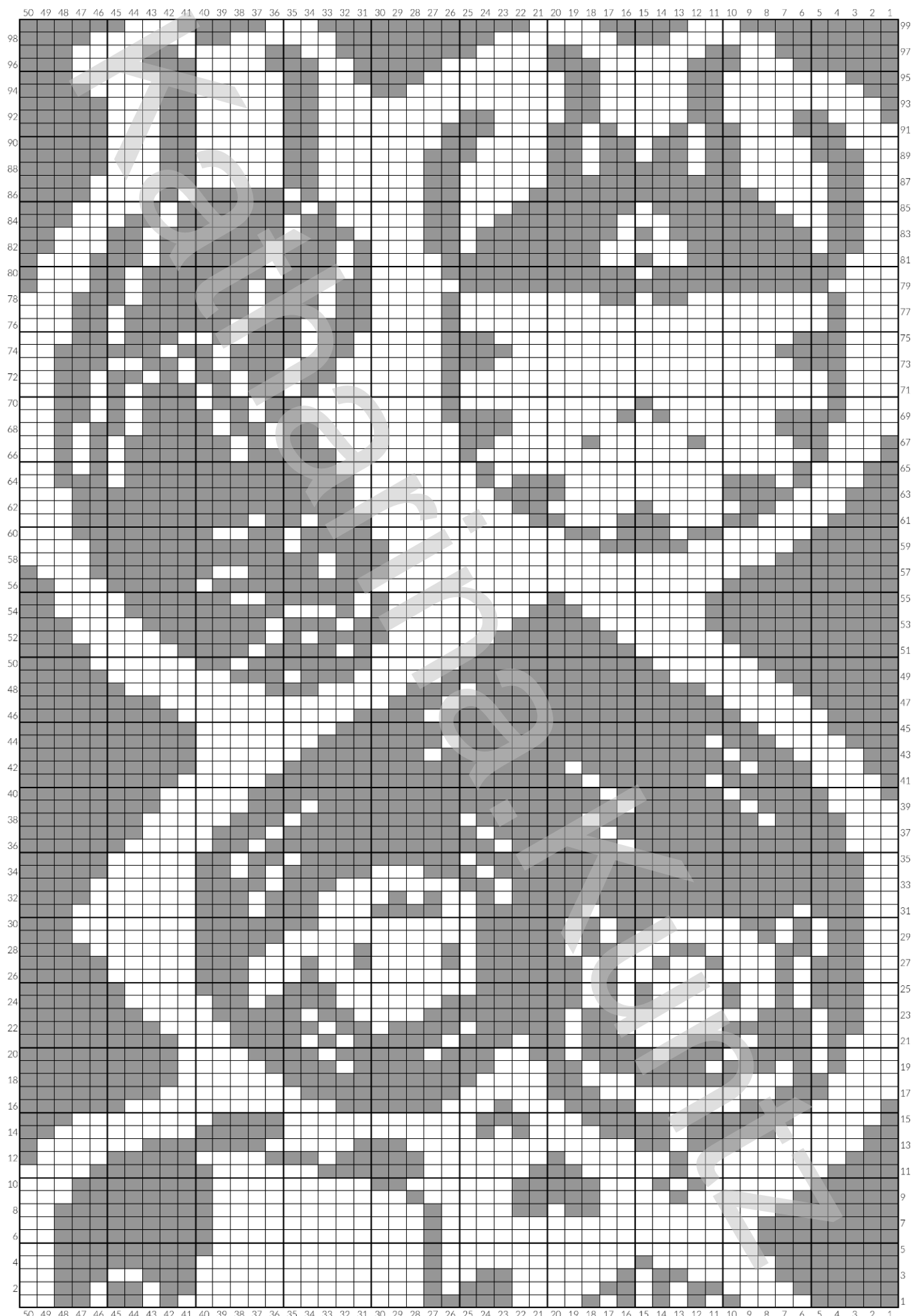
7. (Catbug version is on page 27)



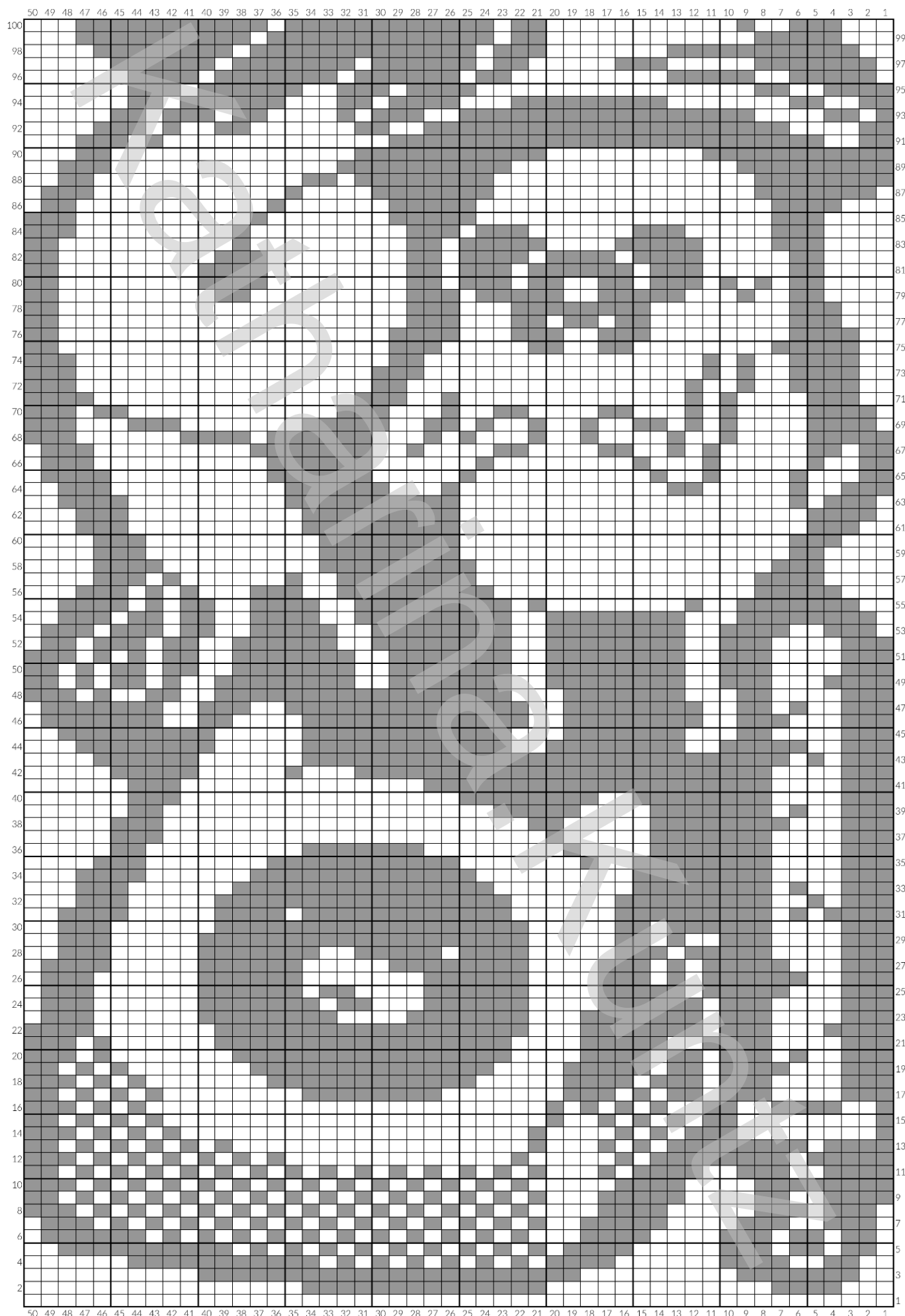
8.



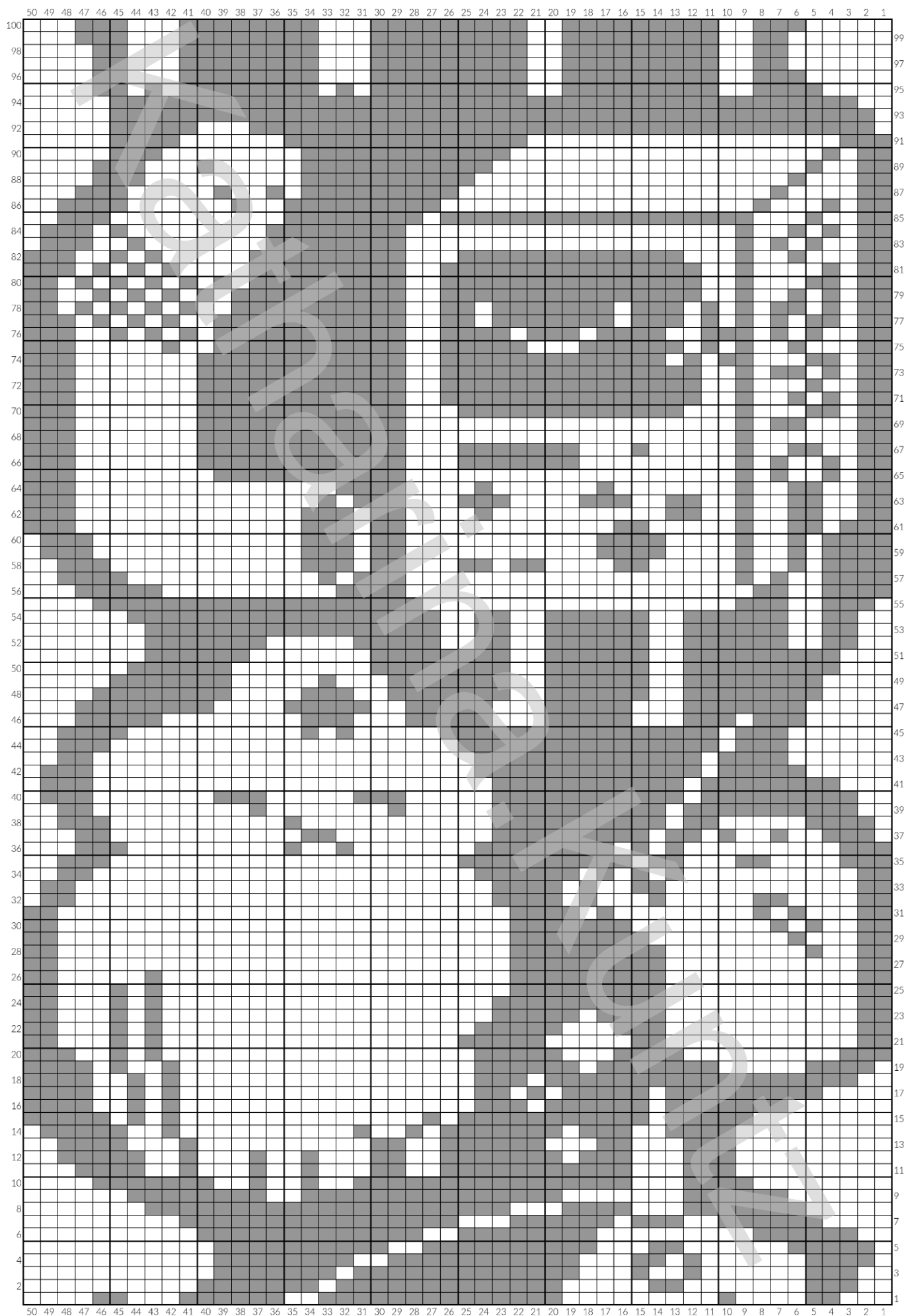
9.



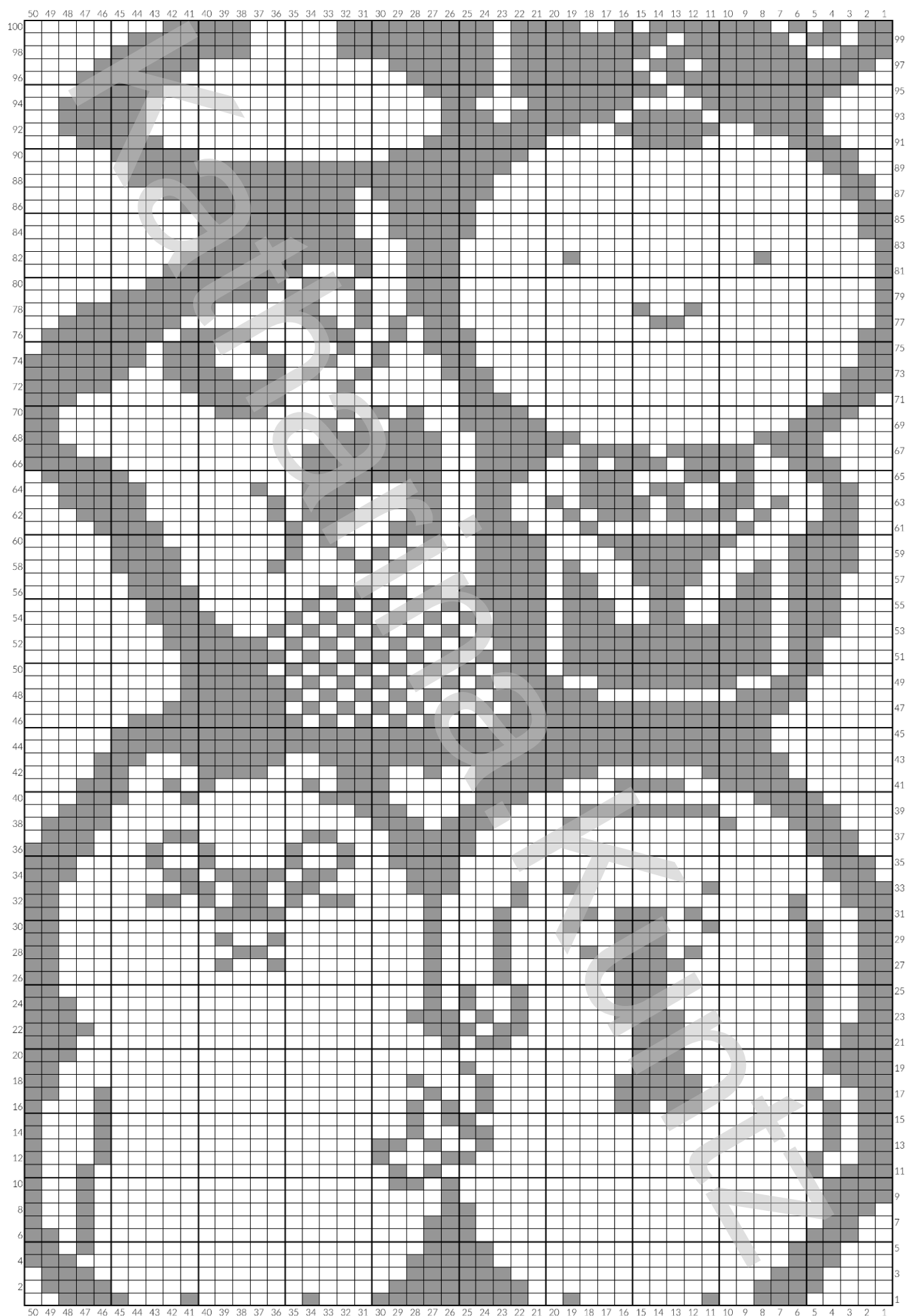
1.



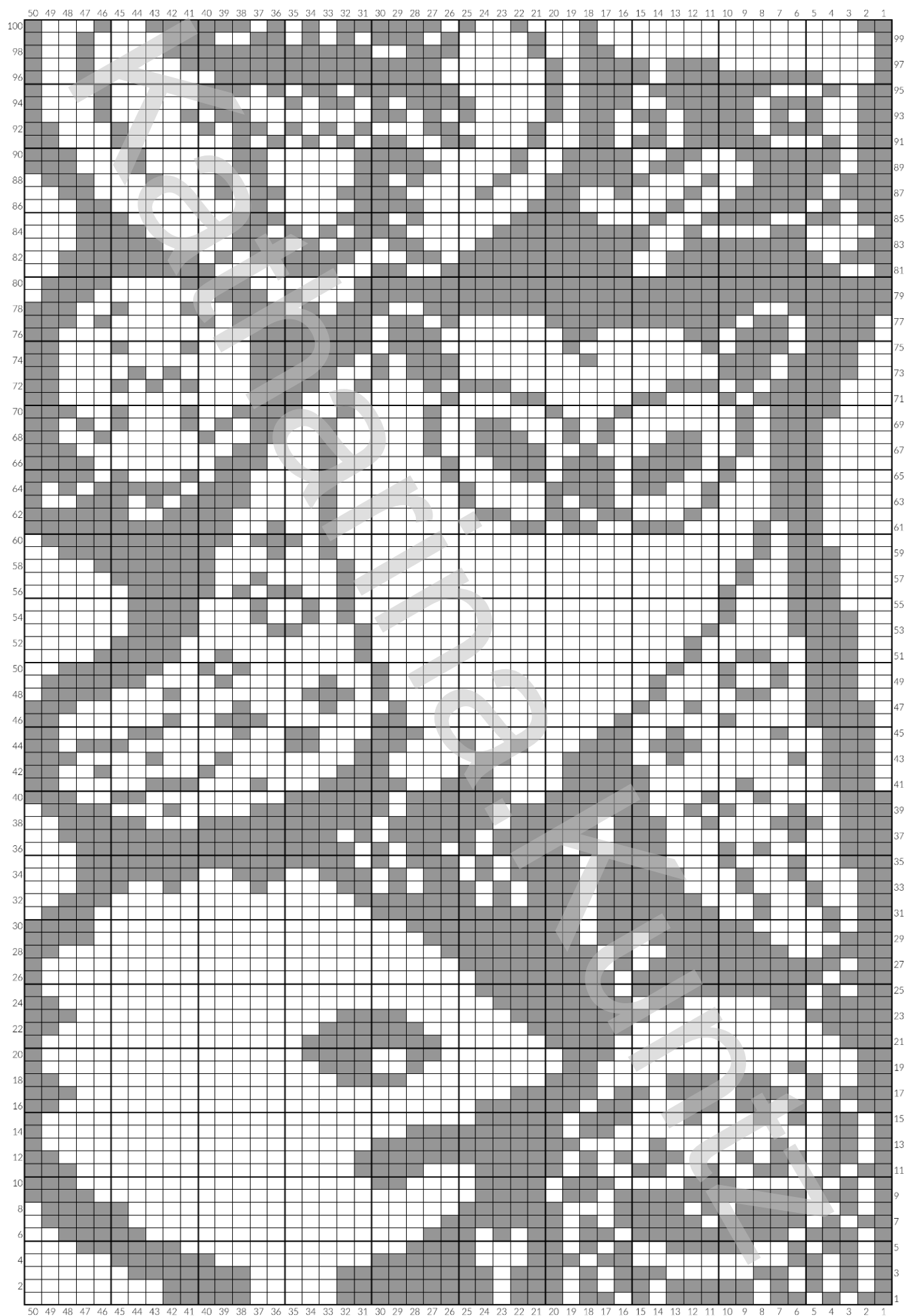
2.



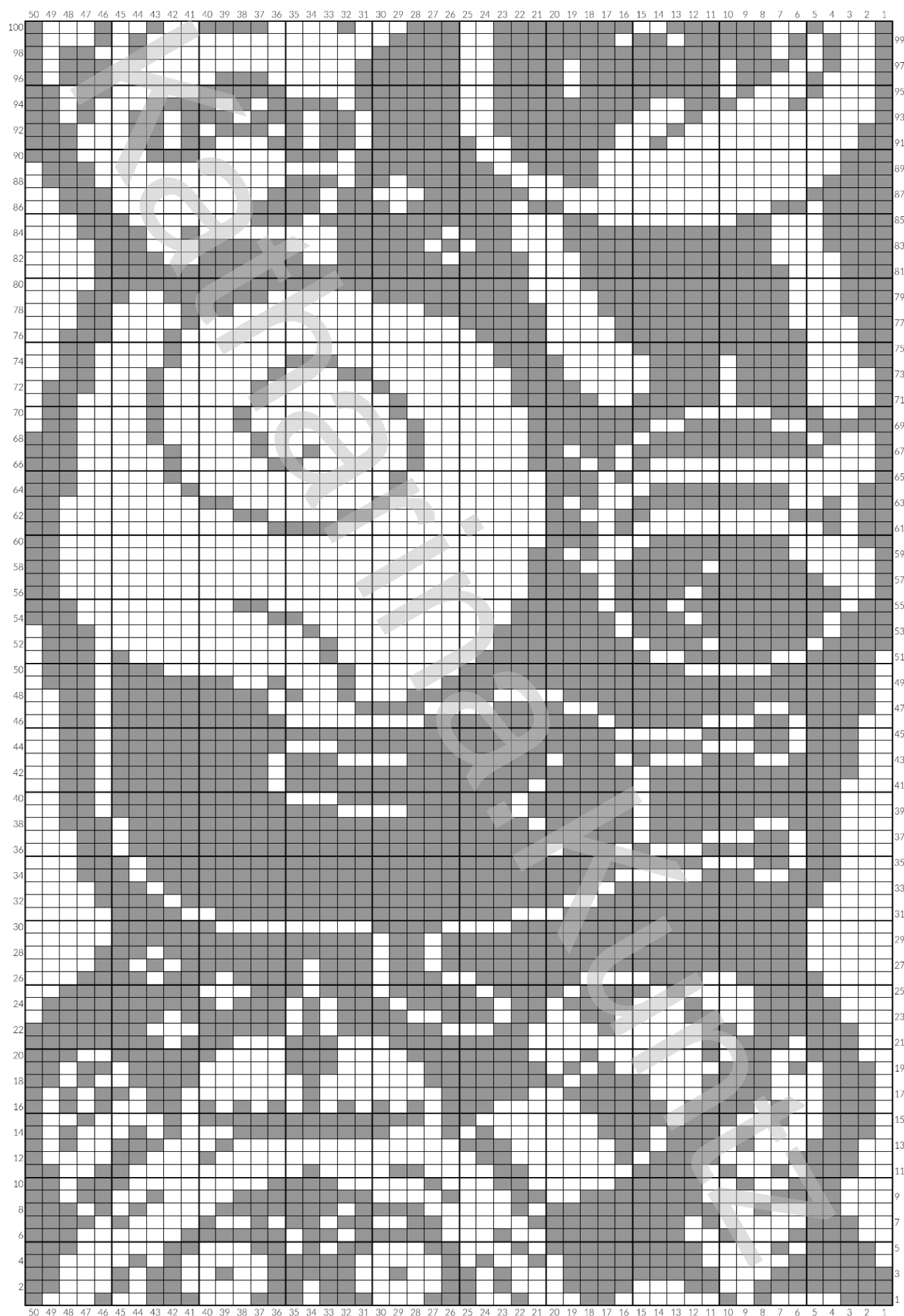
3.



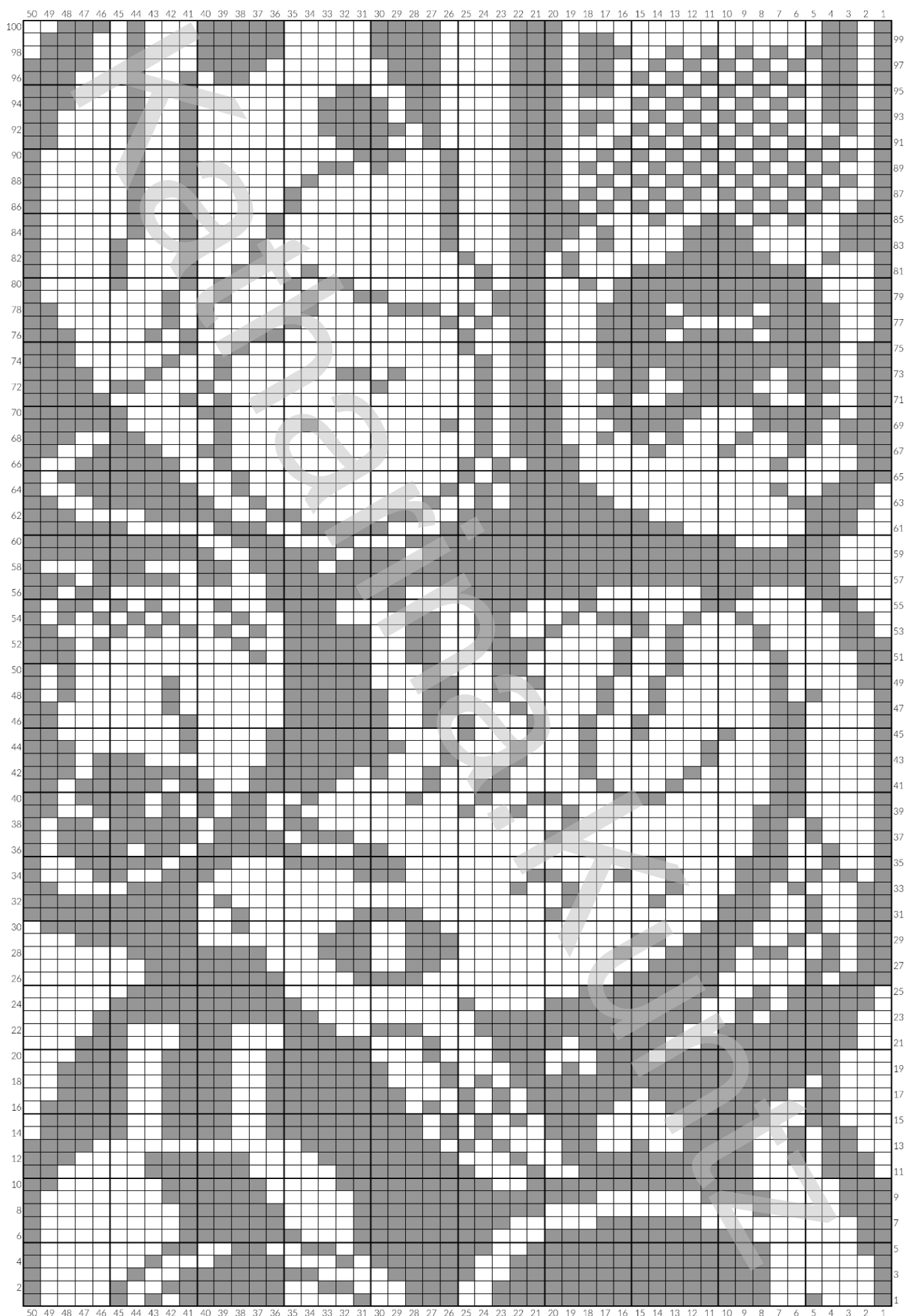
4.



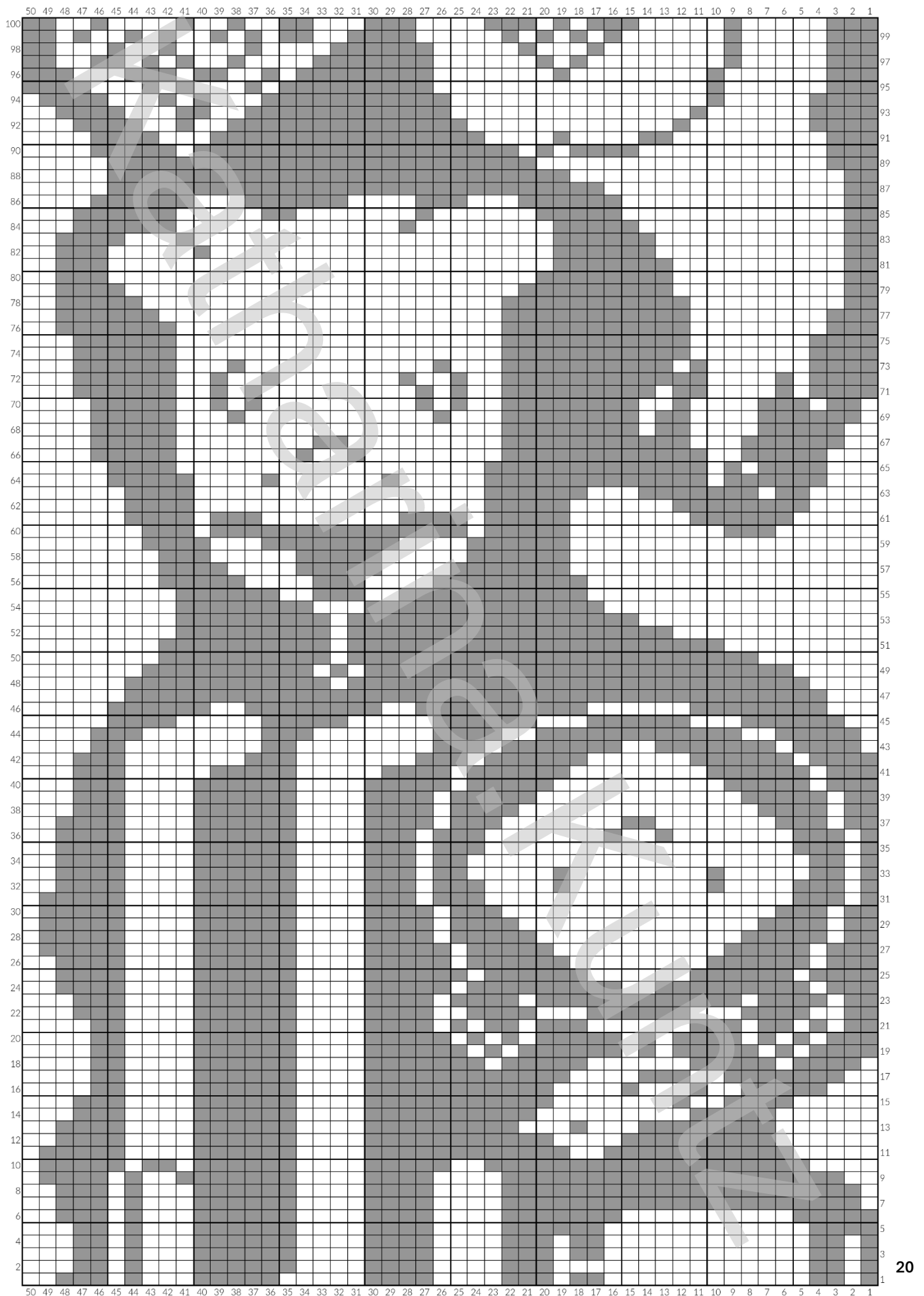
5.



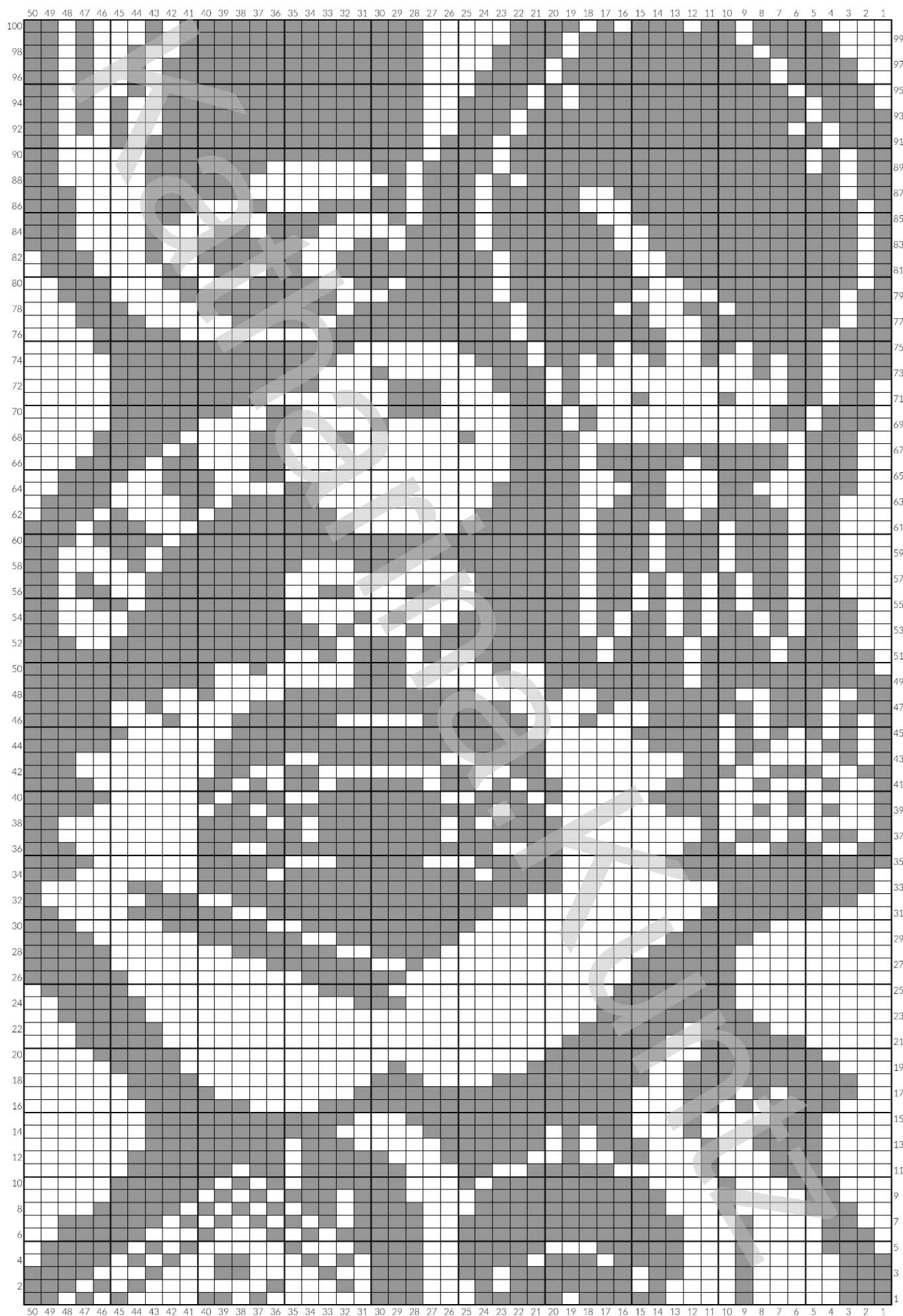
6.

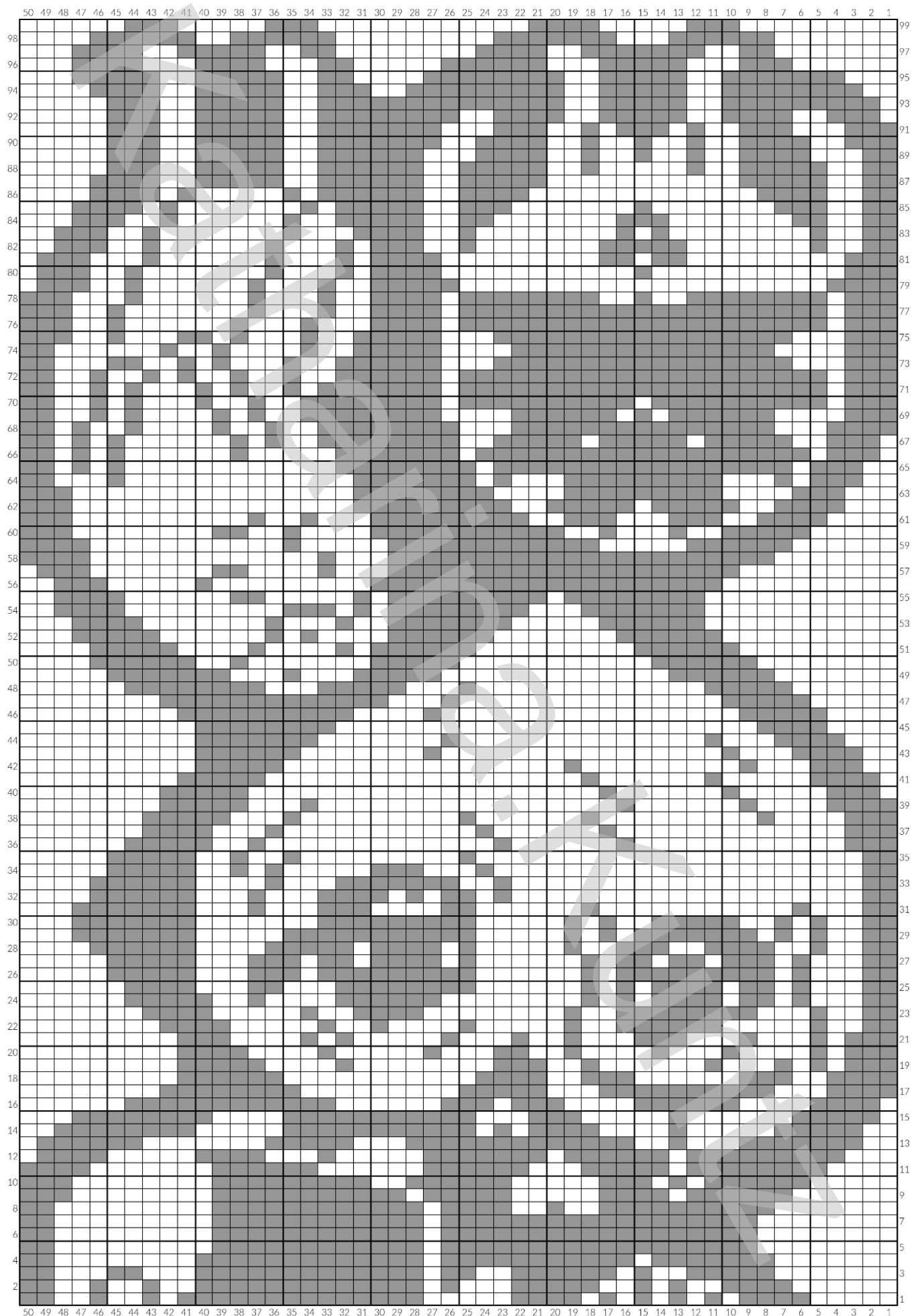


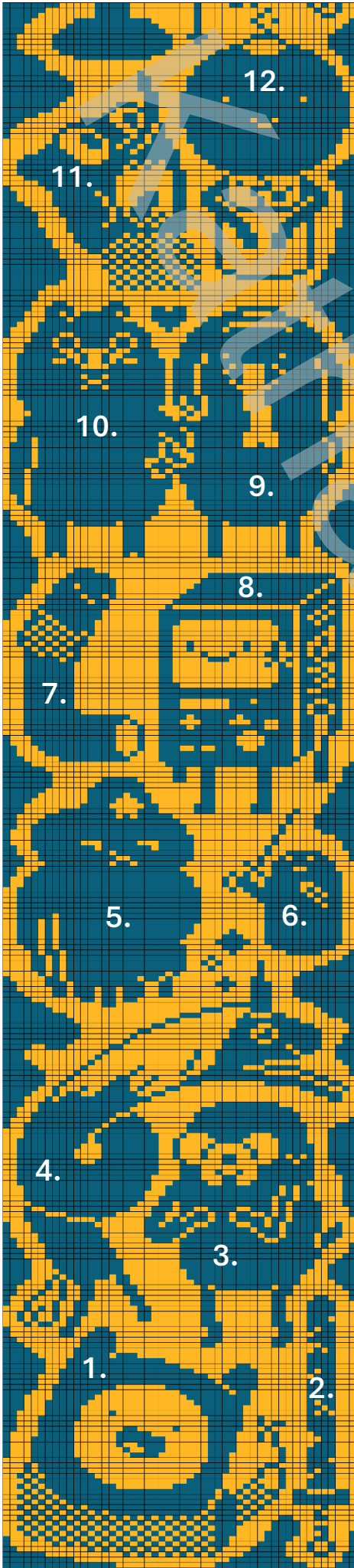
7. (Catbug version is on page 28)



8.







12. Cuber

11. Earl of Lemongrab

10. Mr. Pig

09. Tree Trunks

08. BMO

07. Selby

06. Kent

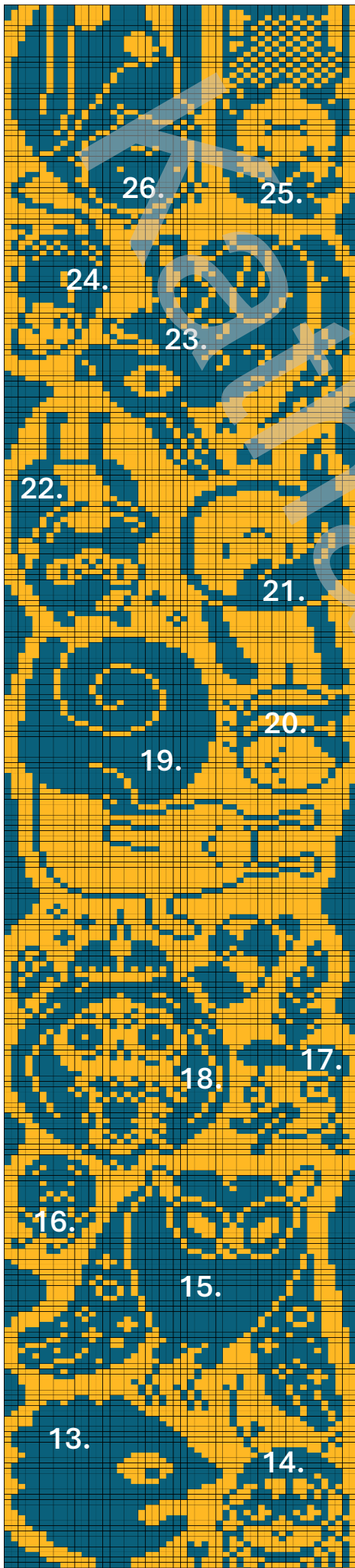
05. Lumpy Space Princess

04. Lady Rainicorn

03. Jake

02. Finn's first sword (Scarlet)

01. Finn



26. Snow Golem

25. Tiffany

24. Science

23. Fire Wolf Pup

22. Cake

21. Fionna

20. Bee

19. Waving Snail

18. Litch

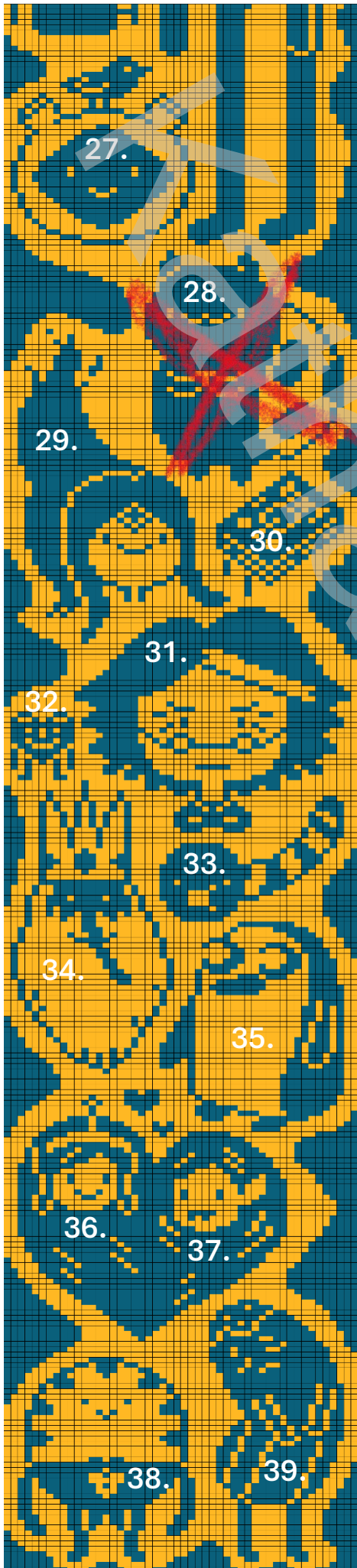
17. Choose Goose

16. Cinnamon Bun

15. Cosmic Owl

14. Huntress Wizard

13. Prismo



27. Fern

28. Slime Princess (Change) originally
Catbug

29. Flame Princess

30. The Enchiridion

31. Simon

32. Ricardio

33. Worm

34. Ice King

35. Gunter

36. Princess Bubblegum

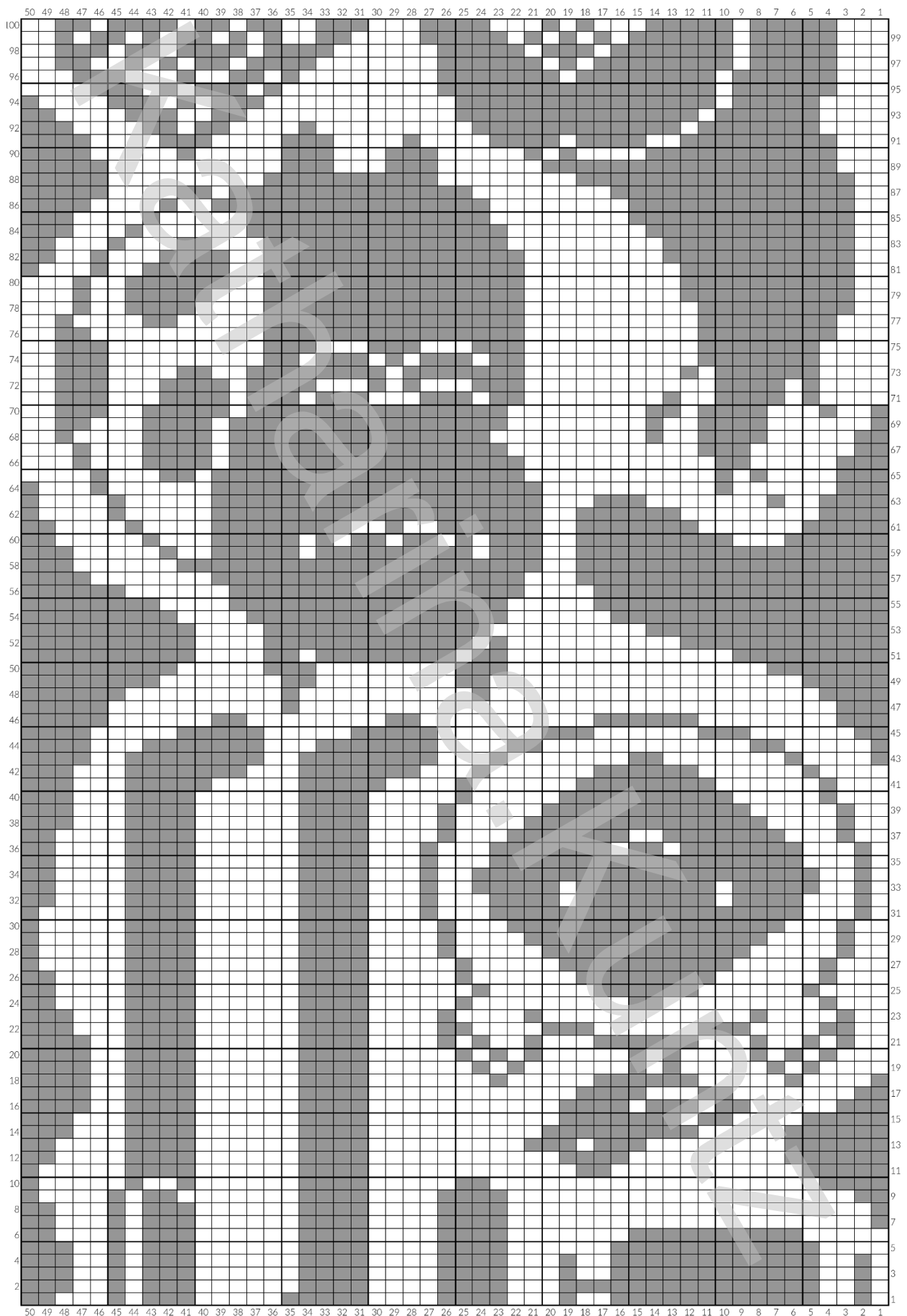
37. Marceline

38. Peppermint Butler

39. Banana Guards



Catbug Version (LB)



Catbug Version (DB)

