



Savory Knitting

Pressed Flowers Shawl

Pressed Flowers Shawl

Designed by Amy Christoffers

FINISHED MEASUREMENTS

72" across and 33" deep at the center point

After gentle blocking

MATERIALS

DK weight yarn, 548 yards main color (MC) and 448 yards contrast color (CC).

Shown in Daughter of a Farmer Juicy DK

(100% superwash wool; 274 yards/100g):

Gary Cooper (MC), Fancy Dance'n' (CC), 2 skeins each.

Needles

US 6/4mm: circular 32" or longer

Notions required

Waste yarn for provisional cast on, 2 stitch markers, tapestry needle.

Gauge

20 stitches and 38 rows = 4" in Pattern stitch after blocking



For pattern assistance email savoryknitting@gmail.com

ABBREVIATIONS

CC	Contrast color
K	Knit
ML	Make 1 left leaning
Mr	Make 1 right leaning
MC	Main color
P	Purl
S1b	(RS) Slip 1 stitch with yarn in back
S1f	(WS) Slip 1 stitch with yarn in front
S3b	(RS) Slip 3 stitches with yarn in back
S3f	(WS) Slip 3 stitches with yarn in front
Sm	Slip marker
RS	Right side
WS	Wrong side
YO	Yarn over

NOTES

Rows 1-24 of the pattern are both written and charted.

The pattern repeat and border are charted.

Only 1 color is used per row, the slipped stitches are shown on the charts (pages 6 & 7) as they appear in the color from the row below.

SHAWL

With MC using a provisional cast on, cast on 6 stitches.

Next row: K3, pm, yo, pm, k3-7 stitches on the needle.

Next row: Knit.

Join CC

(Rows 1-24 are shown on the Set Up chart on page 6)

Row 1 (With CC): K1, S1b, Mr, S1b, ML, slip marker, S1b, slip marker, Mr, S1b, ML, S1b, k1—4 stitches increased.

Row 2: K1, S1f, k1, S1f, k1, slip marker, S1f, slip marker, k1, S1f, k1, S1f, k1.

Row 3 (With MC): K2, Mr, knit to the marker, M1, sm, k1, sm, Mr, knit to the last 2 sts, ML, k2—4 stitches increased.

Row 4: Knit.

Row 5 (With CC): K1, S1b, Mr, [S1b, k1] twice, S1b, ML, slip marker, S1b, slip marker, Mr, [slip 1 with yarn in back, k1] twice, S1b, ML, S1b, k1—4 stitches increased.

Row 6: [K1, S1f] to 1 stitch before the marker, k1, slip marker, S1f, slip marker, [K1, S1f] to the last stitch, k1.

Pressed Flowers Shawl

Row 7 (With MC): K2, Mr, knit to the marker, M1, sm, k1, sm, Mr, knit to the last 2 sts, ML, k2—4 stitches increased.

Row 8: Knit.

Row 9 (With CC) K1, S1b, Mr, S1b, k1, S1b, k3, S1b, k1, S1b, ML, sm, S1b, sm, Mr, S1b, k1, S1b, k3, S1b, k1, S1b, ML, S1b, k1.

Row 10 (With CC) K1, S1f, k1, S1f, k1, S1f, p3, S1f, k1, S1f, kl, sm, S1f, sm, k1, S1f, k1, S1f, p3, S1f, k1, S1f, k1, S1f, k1.

Row 11 (With MC): K2, Mr, k4, S3b, k4, ML, sm, k1, sm, Mr, k4, S3b, k4, ML, k2—4 stitches increased.

Row 12 (With MC): K7, S3f, knit to marker, sm, k1, sm, k5, S3f, knit to end.

Row 13 (With CC) K1, S1b, Mr, S1b, k1, S1b, k7, S1b, k1, S1b, ML, sm, S1b, sm, Mr, S1b, k1, S1b, k7, S1b, k1, S1b, ML, S1b, k1—4 stitches increased.

Row 14: [K1, S1f] three times, p7, [S1f, k1] twice, sm, S1f, sm, [k1, S1f] twice, p7, [S1f, k1] three times.

Row 15 (With MC): K2, Mr, k4, S3b, k1, S3b, k4, ML, sm, k1, sm, Mr, k4, S3b, k1, S3b, k4, ML, k2—4 stitches increased.

Row 16: K7, S3f, k1, S3f, knit to marker, sm, k1, sm, k5, S3f, k1, S3f, knit to end.

Row 17 (With CC) K1, S1b, Mr, [S1b, k1] twice, S1b, k7, [S1b, k1] twice, S1b, ML,

sm, S1b, sm, Mr, [S1b, k1] twice, S1b, k7, [S1b, k1] twice, S1b, ML, S1b, k1—4 stitches increased.

Row 18: [K1, S1f] four times, p7, [S1f, k1] three times, sm, S1f, sm, [K1, S1f] three times, p7, [S1f, k1] four times.

Row 19 (With MC): K2, Mr, k8, S3b, k8, ML, sm, k1, sm, Mr, k8, S3b, k8, ML, k2—4 stitches increased.

Row 20: K11, S3f, knit to marker, sm, k1, sm, k9, S3f, knit to end.

Row 21 (With CC) K1, S1b, Mr, [S1b, k1] four times, S1b, k3, [S1b, k1] four times, S1b, ML, sm, S1b, sm, Mr, [S1b, k1] four times, S1b, k3, [S1b, k1] 4 times, S1b, ML, S1b, k1—4 stitches increased.

Row 22: [K1, S1f] six times, p3, [S1f, k1] five times, sm, S1f, sm, [K1, S1f] five times, p3, [S1f, k1] six times.

Row 23, (With MC): K2, Mr, knit to the marker, M1, sm, k1, sm, Mr, knit to the last 2 sts, ML, k2—4 stitches increased.

Row 24: Knit.

Begin Pattern Repeat

Rows 25, 29, 33, 37, 41, 45, 49, and 53

(With CC): K1, S1b, work Pattern Chart to

the marker, sm, S1b, sm, work Pattern Chart to last 2 stitches, S1b, k1—4 stitches are increased.

Rows 26, 30, 34, 38, 42, 46, 50 and 54: K1, S1f, work Pattern Chart to the marker, sm, S1f, sm, work Pattern Chart to last 2 stitches, S1f, k1.

Rows 27, 31, 35, 39, 43, 47, 51, and 55, (With MC): K2, work Pattern Chart to the marker, sm, k1, sm, work Pattern Chart to last 2 stitches, k2—4 stitches are increased.

Rows 28, 32, 36, 40, 44, 48, 52 and 56: K2, work Pattern Chart to the marker, sm, k1, sm, work Pattern Chart to last 2 stitches, k2.

Work the rows 25–56 4 times more.

There will be two additional repeats of the 16-stitch pattern repeat on each subsequent repeat of the chart (indicated with the black box on the chart).

BORDER

Rows 57, 61, 65, 69, 73, 77, 81, 85, 89, and 93 (With CC): K1, S1b, work Border Chart to the marker, sm, S1b, sm, work Border Chart to last 2 stitches, S1b, k1—4 stitches are increased.

Rows 58, 62, 66, 70, 72, 74, 78, 82, 86, 90, and 94: K1, S1f, work Border Chart to the

marker, sm, S1f, sm, work Border Chart to last 2 stitches, S1f, k1.

Rows 59, 63, 67, 71, 75, 79, 83, 87, 91 and 95 (With MC): K2, work Border Chart to the marker, sm, k1, sm, work Border Chart to last 2 stitches, k2—4 stitches are increased.

Rows 60, 64, 68, 72, 76, 80, 84, 88, 92, and 96: K2, work Border Chart to the marker, sm, k1, sm, work Border Chart to last 2 stitches, k2.

With MC, knit 2 rows.

FINISHING

Break yarn leaving a tail several yards long for sewn bind off. Thread the tail on a tapestry needle, *insert the tapestry needle purl wise through the first 2 stitches on the needle, pull the yarn all the way through. Insert the tapestry needle knit wise through the first stitch on the needle, pull the yarn all the way through and drop the stitch off the needles. Repeat from * until all the stitches have been bound off.



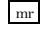
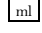
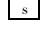


Place the stitches from the provisional cast on back on the needles and divide first 3 on one needle, last 3 on the other. Graft the stitches together with the yarn end threaded on a tapestry needle using Kitchener stitch.

Savory Knitting Pressed Flowers Shawl

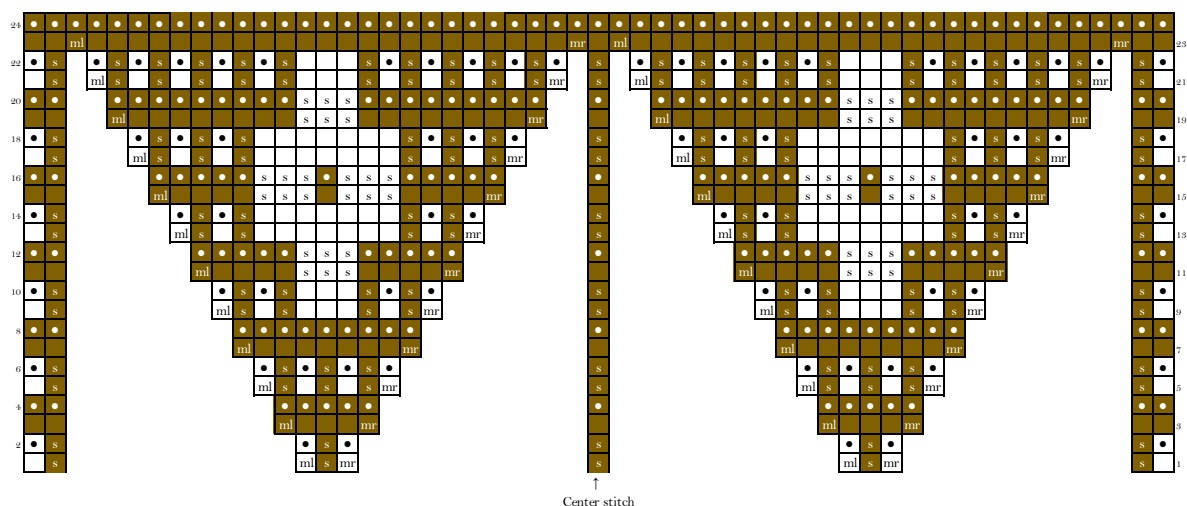
Weave in ends, block as desired.

Chart Note: only 1 color is used per row, the slipped stitches are shown here as they appear in the color from the row below.

Chart Key

-  Knit on RS, purl on WS
-  Purl on RS, knit on WS
-  Make 1 right
-  make 1 left
-  slip stitch with yarn in back on the RS, Slip stitch with yarn in front on the WS
-  MC
-  CC

Set up chart



Repeat Chart

