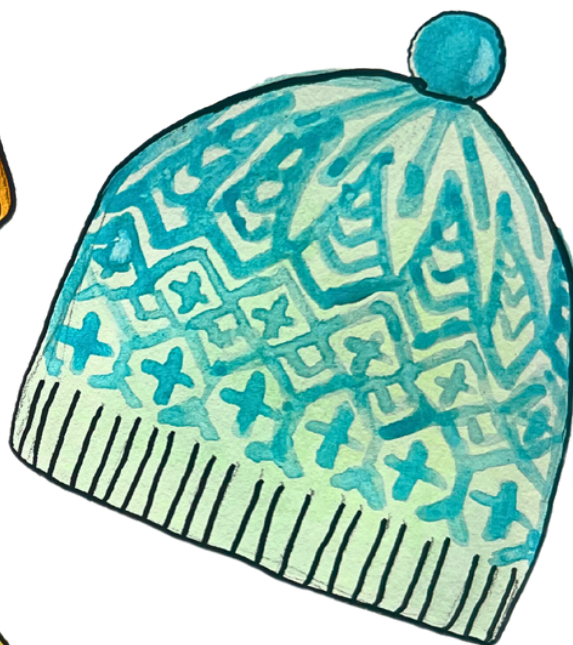


SACRED SHEEP HAT



BY CAITLIN HUNTER

BOYLAND
KNITWORKS

SACRED SHEEP HAT



The Sacred Sheep Hat is an uncomplicated and enjoyable knit that can be modified to fit different sizes and styles, ranging from toddler to adult large- from skull cap to slouchy beanie. The pattern is remarkably versatile, allowing the use of fingering, DK, or worsted weight yarn, with the option of incorporating 2 or more colors. This flexibility offers a vast array of possibilities for customization. You can choose between a simple short brim, single-fold or a long, double-fold brim for maximum coziness.

MATERIALS

Pictured sample is worsted weight with a double-fold brim and uses:

Ritual Dyes Elder
100% Rambouillet wool
190 yards [173 meters] 100 grams
worsted weight

Colors used in sample:

Brim Color: Jewelweed
C1: Obsidian
C2: Bone

OR at least 2 colors of fingering, DK or worsted weight yarn suitable for colorwork. See yardage for estimates of amounts required

Needles:

Note that needle sizes are suggested only. You may need to use a different size to achieve gauge.

Fingering (DK, Worsted)

- One 16" circular needle, US size 2 (4, 6) [2.75, 3.5, 4.0 mm] (or 1-2 sizes smaller than needle required to get gauge)
- One 16" circular needle, US size 3 (6, 8) [3.25, 4.0, 5.0 mm] (or size required to get gauge)
- US size 3 (6, 8) [3.25, 4.0, 5.0 mm] DPNs or a longer circular needle for Magic Loop method for crown shaping

Notions:

Stitch marker, scrap yarn or stitch holders, tapestry needle, row counter (optional)

Gauge:

Fingering (DK, Worsted)

30 (24, 20) sts and 34 (30, 22) rounds = 4" [10 cm] in colorwork and stockinette on main needles after blocking

Note- You should always knit your swatch the same way that the pattern is knit—in this case, in the round. Block your swatch as you will your finished garment and allow it to dry fully before measuring.

Yardage: Because of the number of variations possible with this hat, providing exact yardage isn't feasible. 130 yards of each color will be sufficient for any size if making the worsted weight. If making DK, I would recommend 150 yards of each color. For fingering weight, 200 yards of each color will be plenty! Remember, this pattern is designed to be a great stash buster!

Sizes

The hat is designed to be worn with 1-2" [2.5-5 cm] of negative ease. Measurements are given for finished (unstretched) circumference. Depth will depend on the brim type and crown height you choose, as described later in the pattern.

Fingering Weight:

1, 2, 3, 4, 5:

Circumference: 14.5, 16, 17.75, 19.25, 21" [37, 41, 45, 49, 53.5 cm]

DK Weight:

(6, 7, 8, 9, 10):

Circumference: 14, 16, 18, 20, 22" [36, 41, 46, 56 cm]

Worsted Weight:

{11, 12, 13, 14}:

Circumference: 14.5, 17, 19.25, 21.75" [37, 43.5, 49, 55.5 cm]

SACRED SHEEP HAT

DIRECTIONS

With the ribbing needles and Brim Color, CO 108, 120, 132, 144, 156 (84, 96, 108, 120, 132) {72, 84, 96, 108} sts using your preferred cast-on method. Sample uses Long Tail Cast-On. Join in the round and place marker to indicate BOR, taking care not to twist sts.

Ribbing

You can choose to make a short brim, single fold or double fold brim.

Round 1: *K1, p1; repeat from * to BOR.

Repeat Round 1 until work measures:

Short Brim: 1.5" [4 cm] from cast on edge.

Single Fold Brim: 4" [10 cm]

Double Fold Brim: 8" [20.5 cm]

Switch to main gauge needles, switch to C1 if working a contrasting brim.

Chart

Begin working the crown chart as shown on page 3, changing colors and making decreases as shown. Choose the crown height for your desired fit, noting the measurements listed below for your yarn weight: Fingering (DK, Worsted)

Short Crown: 4.5 (5, 6.75)" [11.5, (13, 17) cm]

Medium Crown: 5 (6.5, 8)" [13, (16.5, 20.5) cm]

Tall Crown: 6.75 (8.75, 10.75)" [17, (22.5, 27.5) cm]

Change to preferred needles for small circumference knitting when necessary.

18, 20, 22, 24, 26 (14, 16, 18, 20, 22) {72, 14, 16, 18} sts

Finishing

Thread tapestry needle with yarn tail, and thread through remaining sts twice, pulling tight to close crown of hat.

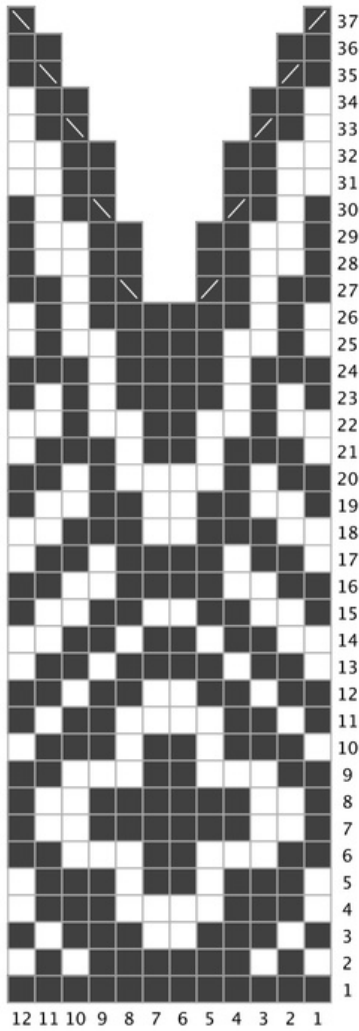
Weave in ends. Steam or wet-block hat to finished measurements. Trim ends once dry.

I like to soak my hats in cool water and wool wash, gently squeeze dry, and then allow to dry on a balloon that's been inflated to approximately the circumference of the wearer's head.

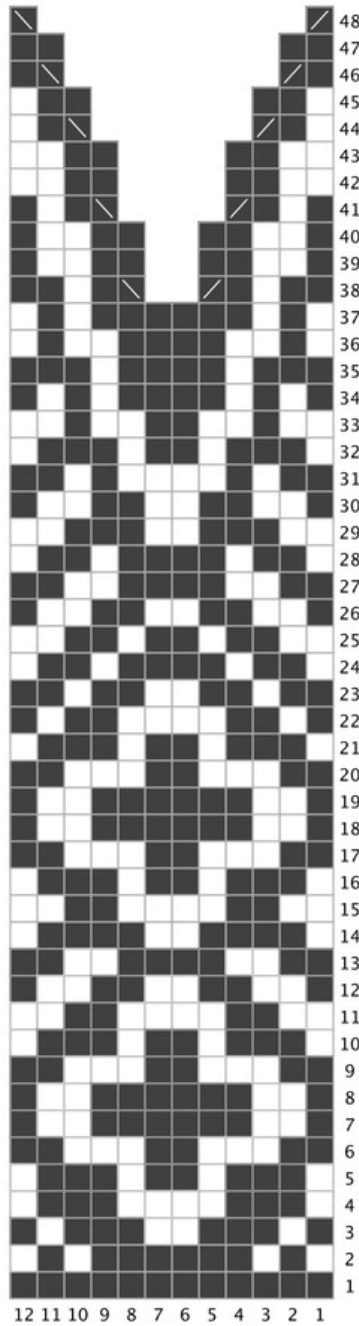
SACRED SHEEP HAT

CROWN CHARTS

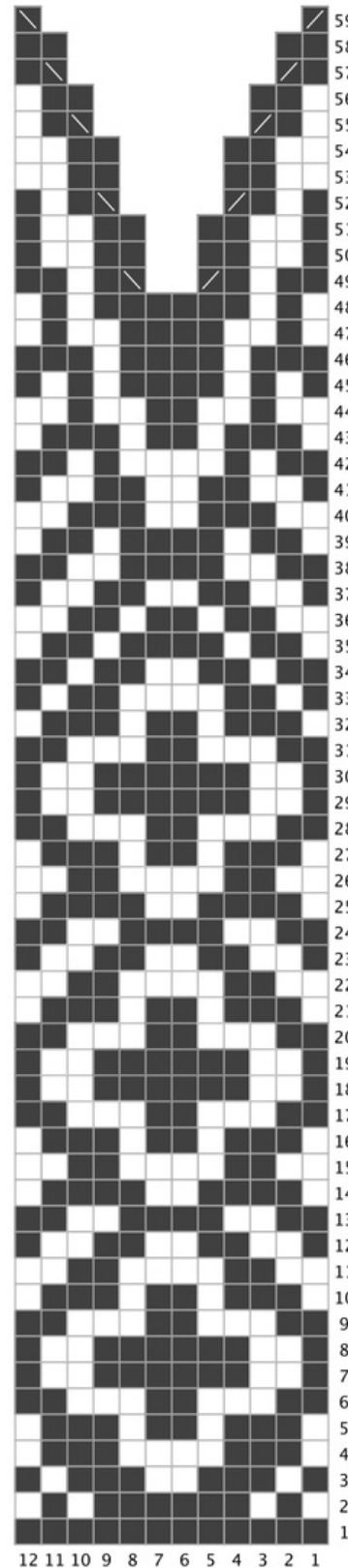
short crown



medium crown



tall crown



key



SACRED SHEEP HAT

ABBREVIATIONS

BOR	Beginning of round
C1 (2)	Color 1 (2)
CO	Cast on
K	knit
k2tog	knit 2 together
P	purl
ssk	slip, slip, knit
st(s)	stitch(es)

SACRED SHEEP HAT



For pattern support, please visit my Ravelry Group,
Boyland Knitworks. You can contact the designer at
boylandknitworks@gmail.com.

Find more designs by Caitlin Hunter at
www.boylandknitworks.com

On Ravelry as: [boylandknitworks](#)

Follow me on Instagram: [boylandknitworks](#)

Share your finished objects and see others on social
media with the tags [#boylandknitworks](#) and
[#sacredsheephat](#)

Thank you for supporting independent design!

