



# SEVERNSIDE BEANIE

a pattern by Annabel Williams



# SEVERNSIDE BEANIE

---

Thank you for choosing to knit the Severnside Beanie, a design that captures the beauty of the River Severn, flowing near the edge of the forest where I live. This pattern is part of the Severnside set, which also includes a pair of mitts. Inspired by the ever-changing views of the river, the beanie features a cable motif that mimics the river's winding path. Inside the motif, you'll find a delicate seed stitch detail, adding texture and depth, while a column of twisted stitches frames the design, symbolising the steady banks that guide the river.

Designed with my Perendale DK yarn, a 100% Perendale wool sourced from a wonderful farm in Darwin, Falkland, and spun in Devon, UK, the Severnside Beanie offers warmth and softness. The yarn's texture beautifully highlights the cable pattern, making each twist and turn stand out.

The Severnside Beanie is worked in the round from the bottom up, beginning with a double-folded ribbed brim for extra warmth. As you progress, you'll find a rhythmic flow of the cables, a process that mirrors the calming influence of the river. Wear it on a brisk walk through the forest and it'll soon become a cherished piece. Pair it with the Severnside Mitts for a coordinated look that brings a piece of the river's magic into your knitting.



Sizes: 1 (2, 3)

Finished measurements:

To fit head: 49-52 (53-57, 58-62) cm [19.25-20.5 (20.75-22.5, 22.75-24.5)],

Small (Adult M, Adult L)

Finished beanie body circumference: 44 (48, 54) cm [17.25 (19, 21.25)]

Needles: 3.5 mm (US 4) double-pointed needles or 80 cm [32"] circular needles for magic loop. Cable needle if not using the 'no cable needle' method.

Gauge: 21 sts & 30 rnds = 10 cm [4"] in Reverse Stockinette stitch

26-st cable = 9 cm [3.5"]

Notions: Sewing needle, stitch markers.

Yarn: Annabel Williams Perendale DK (DK weight, 100% wool, 245m/268 yds per 100g/3.5oz skein) 1, (1, 1) skeins.

Or approx. 180 (210, 237) m / 197 (230, 260) yds of DK weight yarn.

### Notes before you begin

Please read the pattern carefully before you start.

If you prefer to follow written instructions instead of using the chart, see the written instructions - starting with the row given in the instructions at each section. Charts are available on page 4. Written instructions are available on page 5.

Pay close attention to the instructions in the crown decrease section - it's important not to miss any decreases that should be worked simultaneously with the crown decrease chart or written instructions.

If adding a pom pom to size 3, leftover yarn from the mitts will be sufficient if working both patterns. If only working the beanie, an additional skein is required.

Cables and how to videos: [Sevenside set tutorials](#)

## INSTRUCTIONS

Using the long-tail method, cast on 124 (132, 144) sts. Being careful not to twist sts, join in the rnd and pm for BOR.

### Brim section

Work in (k1, p1tbl) twisted rib for 14 (15, 15) cm [5.5 (6, 6)].



## Body of the beanie

Start working cable chart or cable written instructions from Row 1 (10, 7), as follows: \*p 5 (7, 10), pm (m's are for decreasing later), work cable chart or cable written instructions over next 26 sts; rep from \* 3 more times to BORM.

You will maintain 5 (7, 10) p sts before each 26 st cable repeat until you reach the crown decreases.

Work even until the body of your beanie measures 10 (11, 10) cm [4 (4.25, 4)].

**Sizes 1 and 2**, end with Row 6 of the cable chart or cable written instructions

### Size 3 only

Start decreasing in reverse stockinette as follows:

Dec rnd: \*p2tog, p to 2 sts before m, p2tog, slm, work chart; rep from \* 3 times (8 sts dec'd). Then work even until beanie measures 12 cm [4.75"], ending with Row 6 of cable chart or cable written instructions.

## Begin decreasing the crown of your beanie.

### Note

It's recommended that you read the decrease section before you continue. It can be easy to miss instructions to make additional decreases during your knitting.

### All sizes

Start working crown decrease chart or crown decrease written instructions from rnd 1.

Crown decrease rnds are worked as follows: \*p to m, slm, work decrease chart or written instructions; rep from \* 3 times

to BORM.

Simultaneously work decreases in reverse stockinette at Rnd 4 of the crown decrease chart or crown decrease written instructions as follows: Dec rnd: \*p2tog, p to 2 sts before m, p2tog, slm, work chart; rep from \* 3 times. (8 sts dec'd)

Working as established, rep Dec rnd every 5 (4, 4) rnds 1 (2, 2) more time(s) = 1 (1, 2) purl st(s) between cables. When you have only 3 purl sts, p3tog instead of 2 p2tog.

### Size 3 only:

Row 15 of the crown decrease chart or crown decrease written instructions, p2tog between cables = 1 purl st between 26 st cable motif.

28 sts for all sizes.

## Final decrease section

### All sizes

Remove markers as you knit, maintain the BORM.

Rnd 1: (P1, k1, p1, k2, p1, k1) × 4. (28 sts)

Rnd 2: (P1, k1, p1, k2tog, p1, k1) × 4. (24 sts)

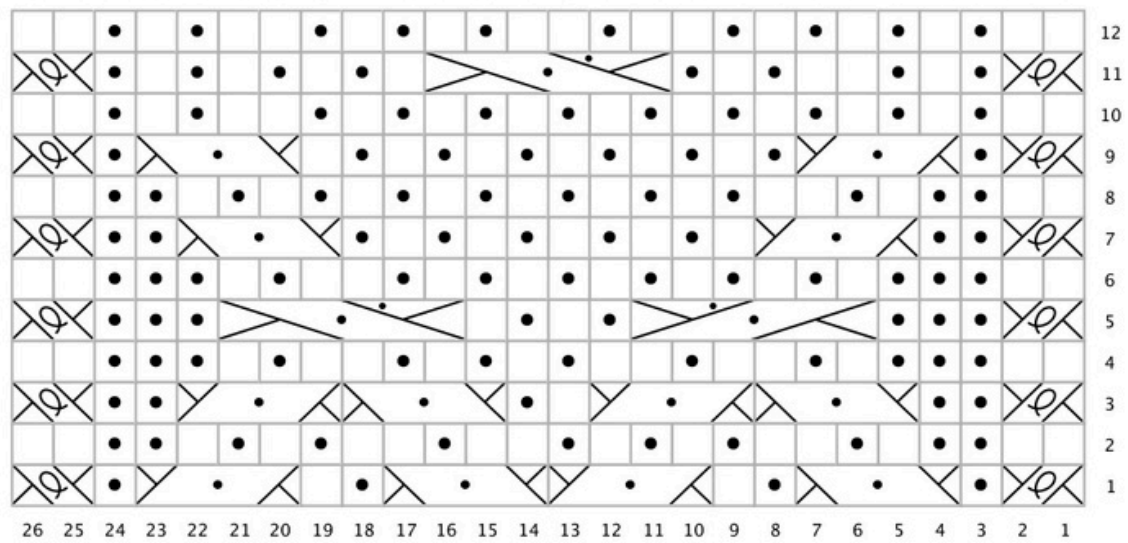
Rnd 3: k2tog until end of rnd (12 sts)

Cut yarn and pass through remaining sts.

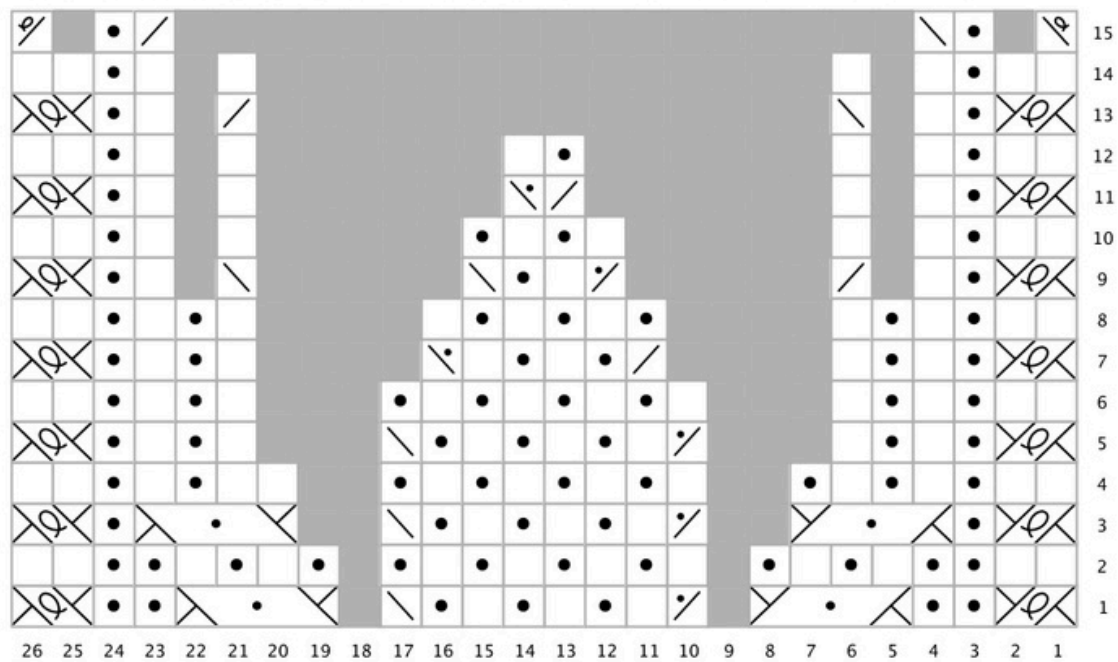
## Finishing

Weave in ends and block gently. Add a pompom for extra cosiness.

## CABLE CHART



## CROWN DECREASE CHART



## KEY

knit

purl

k2tog

p2tog

ssk

ssp

twisted ssk

twisted k2tog

grey no stitch

Left slipped twisted

Right slipped twisted

3/1 LSC

3/1 RSC

3/3 LSC

3/3 RSC

## CABLE WRITTEN INSTRUCTIONS

Rnd 1: RST, p1, (3/1 LSC, p1, k1, 3/1 RSC) x 2, p1, LST.  
Rnd 2: k2, p2, k1, p1, k2, (p1, k1) x 2, (p1, k2) x 2, (p1, k1) x 2, p2, k2.  
Rnd 3: RST, p2, 3/1 LSC, 3/1 RSC, k1, p1, 3/1 LSC, 3/1 RSC, p2, LST.  
Rnd 4: k2, p3, k1, (p1, k2) x 2, (p1, k1) x 2, p1, k2, p1, k1, p3, k2.  
Rnd 5: RST, p3, 3/3 RSC, (p1, k1) x 2, 3/3 LSC, p3, LST.  
Rnd 6: k2, p3, (k1, p1) x 6, k2, p1, k1, p3, k2.  
Rnd 7: RST, p2, 3/1 RSC, (k1, p1) x 5, 3/1 LSC, p2, LST.  
Rnd 8: k2, p2, k1, p1, k2, (p1, k1) x 7, p2, k2.  
Rnd 9: RST, p1, 3/1 RSC, (p1, k1) x 6, 3/1 LSC, p1, LST.  
Rnd 10: k2, (p1, k1) x 8, p1, k2, p1, k1, p1, k2.  
Rnd 11: RST, p1, k1, p1, k2, p1, k1, p1, 3/3 LSC, (k1, p1) x 4, LST.  
Rnd 12: k2, (p1, k1) x 3, (p1, k2) x 2, p1, k1, (p1, k1, p1, k2) x 2.

## CROWN DECREASE WRITTEN INSTRUCTIONS

Rnd 1: RST, p2, 3/1 RSC, p2tog, (k1, p1) x 3, ssk, 3/1 LSC, p2, LST. (24 sts)  
Rnd 2: K2, p2, (k1, p1) x 5, k1, p2, k1, p1, k1, p2, k2.  
Rnd 3: RST, p1, 3/1 RSC, p2tog, (k1, p1) x 3, ssk, 3/1 LSC, p1, LST. (22 sts)  
Rnd 4: K2, (p1, k1) x 6, p1, k2, p1, k1, p1, k2.  
Rnd 5: RST, (p1, k1) x 2, p2tog, (k1, p1) x 3, ssk, (k1, p1) x 2, LST. (20 sts)  
Rnd 6: K2, p1, k1, p1, k2, (p1, k1) x 5, p1, k2.  
Rnd 7: RST, (p1, k1) x 2, k2tog, (p1, k1) x 2, ssp, (k1, p1) x 2, LST. (18 sts)  
Rnd 8: K2, (p1, k1) x 4, p1, k2, p1, k1, p1, k2.  
Rnd 9: RST, p1, k1, k2tog, p2tog, k1, p1, ssk x 2, k1, p1, LST. (14 sts)  
Rnd 10: K2, p1, k3, p1, k1, (p1, k2) x 2.  
Rnd 11: RST, p1, k2, k2tog, ssp, k2, p1, LST. (12 sts)  
Rnd 12: (K2, p1) x 2, k3, p1, k2.  
Rnd 13: RST, p1, k1, ssk, k2tog, k1, p1, LST. (10 sts)  
Rnd 14: K2, p1, k4, p1, k2.  
Rnd 15: Twisted ssk, p1, ssk, k2tog, p1, twisted k2tog. (6 sts)

# ABBREVIATIONS AND CABLES

BOR	beginning of round
BORM	beginning of round marker
dec('d)	decrease(d)
inc('d)	increase(d)
k	knit
k2tog	knit 2 sts together
kfb	knit in front and back of st
m	marker
p	purl
p1tbl	purl 1 through back loop
p2tog	purl 2 sts together
pm	place marker
rnd(s)	round(s)
slm	slip marker
ssk	slip 2 sts knitwise, one at a time, insert left needle into 2 slipped sts and knit them together
ssp	slip 2 sts knitwise, one at a time, return 2 sts onto left needle and purl them through back loop
st(s)	stitch(es)
tbl	through back loop
twisted k2tog	slip 1 st purlwise, slip 1 st knitwise, slip back 2 sts onto left needle and knit them together.
twisted ssk	knit 2 sts together through back loop
LST	Left slipped twisted Slip 2 sts one at a time knitwise to right-hand needle, slip second st on right-hand needle over first st onto tip of left-hand needle, insert left-hand needle from back to front into st on right-hand needle and knit this st tbl, then knit st on left-hand needle tbl.
RST	Right slipped twisted Slip second st on left-hand needle over first st and onto tip of left-hand needle, k2 (slipped st and following st).
3/1 LSC	3 over 1 Left Seeded Cross. Slip 3 sts to cable needle, hold to front, k1, (k1, p1, k1) from cable needle.
3/1 RSC	3 over 1 Right Seeded Cross. Slip 1 st to cable needle, hold to back, k1, p1, k1, k1 from cable needle.
3/3 LSC	3 over 3 Left Seeded Cross. Slip 3 sts to cable needle, hold to front, k1, p1, k1 (k1, p1, k1) from cable needle.
3/3 RSC	3 over 3 Right Seeded Cross. Slip 3 sts to cable needle, hold to back, k1, p1, k1 (k1, p1, k1) from cable needle.

Alternatively, see videos for how to work cables: [Sevenside set tutorials](#)





[Severnside Beanie] © Annabel Williams

All rights reserved. FOR PERSONAL USE ONLY

[www.annabelwilliams.co.uk](http://www.annabelwilliams.co.uk)  
Instagram: @annabel\_textiles

Share your Severnside Beanie on Instagram by tagging  
#annabelwilliams #severnsidebeanie

