

SWEATERFREAK

RITCHIE SHAWL

Dedicated to Dennis Ritchie – thank you for your inventions!



YARN

Miss Babs Yummy 2-ply – 100% merino; 400 yards (366 meters) per 113 grams (3.99 oz).

MC: 800 yards

CC: 350 yards

Sample shown worked in Daguerrotype(MC) and Pewter(CC)

YARN WEIGHT

Fingering, approximately 400 yards per 100 g skein

NEEDLES

US#4/3.50mm - 32"/80cm circular needles

TOOLS

3 markers, tapestry needle.

GAUGE

22 sts per 4" (10cm) with US#4/3.50mm needles in Garter stitch blocked

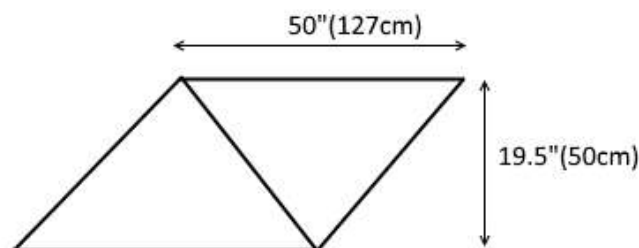
FINISHED MEASUREMENTS

Length along the top: 50" (127cm)

Width: 19.5" (50cm)

NOTES

The shawl starts as a classic top-down triangle. When the desired height is reached, the left side stitches get bound off and right-hand side stitches are cast on to decrease. The shawl is totally symmetric, and no joining of triangles required!



INSTRUCTIONS

Garter Tab Cast On

With MC, CO 3 sts, knit 6 rows, k3, then pick into each of the 3 garter ridges along the selvage edge, and finally pick up and knit 3 sts from the cast on edge. See *References* for details. (9 sts)

Set Up Rows

Row 1(WS): k3, kfb, k1, kfb, k3 (+2 sts)

Row 2(RS): k2, PM, m1r, k3, m1r, PM(center), k1, m1l, k3, m1l, PM, k2 (+4 sts)

Row 3(WS): knit

You should have 15 sts total; (2 border sts) 5 (1 center st) 5 (2 border sts)

Part 1

In this part, you will be knitting a classic top-down triangle where every other row gets increased by 4 sts total, 2 sts on each side all throughout.

Garter Stitch Increases (+4 sts, 2 on each side)

Row 1(RS): k2, SM, m1r, k to M, m1r, SM, k1, m1l, k to M, m1l, SM, k2

Row 2(WS): knit

Work Garter Rows 1 & 2 thirty times total; (2 border sts) 65 (1 center st) 65 (2 border sts)

Slipped Rib Stitch Increases

Row 1(RS): k2, SM, m1r, (p2, k1) to 2 sts before M, p2, m1r, SM, k1, m1l, p2, (k1, p2) to M, m1l, SM, k2

Row 2(WS): k2, SM, (sl1wyf, k2) to 2 sts before M, sl1wyf, k1, SM, sl1wyf, (k2, sl1wyf) to M, SM, k2

Row 3(RS): k2, SM, m1r, k1, (p2, k1) to M, m1r, SM, k1, m1l, (k1, p2) to 1 st before M, k1, m1l, SM, k2

Row 4(WS): k2, SM, k1, (sl1wyf, k2) to 3 sts before M, sl1wyf, k2, SM, k1, (sl1wyf, k2) to 2 sts before M, sl1wyf, k1, SM, k2

Row 5(RS): k2, SM, m1r, p1, (k1, p2) to 2 sts before M, k1, p1, m1r, SM, k1, m1l, p1, (k1, p2) to 2 sts before M, k1, p1, m1l, SM, k2

Row 6(WS): k2, SM, (k2, sl1wyf) to 3 sts before M, k3, SM, k2, (sl1wyf, k2) to M, SM, k2

Work Slipped Rib Increases Rows 1 – 6 twice total. (2)77(1)77(2)

Work Garter Increase Rows 1 & 2 twice (2)81(1)81(2)

Work Rows 1 - 32 of Garden Plot Mosaic Stitch Charts 1A/B on **Page 5** once, then Rows 1 – 30 once. Please refer to Notes on **Page 4** on how to work mosaic charts.

62 sts added to each side (2)143(1)143(2)

Work Garter Stitch Increases Rows 1 & 2 by alternating MC/CC stripes 13 times as follows: 2 rows of MC then 2 rows of CC and so on. (2)169(1)169(2)

Last stripe should have been in MC, cut MC, then work Garter Row 1(RS) in CC. (2)171(1)171(2)

Part 2

Next, you will be binding off the left side stitches, then casting on stitches on the right-hand side to decrease later!

Next Row(WS): BO 2 sts, RM, BO to M(center), RM, BO 1 st, k to M, RM, k1, kfb, PM(new center), using Backwards loop cast on method (see *References*), CO 173 sts.

Note on the Bind Off Method:

Feel free to use any bind off method that gives you a relaxed edge that is not too tight. Please keep in mind that you will have 1 stitch carry over from binding off.

Join MC.

Next Row(RS, with MC): k2, PM, k2tog, k to 2 sts before M(center), k2tog, SM, k1, k2tog, k to last 4 sts, k2tog, PM, k2
Knit one row with MC. (2)169(1)169(2)

Garter Stitch Decreases (-4 sts, 2 on each side)

Row 1(RS): k2, SM, k2tog, k to 2 sts before M, k2tog, SM, k1, k2tog, k to 2 sts before M, k2tog, SM, k2

Row 2(WS): knit

Work Garter Stitch Decreases Rows 1 & 2 by alternating CC/MC stripes 12 times as follows: 2 rows of MC then 2 rows of CC and so on. Last stripe should be MC. (2)145(1)145(2)

Work Rows 1 - 32 of Garden Plot Mosaic Stitch Charts 2A/B on **Page 6** once, then Rows 1 - 30 once.
Please refer to Notes on **Page 4** on how to work mosaic charts.

62 sts eliminated from each side (2)83(1)83(2)

Cut CC. Continue with MC. Work Garter Stitch Decreases Rows 1 & 2 3 times. (2)77(1)77(2)

Slipped Rib Stitch Decreases

Row 1(RS): k2, SM, p2tog, (k1, p2) to 3 sts before M, k1, p2tog, SM, k1, p2tog, (k1, p2) to 3 sts before M, k1, p2tog, SM, k2

Row 2(WS): k2, SM, k1, (sl1wyf, k2) to M, SM, k1, (sl1wyf, k2) to 2 sts before M, sl1wyf, k1, SM, k2

Row 3(RS): k2, SM, k2tog, (p2, k1) to 4 sts before M, p2, skp, SM, k1, k2tog, (p2, k1) to 4 sts before M, p2, skp, SM, k2

Row 4(WS): k2, SM, sl1wyf, (k2, sl1wyf) to 1 st before M, k1, SM, (sl1wyf, k2) to 1 st before M, sl1wyf, SM, k2

Row 5(RS): k2, SM, p2tog, p1, (k1, p2) to 4 sts before M, k1, p1, p2tog, SM, k1, p2tog, p1, (k1, p2) to 4 sts before M, k1, p1, p2tog, SM, k2

Row 6(WS): k2, SM, (k2, sl1wyf) to 3 sts before M, k3, SM, k2, (sl1wyf, k2) to M, SM, k2

Work Slipped Rib Decreases Rows 1 - 6 twice total. (2)65(1)65(2)

Work Garter Stitch Decreases Rows 1 & 2 31 times. Remove first and last markers. (2)3(1)3(2)

Next Row(RS): k1, k2tog twice, SM, k1, k2tog twice, k1

Knit one row

Next Row(RS): k1, k2tog, RM, k2tog twice

Next Row(WS): k2tog twice

Finishing

Cut yarn and using a tapestry needle thread it through the 2 remaining stitches, fasten off. Weave ends and block to shape.

REFERENCES

1. Garter Tab Cast On

<https://youtu.be/6Yj7AnpN2Mc>

2. Backwards loop cast on

<https://www.youtube.com/watch?v=iRIU1mXoZrg>

3. Carrying the yarn on the side when striping

<https://www.youtube.com/watch?v=eeJfbIFWZII>

4. Mosaic Stitch Primer

<https://youtu.be/deKlRY7OVtA>

ABBREVIATIONS

CO – cast on

BO – bind off

MC – main color

CC – contrast color

Rep – Repeat

sts – Stitches

k1 – knit one stitch

kfb – knit into the front of the stitch, do not slip it off the needle, then knit into the back of the same stitch

k2tog – knit 2 stitches together; right leaning decrease

p2tog – purl 2 stitches together

skp – slip, knit, pass slipped stitch over; left leaning decrease

sl – sl1wyf or sl1wyb – please refer to Mosaic Notes and demo

sl1wyf – slip stitch from left needle to right purlwise without working it with yarn held in front

sl1wyb – slip stitch from left needle to right purlwise without working it with yarn held in back

m1r – make one right. Lift strand between needles from back to front. Knit lifted loop through the front

m1l – make one left. Lift strand between needles from front to back. Knit lifted loop through the back

RS – right side

WS – wrong side

PM – place marker

SM – slip marker

RM – remove marker

() – indicates pattern repeat

MOSAIC CHART NOTES


- Mosaic charts are read from bottom to top.
- WS are not shown, therefore each charted row represents 2 rows of knitting – RS and WS
- The color of the first stitch will always determine the working color of that row and the subsequent WS row.
- RS rows are worked right to left. WS rows are worked left to right
- A charts represent stitches on the right side of the center stitch (last stitch on A charts) with RS facing
- B charts represent stitches on the left side of the center stitch with RS facing
- On all RS rows, the working color is knit and the contrasting stitches are slipped with the yarn in **back**.
- On all WS rows, the working color is knit and the contrasting stitches are slipped with the yarn in **front**.
- Be sure to pick up the working yarn from underneath when changing colors on each RS row to maintain a neat edge. See *References*.


For a Mosaic Stitch Primer video demo, see <https://youtu.be/deKIRY7OVtA>

Charts - Wrong Side Rows Note

- The WS rows are not shown on the charts, therefore each charted row represents two rows of knitting. For the WS rows, you'll simply knit and slip the same stitches as the corresponding, previous RS row.
- There are no increases or decreases on WS rows.


Key

 k/sl - see Notes

 k/sl - see Notes

 RS: k2tog; WS: k

 RS: skp; WS: k

 RS: m1r; WS: knit

 RS: m1l; WS: knit

 No stitch

 Pattern Repeat

© Jenny Faifel 2019. All Rights Reserved.

For pattern support, please email jen@sweaterfreak.com

Website: <http://www.sweaterfreak.com>

Ravelry: SweaterFreak

Instagram: @sweaterfreak

Share your projects #sweaterfreakknits

Happy knitting!

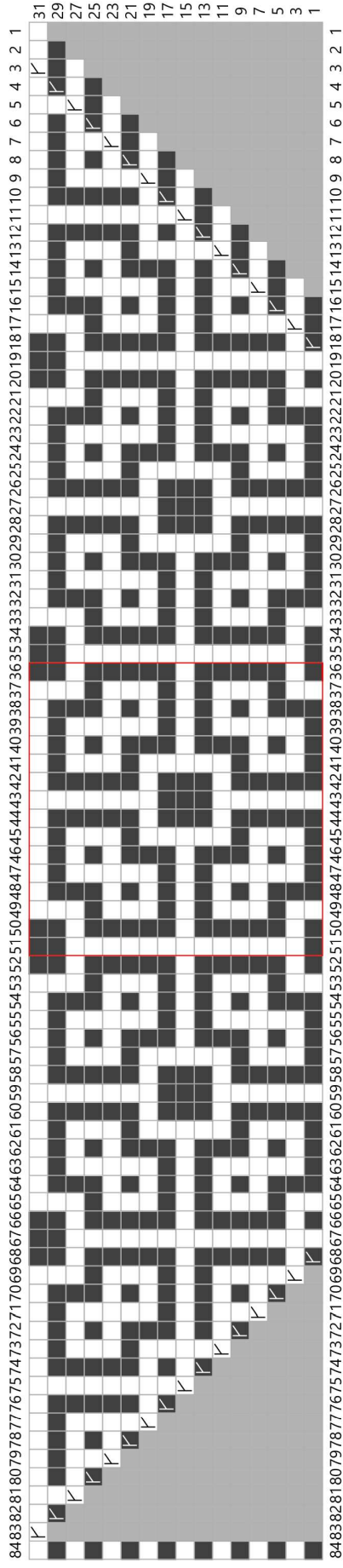


Chart 1A – right side increases, repeats are stitches 36-51(inclusive) in red

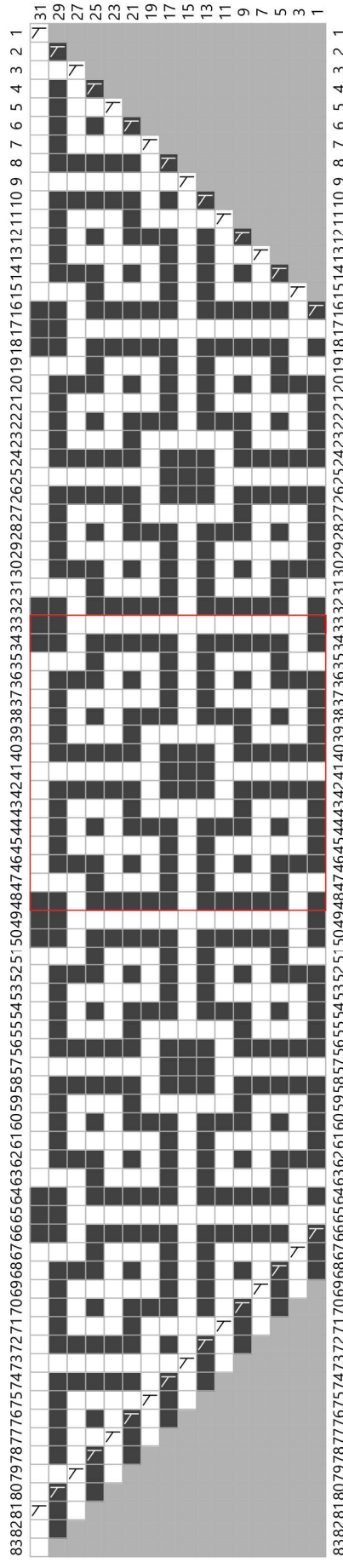


Chart 1B – left side increases, repeats are stitches 33-48(inclusive) in red

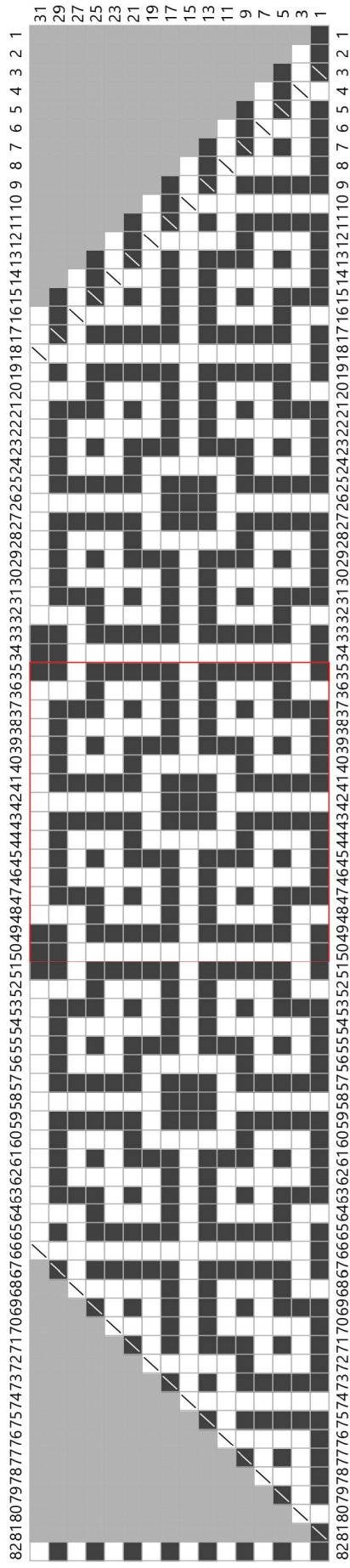


Chart 2A – right side decreases, repeats are stitches 35-50(inclusive) in red

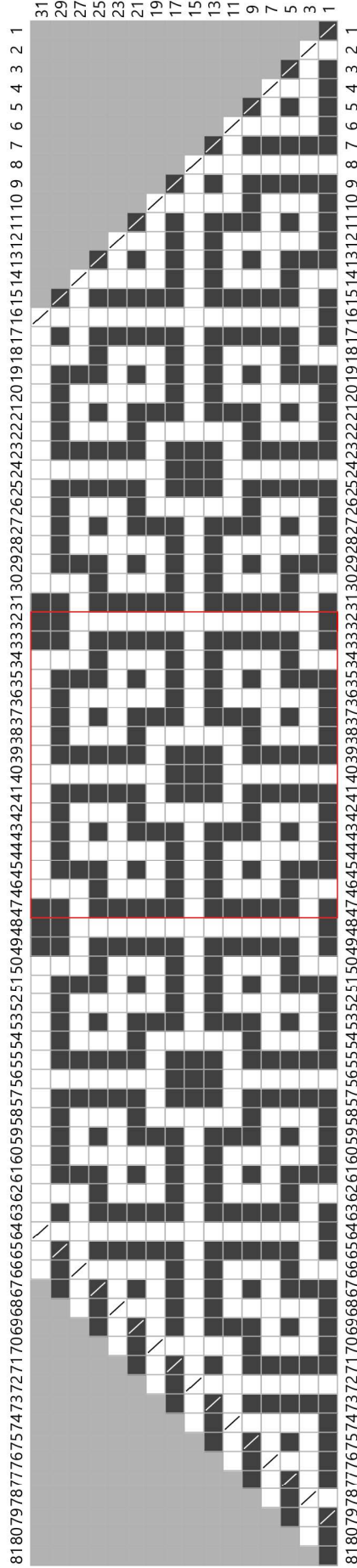


Chart 2B – left side decreases, repeats are stitches 32-47(inclusive) in red