



QUEEN BEE

A folded brim and wide cables, columns of slipped stitches and clusters of little bobbles... Choose your favorite color yarn and get ready for your new favorite hat!

The Queen Bee hat is designed especially for Annabel Williams Organic Falkland Merino DK. The colorway, Yellow Submarine, is the perfect shade for a statement hat that brightens up even the dullest of days. Annabel Williams Organic Falkland Merino DK is 100% Organic Merino wool. It is sourced from the Falkland Islands supporting small farmers who depend on wool production as their main income. The sheep have vast amounts of land to roam freely. With little or no industry in the Falkland Islands, the air is clean and green.

The hat is knitted in a round from bottom to the top. It has a folded brim but instructions for a shorter version are included.

Size

One size, to fit average woman.

Head circumference: 53-58.5 cm / 21-23 inches, intended to be worn with 3-8.5 cm / 1-3.5 inches of negative ease.

Length from brim to top: 22 cm / 8.5 inches

Yarn

1 skein of Annabel Williams Organic Falkland Merino DK, shown in Yellow Submarine. (100 % organic merino, 240 m / 100g) or equal amount of DK weight yarn.

Needles

- 3.25 mm / US 3 circular needles with 40 cm / 16" cable
- 3.5 mm / US 4 circular needles with 40 cm / 16" cable

- 3.5 mm / US 4 needles for small circumference knitting (DPNs or cable suitable for Magic Loop)
- cable needle in size 3.5 mm / US 4

Notions

- 1 stitch marker
- sewing needle

Gauge

Take all measurements after blocking, with the fabric relaxed. Do not stretch while measuring.

26 sts x 33 rounds = 10 cm over ribbing on smaller needles, in a round.

27 sts x 36 rounds = 10 cm over cable pattern on larger needles, in a round. Measurement taken approximately over round 14.

Always use the needle size that gets you the right gauge!

INSTRUCTIONS

BRIM

CO 135 sts on the smaller needles (size suggested 3.25 mm / US 3) the Long-Tail Method. Join in a round careful not to twist the ring of sts, and pm for beginning of the round. (If you want to make a smaller hat, you can leave out one pattern repeat. In this case, CO only 108 sts.)

- OPTION 1: LONG BRIM

Round 1: *P1, k2; rep from * until end.

Repeat Round 1 until the brim meas 12.5 cm / 5 inches from the CO edge.

- OPTION 2: SHORT BRIM

Round 1: *K1, p2; rep from * until end.

Repeat Round 1 until the brim meas 5 cm / 2 inches from the CO edge.

MAIN SECTION

Change to larger needles (size suggested 3.5 mm / US 4).

Work rounds 1-33 of the Main Chart. The chart repeats 5 times every round.

Round 1: *[K1, p2] x 5, k10, p2; rep from * until end.

Round 2: *[Sl1 wyib, p2] x 5, k10, p2 rep from * until end.

Repeat Rounds 1-2 one more time.

Round 5: As Round 1.

Round 6: *[MB, p2, sl1 wyib, p2] x2, mB, p2, 5/5 RC, p2; rep from * until end.

Round 7: As Round 1.

Round 8: As Round 2.

Repeat Rounds 7-8 one more time.

Round 11: As Round 1.

Round 12: *[Sl1 wyib, p2, mB, p2] x 2, sl1 wyib, p2, k10, p2; rep from * until end.

Round 13: As Round 1.

Round 14: As Round 2.

Repeat Rounds 13-14 another 5 times.

Round 25: As Round 1.

Round 26: *[Sl1 wyib, p2] x 5, 5/5 RC, p2; rep from * until end.

Round 27: As Round 1.

Round 28: As Round 2.

Repeat Rounds 27-28 another 2 times and then Round 27 one more time.



SHAPING THE CROWN

Work rounds 1-22 of the Crown Chart.

Round 1: *[S1 wyib, p2] x 5, ssk, k6, k2tog, p2; rep from * until end. *(10 sts dec'd, 125 sts rem on needles)*

Round 2: *[K1, p2] x 5, k8, p2; rep from * until end.

Round 3: *[S1 wyib, p2] x 5, k8, p2; rep from * until end.

Round 4: As Round 2.

Round 5: As Round 3.

Round 6: As Round 2.

Round 7: *[S1 wyib, p2] x 5, ssk, k4, k2tog, p2; rep from * until end. *(10 sts dec'd, 115 sts rem on needles)*

Round 8: *[K1, p2] x 5, k6, p2; rep from * until end.

Round 9: *[S1 wyib, p2] x 5, 3/3 RC, p2; rep from * until end.

Round 10: As Round 8.

Round 11: *[S1 wyib, p2] x 5, k6, p2; rep from * until end.

Round 12: As Round 8.

Round 13: As Round 11.

Round 14: *[K1, p2] x 5, ssk, k2, k2tog, p2; rep from * until end. *(10 sts dec'd, 105 sts rem on needles)*

Round 15: *[S1 wyib, p2] x 5, k4, p2; rep from * until end.

Round 16: *[K1, p2tog] x 5, k4, p2tog; rep from * until end. *(30 sts dec'd, 75 sts rem on needles)*

Round 17: *[S1 wyib, p1] x 5, 2/2 RC, p1; rep from * until end.,

Round 18: *[K1, p1] x 5, k4, p1; rep from * until end.,

Round 19: *[S1 wyib, p1] x 5, ssk, k2tog, p1; rep from * until end., *(10 sts dec'd, 65 sts rem on needles)*

Round 20: *[K1, p1] x 5, k2, p1; rep from * until end.,

Round 21: *[S1 wyib, p1] x 5, k2, p1; rep from * until end.,

Round 22: *[K2tog] x 6, p1; rep from * until end., *(30 sts dec'd, 35 sts rem on needles)*



At the end of this section, you have 35 sts left on needles.

Round 23: *K2tog; rep from * until 1 st rem before end of the round, k1. *(17 sts dec'd, 18 sts rem on needles)*

Round 24: *K2tog; rep from * until end. *(9 sts dec'd, 9 sts rem on needles)*

FINISHING

Cut the yarn and thread it through the remaining 9 live stitches using a tapestry needle. Pull the yarn to close the gap tightly, secure and weave neatly to the inside of the hat. Weave in all the other remaining yarn ends. Wet block to measurements.

STITCH GUIDE

Central Double Decrease (CDD)

Slip 2 sts together as if to knit, k1, pass the slipped sts over. (*2 sts dec'd*)

Make a bobble (mB)

Row 1 (RS): K1 without slipping the st off the left needle, yo, k1 in the same stitch, turn work. (*2 sts inc'd*)

Row 2 (WS): P3, turn work.

Row 3 (RS): K3, turn work.

Row 4 (WS): P3, turn work.

Row 5 (RS): CDD, do not turn the work. (*2 sts dec'd*)

5/5 Right Cable (RC)

Five over five right cable: slip 5 to cable needle at back, k5, k5 from cable needle.

3/3 Right Cable (RC)

Three over three right cable: slip 3 to cable needle at back, k3, k3 from cable needle.

2/2 Right Cable (RC)

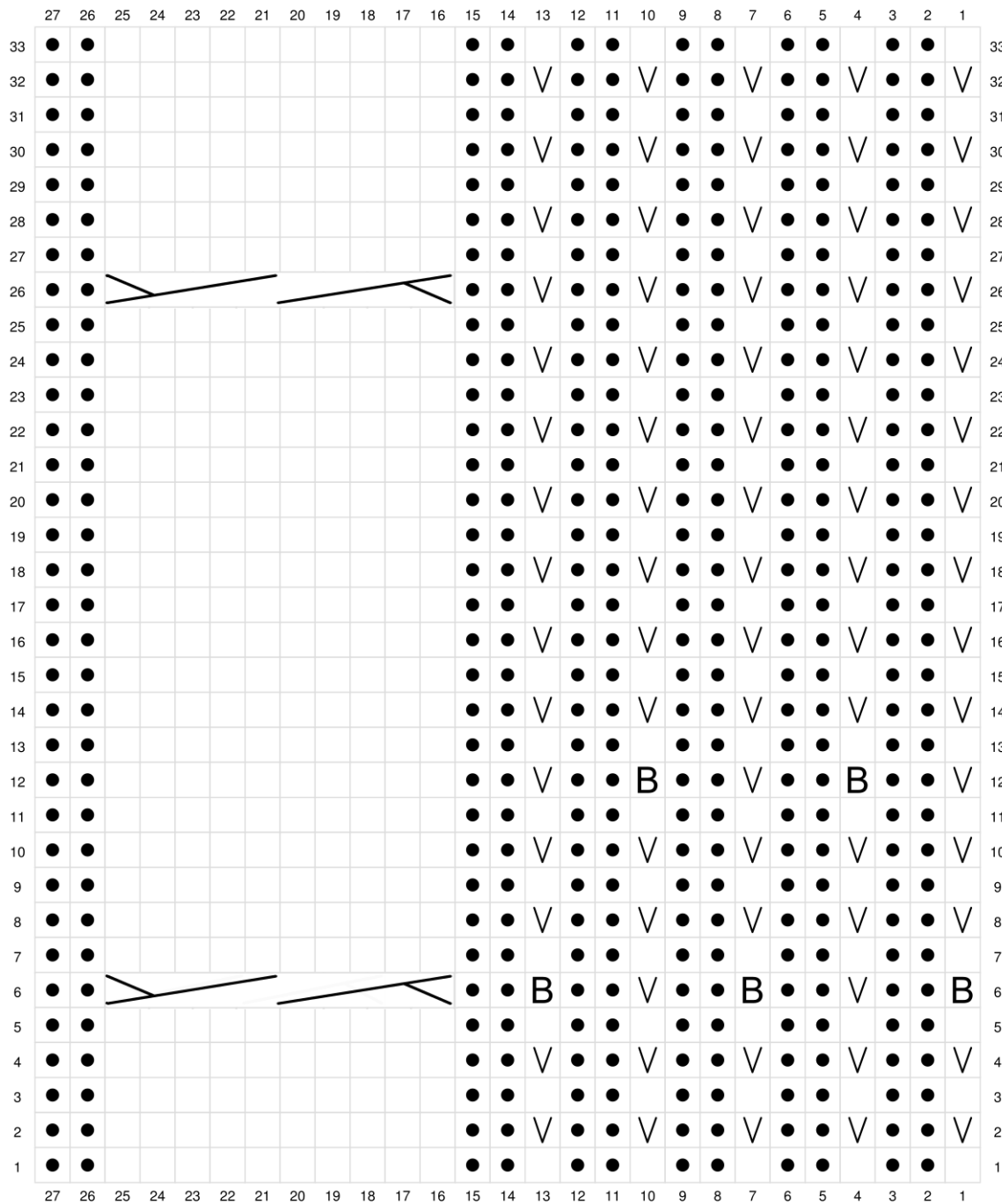
Two over two right cable: slip 2 to cable needle at back, k2, k2 from cable needle.

ABBREVIATIONS

CO	Cast On	RC	Right cable (see the Stitch Guide)
CDD	Central Double Decrease (see the Stitch Guide)	rem(s)	Remain(s)
dec'd	Decreased	rep	Repeat
inc'd	Increased	RS	Right side of the work
k	Knit	Sl1 wyib	Slip 1 st as if to purl with the yarn in back
k2tog	Knit 2 sts together (a decrease)	ssk	Slip as if to knit, slip as if to knit, knit the slipped sts together (a decrease)
mB	Make a bobble (see the Stitch Guide)	WS	Wrong (back) side of the work
meas	Measure(s)	yo	Yarn over
p	Purl		
p2tog	Purl 2 sts together (a decrease)		



MAIN CHART



Knit



Purl



Sl1 wyib

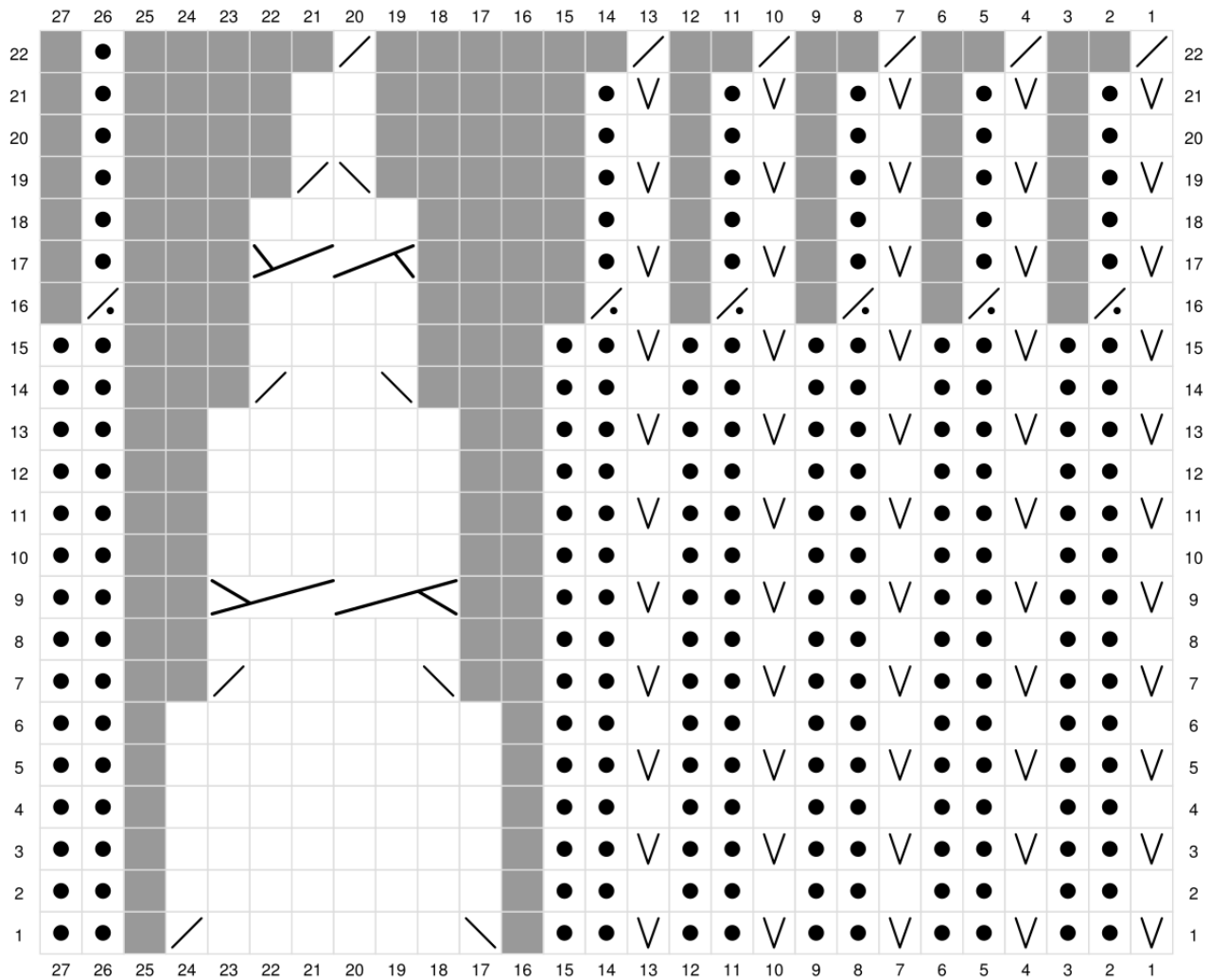


5/5 RC



Make a bobble

CROWN CHART



Knit



Purl



No stitch



Sl1 wyib



Ssk



K2tog



3/3 RC



2/2 RC



P2tog