



Petite Flower Cowl

by Grey Owl Knits/Sarah Kelly © 2024



A simple repeated pattern with a twist. This chart is an easy repeat making it a relaxing knit, using DK weight yarn means it's finished in no time.

A provisional cast on edge is used for grafting at the end to create a seamless cowl.

I have included two charts; the traditional white with black and an inverse chart of black with white.

Ways to make it your own: Use a different colour every 5 rounds; use a variegated or gradient yarn for the contrast colour; switch the contrast and main colour half way each round to give a distinct inside and outside; make it longer, sew up each end and add tassels for a

traditional scarf; use fingering weight yarn, US3 (3.25 mm), and 120 sts instead of the 96 sts in this pattern.



Petite Flower Cowl

by Grey Owl Knits/Sarah Kelly © 2024

METHOD: Knitting

SKILL LEVEL: Intermediate

SKILLS USED: Knitting in the round, stranded knitting, provisional cast on, kitchener stitch in the round

FINISHED MEASUREMENTS:

Approx. 7½ inches (18.75 cm) high; 22 inches (55 cm) circumference

YARN USED in photo:

MC: *Juniper Moon Herriot* DK/Sport Weight 100% Baby Alpaca, 219 yds /100g, #1003 Dark Harbor, 1 skein (dark blue)

CC: *Juniper Moon Herriot* DK/Sport Weight 100% Baby Alpaca, 219 yds /100g, #1058 Tumbleweed, 1 skein (dark grey)

YARDAGE USED (Approx.)

MC: 219 yds/ 200 m

CC: 219 yds/ 200 m

TOOLS:

US5 (3.75 mm) circular needle, 16 inches (40cm), or size needed to obtain gauge

US5 (3.75mm) crochet hook (or close to the needle size used for knitting)

Second set of dpns or circular needles in a similar size (this will be used to pick up PCO edge for the grafting)

Stitch/Place Markers

Tapestry Needle

Waste yarn of similar weight for provisional cast on

GAUGE: Over stranded colourwork, after blocking, 25.5 x 25 rounds = 4 inches/10 cm

To help check gauge knitting in the round check out this tutorial by [Purl Soho](#).

Check gauge using stranded pattern for accuracy, wash and block without stretching.

GLOSSARY:

BN = back needle

BOR = beginning of round

CC = contrast colour

DN = darning needle

FN = front needle

K = knit

MC = main colour

PCO = Provisional Cast On



Petite Flower Cowl

by Grey Owl Knits/Sarah Kelly © 2024

Stitch Guide

Provisional Crochet Cast On: Using waste yarn, make a slip knot on the crochet hook. Hold hook in right hand and knitting needle in left hand, with crochet hook in front of needle. *Bring yarn behind and around needle. Catch the yarn with the hook and pull through the loop on the hook. * The first stitch is now on the needle. Repeat from * to * until desired number of stitches are on the needle. When the desired number of sts is on the needle, make several chains off the knitting needle then cut yarn and fasten off. The extra chains indicate from which end the provisional cast-on will be unzipped.

Unpicking Provisional Cast On: Using spare needle, untie the secured end of the crochet cast on. Gently pull the waste yarn to unravel to the first stitch of the MC of work. Slip stitch onto spare needle by inserting needle into the back of the stitch as if to purl. Gently tug on the crochet waste yarn to reveal the second stitch of the MC. Slip stitch onto spare needle as if to purl. Continue until all stitches have been slipped onto spare needle.

Kitchener Stitch in the round:

Note: The strand of yarn is long. Gently pull it through as each step is completed, and after every couple of sts snug up the stitches so their tension matches the stitches of the cowl.

Setup 1: Begin by having the stitches from each end of cowl on a different circular needle.

Setup 2: Hold both needles parallel with all 4 tips pointing to the right, the stitches on the cast-on end to the back and the final round to the front.

Setup 3: Put a removable stitch marker on the first stitch towards the back of the rear needle, and one on the first stitch at the front of the rear needle.

Setup 4: Thread the long yarn tail through darning needle (DN).

Step 1: Put the DN through the first stitch on front needle (FN) knitwise and take the stitch off the needle.

Step 2: Put the DN through the next stitch on FN purlwise. DO not take stitch off needle.

Step 3: Put the Dn through the first stitch on back needle (BN) purlwise and take the stitch off needle.

Step 4: Put the Dn through the next stitch on BN knitwise. DO not take stitch off needle

Repeat steps 1-4 until 1 stitch remains on each needle. You are now close to the removable markers.

Step 5: Put the DN through the last stitch on FN knitwise and take the stitch off the needle.

Step 6: Put the DN through the front stitch (with marker) purlwise. Remove marker.

Step 7: Put the DN through last stitch on BN purlwise and take the stitch off the needle.

Step 8: Put the DN through the back stitch (with marker) knitwise. Remove marker.

The ends are now closed. Adjust the tension of the graft stitches if necessary.

Weave the end(s) using duplicate stitch or other desired method.



Petite Flower Cowl

by Grey Owl Knits/Sarah Kelly © 2024

Cowl Directions

Using **waste yarn**, cast on 96 stitches using preferred PCO method. The Crochet Method was used for sample.

Join in the round placing marker at the BOR. Be careful not to twist stitches around the needle.

Note: Charts are worked from right to left, from bottom to top. It may be helpful to place a stitch marker after each repeat, using a unique marker for BOR. To avoid overly long floats, trap the strand whenever the float will be more than 5 sts long. Do not catch the float on the same stitch the following round. Keep the floats loose to avoid puckering.

Note 2: Colour Dominance:

*When working with two colours, the way you hold the two strands can influence which yarn is featured more prominently, or which is more **dominant**. I usually carry the contrast yarn behind/underneath the main colour to make the motif stand out (dominant). For more help on colour dominance, check out this [tutorial](#) from Brooklyn*

Tweed.

Join both MC and CC and work chart. Chart will be worked 12 times each round. Work chart 7 times, or to desired length ending after round 22. Cut CC and weave in before working the Kitchener stitch.

Unpick the PCO edge, slip the live stitches onto spare needle. For help picking up live stitches along the cast on edge, check the cast-on tutorial.

Cut MC, leaving a tail approximately 4 times the circumference of the opening. This tail will be used to graft the live stitches from the beginning of the cowl and live stitches from the PCO edge. Be careful not to twist work.

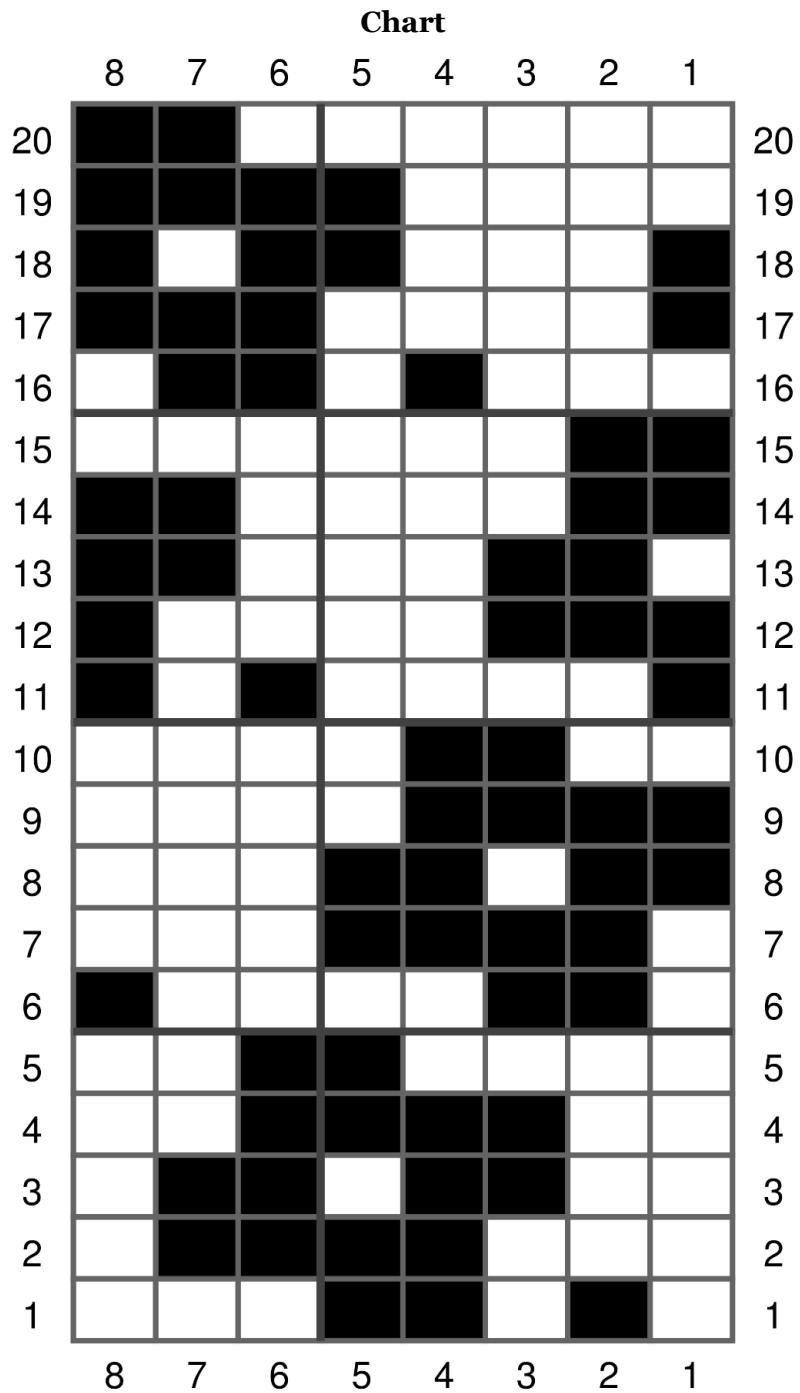
Using the [Kitchener Stitch in the round](#) graft stitches together.

Block and enjoy!



Petite Flower Cowl

by Grey Owl Knits/Sarah Kelly © 2024



Contrast Colour



Main Colour



Petite Flower Cowl

by Grey Owl Knits/Sarah Kelly © 2024

Inverse Colour Chart

	8	7	6	5	4	3	2	1	
20									20
19									19
18									18
17									17
16									16
15									15
14									14
13									13
12									12
11									11
10									10
9									9
8									8
7									7
6									6
5									5
4									4
3									3
2									2
1									1



Contrast Colour



Main Colour



Petite Flower Cowl

by Grey Owl Knits/Sarah Kelly © 2024

Tutorial Links Listed in Pattern:

Swatching in the round <https://www.purlsoho.com/create/swatching-for-circular-gauge/>

Colour Dominance: https://www.youtube.com/watch?v=Xy_NKDRSuwQ

Kitchener Stitch <https://www.youtube.com/watch?v=ZhFbOAoE4Eo>

Provisional Cast On <https://www.youtube.com/watch?v=GoNjkGQofBQ>

Petite Flower Cowl All distribution rights belong to **Grey Owl Knits (Sarah L Kelly)**. Copies may be made for personal use only. Sharing copies of patterns is strictly prohibited under copyright law. It is legal to link to the Ravelry page or Etsy page for others to access this pattern. If pattern support is needed, please message me through Ravelry or Etsy. I'd love to see your finished project, please tag me using @grey_owl_knits on Instagram or @greyowlknits on Facebook.

Tech Editor: Sigrun Jones

Other patterns by Grey Owl Knits you may enjoy!

Songbird Cowl



Mine! Cowl



Bunny Thicket Cowl

