

PEANUTS HAT



pattern is for private use only.
copyright belongs to Tetiana Lutsak at Nutsknitwear Design.

 nutsknitwear@gmail.com

   nutsknitwear

 tekinka

Peanuts because super easy!

Nice double layered brim makes it perfect for winter and late autumn. Pattern includes 2 brim options (free folding and double fixed). Before casting on, please read the pattern through. The hat is knitted seamless in a round.

Yarn: 3 shades of Drops Nepal (65% wool, 35% alpaca, ca. 75 m in 50 g) or any similar non superwash yarn to match the gauge.

Color 1: ca. 80 g (orange 2920); Color 2: ca. 20 g (off white 0100); Color 3: ca. 5 g (grey 0501); ca. 18 g for a big pompom.

Needles and notions: 4 mm and 4.5 mm (6-7 US) 50 cm circular needles; 4 mm (6 US) double pointed needles to work the crown (optional); crochet hook or tapestry needle to weave in the ends, 1 stitch marker.

Gauge: 20 sts and 16 rows in 10 cm/4 in with 4.5 mm needle in stockinette stitch with fair isle motif. Please knit a swatch in a round to estimate the gauge correctly.

Sizes: The pattern was designed for 2 sizes: Kids (to fit 48-54 cm/19-21 in head circumference) and Adult (to fit 56-60 cm/22-24 in). The brim length, when folded, 6.5 cm / 2.9 in, the hat length 21 cm / 8 in from turned up brim edge to the crown, recommended pompom size 6.5 cm / 2.9 in in diameter.

The size can still be adjusted by going up or down a needle size. Or by reducing or adding a number of stitches (keep it always divisible by 6).

Cast on (A) If you choose to make free folding brim, cast on 85 (97) sts with Color 1 and any method of your choice. I usually use a long tail cast on.

(B) For a fixed double layered brim, use a separate strand of yarn and a crochet chain provisional or a crochet cast-on to cast 84 (96) stitches. You can find a video on how to do it at @nutsknitwear Instagram page.

Brim (A) R1: slip 1, *p1, k1*, repeat from * to * until there is only 1 st left. Then join your work in a round by pulling the last st through the first st, making sure not to twist the work. Place a stitch marker to mark the beginning of the row.

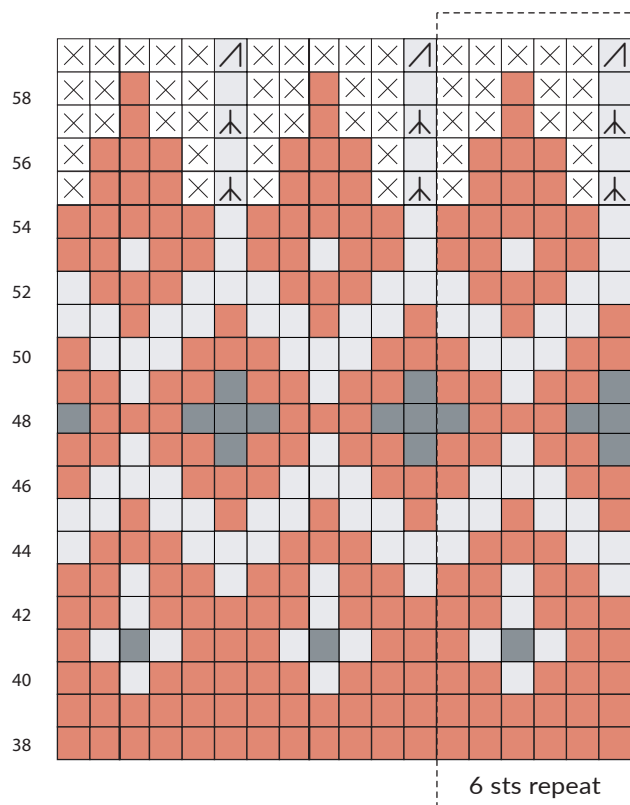
(B) R1: slip 1, *p1, k1*, repeat from * to * till the end of the row. Then, join your work in a round, making sure not to twist the work. Place a stitch marker to mark the beginning of the row.


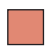



(A&B) R2-R36: *p1, k1*, repeat from * to * till the end of the row. In the end of R36 you will have ca. 6.5 cm/2.9 in tall folding brim.

(B) Return to your provisional cast on, remove the crochet chain of provisional cast on and transfer all the sts onto your spare pair of needles. Then, fold your work twice and start joining the corresponding stitches of the two edges by k2tog.

(A) R37: switch to 4.5 mm (7 US) needles and kll.

(A&B) From R38, follow the chart (read the chart from right to left, from the bottom up) and knit fair isle pattern as indicated on the chart.



-  CDD central double decrease
-  knit color 1
-  knit color 2
-  no stitch
-  knit 2 together

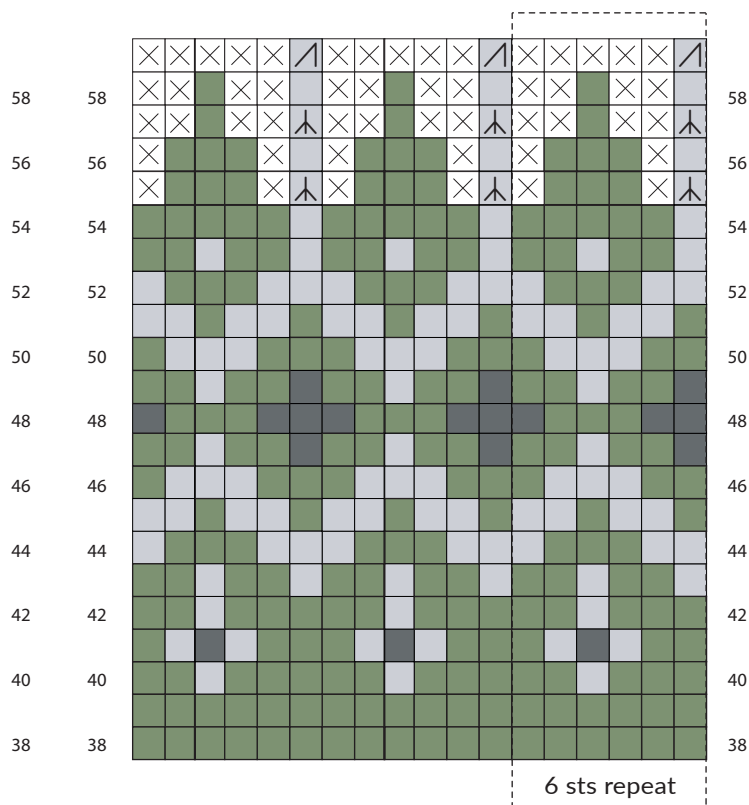
If it's your first time knitting fair isle, make sure not to knit to tight. Note, you might need to catch the floats in R51 and R52, but most of the floats are longer than 5 sts.

In the **R55** begin decreasing as indicated on the chart. You might also switch to double pointed needles to work the crown.

After **R59**, you will have a total of 14 (16) sts left on your needles.

R60: k2tog till the end of the row, you will have 7 (8) sts left. Then, break the yarn and thread it through the remaining sts with a crochet hook or a tapestry needle. Pull the yarn tight to close the hole and fasten off inside. Weave in the ends.

Finishing: try the hat on before washing and notice how much stretching you would need for the perfect fit, if you need any. Wash the garment in a warm soapy water and lay flat to dry, smoothing out the stitches.



Pay attention to the crown and any uneven stitches. You can also use water spraying or steaming instead of washing, which in most cases works just fine for me.

Pompon: use a pompon maker to make a pompon of any desired size. If you don't have one, take two pieces of cardboard, cut out 6 cm diameter circles with 2.5 cm diameter holes in the centers, hold the circles together and wrap the yarn round the circles to make a pompon. You will need about 16 g of yarn.

When your pompon weight (minus cardboard) reaches 16-18 g, cut with the scissors the yarn between the two circles, and before removing them, place a double thread of yarn in the middle and tie firmly your pompon. Finally, remove the cardboard circles, using a crochet hook fix it to the top of the hat and you are ready to go!

Feedback and help

If you have questions, need help or found a mistake, please feel free to contact me. Also, please, share! Tag @nutsknitwear and #thepeanutshat on Instagram and add to your projects on Ravelry. I'm looking forward to hearing from you and seeing your beautiful creations.

Warm greetings from Holland and thank you for supporting my work,
Teti