

# OWL AROUND

## By Kulabra Designs



### Materials:

1. 75 g of fingering (or light fingering) weight yarn total.
2. Circular needles size US 0-2, depending on your gauge / size needed.
3. Some scrap yarn or stitch holders for the thumb stitches.
4. Tapestry needle and some yarn for embroidery

**Gauge and size:** 36 x 40 = 4";

**Mittens** CO 64 sts. on circular needles, join in the round, and knit 2x2 rib for 2.5-3cm. After the ribbing:

**-For longer version:** proceed with stranded pattern, adding stitches on the sides of the mitten where shown on the chart, for 72sts.

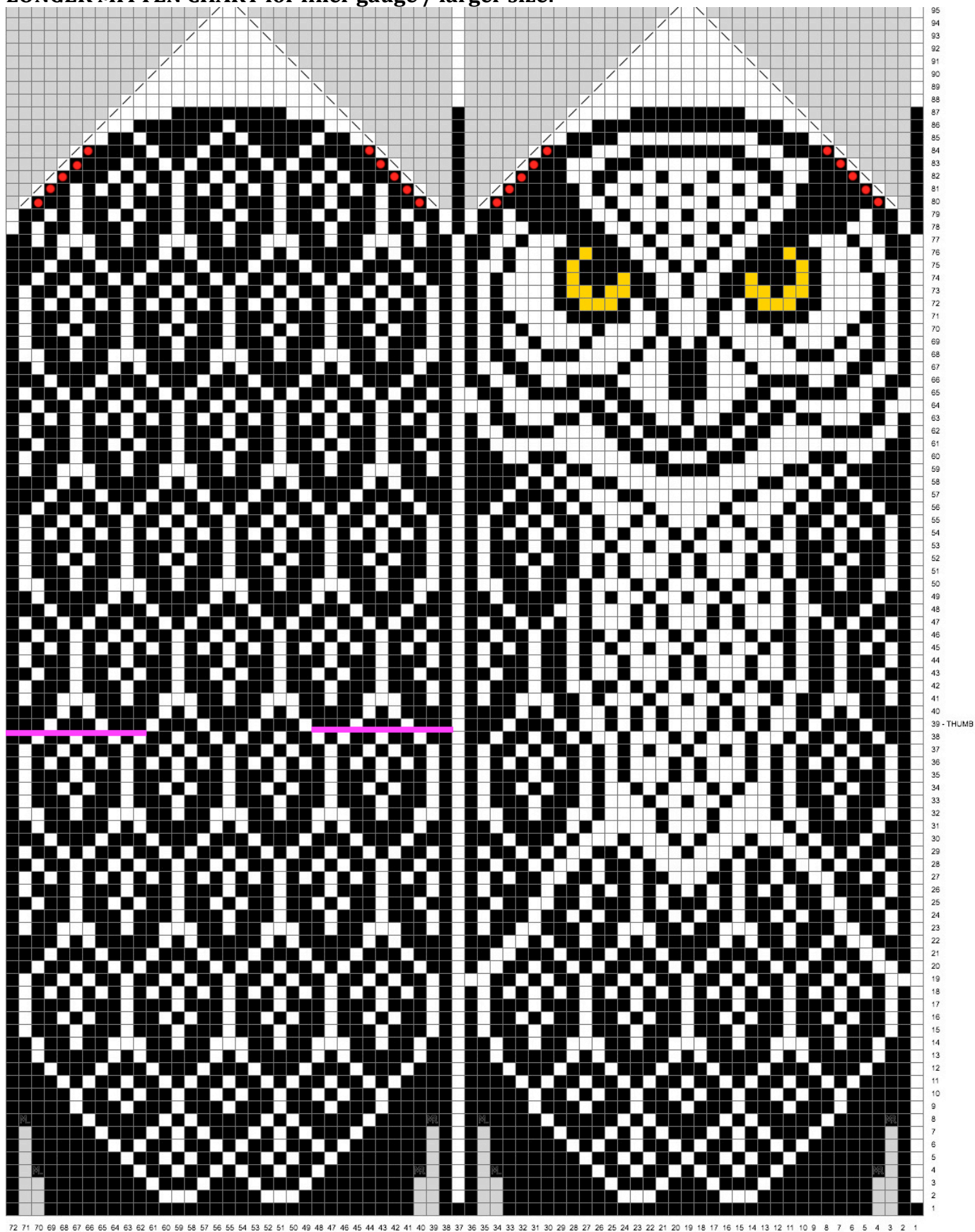
**-For shorter version:** and knit as charted, adding 8sts. evenly in the first round.

**Thumb hole:** In 39<sup>th</sup> round (or 40<sup>th</sup> – for shorter mitten), put the 11 sts. just under the pink line on the charts on a stitch holder or waste yarn, and CO the same number of sts. over the hole in the same row. Join in the round and continue knitting mitten body as charted on 72 sts.

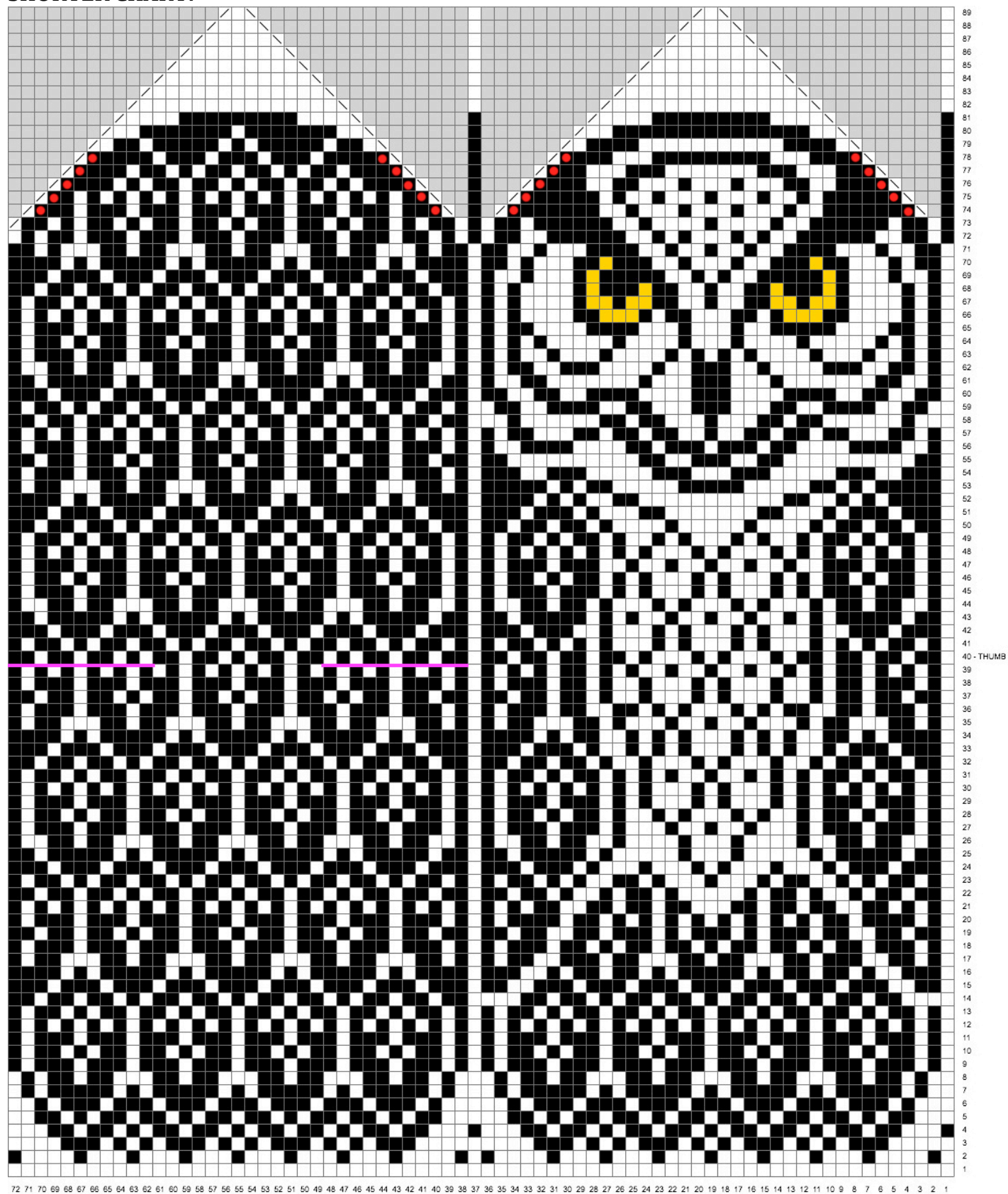
**Thumbs (both versions):** The thumb opening is highlighted with pink line on the mitten chart. The pink line on the thumb chart shows the stitches from the stitch holder (the thumb front), the remaining stitches are picked up from the palm. The thumbs are worked on 28 stitches (2X11 sts. from mitten body + 2X3sts. picked on the sides, marked with pink squares).

**Thumb and mitten tips:** When you have 5-6 stitches left on each needle, break the yarn, and pull the yarn tail through remaining stitches and inside the mitten, and make a knot.

**Finishing:** Embroider the eyes with duplicate stitch. Knit the ears: pick up 5sts. on the back + 5sts. on front side of the owl (those stitches are marked with red dots), join in the round and knit 1cm tube. Then start knitting 2tog. at the end of each 5sts. group in every round, until there are 2sts. left on each needle. Break the yarn and pull it through remaining stitches and inside. You can pull the yarn tail between picked-up sts. at the ear base and mitten body so that the other color does not show. Weave in ends, block and wear!

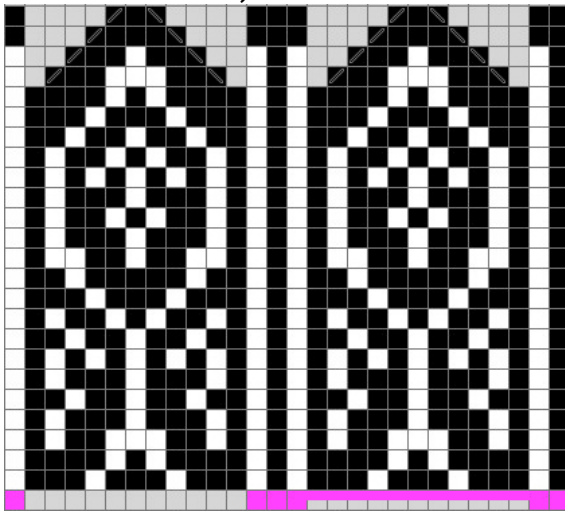
**LONGER MITTEN CHART for finer gauge / larger size:**

## SHORTER CHART:

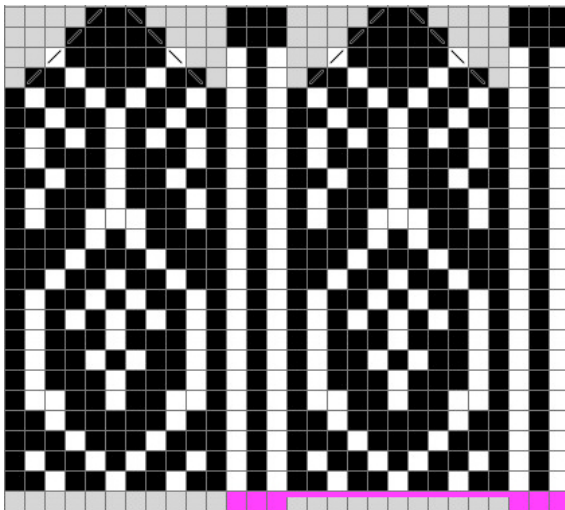




**THUMBS for longer mittens,  
28 sts. wide, make two:**



**THUMBS for shorter mittens:**



**Chart symbols:**



Knit



Left leaning decrease (S1K1psso or SSK)



k2tog



Make 1 right



Make 1 left

### **COPYRIGHTS AND ALL OTHER RIGHTS:**

The pattern is intended for your personal use only. You cannot copy, duplicate, display or distribute either the hard copy or an electronic pattern, in whole, or in part. However, you can sell handmade items made using this pattern as long as those are handmade by you personally.

No mass production is allowed.

**SLEEPING BEAUTIES.** Actually, one of the beauties is just half-eye awake (or asleep).

You can knit one owl awake, and other – like this:

