



OOEY GOOEY COWL

drea renee knits

OOEY GOOEY COWL

DETAILS

I love this style of cowl for colorwork, as it is perfect for when you don't want to have to weave in lots of ends, and you always have the right side facing you! Plus, it happens to be one of my favorite accessories to wear thanks to its easy styling - just pop it on! I was craving the coziest cowl ever, so I reached for some Suri Alpaca, which I held double, and then paired it with a color-shifting yarn to make it extra dynamic.



SIZES

One Size



FINISHED MEASUREMENTS

Height - 8"/20.5 cm
Circumference - 29"/73.5 cm



YARN

MC - Sport weight Wool 75 g/300 yds/275 m
CC - Lace weight Suri Alpaca (held double) 75 g/492 yds/450 m



SUGGESTED YARN

MC - Spincycle Yarns Dyed in the Wool 100% American Superwash Wool (50 g/200 yds/183 m) - 2 skeins Mississippi Marsala (oranges, reds and blues)

CC - The Farmer's Daughter Fibers Oh Dang! Lace (held double to create a sport weight) 74% Suri Alpaca/26% Silk (50 g/328 yds/300 m) - 2 skeins Juniper (mint blue)



SUGGESTED NEEDLES

Size US 4/3.5 mm -16"/40 cm circular needle, recommended - A second needle of the same size will be needed to finish the cowl. *(Use the needle size you need to achieve gauge.)*
Crochet hook for Provisional Cast On (Size E is recommended)



NOTIONS

Smooth waste yarn, stitch marker (1), tapestry needle



GAUGE

26 sts & 26.5 rnds = 4"/10 cm
Measured over stitch pattern knit in the round, after blocking.



OOEY GOOEY COWL

NOTES

○ This cowl is knit in a tube in the round, twisted once, and then grafted together using the Kitchener stitch.

○ This is one of those rare occasions where I would recommend prioritizing Row gauge over Stitch gauge if you are finding it tricky to get both exactly. The cowl is knit to a certain number of rows for the colorwork to match up, so it is important to make sure your Row gauge is correct. A small discrepancy in stitch gauge may mean the cowl height is a bit shorter or taller than intended, but it should still be very cozy.

○ Want the circumference of your cowl to be larger? You can stretch the tube to be longer during blocking. I blocked my cowl to 29"/73.5 cm, but I could have easily lengthened it to 31"/79 cm. Just note that this will take away a small bit of the height of the cowl.

○ A Provisional Cast On allows us to save our live stitches until we are ready to return to them at a later time. The only hiccup to this approach is that when you remove your waste yarn, you are left with a pesky half stitch, as you are technically now working in the other direction. To avoid this, we simply cast on one extra stitch with our waste yarn, knit one round in our working yarn, and then decrease out that extra stitch with a k2tog on the very next round. When we remove our waste yarn at the end of our knitting to graft our cowl closed - we will have exactly the amount of stitches that we need!

○ Provisional Cast On:
<https://youtu.be/tP-kOGGF4rY>

○ Colorwork charts are read from right to left, beginning in the lower right-hand corner.

○ To block your cowl, soak it in lukewarm water (with some wool wash or essential oils, if desired) for about 15 minutes. Once fully saturated, gently squeeze out the water and then roll it up in a clean towel and press on the towel to remove even more of the moisture. Spread out your cowl on a large surface to dry. You may find it helpful to pin down the ends of the tubes so they lay flat.

○ Kitchener Stitch:
<https://youtu.be/HD9bvuf3ZLo>



OOEY GOOEY COWL

GLOSSARY

BOR - Beginning of round

CC - Contrast color

CO - Cast on

DEC/'D - Decrease/d

K - Knit

K2TOG - Knit 2 sts together [1 st dec'd]

MC - Main color

REM - Remain

REP - Repeat

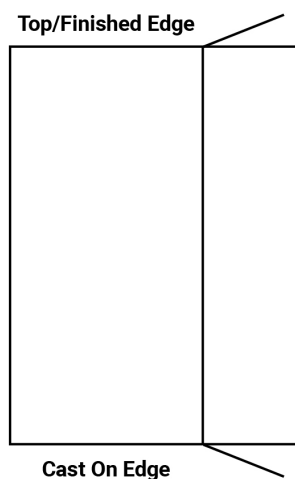
RND/S - Round/s

RS - Right Side

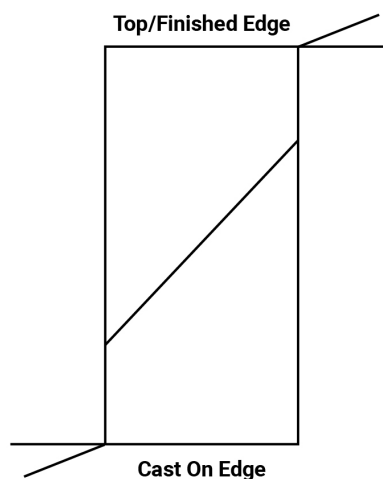
ST/S - Stitch/es

GRAFTING

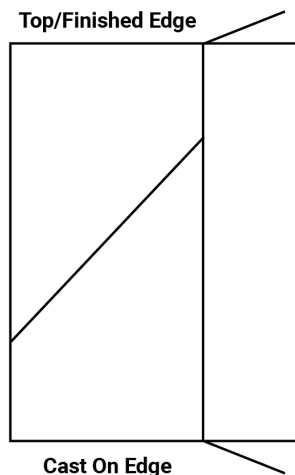
Step 1: Put your provisionally cast on stitches back onto a needle (shown at the bottom of this graphic). Your needle tips will both be pointing in the same direction.



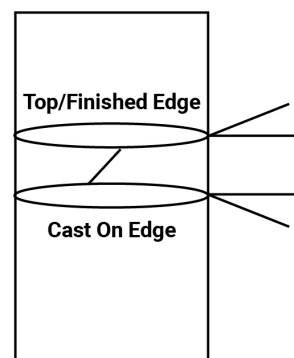
Step 2: Twist the bottom half of the stitches 180 degrees so the needles are pointing in opposite directions. The diagonal line in the middle of the graphic is representing the twist.



Step 3: Slip 56 sts on the bottom needle (at the provisional cast on) purlwise so that the needles are now pointing in the same direction.



Step 4: Fold the cowl so that the needle tips come together, still facing the same direction (so the twist remains) and graft the two sets of sts closed.



Grafting Image: ©2020 Meaghan Schmalz



OOEY GOOEY COWL

— DIRECTIONS —

SETUP

Using waste yarn and the Provisional Cast On method, CO 105 sts.

Setup Row (RS): Join MC, knit.

During the Provisional Cast On, we have intentionally cast on 1 extra stitch (you can find an explanation for this in the Notes on pg. 3). During the first round of the cowl, we will simply decrease this one extra stitch out with a k2tog and then return to following the chart without further interruption!

Place a BOR marker and join to work in the round, taking care not to twist the sts.

Dec Rnd: Using MC, k2tog. Now, beginning with the second stitch of the cowl and the chart, work Row 1 of the Chart on pg. 6, joining/using CC and MC as indicated, to the end of the rnd. [1 st dec; 104 sts rem]

Continue to work Rows 2-64 of the Chart, repeating the 8-st repeat 13 times across the rnd.

Rep [Rows 1-64] of the Chart once more.

Rep [Rows 1-62] of the Chart. Break both strands of CC.

FINISHING

Place all live sts on waste yarn. Leave a length of MC that measures approximately 60"/152.5 cm for grafting.

Wet block cowl and lay flat to dry using pins if necessary to achieve the correct dimensions (8"/20.5 cm x 29"/73.5 cm).

Once completely dry, move live stitches back onto needle from waste yarn, then remove provisional cast on and arrange stitches on to the additional needle. Using the graphic on pg. 4, twist the cowl once, and graft the cowl together using the Kitchener stitch. (Tutorial video link in the Notes section on pg. 3.) Weave in any loose ends so they are hidden inside the "tube" of the cowl. It's now ready to wear!

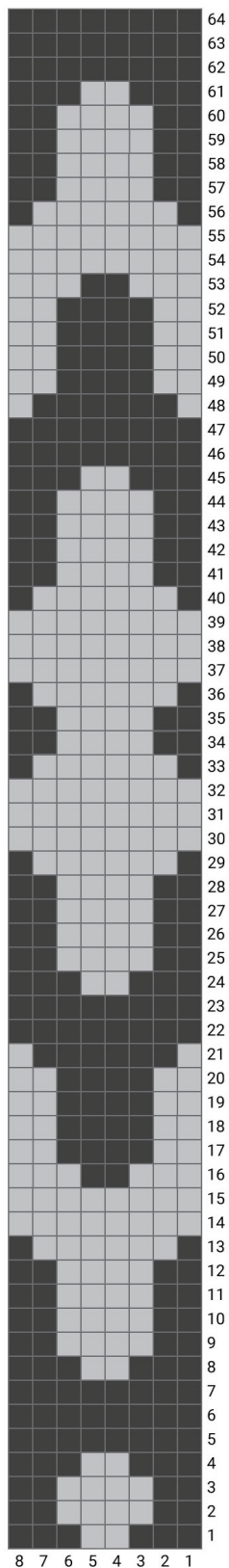
©2025, Andrea Mowry. All rights reserved. In purchasing this pattern you agree to print and use this pattern and the items made from it only for your personal non-commercial use. You may not distribute or sell electronic or paper copies of this pattern or parts of this pattern. Designer can be contacted at drkpatternhelp@gmail.com.

Pattern Version 2.0 / September 2025

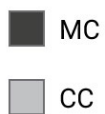


OOEY GOOEY COWL

CHART



KEY



CONNECT



**VIDEO
TUTORIALS**



NEWSLETTER



RAVELRY



INSTAGRAM

If you share photos of your DRK projects make sure to tag me @dreareneeknits and use hashtags #dreareneeknits and #DRKooeygoeeycowl!

CONTACT & SUPPORT

For questions, pattern support, and other information, please email drkpatternhelp@gmail.com.

NEWSLETTER

Be the first to know about new pattern releases, exclusive introductory discounts, new video tutorials and special events at www.dreareneeknits.com! Subscribe at <http://eepurl.com/diPxsr>

YOU MIGHT ALSO LIKE:



Montana Mountain
drea renee knits



Across the Pond
drea renee knits



Moonwake Cowl
drea renee knits

