



Northern Lights

Cabled hat by Irina Dmitrieva

Sizes: To fit head sizes 53-58cm / 21-23"

Finished Measurements: 42 cm/17" brim circumference and 50 cm/20" circumference body of hat, 22 cm/ 8 ½" height from base of ribbing to top center of crown. Measurements taken from relaxed fabric after blocking.

Yarn: Lace weight wool yarn in two different colors, approx. 800 yards in total. **Color A:** 450-500 yards and **Color B:** 350-300 yards.

Shown in: Alize Lanagold 800 (51% Acrylic, 49% Wool; 800 m /875 yards per 100g ball).

Gauge: 16 stitches and 24 rounds = 4" in Stockinette Stitch using 4 strands and worked in the round with larger needle, before blocking.

Needles: 3.5 mm/US 4 and 5.5 mm/US 9 circular needle, 40 cm/16" long; 1 set 5.5 mm/US 9 double-pointed needles or 80 cm/32" circular needle for magic loop.

Notions: 1 stitch marker, tapestry needle.

DIRECTIONS

Using 4 strands of color A with circular needle for Tubular Cast On (sugg. 3.5 mm/US 4), cast on 112 stitches using the [Long Tail Tubular Cast On Method](#).

Note: If you do not wish to work a Tubular Cast On, with 3,5 mm/US 4 circular needle, cast on 112 stitches using your preferred method, place marker and join work into the round and start to work **Ribbed Brim**.

Row 1: *Knit 1, slip1 with yarn in front, repeat from * to end of row.

Join to work in the round, being careful to not twist the stitches.

Round 2:*slip 1 with yarn in back, purl 1, repeat from * to end of round.

Round 3: *knit 1, slip 1 with yarn in front, repeat from * to end of round.

Round 4:* slip 1 with yarn in back, purl 1, repeat from * to end of round.

Round 5 (Rearrange stitches for 2x2 ribbing): * knit1, slip 1 stitch to cable needle and hold in back, knit 1 from left needle, purl 1 from cable needle, purl 1, repeat from * to end of round.

RIBBED BRIM

Ribbing Round: * knit 2, purl2; repeat from * to the end of round.

Repeat the Ribbing Round 13 more times. (14 times total). If you do not use a Tubular Cast On repeat the Ribbing Round 2 more times.

Increase Round 1(Chart 1): * knit2, pfb twice, knit2, purl2; repeat from * to the end of round.
(28 stitches increased; 140 stitches now on needle)

CABLED BODY

Change to larger needles (sugg. 5.5 mm/US 9), begin with Round 1, work Cable pattern from Chart 2 or instructions below:

Round 1: * C6F, knit6, C6B, purl2; repeat from * to the end of round.

Round 2 and all even: knit the knits and purl the purls as you see them.

Round 3: * knit3, C6F, C6B, knit3, purl2; repeat from * to the end of round.

Round 5: * knit6, C6B, knit6, purl2; repeat from * to the end of round.

Round 7: * knit3, C6F, C6B, knit3, purl2; repeat from * to the end of round.

Work Rounds 1-8 of Cable Chart 2 more times (3 times total) then Rounds 1-6 again.

After 14th round of the cabled body cut 1 strand of color A and join 1 strand of color B. Then cut 1 strand of color A and join 1 more strand of color B through every 6 rounds.

CROWN SHAPING

Continue with Round 1, work pattern from Chart 3 or instructions below. When hat gets too small to work comfortably on 16-inch circular, switch to DPNs or long circulars as you prefer.

Round 1: * knit3, C6F, C6B, knit3, purl2; repeat from * to the end of round.

Round 2: * knit2, ssk, knit10, k2tog, knit2, purl2; repeat from * to the end of round.

Round 3: * T5FD, knit6, T5BD, purl2; repeat from * to the end of round.

Round 4: * k2tog, knit10, ssk, purl2; repeat from * to the end of round.

Round 5: * C6F, C6B, purl2; repeat from * to the end of round.





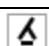
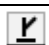
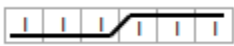
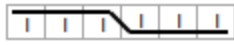

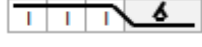
Round 6: knit the knits and purl the purls as you see them.

*Round 7: * knit3, C6B, knit3, purl2; repeat from * to the end of round.*
*Round 8: * knit2, ssk, knit4, k2tog, knit2, purl2; repeat from * to the end of round.*
*Round 9: * T5FD, T5BD, purl2; repeat from * to the end of round.*
*Round 10: * k2tog, knit4, ssk, purl2; repeat from * to the end of round.*
Round 11: knit the knits and purl the purls as you see them.
*Round 12: * knit1, ssk, k2tog, knit1, purl2; repeat from * to the end of round.*
Round 13: knit the knits and purl the purls as you see them.
*Round 12: * ssk, k2tog, purl2; repeat from * to the end of round.*
Round 15: knit the knits and purl the purls as you see them.
*Round 16: * k2tog, p2tog; repeat from * to the end of round.*

Use tapestry needle to pull end through remaining stitches.

Weave in ends.

LEGEND

	knit	Knit stitch
	purl	Purl stitch
	k2tog	Knit two stitches together
	ssk	Slip, Slip, Knit: Slip next stitch from left needle to right needle knitways. Slip next stitch the same way. Return both stitches to left needle in their new twisted positions and k2tog
	p2tog	Purl2 together
	pfb	purl into front and back of a stitch
	C6B	Slip 3 stitches to cable needle and hold in back. Knit 3 from left needle, knit 3 from cable needle.
	C6F	Slip 3 stitches to cable needle and hold in front. Knit 3 from left needle, knit 3 from cable needle.
	T5BD	Slip 2 stitches to cable needle and hold in back. Knit 3 from left needle, purl2 together from cable needle.
	T5FD	Slip 3 stitches to cable needle and hold in front. Purl2 together from left needle, knit 3 from cable needle.

CHARTS

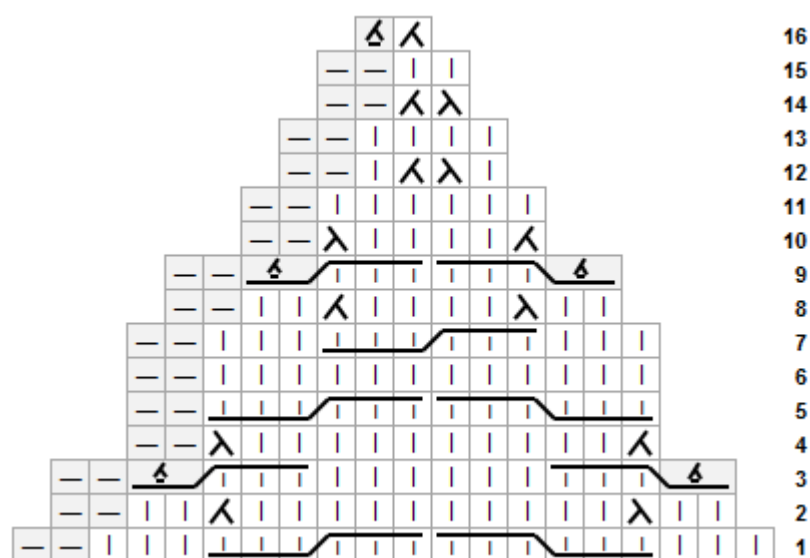


Chart 3

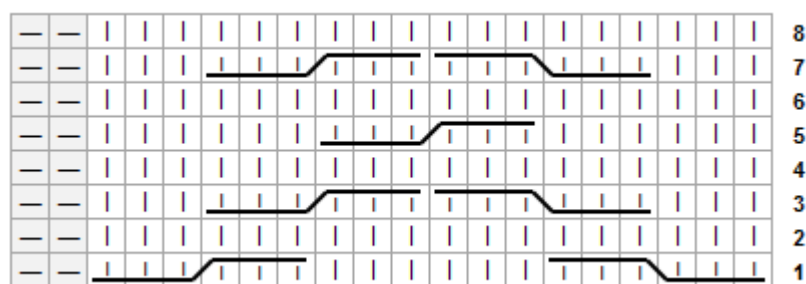


Chart 2



Chart 1