

# Nivia

By Babette Ulmer – A unisex hat with cable ribs.



## Material

### Yarn:

1 colour DK Yarn with an approximate length of 225 m (246 yds)/100 g.

### Yardage:

**Locoporella Merino DK** (100 % wool, approximate length 225 m (246 yds)/100 g:

Colour Salbei 71 (85) g = 160 (191) m (175 (210) yds)

### Size:

Approx. 54 – 56 (58 – 60) cm head circumference.

### Needles:

A set of 4 mm (US 6) double pointed needles.

### Others:

Tapestry needle for weaving in the yarn ends.

### Gauge:

25,5 sts and 30 Rd to 10 cm (4") measured over cable rib pattern using 4 mm (US 6) needles.

Measure the swatch after washing and drying.

## Abbreviations

**Cable decrease 3/2** = slip 3 sts onto a cable needle and leave at back of work, then knit together the 1st st of the left needle with the 1st st of the cable needle and then knit together the 2nd st of the left needle with the 2nd st of the cable needle, k1

**Cable decrease 2/3** = slip 2 sts onto a cable needle and leave at front of work, k1, then knit together tbl the 1st st of the left needle with the 1st st of the cable needle and then knit together tbl the 2nd st of the left needle with the 2nd st of the cable needle

**C5b 3/2** = slip 3 sts onto a cable needle and leave at back of work, k2, then k3 from cable needle

**C5f 2/3** = slip 2 sts onto a cable needle and leave at front of work, k3, then k2 from cable needle

**k** = knit

**k2tog** = knit two stitches together

**m(s)** = stitch marker(s)

**p** = purl

**pm** = place stitch marker

**p2tog** = purl two stitches together

**p2tog tbl** = purl two stitches together through back of loop

**Rd(s)** = round(s)

**ssk** = (slip, slip, knit) slip first stitch purlwise, slip second stitch knitwise, knit 2 together through back loop

**st(s)** = stitch(es)

**tbl** = through back of loop

**Pattern note:** If an m is not mentioned in the pattern, then lift it off and continue knitting

## And here we go!

### Brief pattern

(For fast readers and knitters 😊)

Cast on 108 (120) sts using 4 mm needles.

Distribute sts equally onto the 4 needles of the set of double pointed needles – 27 (30) sts **per** needle. Mark beginning of the Rd = **pm**.

### Rib band

**Rd 1:** \* P1, k2, p1, repeat from \* throughout.

**Rd 2 - 30:** Repeat Rd 1 another 29 times.

### Cable pattern

Follow the **chart**.

Pull the thread through the remaining 18 (20) sts and pull them together tightly.

Sew in all threads.

### Detailed pattern

(Each round is described)

Cast on 108 (120) sts using 4 mm needles.

Distribute sts equally onto the 4 needles of the set of double pointed needles – 27 (30) sts **per** needle. Mark beginning of the Rd = **pm**.

### Rib band

**Rd 1:** \* P1, k2, p1, repeat from \* throughout.

**Rd 2 - 30:** Repeat Rd 1 another 29 times.

### Cable pattern

Follow the chart or work according to the written pattern as follows:

**Rd 1:** \* P1, C5f 2/3, C5b 3/2, p1, repeat from \* throughout.

**Rd 2:** \* P1, k10, p1, repeat from \* throughout.

**Rd 3 - 12:** \* P1, k2, p1, repeat from \* throughout, knitting in Rd 12 only to the last 2 sts.

**Rd 13:** \* C5b 3/2, p2, C5f 2/3, repeat from \* throughout, work the first braid with the last 2 sts of Rd 12 and the first 3 sts of Rd 13.

**Rd 14:** \* K5, p2, k5, repeat from \* throughout, at the Rd-end knit another k2 (so that the beginning of the Rd is moved back)

**Rd 15 - 24:** \* P1, k2, p1, repeat from \* throughout, knitting in Rd 24 only to the last 3 sts.

**Rd 25:** \* C5f 2/3, C5b 3/2, p2, repeat from \* throughout, work the first braid with the last 3 sts of Rd 24 and the first 2 sts of Rd 25.

**Rd 26:** \* K10, p2, repeat from \* throughout, at the Rd-end knit another k3 (so that the beginning of the Rd is moved back)

**Rd 27 - 36:** \* P1, k2, p1, repeat from \* throughout.

**Rd 37 and 38:** Repeat Rd 1 and 2 once.

**Rd 39 - 48:** Repeat Rd 27 - 36 once, knitting in Rd 48 only to the last 2 sts.

### Decreases

**Rd 49:** \* Cable decrease 3/2, p2, cable decrease 2/3, repeat from \* throughout, work the first cable decrease work the last 2 sts of Rd 48 and the first 3 sts of Rd 49  
(-36 (40) = 72 (80) sts).

**Pattern note:** The first 2 sts of the first cable decrease are now the last 2 sts at the Rd-end and the last st of the first cable decrease is now the 1st st at the beginning of the Rd.

**Rd 50:** \* K1, p2, k5, repeat from \* throughout, only knit to the last st.

**Rd 51:** \* ssk, p2tog, p2tog tbl, k2tog, repeat from \* throughout, work the first decrease with the last st of Rd 50 and the first st of Rd 51  
(-36 (40) = 36 (40) sts).

**Rd 52:** \* K1, p2, k1, repeat from \* throughout, knitting only to the last st.

**Rd 53:** \* K2tog, p2tog, repeat from \* throughout, work the first decrease with the last st of Rd 52 and the first st of Rd 53  
(-18 (20) = 18 (20) sts).

**Rd 54:** \* k1, p1, repeat from \* throughout.

Pull the thread through the remaining 18 (20) sts and pull them together tightly.  
Sew in all threads.

**Optional:** Make a pompom from the rest and attach it to the tip of the cap.

## Chart

Only odd Rd are shown in the chart; knit in the sts of even Rds as they appear. Repeat the 12 sts pattern repeat between the arrows throughout. Work Rd 1 – 53 once.

### Pattern note:

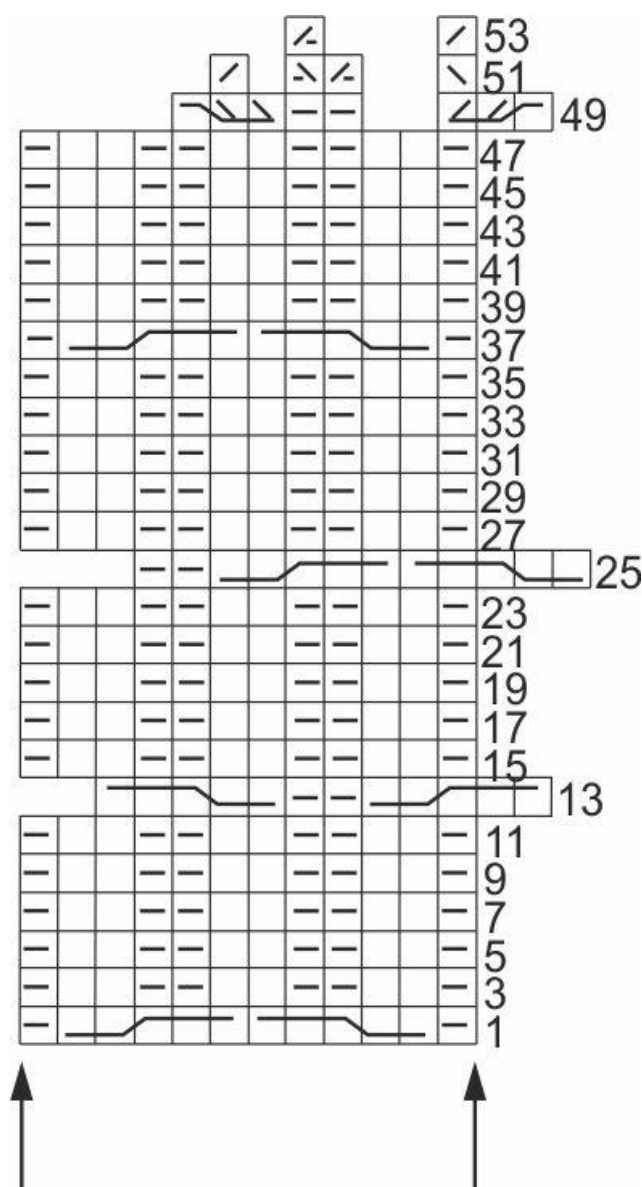
In **Rd 13** work the first cable with the last 2 sts of Rd 12 and the first 3 sts of Rd 13.

In **Rd 25** work the first cable with the last 3 sts of Rd 24 and the first 2 sts of Rd 25.

In **Rd 49** work the first cable decrease with the last 2 sts of Rd 48 and the first 3 sts of Rd 49.

In **Rd 51** work the first decrease with the last st of Rd 50 and the first st of Rd 51.

In **Rd 53** work the first decrease with the last st of the Rd 52 and the first st of the Rd 53.



### Keys

- k=1
- = p1
- = k2tog
- = p2tog
- = ssk = slip first stitch purlwise, slip second stitch knitwise, k2tog through back loop
- = p2tog tbl
- = slip 2 sts onto a cable needle and leave at front of work, k3, then k2 from cable needle
- = slip 3 sts onto a cable needle and leave at back of work, k2, then k3 from cable needle
- = slip 2 sts onto a cable needle and leave at front of work, k1, then knit together through back of loop the 1st st of the left needle with the 1st st of the cable needle and then knit together through back of loop the 2nd st of the left needle with the 2nd st of the cable needle
- = slip 3 sts onto a cable needle and leave at back of work, then knit together the 1st st of the left needle with the 1st st of the cable needle and then knit together the 2nd st of the left needle with the 2nd st of the cable needle, k1