

Navid

By Babette Ulmer – A unisex hat with cables



Material

Yarn:

1 colour DK weight yarn with an approximate length of 225 m (246 yds)/100 g.

Yardage:

Locoporella Merino DK (100 % wool, approximate length 225 m (246 yds)/100 g:

Burgunder 94 g = 211 m (231 yds)

Size:

Ca. 52 – 57 cm (20,5 – 22,5“) head circumference

Needles:

A set of double pointed 4 mm (US 6) needles.

Others:

Cable needle

Tapestry needle for weaving in the yarn ends.

BABETTE
ULMER

Gauge:

28,5 sts and 28 Rd = 10 x 10 cm (4" x 4") measured over cable pattern using 4 mm (US 6) needles.
Measure the swatch after washing and drying.

Abbreviations

Cb 1/1 = Slip next st onto cable needle and leave at back of work, k1, then k1 from cable needle

Cf 1/1 = Slip next st onto cable needle and leave at front of work, k1, then k1 from cable needle

C4b p1+k1/k2 = Slip next 2 sts onto cable needle and leave at back of work, k2, then k the first st from cable needle and p the second st from cable needle

C4b p2/k2 = Slip next 2 sts onto cable needle and leave at back of work, k2, then p2 from cable needle

C4b 2/2 = Slip next 2 sts onto cable needle and leave at back of work, k2, k2 from cable needle

C4f k2/k1+p1 = Slip next 2 sts onto cable needle and leave at front of work, p1, k1, k2 from cable needle

C4f 2/2 = Slip next 2 sts onto cable needle and leave at front of work, k2, then k2 from cable needle

C4f k2/p2 = Slip next 2 sts onto cable needle and leave at front of work, p2, then k2 from cable needle

C4b k2/p2 = Slip next 2 sts onto cable needle and leave at back of work, p2, then k2 from cable needle

k = knit

k2tog = knit two stitches together

p = purl

m(s) = stitch marker(s)

pm = place stitch marker

p2tog = purl two stitches together **rm** = remove stitch marker

Rd = Round

rm = remove stitch marker

ssk = (slip, slip, knit) slip first stitch purlwise, slip second stitch knitwise, k2tog through back loop

st(s) = stitch(es)

Pattern note: If an **m** is not mentioned in the pattern, then lift it off and continue knitting

And here we go!

Quick Guide

(For fast readers and knitters 😊)

Cast on 120 sts using 4 mm needles. Distribute the sts evenly on 4 needles of the set of double pointed needles – 30 sts per needle. Mark start of Rd = **pm**.

Rib band

Work 48 Rds * p2, k2, repeat from * throughout.

Cable pattern

Work 42 Rds following **chart 1** and then work the decreases following **chart 2**.

BABETTE
ULMER

Pull the remaining 24 sts together with the thread.

Sew in yarn ends.



Detailed instructions

(every round is given)

Cast on 120 sts using 4 mm needles. Distribute the sts evenly on 4 needles of the set of double pointed needles – 30 sts per needle. Mark start of Rd = **pm**.

Rib band

Rd 1: * P2, k2, repeat from * throughout.

Rd 2 - 48: Repeat Rd 1 another 47 times.

Cable pattern

Follow chart 1 or work according to the written pattern as follows:

Rd 1: * P8, k4, p8, repeat from * throughout.

Rd 2 - 4: Repeat R 1 another 3 more times.

Rd 5: * P6, C4b p1+k1/k2, C4f k2/k1+p1, p6, repeat from * throughout.

Rd 6: * P6, k2, p1, k2, p1, k2, p6, repeat from * throughout.

Rd 7: * P4, C4b k2/p2, p1, k2, p1, C4f k2/p2, p4, repeat from * throughout.

Rd 8: * P4, k2, p3, k2, p3, k2, p4, repeat from * throughout.

Rd 9: * P2, C4b k2/p2, p2, Cb 1/1, Cf 1/1, p2, C4f k2/p2, p2, repeat from * throughout.

Rd 10: * P2, k2, p4, k4, p4, k2, p2, repeat from * throughout.

Rd 11: * C4b k2/p2, p2, C4b k2/p2, C4f k2/p2, p2, C4f k2/p2, repeat from * throughout.

Rd 12: * K2, p4, k2, p4, k2, p4, k2, repeat from * throughout.

Rd 13: * C4f k2/p2, C4b p2/k2, p4, C4f k2/p2, C4b p2/k2, repeat from * throughout.

Rd 14: * P2, k4, p8, k4, p2, repeat from * throughout.

Rd 15: * P2, C4b 2/2, p8, C4f 2/2, p2, repeat from * throughout.

Rd 16: Work as Rd 14.

Rd 17: * C4b p2/k2, C4f k2/p2, p4, C4b p2/k2, C4f k2/p2, repeat from * throughout.

Rd 18: * K2, p4, k2, p4, k2, p4, k2, repeat from * throughout.

Rd 19: * C4f k2/p2, p2, C4f k2/p2, C4b p2/k2, p2, C4b p2/k2, repeat from * throughout.

Rd 20: * P2, k2, p4, k4, p4, k2, p2, repeat from * throughout.

Rd 21: * P2, C4f k2/p2, p2, Cf 1/1, Cb 1/1, p2, C4b p2/k2, p2, repeat from * throughout.

Rd 22: * P4, k2, p3, k2, p3, k2, p4, repeat from * throughout.

Rd 23: * P4, C4f k2/p2, p1, k2, p1, C4b p2/k2, p4, repeat from * throughout.

Rd 24: * P6, k2, p1, k2, p1, k2, p6, repeat from * throughout.

Rd 25: * P6, C4f k2/p2, C4b p2/k2, p6, repeat from * throughout.

Rd 26: * P8, k4, p8, repeat from * throughout.

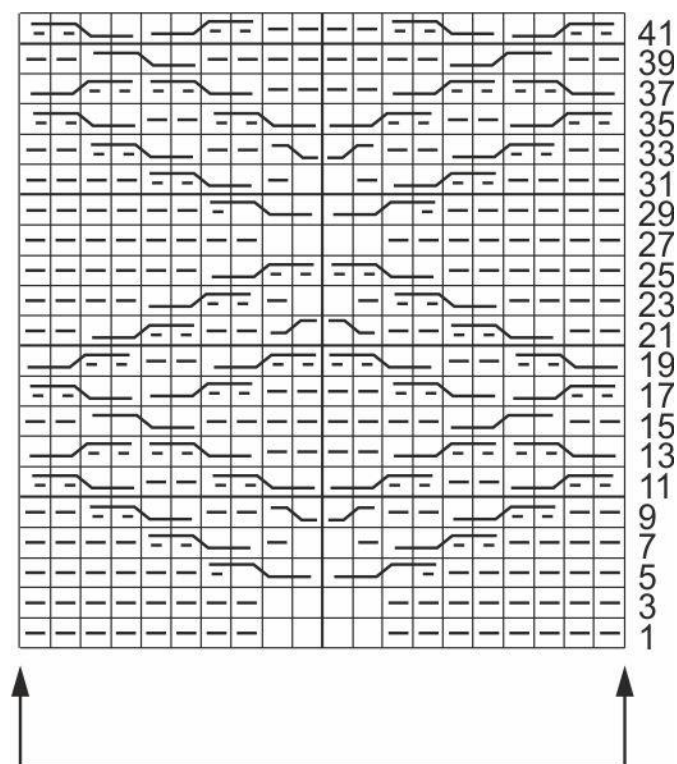
Rd 27 and 42: Repeat Rd 3 – 18 once.




BABETTE
ULMER


Chart 1


Only odd Rds are shown; in the even Rds work the sts as they appear. Repeat the 20 sts repeat between the arrows throughout. Work Rds 1 – 42 once again.




Keys

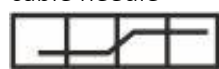
 = k1


 = p1


 = Slip next st onto cable needle and leave at front of work, k1, then k1 from cable needle


 = Slip next st onto cable needle and leave at back of work, k1, then k1 from cable needle


 = Slip next 2 sts onto cable needle and leave at front of work, k2, then k2 from cable needle

 = Slip next 2 sts onto cable needle and leave at back of work, k2, then k2 from cable needle

 = Slip next 2 sts onto cable needle and leave at front of work, p1, k1, k2 from cable needle

 = Slip next 2 sts onto cable needle and leave at back of work, k2, then k the first st from cable needle and p the second st from cable needle

 = Slip next 2 sts onto cable needle and leave at front of work, p2, then k2 from cable needle

 = Slip next 2 sts onto cable needle and leave at back of work, k2, then p2 from cable needle

Decreases

Follow chart 2 or work according to the written pattern as follows:

Rd 43: * C4f k2/p2, p2, k1, ssk, p2, k2tog, k1, p2, C4b p2/k2, repeat from * throughout. (-12 = 108 sts).

Rd 44: * P2, k2, p2, k1, ssk, k2tog, k1, p2, k2, p2, repeat from * throughout (-12 = 96 sts).

Rd 45: * P2, C4f k2/p2, ssk, k2tog, C4b p2/k2, p2, repeat from * throughout (-12 = 84 sts).

Rd 46: * P4, k1, ssk, k2tog, k1, p4, repeat from * throughout. (-12 = 72 sts).

Rd 47: * 2 times p2tog, C4b 2/2, 2 times p2tog, repeat from * throughout (-24 = 48 sts).

Rd 48: * P2, k4, p2, repeat from * throughout.

Rd 49: * P2tog, ssk, k2tog, p2tog, repeat from * throughout (-24 = 24 sts).

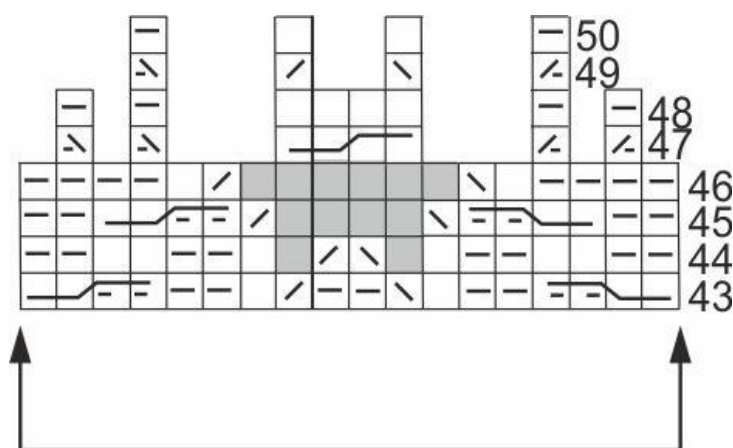
Rd 50: * P1, k2, p1, repeat from * throughout.

Pull the remaining 24 sts together with the thread.

Sew in yarn ends.

Chart 2

Every Rd is shown. Repeat the initial 20 sts repeat between the arrows throughout. Work Rds 43 – 50 once.



Keys

= k1
 — = p1
 / = k2tog
 = no meaning; sts not available
 \ = p2tog

/ \ = ssk (= slip first stitch purlwise, slip second stitch knitwise, k2tog through back loop)

= Slip next 2 sts onto cable needle and leave at front of work, k2, then k2 from cable needle

= Slip next 2 sts onto cable needle and leave at front of work, p2, then k2 from cable needle

= Slip next 2 sts onto cable needle and leave at back of work, k2, then p2 from cable needle