



Originally, I planned this rectangular wrap as a collection of samples for a mosaic workshop at a local yarn store. Therefore, the basic idea is creating a scarf or wrap from some kind of construction kit: You can make it your own by deciding on length, width, stitch patterns, and pattern sequence. The "construction kit" contains seven different mosaic patterns plus a sequence which serves as dividing line between the patterns. If there is a pattern you don't like, you can just omit it and repeat another one. And if the whole picture is too erratic for your taste, just switch between two or three patterns. Or, if you like the original, you can just follow the pattern to recreate it, without further calculations.

Measurements: 188 x 52 cm (before washing)

225 x 52 cm (after washing; blocking didn't change anything)

Basic construction:

Each sequence consists of a section with a mosaic pattern and one (or two) sections of garter stitch rows. These are, on the one hand, a design element, but on the other hand they are also meant as an aid, since with their help it is easier to see which color is up next. The various sections of a segment are separated from one another by columns of slipped stitches.

If you intend to use the construction kit to build your own individual wrap or scarf, you should follow two rules:

- The garter row areas should spread evenly (that is they should be sometimes on the left, sometimes in the middle and sometimes on the right side). Since these surfaces stretch more than the mosaic surfaces after washing, the scarf would otherwise distort.
- If you want to make the scarf narrower, you should take care to maintain the specified ratio of stripes to mosaic.

Basic principles of mosaic knitting

- ◆ „Mosaic knitting“ is just another term for patterns made of slipped stitches.
- ◆ In contrast to Fair Isle patterns, you always work with just one color at a time.
- ◆ Each two rows (one on the right side, one on the wrong side) are knitted in one color.
- ◆ On the right side, you alternate between knit stitches and slipped stitches (slipping **with yarn in back**).
- ◆ On the wrong side, the previous knitted stitches are knitted again; the previous slipped stitches are slipped again, this time **with yarn in front**.
- ◆ (In principle, you can, of course, purl the knitted stitches from the previous row, on the wrong side. But this will give you a slightly different picture. I don't recommend it for the patterns I used here.)

Hints and abbreviations

st(s)	stitch(es)
k	knit
p	purl
() [] rep.	repeat sts between brackets (to the end of the row if there is no other specification). Rep. to the last X sts means you should still have X stitches on the left needle.
MM	stitch marker
pM	place marker
sM	slip marker
garter stitch	knit on right and wrong side
sl	slip stitch (purlwise) with yarn in back

This pattern is for private use only. Do not distribute, copy or resell.


© Ute Nawratil (2017)


Blog: <http://wollke7.blogspot.de/>

Instagram: una04

Composition of the sample wrap

Cast on 126 sts with color **A** (black).

Mosaic Pattern	Nr. of rep.	Ratio Stripes / Mosaic		Color
I. Band of Bricks	1	-		B1
II. Chains	8	1/3 : 2/3		B1
I. Band of Bricks	1	-		B2
III. Small Diamonds	5	1/4 : 1/2 : 1/4		B2
I. Band of Bricks	1	-		B1
IV. Large Zigzag	4	ca. 2/3 : 1/3		B1
I. Band of Bricks	1	-		B2
V. Stairs	10	1/3 : 1/3 : 1/3		B2
I. Band of Bricks	1	-		B2

Mosaic Pattern	Nr. of rep.	Ratio Stripes / Mosaic		Color
VI. Stars	6	1/3 : 2/3		B2
I. Band of Bricks	1	-		B1
VII. Trellis	4	1/4 : 1/2 : 1/4		B1
I. Band of Bricks	1	-		B1
VIII. Serpentine	12	1/3 : 2/3		B1
I. Band of Bricks	1	-		B2

To finish, knit one more row in color **A**, and bind off loosely on the wrong side.

If you use different Zauberballs (or any other gradient yarn):

The color changes indicated above (**B1**, **B2**) are not binding. Since each ball is differently wound, you'll have to improvise. When changing colors, continue with a similar shade; otherwise you'll get optical breaks.

Materials

Yarn:

- 220 g Schachenmayr Regia 4-ply (75% wool, 25% polyamide), 420 m / 100 g, color 2066 (black) (= color **A**)
- 100 g Schoppel Crazy Zauberball (75% wool, 25% polyamide), 420 m / 100 g, color 2231 ("Buntmetall") (= color **B1**)
- 90 g Schoppel Crazy Zauberball (75% wool, 25% polyamide), 420 m / 100 g, color 2092 ("Schokoladenseite") (= color **B2**)

circular needles US size 5 (3,75 mm)

2 stitch markers

Mosaic Construction Kit

Element I: Band of Bricks (for the borders and separation of the different segments)

Row	Color	Edge	Pattern repeat	Edge
1-4	A	k3	k all	k3
5	B	k3	k3, sl1 (k7, sl1) rep. to the last 7 sts, k4	k3
6	All wrong side rows: slip slipped stitches with yarn in front, knit all others			
7-8	B	as rows 5-6		
9-10	A	k3	k all	k3
11	B	k3	(k7, sl1) rep. to the last 4 sts, sl1	k3
13	B	as row 11		
15-16	A	as rows 9-10		
17-28	Repeat rows 5-16 one more time.			
29-32	A	k3	k all	k3



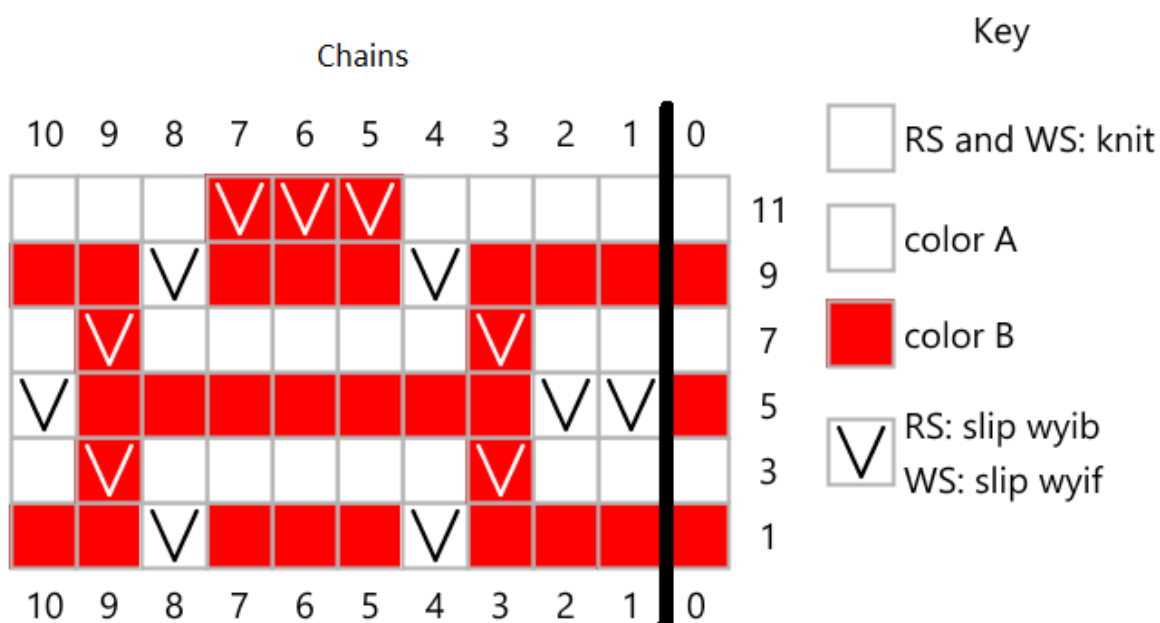
Attention! Do **not** knit the first column of the charts („0“). Its only purpose is to show in which color the respective row is worked.

The charts don't show wrong side rows.

Always remove stitch markers in the last wrong side row of your sequence.

Element II: Chains

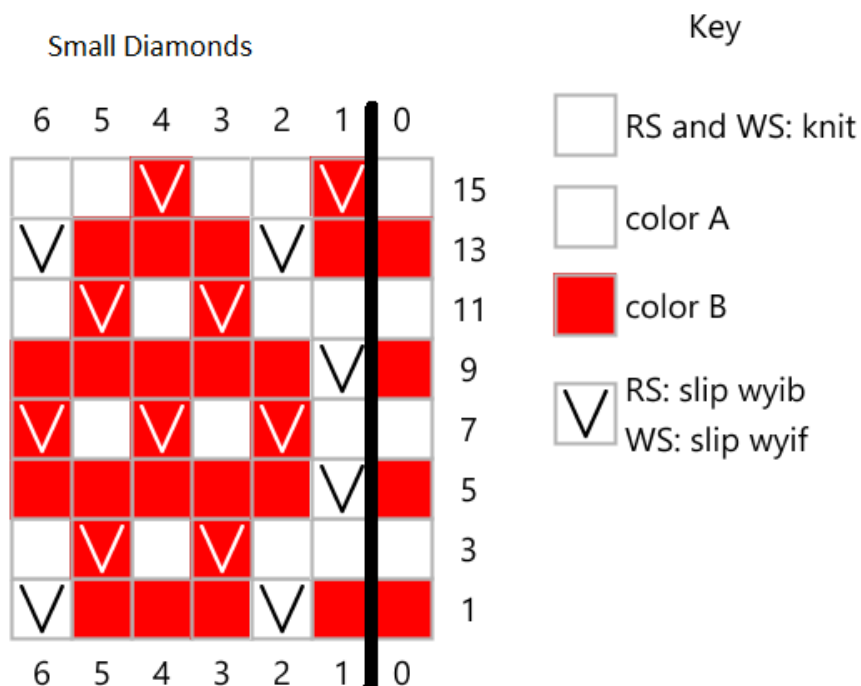
Ratio in sample wrap: 1/3 garter stitch stripes (always incl. slip stitch separation), 2/3 mosaic



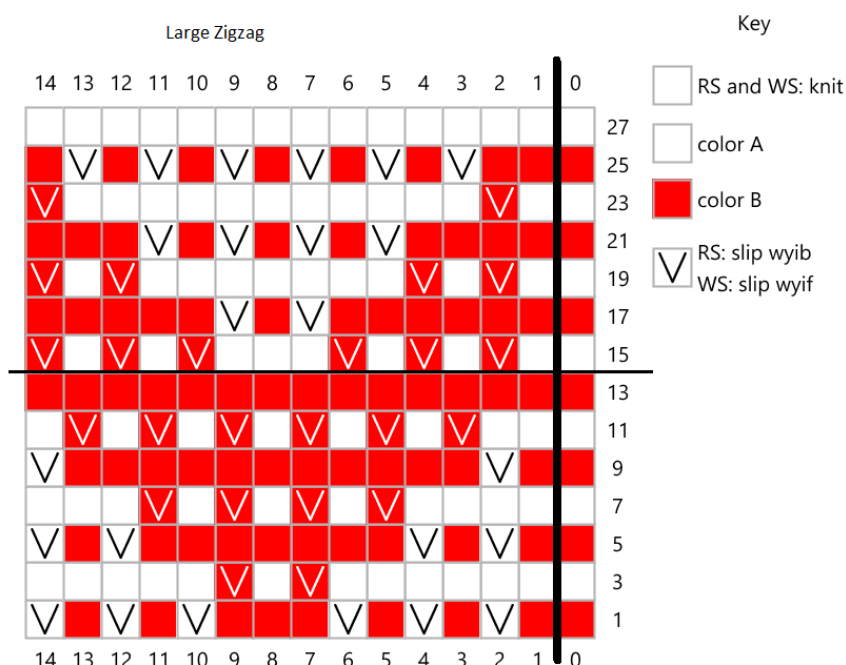
Row	Color	Edge	Pattern repeat	Edge
1	B	k3	k33, pM, sl1, (k1, sl1) x3, (k3, sl1, k3, sl1, k2) x8	k3
3	A	k3	k to MM, sM, k1, (sl1, k1) x3, (k2, sl1, k5, sl1, k1) x8	k3
5	B	k3	k to MM, sM, sl1, (k1, sl1) x3, (sl2, k7, sl1) x8	k3
7	A	k3	k to MM, sM, k1, (sl1, k1) x3, (k2, sl1, k5, sl1, k1) x8	k3
9	B	k3	k to MM, sM, sl1, (k1, sl1) x3, (k3, sl1, k3, sl1, k2) x8	k3
11	A	k3	k to MM, sM, k1, (sl1, k1) x3, (k4, sl3, k3) x8	k3
Repeat rows 1-12 as often as desired.				

Element III: Small Diamonds

(Ratio: 1/4 garter stitch stripes, 1/2 mosaic, 1/4 garter stitch stripes)



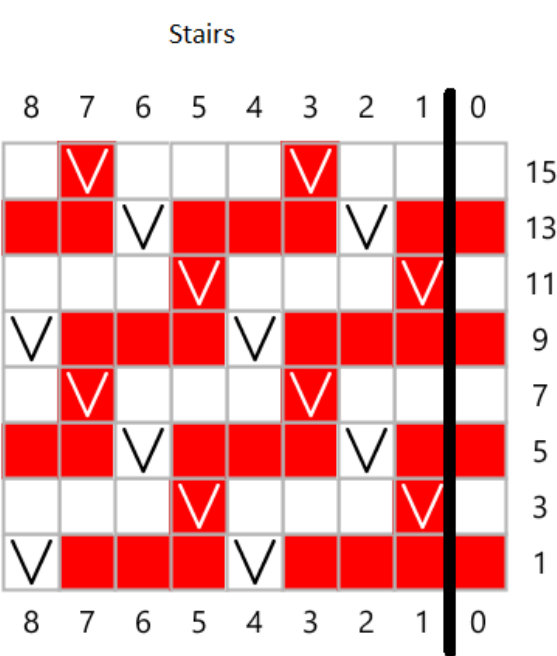
Row	Color	Edge	Pattern repeat	Edge
1	B	k3	k23, pM, sl1, (k1, sl1) x3, (k1, sl1, k3, sl1) x10 pM, sl1, (k1, sl1) x3, k23	k3
3	A	k3	k to MM, sM, k1, (sl1, k1) x3, (k2, sl1, k1, sl1, k1) x10 sM, k1, (sl1, k1) x3, k23	k3
5	B	k3	k to MM, sM, sl1, (k1, sl1) x3, (sl1, k5,) x10 sM, sl1, (k1, sl1) x3, k23	k3
7	A	k3	k to MM, sM, k1, (sl1, k1) x3, [(k1, sl1) x3] x10 sM, k1, (sl1, k1) x3, k23	k3
9	B	k3	k to MM, sM, sl1, (k1, sl1) x3, (sl1, k5,) x10 sM, sl1, (k1, sl1) x3, k23	k3
11	A	k3	k to MM, sM, k1, (sl1, k1) x3, (k2, sl1, k1, sl1, k1) x10 sM, k1, (sl1, k1) x3, k23	k3
13	B	k3	k to MM, sM, sl1, (k1, sl1) x3, (k1, sl1, k3, sl1) x10 sM, sl1, (k1, sl1) x3, k23	k3
15	A	k3	k to MM, sM, k1, (sl1, k1) x3, (sl1, k2, sl1, k2) x10 sM, k1, (sl1, k1) x3, k23	k3
<i>Repeat rows 1-16 as often as desired.</i>				



IV: Large Zigzag

(Ratio: ca. 2/3 mosaic, 1/3 garter stitch stripes)

Row	Color	Edge	Pattern repeat	Edge
1	B	k3	[(k1, sl1) x3, k3, (sl1, k1) x2, sl1] x5, pM, sl1, (k1, sl1) x3, k43	k3
3	A	k3	(k6, sl1, k1, sl1, k5,) x5, sM, k1, (sl1, k1) x3, k43	k3
5	B	k3	[(k1, sl1) x2, k7, sl1, k1, sl1] x5, sM, sl1, (k1, sl1) x3, k43	k3
7	A	k3	[k4, (sl1, k1) x4, k2] x5, sM, k1, (sl1, k1) x3, k43	k3
9	B	k3	(k1, sl1, k11, sl1) x5, sM, sl1, (k1, sl1) x3, k43	k3
11	A	k3	[k2, (sl1, k1) x6] x5, sM, k1, (sl1, k1) x3, k43	k3
13	B	k3	k to MM, sl1, (k1, sl1) x3, k43	k3
15	A	k3	[(k1, sl1) x3, k3, (sl1, k1) x2, sl1] x5, pM, k1, (sl1, k1) x3, k43	k3
17	B	k3	(k6, sl1, k1, sl1, k5,) x5, sM, sl1, (k1, sl1) x3, k43	k3
19	A	k3	[(k1, sl1) x2, k7, sl1, k1, sl1] x5, sM, k1, (sl1, k1) x3, k43	k3
21	B	k3	[k4, (sl1, k1) x4, k2] x5, sM, sl1, (k1, sl1) x3, k43	k3
23	A	k3	(k1, sl1, k11, sl1) x5, sM, k1, (sl1, k1) x3, k43	k3
25	B	k3	[k2, (sl1, k1) x6] x5, sM, sl1, (k1, sl1) x3, k43	k3
27	A	k3	k to MM, k1, (sl1, k1) x3, k43	k3
Repeat rows 1-28 as often as desired. (It's possible to stop after row 14.)				



Key

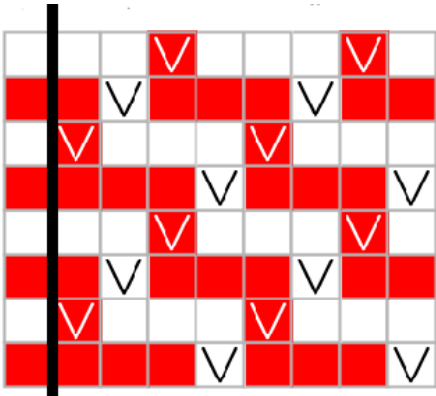
RS and WS: knit

color A

color B

V

 RS: slip wyib
WS: slip wyif

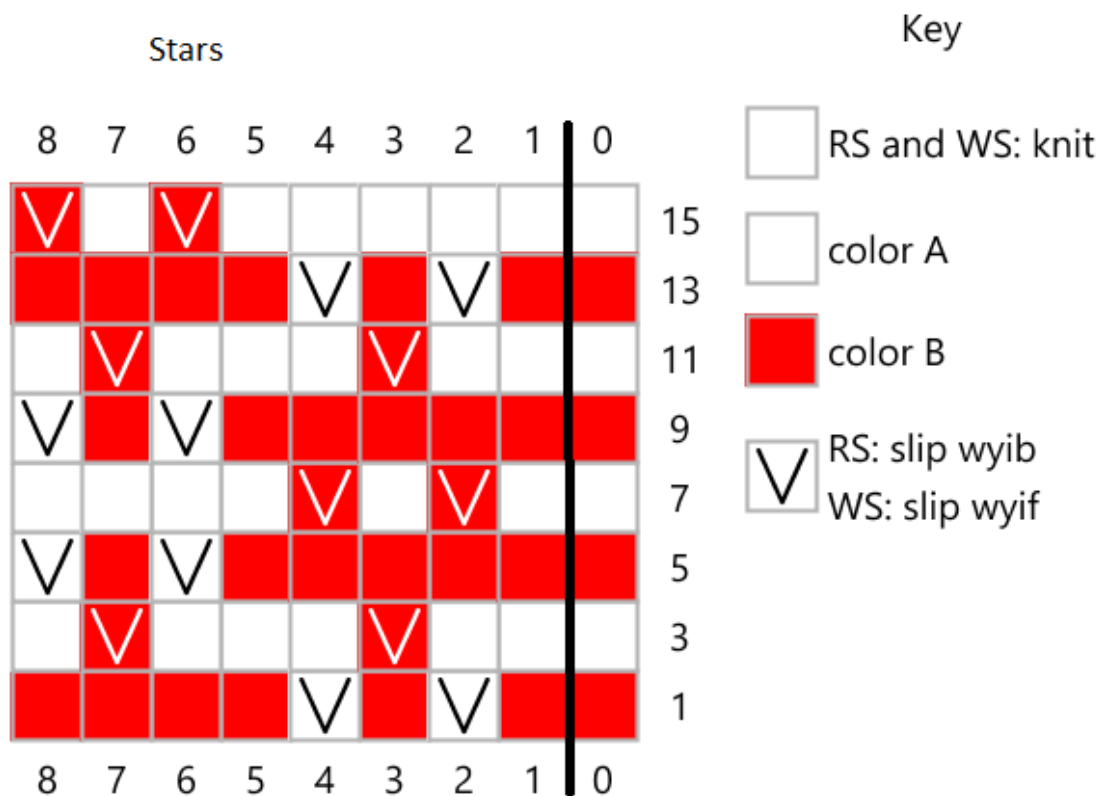


Mirrored version (don't knit the last column after the black line):

Element V: Stairs

Ratio: 1/3 mosaic, 1/3 garter stitch stripes, 1/3 mosaic)

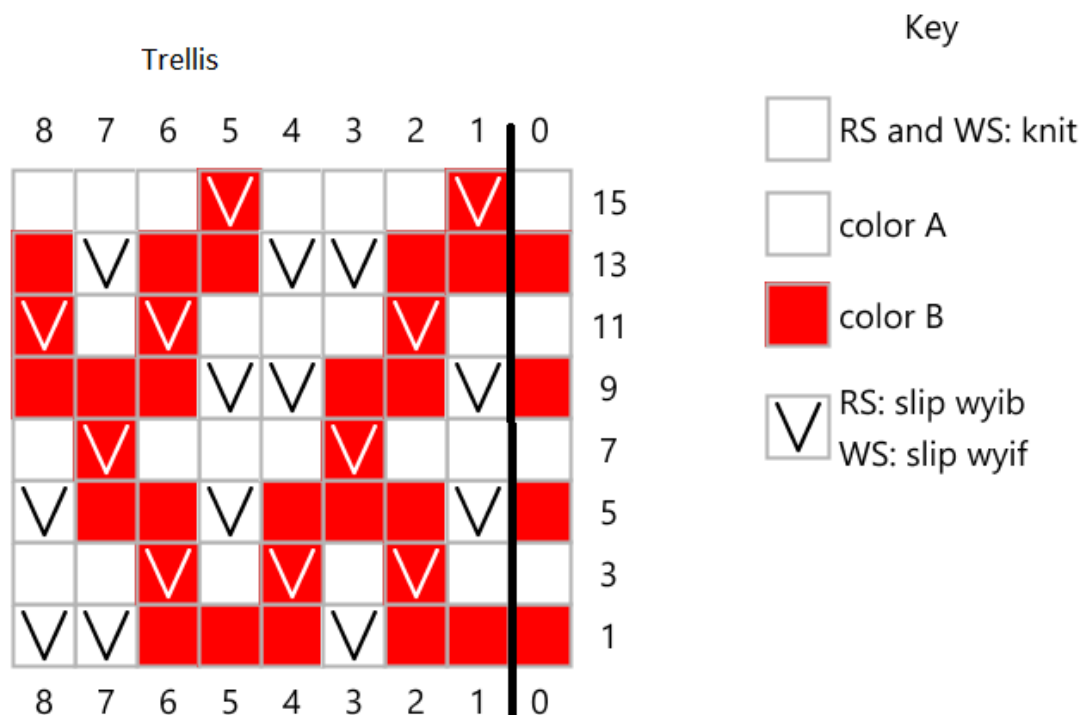
Row	Color	Edge	Pattern repeat	Edge
1	B	k3	(k3, sl1) x10, pM, (sl1, k1) x3, sl1, k26, (sl1, k1) x3, sl1, pM, (sl1, k3) x10	k3
3	A	k3	(sl1, k3) x10, sM, k1, (sl1, k1) x3, k27, (sl1, k1) x3, sM, (k3, sl1) x10	k3
5	B	k3	(k1, sl1, k2) x10, sM, (sl1, k1) x3, sl1, k26, (sl1, k1) x3, sl1, sM, (k2, sl1, k1) x10	k3
7	A	k3	(k2, sl1, k1) x10, sM, k1, (sl1, k1) x3, k27, (sl1, k1) x3, sM, (k1, sl1, k2) x10	k3
Repeat rows 1-8 as often as desired.				



Element VI: Stars

Ratio: ca. 1/3 garter stitch stripes, 2/3 mosaic)

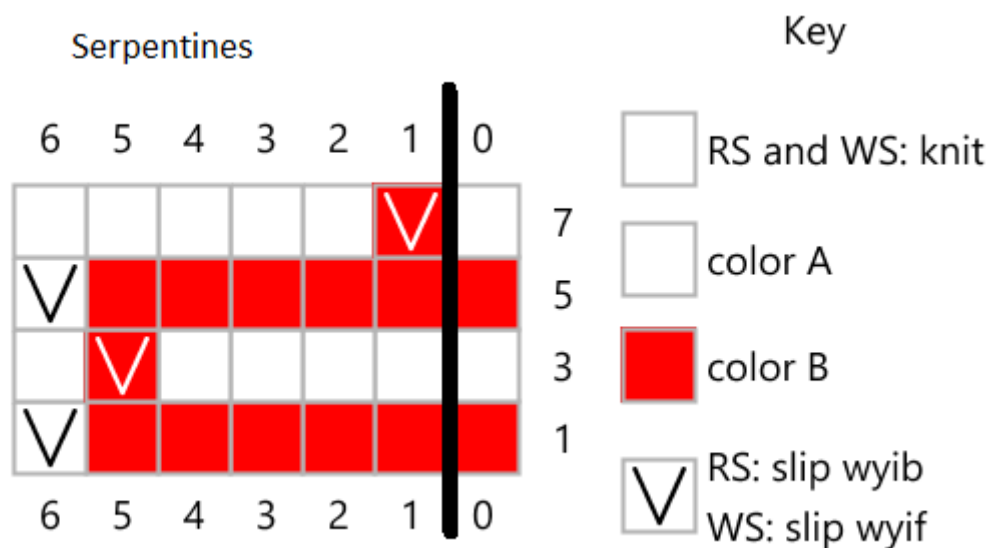
Row	Color	Edge	Pattern repeat	Edge
1	B	k3	k33, pM, (sl1, k1) x3, sl1, [(k1, sl1) x2, k4] x10	k3
3	A	k3	k to MM, sM, k1, (sl1, k1) x3, (k2, sl1, k3, sl1, k1) x10	k3
5	B	k3	k to MM, sM, (sl1, k1) x3, sl1, (k5, sl1, k1, sl1) x10	k3
7	A	k3	k to MM, sM, k1, (sl1, k1) x3, [(k1, sl1) x2, k4] x10	k3
9	B	k3	k to MM, sM, (sl1, k1) x3, sl1, (k5, sl1, k1, sl1) x10	k3
11	A	k3	k to MM, sM, k1, (sl1, k1) x3, (k2, sl1, k3, sl1, k1) x10	k3
13	B	k3	k to MM, sM, (sl1, k1) x3, sl1, [(k1, sl1) x2, k4] x10	k3
15	A	k3	k to MM, sM, k1, (sl1, k1) x3, (k5, sl1, k1, sl1) x10	k3
<i>Repeat rows 1-16 as often as desired.</i>				



Element VII: Trellis

(Ratio: 1/4 garter stitch stripes, 1/2 mosaic, 1/4 garter stitch stripes)

Row	Color	Edge	Pattern repeat	Edge
1	B	k3	k21, pM, sl1, (k1, sl1) x3, (k2, sl1, k3, sl2) x8 pM, sl1, (k1, sl1) x3, k21	k3
3	A	k3	k to MM, sM, k1, (sl1, k1) x3, [(k1, sl1) x3, k2, sM, k1, (sl1, k1) x3, k21	k3
5	B	k3	k to MM, sM, (sl1, k1) x3, sl1, (sl1, k3, sl1, k2, sl1) x8, sM, sl1, (k1, sl1) x3, k21	k3
7	A	k3	k to MM, sM, k1, (sl1, k1) x3, (k2, sl1, k3, sl1, k1) x8 sM, k1, (sl1, k1) x3, k21	k3
9	B	k3	k to MM, sM, (sl1, k1) x3, sl1, (sl1, k2, sl2, k3) x8, sM, sl1, (k1, sl1) x3, k21	k3
11	A	k3	k to MM, sM, k1, (sl1, k1) x3, (k1, sl1, k3, sl1, k1, sl1) x8 sM, k1, (sl1, k1) x3, k21	k3
13	B	k3	k to MM, sM, (sl1, k1) x3, sl1, (k2, sl2, k2, sl1, k1) x8 sM, sl1, (k1, sl1) x3, k21	k3
15	A	k3	k to MM, sM, k1, (sl1, k1) x3, (sl1, k3, sl1, k3) x8 sM, k1, (sl1, k1) x3, k21	k3
Repeat rows 1-16 as often as desired.				



VIII. Serpentine

(Ratio: ca. 2/3 mosaic, 1/3 garter stitch stripes)

Row	Color	Edge	Pattern repeat	Edge
	B	k3	(k5, sl1) x12, pM, sl1, (k1, sl1) x3, k41	k3
	A	k3	(k4, sl1, k1) x12, sM, k1, (sl1, k1) x3, k41	k3
	B	k3	(k5, sl1) x12, sM, sl1, (k1, sl1) x3, k41	k3
	A	k3	(sl1, k5,) x12, sM, k1, (sl1, k1) x3, k41	k3
<i>Repeat rows 1-8 as often as desired.</i>				

Tip for changing colors:

The usual procedure is to cross the two threads on the back, at the beginning of each right side row. Especially with longer sections in one color, I tend to forget to cross the threads, occasionally. Therefore, I have become accustomed to knit the second stitch of each row with both threads. This makes the edge somewhat more stable and the color change completely invisible.