



MOONFLOWERS SHAWL

by Ambah O'Brien

Knit up your next favourite shawl. Pair irresistible yarn with this beautiful Moonflower motif, and you'll enjoy every stitch as well as the wearable result. Worked tip to tip, choose between the fingering or DK/light worsted weight versions to knit up this shallow triangle shawl. Pick yarns that contrast boldly against each other and watch as the Moonflowers emerge.

Pattern includes charted and written instructions for the mosaic pattern and two PDF files with the charts showing either a Light or Dark main colour option to knit from. Print the version that best suits your yarn choice.

MOONFLOWERS SHAWL

DIMENSIONS

Fingering (DK/light worsted)
Wingspan: 77 (76)"/ 192.5 (190) cm
Depth: 14.5 (16)"/ 36.5 (40) cm
Measurements taken after blocking.

YARN

Fingering (DK/light worsted)
C1: 375 (400) yd/343 (365) m
C2: 282 (300) yd/258 (275) m

Shown in

Fingering Weight: Moondrake Co., BFL
Silk (fingering weight, 80% superwash
Bluefaced Leicester, 20% mulberry silk,
420 yd/385 m per 100 g) C1: *Cheeky
Pink*, C2: *Electric Berry*
DK/Worsted Weight: Love and
Speckles, Singles, (fingering weight,
100% superwash Merino, 400 yd/
365 m per 100 g), C1: *Deep Magic (held
double)*

Spincycle Yarns, Dream State, (worsted
weight, 100% American wool, 150
yd/138 m per skein), C2: *Midsommar*

NEEDLES

US 5 (7)/3.75 (4.5) mm needles, or size
required to obtain gauge

NOTIONS

Optional stitch markers, tapestry
needle

GAUGE

28 (22.5) sts and 40 (35) rows =
4"/10 cm in Moonflower Mosaic stitch,
blocked
Gauge is not crucial for this project, but
variations will affect yardage and final
measurements.

PATTERN NOTES

Mosaic knitting is most effective with highly contrasting colours. Choose a C2 that contrasts with C1. This can be a tonal contrast; for example a dark shade against a light shade; or it can be a colour contrast, for example contrast a purple with a red or a pink with a green to allow each colour to stand out.

INSTRUCTIONS

FINGERING WEIGHT

With C1, CO 8 sts and knit 1 row.

Work MOONFLOWERS INCREASE A (page 3) Rows **1 - 96** once. 32 sts

Work MOONFLOWERS INCREASE B (page 4) Rows **1 - 96 twice**. 80 sts

Work MOONFLOWERS INCREASE B Rows **1 - 90** once more. 102 sts

Work MOONFLOWERS INCREASE B Rows **91 - 92 working the kfb as a k1 for
no increase**. 102 sts

Work MOONFLOWERS DECREASE A (page 5) Rows **7 - 96** once. 80 sts

Work MOONFLOWERS DECREASE A Rows **1 - 96 twice**. 32 sts

Work MOONFLOWERS DECREASE B (page 7) Rows **1 - 96** once. 8 sts

Work FINISHING (page 7).

DK/LIGHT WORSTED WEIGHT

With C1, CO 8 sts and knit 1 row.

Work MOONFLOWERS INCREASE A (page 3) Rows **1 - 96** once. 32 sts

Work MOONFLOWERS INCREASE B (page 4) Rows **1 - 96 twice**. 80 sts

Work MOONFLOWERS INCREASE B Rows **1 - 42** once more. 90 sts

Work MOONFLOWERS INCREASE B Rows **43 - 44 working the kfb as a k1 for
no increase**. 90 sts

Work MOONFLOWERS DECREASE A (page 5) Rows **55 - 96** once. 80 sts

Work MOONFLOWERS DECREASE A Rows **1 - 96 twice**. 32 sts

Work MOONFLOWERS DECREASE B (page 7) Rows **1 - 96** once. 8 sts

Work FINISHING (page 7).

MOONFLOWERS SHAWL

ABBREVIATIONS

BO: bind off

C: colour

k: knit

kfb: knit into the front and back of stitch

p: purl

rep: repeat

RS: right side

sl: slip stitch purlwise with yarn in back unless otherwise noted

ssk: slip, slip, knit. Slip the first stitch as if to knit, slip the second stitch as if to knit, then slide the left needle into the front part of both stitches and knit them together.

st/s: stitch/es

WS: wrong side

wyif: with yarn in front

() []: stitch pattern repeat

MOONFLOWERS INCREASE A

Refer to written instructions below or charted instructions (page 8).

Row 1 (RS): With C2, k3, sl1, k1, sl3.

Row 2 and all WS rows to Row 96: Using colour worked in previous row, p2, k all k sts in previous row, sl wyif all previously sl sts to last 2 sts, sl2 wyif.

Rows 3, 7, 11, 15, 19, 23: With C1, k2, kfb, k to last 2 sts, sl2. (+1 st)

Row 5: With C2, k2, (sl1, k1) twice, sl3.

Row 9: With C2, k2, (k1, sl1) 3 times, sl2.

Row 13: With C2, k2, (sl1, k1) 3 times, sl3.

Row 17: With C2, k3, (sl1, k1) 3 times, sl3.

Row 21: With C2, k2, (sl1, k1) 4 times, sl3.

Row 25: With C2, k3, (sl1, k1) 3 times, k2, sl3.

Row 27: With C1, k2, kfb, k5, (sl1, k1) twice, sl2. (+1 st)

Row 29: With C2, k2, (sl1, k1) 4 times, k2, sl3.

Row 31: With C1, k2, kfb, k to last 2 sts, sl2. (+1 st)

Row 33: With C2, k3, (sl1, k1) twice, k2, (sl1, k1) twice, sl3.

Row 35: With C1, k2, kfb, k3, sl1, k1, sl1, k5, sl2. (+1 st)

Row 37: With C2, k2, (sl1, k1) 3 times, k2, (sl1, k1) twice, sl3.

Row 39: With C1, k2, kfb, k to last 2 sts, sl2. (+1 st)

Row 41: With C2, (k3, sl1) twice, (k1, sl1) 4 times, sl2.

Row 43: With C1, k2, kfb, (k1, sl1) twice, k9, sl2. (+1 st)

Row 45: With C2, k2, (sl1, k1) twice, k2, (sl1, k1) 4 times, sl3.

Row 47: With C1, k2, kfb, k to last 2 sts, sl2. (+1 st)

Row 49: With C2, k3, (sl1, k1) 3 times, k4, (sl1, k1) twice, sl3.

Row 51: With C1, k2, kfb, k5, sl1, k3, sl1, k5, sl2. (+1 st)

Row 53: With C2, k2, (sl1, k1) 3 times, k2, sl3, k3, sl1, k1, sl3.

Row 55: With C1, k2, kfb, k4, sl1, k7, sl1, k3, sl2. (+1 st)

Row 57: With C2, k3, (sl1, k1) twice, k2, sl2, k3, sl2, k3, sl3.

Row 59: With C1, k2, kfb, k3, sl1, k4, sl1, k1, sl1, k4, sl1, k1, sl2. (+1 st)

Row 61: With C2, k2, (sl1, k1) 3 times, k2, sl2, k3, sl2, k3, sl3.

Row 63: With C1, k2, kfb, k6, sl1, k7, sl1, k3, sl2. (+1 st)

Row 65: With C2, k3, (sl1, k1) 4 times, k2, sl3, k3, sl1, k1, sl3.

Row 67: With C1, k2, kfb, k9, sl1, k3, sl1, k5, sl2. (+1 st)

Row 69: With C2, k2, (sl1, k1) 6 times, k4, (sl1, k1) twice, sl3.

Row 71: With C1, k2, kfb, k to last 2 sts, sl2. (+1 st)

Row 73: With C2, k3, (sl1, k1) 3 times, k2, (sl1, k1) 6 times, sl3.

Row 75: With C1, k2, kfb, k5, sl1, k1, sl1, k13, sl2. (+1 st)

Row 77: With C2, k2, (sl1, k1) 4 times, k2, (sl1, k1) 6 times, sl3.

Row 79: With C1, k2, kfb, k to last 2 sts, sl2. (+1 st)

Row 81: With C2, k3, (sl1, k1) twice, k2, (sl1, k1) 4 times, k4, (sl1, k1) twice, sl3.

Row 83: With C1, k2, kfb, k3, sl1, k1, sl1, k7, sl1, k3, sl1, k5, sl2. (+1 st)

Row 85: With C2, k2, (sl1, k1) 3 times, k2, (sl1, k1) 3 times, k2, sl3, k3, sl1, k1, sl3.

Row 87: With C1, k2, kfb, k12, sl1, k7, sl1, k3, sl2. (+1 st)

MOONFLOWERS SHAWL

Row 89: With C2, (k3, sl1) twice, (k1, sl1) 3 times, (k3, sl2) 3 times, sl1.

Row 91: With C1, k2, kfb, (k1, sl1) twice, k7, sl1, k4, sl1, k1, sl1, k4, sl1, k1, sl2. (+1 st)

Row 93: With C2, k2, (sl1, k1) twice, k2, (sl1, k1) 4 times, k2, (sl2, k3) twice, sl3.

Row 95: With C1, k2, kfb, k14, sl1, k7, sl1, k3, sl2. (+1 st)

MOONFLOWERS INCREASE B

Refer to written instructions below or charted instructions (page 9).

Row 1 (RS): With C2, k3, sl1, ([k1, sl1] twice, k5, [sl1, k1] 3 times, k2, sl3, k3, sl1) rep to last 4 sts, k1, sl3.

Row 2 and all WS rows to Row 96: Using colour worked in previous row, p2, k all k sts in previous row, sl wyif all previously sl sts to last 2 sts, sl2 wyif.

Row 3: With C1, k2, kfb, k1, (k4, sl1, k3, sl1, k7, [sl1, k3] twice) rep to last 4 sts, k2, sl2. (+1 st)

Row 5: With C2, k2, sl1, k1, sl1, (k1, sl1, k3, sl3, k3, [sl1, k1] 3 times, k4, sl1, k1, sl1) rep to last 4 sts, k1, sl3.

Row 7: With C1, k2, kfb, k2, (k2, sl1, k7, sl1, k13) rep to last 4 sts, k2, sl2. (+1 st)

Row 9: With C2, k3, sl1, k1, sl1, ([k3, sl2] twice, k3, [sl1, k1] 5 times, sl1) rep to last 4 sts, k1, sl3.

Row 11: With C1, k2, kfb, k3, (sl1, k4, sl1, k1, sl1, k4, sl1, k11) rep to last 4 sts, k2, sl2. (+1 st)

Row 13: With C2, k2, (sl1, k1) twice, sl1, ([k3, sl2] twice, k3, [sl1, k1] 5 times, sl1) rep to last 4 sts, k1, sl3.

Row 15: With C1, k2, kfb, k4, (k2, sl1, k7, sl1, k13) rep to last 4 sts, k2, sl2. (+1 st)

Row 17: With C2, k2, (k1, sl1) 3 times, (k1, sl1, k3, sl3, k3, [sl1, k1] 3 times, k4, sl1, k1, sl1) rep to last 4 sts, k1, sl3.

Row 19: With C1, k2, kfb, k5, (k4, sl1, k3, sl1, k7, sl1, k3, sl1, k3) rep to last 4 sts, k2, sl2. (+1 st)

Row 21: With C2, k1, (k1, sl1) 4 times, ([k1, sl1] twice, k5, [sl1, k1] 3 times, k2, sl3, k3, sl1) rep to last 4 sts, k1, sl3.

Row 23: With C1, k2, kfb, k6, (k14, sl1, k7, sl1, k1) rep to last 4 sts, k2, sl2. (+1 st)

Row 25: With C2, k3, (sl1, k1) 3 times, k1, ([k1, sl1] 6 times, [k3, sl2] twice, k2) rep to last 4 sts, k1, sl3.

Row 27: With C1, k2, kfb, k5, sl1, k1, (sl1, k11, sl1, k4, sl1, k1, sl1, k4) rep to last 4 sts, sl1, k1, sl2. (+1 st)

Row 29: With C2, k2, (sl1, k1) 4 times, k1, ([k1, sl1] 6 times, [k3, sl2] twice, k2) rep to last 4 sts, k1, sl3.

Row 31: With C1, k2, kfb, k8, (k14, sl1, k7, sl1, k1) rep to last 4 sts, k2, sl2. (+1 st)

Row 33: With C2, (k3, sl1, k1, sl1) twice, ([k1, sl1] twice, k5, [sl1, k1] 3 times, k2, sl3, k3, sl1) rep to last 4 sts, k1, sl3.

Row 35: With C1, k2, kfb, k3, sl1, k1, sl1, k3, (k4, sl1, k3, sl1, k7, [sl1, k3] twice) rep to last 4 sts, k2, sl2. (+1 st)

Row 37: With C2, k2, (sl1, k1) 3 times, k2, sl1, k1, sl1, (k1, sl1, k3, sl3, k3, [sl1, k1] 3 times, k4, sl1, k1, sl1) rep to last 4 sts, k1, sl3.

Row 39: With C1, k2, kfb, k10, (k2, sl1, k7, sl1, k13) rep to last 4 sts, k2, sl2. (+1 st)

Row 41: With C2, k3, sl1, k3, (sl1, k1) 3 times, sl1, ([k3, sl2] twice, k3, [sl1, k1] 5 times, sl1) rep to last 4 sts, k1, sl3.

Row 43: With C1, k2, kfb, (k1, sl1) twice, k7, (sl1, k4, sl1, k1, sl1, k4, sl1, k11) rep to last 4 sts, k2, sl2. (+1 st)

Row 45: With C2, k2, sl1, k1, sl1, k3, (sl1, k1) 3 times, sl1, ([k3, sl2] twice, k3, [sl1, k1] 5 times, sl1) rep to last 4 sts, k1, sl3.

Row 47: With C1, k2, kfb, k12, (k2, sl1, k7, sl1, k13) rep to last 4 sts, k2, sl2. (+1 st)

Row 49: With C2, k2, (k1, sl1) 3 times, k5, sl1, k1, sl1, (k1, sl1, k3, sl3, k3, [sl1, k1] 3 times, k4, sl1, k1, sl1) rep to last 4 sts, k1, sl3.

Row 51: With C1, k2, kfb, k5, (sl1, k3) twice, (k4, sl1, k3, sl1, k7, [sl1, k3] twice) rep to last 4 sts, k2, sl2. (+1 st)

Row 53: With C2, k1, (k1, sl1) 3 times, k3, sl3, k3, sl1, ([k1, sl1] twice, k5, [sl1, k1] 3 times, k2, sl3, k3, sl1) rep to last 4 sts, k1, sl3.

Row 55: With C1, k2, kfb, k4, sl1, k7, sl1, k1, (k14, sl1, k7, sl1, k1) rep to last 4 sts, k2, sl2. (+1 st)

Row 57: With C2, k2, (k1, sl1) twice, (k3, sl2) twice, k2, ([k1, sl1] 6 times, [k3, sl2] twice, k2) rep to last 4 sts, k1, sl3.

Row 59: With C1, k2, kfb, k3, sl1, k4, sl1, k1, sl1, k4, (sl1, k11, sl1, k4, sl1, k1, sl1, k4) rep to last 4 sts, sl1, k1, sl2. (+1 st)

Row 61: With C2, k1, (k1, sl1) 3 times, (k3, sl2) twice, k2, ([k1, sl1] 6 times, [k3, sl2] twice, k2) rep to last 4 sts, k1, sl3.

MOONFLOWERS SHAWL

Row 63: With C1, k2, kfb, k6, sl1, k7, sl1, k1, **(k14, sl1, k7, sl1, k1)** rep to last 4 sts, k2, sl2. (+1 st)

Row 65: With C2, k2, (k1, sl1) 4 times, k3, sl3, k3, sl1, **([k1, sl1] twice, k5, [sl1, k1] 3 times, k2, sl3, k3, sl1)** rep to last 4 sts, k1, sl3.

Row 67: With C1, k2, kfb, k9, sl1, k3, sl1, k3, **(k4, sl1, k3, sl1, k7, [sl1, k3] twice)** rep to last 4 sts, k2, sl2. (+1 st)

Row 69: With C2, k2, (sl1, k1) 6 times, k4, sl1, k1, sl1, **(k1, sl1, k3, sl3, k3, [sl1, k1] 3 times, k4, sl1, k1, sl1)** rep to last 4 sts, k1, sl3.

Row 71: With C1, k2, kfb, k18, **(k2, sl1, k7, sl1, k13)** rep to last 4 sts, k2, sl2. (+1 st)

Row 73: With C2, k2, (k1, sl1) 3 times, k3, (sl1, k1) 5 times, sl1, **([k3, sl2] twice, k3, [sl1, k1] 5 times, sl1)** rep to last 4 sts, k1, sl3.

Row 75: With C1, k2, kfb, k5, sl1, k1, sl1, k11, **(sl1, k4, sl1, k1, sl1, k4, sl1, k11)** rep to last 4 sts, k2, sl2. (+1 st)

Row 77: With C2, k1, (k1, sl1) 4 times, k2, (k1, sl1) 6 times, **([k3, sl2] twice, k3, [sl1, k1] 5 times, sl1)** rep to last 4 sts, k1, sl3.

Row 79: With C1, k2, kfb, k20, **(k2, sl1, k7, sl1, k13)** rep to last 4 sts, k2, sl2. (+1 st)

Row 81: With C2, (k3, sl1, k1, sl1) twice, (k1, sl1) twice, k5, sl1, k1, sl1, **(k1, sl1, k3, sl3, k3, [sl1, k1] 3 times, k4, sl1, k1, sl1)** rep to last 4 sts, k1, sl3.

Row 83: With C1, k2, kfb, k3, sl1, k1, sl1, k7, (sl1, k3) twice, **(k4, sl1, k3, sl1, k7, sl1, k3, sl1, k3)** rep to last 4 sts, k2, sl2. (+1 st)

Row 85: With C2, k1, (k1, sl1) 3 times, k2, (k1, sl1) 3 times, k3, sl3, k3, sl1, **([k1, sl1] twice, k5, [sl1, k1] 3 times, k2, sl3, k3, sl1)** rep to last 4 sts, k1, sl3.

Row 87: With C1, k2, kfb, k12, sl1, k7, sl1, k1, **(k14, sl1, k7, sl1, k1)** rep to last 4 sts, k2, sl2. (+1 st)

Row 89: With C2, (k3, sl1) twice, (k1, sl1) 3 times, (k3, sl2) twice, k2, **([k1, sl1] 6 times, [k3, sl2] twice, k2)** rep to last 4 sts, k1, sl3.

Row 91: With C1, k2, kfb, (k1, sl1) twice, k7, sl1, k4, sl1, k1, sl1, k4, **(sl1, k11, sl1, k4, sl1, k1, sl1, k4)** rep to last 4 sts, sl1, k1, sl2. (+1 st)

Row 93: With C2, k1, (k1, sl1) twice, k2, (k1, sl1) 4 times, (k3, sl2) twice, k2, **([k1, sl1] 6 times, [k3, sl2] twice, k2)** rep to last 4 sts, k1, sl3.

Row 95: With C1, k2, kfb, k14, sl1, k7, sl1, k1, **(k14, sl1, k7, sl1, k1)** rep to last 4 sts, k2, sl2. (+1 st)

MOONFLOWERS DECREASE A

Refer to written instructions below or charted instructions (page 10).

Row 1: With C1, k2, ssk, k14, sl1, k7, sl1, k1, **(k14, sl1, k7, sl1, k1)** rep to last 4 sts, k2, sl2. (-1 st)

Row 2 and all WS rows to Row 96: Using colour worked in previous row, p2, k all k sts in previous row, sl wyif all previously sl sts to last 2 sts, sl2 wyif.

Row 3: With C2, k1, (k1, sl1) twice, k2, (k1, sl1) 4 times, (k3, sl2) twice, k2, **([k1, sl1] 6 times, [k3, sl2] twice, k2)** rep to last 4 sts, k1, sl3.

Row 5: With C1, k2, ssk, (k1, sl1) twice, k7, sl1, k4, sl1, k1, sl1, k4, **(sl1, k11, sl1, k4, sl1, k1, sl1, k4)** rep to last 4 sts, sl1, k1, sl2. (-1 st)

Row 7: With C2, (k3, sl1) twice, (k1, sl1) 3 times, (k3, sl2) twice, k2, **([k1, sl1] 6 times, [k3, sl2] twice, k2)** rep to last 4 sts, k1, sl3.

Row 9: With C1, k2, ssk, k12, sl1, k7, sl1, k1, **(k14, sl1, k7, sl1, k1)** rep to last 4 sts, k2, sl2. (-1 st)

Row 11: With C2, k1, (k1, sl1) 3 times, k2, (k1, sl1) 3 times, k3, sl3, k3, sl1, **([k1, sl1] twice, k5, [sl1, k1] 3 times, k2, sl3, k3, sl1)** rep to last 4 sts, k1, sl3.

Row 13: With C1, k2, ssk, k3, sl1, k1, sl1, k7, (sl1, k3) twice, **(k4, sl1, k3, sl1, k7, [sl1, k3] twice)** rep to last 4 sts, k2, sl2. (-1 st)

Row 15: With C2, k2, (k1, sl1) twice, k2, (k1, sl1) 4 times, k5, sl1, k1, sl1, **(k1, sl1, k3, sl3, k3, [sl1, k1] 3 times, k4, sl1, k1, sl1)** rep to last 4 sts, k1, sl3.

Row 17: With C1, k2, ssk, k20, **(k2, sl1, k7, sl1, k13)** rep to last 4 sts, k2, sl2. (-1 st)

Row 19: With C2, k1, (k1, sl1) 4 times, k2, (k1, sl1) 6 times, **([k3, sl2] twice, k3, [sl1, k1] 5 times, sl1)** rep to last 4 sts, k1, sl3.

Row 21: With C1, k2, ssk, k5, sl1, k1, sl1, k11, **(sl1, k4, sl1, k1, sl1, k4, sl1, k11)** rep to last 4 sts, k2, sl2. (-1 st)

Row 23: With C2, k2, (k1, sl1) 3 times, k2, (k1, sl1) 6 times, **([k3, sl2] twice, k3, [sl1, k1] 5 times, sl1)** rep to last 4 sts, k1, sl3.

Row 25: With C1, k2, ssk, k18, **(k2, sl1, k7, sl1, k13)** rep to last 4 sts, k2, sl2. (-1 st)

Row 27: With C2, k1, (k1, sl1) 6 times, k5, sl1, k1, sl1, **(k1, sl1, k3, sl3, k3, [sl1, k1] 3 times, k4, sl1, k1, sl1)** rep to last 4 sts, k1, sl3.

MOONFLOWERS SHAWL

Row 29: With C1, k2, ssk, k9, (sl1, k3) twice, (k4, sl1, k3, sl1, k7, [sl1, k3] twice) rep to last 4 sts, k2, sl2. (-1 st)

Row 31: With C2, k2, (k1, sl1) 4 times, k3, sl3, k3, sl1, ([k1, sl1] twice, k5, [sl1, k1] 3 times, k2, sl3, k3, sl1) rep to last 4 sts, k1, sl3.

Row 33: With C1, k2, ssk, k6, sl1, k7, sl1, k1, (k14, sl1, k7, sl1, k1) rep to last 4 sts, k2, sl2. (-1 st)

Row 35: With C2, k1, (k1, sl1) 3 times, (k3, sl2) twice, k2, ([k1, sl1] 6 times, [k3, sl2] twice, k2) rep to last 4 sts, k1, sl3.

Row 37: With C1, k2, ssk, k3, sl1, k4, sl1, k1, sl1, k4, (sl1, k11, sl1, k4, sl1, k1, sl1, k4) rep to last 4 sts, sl1, k1, sl2. (-1 st)

Row 39: With C2, k3, sl1, k1, sl1, (k3, sl2) twice, k2, ([k1, sl1] 6 times, [k3, sl2] twice, k2) rep to last 4 sts, k1, sl3.

Row 41: With C1, k2, ssk, k4, sl1, k7, sl1, k1, (k14, sl1, k7, sl1, k1) rep to last 4 sts, k2, sl2. (-1 st)

Row 43: With C2, k1, (k1, sl1) 3 times, k3, sl3, k3, sl1, ([k1, sl1] twice, k5, [sl1, k1] 3 times, k2, sl3, k3, sl1) rep to last 4 sts, k1, sl3.

Row 45: With C1, k2, ssk, k5, (sl1, k3) twice, (k4, sl1, k3, sl1, k7, [sl1, k3] twice) rep to last 4 sts, k2, sl2. (-1 st)

Row 47: With C2, k2, (k1, sl1) 3 times, k5, sl1, k1, sl1, (k1, sl1, k3, sl3, k3, [sl1, k1] 3 times, k4, sl1, k1, sl1) rep to last 4 sts, k1, sl3.

Row 49: With C1, k2, ssk, k12, (k2, sl1, k7, sl1, k13) rep to last 4 sts, k2, sl2. (-1 st)

Row 51: With C2, k1, (k1, sl1) twice, k2, (k1, sl1) 4 times, ([k3, sl2] twice, k3, [sl1, k1] 5 times, sl1) rep to last 4 sts, k1, sl3.

Row 53: With C1, k2, ssk, (k1, sl1) twice, k7, (sl1, k4, sl1, k1, sl1, k4, sl1, k11) rep to last 4 sts, k2, sl2. (-1 st)

Row 55: With C2, k3, sl1, k2, (k1, sl1) 4 times, ([k3, sl2] twice, k3, [sl1, k1] 5 times, sl1) rep to last 4 sts, k1, sl3.

Row 57: With C1, k2, ssk, k10, (k2, sl1, k7, sl1, k13) rep to last 4 sts, k2, sl2. (-1 st)

Row 59: With C2, k1, (k1, sl1) 3 times, k3, sl1, k1, sl1, (k1, sl1, k3, sl3, k3, [sl1, k1] 3 times, k4, sl1, k1, sl1) rep to last 4 sts, k1, sl3.

Row 61: With C1, k2, ssk, k3, (sl1, k1) twice, k2, (k4, sl1, k3, sl1, k7, sl1, k3, sl1, k3) rep to last 4 sts, k2, sl2. (-1 st)

Row 63: With C2, (k3, sl1, k1, sl1) twice, ([k1, sl1] twice, k5, [sl1, k1] 3 times, k2, sl3, k3, sl1) rep to last 4 sts, k1, sl3.

Row 65: With C1, k2, ssk, k8, (k14, sl1, k7, sl1, k1) rep to last 4 sts, k2, sl2. (-1 st)

Row 67: With C2, k1, (k1, sl1) 4 times, k2, ([k1, sl1] 6 times, [k3, sl2] twice, k2) rep to last 4 sts, k1, sl3.

Row 69: With C1, k2, ssk, k5, sl1, k1, (sl1, k11, sl1, k4, sl1, k1, sl1, k4) rep to last 4 sts, sl1, k1, sl2. (-1 st)

Row 71: With C2, k2, (k1, sl1) 3 times, k2, ([k1, sl1] 6 times, [k3, sl2] twice, k2) rep to last 4 sts, k1, sl3.

Row 73: With C1, k2, ssk, k6, (k14, sl1, k7, sl1, k1) rep to last 4 sts, k2, sl2. (-1 st)

Row 75: With C2, k1, (k1, sl1) 4 times, ([k1, sl1] twice, k5, [sl1, k1] 3 times, k2, sl3, k3, sl1) rep to last 4 sts, k1, sl3.

Row 77: With C1, k2, ssk, k5, (k4, sl1, k3, sl1, k7, [sl1, k3] twice) rep to last 4 sts, k2, sl2. (-1 st)

Row 79: With C2, k2, (k1, sl1) 3 times, (k1, sl1, k3, sl3, k3, [sl1, k1] 3 times, k4, sl1, k1, sl1) rep to last 4 sts, k1, sl3.

Row 81: With C1, k2, ssk, k4, (k2, sl1, k7, sl1, k13) rep to last 4 sts, k2, sl2. (-1 st)

Row 83: With C2, k1, (k1, sl1) 3 times, ([k3, sl2] twice, k3, [sl1, k1] 5 times, sl1) rep to last 4 sts, k1, sl3.

Row 85: With C1, k2, ssk, k3, (sl1, k4, sl1, k1, sl1, k4, sl1, k11) rep to last 4 sts, k2, sl2. (-1 st)

Row 87: With C2, k3, sl1, k1, sl1, ([k3, sl2] twice, k3, [sl1, k1] 5 times, sl1) rep to last 4 sts, k1, sl3.

Row 89: With C1, k2, ssk, k2, (k2, sl1, k7, sl1, k13) rep to last 4 sts, k2, sl2. (-1 st)

Row 91: With C2, k2, sl1, k1, sl1, (k1, sl1, k3, sl3, k3, [sl1, k1] 3 times, k4, sl1, k1, sl1) rep to last 4 sts, k1, sl3.

Row 93: With C1, k2, ssk, k1, (k4, sl1, k3, sl1, k7, sl1, k3, sl1, k3) rep to last 4 sts, k2, sl2. (-1 st)

Row 95: With C2, k3, sl1, ([k1, sl1] twice, k5, [sl1, k1] 3 times, k2, sl3, k3, sl1) rep to last 4 sts, k1, sl3.

MOONFLOWERS SHAWL

MOONFLOWERS DECREASE B

Refer to written instructions below or charted instructions (page 11).

Row 1: With C1, k2, ssk, k14, sl1, k7, sl1, k3, sl2. (-1 st)

Row 2 and all WS rows to Row 96: Using colour worked in previous row, p2, k all k sts in previous row, sl wyif all previously sl sts to last 2 sts, sl2 wyif.

Row 3: With C2, k1, (k1, sl1) twice, k2, (k1, sl1) 4 times, (k3, sl2) twice, k3, sl3.

Row 5: With C1, k2, ssk, (k1, sl1) twice, k7, sl1, k4, sl1, k1, sl1, k4, sl1, k1, sl2. (-1 st)

Row 7: With C2, (k3, sl1) twice, (k1, sl1) 3 times, (k3, sl2) twice, k3, sl3.

Row 9: With C1, k2, ssk, k12, sl1, k7, sl1, k3, sl2. (-1 st)

Row 11: With C2, k1, (k1, sl1) 3 times, k2, (k1, sl1) 3 times, k3, sl3, k3, sl1, k1, sl3.

Row 13: With C1, k2, ssk, k3, sl1, k1, sl1, k7, (sl1, k3) twice, k2, sl2. (-1 st)

Row 15: With C2, k2, (k1, sl1) twice, k2, (k1, sl1) 4 times, k5, (sl1, k1) twice, sl3.

Row 17: With C1, k2, ssk, k to last 2 sts, sl2. (-1 st)

Row 19: With C2, k1, (k1, sl1) 4 times, k2, (k1, sl1) 7 times, sl2.

Row 21: With C1, k2, ssk, k5, sl1, k1, sl1, k13, sl2. (-1 st)

Row 23: With C2, k2, (k1, sl1) 3 times, k2, (k1, sl1) 7 times, sl2.

Row 25: With C1, k2, ssk, k to last 2 sts, sl2. (-1 st)

Row 27: With C2, k1, (k1, sl1) 6 times, k5, (sl1, k1) twice, sl3.

Row 29: With C1, k2, ssk, k9, sl1, k3, sl1, k5, sl2. (-1 st)

Row 31: With C2, k2, (k1, sl1) 4 times, k3, sl3, k3, sl1, k1, sl3.

Row 33: With C1, k2, ssk, k6, sl1, k7, sl1, k3, sl2. (-1 st)

Row 35: With C2, k1, (k1, sl1) 3 times, (k3, sl2) twice, k3, sl3.

Row 37: With C1, k2, ssk, k3, sl1, k4, sl1, k1, sl1, k4, sl1, k1, sl2. (-1 st)

Row 39: With C2, k3, sl1, k1, sl1, (k3, sl2) twice, k3, sl3.

Row 41: With C1, k2, ssk, k4, sl1, k7, sl1, k3, sl2. (-1 st)

Row 43: With C2, k1, (k1, sl1) 3 times, k3, sl3, k3, sl1, k1, sl3.

Row 45: With C1, k2, ssk, k5, sl1, k3, sl1, k5, sl2. (-1 st)

Row 47: With C2, k2, (k1, sl1) 3 times, k5, (sl1, k1) twice, sl3.

Row 49: With C1, k2, ssk, k to last 2 sts, sl2. (-1 st)

Row 51: With C2, k1, (k1, sl1) twice, k2, (k1, sl1) 5 times, sl2.

Row 53: With C1, k2, ssk, k1, sl1, k1, sl1, k9, sl2. (-1 st)

Row 55: With C2, (k3, sl1) twice, (k1, sl1) 4 times, sl2.

Row 57: With C1, k2, ssk, k to last 2 sts, sl2. (-1 st)

Row 59: With C2, k1, (k1, sl1) 3 times, k3, (sl1, k1) twice, sl3.

Row 61: With C1, k2, ssk, k3, sl1, k1, sl1, k5, sl2. (-1 st)

Row 63: With C2, k2, (k1, sl1) twice, k3, (sl1, k1) twice, sl3.

Row 65: With C1, k2, ssk, k to last 2 sts, sl2. (-1 st)

Row 67: With C2, k1, (k1, sl1) 4 times, k3, sl3.

Row 69: With C1, k2, ssk, k5, (sl1, k1) twice, sl2. (-1 st)

Row 71: With C2, k3, (sl1, k1) 3 times, k2, sl3.

Row 73: With C1, k2, ssk, k to last 2 sts, sl2. (-1 st)

Row 75: With C2, k1, (k1, sl1) 5 times, sl2.

Row 77: With C1, k2, ssk, k to last 2 sts, sl2. (-1 st)

Row 79: With C2, k2, (k1, sl1) 4 times, sl2.

Row 81: With C1, k2, ssk, k to last 2 sts, sl2. (-1 st)

Row 83: With C2, k1, (k1, sl1) 4 times, sl2.

Row 85: With C1, k2, ssk, k5, sl2. (-1 st)

Row 87: With C2, k2, (k1, sl1) 3 times, sl2.

Row 89: With C1, k2, ssk, k4, sl2. (-1 st)

Row 91: With C2, k1, (k1, sl1) 3 times, sl2.

Row 93: With C1, k2, ssk, k3, sl2. (-1 st)

Row 95: With C2, k2, (k1, sl1) twice, sl2.

FINISHING

Row 1 (RS): With C1, k6, sl2.

Row 2 (WS): BO knitwise loosely.

Weave in ends.

Block to given dimensions.

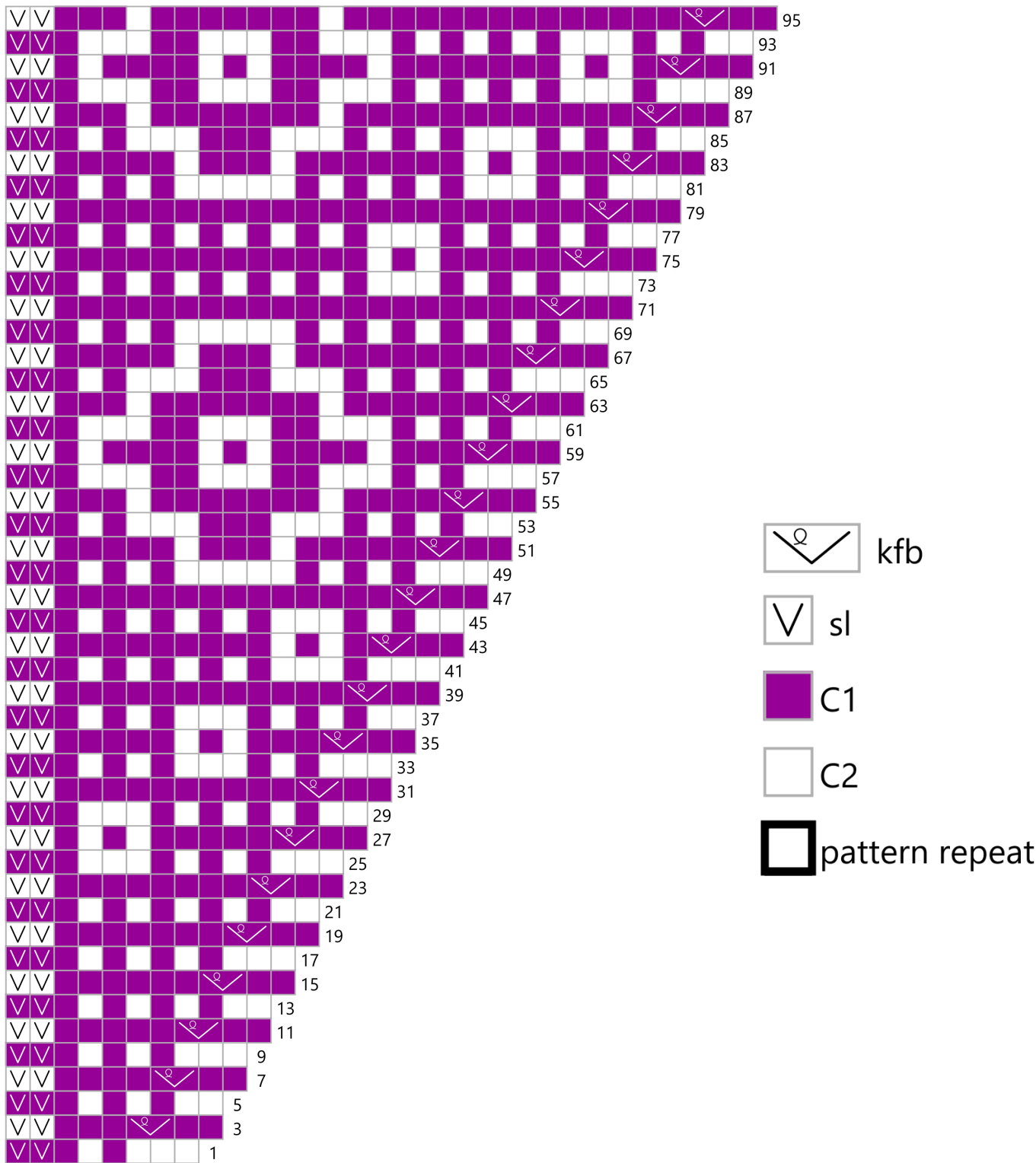
MOONFLOWERS SHAWL

MOONFLOWERS INCREASE A CHART INSTRUCTIONS

RS (odd) rows: Work rows right to left. Using the colour indicated in the first square of the row, knit all sts marked in this colour and sl the other sts.

WS (even) rows not shown: Using colour worked in previous row, p2, k all k sts in previous row, sl wyif all previously sl sts to last 2 sts, sl2 wyif.

MOONFLOWERS INCREASE A CHART



MOONFLOWERS SHAWL

MOONFLOWERS INCREASE B CHART INSTRUCTIONS

RS (odd) rows: Work rows right to left. Using the colour indicated in the first square of the row, knit all sts marked in this colour and sl the other sts.

WS (even) rows not shown: Using colour worked in previous row, p2, k all k sts in previous row, sl wyif all previously sl sts to last 2 sts, sl2 wyif.

 kfb

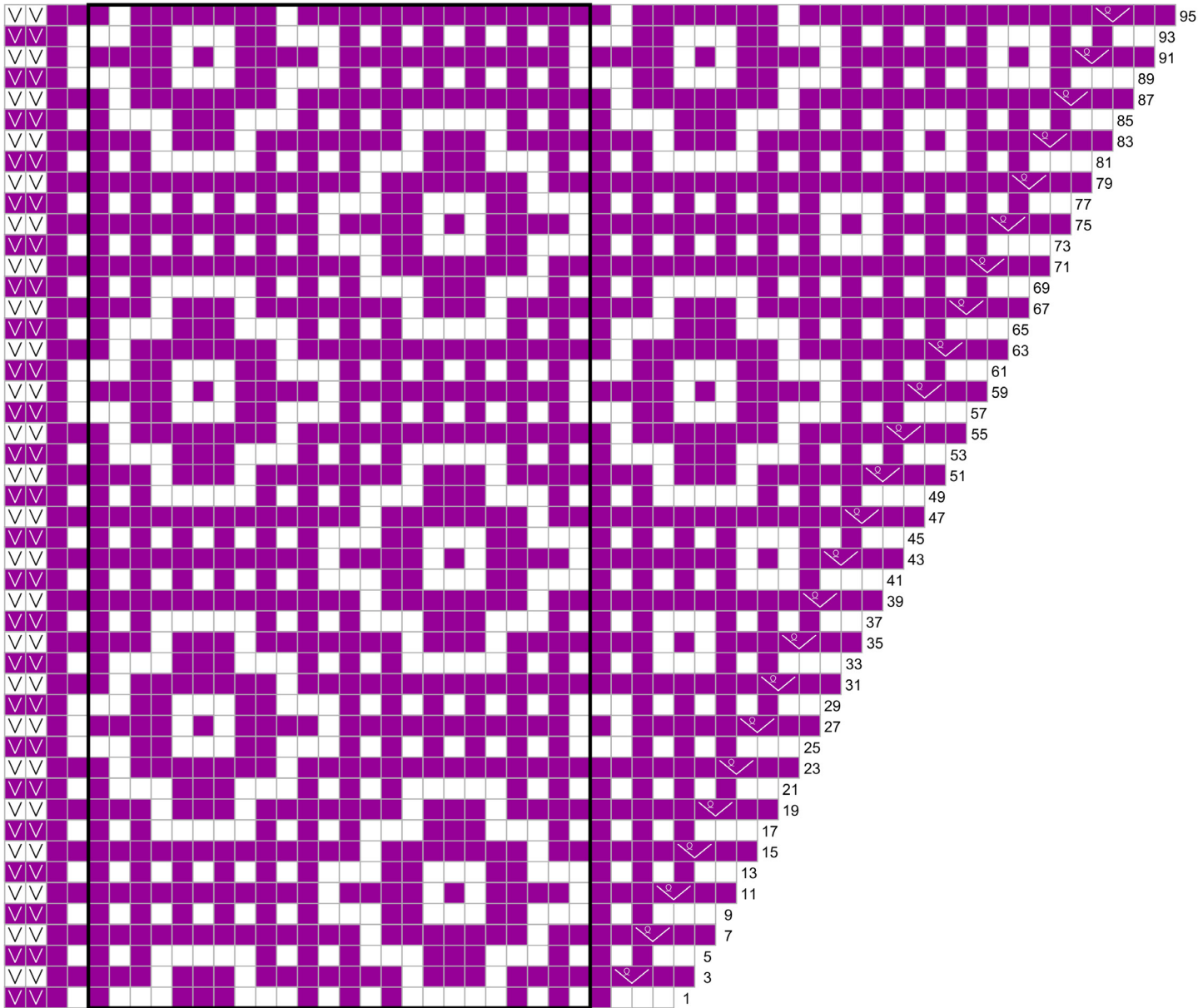
 sl

 C1

 C2

 pattern repeat

MOONFLOWERS INCREASE B CHART








MOONFLOWERS SHAWL

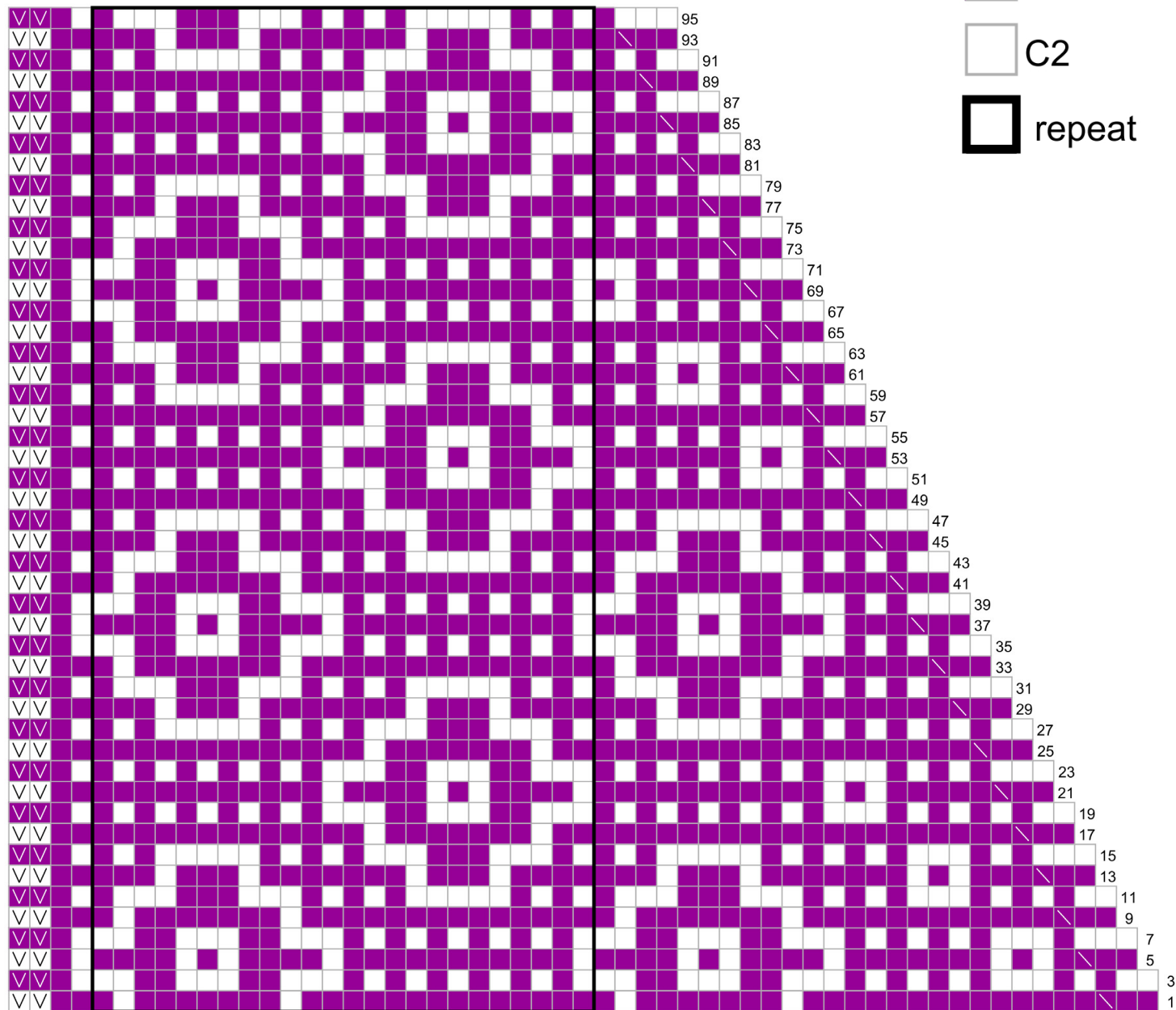
MOONFLOWERS DECREASE A CHART INSTRUCTIONS

RS (odd) rows: Work rows right to left. Using the colour indicated in the first square of the row, knit all sts marked in this colour and sl the other sts.

WS (even) rows not shown: Using colour worked in previous row, p2, k all k sts in previous row, sl wyif all previously sl sts to last 2 sts, sl2 wyif.

-  sl
-  ssk
-  C1
-  C2
-  repeat

MOONFLOWERS DECREASE A CHART



MOONFLOWERS SHAWL

MOONFLOWERS DECREASE B CHART INSTRUCTIONS

RS (odd) rows: Work rows right to left. Using the colour indicated in the first square of the row, knit all sts marked in this colour and sl the other sts.

WS (even) rows not shown: Using colour worked in previous row, p2, k all k sts in previous row, sl wyif all previously sl sts to last 2 sts, sl2 wyif.

MOONFLOWERS DECREASE B CHART

