

Mirage Herringbone Shawl



The Mirage Herringbone Shawl blends simplicity with striking visual intrigue. This mosaic-knit shawl is worked tip to tip, starting with a two color I-cord cast on for a seamless border around the entire shawl. Its classic herringbone pattern gets an unexpected twist as the colors reverse at the center, creating a stunning optical illusion. The interplay of light and dark shades draws the eye, giving the illusion of depth and movement.

The shape is an elongated triangle, giving you a bit more length without adding to the depth making this easy to wear in multiple ways.

Perfect for knitters looking for a project that is both meditative and bold, this shawl adds sophistication to any outfit. Choose your favorite contrasting colors to make the mirage come to life!

Size:

- Length: 82" / 205 cm (tip to tip, the longest edge)
- Width: 20" / 50 cm (at the center point)

Yarn: DK weight

Color A: 350 yds / 320 m

Color B: 350 yds / 320 m

Sample shown in Cardiff Cashmere classic (100% cashmere 122 yards / 112 meters)

Color A Silver 509

Color B Antracite 520

Needles:

US 6/ 4 mm

Gauge:

19 sts and 34 rows = 4" / 10 cm in garter stitch, after blocking

Notions:

- Stitch markers 2 (optional)
- Blocking tools
- Tapestry needle (for weaving in ends)



Abbreviations	
CO	Cast on
K	Knit
K3tog	Knit 3 sts together
PM	Place marker
SL	Slip
SSK	Slip knitwise, slip knitwise, knit slipped sts through back the loop
TBL	Through the back loop
WYIF	With yarn in front
WYIB	With yarn in back

I-Cord Cast On

Using your favorite provisional cast on method, CO 3 sts with color B. You will now make an I-Cord that will be used to pick up stitches.

- Row 1. Color A: K3, sl 3 sts purlwise back to left hand needle.
- Row 2. Color B: K3, sl 3 sts purlwise back to left hand needle.
- Row 3. Color A: K3, sl 3 sts purlwise back to left hand needle.
- Row 4. Color B: K3, sl 3 sts purlwise back to left hand needle.
- Row 5. Color A: K3, turn work 90 degrees clockwise and pick up and knit 1 st along the edge. Place 3 sts from provisional cast on left needle. With working yarn in front, rotate left hand needle 180 degrees so needle tip is pointing toward the left, place 3 sts on the right needle in re-oriented position (7 sts). Turn work, k3, pm, k1, pm, sl3wyif.

[Tutorial: I-Cord tab cast on - YouTube](#)

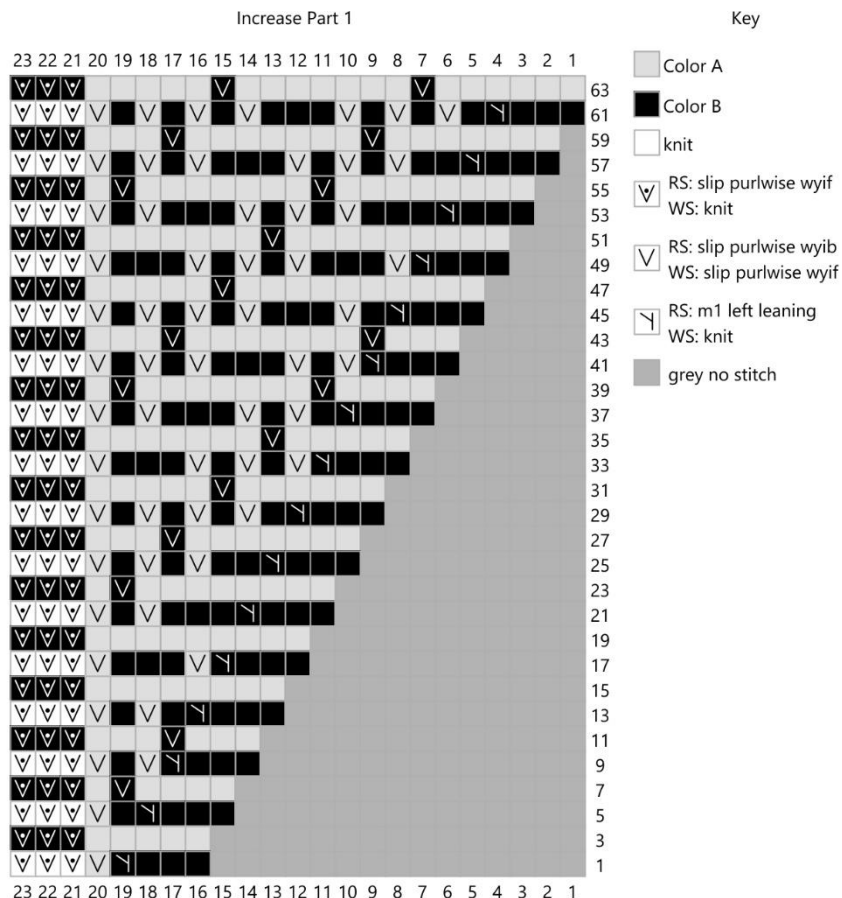
Move to Increase Part 1.

Increase Part 1

To create the I-Cord edges you will knit the **first 3 sts** and **sl the last 3 sts with yarn in front for each row**.

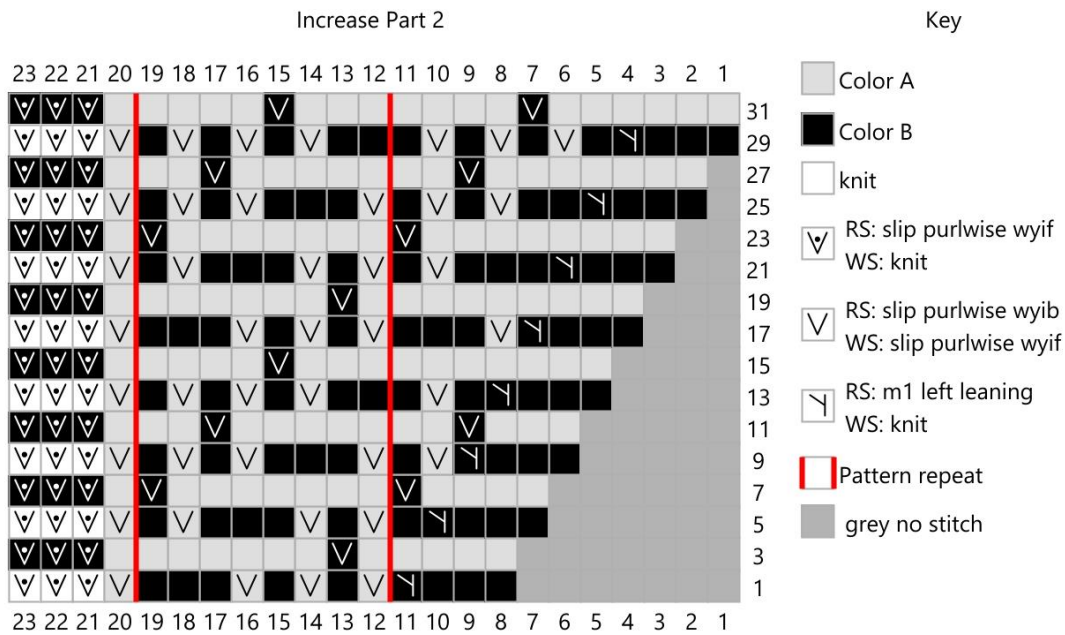
Note: Charts show right side only. On the wrong side rows knit the knits and slip the slips with the yarn in front.

Work the chart once then move to Increase Part 2 (23 sts).



Increase Part 2

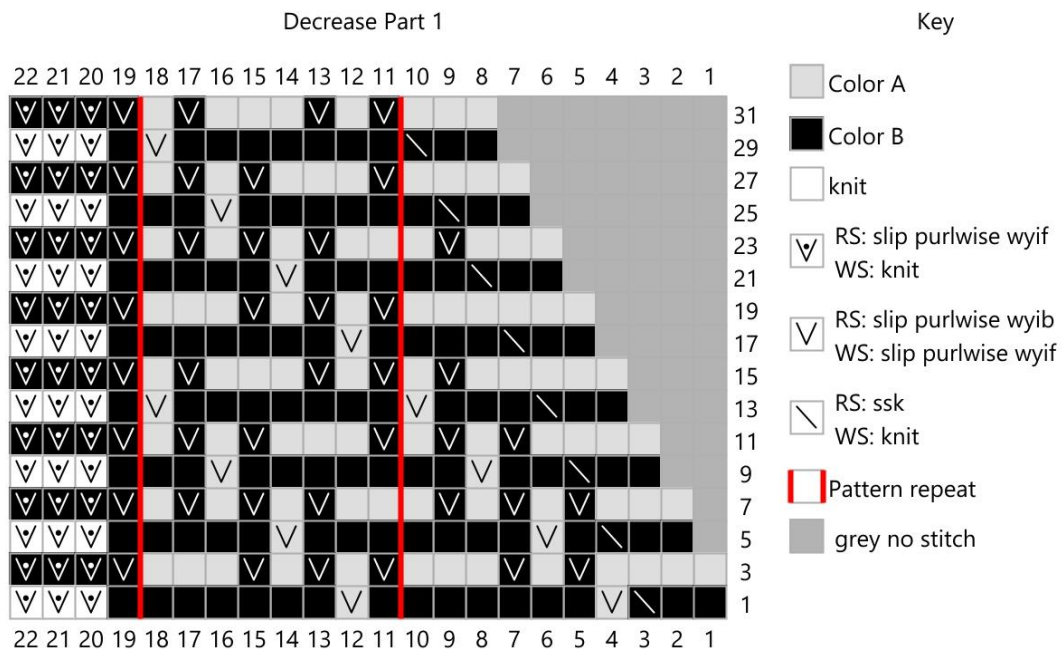
Work the chart nine times then move to Decrease Part 1. (95 sts)



Decrease Part 1

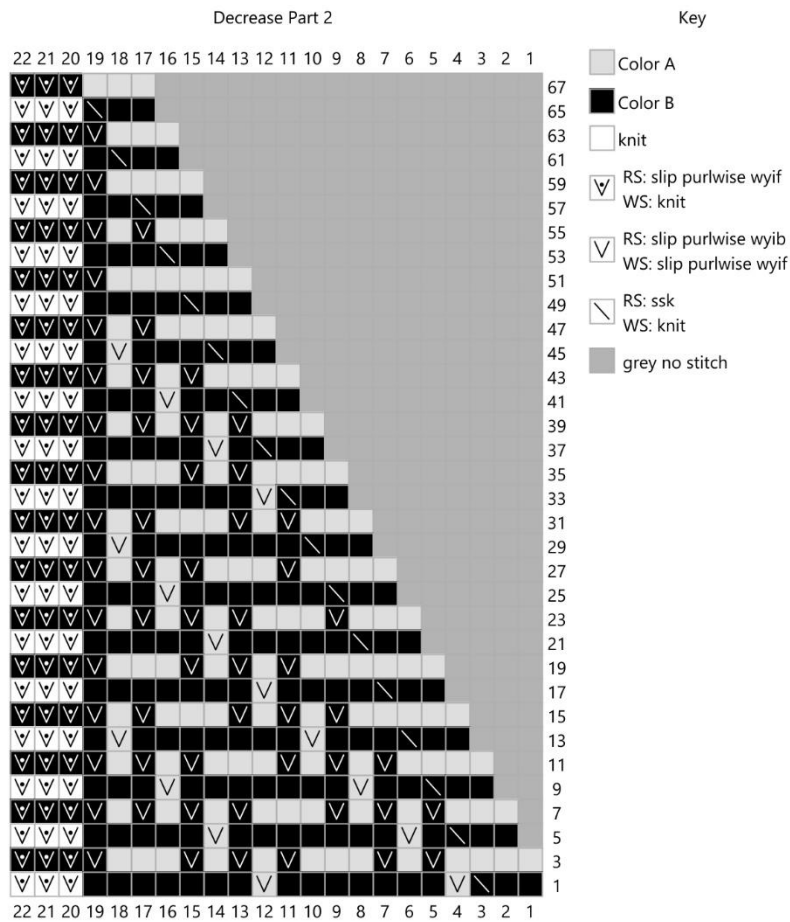
Note: You will need to remove the first edge marker. Going forward, the 3rd I-Cord st on right side rows becomes part of the ssk (decrease). On the wrong side rows you will continue to sl3wyif.

Work the chart nine times then move to Decrease Part 2 (22 sts).



Decrease Part 2

Work the chart once, then move to Final Rows (6 sts).



Final Rows

- Row 1. Using color B – K2, ssk, sl2wyif.
- Row 2. K3, sl2wyif.
- Row 3. Using color A – K2, sl next 3 sts and then k3tog tbl.
- Row 4. K3tog. Cut both colors of yarn and pull through loop.

Weave in all ends and block to dimensions.

Follow [marci_knitdesigner](#) on  to see new releases.