

Mairlynd
get inspired. knit.



Midnight in Berlin

Pattern by Melanie Berg

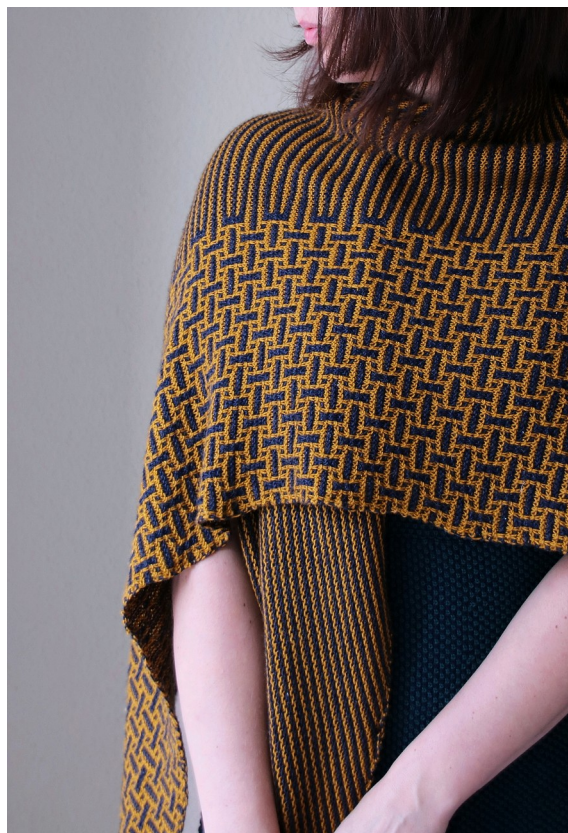
Midnight in Berlin

Pattern by Melanie Berg

As I was walking the streets of Berlin while teaching at the Berlin Knits Festival 2017, I couldn't help but imagine this asymmetrical triangle shawl.

The basketweave mosaic section blends perfectly into garter stitch stripes, with a striking pattern combination reminiscent of Berlin's cobbled pedestrian plazas and neat rows of buildings.

Knitting it with bold colors of Caravan by Crave Yarn (a yummy blend of merino, cashmere and silk) makes it quite the eye-catcher!



Yarn

Crave Yarn Caravan (70% Merino, 10% Silk, 10% Camelid Camel, 10% Cashmere Goat; 100 g / 354 yds [324 m])

- 2 skeins in „Magisterium“ (color A)
188 g / 666 yds [610 m] used for sample
- 2 skeins in „Interstellar“ (color B)
175 g / 620 yds [567 m] used for sample

Needles

- US 4 [3.50 mm] circular needles for the shawl
- US 7 [4.50 mm] double pointed or circular needle for bind-off

or size to obtain gauge

Notions

- 1 stitch marker

Gauge

11 sts x 22 rows = 2 x 2" [5 x 5 cm] in garter stitch, blocked

Finished measurements

88.5" [225 cm] wingspan along top edge and 31.5" [80 cm] deep (see schematic)

Abbreviations

k / p - knit / purl

kfb - k into front and back of st (*1 st increased*)

kfbf - k into front, back and front of st again (*2 sts increased*)

RS / WS - right side / wrong side

sl - slip (always purlwise)

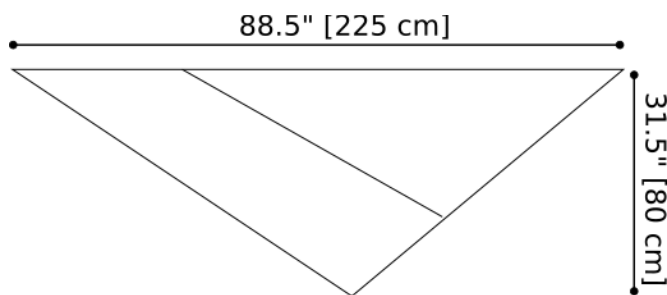
st(s) - stitch(es)

wyib / wyif - with yarn in back / front

Please find links to videos and tutorials for any special techniques used in this pattern [in my Ravelry group](#).

Midnight in Berlin

Pattern by Melanie Berg



Notes

1. Midnight in Berlin is worked flat from left tip to right edge. Stitches are increased every RS row to full width of stitch pattern, then new stitches are incorporated in garter stitch to end of shawl.
2. Please read through the entire pattern to familiarize yourself with its construction before starting to knit.

STITCH DEFINITIONS

Section 1

With color A

Row 1 (RS): k1, [k3, sl 2 wyib, k5] repeat to last st, kfb (1 st increased)

Rows 2, 6, 10 and 14: k all sts that appear in color A, slip the others wyif

With color B

Row 3: k1, [(sl 1 wyib, k1, sl 1 wyib, k2) 2 times] repeat to last 2 sts, sl 1 wyib, kfb (1 st increased)

Rows 4, 8, 12 and 16: k all sts that appear in color B, slip the others wyif

With color A

Row 5: k1, [k8, sl 2 wyib] repeat to last 3 sts, k2, kfb (1 st increased)

With color B

Row 7: k1, [sl 1 wyib, k6, sl 1 wyib, k2] repeat to last 4 sts, sl 1 wyib, k2, kfb (2 sts increased)

With color A

Row 9: k1, [k8, sl 2 wyib] repeat to last 6 sts, k5, kfb (1 st increased)

With color B

Row 11: k1, [(sl 1 wyib, k1, sl 1 wyib, k2) 2 times] repeat to last 7 sts, sl 1 wyib, k1, sl 1 wyib, k2, sl 1 wyib, kfb (1 st increased)



With color A

Row 13: k1, [k3, sl 2 wyib, k5] repeat to last 8 sts, k3, sl 2 wyib, k2, kfb (1 st increased)

With color B

Row 15: k1, [k2, sl 1 wyib, k2, sl 1 wyib, k4] repeat to last 9 sts, k2, sl 1 wyib, k2, sl 1 wyib, k2, kfb (2 sts increased)

Section 2

With color A

Rows 1, 5, 9 and 13 (RS): k1, repeat boxed pattern repeat of corresponding row of chart to marker, slip marker, k to last st, kfb (1 st increased per row)

Rows 2, 6, 10 and 14: k all sts that appear in color A, slip the others wyif

With color B

Rows 3, 7, 11 and 15: k1, repeat boxed pattern repeat of corresponding row of chart to marker, slip marker, k to last st, kfb (1 st increased per row)

Rows 4, 8, 12 and 16: k all sts that appear in color B, slip the others wyif

Midnight in Berlin

Pattern by Melanie Berg

START HERE

Cast-on

With smaller needles and color B, cast on 4 sts using the long-tail cast-on method.

Set-up

With color B

Set-up row (WS): k to end

With color A

Row 1 (RS): k3, kfb (1 st increased – 5 sts)

Rows 2, 6, 10 and 14: k all sts that appear in color A, slip the others wyif

With color B

Row 3: k1, sl 1 wyib, k1, sl 1 wyib, kfb (1 st increased – 6 sts)

Rows 4, 8, 12 and 16: k all sts that appear in color B, slip the others wyif

With color A

Row 5: k5, kfb (1 st increased – 7 sts)

With color B

Row 7: k1, sl 1 wyib, k4, kfb (1 st increased – 8 sts)

With color A

Row 9: k7, kfb (1 st increased – 9 sts)

With color B

Row 11: k1, sl 1 wyib, k1, sl 1 wyib, k2, sl 1 wyib, k1, kfb (1 st increased – 10 sts)

With color A

Row 13: k4, sl 2 wyib, k3, kfb (1 st increased – 11 sts)

With color B

Row 15: k3, sl 1 wyib, k2, sl 1 wyib, k3, kfb (1 st increased – 12 sts)

Begin shawl

Work six repeats of Section 1 (60 sts increased – 72 sts). On the very last WS row of repeat six, place a stitch marker after the first stitch.

Work twenty-seven repeats of Section 2 (216 sts increased – 288 sts)

Work rows 1-12 of Section 2 once (6 sts increased – 294 sts)

Note: Remove stitch marker on the next row.

With color A

Next row (RS): k to last st, kfb (1 st increased – 295 sts)

Next row: k to end

I-Cord bind-off

Cut color B, then switch to larger needles for the bind-off.

With color A

Row 1 (RS): cable cast on 3 sts, sl 3 sts back to left needle, [k2, k 2 sts together through the back loop, sl 3 sts back to left needle] repeat to last 3 sts. Knit 3 sts together through the back loop.

Finishing

Cut yarn and pull through last stitch. Weave in and secure all ends, wash and block to final measurements (see schematic).



Midnight in Berlin

Pattern by Melanie Berg

Charts

Charts are read from bottom to top. Only RS rows are charted - they are read from right to left. In WS rows, k all sts that appear in the same color you're currently working with and slip all others wyif.

Rows 1, 5, 9 and 13 are worked with color A - the colored boxes represent those sts that are knit, the white boxes represent those that are slipped wyib.

Rows 3, 7, 11 and 15 are worked with color B - the white boxes represent those sts that are knit, the colored boxes represent those that are slipped wyib.

Chart for set-up

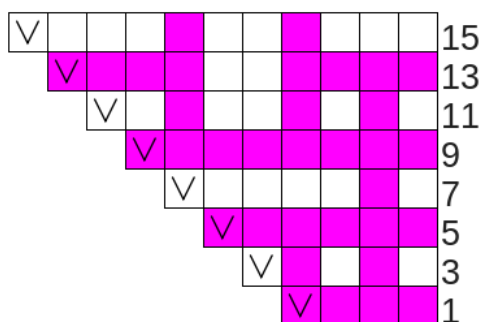
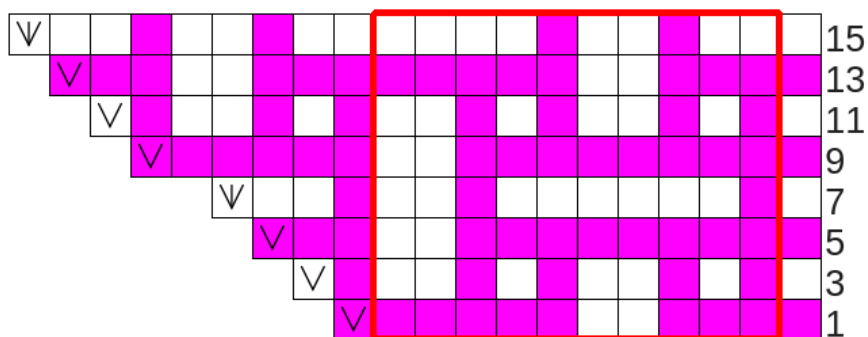


Chart for Section 1 and 2



- ☐ k / sl (see explanation)
- ☐ kfb
- ☐ kfbf