A close-up, back view of a person's head wearing a dark brown knitted hat. The hat features a complex, interlocking geometric pattern in shades of red and orange. The person has long, wavy brown hair. The background is a bright, out-of-focus indoor setting.

Book 15

Time for HATS!

malabrigo



THEY HAVE WARMED US,
PROTECTED US FROM THE SUN,
HELPED US LOOK MORE STYLISH...
Hats of myriad designs have had
multiple uses throughout history. The
pharaohs of ancient Egypt covered
their heads with nemes, head cloths
that may have been the antecedent
of modern-day head gear.

Cold weather is approaching,
and a stash full of beautiful yarn is
waiting to become a new garment.
If you're like us, you'll start your
winter knitting with a hat. Warmth
is a key factor, of course, but you're
a knitter, so color combinations,
stitches, shapes and embellishments
are equally important. (Some say
the pompom was invented by French
sailors to muffle hits to the head
caused by the extreme movements
of boats.)

We've created this book with the
hope that it inspires you to warm
your own head, as well as the heads
of your loved ones. And, of course,
we want you to have an amazing
time knitting! ♦

Knitting mood



Isabel

ELONGATED STITCH HAT

Designed by Alexandra Tinsley

EASY

SIZE

One size fits most

YARN

Rasta by Malabrigo, 5.3oz/150g hanks,
each approx 90yd/82m (merino wool)
• 1 hank in #809 Solis

NEEDLES

- Size 17 (12.75mm) circular needle
16"/40cm long, OR SIZE TO OBTAIN GAUGE
- One set (5) each size 17 (12.75mm) dpn

NOTIONS

- Stitch marker
- Cable needle (cn)

MEASUREMENTS

- Brim circumference 18"/45.5cm
- Depth 10"/25.5cm

GAUGES

- 8 sts and 15 rnds = 4"/10cm over St st
using size 17 (12.75mm) needles.
 - 10 sts and 15 rnds = 4"/10cm over elongated stitch pat
using size 17 (12.75mm) needles.
- TAKE TIME TO CHECK YOUR GAUGES.

STITCH GLOSSARY

DW (DOUBLE WRAP) Knit 1, wrapping yarn twice.
On following round, drop extra wrap.

ERC (ELONGATED RIGHT CROSS) Sl 3 purlwise wyib
(drop extra wrap on 3rd st); sl next st to cn and hold to
front; sl 3 sts back to LH needle, then place st from cn
back on LH needle; k3, sl 1 wyib.

ELC (ELONGATED LEFT CROSS) Sl next st to cn and
hold to *front*; sl 1 st (dropping extra wrap) purlwise, k2,
place st from cn back on LH needle and knit st.

HAT

With circular needle, cast on 44 sts. Join, taking care not
to twist sts, and place marker for beg of rnd.

NEXT RND *K1, p1; rep from * around.
Rep last rnd twice more for k1, p1 rib.

BEG ELONGATED STITCH PAT

SET-UP RND K5, [DW, DW, k9] 3 times, DW, DW, k4.
RND 1 K5, [sl 2 purlwise, k9] 3 times, sl 2 purlwise, k4.
RND 2 K4, [DW, sl 2 purlwise, DW, k7] 3 times, DW,
sl 2 purlwise, DW, k3.
RND 3 K2, [ERC, ELC, k3] 3 times, ERC, ELC, k1.

Rep rnds 1–3 four times more, then rep rnd 1 twice more.

NEXT RND *K2, sl 3 purlwise, sl next st to cn and hold
to *front*. Sl 3 sts back to LH needle, then place st from cn
back on LH needle, k4. Sl next st to cn and hold to *front*,
k3, place st from cn back on LH needle and knit st, k1;
rep from * 3 times more.

CROWN SHAPING

RND 1 Knit.
RND 2 K4, [ssk, k2tog, k7] 3 times, ssk, k2tog, k3—36 sts.
RND 3 Knit.
RND 4 K3, [ssk, k2tog, k5] 3 times, ssk, k2tog, k2—28 sts.
RND 5 Knit.
RND 6 K2, [ssk, k2tog, k3] 3 times, ssk, k2tog, k1—20 sts.
RND 7 Knit.
RND 8 K1, [ssk, k2tog, k1] 3 times, ssk, k2tog—12 sts.
RND 9 Knit.

Cut yarn, leaving a long tail and pull through rem sts.
Draw up and secure.
Block lightly to measurements. ♦



Regina

GEOMETRIC CABLES HAT

Designed by Sara Huntington Burch

EXPERIENCED

SIZE

One size fits all

YARN

Sock by Malabrigo, 3½oz/100g hanks, each approx 440yd/402m (superwash merino wool)

- 1 hank each in #810 Cordovan (MC) and #850 Archangel (CC)

NEEDLES

- One each sizes 2 and 3 (2.75 and 3.25mm) circular needles each 16"/40cm long, OR SIZE TO OBTAIN GAUGE
- One set (5) each size 3 (3.25mm) dpn

NOTIONS

- Stitch markers
- Cable needle (cn)

MEASUREMENTS

- Brim circumference 20"/51cm
- Depth 8"/20.5cm

GAUGES

- 31 sts and 46 rnds = 4"/10cm over St st using larger needles.
 - 40 sts and 44 rnds = 4"/10cm over chart pat using larger needles.
- TAKE TIME TO CHECK YOUR GAUGES.

STITCH GLOSSARY

M1L Insert LH needle from front to back under the strand between last st worked and next st on LH needle. K into the back loop to twist the st.

3-ST RC Sl 1 st to cn and hold to *back*, k2, k1 from cn.

3-ST LC Sl 2 sts to cn and hold to *front*, k1, k2 from cn.

4-ST RC Sl 2 sts to cn and hold to *back*, k2, k2 from cn.

4-ST LC Sl 2 sts to cn and hold to *front*, k2, k2 from cn.

NOTES

1) Carry color not in use loosely behind work so stranding does not pull fabric too tightly.

2) When working chart (see page 7), note that CC sts will 'travel' across MC sts. Use charted sts in next rnd above each cable to check placement of MC and CC stitches following each cable.

3) When cables are worked across beg of rnd, keep marker in center of cable.

HAT

With smaller circular needle and MC, cast on 150 sts. Join, taking care not to twist sts, and place marker for beg of rnd.

RND 1 *K1, p1; rep from * around.

Rep rnd 1 for k1, p1 rib for 1"/2.5cm.

Change to larger circular needle.

INC RND *K3, M1L; rep from * around—200 sts.

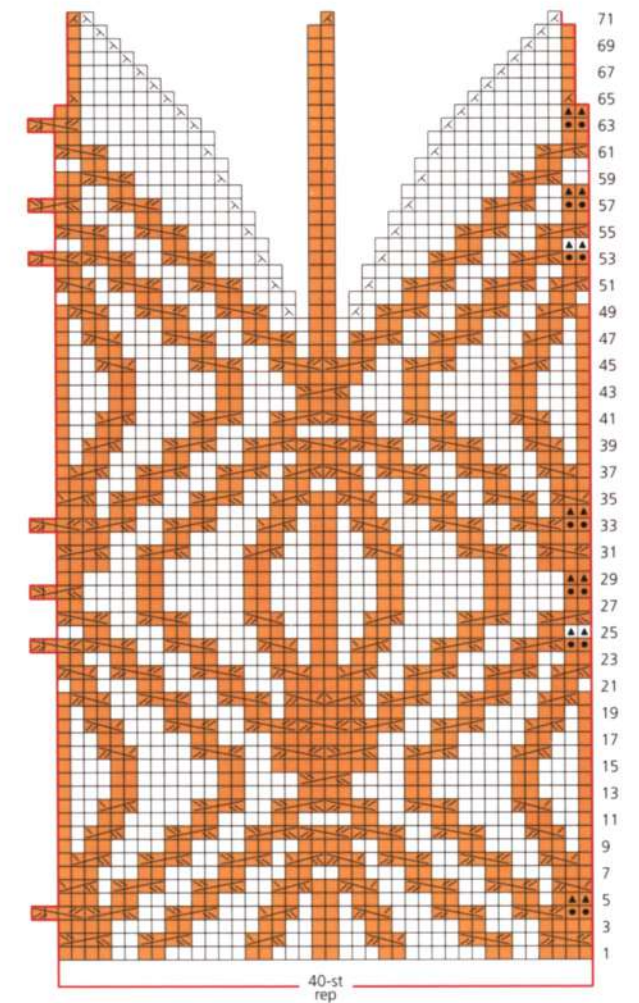
BEG CHART

RND 1 Work 40-st rep 5 times around.

Cont to work chart in this way through rnd 71, changing to dpn when sts no longer fit comfortably on circular needle—20 sts.

Cut yarn and pull through rem sts. Draw up and secure. Block lightly to measurements. ♦





Stitch Key

- | | |
|--|---------|
| Cordovan (MC) | 3-st RC |
| Archangel (CC) | 3-st LC |
| knit | 4-st RC |
| k2tog | 4-st LC |
| ssk | |
| K on first rep only, in subsequent reps work as part of last cable | |
| Skip on first rep only, knit for subsequent reps | |

Neptunia

TRIANGLE INSET HAT

Designed by Cori Schrader

INTERMEDIATE

SIZES

Sized for Small, Medium, Large and shown in size Medium.

YARN

Mechita by Malabrigo, 3½oz/100g hanks, each approx 420yd/384m (superwash merino wool)
• 1 hank in #682 Poipu

NEEDLES

- Size 6 (4 mm) circular needle, 16"/40cm long, OR SIZE TO OBTAIN GAUGE
- One set (5) size 6 (4mm) dpn

NOTIONS

- Stitch marker
- Tapestry needle

MEASUREMENTS

- Brim circumference 16 (17, 18½)"/40.5 (43, 47)cm
- Depth 8½ (9¼, 10)"/21.5 (23.5, 25.5)cm

GAUGES

- 8 sts and 15 rnds = 4"/10cm over St st using size 17 (12.75mm) needles.
 - 10 sts and 15 rnds = 4"/10cm over elongated stitch pat using size 17 (12.75mm) needles.
- TAKE TIME TO CHECK YOUR GAUGES.

STITCH GLOSSARY

M1 Make one by inserting LH needle into the horizontal strand between st just knit and next st and k1tbl into this strand to M1 st.

TWISTED RIB PATTERN

(over an even number of sts)

RND 1 *K1 tbl, p1; rep from * around.
Rep this rnd for twisted rib pattern.

HAT

Beg at the lower edge with circular needle, cast on 100 (106, 112) sts. Join to work in rnds, taking care not to twist sts and pm to mark beg of rnds. Work in twisted rib pattern for 6 rnds.

INC RND K0 (1, 5), work 0 (M1, M1), [K10 (8, 6), M1] 10 (13, 17) times, k0 (1, 5)—110 (120, 130) sts.

BEG TRIANGLE INSET PATTERN

RND 1 K14 (15, 10), pm, p85 (95, 105), pm, k to end.

PATTERN SHIFT RND 2 K to marker, remove marker and k1, then place new marker, purl to the last p st before next marker, place new marker, k this st and remove previous marker, k to end.

There are now 83 (93, 103) purl sts between markers. Rep pattern shift rnd 2 every rnd on the next 41 (46, 51) rnds or until there is 1 purl st remaining between the markers and all rem sts are worked in St st. Remove the markers and complete hat in St st only.





NEXT RND Knit all sts.

Change to dpn evenly divided onto 4 dpn.

CROWN SHAPING

DEC RND 1 [K9 (10, 11), k2tog] 10 times—100 (110, 120) sts.

RND 2 AND ALL EVEN RNDs Knit.

DEC RND 3 [K8 (9, 10), k2tog] 10 times—90 (100, 110) sts.

DEC ROW 5 [K7 (8, 9), k2tog] 10 times—80 (90, 100) sts.

DEC RND 7 [K6 (7, 8), k2tog] 10 times—70 (80, 90) sts.

DEC RND 9 [K5 (6, 7), k2tog] 10 times—60 (70, 80) sts.

DEC RND 11 [K4 (5, 6), k2tpg] 10 times—50 (60, 70) sts.

DEC RND 13 [K3 (4, 5), k2tog] 10 times—40 (50, 60) sts.

DEC RND 15 [K2 (3, 4), k2tog] 10 times—30 (40, 50) sts.

DEC RND 17 [K1 (2, 3), k2tog] 10 times—20 (30, 40) sts.

SIZES MEDIUM (LARGE) ONLY

DEC RND 19 [K1 (2), k2tog] 10 times 20 (30) sts.

SIZE LARGE ONLY

DEC RND 21 [K1, k2tog] 10 times—20 sts.

ALL SIZES

RND 18 (20, 22) Knit 20 sts on all sizes.

Cut yarn leaving a long end.

FINISHING

Pull end through rem sts on dpn, then pull through sts once again and tighten to secure the top. Using tapestry needle, weave in ends on the WS. Lay finished hat on a wet terry-cloth towel; steam lightly with iron on both sides. Leave hat to dry. ♦

Rosario

TASSELED HAT

Designed by Barb Brown

INTERMEDIATE

SIZE

One size fits all

YARN

Sock by Malabrigo, 3½oz/100g hanks, each approx 440yd/402m (superwash merino wool)

- 1 hank each in #131 Sand Bank (MC) and #033 Cereza (CC)

NEEDLES

- Sizes 2 and 3 (2.75 and 3.25mm) circular needles each 24"/60cm long, OR SIZE TO OBTAIN GAUGE
- One set (5) each size 3 (3.25mm) dpn

NOTIONS

- Stitch markers

MEASUREMENTS

- Brim circumference 18"/45.5cm
- Depth 9½"/24cm

GAUGE

32 sts and 38 rnds = 4"/10cm over St st and chart pat using size 3 (3.25mm) needles. TAKE TIME TO CHECK YOUR GAUGE.

NOTES

- 1) Chart is worked in St st (knit every rnd). Read all chart rnds from right to left. See page 15 for chart.
- 2) When changing colors in Latvian braid or chart pat, twist yarns on WS to prevent holes in work.

HAT

With smaller circular needle and CC, cast on 134 sts. Join, taking care not to twist sts, and place marker for beg of rnd.

RNDS 1–5 *K1, p1; rep from * around.

BEG LATVIAN BRAID

RND 6 Join MC, *p1 MC, p1 CC; rep from * around, always stranding the new color from underneath on the RS.

RND 7 *P1 MC, p1 CC; rep from * around, always stranding the new color over from the top. Cut MC.

RND 8 Knit with CC.

RNDS 9–20 Rep rnd 1.

RND 21 Change to larger needle and with CC knit 1 rnd, inc 10 sts evenly spaced around—144 sts. Join MC.

BEG CHART PAT

RND 1 Work 18-st rep of chart 8 times.

Cont in pat as established through rnd 71, changing to dpns when there are not enough sts to fit comfortably on circular needle. There are 16 sts after rnd 71.

Cut yarn, leaving a long tail and pull through rem sts. Draw up and secure.

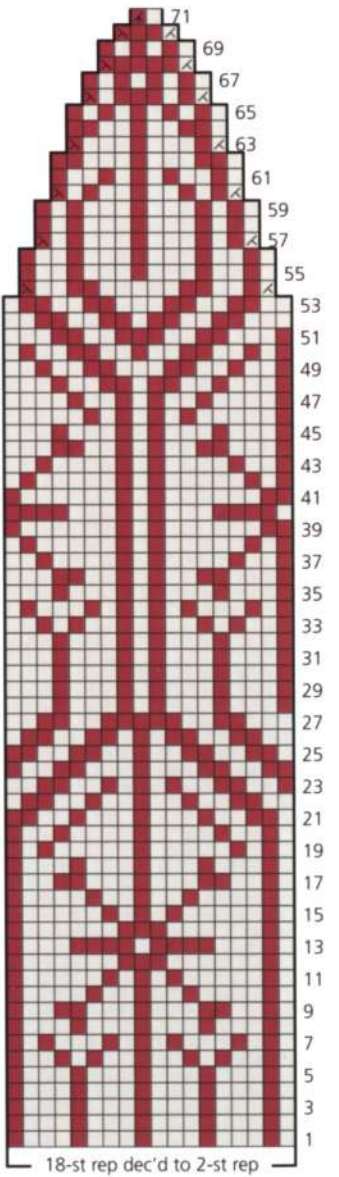
TASSEL

Cut a piece of cardboard approx 4½"/11.5cm long by 3"/7.5cm wide. Using 2 strands of yarn (one of CC, one of MC) wrap around and around the longer length until the tassel is desired thickness. Remove cardboard, being careful to hold all the strands. Wrap 2 strands several times around the folded strands approx ½"/2.5cm from the top. Make a knot in the wound yarn to secure and thread yarn into the tassel. Trim the ends.

TIE

Cut 3 strands of each color approx 16"/40cm long. Using a tapestry needle, pull all 6 strands through the top of the tassel and ties ends in a knot to secure. Arrange strands so they all are the same length. Braid the strands using 2 CC, 2 MC and 1 CC/1 MC. Make a knot in the yarn when braid is approx 4"/10cm long. Thread ends through top of hat and secure inside. Block lightly to measurements. ♦





Color & Stitch Key

- | | |
|---|---|
| Sand Bank (MC) | ssk |
| Cereza (CC) | k3tog |
| k2tog | |

Lucía

STRANDED STITCH HAT

Designed by Cheryl Murray

INTERMEDIATE

SIZE

One size fits most.

YARN

Rios by Malabrigo, 3½oz/100g hanks,
each approx 210 yd/192 m (superwash merino wool)
• 1 hank in #695 Peachy

NEEDLES

• Size 8 (5 mm) circular needle, 16"/40cm long
OR SIZE TO OBTAIN GAUGE
• One set (5) size 8 (5 mm) dpn

NOTIONS

• Stitch marker
• Tapestry needle

MEASUREMENTS

• Brim circumference 19½"/49.5cm
• Depth 10"/25.5cm

GAUGE

18 sts and 36 rnds = 4"/10cm over stranded slip stitch
pattern worked in rnds using size 8 (5mm) needle.
TAKE TIME TO CHECK YOUR GAUGE.

GARTER STITCH

(worked in rnds)

*Knit 1 rnd, purl 1 rnd; rep from * for garter st
in the round.

STRANDED SLIPPED STITCH PATTERN

(multiple of 10 sts)

RND 1 *Sl 5 sts purlwise wyif, p5; rep from * around.

RND 2 Knit.

RND 3 *K2, with RH needle pick up the strand from
2 rnds below and k this strand tog with the next st on
needle, then k2, p5; rep from * around.

RND 4 Knit.

Rep these 4 rnds for stranded slip stitch pattern.



HAT

Beg at the lower edge with circular needle,
cast on 88 sts. Join to work in rnds, taking care not to
twist sts on needle and pm to mark beg of rnds.

RND 1 Knit.

RND 2 Purl.

Rep these 2 rnds for garter st worked in rnds until piece
measures 2½"/6.5cm from beg.

NEXT (INC) RND K22, M1, k44, M1, k22—90 sts.

BEG PATTERN STITCH

Work the 4-rnd stranded slip stitch pattern for 12 reps,
then work rnd 1 once more.

Piece measures approx 8"/20.5cm from beg.



CROWN SHAPING

NOTE When decreasing sts to shape the crown, change to dpns when there are too few sts to fit comfortably on the circular needle.

DEC RND 1 [K8, k2tog] 9 times—81 sts.

RND 2 *K2, with RH needle, pick up the strand from 2 rnds below and k this strand tog with the next st on needle, then k2, p4; rep from * around.

DEC RND 3 [K7, k2tog] 9 times—72 sts.

RND 4 *Wyif sl 5 sts, p3; rep from * around.

DEC RND 5 [K6, k2tog] 9 times—63 sts.

RND 6 Purl.

DEC RND 7 [K5, k2tog] 9 times—54 sts.

RND 8 Purl.

DEC RND 9 [K4, k2tog] 9 times—45 sts.

RND 10 Purl.

DEC RND 11 [K3, k2tog] 9 times—36 sts.

RND 12 Purl.

DEC RND 13 [K2, k2tog] 9 times—27 sts.

RND 14 Purl.

DEC RND 15 [K1, k2tog] 9 times—18 sts.

RND 16 Purl.

DEC RND 17 (K2tog) 9 times—9 sts.

Cut yarn leaving a long end.

FINISHING

Pull end through rem sts on dpn, then pull through sts once again and tighten to secure the top. Using tapestry needle, weave in ends on the WS. Lay finished hat on a wet terry cloth towel; steam lightly with iron on both sides. Leave hat to dry. ♦



Sarandí

SLIP-STITCH HAT

Designed by Yoko Hatta

INTERMEDIATE

SIZES

Sized for Small/Medium (Large/X-Large)
and shown in size Small/Medium.

YARN

Mecha by Malabrigo, 3½oz/100g hanks,
each approx 130yd/119m (superwash merino wool)
• 1 hank each in #866 Arco Iris (MC) and #051 VAA (CC)

NEEDLES

• One set (5) sizes 8 and 10½ (5 and 6.5mm)
double-pointed needles (dpn) OR SIZE TO OBTAIN GAUGE

NOTIONS

• Stitch marker

MEASUREMENTS

• Brim circumference approx 18 (20)"/46 (51)cm
• Depth 8"/20.5cm

GAUGE

16 sts and 24 rnds = 4"/10cm over brick pat
using larger needles.
TAKE TIME TO CHECK YOUR GAUGE.

BRICK PATTERN

(multiple of 4 sts)

RNDS 1 AND 2 With MC, knit.

RNDS 3–6 With CC, *k3, sl 1 wyib; rep from * around.

RNDS 7 AND 8 With MC, knit.

RNDS 9–12 With CC, *k1, sl 1 wyib, k2;
rep from * around.

Rep rnds 1–12 for brick pat.

HAT

With smaller dpn and MC, cast on 72 (80) sts. Join, taking
care not to twist sts, and place marker for beg of rnd.

RND 1 *K2, p2; rep from * around.

Rep rnd 1 for k2, p2 rib for 1"/2.5cm.

Change to larger dpn.

Work rnds 1–10 of brick pat 3 times, then rnds 1–7 once
more (37 rnds in total).

DEC RND With MC, [k3tog, k1] 18 (20) times—36 (40) sts.

Work rnds 9–12 of brick pat.

With CC knit 1 rnd.

DEC RND [K2tog] 18 (20) times—18 (20) sts. Cut yarn,
draw through rem sts, pull tightly and secure end.

POMPOM

Using MC and CC, make a 2"/5cm pompom and
attach to top of hat. ♦



Estrella

TWO-TONE HAT

Designed by Audrey Drysdale

INTERMEDIATE

SIZE

One size fits most

YARN

Mecha by Malabrigo, 3½oz/100g hanks,
each approx 130yd/119m (superwash merino wool)
• 1 hank each in #31 Mostaza (A) and #63 Natural (B)

NEEDLES

• One pair each sizes 9 and 10 (5.5 and 6mm) needles
OR SIZE TO OBTAIN GAUGE

NOTIONS

• One 3½-inch/9cm diameter pompom maker
• Tapestry needle
• Bobbins (optional)

MEASUREMENTS

• Brim circumference 19"/48cm
• Depth 8½"/21.5cm

GAUGE

15 sts and 22 rows = 4"/10cm over St st
using larger needles.
TAKE TIME TO CHECK YOUR GAUGE.

STITCH GLOSSARY

K1TBL K1 through back loop

P1TBL P1 through back loop

NOTES

1) Work back and forth in rows in St st for the lower edge to the top, then sew the back seam to complete the hat.
2) Wind yarn into small "butterflies" or onto separate bobbins for each segment of color foll the color chart. Then, using the intarsia method of changing colors, twist yarns tog at each color change to avoid holes in work.



HAT

Beg at the lower edge with smaller needles and A,
cast on 71 sts.

ROW 1 (RS) *K1tbl, p1; rep from *, end k1tbl.

ROW 2 (WS) *P1tbl, k1; rep from *, end p1tbl.

Rep the last 2 rows for twisted k1, p1 rib for
1¾"/4.5cm.

Change to larger needles.

Cont in St st (k on RS, p on WS) until piece measures
4½"/11.5cm from beg.



BEG CHART

ROW 1 (RS) Work st 1, then work the 10-st rep of chart 7 times.

ROWS 2–16 Work foll chart—57 sts.
Cut A and cont with B only.

CROWN SHAPING

DEC ROW 1 (RS) [K2tog, k5] 8 times, end k1—49 sts.

ROW 2 AND ALL WS ROWS Purl.

DEC ROW 3 [K2tog, k4] 8 times, end k1—41 sts.

DEC ROW 5 [K2tog, k3] 8 times, end k1—33 sts.

DEC ROW 7 [K2tog, k2] 8 times, end k1—25 sts.

DEC ROW 9 [K2tog, k1] 8 times, end k1—17 sts.

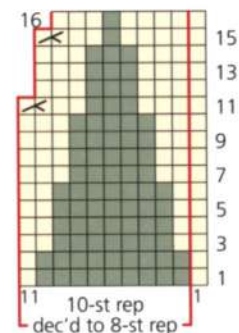
DEC ROW 11 (K2tog) 8 times, end k1—9 sts.

Cut yarn leaving a long end.

FINISHING

Pull end through rem sts on needle, then pull through sts once again and tighten to secure the top. Sew back seam. Using tapestry needle, weave in ends on the WS. Lay finished hat on a wet terry cloth towel; steam lightly with iron on both sides. Leave to dry.

Use the pompom maker to make a pompom with B yarn and sew to top of finished hat. ♦



Color / Stitch Key

■ Mostaza (A)

■ Natural (B)

⚡ k2tog on RS, p2tog on WS



Mariscala

MOSAIC HAT

Designed by Cori Schrader

INTERMEDIATE

SIZE

One size fits all

YARN

Arroyo by Malabrigo, 3½oz/100g hanks,
each approx 335yd/306m (superwash merino wool)
• 1 hank each in #96 Sunset (MC) and #36 Pearl (CC)

NEEDLES

• One each sizes 4 and 6 (3.5 and 4mm) circular needles
each 16"/40cm long, OR SIZE TO OBTAIN GAUGE
• One set (5) each size 6 (4mm) dpn

NOTIONS

• Stitch markers

MEASUREMENTS

• Brim circumference 18"/45.5cm
• Depth 8"/20.5cm

GAUGE

25 sts and 56 rnds = 4"/10cm over mosaic pat
using size 6 (4mm) needles.

TAKE TIME TO CHECK YOUR GAUGE.

NOTES

- 1) One row of chart represents two rounds of knitting. Read all rnds from right to left. Only one color is worked over 2 rnds, slipping opposite color.
- 2) Chart is worked in garter stitch, knit the odd-numbered rounds and purl the even numbered rounds. The letters at the RH side of the chart represent the color for each round. The other color will be slipped on those 2 rounds. See page 29 for chart.
- 3) Slip all sts wyib.



HAT

With smaller circular needle and MC, cast on 104 sts. Join, taking care not to twist sts, and place marker (pm) for beg of rnd.

RND 1 *K1, p1; rep from * around.

Rep rnd 1 for k1, p1 rib for 9 rnds more.

Change to larger circular needle.

INC RND [P13, M1, pm] 8 times—112 sts (last marker is beg of rnd marker).

BEG CHART PAT

RND 1 With CC, *sl 1, k5, sl 1, k5, sl 1, k1, sl marker; rep from * around.

RND 2 With CC, *sl 1, p5, sl 1, p5, sl 1, p1, sl marker; rep from * around.

RND 3 With MC, *k3, [sl 1, k1] 3 times, sl 1, k3, sl 1, sl marker; rep from * around.

RND 4 With MC, *p3, [sl 1, p1] 3 times, sl 1, p3, sl 1, sl marker; rep from * around.

Cont to work chart in this way through rnd 68—80 sts.





CROWN SHAPING

Note Change to dpn when sts no longer fit comfortably on circular needle.

DEC RND With CC, *ssk, k to 2 sts before marker, k2tog; rep from * around—16 sts dec'd.

NEXT RND With CC, purl.

NEXT RND With MC, knit.

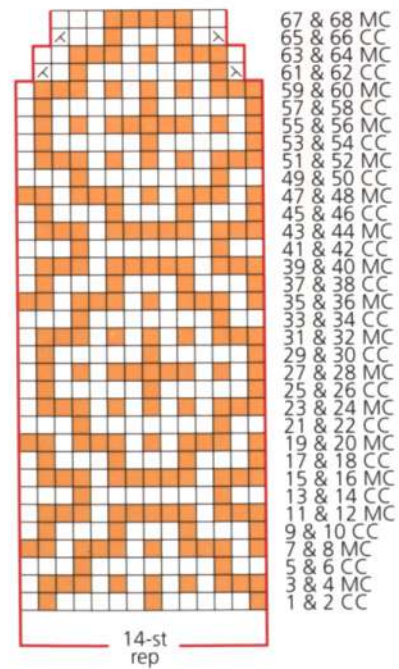
NEXT RND With MC, purl.

Rep last 4 rnds 3 times more—16 sts.

NEXT RND With CC, *k2tog; rep from * around—8 sts.

Cut yarn and pull through rem sts. Draw up and secure.

Block lightly to measurements. ♦



Stitch Key

- Sunset (MC)
- Pearl (CC)
- ⊗ k2tog
- ⊘ ssk

Carlos

HERRINGBONE HAT

Designed by Gabriella Calderini

EXPERIENCED

SIZE

One size fits all

YARN

Rios by Malabrigo, 3½oz/100g hanks,
each approx 210yd/192m (superwash merino wool)

- 1 hank in #684 Camleón

NEEDLES

- Sizes 6 and 10½ (4 and 6.5mm) circular needles
each 16"/40cm long, OR SIZE TO OBTAIN GAUGE
- One set (5) size 6 (4mm) double-pointed needles (dpn)

NOTIONS

- Stitch markers
- Scrap yarn and crochet hook for provisional cast on

MEASUREMENTS

- Brim circumference approx 18"/46cm, unstretched
- Depth 8½"/21.5cm

GAUGES

- 16 sts and 20 rows = 4"/10cm over St St
using size 10½ (6.5mm) needle.
- 21 sts and 26 rows = 4"/10 cm over St St
using size 6 (4mm) needles.

TAKE TIME TO CHECK YOUR GAUGES.

PROVISIONAL CAST ON

Using scrap yarn and crochet hook, ch the number of sts to cast on plus a few extra. Cut a tail and pull the tail through the last chain. With knitting needle and yarn, pick up and knit the stated number of sts through the "purl bumps" on the back of the chain. To remove scrap yarn chain, when instructed, pull out the tail from the last crochet stitch. Gently and slowly pull on the tail to unravel the crochet stitches, carefully placing each released knit stitch on a needle.

BAND

With size 6 (4mm) circular needle and scrap yarn cast on 12 sts using Provisional Cast On method.

SET-UP ROW Join the working yarn, leaving a 12"/30cm long tail, k12.

Note Slip the first st purlwise and knit the last stitch on every row to create a clean edge.

ROW 1 (WS) Sl 1, k11.

ROW 2 (RS) Sl 1, p10, k1

ROW 3 (WS) Sl 1, p10, k1

ROW 4 (RS) Sl 1, k11.

Rep these 4 rows 39 times more and then Rows 1 and 2 once more.

Do not cut yarn, it will be used later to pick up sts along the edge of the band.

Unravel the cast-on edge and place live sts onto size 6 (4mm) dpn.

Using the 12"/30cm tail, graft the live sts of the borders using Kitchener stitch.

With WS facing and size 6 (4mm) circular needle, pick up and knit 80 sts along the slip stitch edge of the band.

Note Picking up sts along the WS will create a raised slip stitch ridge on the RS of the band.

Do *not* join to knit in the round, turn work.

INCREASE ROW Kfb in each st—160 sts.

Place marker and join to work in the round.

Change to size 10½ (6.5mm) circular needle.

HERRINGBONE PATTERN IN ROUNDS

RND 1 *K2tog tbl, slipping only the first st off the needle*; rep from * to * to marker, slip the first st from LH needle to RH needle, remove marker, return the st to LH needle and place marker on the RH needle.

Twist the first st on LH needle (front to back).

RND 2 *K2tog, slipping only the first st off the needle*; rep from * to * to marker, slip the first stitch from LH needle to RH needle, remove marker, return the st to LH needle and place marker on the RH needle.

Twist the first st on LH needle (back to front).

Rep these 2 rnds for herringbone pat in rounds 10 times more.





CROWN SHAPING

RND 1 AND ALL ODD RNDs Work even in rnd 1 of herringbone pat.

ROW 2 (DEC) Work 2 sts in pat, [k3tog slipping 2 sts off the needle (1 st dec'd), work 8 sts in pat] 15 times, k3tog slipping 2 sts off the needle, work 6 sts in pat, slip the first stitch to RH needle, remove marker, return the stitch to LH needle and place the marker on the RH needle. Twist the first st on LH needle—144 sts.

Note The end of rnd instructions for replacing marker will not be mentioned in the foll instructions.

RND 4 (DEC) Work 2 sts in pat, [k3tog slipping 2 sts off the needle, work 7 sts in pat] 15 times, k3tog slipping 2 sts off the needle, work 5 sts in pat—128 sts.

RND 6 (DEC) Work 2 sts in pat, [k3tog, slipping 2 sts off the needle, work 6 sts in pat] 15 times, k3tog slipping 2 sts off the needle, work 4 sts in pat—112 sts.

RND 8 (DEC) Work 2 sts in pat, [k3tog, slipping 2 sts off the needle, work 5 sts in pat] 15 times, k3tog slipping 2 sts off the needle, work 3 sts in pat—96 sts.

RND 10 Work 2 sts in pat, [k3tog, slipping 2 sts off the needle, work 4 sts in pat] 15 times, k3tog slipping 2 sts off the needle, work 2 sts in pat—80 sts.

RND 12 Work 2 sts in pat, [k3tog, slipping 2 sts off the needle, work 3 sts in pat] 15 times, k3tog slipping 2 sts off the needle, work 1 st in pat—64 sts.

RND 14 Work 2 sts in pat, [k3tog, slipping 2 sts off the needle, work 2 sts in pat] 15 times, k3tog, slipping 2 sts off the needle—48 sts.

RND 16 Work 2 sts in pat, [k3tog, slipping 2 sts off the needle, work 1 st in pat] 15 times, work 1 st in pat—33 sts.

RND 18 *K3tog slipping 2 sts off the needle; rep from * around.

Cut the yarn and pull through rem sts, draw up and secure. ♦



Jacinta

WOVEN HAT

Designed by Alexandra Davidoff

INTERMEDIATE

SIZE

One size fits all

YARN

Mechita by Malabrigo, 3½oz/100g hanks,
each approx 420yd/384m (superwash merino wool)

- 1 hank in #895 Dried Orange

NEEDLES

- One each sizes 2 and 5 (2.75 and 3.75mm) circular needles each 16"/40cm long, OR SIZE TO OBTAIN GAUGE
- One set (5) each size 5 (3.75mm) dpn

NOTIONS

- Stitch markers
- Cable needle (cn)

MEASUREMENTS

- Brim circumference approx 18"/46cm
- Depth 9"/23cm

GAUGES

- 27 sts and 37 rnds = 4"/10cm over St st using larger needles.
 - 42 sts and 40 rnds = 4"/10cm over woven pattern st using larger needles.
- TAKE TIME TO CHECK YOUR GAUGES.

STITCH GLOSSARY

4-ST RC Sl 2 sts to cn and hold to *back*, k2, k2 from cn.

4-ST LC Sl 2 sts to cn and hold to *front*, k2, k2 from cn.

6-ST RC Sl 3 sts to cn and hold to *back*, k3, k3 from cn.

6-ST LC Sl 3 sts to cn and hold to *front*, k3, k3 from cn.

8-ST RC Sl 4 sts to cn and hold to *back*, k4, k4 from cn.

8-ST LC Sl 4 sts to cn and hold to *front*, k4, k4 from cn.



HAT

BEG WOVEN PATTERN

RND 1 *8-st LC; rep from * around.

RNDS 2 AND 3 Knit.

RND 4 Knit to end of rnd, remove beg of rnd marker, sl 4 sts to RH needle, replace beg of rnd marker.

RND 5 *8-st RC; rep from * around.

RNDS 6 AND 7 Knit.

RND 8 K to last 4 sts, sl next 4 sts to RH needle, remove beg of rnd marker, sl last 4 sts back to LH needle, replace beg of rnd marker.

Rep rnds 1–8 for woven pattern 4 times more, then rep rnds 1–5 once more.





CROWN SHAPING

Note Change to dpn when sts no longer fit comfortably on circular needle.

RND 1 (DEC) *K3, ssk, k3; rep from * around—168 sts.

RND 2 (DEC) *K2, ssk, k3; rep from * around—144 sts.

RND 3 K to last 3 sts, sl next 3 sts to RH needle, remove beg of rnd marker, sl last 3 sts back to LH needle, replace beg of rnd marker.

RND 4 *6-st LC; rep from * around.

RND 5 Knit.

RND 6 Knit to end of rnd, remove beg of rnd marker, sl 3 sts to RH needle, replace beg of rnd marker.

RND 7 *6-st RC; rep from * around.

RND 8 Knit.

RNDS 9–13 Rep rnds 3–7.

RND 14 (DEC) *K2, ssk, k2; rep from * around—120 sts.

RND 15 (DEC) *K1, ssk, k2; rep from * around—96 sts. Remove beg of rnd marker, sl next 2 sts to RH needle, replace beg of rnd marker.

RND 16 *4-st LC; rep from * around.

RND 17 Knit to end of rnd, remove beg of rnd marker, sl next 2 sts to RH needle, replace beg of rnd marker.

RND 18 *4-st RC; rep from * around.

RND 19 K to last 2 sts, sl next 2 sts to RH needle, remove beg of rnd marker, sl last 2 sts back to LH needle, replace beg of rnd marker.

RND 20 *4-st LC; rep from * around.

RND 21 (DEC) *K1, ssk, k1; rep from * around—72 sts.

RND 22 Knit.

RND 23 (DEC) *Ssk, k1; rep from * around—48 sts.

RND 24 (DEC) *Ssk; rep from * around—24 sts.

Cut yarn and pull through rem sts. Draw up and secure. Block crown lightly to measurements, do not block rib. ♦

Cardona

LATTICE HAT

Designed by Alexandra Davidoff

INTERMEDIATE

SIZE

One size fits all.

YARN

Rios by Malabrigo, 3½oz/100g hanks,
each approx 210yd/192m (superwash merino wool)

- 1 hank in #416 Indiecita

NEEDLES

- One each sizes 5 and 7 (3.75 and 4.5mm) circular needles each 16"/40cm long, OR SIZE TO OBTAIN GAUGE
- One set (5) size 7 (4.5mm) dpn

NOTIONS

- Stitch markers
- Cable needle (cn)

MEASUREMENTS

- Brim circumference 17"/43cm
- Depth 12"/30.5cm

GAUGES

- 21 sts and 29 rnds = 4"/10cm over St st using larger needles.
- 24 sts and 32 rnds = 4"/10cm over chart pat using larger needles.

TAKE TIME TO CHECK YOUR GAUGES.

STITCH GLOSSARY

2-ST RC Sl 1 st to cn, hold to *back*, k1, k1 from cn.

2-ST LC Sl 1 st to cn, hold to *front*, k1, k1 from cn.

2-ST RPC Sl 1 st to cn, hold to *back*, k1, p1 from cn.

2-ST LPC Sl 1 st to cn, hold to *front*, p1, k1 from cn.

NOTE

Lattice pattern may be worked from chart or text.
See page 41 for chart.

HAT

With smaller circular needle, cast on 96 sts. Join, taking care not to twist sts, and place marker (pm) for beg of rnd.

RND 1 *K1, p6, k1; rep from * around.

Rep rnd 1 for ribbing for 2"/5cm.

Change to larger circular needle.

BEG LATTICE PAT

RND 1 *2-st LPC, p4, 2-st RC, 2-st LC, p4, 2-st RPC; rep from * around.

RND 2 *K2, p4, k2; rep from * around.

RND 3 *P1, 2-st LPC, p2, 2-st RC, k2, 2-st LC, p2, 2-st RPC, p1; rep from * around.

RND 4 *K3, p2, k3; rep from * around.

RND 5 *P2, 2-st LPC, 2-st RC, k4, 2-st LC, 2-st RPC, p2; rep from * around.

RND 6 Knit.

RND 7 *P3, 2-st RC, k6, 2-st RC, p3; rep from * around.

RND 8 Knit.

RND 9 *P2, 2-st RPC, 2-st LPC, k4, 2-st RPC, 2-st LPC, p2; rep from * around.

RND 10 *K3, p2, k6, p2, k3; rep from * around.

RND 11 *P1, 2-st RPC, p2, 2-st LPC, k2, 2-st RPC, p2, 2-st LPC, p1; rep from * around.

RND 12 *K2, p4, k2; rep from * around.

RND 13 *2-st RPC, p4, 2-st LPC; rep from * around.

RND 14 *K1, p6, k2, p6, k1; rep from * around.

RND 15 Remove beg of rnd marker, sl next st to RH needle, replace beg of rnd marker, *p6, 2-st LC; rep from * around.

RND 16 *P6, k2; rep from * to last 8 sts, p6, k1, sl next to RH needle, remove beg of rnd marker, sl last st back to LH needle, replace beg of rnd marker.

RND 17 *2-st LC, p4, 2-st RPC, 2-st LPC, p4, 2-st RC; rep from * around.

RND 18 *K2, p4, k2; rep from * around.

RND 19 *K1, 2-st LC, p2, 2-st RPC, p2, 2-st LPC, p2, 2-st RC, k1; rep from * around.

RND 20 *K3, p2, k3; rep from * around.

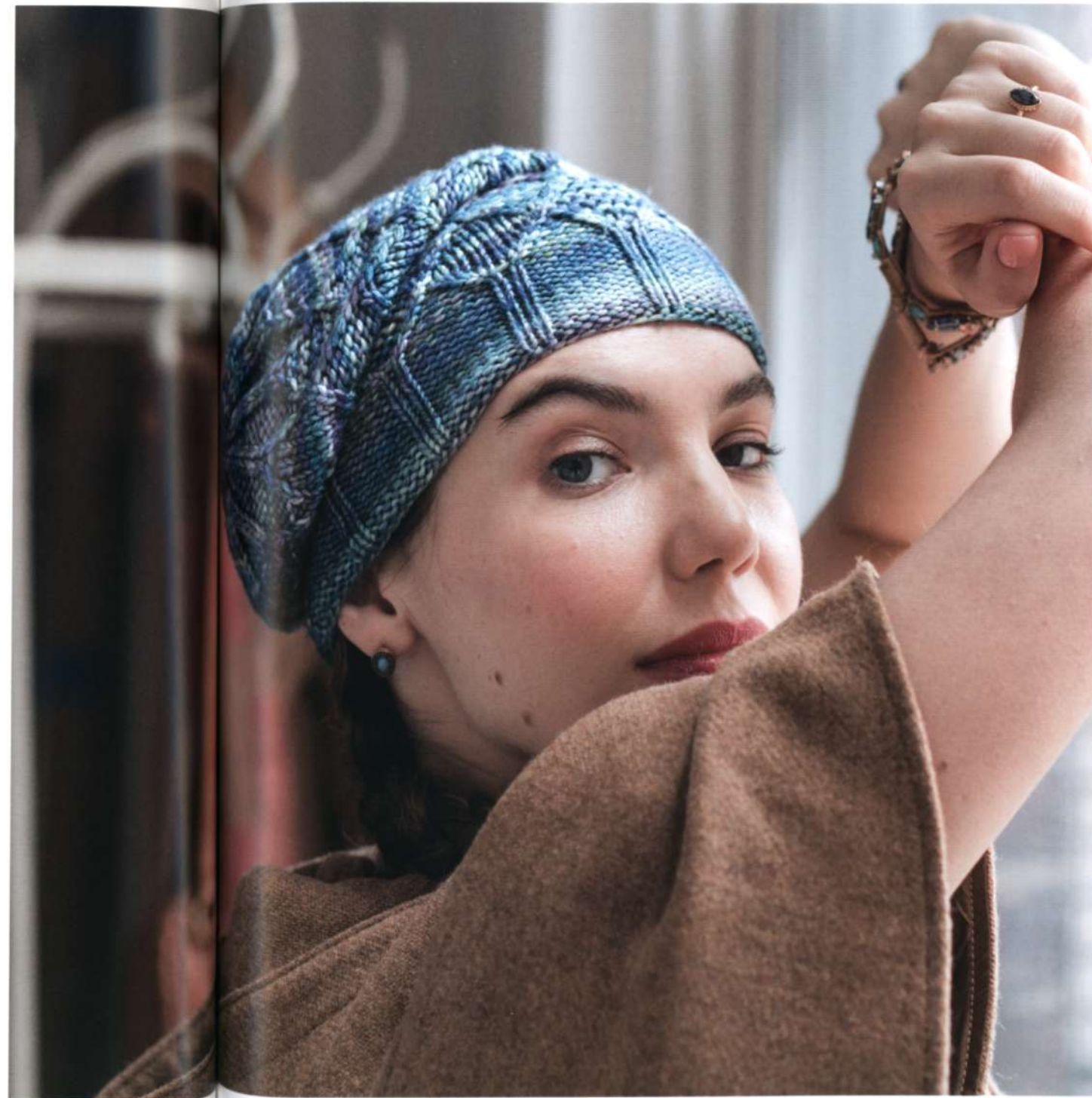
RND 21 *K2, 2-st LC, 2-st RPC, p4, 2-st LPC, 2-st RC, k2; rep from * around.

RND 22 Knit.

RND 23 *K3, 2-st RC, p6, 2-st RC, k3; rep from * around.

RND 24 Knit.





RND 25 *K2, 2-st RPC, 2-st LPC, p4, 2-st RPC, 2-st LPC, k2; rep from * around.

RND 26 *K3, p2, k3; rep from * around.

RND 27 *K1, 2-st RPC, p2, 2-st LPC, p2, 2-st RPC, p2, 2-st LPC, k1; rep from * around.

RND 28 *K2, p4, k2; rep from * around.

RND 29 *2-st RPC, p4, 2-st LPC; rep from * around.

RND 30 *K1, p6, k1; rep from * around.

RND 31 Rep rnd 15.

RND 32 Rep rnd 16.

CROWN SHAPING

Note Change to dpn when sts no longer fit comfortably on circular needle.

DEC RND 1 [Ssk, p4, k2tog] 12 times—72 sts.

NEXT 5 RNDs [K1, p4, k1] 12 times.

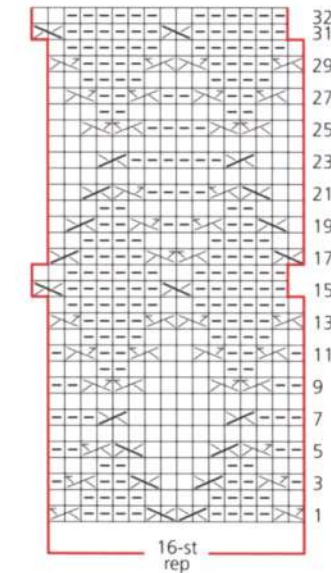
DEC RND 2 [Ssk, p2, k2tog] 12 times—48 sts.

NEXT 3 RNDs [K1, p2, k1] 12 times.

DEC RND 3 [Ssk, k2tog] 12 times—24 sts.

DEC RND 4 [Ssk] 12 times—12 sts.

Cut yarn and pull through rem sts. Draw up and secure. Block lightly to measurements. ♦



Stitch Key

- knit
- ◻ purl
- ⊠ 2-st RC
- ⊡ 2-st LC
- ⊞ 2-st RPC
- ⊟ 2-st LPC

Carmela

CABLE RIB BEANIE

Designed by Jennifer Shiels Toland

INTERMEDIATE

SIZE

One size fits most.

YARN

Mechita by Malabrigo, 3½oz/100g hanks, each approx 420yd/384m (superwash merino wool)

- 1 hank in #680 Aureo

NEEDLES

- One each sizes 3 and 4 (3.25 and 3.5mm) circular needle, each 16"/40cm long, OR SIZE TO OBTAIN GAUGE
- One set (5) size 4 (3.5mm) dpn

NOTIONS

- Stitch markers
- Cable needle (cn)
- Tapestry needle

MEASUREMENTS

- Brim circumference approx 18½"/47cm
- Depth 8¼"/21cm

GAUGES

- 27 sts and 37 rnds = 4"/10cm over St st using larger needle.
- 42 sts and 40 rnds = 4"/10cm over cable pattern using larger needle.

TAKE TIME TO CHECK YOUR GAUGES.

STITCH GLOSSARY

8-ST RC Sl 4 sts to cn and hold to *back*, k2, p2, then (k2, p2) from cn.

8-ST LC Sl 4 sts to cn and hold to *front*, p2, k2, then (p2, k2) from cn.

16-ST RC Sl 8 sts to cn and hold to *back*, [k2, p2] twice, then [k2, p2] twice from cn.

16-ST LC Sl 8 sts to cn and hold to *front*, [p2, k2] twice, then [p2, k2] twice from cn.

CABLE PATTERN STITCH

(over a multiple of 52 sts)

RND 1 *P2, k2; rep from * around.

RNDS 2–11 Rep rnd 1.

CABLE RND 12 *8-St LC, p2, 8-st RC, [k2, p2] 8 times, k2*; rep between * 3 times more.

RND 13 Rep rnd 1.

CABLE RND 14 *[P2, k2] 4 times, p2, 16-st RC, k2, 16-st LC*; rep between *'s 3 times more.

RNDS 15–23 Rep rnd 1.

RND 24 Rep cable rnd 12.

Rep rnds 1–24 for cable pat st.

HAT

Beg at the lower edge with smaller circular needle, cast on 208 sts. Join, taking care not to twist sts and pm to mark beg of rnd.

RNDS 1–11 *P2, k2; rep from * around.

Change to larger circular needle.

BEG CABLE PAT

Beg with cable rnd 12, work in cable pat through rnd 24, then work rnds 1–24 once more, then rnds 1–13 once more. Piece measures approx 6½"/16.5cm from beg.

CROWN SHAPING

Note Change to dpn when there are too few sts to fit comfortably on the circular needle.

DEC RND 1 *[P2tog, k2tog tbl] twice, [p2tog, k2tog] twice, p2tog, 16-st RC, k2, 16-st LC*; rep between *'s 3 times more—172 sts.

RND 2 *[P1, k1] 4 times, p1, [k2, p2] 8 times, k2*; rep between *'s 3 times more.

RND 3 Rep rnd 2.

DEC RND 4 *P1, SK2P, p1, k3tog, p1, [k2, p2] 8 times, k2*; rep between *'s 3 times more—156 sts.

RND 5 *[P1, k1] twice, p1, [k2, p2] 8 times, k2*; rep between *'s 3 times more.

RND 6 Rep rnd 5.

DEC RND 7 *(K2tog) twice, p1, [k2, p2tog] 8 times, k2*; rep between *'s 3 times more—116 sts.

RND 8 *[K2, p1] 9 times, k2*; rep between *'s 3 times more.

RND 9 Rep rnd 8.



DEC RND 10 *[K2tog tbl, p1] 5 times, [k2tog, p1] 4 times, k2tog*; rep between *'s 3 times more—76 sts.

RND 11 *[K1, p1] 9 times, k1*; rep between *'s 3 times more.

RND 12 Rep rnd 11.

DEC RND 13 *K1, (k2tog) 9 times*; rep between *'s 3 times more—40 sts.

RND 14 Knit.

DEC RND 15 (K2tog) 20 times—20 sts.

DEC RND 16 (K2tog) 10 times—10 sts.

Cut yarn leaving a long end.

FINISHING

Pull end through rem sts on dpn, then pull through sts once again and tighten to secure the top. Using tapestry needle, weave in ends on the WS. Lay finished hat on a wet terry-cloth towel; steam lightly with iron on both sides. Leave hat to dry. ♦



Maldonado

CABLE O HAT

Designed by Jessica Gore

INTERMEDIATE

SIZE

One size fits all.

YARN

Rios by Malabrigo, 3½oz/100g hanks,
each approx 210yd/192m (superwash merino wool)
• 1 hank in #687 Aquamarine

NEEDLES

• One each sizes 6 and 7 (4 and 4.5mm) circular needles
each 16"/40cm long, OR SIZE TO OBTAIN GAUGE
• One set (5) size 7 (4.5mm) dpn

NOTIONS

• Stitch markers
• Cable needle (cn)
• Pom pom maker (optional)

MEASUREMENTS

• Brim circumference 20"/51cm
• Depth 8¾"/22cm

GAUGE

19 sts and 28.5 rows = 4"/10cm over cable pat
using larger needles.
TAKE TIME TO CHECK YOUR GAUGE.

STITCH GLOSSARY

3-ST RPC Sl 1 st to cn, hold to *back*, k2, p1 from cn.
3-ST LPC Sl 2 sts to cn, hold to *front*, p1, k2 from cn.
4-ST RC Sl 2 sts to cn, hold to *back*, k2, k2 from cn.
4-ST LC Sl 2 sts to cn, hold to *front*, k2, k2 from cn.

NOTE

Cable pat may be worked following chart or text through
crown shaping. Top of crown shaping is given in text.
See page 48 for chart.

HAT

With smaller circular needle, cast on 96 sts. Join, taking
care not to twist sts, and place marker (pm) for beg of rnd.

RND 1 K1, *p2, p2; rep from * to last 3 sts, p2, k1.

RND 2 Knit.

Rep rnds 1 and 2 six times more.

BEG CABLE PAT

RNDS 1 AND 2 *P2, k2, p8, k2, p2; rep from * around.

RND 3 *[P1, 3-st RPC] twice, [3-st LPC, p1] twice;
rep from * around.

RND 4 *P1, k2, [p2, k2] three times, p1; rep from *
around.

RND 5 *[3-st RPC, p1] twice, [p1, 3-st LPC] twice;
rep from * around.

RNDS 6–8 *[P4, k2] twice, p4; rep from * around.

RND 9 *[3-st LPC, p1] twice, [p1, 3-st RPC] twice;
rep from * around.

RND 10 *P1, k2, [p2, k2] three times, p1; rep from *
around.

RND 11 *[P1, 3-st LPC] twice, [3-st RPC, p1] twice;
rep from * around.

RND 12 *P2, k2, p8, k2, p2; rep from * around.

Rep rnds 1–12 twice more.

CROWN SHAPING

Note Change to dpn when sts no longer fit comfortably
on circular needle.

RND 13 *P2, 3-st LPC, p2tog, p2, p2tog, 3-st RPC, p2;
rep from * around—84 sts.

RND 14 *P3, k2, p4, k2, p3; rep from * around.

RND 15 *P3, 3-st LPC, p2, 3-st RPC, p3;
rep from * around.

RND 16 *P2, p2tog, k2, p2, k2, p2tog, p2;
rep from * around—72 sts.

RNDS 17–18 *P3, k2, p2, k2, p3; rep from * around.

RND 19 *P2tog, 3-st RPC, p2, 3-st LPC, p2tog;
rep from * around—60 sts.

RND 20 *P1, k2, p4, k2, p1; rep from * around.

RND 21 *3-st RPC, p4, 3-st LPC; rep from * around.



TOP OF CROWN SHAPING

Note Beg of rnd shifts 2 sts.

RND 22 K2 and sl these sts to end of last rnd, p2tog, p2, p2tog, k2, *k2, p2tog, p2, p2tog, k2; rep from * to last 2 sts, k2—48 sts.

RND 23 *P4, 4-st LC, p4, 4-st RC; rep from * around.

RND 24 *P2tog twice, k4; rep from * around—36 sts.

RND 25 *P2, k4; rep from * around.

RND 26 *P2, ssk, k2tog; rep from * around—24 sts.

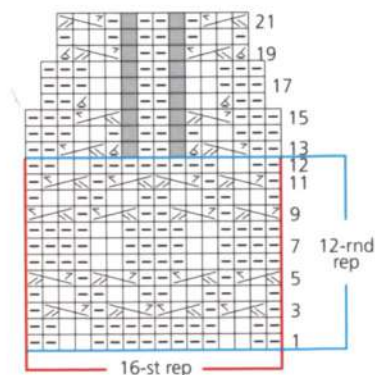
RND 27 *P2, k2; rep from * around.

RND 28 *P2tog, k2tog; rep from * around—12 sts.

FINISHING

Cut yarn and pull through rem sts. Draw up and secure. Block lightly to measurements.

If desired, make 3" / 7.5cm pom pom and secure to top of hat. ♦



Stitch Key

- k
- ▤ p
- ▧ p2tog
- ▨ 3-st RPC
- ▩ 3-st LPC
- no stitch



Rivera

RED, WHITE AND BLUE

Designed by Katie Westermann

INTERMEDIATE

SIZES

Sized for X-Small/Small, Medium/Large and shown in size X-Small/Small.

YARN

Arroyo by Malabrigo, 3½oz/100g hanks, each approx 335yd/306m (superwash merino wool)
• 1 hank each in #063 Natural (A), #150 Azul Profundo (B), and #089 Flama (C)

NEEDLES

- One each sizes 3 and 4 (3.25 and 3.5mm) circular needle, each 16"/40cm long OR SIZE TO OBTAIN GAUGE
- One set (5) size 4 (3.5mm) dpn

NOTIONS

- Stitch marker
- Tapestry needle
- 2 ½-inch/6.5cm diameter pom pom maker (optional)

MEASUREMENTS

- Brim circumference 16 (18½)"/40.5 (47)cm
- Depth 9"/23cm

GAUGE

30 sts and 30 rnds = 4"/10cm over St st and chart pat using larger needle.

TAKE TIME TO CHECK YOUR GAUGE.

NOTE

When changing colors following chart, carry yarn loosely at back of work and bring up new color from under the working color to avoid holes in work.

HAT

Beg at the lower edge with smaller circular needle and A, cast on 120 (140) sts. Join to work in rnds, taking care not to twist sts and pm to mark beg of rnds.

RND 1 *K2, p2; rep from * around.

Rep rnd 1 for for k2, p2 rib for 14 rnds more.

Change to larger circular needle and knit 1 rnd.

Then with B, knit 2 rnds.

Cont in St st (knit every rnd) as foll:

BEG CHART

RND 1 Work the 10-st rep of chart 12 (14) times.

RNDS 2–10 Work even foll chart.

Rep rnds 1–10 twice more, then rnds 1-5 once more.

Cut A and knit 3 rnds with B only.

Piece measures approx 6½"/16.5cm from beg. Cut B.

Then with C, knit 10 rnds.

CROWN SHAPING

NOTE Change to dpns when there are too few sts to fit comfortably on the circular needle.

DEC RND 1 *K8, k2tog; rep from * around—108 (126) sts.

RND 2 AND ALL EVEN RNDS Knit.

DEC RND 3 *K7, k2tog; rep from * around—96 (112) sts.

DEC RND 5 *K6, k2tog; rep from * around—84 (98) sts.

DEC RND 7 *K5, k2tog; rep from * around—72 (84) sts.

DEC RND 9 *K4, k2tog; rep from * around—60 (70) sts.

DEC RND 11 *K3, k2tog; rep from * around—48 (56) sts.

DEC RND 13 *K2, k2tog; rep from * around—36 (42) sts.

DEC RND 15 *K1, k2tog; rep from * around—24 (28) sts.

DEC RND 17 [K2tog] 12 (14) times—12 (14) sts.

RND 18 Knit.

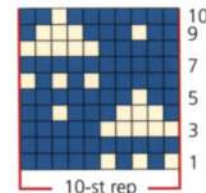
Cut yarn leaving a long end.

FINISHING

Pull end through rem sts on dpn, then pull through sts once again and tighten to secure the top. Using tapestry needle, weave in ends on the WS. Lay finished hat on a wet terry-cloth towel; steam lightly on both sides.

Leave hat to dry.

Using pompom maker and C, make a pompom and sew to top of hat. ♦



Color Key

- Natural (A)
- Azul Profundo (B)



Clara

BRIOCHE LEAF HAT

Designed by Katrin Schubert

EXPERIENCED

SIZE

One size fits all.

YARN

Rios by Malabrigo, 3½oz/100g hanks,
each approx 210yd/192m (superwash merino wool)
• 1 hank each in #877 Quequay (MC)
and #150 Azul Profundo (CC)

NEEDLES

- Size 4 (3.5mm) circular needles each 16"/40cm long,
OR SIZE TO OBTAIN GAUGE
- One set (5) size 4 (3.5mm) dpn

NOTIONS

- Stitch markers

MEASUREMENTS

- Brim circumference approx 17"/43cm, unstretched
- Depth 10"/25.5cm

GAUGE

20 sts and 24 rnds = 4"/10cm over brioche rib,
lightly blocked, using size 4 (3.5mm) needle.
TAKE TIME TO CHECK YOUR GAUGE.

STITCH GLOSSARY

BRK (BRIOCHE KNIT) K the stitch that was slipped
in the previous rnd together with its yo.

BRP (BRIOCHE PURL) P the stitch that was slipped
in the previous row together with its yo.

BRLSLDEC Slip first stitch knitwise, brk next 2 stitches
together, pass slipped stitch over—2 sts dec'd.

BRRSLDEC Slip first stitch knitwise, knit next stitch, pass
slipped stitch over, place stitch on LH needle and
pass the following stitch over, place stitch on
RH needle—2 sts dec'd.

BRKYOBK Brk1, leaving stitch on the LH needle,
yarn over, then brk1 into the same stitch—2 sts inc'd (in
the next CC round, work as foll: sl1yo, p1, sl1yo).

BR4STINC Brk1, leaving stitch on the LH needle, then yo,
k1, yo, k1 all into the same stitch—4 sts inc'd (in the next
CC round, work as foll: sl1yo, p1, sl1yo, p1, sl1yo).

BR4STDEC Ssk, place stitch on LH needle, slip two stitches



knitwise (as if to knit together), knit two stitches together
and pass the two slipped stitches over—4 sts dec'd.

SL1YO Slip 1, yo: bring the yarn forward between the
needles, slip 1 purlwise, bring the yarn to the back over
the needle to create a yarn over. (Slipped stitches and
accompanying yarn over are treated as a single stitch in
stitch counts.)

NOTE

1) Hat is worked in two-color brioche in the round.
Work each round only with color indicated at beginning of
round. Do not break yarn between rounds, drop working
color to RS (front of work) at end of each round and pick
up opposite color without twisting yarns. Two rounds
of knitting, one in each color, are counted as one
round in pattern.

2) Slip all sts purlwise unless otherwise noted.





HAT

With MC, cast on 84 sts. Join, taking care not to twist sts, and place marker (pm) for beg of rnd. Knit 1 rnd.

SET-UP ROUND CC With CC, *sl1yo, p1; rep from * around, drop CC to front of work.

RND 1 MC *Brk1, sl1yo; rep from * around, drop MC to front of work.

RND 1 CC *Sl1yo, brp1; rep from * around, drop CC to front of work.

Rep Rnd 1 (working both MC and CC rounds for each Rnd 1) eleven times more.

RND 13 MC *{Brk1, sl1yo} 7 times, Br4stinc, sl1yo, [brk1, sl1yo] 6 times, pm; rep from * twice more (last marker will be beg of rnd marker)—12 sts inc'd; 96 sts.

RND 13 CC *Sl1yo, brp1; rep from * around.

NOTE Slip markers every rnd.

RNDS 14 AND 16 MC *Brk1, sl1yo; rep from * around.

RNDS 14 AND 16 CC *Sl1yo, brp1; rep from * around.

RND 15 MC *{Brk1, sl1yo} 5 times, brRsldec, sl1yo, brkyobrk, sl1yo, brk1, sl1yo, brkyobrk, sl1yo, brLsldec, sl1yo, [brk1, sl1yo] 4 times, sl marker; rep from * twice more.

RND 15 CC *Sl1yo, brp1; rep from * around.

RND 17 MC *{Brk1, sl1yo} 4 times, brRsldec, sl1yo, brkyobrk, sl1yo, [brk1, sl1yo] 3 times, brkyobrk, sl1yo, brLsldec, sl1yo, [brk1, sl1yo] 3 times, sl marker; rep from * twice more.

RND 17 CC *Sl1yo, brp1; rep from * to end of round.

BEG LEAF PAT

RND 1 MC *{Brk1, sl1yo} 3 times, brRsldec, sl1yo, brkyobrk, sl1yo, brRsldec, sl1yo, br4stinc, sl1yo, brLsldec, sl1yo, brkyobrk, sl1yo, brLsldec, sl1yo, [brk1, sl1yo] 2 times, sl marker; rep from * twice more.

RND 1 CC *Sl1yo, brp1; rep from * to end of round.

Rnds 2 and 4 MC *Brk1, sl1yo; rep from * around.

RNDS 2 AND 4 CC *Sl1yo, brp1; rep from * around.

RND 3 MC *{Brk1, sl1yo} 2 times, [brRsldec, sl1yo, brkyobrk, sl1yo] 2 times, brk1, sl1yo, [brkyobrk, sl1yo, brLsldec, sl1yo] 2 times, brk1, sl1yo, sl marker; rep from * twice more.

RND 3 CC *Sl1yo, brp1; rep from * around.

RND 5 MC *Brk1, sl1yo, [brRsldec, sl1yo, brkyobrk, sl1yo] 2 times, [brk1, sl1yo] 3 times, [brkyobrk, sl1yo, brLsldec, sl1yo] 2 times, sl marker; rep from * twice more.

RND 5 CC *Sl1yo, brp1; rep from * around.

RND 6 MC Rep rnd 2 MC.

RND 6 CC Rep rnd 2 CC.

Rep rnds 1–6 for leaf pat three more times.

CROWN SHAPING

RND 1 MC *{Brk1, sl1yo} 3 times, brRsldec, sl1yo, brkyobrk, sl1yo, brRsldec, sl1yo, brk1, sl1yo, brLsldec, sl1yo, brkyobrk, sl1yo, brLsldec, sl1yo, [brk1, sl1yo] 2 times, sl marker; rep from * twice more—12 sts dec'd; 84 sts.

RND 1 CC *Sl1yo, brp1; rep from * to end of round.

RNDS 2, 4, 6, 8 AND 10 MC *Brk1, sl1yo; rep from * around.

RNDS 2, 4, 6, 8 AND 10 CC *Sl1yo, brp1; rep from * around.

RND 3 MC *{Brk1, sl1yo} 2 times, brRsldec, sl1yo, brkyobrk, sl1yo, brRsldec, sl1yo, brk1, sl1yo, brLsldec, sl1yo, brkyobrk, sl1yo, brLsldec, sl1yo, brk1, sl1yo, sl marker; rep from * twice more—12 sts dec'd; 72 sts.

RND 3 CC *Sl1yo, brp1; rep from * around.

RND 5 MC *{Brk1, sl1yo, brRsldec, sl1yo} 2 times, [brk1, sl1yo, brLsldec, sl1yo] 2 times, sl marker; rep from * twice more—24 sts dec'd; 48 sts.

RND 5 CC *Sl1yo, brp1; rep from * around.

RND 7 MC *{Brk1, sl1yo} 2 times, brRsldec, sl1yo, brk1, sl1yo, brLsldec, sl1yo, brk1, sl1yo, sl marker; rep from * twice more—12 sts dec'd; 36 sts.

RND 7 CC *Sl1yo, brp1; rep from * around.

RND 9 MC *Brk1, sl1yo, brRsldec, sl1yo, brk1, sl1yo, brLsldec, sl1yo, sl marker; rep from * twice more—12 sts dec'd; 24 sts.

RND 9 CC *Sl1yo, brp1; rep from * around.

RND 11 MC *Brk1, sl1yo, br4stdec, sl1yo, remove marker; rep from * twice more (do not remove beg of rnd marker)—12 sts dec'd; 12 sts.

RND 11 CC *Sl1yo, brp1; rep from * to end of round, cut CC and drop to WS.

RND 12 MC *Sl 1 knitwise, k1, pass slipped stitch over; rep from * to end of round—6 sts dec'd; 6 sts.

FINISHING

Cut MC and pull through rem sts. Draw up and secure. Weave in MC and CC ends separately.

Block lightly to measurements. ♦

Eden

LEAF COLORWORK HAT

Designed by Emily Dormier

INTERMEDIATE

SIZE

One size fits most.

YARN

Sock by Malabrigo, 3½oz/100g hanks, each approx 400yd/365m (superwash merino wool)
• 1 hank each in in #805 Alcauil (light green—MC) and #851 Turner (dark green—CC)

NEEDLES

- Size 2 (2.75mm) circular needle, 16"/40cm long, OR SIZE TO OBTAIN GAUGE
- One set (5) size 2 (2.75mm) dpn

NOTIONS

- Stitch markers
- Tapestry needle

MEASUREMENTS

- Circumference 21"/53cm
- Depth 8¼"/21cm

GAUGE

34 sts and 38 rnds = 4"/10cm over St st and chart pat using size 2 (2.75mm) needle.
TAKE TIME TO CHECK YOUR GAUGE.

HAT

Beg at the lower edge with circular needle and MC, cast on 168 sts. Join to work in rnds, taking care not to twist sts on needle and pm to mark beg of rnds.

RND 1 *K2, p2; rep from * around.

Rep last rnd for k2, p2 rib until piece measures 2"/5cm from beg.

INC RND [K2, p2] 3 times, k1, kfb, [p2, k2] 3 times, p1, pfb; rep from * around—180 sts.
With MC, knit 3 rnds.

BEG CHART

See page 58 for chart.

RNDS 1–52 Work foll the 20-st chart rep for 9 reps.
Cut CC.

CROWN SHAPING

Change to dpn with 45 sts divided onto each of the 4 dpn. Cont with MC only as foll:

DEC RND 1 [K16, k2tog] 10 times—170 sts.

RND 2 Knit.

DEC RND 3 [K15, k2tog] 10 times—160 sts.

RND 4 Knit.

DEC RND 5 [K14, k2tog] 10 times—150 sts.

RND 6 Knit.

DEC RND 7 [K13, k2tog] 10 times—140 sts.

RND 8 Knit.

DEC RND 9 [K12, k2tog] 10 times—130 sts.

RND 10 Knit.

DEC RND 11 [K11, k2tog] 10 times—120 sts.

RND 12 Knit.

DEC RND 13 [K10, k2tog] 10 times—110 sts.

DEC RND 14 [K9, k2tog] 10 times—100 sts.

DEC RND 15 [K8, k2tog] 10 times—90 sts.

DEC RND 16 [K7, k2tog] 10 times—80 sts.

DEC RND 17 [K6, k2tog] 10 times—70 sts.

DEC RND 18 [K2, k2tog, k1, k2tog] 10 times—50 sts.

DEC RND 19 *K1, (k2tog) twice; rep from * around—30 sts.

DEC RND 20 *K2tog, k1; rep from * around—20 sts.

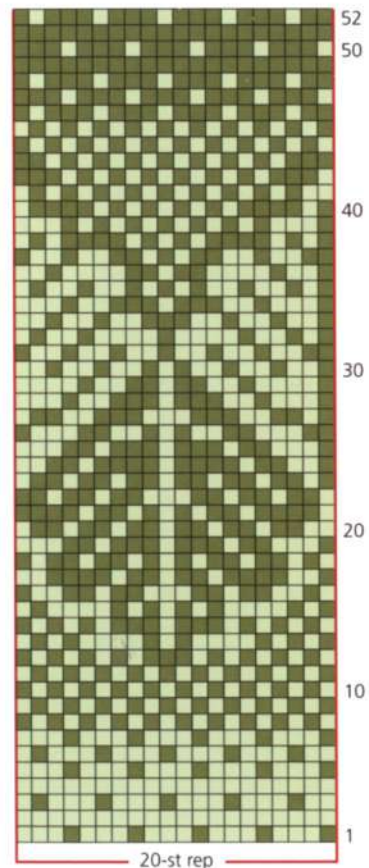
DEC RND 21 *K2tog; rep from * around—10 sts.

Cut yarn leaving a long end.

FINISHING

Pull end through rem sts on dpn, then purl through sts once again and tighten to secure the top. Using tapestry needle, weave in ends on the WS. Lay finished hat on a wet terry-cloth towel; steam lightly with iron on both sides. Leave hat to dry. ♦





Color Key

- Alcaucil (MC)
- Turner (CC)



Abbreviations

KNIT ABBREVIATIONS

approx approximately
beg begin(ning)
CC contrast color
cn cable needle
cm centimeter(s)
cont continue(ing)
dec decrease(ing)
dpn double-pointed needle(s)
foll follow(s)(ing)
g gram(s)
inc increase(ing)
k knit
k2tog knit two stitches together
k3tog knit three stitches together
kfb knit into front and back of stitch
LH left-hand
M1 make one (see Glossary)
M1p make one purl (see Glossary)
MC main color
m meter(s)
mm millimeter(s)
oz ounce(s)
p purl
p2tog purl two stitches together
pat(s) pattern(s)
pm place marker
rem remain(s)(ing)
rep repeat

RH right-hand
rnd(s) round(s)
RS right side
SKP, SK2P, S2KP see Glossary
sl slip
sl st slip stitch
sm slip marker
ssk slip, slip, knit (see Glossary)
st(s) stitch(es)
St st stockinette stitch (see Glossary)
tbl through back loop
tog together
WS wrong side
wyib with yarn in back
wyif with yarn in front
yd(s) yard(s)
yo yarn over
 * repeat directions following * as many times as indicated
 [] repeat directions inside brackets as many times as indicated

CROCHET ABBREVIATIONS

ch chain
sl st slip stitch
sc single crochet
hdc half-double crochet
dc double crochet
tr treble crochet

Knitting Needles

U.S.	METRIC
0	2mm
1	2.25mm
2	2.75mm
3	3.25mm
4	3.5mm
5	3.75mm
6	4mm
7	4.5mm
8	5mm
9	5.5mm
10	6mm
10½	6.5mm
11	8mm
13	9mm
15	10mm
17	12.75mm
19	15mm
35	19mm

***Note** The needle sizes used in this book vary, based on the design and desired drape of the fabric. They may be different than the suggested needle size on the ball band. To achieve the look of the pictured garment, always make a gauge swatch and change the needle size to obtain the gauge given at the beginning of the instructions.



Distributors

USA

Malabrigo
www.malabrigoyarn.com

Europe

Malabrigo
www.malabrigoyarn.com

Finland

Lankatalo Priima
www.lankatalopriima.com

Russia

Praimar Hobby, LLC
www.vk.com/malabrigo

Sweden

Hamilton Designs
www.corneliahamilton.com

Big Sellers

Hana Trading Co.

42-472 Ihyeondong
 Seogu, Daegu
 Korea

Gosyo Co. Ltd.

20 Nishikanemaru, Kita gata-cho
 Ichicomiy City, Aichi Pref.
 Japan 493-8001

Glossary

Garner stitch

Knit every row.
 For circular knitting: Alternate knit one round, purl one round.

Make one Insert tip of LH needle from front to back under the strand between the last stitch worked and the next stitch on the needle. Knit into the back loop of strand.

Make one purl Work as for make one but purl into the back loop of strand.

SKP Slip 1, k1, pass slip stitch over k1.

SK2P Slip 1, knit 2 stitches together, pass slip stitch over k2tog—2 sts dec'd.

S2KP Slip 2 stitches as if to knit 2 together, k1, pass 2 slip stitches over k1.

ssk Slip 2 sts knitwise, one at a time, to right-hand needle. Insert tip of left-hand needle into fronts of these sts from left to right and knit them together.

St st Knit right-side rows and purl wrong-side rows. For circular knitting: Knit all rounds.

CREDITS Photographer: ROSE CALLAHAN Hair and Makeup: ELENA LYAKIR Creative Director: DIANE LAMPHRON Technical Editors: CARLA SCOTT, MARI LYNN PATRICK, LORETTA DACHMAN, RENEE LORION Fashion Stylist / Yarn Coordinator: LINDSAY MORRIS

