



Maine Pine Mittens



Sizes: S (L)

Small: 4 in / 10 cm wide at the widest part, 7.5 in / 19 cm tall (**not** including ribbing).

Large: 4.5 in / 11.5 cm wide at the widest part, 8.8 in / 22.4 cm tall (**not** including ribbing).

Yarn: 105 (128) yards MC (off-white), 65 (92) yards **CC1** (green), 49 (54) yards **CC2** (blue). Sport weight. Includes 10% extra for margin of error.

I used Knit Picks Wool of the Andes Sport in Oyster Heather, Forest Heather, and Winter Night. Any sport-weight yarn should work as long as you get gauge. I recommend choosing a more rough or “toothy” yarn, to make colorwork easier.

Needles: 2.75 mm circular or double-pointed needles. If using circulars, choose a long enough circumference for magic loop.

Other supplies: tapestry needle, 2 stitch markers, scrap yarn or stitch holder

Gauge: 14 stitches and 15 rows per 2 inches (5 cm) blocked. To ensure an accurate measurement, knit and block a colorwork swatch in the round.

Abbreviations:

CC	Contrast color
MC	Main color
CO	Cast on
BOR	Beginning of round
K	Knit
P	Purl
K2tog	Knit two together
SKP	Slip 1 stitch knitwise, knit the next stitch, then pass the slipped stitch over
M1L	Make one stitch left-leaning: insert left needle into bar between stitches from front to back, then knit through the back leg
St(s)	Stitch(es)



★ Pattern ★

Mitten:

CO 52 (56) st in **CC2** using long tail or preferred stretchy cast on. Join in the round, placing a stitch marker to indicate BOR. Knit 1.5 inches (or desired length) K2P2 ribbing for cuff. K 1 round. Break yarn. 52 (56) st.

Join MC and **CC1** and follow charts as written, beginning with Chart 1. **Be certain you are using the correct chart for your size.** Complete 1 row each of Chart 1 and Chart 2 per round. Place a marker to indicate the change between charts. *[TIP: for floats longer than 5 or 6 stitches, I recommend using Ladder Back Jacquard (LBJ). If catching floats, stagger where they are caught each round so that they don't show through. [LBJ Hyperlink](#)]*

At the red line, place sts on holder or scrap yarn. CO 11 (13) st using backwards loop (or other cast on if preferred). 62 (66) st.

At row 44 (54), change from **CC1** to **CC2** per chart.

Note that the decreases on the palm side start one row earlier than on the back!

To close the mitten, either use the kitchener stitch with **CC2** or cut yarn and pull through all sts. Weave in ends.

Thumb:

For thumb, place 11 (13) st back on needle from holder or scrap yarn. Using MC and **CC1**, pick up 1 additional st in the corner, then pick up 11 (13) st from the cast on edge, and finally pick up 1 more st in the other corner. 24 (28) st. Follow Chart 3.

Close thumb using same method as mitten closure. Weave in ends. You can use the ends to help close any gaps in the corners by the thumb.

The Other One:

For the second mitten, all steps are the same but follow **Chart 2** backwards.

-- 🌲 -- ★ -- 🌲 -- ★ -- 🌲 -- ★ -- 🌲 -- ★ -- 🌲 -- ★ -- 🌲 -- ★ -- 🌲 --

Did you make these mittens? I'd love to see! Post your project on Ravelry and/or tag me on Instagram (@knitlia).

Are you stuck, or do you have questions? You can reach me on Ravelry (Ameliap6) or Instagram (@knitlia).

Selling your finished Maine Pine Mittens is fine. Please give me credit as the designer :) Please do not distribute copies of my written pattern without permission.

Chart 1 (back of hand), size Small

Key	
	No Stitch
	Main Color
	Contrast Color 1 (Green)
	Contrast Color 2 (Blue)
	SKP (LL Decrease)
	K2tog (RL Decrease)

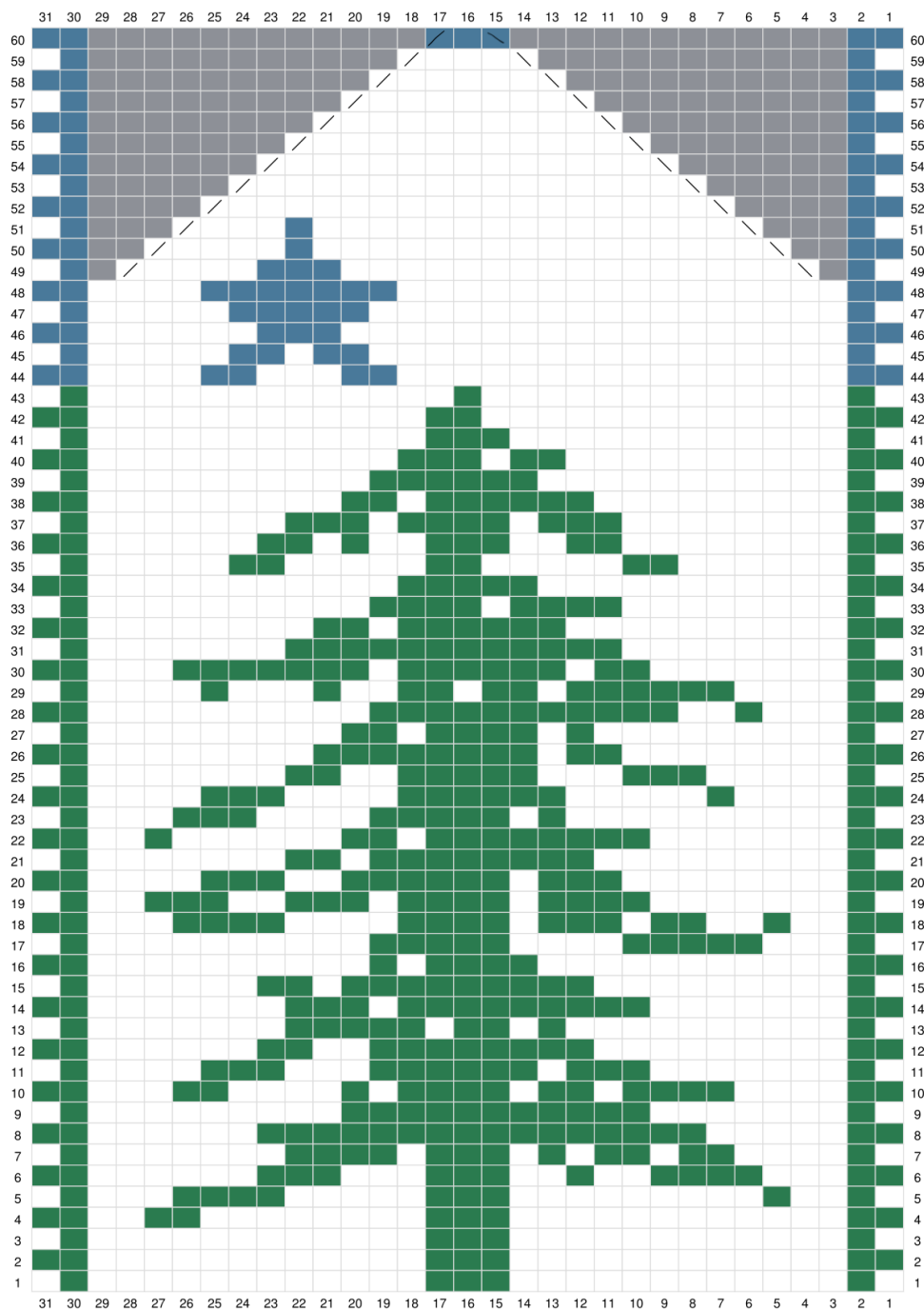




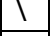

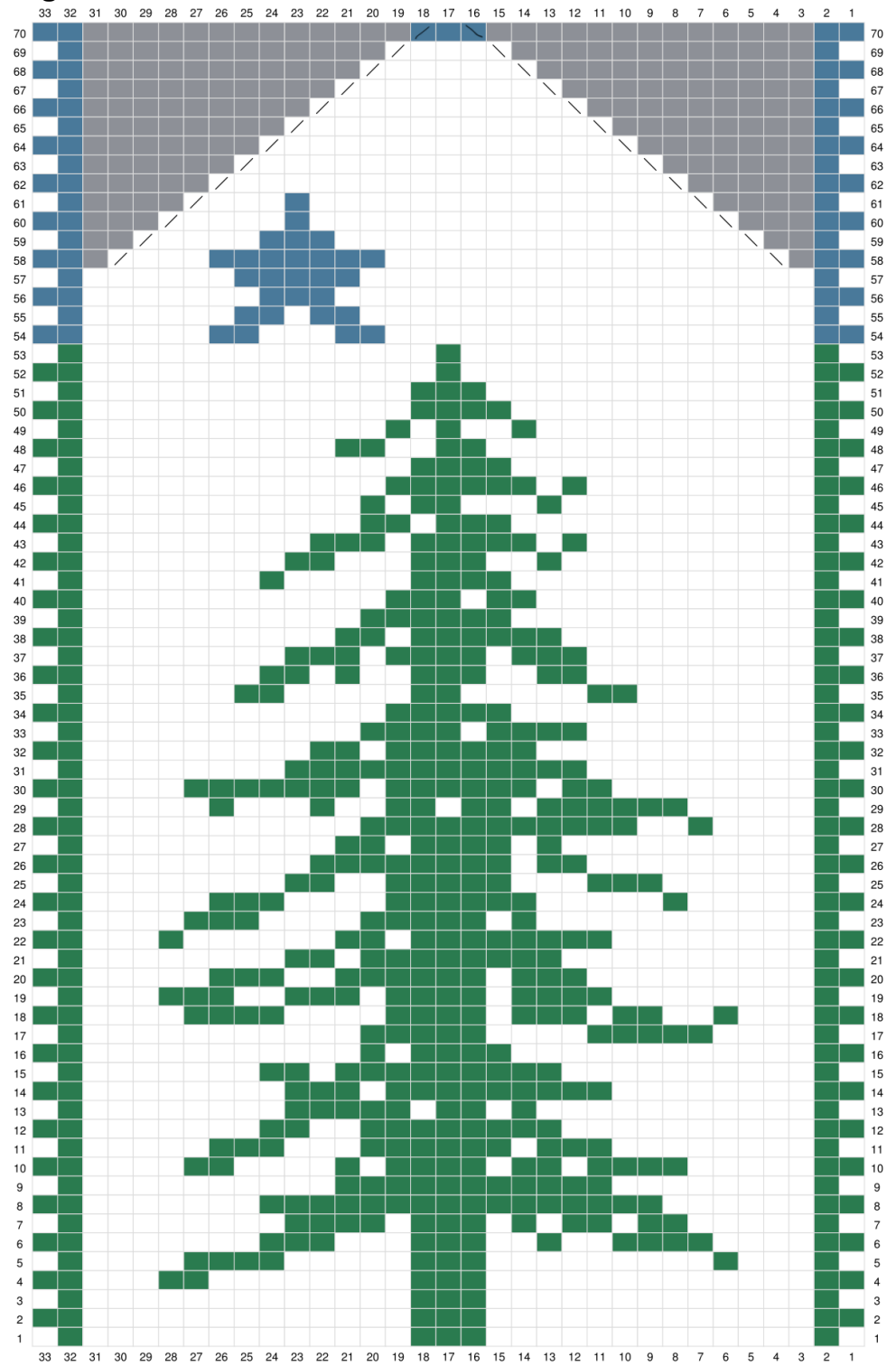



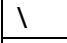
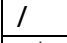
Chart 1 (back of hand), size Large

Key	
	No Stitch
	Main Color
	Contrast Color 1 (Green)
	Contrast Color 2 (Blue)
	SKP (LL Decrease)
	K2tog (RL Decrease)



Designed with Stitch Fiddle

Chart 2 (palm), Size Small

Key	
	No Stitch
	Main Color
	Contrast Color 1 (Green)
	Contrast Color 2 (Blue)
	SKP (LL Decrease)
	K2tog (RL Decrease)
	M1L

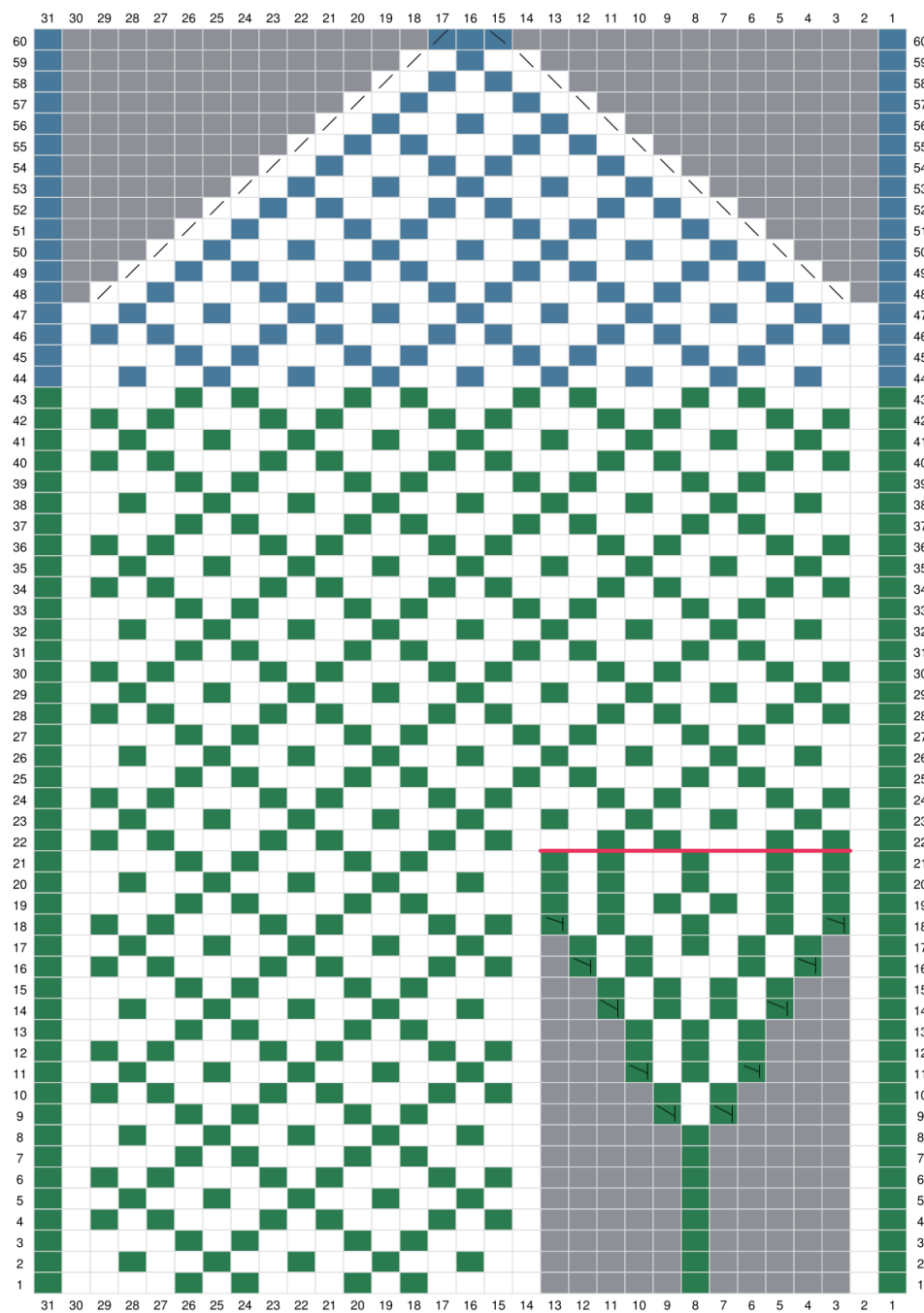
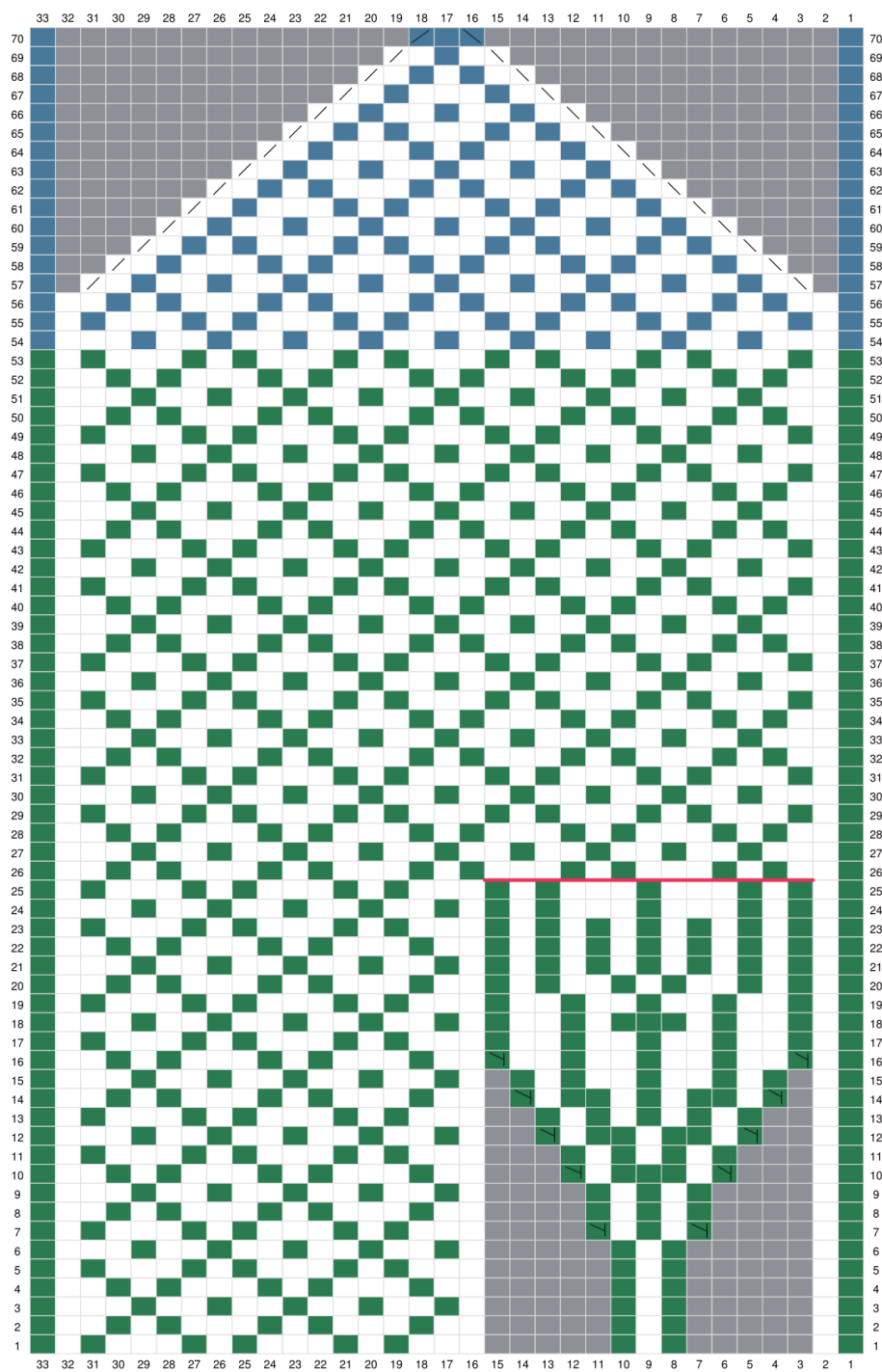


Chart 2 (palm), Size Large

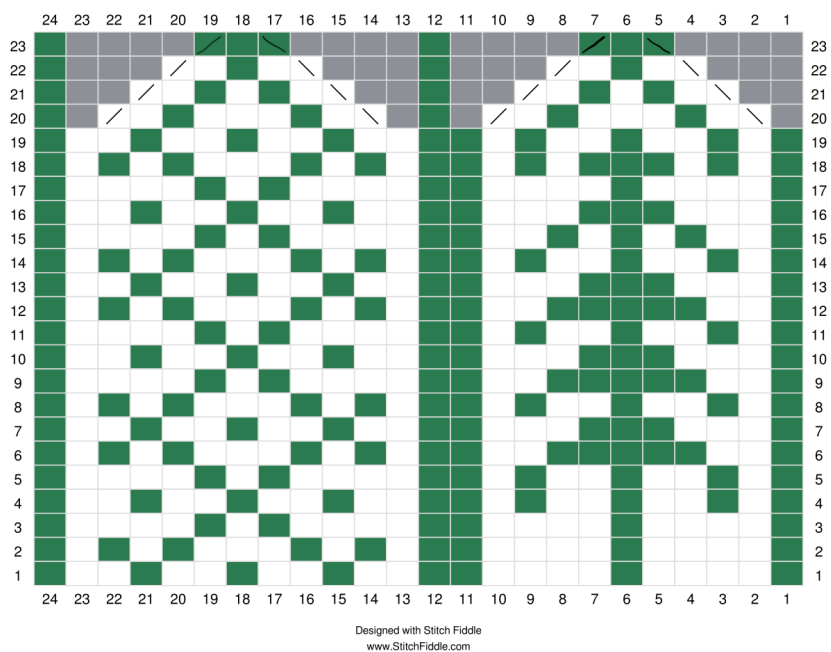
Key	
	No Stitch
	Main Color
	Contrast Color 1 (Green)
	Contrast Color 2 (Blue)
	SKP (LL Decrease)
	K2tog (RL Decrease)
	M1L



Designed with Stitch Fiddle
www.knittingfiddle.com

Chart 3 (thumb)

Size Small:



Key	
	No Stitch
	Main Color
	Contrast Color 1 (Green)
	SKP (LL Decrease)
	K2tog (RL Decrease)

Size Large:

