

MAYO EN CÓRDOBA SHAWL

by Esther Lara (@nosolopunto)



Mayo en Córdoba is a light and airy crescent-shaped shawl designed to be much wider than it is long, providing both comfort and elegance. It was created in 2025 to celebrate the first Creativamente Córdoba knitting festival. It is inspired by the most important month in our beautiful city: May. In it, I wanted to represent its Festival of the Patios (unique in the world and a World Heritage Site) and the May fair.

You have two options for this shawl: if you prefer it less deep, follow the option without short rows; if you like it deeper, knit the option with short rows.

Technical Information

Measurements

The original Mayo en Córdoba Shawl has a crescent shape and approximate measurements of 210 x 58 cm (option with short rows) or 210 x 44 cm (option without short rows). These correspond to the finished and blocked garment.

Materials

Yarn

800 meters (short rows option) or 750 meters (option without short rows) of Pure Merboo from Yarnity, 80% superfine merino and 20% bamboo, 400 meters in 100 grams, colour Wallada. If you prefer to use another yarn, I recommend using a yarn that is not too thick (fingering or sport) and does not have too much halo or many colour changes so that the lace stands out more. You can use any

yarn you like, of any weight, but keep in mind that the size may vary and you will use a different amount of material than the original.

Needles

3.75 mm circular knitting needles (or the size needed to obtain gauge) and 40 and 80 cm cables. It can also be knit with straight needles.

Other

Tapestry needle, scissors, markers, blocking materials.

Gauge

20 stitches and 32 rows = 10 cm x 10 cm. Swatch knit in Stockinette stitch flat and measured after blocking. Although gauge is not essential for this garment, the final size, as well as the yarn consumption, may vary if it is not met.

Abbreviations

k2tog – knit 2 sts together

k3tog – knit 3 sts together

inc – make one (M1).

B – bobble. Knit 5 stitches in 1, turn work and p5, turn work, k5, turn work, p5, turn work and knit 5 stitches together. You can use a crochet hook to make it easier. (Explanatory video below).

PM – Place a marker

k – RS, knit stitch, WS, purl stitch

ssk – slip, slip, knit

sssk – slip, slip, slip, knit

kyok – knit 1 and, without dropping the stitch, make a yarn over and knit 1

SM – slip marker

yo – yarn over

RS - Right side

WS - wrong side

st - stitch/es

DS – double stitch (german short rows)

p – RS, purl stitch, WS, knit stitch

[HOW TO MAKE BOBBLES](#)



Instructions:

Section 0: *garter tab cast on*

- Cast on 3 sts with a long-tail cast on
- Knit 4 rows of garter stitch
- Turn the work 90 degrees and make a yarn over, pick up 1 st from the side of the garter stitch, make another yarn over. Turn the work 90 degrees again and pick up the three stitches from the cast on we made. You will have 9 stitches in total.

Here is a helpful video:

[How to start a crescent shawl without a hump](#)



- Turn the work and work: k3, kyok, k1, kyok, k3 (RS)
- Turn the work and work: k3, yo, k7, yo, k3 (WS)

Tip: to prevent the garter stitch edge from becoming tight, make a yarn over after the second stitch of each row and, on the next row, drop it to make it looser.



Section 1

Setup row

1. RS: Turn the work and knit: k3, kyok, k to 4 sts before end of row, kyok, k3. Total: k3 + 13 sts + k3.
2. WS: Turn the work and knit: k3, yo, k to 3 sts before end of row, yo, k3. Total: k3 + yo + 13 sts + yo + k3.

Ceramic floor

1. **RS:** k3, corresponding row of chart 1, k3. You will have k3 + kyok + 13 sts + kyok + k3.
2. **WS:** k3, corresponding row of chart 1, k3.
3. Repeat steps 1 and 2 until you have repeated chart 1 two and a half times (60 rows). You will have k3 + 195 sts + k3.



Intermediate motif (lanterns)

To build a deeper shawl, we are going to work a series of german short rows in some parts. If you don't want to, you don't have to. The stitch count does not change. Remove the markers on the next row.

Lanterns (bobbles) with short rows

1. **RS:** k3, kyok, p to 4 sts before end of row, kyok, k3.
2. **WS:** k3, yo, p to 20 sts before end of row, turn work
3. **RS:** create a DS, p to 20 sts before end of row, turn work.
4. **WS:** create a DS, p to 20 sts before the DS of the previous row, turn work.
5. **RS:** create a DS, p to 20 sts before the DS of the previous row, turn work.
6. **WS:** create a DS, p to 3 sts before end of row (working p1 in each DS you encounter), yo, k3.
7. **RS:** k3, kyok, p to 4 sts before end of row (working p1 in each DS you encounter), kyok, k3.
8. **WS:** k3, yo, p to 3 sts before end of row, yo, k3.
9. **RS:** k3, kyok, k to 4 sts before end of row, kyok, k3.
10. **Repeat** steps 8 and 9, repeat step 8 (you will have 5 rows of Stockinette stitch in total).
11. **RS (bobble row):** k3, kyok, k6, *1B, k5*, repeat from * to * 34 times, k6, kyok, k3. You will have k3 + kyok + 217 sts + kyok + k3.
12. **WS:** k3, yo, p to 3 sts before end of row, yo, k3.
13. **RS:** k3, kyok, k to 4 sts before end of row, kyok, k3.
14. **Repeat** steps 12 and 13 (you will have 4 rows of Stockinette stitch in total).
15. **WS:** k3, yo, k to 3 sts before end of row, yo, k3.
16. **RS:** k3, kyok, k to 20 sts before end of row, turn work
17. **WS:** create a DS, k to 20 sts before end of row, turn work.
18. **RS:** create a DS, k to 20 sts before the DS of the previous row, turn work.

19. **WS:** create a DS, k to 20 sts before the DS of the previous row, turn work.
20. **RS:** create a DS, k to 4 sts before end of row (working k1 in each DS you encounter), kyok, k3.
21. **WS:** k3, yo, k to 3 sts before end of row (working k1 in each DS you encounter), yo, k3. End of short rows.



Lanterns (bobbles) without short rows

1. **RS:** k3, kyok, p to 4 sts before end of row, kyok, k3.
2. **WS:** k3, yo, p to 3 sts before end of row, yo, k3.
3. **RS:** k3, kyok, p to 4 sts before end of row, kyok, k3.
4. **WS:** k3, yo, p to 3 sts before end of row, yo, k3.
5. **RS:** k3, kyok, k to 4 sts before end of row, kyok, k3.
6. Repeat steps 4 and 5, repeat step 4 (you will have 5 rows of Stockinette stitch in total).

7. **RS (bobble row):** k3, kyok, k6, *1B, k5*, repeat from * to * 34 times, k6, kyok, k3. You will have k3 + kyok + 217 sts + kyok + k3.
8. **WS:** k3, yo, p to 3 sts before end of row, yo, k3.
9. **RS:** k3, kyok, k to 4 sts before end of row, kyok, k3.
10. **Repeat** steps 8 and 9 (you will have 4 rows of Stockinette stitch in total).
11. **WS:** k3, yo, k to 3 sts before end of row, yo, k3.
12. **RS:** k3, kyok, k to 4 sts before end of row, kyok, k3.
13. **WS:** k3, yo, k to 3 sts before end of row, yo, k3.

Section 2: main motif (flowerpots)

Part 1: Stockinette stitch with short rows

1. **RS:** k3, kyok, k to 4 sts before end of row, kyok, k3.
2. **WS:** k3, yo, p to 3 sts before end of row, yo, k3.
3. **RS:** k3, kyok, k to 20 sts before end of row, turn work
4. **WS:** create a DS, p to 20 sts before end of row, turn work.
5. **RS:** create a DS, k to 20 sts before the DS of the previous row, turn work.
6. **WS:** create a DS, p to 20 sts before the DS of the previous row, turn work.
7. **Repeat** steps 5 and 6.
8. **RS:** create a DS, k to 4 sts before end of row (working k1 in each DS you encounter), kyok, k3.
9. **WS:** k3, yo, p to 3 sts before end of row (working p1 in each DS you encounter), yo, k3. End of short rows.

Part 1: Stockinette stitch without short rows

1. **RS:** k3, kyok, k to 4 sts before end of row, kyok, k3.
2. **WS:** k3, yo, p to 3 sts before end of row, yo, k3.
3. **Repeat** steps 1 and 2 (you will have 4 rows of Stockinette stitch in total).

Part 2: chart (same for both options)

Begin the main chart.

1. **RS:** k3, corresponding row of chart 2, k3.
2. **WS:** k3, corresponding row of chart 2, k3.
3. **REPEAT** steps 1 and 2 until you finish chart 2.



Part 3: Stockinette stitch (same for both options)

1. **RS:** k3, kyok, k to 4 sts before end of row, kyok, k3.
2. **WS:** k3, yo, p to 3 sts before end of row, yo, k3.

3. **Repeat** steps 1 and 2 (you will have 4 rows of Stockinette stitch in total).

Intermediate motif with short rows (lanterns)

This section is identical to the previous one except for row 11 (bobble row).

1. **RS:** k3, kyok, p to 4 sts before end of row, kyok, k3.
2. **WS:** k3, yo, p to 20 sts before end of row, turn work
3. **RS:** create a DS, p to 20 sts before end of row, turn work.
4. **WS:** create a DS, p to 20 sts before the DS of the previous row, turn work.
5. **RS:** create a DS, p to 20 sts before the DS of the previous row, turn work.
6. **WS:** create a DS, p to 3 sts before end of row (working p1 in each DS you encounter), yo, k3.
7. **RS:** k3, kyok, p to 4 sts before end of row (working p1 in each DS you encounter), kyok, k3.
8. **WS:** k3, yo, p to 3 sts before end of row, yo, k3.
9. **RS:** k3, kyok, k to 4 sts before end of row, kyok, k3.
10. **Repeat** steps 8 and 9, repeat step 8 (you will have 5 rows of Stockinette stitch in total).
11. **RS (bobble row):** RS: k3, kyok, k3, *1B, k5*, repeat from * to * 63 times, 1B, k3, kyok, k3. You will have k3 + 391 sts + k3 (64 bobbles).
12. **WS:** k3, yo, p to 3 sts before end of row, yo, k3.
13. **RS:** k3, kyok, k to 4 sts before end of row, kyok, k3.
14. **Repeat** steps 12 and 13 (you will have 4 rows of Stockinette stitch in total).
15. **WS:** k3, yo, k to 3 sts before end of row, yo, k3.
16. **RS:** k3, kyok, k to 20 sts before end of row, turn work

Copying and reproduction in any form of both the content and images of this pattern are prohibited. Redistribution and publication of the content and images without authorization are also prohibited. For any work based on this pattern, it is always necessary to name and give credit to the designer. Using this pattern for commercial purposes is prohibited.

17. **WS:** create a DS, k to 20 sts before end of row, turn work.
18. **RS:** create a DS, k to 20 sts before the DS of the previous row, turn work.
19. **WS:** create a DS, k to 20 sts before the DS of the previous row, turn work.
20. **RS:** create a DS, k to 3 sts before end of row (working k1 in each DS you encounter), kyok, k3.
21. **WS:** k3, yo, k to 3 sts before end of row (working k1 in each DS you encounter), yo, k3 k3. You will have 417 sts. End of short rows.

Intermediate motif (lanterns) without short rows

1. **RS:** k3, kyok, p to 4 sts before end of row, kyok, k3.
2. **WS:** k3, yo, p to 3 sts before end of row, yo, k3.
3. **RS:** k3, kyok, p to 4 sts before end of row, kyok, k3.
4. **WS:** k3, yo, p to 3 sts before end of row, yo, k3.
5. **RS:** k3, kyok, k to 4 sts before end of row, kyok, k3.
6. **Repeat** steps 4 and 5, repeat step 4 (you will have 5 rows of Stockinette stitch in total).
7. **RS (bobble row):** RS: k3, kyok, k3, *1B, k5*, repeat from * to * 63 times, 1B, k3, kyok, k3. You will have k3 + 391 sts + k3 (64 bobbles).
8. **WS:** k3, yo, p to 3 sts before end of row, yo, k3.
9. **RS:** k3, kyok, k to 4 sts before end of row, kyok, k3.
10. **Repeat** steps 8 and 9 (you will have 4 rows of Stockinette stitch in total).
11. **WS:** k3, yo, k to 3 sts before end of row, yo, k3.
12. **RS:** k3, kyok, k to 4 sts before end of row, kyok, k3.

13. **WS:** k3, yo, k to 3 sts before end of row, yo, k3. You will have 417 sts.



Section 3: final motif (ruffles)

Repeat the corresponding row of chart 3 to the end of the row. You will need 1 more st for it to work out (418 sts), so, make 1 inc wherever you want along this row, it won't be noticeable. Continue knitting chart 3 until you finish it. Bind off the stitches normally (you can even make them tighter if you want) respecting whether they are knit or purl.











Tip: at this point in the shawl, you may have an extra or missing stitch. Don't worry, it's normal. Adjust the number of stitches needed in this row. To do this, you must subtract 2 sts from the total and have a number of stitches divisible by 4.

Cut the yarn, weave in ends, block and... you have your finished Mayo en Córdoba Shawl!



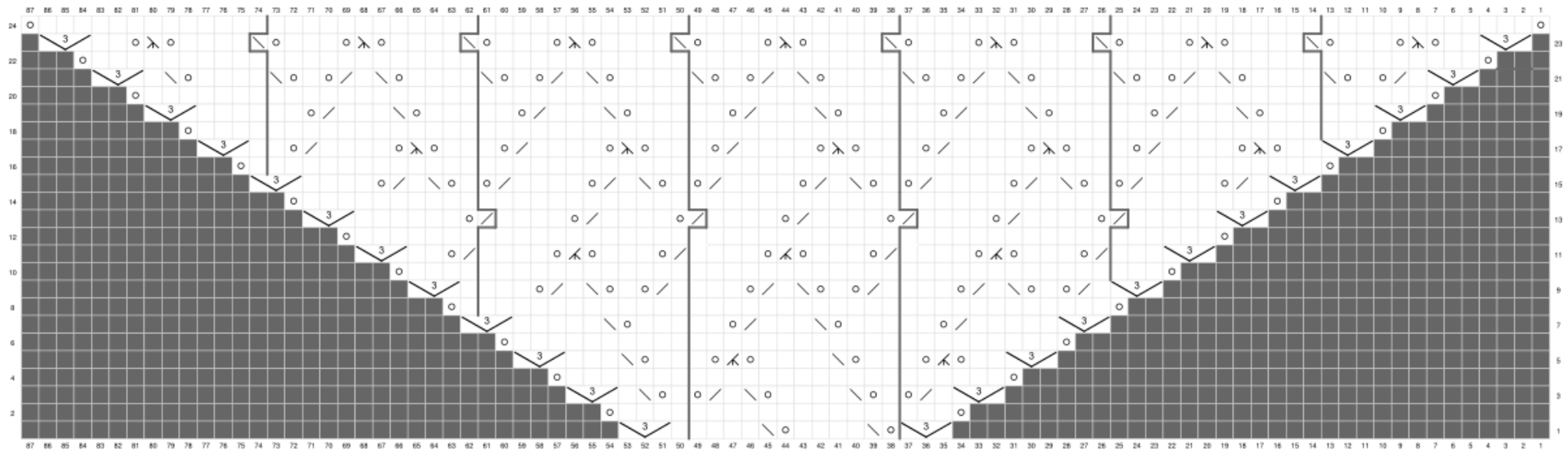
Charts

Chart Legend

	RS: k - knit WS: p - purl
	ssk - slip, slip, knit
	k2tog - knit 2 sts together
	yo - yarn over
	k3tog - knit 3 stitches together
	sssk - slip, slip, slip, knit
	kyok - k1 and, without dropping the stitch, yo and k1
	RS: p - purl WS: k - knit
	repeat from * to * when you have enough stitches. PM/SM
	repeat from * to *. PM/SM

Copying and reproduction in any form of both the content and images of this pattern are prohibited. Redistribution and publication of the content and images without authorization are also prohibited. For any work based on this pattern, it is always necessary to name and give credit to the designer. Using this pattern for commercial purposes is prohibited.

Chart 1 (ceramic floor)



This image is very large and you might see it too small on paper or in the app. I am including the repeating motif so you can see it larger (it is rotated 90 degrees to be seen better).

Central part of chart 1

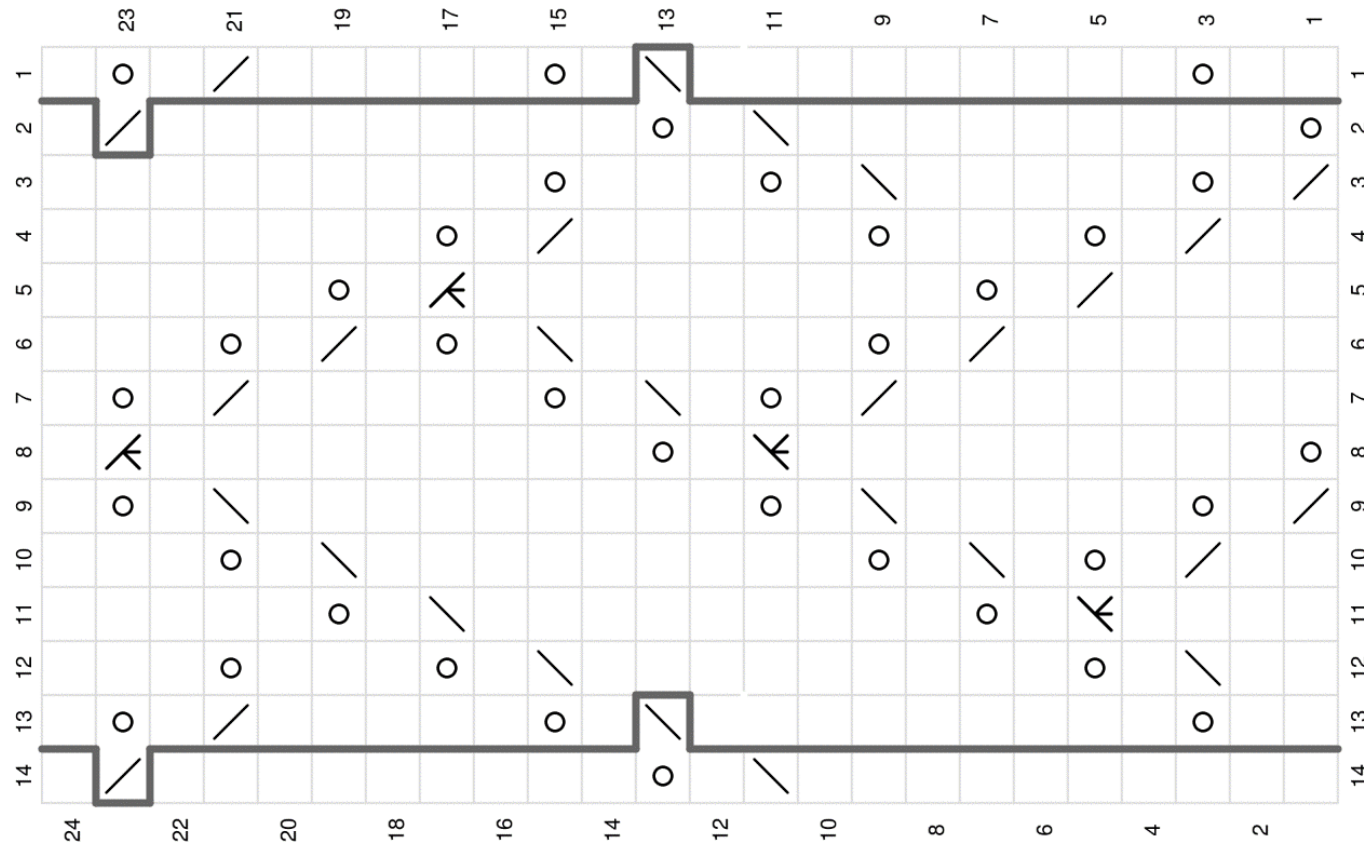
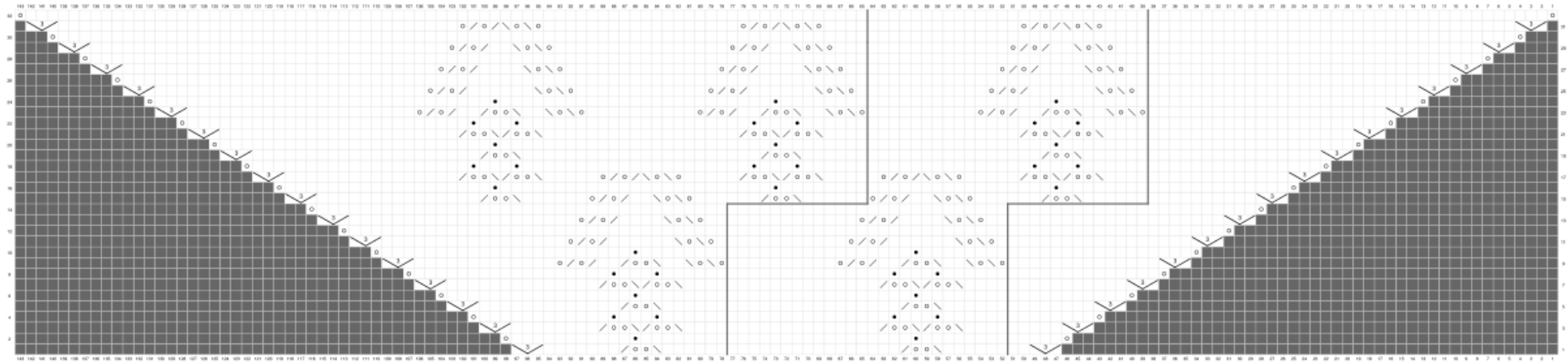


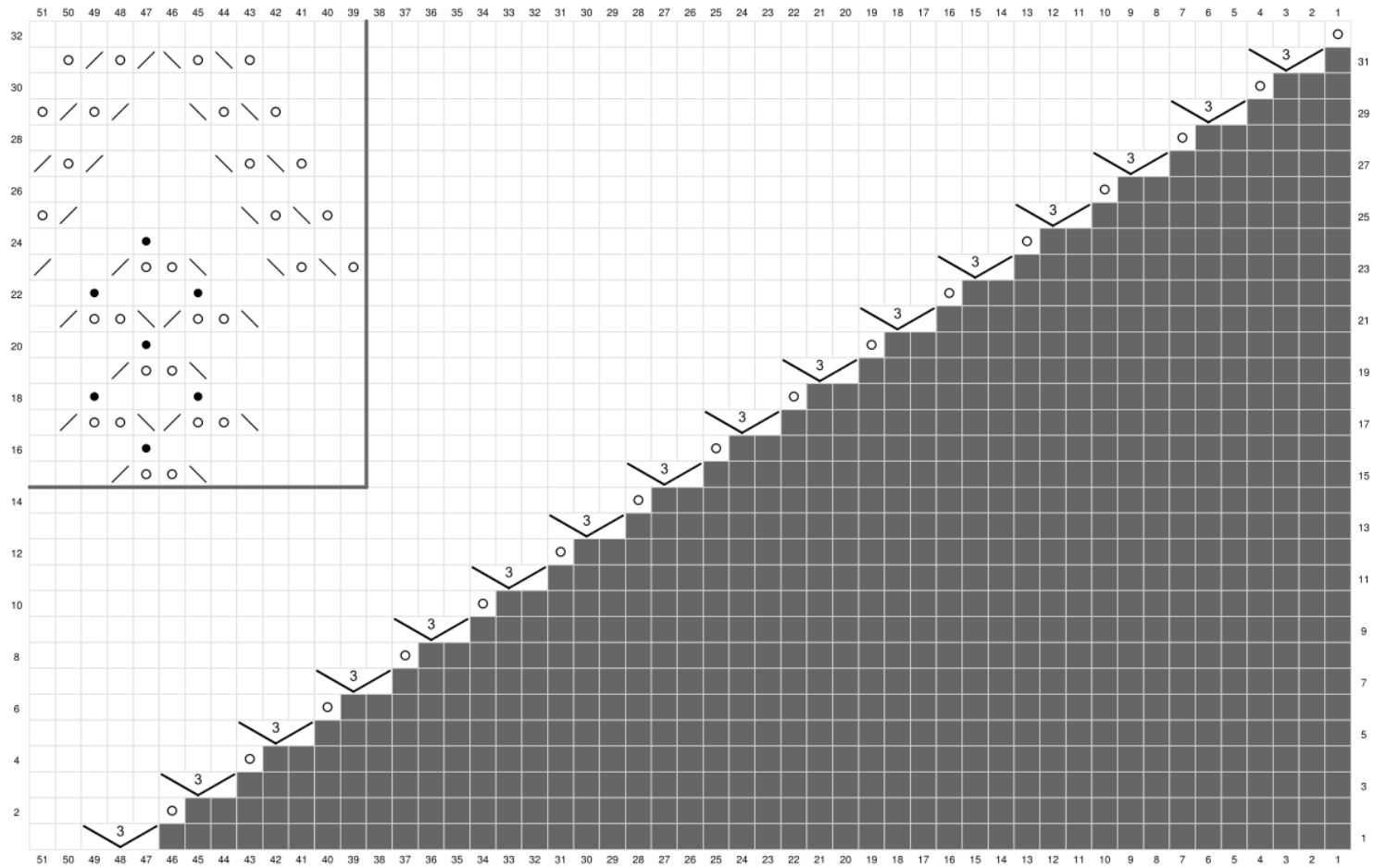
Chart 2 (flowerpots)



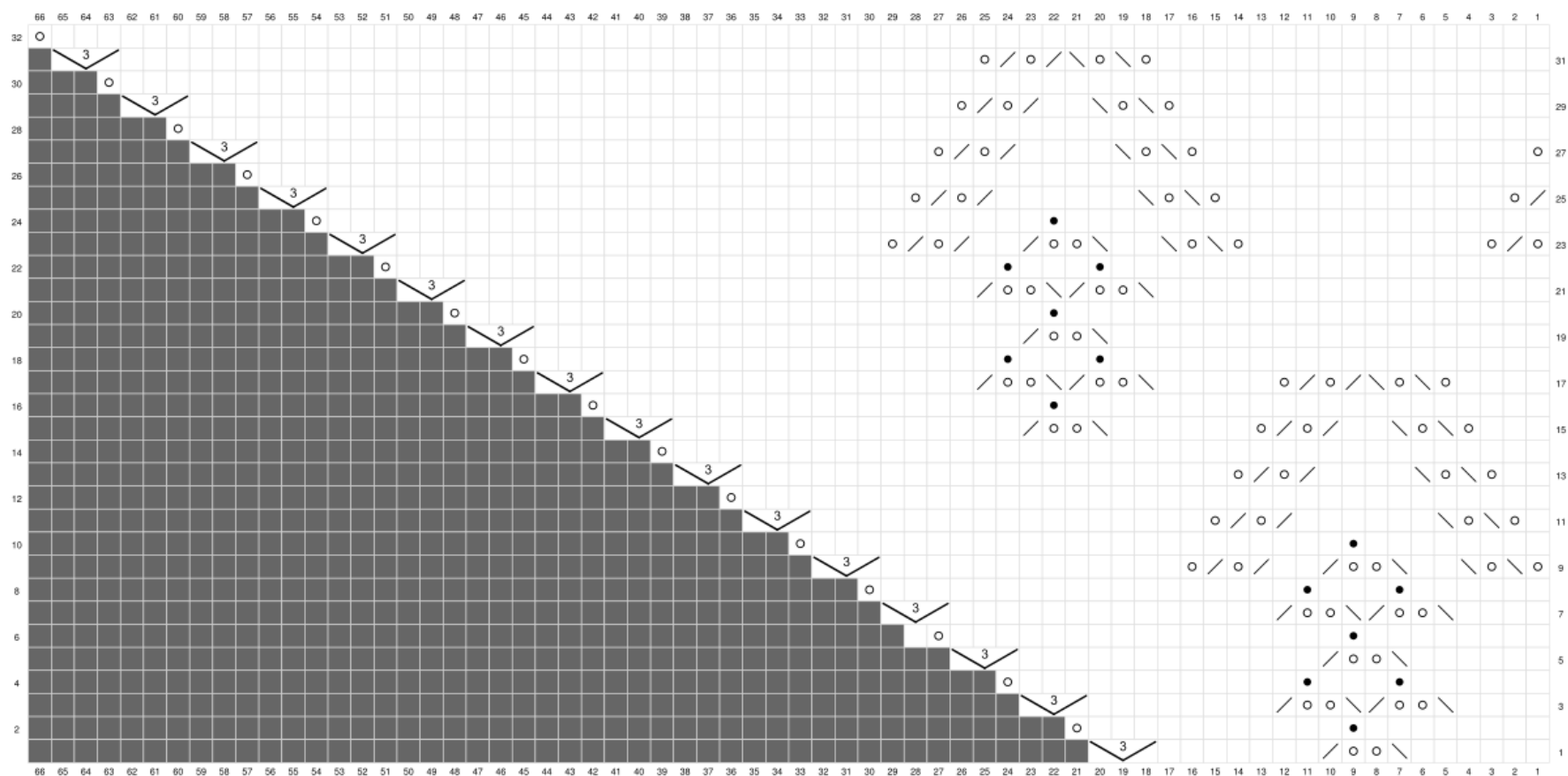
This image is very large and you might see it too small on paper or in the app. I am including copies of the parts and the repeated motif so you can see them larger.

Copying and reproduction in any form of both the content and images of this pattern are prohibited. Redistribution and publication of the content and images without authorization are also prohibited. For any work based on this pattern, it is always necessary to name and give credit to the designer. Using this pattern for commercial purposes is prohibited.

Right part



Left part



Copying and reproduction in any form of both the content and images of this pattern are prohibited. Redistribution and publication of the content and images without authorization are also prohibited. For any work based on this pattern, it is always necessary to name and give credit to the designer. Using this pattern for commercial purposes is prohibited.

Flowerpots motif (detail of chart 2)

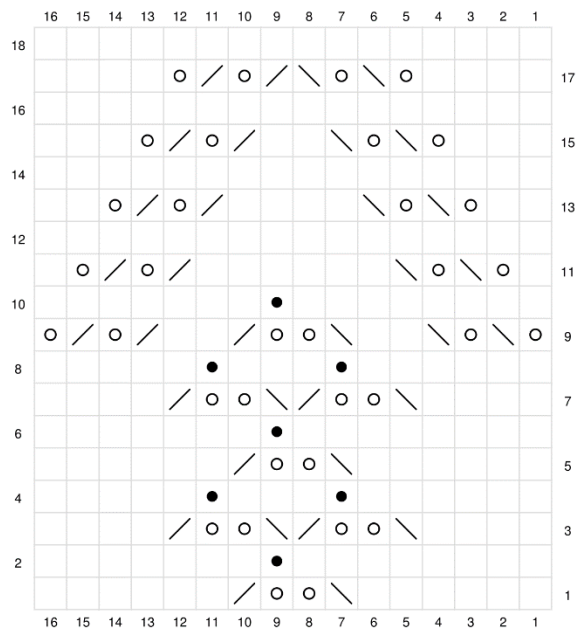


Chart 3 (final ruffle)

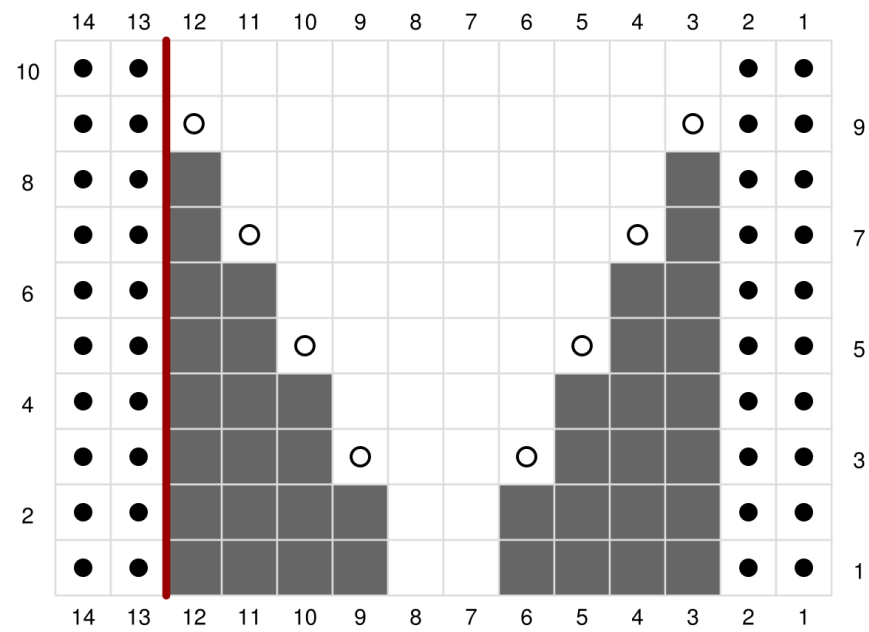


Chart Legends

For all charts: repeat what is included between asterisks () the necessary number of times. Place/slip marker at these points if you need to.*

Chart 1 row by row

Row 1 (RS): kyok, *yo, ssk, k4, yo, ssk, k4*, k1, kyok

Row 2 (WS): yo, p to 1 st before end of chart, yo

Row 3 (RS): kyok, k1, k2tog, yo, *k1, yo, ssk, k4, yo, ssk, k1, k2tog, yo*, k1, yo, ssk, k1, kyok

Row 4 (WS): yo, p to 1 st before end of chart, yo

Row 5 (RS): kyok, k2, yo, k3tog, yo, k1, *k2, yo, ssk, k4, yo, k3tog, yo, k1*, k2, yo, ssk, k3, kyok

Row 6 (WS): yo, p to 1 st before end of chart, yo

Row 7 (RS): kyok, k5, k2tog, yo, k2, *k3, yo, ssk, k3, k2tog, yo, k2*, k3, yo, ssk, k5, kyok

Row 8 (WS): yo, p1, PM, p12, *p12*, p12, yo

Row 9 (RS): kyok, k1, k2tog, yo, k1, yo, ssk, k1, k2tog, yo, k3, *k1, k2tog, yo, k1, yo, ssk, k1, k2tog, yo, k3*, k1, k2tog, yo, k1, yo, ssk, k1, k2tog, yo, k3, SM, k1, kyok

Row 10 (WS): yo, p4, SM, p12, *p12*, p12, PM, p3, yo

Row 11 (RS): kyok, k3, SM, k2tog, yo, k3, yo, k3tog, yo, k4, *k2tog, yo, k3, yo, k3tog, yo, k4*, k2tog, yo, k3, yo, k3tog, yo, k4, SM, k2tog, yo, k2, kyok

Row 12 (WS): yo, p to 1 st before end of chart, yo, SM when you encounter it.

Row 13 (RS): kyok, k5, SM, k2tog, yo, k4, k2tog, yo, k4, *k2tog,

yo, k4, k2tog, yo, k4*, k2tog, yo, k4, k2tog, yo, k4, SM, k2tog, yo, k6, kyok

Row 14 (WS): yo, p to 1 st before end of chart, yo, SM when you encounter it.

Row 15 (RS): kyok, k1, k2tog, yo, k4, k2tog, yo, SM, k1, yo, ssk, k1, k2tog, yo, k4, k2tog, yo, *k1, yo, ssk, k1, k2tog, yo, k4, k2tog, yo*, k1, yo, ssk, k1, k2tog, yo, k4, k2tog, yo, SM, k1, yo, ssk, k1, k2tog, yo, k4, kyok

Row 16 (WS): yo, p1, PM, p to 1 st before end of chart, yo, SM when you encounter it.

Row 17 (RS): kyok, k2, yo, sssk, yo, k4, k2tog, yo, k1, SM, k2, yo, sssk, yo, k4, k2tog, yo, k1, *k2, yo, sssk, yo, k4, k2tog, yo, k1*, k2, yo, sssk, yo, k4, k2tog, yo, k1, SM, k2, yo, sssk, yo, k4, k2tog, yo, k1, SM, k1, kyok

Row 18 (WS): yo, p to 1 st before end of chart, yo, SM when you encounter it.

Row 19 (RS): kyok, k3, SM, k3, yo, ssk, k3, k2tog, yo, k2, SM, k3, yo, ssk, k3, k2tog, yo, k2, *k3, yo, ssk, k3, k2tog, yo, k2*, k3, yo, ssk, k3, k2tog, yo, k2, SM, k3, yo, ssk, k3, k2tog, yo, k2, SM, k4, kyok

Row 20 (WS): yo, p to 1 st before end of chart, yo, SM when you encounter it.

Row 21 (RS): kyok, k1, k2tog, yo, k1, yo, ssk, SM, k4, yo, ssk, k1, k2tog, yo, k1, yo, ssk, SM, k4, yo, ssk, k1, k2tog, yo, k1, yo, ssk, *k4, yo, ssk, k1, k2tog, yo, k1, yo, ssk*, k4, yo, ssk, k1, k2tog, yo, k1, yo, ssk, SM, k4, yo, ssk, k1, k2tog, yo, k1, yo, ssk, SM, k4, yo, ssk, k1, kyok

Row 22 (WS): yo, p to 1 st before end of chart, yo, SM when you encounter it.

Row 23 (RS): kyok, k2, yo, sssk, yo, k3, yo, ssk, SM, k4, yo, sssk, yo, k3, yo, ssk, SM, k4, yo, sssk, yo, k3, yo, k, ssk, *k4, yo, sssk, yo, k3, yo, k, ssk*, k4, yo, sssk, yo, k3, yo,

ssk, SM, k4, yo, sssk, yo, k3, yo, ssk, SM, k4, yo, sssk, yo, k2, kyok

Row 24 (WS): yo, p to 1 st before end of chart, yo, SM when you encounter it.

Chart 2 row by row

Row 1 (RS): kyok, k2, *k6, ssk, yo2, k2tog, k16*, k6, ssk, yo2, k2tog, k7, kyok

Row 2 (WS): yo, p11, k1, p8, *p17, k1, p8*, p5, yo

Row 3 (RS): kyok, k5, *k4, ssk, yo2, k2tog, ssk, yo2, k2tog, k14*, k4, ssk, yo2, k2tog, ssk, yo2, k2tog, k8, kyok

Row 4 (WS): yo, p12, k1, p3, k1, p6, *p15, k1, p3, k1, p6*, p8, yo

Row 5 (RS): kyok, k8, *k6, ssk, yo2, k2tog, k16*, k6, ssk, yo2, k2tog, k13, kyok

Row 6 (WS): yo, p17, k1, p8, *p17, k1, p8*, p11, yo

Row 7 (RS): kyok, k11, *k4, ssk, yo2, k2tog, ssk, yo2, k2tog, k14*, k4, ssk, yo2, k2tog, ssk, yo2, k2tog, k14, kyok

Row 8 (WS): yo, p18, k1, p3, k1, p6, *p15, k1, p3, k1, p6*, p14, yo

Row 9 (RS): kyok, k14, *yo, ssk, yo, ssk, k2, ssk, yo2, k2tog, k2, k2tog, yo, k2tog, yo, k10*, yo, ssk, yo, ssk, k2, ssk, yo2, k2tog, k2, k2tog, yo, k2tog, yo, k13, kyok

Row 10 (WS): yo, p23, k1, p8, *p17, k1, p8*, p17, yo

Row 11 (RS): kyok, k17, *k1, yo, ssk, yo, ssk, k6, k2tog, yo, k2tog, yo, k11*, k1, yo, ssk, yo, ssk, k6, k2tog, yo, k2tog, yo, k17, kyok

Row 12 (WS): yo, p to 1 st before end of chart, yo, SM when you encounter it.

Row 13 (RS): kyok, k20, *k2, yo, ssk, yo, ssk, k4, k2tog, yo, k2tog, yo, k12*, k2, yo, ssk, yo, ssk, k4, k2tog, yo, k2tog, yo, k21, kyok

Row 14 (WS): yo, p to 1 st before end of chart, yo, SM when

you encounter it.

Row 15 (RS): kyok, k10, *k6, ssk, yo2, k2tog, k6, yo, ssk, yo, ssk, k2, k2tog, yo, k2tog, yo*, k6, ssk, yo2, k2tog, k15, kyok

Row 16 (WS): yo, p19, k1, p25, k1, p8, *p17, k1, p8*, p13, yo

Row 17 (RS): kyok, k13, *k4, ssk, yo2, k2tog, ssk, yo2, k2tog, k5, yo, ssk, yo, ssk, k2tog, yo, k2tog, yo, k1*, k4, ssk, yo2, k2tog, ssk, yo2, k2tog, k16, kyok

Row 18 (WS): yo, p20, k1, p3, k1, p21, k1, p3, k1, p6, *p15, k1, p3, k1, p6*, p16, yo

Row 19 (RS): kyok, k16, *k6, ssk, yo2, k2tog, k16*, k6, ssk, yo2, k2tog, k22, ssk, yo2, k2tog, k21, kyok

Row 20 (WS): yo, p25, k1, p25, k1, p8, *p17, k1, p8*, p19, yo

Row 21 (RS): kyok, k19, *k4, ssk, yo2, k2tog, ssk, yo2, k2tog, k14*, k4, k14, ssk, yo2, k2tog, ssk, yo2, k2tog, k22, kyok

Row 22 (WS): yo, p26, k1, p3, k1, p21, k1, p3, k1, p6, *p15, k1, p3, k1, p6*, p22, yo

Row 23 (RS): kyok, k22, *yo, ssk, yo, ssk, k2, ssk, yo2, k2tog, k2, k2tog, yo, k2tog, yo, k10*, yo, ssk, yo, ssk, k2, ssk, yo2, k2tog, k2, k2tog, yo, k2tog, yo, k21, kyok

Row 24 (WS): yo, p31, k1, p25, k1, p8, *p17, k1, p8*, p25, yo

Row 25 (RS): kyok, k25, *k1, yo, ssk, yo, ssk, k6, k2tog, yo, k2tog, yo, k11*, k1, yo, ssk, yo, ssk, k6, k2tog, yo, k2tog, yo, k25, kyok

Row 26 (WS): yo, p to 1 st before end of chart, yo, SM when you encounter it.

Row 27 (RS): kyok, k28, *k2, yo, ssk, yo, ssk, k4, k2tog, yo, k2tog, yo, k12*, k2, yo, ssk, yo, ssk, k4, k2tog, yo, k2tog, yo, k29, kyok

Row 28 (WS): yo, p to 1 st before end of chart, yo, SM when you encounter it.

Row 29 (RS): kyok, k31, *k3, yo, ssk, yo, ssk, k2, k2tog, yo,

k2tog, yo, k13*, k3, yo, ssk, yo, ssk, k2, k2tog, yo, k2tog, yo, k33, kyok

Row 30 (WS): yo, p to 1 st before end of chart, yo, SM when you encounter it.

Row 31 (RS): kyok, k34, *k4, yo, ssk, yo, ssk, k2tog, yo, k2tog, yo, k14*, k4, yo, ssk, yo, ssk, k2tog, yo, k2tog, yo, k37, kyok

Row 32 (WS): yo, p to 1 st before end of chart, yo, SM when you encounter it.

DETAIL OF CHART 2 row by row (flowerpots)

Row 1 (RS): k6, ssk, yo2, k2tog, k6

Row 2 (WS): p7, k, p8

Row 3 (RS): k4, ssk, yo2, k2tog, ssk, yo2, k2tog, k4

Row 4 (WS): p5, k, p3, k, p6

Row 5 (RS): k6, ssk, yo2, k2tog, k6

Row 6 (WS): p7, k, p8

Row 7 (RS): k4, ssk, yo2, k2tog, ssk, yo2, k2tog, k4

Row 8 (WS): p5, k, p3, k, p6

Row 9 (RS): yo, ssk, yo, ssk, k2, ssk, yo2, k2tog, k2, k2tog, yo, k2tog, yo

Row 10 (WS): p7, k, p8

Row 11 (RS): k, yo, ssk, yo, ssk, k6, k2tog, yo, k2tog, yo, k

Row 12 (WS): p16

Row 13 (RS): k2, yo, ssk, yo, ssk, k4, k2tog, yo, k2tog, yo, k2

Row 14 (WS): p16

Row 15 (RS): k3, yo, ssk, yo, ssk, k2, k2tog, yo, k2tog, yo, k3

Row 16 (WS): p16

Row 17 (RS): k4, yo, ssk, yo, ssk, k2tog, yo, k2tog, yo, k4

Row 18 (WS): p16

Chart 3 row by row

Row 1 (RS): *p2, k2*, p2

Row 2 (WS): k2, *p2, k2*

Row 3 (RS): *p2, yo, k2, yo*, p2

Row 4 (WS): k2, *p4, k2*

Row 5 (RS): *p2, yo, k4, yo*, p2

Row 6 (WS): k2, *p6, k2*

Row 7 (RS): *p2, yo, k6, yo*, p2

Row 8 (WS): k2, *p8, k2*

Row 9 (RS): *p2, yo, k8, yo*, p2

Row 10 (WS): k2, *p10, k2*

The Mayo en Córdoba Shawl has been carefully edited and tested, but if you have any problems, you can write to me at

nosolopuntopatrones@gmail.com

The Mayo en Córdoba Shawl and all designs by @nosolopunto are for personal use only and their sale or distribution without permission is not allowed. Please respect the work of designers.

My thanks to my dear testers Ana (@anaexpuru), Elena (@epochknitting), Iratxe (@lady_wanderlust), Merche (@mefaltanhoras68), Mireia (@mireia.olmo), Mónica (@mockaax), Samantha (@comcus_sam), Sonia (@soniamorcuende) and Yoli (@shandril4).

Mayo en Córdoba Shawl by Esther Lara, @nosolopunto



Other patterns by Esther Lara you might like:

LACERÍA SHAWL



ESPERANZA SHAWL



My links:



INSTAGRAM



YOUTUBE



RAVELRY



TELEGRAM

Copying and reproduction in any form of both the content and images of this pattern are prohibited. Redistribution and publication of the content and images without authorization are also prohibited. For any work based on this pattern, it is always necessary to name and give credit to the designer. Using this pattern for commercial purposes is prohibited.