

Lynne hat

(Blue and white hat with ear flaps)



This is an off-white and blue colored, Fair Isle designed ear flaps hat, with 3 pompons.

The directions below are for an average adult size. The hat size can be adjusted by yarn and needle size.

Skills needed: Cast on, knit, purl, increase, decrease, bind off, Fair Isle knitting technic

Yarn used: 80% acrylic 20% wool , medium thick (4) yarn, 3oz (85g)
197yd (180m) (mine is Wool-Ease, LionBrand Yarns)

1 ball off-white and 1/3 ball blue

Gauge: 18s *24r = 4in* 4in (10cm*10cm)

Needles: 5mm/ 8 US circular, or 5 double pointed needles

Stitch markers: 4, optional and highly recommended

Pompon maker

Crochet hook or tapestry needle

Abbreviations:

st: stitches

k: knit,

p: purl

inc: increase 1 stitch

dec: decrease

k2tog: knit 2 stitches together

This pattern starts with earflaps. The two earflaps are the same. We're going to knit them one by one. Than we're going to cast on stitches for forehead (front) and for the back (neck) between earflaps, and knit all stitches around.

We're going to work on the right side only, using knit and purl stitches. (after the border no purls)

First use the written direction to knit earflaps and border, than use the chart, to knit Fair Isle design, than back to the written instruction from row 33rd till 37th.

Cast on 4 stitches for first earflap. Knit right and left side. (garter stitch)

Row1: knit 4

Row2: k1, inc, k2, inc, k1 (6 st)

Row3: knit all 6

Row4: k1, inc, k4, inc, k1 (8 st)

Row5: knit all 8

Repeat increases until you have 24 stitches on the needle (20 rows)

Keep this earflap on the needle and knit other one too!

When both earflaps finished, cast on stitches for forehead and neck.
There is 48 stitches on the needle now.

Cast on 30 stitches for forehead , 10 stitches for neck. You got 88 stitches on the needle, join in the round.

(Be careful with sequence: earflap 24, forehead 30, earflap 24, neck 10) :)

You going to knit all around now. This border is same like earflaps, garter stitches.

Row1: knit

Row2: purl

Repeat Row1 and Row 2, 5 (five) times. (you got the border now)

Put a stitch marker to the center of the neck. This is the point, where you will start new rows. Count 22 stitches, place and other stitch marker and

repeat 3 more times. Replace stitch markers to the next row after you finish one row.

After border, knit 2 rows with off-white yarn, then start the chart with blue yarn from the first row. Work from right to left.

Repeat the chart from 3rd stitch until 24th stitch, 4 (four) times. There are 22 stitches between red lines.

Knit from the first row until 32nd row once.

Row33: k2tog, k4, k2tog, k2tog, k5, k2tog, k2tog, k5, k2tog, k2tog, k5, k2tog, k2tog, k5, k2tog, k2tog, k5, k2tog, k2tog, k5, k2tog, k2tog, k4, k2tog

Row34: knit all stitches

Row35: k2tog, k2, k2tog, *k2tog, k3, k2tog * repeat 8 times, k2tog, k2, k2tog

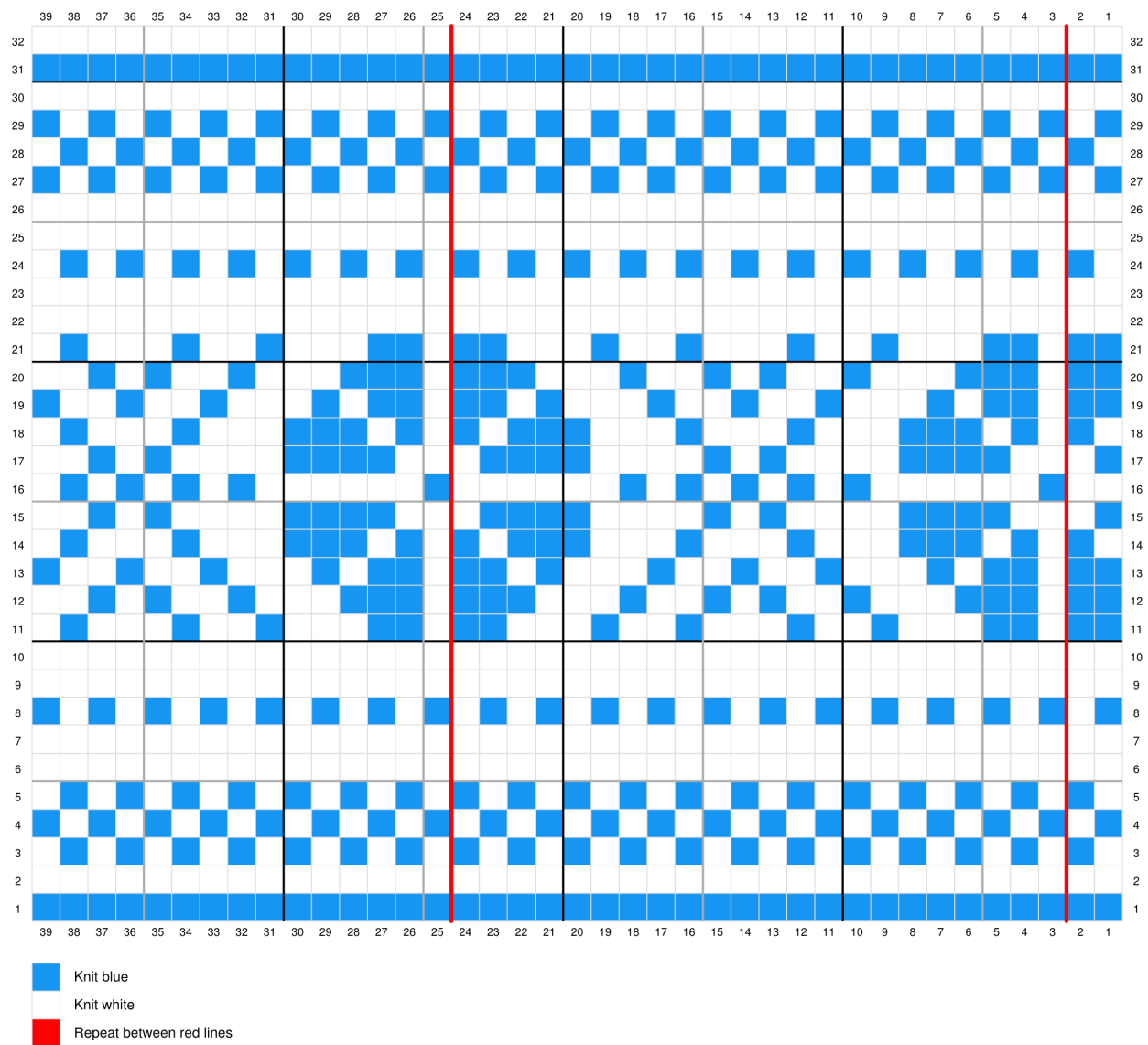
Row36: knit all stitches

Row37: k2tog, k2tog, *k2tog, k, k2tog* repeat 8 times, k2tog, k2tog

Cut yarn, leaving a tail of about 5-6". Weave through remaining stitches, removing stitches from knitting needle. Draw up tightly and sew up seam. Weave in loose ends.

Make 1 blue and 2 off-white pompons.

Sew up the blue one to the top of the hat. Crochet or braid a 3 -4 inch long string for both off-white pompon. Weave them to the earflaps.



Designed with Stitch Fiddle
www.StitchFiddle.com