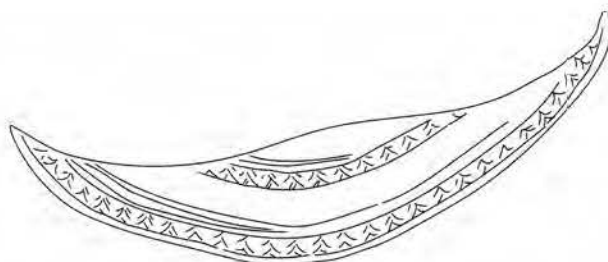




03 LIMELIGHT



FINISHED MEASUREMENTS

WIDTH: 75.5" / 192 cm.

DEPTH: 16.5" / 42 cm.

MATERIALS

YARN: 1 skein of Merino Singles Fingering by Black Elephant (100% SW merino, 394 yds / 360 m – 100 g), colourway Nostalgia as MC. 1 skein of Branwen 4-Ply by Triskelion (50% Falkland merino, 50% silk, 541 yds / 495 m – 100 g), colourway Frea as CC. Or approx. 788 yds / 720 m of fingering weight yarn: 394 yds / 360 m of MC, 394 yds / 360 m of CC.

NEEDLES: US 5 / 3.75 mm circular needles.

GAUGE

19 sts x 43 rows to 4" / 10 cm in Garter St, after blocking.

SPECIAL TECHNIQUES

STRETCHY BIND-OFF: Knit the first 2 sts on the LHN, slip the sts back onto the LHN and k2tog through the back loop. Rep (k1, slip the 2 sts back onto the LHN and k2tog through the back loop) until you have one loop left on the RHN. Knot the loop as you would in a standard knitted bind-off.

DIRECTIONS

SECTION 1

With MC and using the Long-Tail CO method, CO 3 sts. K 12 rows. Next, do not turn work to WS but turn it 90 degrees and pick up and k 6 sts along the long edge of the Garter St tab. Then, turn work 90 degrees again and pick up and k 3 sts from the CO edge. (12 sts)

ROW 1 (RS): K2, yo, k1, m1l, k1, m1l, k to last 4 sts, m1r, k1, m1r, k1, yo, k2. (6 sts inc'd)

ROW 2 (WS): K2, drop the yo, k1, m1l, k to last 4 sts, m1r, k1, drop the yo, k2.

ROW 3: K2, yo, k1, m1l, k to last 3 sts, m1r, k1, yo, k2. (4 sts inc'd)

ROW 4: Rep row 2.

Rep rows 1–4, 10 more times. 122 sts.

SECTION 2

ROW 1 (RS): With CC, k2, yo, k1, m1l, k1, m1l, k98, w&t. (125 sts)

ROW 2 (WS): K to last 4 sts, m1r, k1, drop the yo, k2.

ROW 3: With MC, k2, yo, k1, m1l, k to last 3 sts, m1r, k1, yo, k2. (129 sts)

ROW 4: K2, drop the yo, k1, m1l, k to last 4 sts, m1r, k1, drop the yo, k2.

ROW 5: With CC, k2, yo, k1, m1l, k1, m1l, k74, w&t. (132 sts)

ROW 6: Rep row 2.

ROW 7: Rep row 3. (136 sts)

ROW 8: Rep row 4.

ROW 9: With CC, k2, yo, k1, m1l, k1, m1l, k50, w&t. (139 sts)

ROW 10: Rep row 2.

ROW 11: Rep row 3. (143 sts)

ROW 12: Rep row 4.

ROW 13: With CC, k2, yo, k1, m1l, k1, m1l, k26, w&t. (146 sts)

ROW 14: Rep row 2.

ROW 15: Rep row 3. (150 sts)

ROW 16: Rep row 4.

You can break the yarns between sections or just carry the other colour along by knitting the three edge sts with both yarns.

SECTION 3

This section is worked with CC. Work the Lace Chart A once, then rep rows 1–8 once more. 200 sts.

SECTION 4

This section is worked with MC.

ROW 1 (RS): With MC, k2, yo, k1, m1l, k1, m1l, k to last 4 sts, m1r, k1, m1r, k1, yo, k2. (6 sts inc'd)

ROW 2 (WS): K2, drop the yo, k1, m1l, k to last 4 sts, m1r, k1, drop the yo, k2.

ROW 3: K2, yo, k1, m1l, k to last 3 sts, m1r, k1, yo, k2. (4 sts inc'd)

ROW 4: Rep row 2.

Rep rows 1–4, 10 more times. 310 sts.

SECTION 5

ROW 1 (RS): With CC, k2, yo, k1, m1l, k1, m1l, k271, w&t. (313 sts)

ROW 2 (WS): K to last 4 sts, m1r, k1, drop the yo, k2.

ROW 3: With MC, k2, yo, k1, m1l, k to last 3 sts, m1r, k1, yo, k2. (317 sts)

ROW 4: K2, drop the yo, k1, m1l, k to last 4 sts, m1r, k1, drop the yo, k2.

ROW 5: With CC, k2, yo, k1, m1l, k1, m1l, k232, w&t. (320 sts)

ROW 6: Rep row 2.

ROW 7: Rep row 3. (324 sts)

ROW 8: Rep row 4.

ROW 9: With CC, k2, yo, k1, m1l, k1, m1l, k193, w&t. (327 sts)

ROW 10: Rep row 2.

ROW 11: Rep row 3. (331 sts)

ROW 12: Rep row 4.

ROW 13: With CC, k2, yo, k1, m1l, k1, m1l, k154, w&t. (334 sts)

ROW 14: Rep row 2.

ROW 15: Rep row 3. (338 sts)

ROW 16: Rep row 4.

ROW 17: With CC, k2, yo, k1, m1l, k1, m1l, k115, w&t. (341 sts)

ROW 18: Rep row 2.

ROW 19: Rep row 3. (345 sts)

ROW 20: Rep row 4.

ROW 21: With CC, k2, yo, k1, m1l, k1, m1l, k76, w&t. (348 sts)

ROW 22: Rep row 2.

ROW 23: Rep row 3. (352 sts)

ROW 24: Rep row 4.

ROW 25: With CC, k2, yo, k1, m1l, k1, m1l, k37, w&t. (355 sts)

ROW 26: Rep row 2.

ROW 27: Rep row 3. (359 sts)

ROW 28: Rep row 4.

Break MC.

SECTION 6

This section is worked with CC. Work Lace Chart B twice. 419 sts.

SECTION 7

This section is worked with CC.

ROW 1 (RS): With CC, k2, yo, k1, m1l, k1, m1l, k to last 4 sts, m1r, k1, m1r, k1, yo, k2. (6 sts inc'd)

ROW 2 (WS): K2, drop the yo, k1, m1l, k to last 4 sts, m1r, k1, drop the yo, k2.

ROW 3: K2, yo, k1, m1l, k to last 3 sts, m1r, k1, yo, k2. (4 sts inc'd)

ROW 4: Rep row 2.

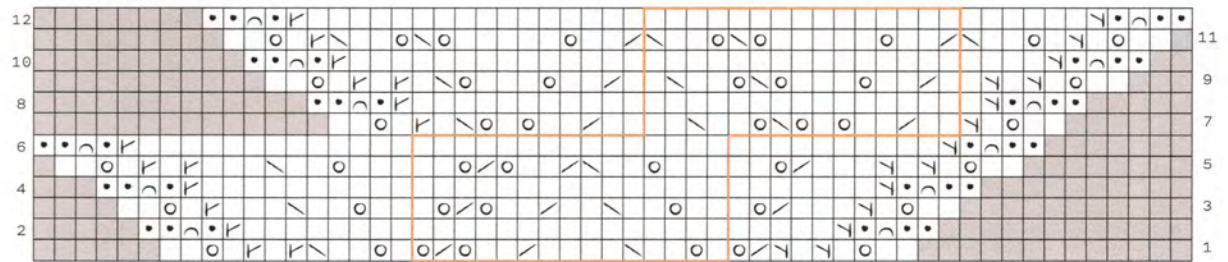
Rep rows 1–4 twice more. 449 sts.

BO using a stretchy bind-off method.

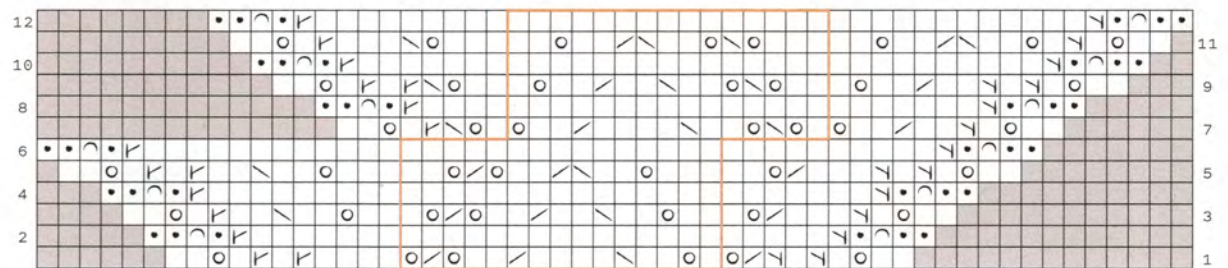
FINISHING

Weave in ends. Wet block to measurements.

LACE A



LACE B



	RS: KNIT / WS: PURL
	RS: PURL / WS: KNIT
	RS: M1L / WS: M1R
	RS: M1R / WS: M1L
	K2TOG
	SSK
	Y0
	DROP Y0
	REPEAT
	NO STITCH

