

# LILIFLORA MITTENS

by Joyce Fassbender



55875

## FINISHED MEASUREMENTS

10" long x 8" circumference

## YARN

Knit Picks Chroma Twist Fingering  
(70% SuperwashWool, 30% Nylon; 437  
yards/100g): MC: Get Your Neon 27269,  
1 ball

Knit Picks Stroll Fingering (75%  
Superwash Merino, 25% Nylon; 231/50g):  
CC: Black 23701, 1 ball

## NEEDLES

US 2 (2.75mm) DPNs or two 24" circular  
needles for two circulars technique, or  
one 32" or longer circular needle for  
Magic Loop technique, or size to obtain  
gauge

## NOTIONS

Yarn Needle  
Stitch Markers  
Scrap yarn

## GAUGE

36 sts and 40 rows = 4" in stranded St st  
in the round, blocked

# Liliiflora Mittens

## Notes:

These mittens are worked in stranded knitting from the cuff up. The cuff is worked first, then the body. The thumb is worked after the body has been completed.

## DIRECTIONS

Cast on 72 sts in MC using long tail cast on. Join in the round, taking care not to twist.

### Cuff

Rnd 1: \*K2, P2,\* repeat \* to \* 18 times.

Repeat rnd 1 until piece measures 2 inches from cast on edge.

### Hand

Attach CC without breaking MC.

Begin working Chart 1.

Work rnds 1 – 22.

Work rnd 23 as indicated in thumb instructions below.

Work rnds 24 – 80.

At end of chart 1, you should have 10sts remaining on needles.

Using MC, graft together remaining sts.

### Thumb

#### Right Mitten

On rnd 23: Work one stitch. Work the next 13 sts using scrap yarn (indicated by the first red box on Chart 1). Work remaining sts of rnd as indicated on chart.

#### Left Mitten

On rnd 23: Work 22 sts. Work the next 13 stitches using scrap yarn (indicated by the second red box on Chart 1). Work remaining stitches of rnd as indicated on chart.

#### Both mittens

Carefully place the 13 stitches in the rnd directly below and the 13 stitches in the rnd directly above the waste yarn onto needles. Remove waste yarn. You should now have 26 live stitches on the needles.

With palm of mitten facing you, attach yarn to first stitch on the right.

Work rnds 1 – 25 of Chart 2 in the round.

After rnd 25, break yarn and run it through the remaining stitches.

### Finishing

Weave in ends and wash. Block and lay flat to dry.



Chart 1

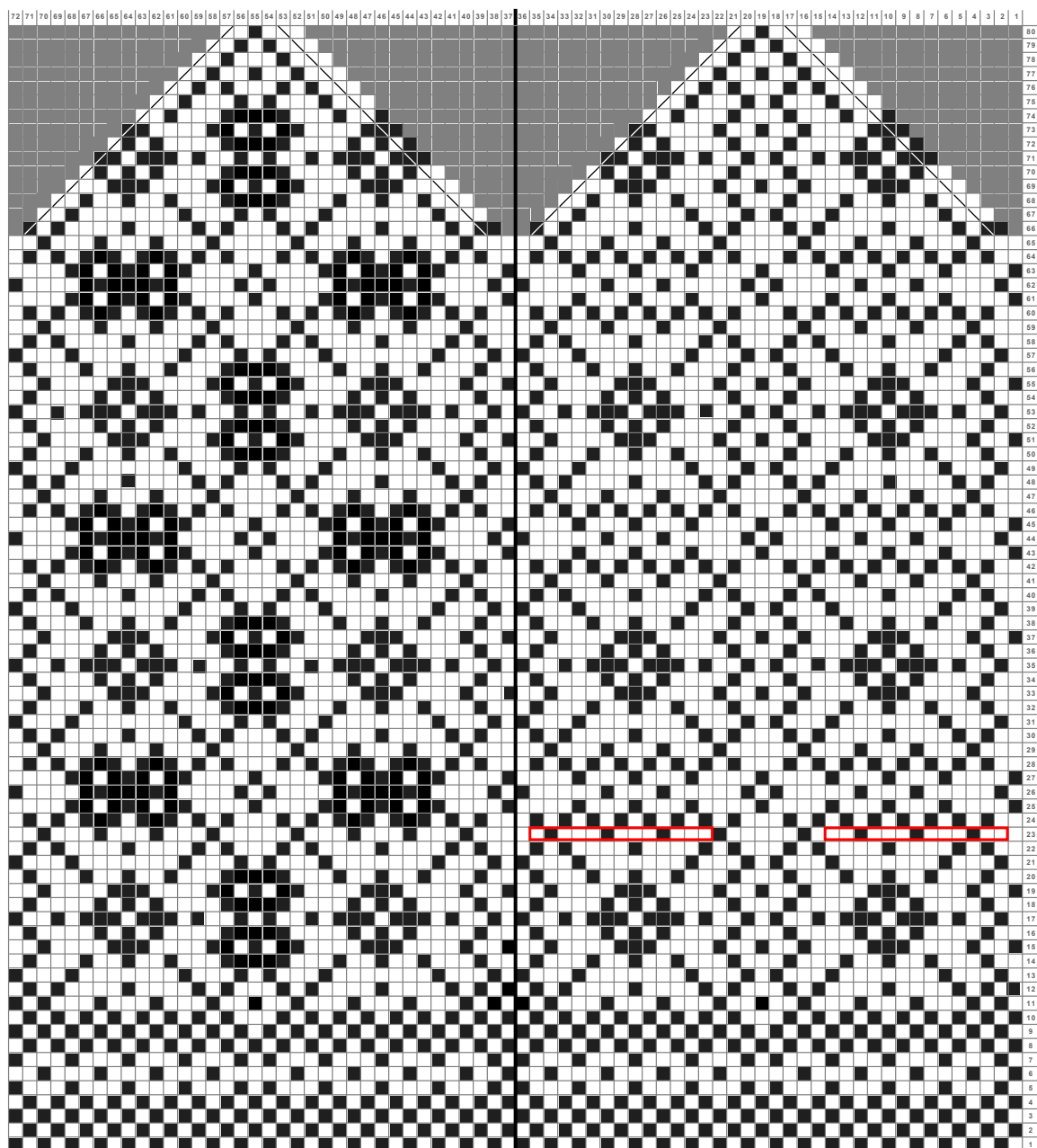
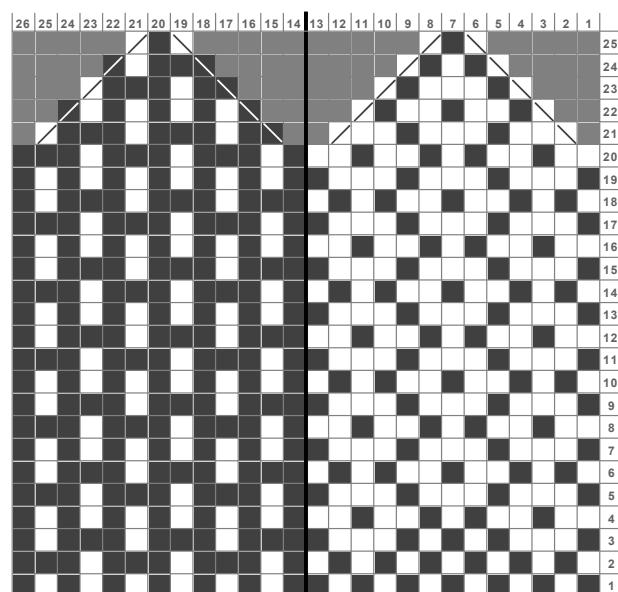


Chart 2



Legend

- ☐ knit
- ☐ knit stitch
- ☐ No Stitch
- ☐ Placeholder - No stitch made.
- ☒ ssk
- ☒ Slip one stitch as if to knit, Slip another stitch as if to knit. Insert left-hand needle into front of these 2 stitches and knit them together
- ☒ k2tog
- ☒ Knit two stitches together as one stitch
- ☐ MC
- ☒ CC
- ☐ Thumb placement





### About the Designer

Joyce Fassbender is a biology lecturer in New York City. She recently got a puppy that she's training to be a good knitting dog, but not to knit because, sadly, it can't hold the needles. When not playing with the puppy, she's obsessing over shawls and lace. For pattern support, please contact [joycef2@gmail.com](mailto:joycef2@gmail.com)

<b>Abbreviations</b>	<b>M</b>	marker		stitch	<b>TBL</b>	through back loop
<b>BO</b>	bind off	<b>M1</b>	make one stitch	<b>RH</b>	<b>TFL</b>	through front loop
<b>cn</b>	cable needle	<b>M1L</b>	make one left-leaning stitch	<b>rnd(s)</b>	<b>tog</b>	together
<b>CC</b>	contrast color			<b>RS</b>	<b>W&amp;T</b>	wrap & turn (see specific instructions in pattern)
<b>CDD</b>	Centered double dec	<b>M1R</b>	make one right-leaning stitch	<b>Sk</b>		
<b>CO</b>	cast on			<b>Sk2p</b>		
<b>cont</b>	continue	<b>MC</b>	main color		<b>WE</b>	work even
<b>dec</b>	decrease(es)	<b>P</b>	purl		<b>WS</b>	wrong side
<b>DPN(s)</b>	double pointed needle(s)	<b>P2tog</b>	purl 2 sts together	<b>SKP</b>	<b>WYIB</b>	with yarn in back
<b>EOR</b>	every other row	<b>PM</b>	place marker	<b>SL</b>	<b>WYIF</b>	with yarn in front
<b>inc</b>	increase	<b>PFB</b>	purl into the front and back of stitch	<b>SM</b>	<b>YO</b>	yarn over
<b>K</b>	knit			<b>SSK</b>		
<b>K2tog</b>	knit two sts together	<b>PSSO</b>	pass slipped stitch over	<b>SSP</b>		
<b>KFB</b>	knit into the front and back of stitch	<b>PU</b>	pick up			
<b>K-wise</b>	knitwise	<b>P-wise</b>	purlwise	<b>SSSK</b>		
<b>LH</b>	left hand	<b>rep</b>	repeat			
		<b>Rev St st</b>	reverse stockinette	<b>St st</b>		
				<b>sts</b>		