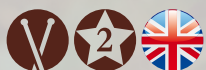


ROWAN

LATTICE SCARF

By Martin Storey
ZB276-00005-UK



© Copyright Rowan Yarns, 2020.



LATTICE SCARF

by Martin Storey

Craft



Skill Level



ZB276-00005-UK



YARN

Alpaca Soft DK

A Rainy Day 210 6 x 50gm
B Hunter Green 214 5 x 50gm

More Yarn
Information

on knitrowan.com

NEEDLES

Set of 4 double-pointed 3¼mm (no 10) (US 3) needles, or 3¼mm (no 10) (US 3) circular needle no more than 40 cm (16 in) long
Set of 4 double-pointed 4mm (no 8) (US 6) needles, or 4mm (no 8) (US 6) circular needle no more than 40 cm (16 in) long

TENSION

28 sts and 25 rows to 10 cm measured over 2-colour rib using 3¼mm (US 3) needles. 25 sts and 26 rows to 10 cm measured over fairisle patt using 4mm (US 6) needles.

FINISHED SIZE

Completed scarf is 21.5 cm (8½ in) wide when laid flat and approx. 208 cm (82 in) long.

SCARF

Using set of 4 double-pointed 3¼mm (US 3) needles, or 3¼mm (US 3) circular needle, and yarn A, cast on 108 sts.

Place stitch marker on needle to denote beg and end of rounds. If using double-pointed needles, distribute sts evenly over 3 of the 4 needles and, using 4th needle and taking care not to twist cast-on edge, work in rounds as folls, stranding yarn not in use across WS of work:

Round 1: *K1 in A, P1 in B, rep from * to end.

This round forms 2-colour rib.

Work in 2-colour rib for a further 9 rounds.

Change to double-pointed 4mm (US 6) needles, or 4mm (US 6) circular needle.

Using the **fairisle** technique as described on the information page, repeating the 18-st patt repeat 6 times across each round, cont in patt from charts, which are worked entirely in st st beg with a K round, as folls:

Work rounds 1 to 98 of chart A.

Now work the 18-round repeat from round 81 to 98 a further 19 times. (Work should measure approx. 173 cm.)

Work rounds 1 to 81 of chart B.

Change to double-pointed 3¼mm (US 3) needles, or 3¼mm (US 3) circular needle.

Work in 2-colour rib as in round 1 for 10 rounds.

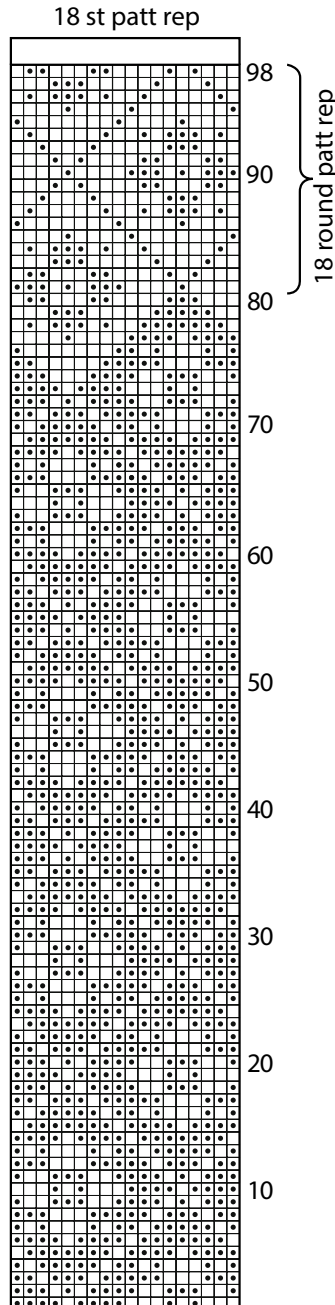
Cast off using yarn A.

MAKING UP

Press as described on the information page.

See information page for finishing instructions.

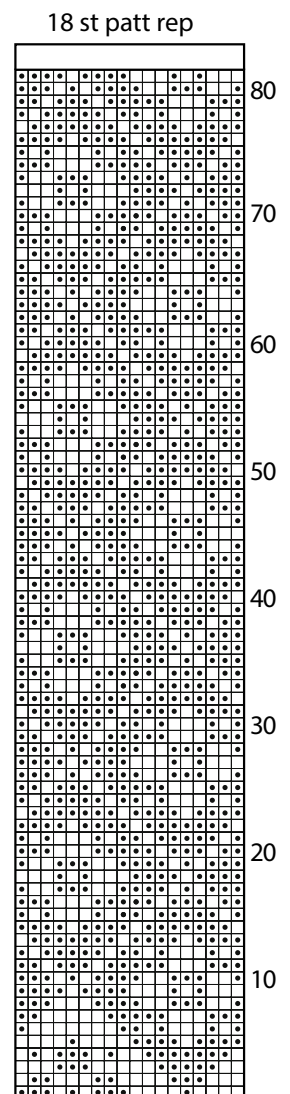
Chart A



Key

□ A
■ B

Chart B



Information
Pages