

Latte Art



Notes

Latte Art is a colourwork cowl. Started with a provisional cast-on, it is knitted in the round until desired length, then grafted at the end in a moebius shape. Its simple pattern, with very short repeats and no floats to catch, makes it a rewarding project suitable for colourwork beginners, with multiple colour possibilities and leftovers use.

Use the hashtag #latteartcowl to share your project.

Pattern, pictures and notes © Audrey Borrego. This pattern is for personal use only.

Yarn :

You will need a minimum of two colours of sport weight yarn in the following amounts :

MC : 230 meters – 250 yards

CC : 270 meters – 295 yards

The sample used 3 different sets of MC and CC, switching after each third of the cowl's length.

Sample used Filcolana Pernilla (175 m – 190 yds / 50 g) in 824 (MC1), 818 (CC1), 101 (MC2), 817 (CC2), 826 (MC3) and 829 (CC3).

Needles :

3.5 mm (US 4) circular needles with appropriate cable length to knit in the round (40 cm – 16" maximum) or magic loop
or size required to get gauge

Gauge :

32 sts x 35 rnds per 10 cm – 4" in stranded knitting after blocking.

Note that a different gauge will affect size and yarn usage.

Size :

Adjustable.

80 cm – 31 1/2" circumference

17 cm – 6 3/4" wide

Notions :

Stitch markers, scissors and tapestry needle

Spare needles for grafting

Locking stitch markers

Row counter recommended

Techniques used :

Turkish provisional cast-on

Two colours stranded knitting in the round with no floats to catch

Kitchener stitch

Pattern includes charted instructions

Abbreviations :

- st(s) : stitch(es)
- rnd : round
- BOR : beginning of round
- m : marker / PM : place marker
- MC : main colour
- CC : contrast colour

Reading Charts :

When knitting in the round, always read the Chart from right to left.

Colourwork :

You do not need to catch floats in this design.

Colour dominance : CC will form the motifs while MC will be the background colour. To have consistent colour dominance : hold CC to the left and always carry it under MC without twisting the strands.

Cast-on and set-up

Using MC, provisionally cast-on 108 sts using your preferred provisional cast-on method.

I recommend the [Turkish cast-on](#), casting-on two sets of 108 sts by wrapping the yarn 108 times around two needles.

(Turkish Cast-on tutorial by Andrea Mowry)

To change the cowl's width, cast-on a multiple of 6 sts.

Join CC and knit accross the top 108 sts.

Leave the lower set of 108 sts on hold on scrap yarn or a spare cable.

Join to work in the rnd and PM for BOR.

PM also after 54 sts to mark the side of the cowl.

Cowl

Work the Chart 18 times per rnd until the cowl measures about 80 cm – 31 1/2" from cast-on or desired length.

Colour changes in MC and / or CC will look better when done after a rnd 5, 10, 15 or 21 to 25.

End the cowl after a rnd 24 of the Chart.

Cut yarns, leaving a CC tail about six times the width of the cowl, remove markers and place sts on hold.

Finishing

Weave in all ends on the inside and gently block the cowl.

Once completely dry, place the end sts back on the needles. Mark BOR and side (after 54 sts) of the cowl with locking st markers. Your needles are coming out of the BOR point of the cowl.

Unravel the provisional cast-on and place the sts back on another set of needles, marking BOR and side as well. Slip 54 sts so that the needles are coming out of the side point of the cowl, and not from the BOR.

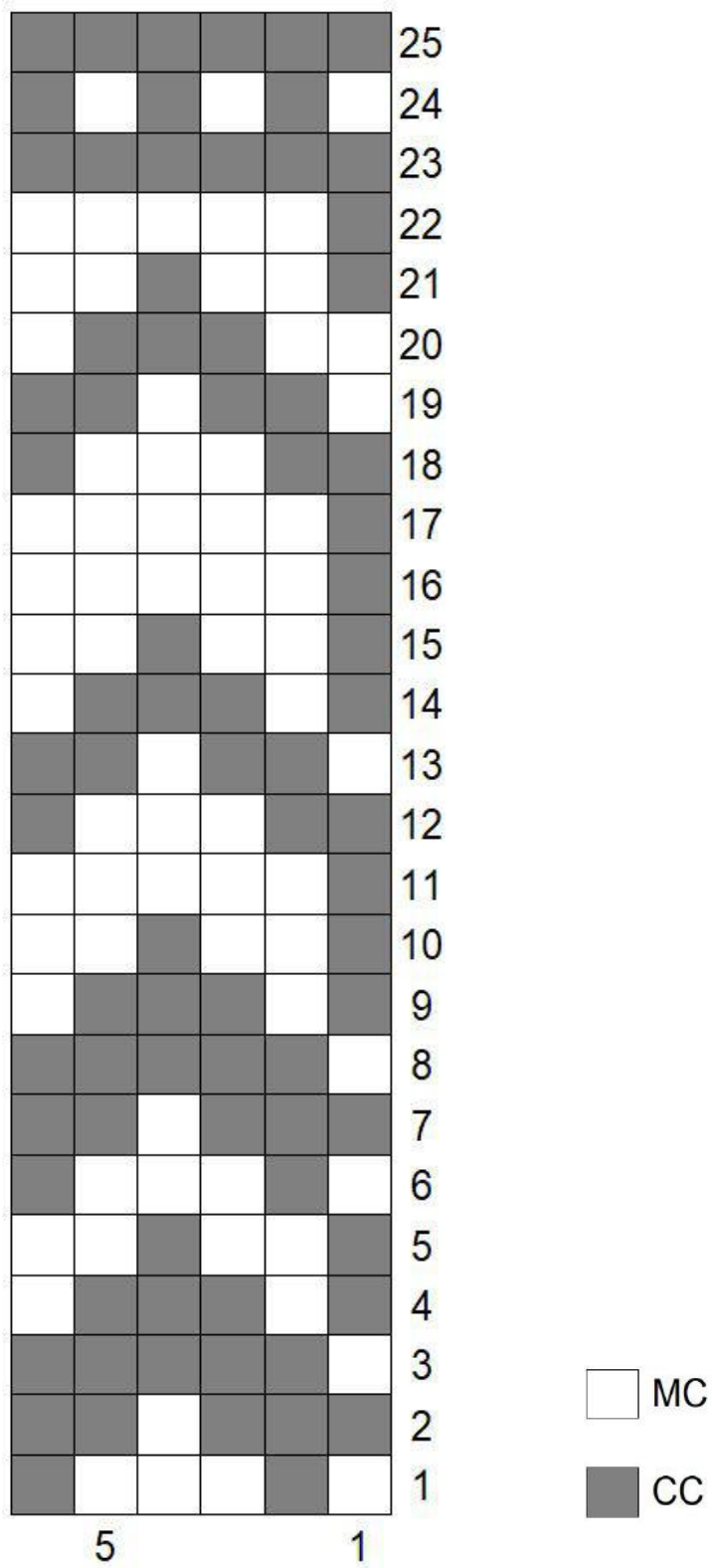
Twist the cowl once to create a moebius (infinite) shape, aligning the BOR of the end sts with the side of the cast-on sts.

Using the long CC tail, graft the beginning and end sts together to close the tube using [kitchener stitch](#).

(Kitchener stitch tutorial by Very Pink Knits)

Weave the CC ends from the grafting inside the cowl.

CHART

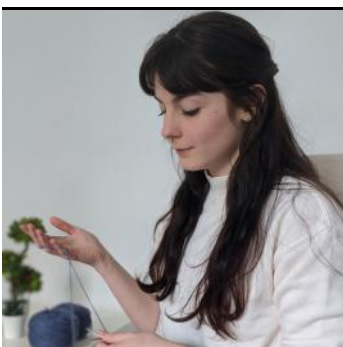


Thank you

for choosing a Yarnflakes pattern !

I hope you enjoyed your project and will love the finished piece. If you have any questions or suggestions, please contact me on Ravelry (Yarnflakes).

I love to see you knit my designs. If you want to share pictures of your progress you can join me on my Ravelry group : www.ravelry.com/discuss/yarnflakes and tag me on Instagram @yarnflakes.



Find more designs :
www.ravelry.com/designers/audrey-borrego
www.payhip.com/yarnflakes

Patreon Yarnflakes

Instagram @yarnflakes
Ravelry @Yarnflakes