

Lateen Shawl

by Irina Anikeeva



FINISHED MEASUREMENTS

68"/173 cm wingspan.

30"/76 cm height at center spine.

Measurements are taken after blocking.

YARN

Approximately 830 yds/759 m of DK weight yarn: 460 yds/421 m of MC and 370 yds/338 m of CC.

Main Color (MC): 2 skeins of Baah Yarn Sonoma (100% Superwash Merino, 234 yds/214 m in 100 g); Fog.

Contrast Color (CC): 2 skeins of Baah Yarn Sonoma (100% Superwash Merino, 234 yds/214 m in 100 gr); Blue Winged Teal.

NEEDLES

Size US 7/4.5 mm circular needle 32"/80 cm long, or size to obtain gauge.

While gauge is not critical for this project, different gauge can affect the size and overall yardage.

NOTIONS

Stitch markers, waste yarn, crochet hook 7/7 mm for Provisional Cast On, tapestry needle.

GAUGE

15 stitches and 34 rows = 4"/10 cm on size US 7/4.5 mm needles in Garter stitch, after blocking.

CONSTRUCTION NOTES

- This shawl is worked from the top edge down.
- Knitters may consider placing markers between the chart repetitions.
- Circular needle is used to accommodate the large number of stitches.

STITCH GUIDE

Crochet Chain Provisional Cast On

Using scrap yarn and crochet hook, chain the number of stitches to cast on, plus a few extra. Cut a tail and pull the tail through the last chain. With knitting needle and yarn, pick up and knit the stated number of stitches through the "purl bumps" on the back of the chain. To remove scrap chain, when instructed, pull out the tail from the last crochet st. Gently and slowly pull on the tail to unravel the crochet stitches, carefully placing each released knit st on a needle.

Glossary

K	Knit	RS	Right Side
K2TOG	Knit 2 stitches together – 1 stitch decreased.	Sl m	Slip marker
M1L	(Make one left): with left-hand needle tip, pick up the thread between stitches from front to back. Knit lifted loop through the back loop.	SSK	Slip 1 stitch knitwise, slip 1 stitch knitwise, knit these 2 slipped stitches together through back loop – 1 stitch decreased.
M1R	(Make one right): with left-hand needle tip, pick up the thread between stitches from back to front. Knit lifted loop through the front loop.	WS	Wrong side
P	Purl	YO	Yarn over
PM	Place marker		

For comments or questions regarding this pattern, please contact me at irmiandesign@gmail.com

You can also find me on Ravelry: [Irina Anikeeva](#)

Follow me on Instagram [@irmiandesign](#) or Facebook: [IrmianDesign](#)

Directions

Body

With waste yarn and Crochet Chain Provisional method (see Stitch Guide), cast on 3 stitches. Join CC and knit all stitches in the next 6 rows. Keeping the work on the right needle, rotate it 90 degrees clockwise and pick up and knit 3 stitches along the edge of the tab. Turn work 90 degrees clockwise again, carefully unravel the waste yarn from Provisional Cast On, place the 3 cast-on stitches on spare needle and knit them – 9 stitches.

Next Row (WS): K3, [PM, k1] 3 times, PM, k3.

Garter Row 1 (RS): K3, sl m, M1L, knit to next marker, M1R, sl m, k1, sl m, M1L, knit to next marker, M1R, sl m, k3 – 4 stitches increased.

Garter Row 2 (WS): Knit all stitches.

Repeat last 2 rows 11 more times – 57 stitches.

Join MC. Work Garter Rows 1&2 once – 61 stitches.
With CC, work Garter Rows 1&2 once – 65 stitches. Break CC and continue working with MC.
With MC, work Garter Rows 1&2 once – 69 stitches.

Next Row (RS): K3, sl m, work row 1 of Lace Chart, working 12-stitch pattern repeat 2 times, sl m, k1, sl m, work row 1 of Lace Chart, working 12-stitch pattern repeat 2 times, sl m, k3 – 4 stitches increased.

Next Row (WS): K3, sl m, work row 2 of Lace Chart, working 12-stitch pattern repeat 2 times, sl m, k1, sl m, work row 2 of Lace Chart, working 12-stitch pattern repeat 2 times, sl m, k3.

Continue working as established, working rows 3–30 of Lace Chart – 129 stitches.

Join CC. Work Garter Rows 1&2 once – 133 stitches.
With MC, work Garter Rows 1&2 once – 137 stitches.
Break MC and continue working with CC.

Repeat Garter Rows 1&2 another 10 times – 177 stitches.

Join MC. Work Garter Rows 1&2 once – 181 stitches.
With CC, work Garter Rows 1&2 once – 185 stitches. Break CC.
With MC, work Garter Rows 1&2 once – 189 stitches.

Next Row (RS): K3, sl m, work row 1 of Lace Chart, working 12-stitch pattern repeat 7 times, sl m, k1, sl m, work row 1 of Lace Chart, working 12-stitch pattern repeat 7 times, sl m, k3 – 4 stitches increased.

Next Row (WS): K3, sl m, work row 2 of Lace Chart, working 12-stitch pattern repeat 7 times, sl m, k1, sl m, work row 2 of Lace Chart, working 12-stitch pattern repeat 7 times, sl m, k3.

Continue working as established, working rows 3–58 of Lace Chart – 305 stitches.

Note: While working on rows 31–58 of Lace Chart, work 12-stitch pattern repeat 9 times.

Border

Join CC. Work Garter Rows 1&2 once – 309 stitches.
With MC, work Garter Rows 1&2 once – 313 stitches.
Break MC and continue working with CC.

Repeat Garter Row 1&2 another 14 times – 369 stitches.

Finishing

Bind off all stitches.

Weave in ends, block to measurements.



Written instructions for Lace Chart

... – pattern repeat

Note: See Chart Legend for special abbreviations.

Row 1 (RS): M1L, k3, * p1, k2, p7, k2 *, p1, k3, M1R.

Row 2 (WS): K1, p3, k1, * p2, k7, p2, k1 *, p3, k1.

Row 3 (RS): M1L, p1, K2TOG, YO, k1, * p1, k1, YO, SSK, p5, K2TOG, YO, k1 *, p1, k1, YO, SSK, p1, M1R.

Row 4 (WS): K2, p3, k1, * p3, k5, p3, k1 *, p3, k2.

Row 5 (RS): M1L, p1, K2TOG, YO, k2, * p1, k2, YO, SSK, p3, K2TOG, YO, k2 *, p1, k2, YO, SSK, p1, M1R.

Row 6 (WS): K2, p4, k1, * p4, k3, p4, k1 *, p4, k2.

Row 7 (RS): M1L, p1, K2TOG, YO, k3, * p1, k3, YO, SSK, p1, K2TOG, YO, k3 *, p1, k3, YO, SSK, p1, M1R.

Row 8 (WS): P1, k1, p5, k1, * [p5, k1] 2 times *, p5, k1, p1.

Row 9 (RS): M1L, k1, p1, k3, K2TOG, YO, * p1, YO, SSK, k3, p1, k3, K2TOG, YO *, p1, YO, SSK, k3, p1, k1, M1R.

Row 10 (WS): P2, k1, p4, k2, * [k1, p4] 2 times, k2 *, k1, p4, k1, p2.

Row 11 (RS): M1L, k2, p1, k2, K2TOG, YO, p1, * p2, YO, SSK, k2, p1, k2, K2TOG, YO, p1 *, p2, YO, SSK, k2, p1, k2, M1R.

Row 12 (WS): K1, p2, k1, p3, k3, * k2, p3, k1, p3, k3 *, k2, p3, k1, p2, k1.

Row 13 (RS): M1L, p1, k2, p1, k1, K2TOG, YO, p2, * p3, YO, SSK, k1, p1, k1, K2TOG, YO, p2 *, p3, YO, SSK, k1, p1, k2, p1, M1R.

Row 14 (WS): K2, p2, k1, p2, k4, * k3, p2, k1, p2, k4 *, k3, p2, k1, p2, k2.

Row 15 (RS): M1L, p2, k2, p1, k2, p3, * YO, P2TOG, p2, k2, p1, k2, p3 *, YO, P2TOG, p2, k2, p1, k2, p2, M1R.

Row 16 (WS): K3, p2, k1, p2, k4, * k3, p2, k1, p2, k4 *, k3, p2, k1, p2, k3.

Row 17 (RS): M1L, p2, K2TOG, YO, k1, p1, k1, YO, SSK, p2, * p3, K2TOG, YO, k1, p1, k1, YO, SSK, p2 *, p3, K2TOG, YO, k1, p1, k1, YO, SSK, p2, M1R.

Row 18 (WS): k3, p3, k1, p3, k3, * k2, p3, k1, p3, k3 *, k2, p3, k1, p3, k3.

Row 19 (RS): M1L, p2, K2TOG, YO, k2, p1, k2, YO, SSK, p1, * p2, K2TOG, YO, k2, p1, k2, YO, SSK, p1 *, p2, K2TOG, YO, k2, p1, k2, YO, SSK, p2, M1R.

Row 20 (WS): P1, k2, p4, k1, p4, k2, * [k1, p4] 2 times, k2 *, [k1, p4] 2 times, k2, p1.

Row 21 (RS): M1L, k1, p1, K2TOG, YO, k3, p1, k3, YO, SSK, * p1, K2TOG, YO, k3, p1, k3, YO, SSK *, p1, K2TOG, YO, k3, p1, k3, YO, SSK, p1, k1, M1R.

Row 22 (WS): p2, [k1, p5] 2 times, k1, * [p5, k1] 2 times *, [p5, k1] 2 times, p2.

Row 23 (RS): M1L, k2, p1, k3, K2TOG, YO, p1, YO, SSK, k3, * p1, k3, K2TOG, YO, p1, YO, SSK, k3 *, p1, k3, K2TOG, YO, p1, YO, SSK, k3, p1, k2, M1R.

Row 24 (WS): P3, k1, p4, k3, p4, k1, * p4, k3, p4, k1 *, p4, k3, p4, k1, p3.

Row 25 (RS): M1L, k3, p1, k2, K2TOG, YO, p3, YO, SSK, k2, * p1, k2, K2TOG, YO, p3, YO, SSK, k2 *, p1, k2, K2TOG, YO, p3, YO, SSK, k2, p1, k3, M1R.

Row 26 (WS): [K1, p3] 2 times, k5, p3, k1, * p3, k5, p3, k1 *, p3, k5, [p3, k1] 2 times.

Row 27 (RS): M1L, p1, YO, SSK, k1, p1, k1, K2TOG, YO, p5, YO, SSK, k1, * p1, k1, K2TOG, YO, p5, YO, SSK, k1 *, p1, k1, K2TOG, YO, p5, YO, SSK, k1, p1, k1, K2TOG, YO, p1, M1R.

Row 28 (WS): K3, p2, k1, p2, k7, p2, k1, * p2, k7, p2, k1 *, p2, k7, p2, k1, p2, k3.

Row 29 (RS): M1L, p3, k2, p1, k2, p3, YO, P2TOG, p2, k2, * p1, k2, p3, YO, P2TOG, p2, k2 *, p1, k2, p3, YO, P2TOG, p2, k2, p1, k2, p3, M1R.

Row 30 (WS): K4, p2, k1, p2, k7, p2, k1, * p2, k7, p2, k1 *, p2, k7, p2, k1, p2, k4.

Row 31 (RS): M1L, p3, K2TOG, YO, k1, * p1, k1, YO, SSK, p5, K2TOG, YO, k1 *, p1, k1, YO, SSK, p3, M1R.

Row 32 (WS): k4, p3, k1, * p3, k5, p3, k1 *, p3, k4.

Row 33 (RS): M1L, p3, K2TOG, YO, k2, * p1, k2, YO, SSK, p3, K2TOG, YO, k2 *, p1, k2, YO, SSK, p3, M1R.

Row 34 (WS): P1, k3, p4, k1, * p4, k3, p4, k1 *, p4, k3, p1.

Row 35 (RS): M1L, YO, SSK, p1, K2TOG, YO, k3, * p1, k3, YO, SSK, p1, K2TOG, YO, k3 *, p1, k3, YO, SSK, p1, K2TOG, YO, M1R.

Row 36 (WS): P3, k1, p5, k1, * [p5, k1] 2 times *, p5, k1, p3.

Row 37 (RS): M1L, k3, p1, k3, K2TOG, YO, * p1, YO, SSK, k3, p1, k3, K2TOG, YO *, p1, YO, SSK, k3, p1, k3, M1R.

Row 38 (WS): P4, k1, p4, k2, * [k1, p4] 2 times, k2 *, [k1, p4] 2 times.

Row 39 (RS): M1L, YO, SSK, k2, p1, k2, K2TOG, YO, p1, * p2, YO, SSK, k2, p1, k2, K2TOG, YO, p1 *, p2, YO, SSK, k2, p1, k2, K2TOG, YO, M1R.

Row 40 (WS): K2, p3, k1, p3, k3, * k2, p3, k1, p3, k3 *, k2, p3, k1, p3, k2.

Row 41 (RS): M1L, p2, YO, SSK, k1, p1, k1, K2TOG, YO, p2, * p3, YO, SSK, k1, p1, k1, K2TOG, YO, p2 *, p3, YO, SSK, k1, p1, k1, K2TOG, YO, p2, M1R.

Row 42 (WS): K4, p2, k1, p2, k4, * k3, p2, k1, p2, k4 *, k3, p2, k1, p2, k4.

Row 43 (RS): M1L, p4, k2, p1, k2, p3, * YO, P2TOG, p2, k2, p1, k2, p3 *, YO, P2TOG, p2, k2, p1, k2, p4, M1R.

Row 44 (WS): K5, p2, k1, p2, k4, * k3, p2, k1, p2, k4 *, k3, p2, k1, p2, k5.

Row 45 (RS): M1L, p4, K2TOG, YO, k1, p1, k1, YO, SSK, p2, * p3, K2TOG, YO, k1, p1, k1, YO, SSK, p2 *, p3, K2TOG, YO, k1, p1, k1, YO, SSK, p4, M1R.

Row 46 (WS): P1, k4, p3, k1, p3, k3, * k2, p3, k1, p3, k3 *, k2, p3, k1, p3, k4, p1.

Row 47 (RS): M1L, k1, p3, K2TOG, YO, k2, p1, k2, YO, SSK, p1, * p2, K2TOG, YO, k2, p1, k2, YO, SSK, p1 *, p2, K2TOG, YO, k2, p1, k2, YO, SSK, p3, k1, M1R.

Row 48 (WS): P2, k3, p4, k1, p4, k2, * [k1, p4] 2 times, k2 *, [k1, p4] 2 times, k3, p2.

Row 49 (RS): M1L, k1, YO, SSK, p1, K2TOG, YO, k3, p1, k3, YO, SSK, * p1, K2TOG, YO, k3, p1, k3, YO, SSK *, p1, K2TOG, YO, k3, p1, k3, YO, SSK, p1, K2TOG, YO, k1, M1R.

Row 50 (WS): P4, [k1, p5] 2 times, k1, * [p5, k1] 2 times *, [p5, k1] 2 times, p4.

Row 51 (RS): M1L, k4, p1, k3, K2TOG, YO, p1, YO, SSK, k3, * p1, k3, K2TOG, YO, p1, YO, SSK, k3 *, p1, k3, K2TOG, YO, p1, YO, SSK, k3, p1, k4, M1R.

Row 52 (WS): [K1, p4] 2 times, k3, p4, k1, * p4, k3, p4, k1 *, p4, k3, [p4, k1] 2 times.

Row 53 (RS): M1L, p1, YO, SSK, k2, p1, k2, K2TOG, YO, p3, YO, SSK, k2, * p1, k2, K2TOG, YO, p3, YO, SSK, k2 *, p1, k2, K2TOG, YO, p3, YO, SSK, k2, p1, k2, K2TOG, YO, p1, M1R.

Row 54 (WS): K3, p3, k1, p3, k5, p3, k1, * p3, k5, p3, k1 *, p3, k5, p3, k1, p3, k3.

Row 55 (RS): M1L, p3, YO, SSK, k1, p1, k1, K2TOG, YO, p5, YO, SSK, k1, * p1, k1, K2TOG, YO, p5, YO, SSK, k1 *, p1, k1, K2TOG, YO, p5, YO, SSK, k1, p1, k1, K2TOG, YO, p3, M1R.

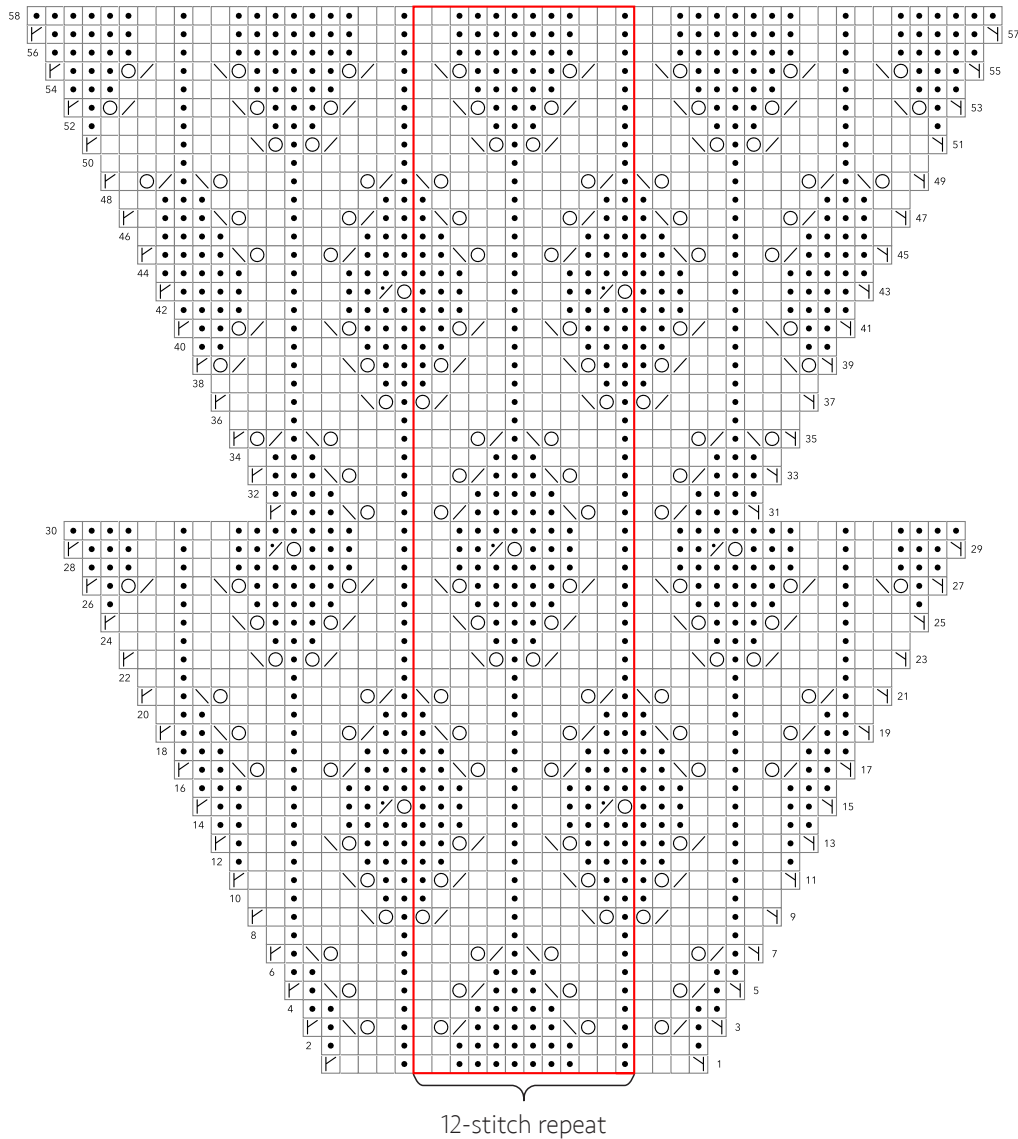
Row 56 (WS): K5, p2, k1, p2, k7, p2, k1, * p2, k7, p2, k1 *, p2, k7, p2, k1, p2, k5.

Row 57 (RS): M1L, p5, k2, p1, k2, p7, k2, * p1, k2, p7, k2 *, p1, k2, p7, k2, p1, k2, p5, M1R.

Row 58 (WS): K6, p2, k1, p2, k7, p2, k1, * p2, k7, p2, k1 *, p2, k7, p2, k1, p2, k6.



LACE CHART



LEGEND

□ Knit stitch on RS; purl stitch on WS

● Purl stitch on RS; knit stitch on WS

○ YO: Yarn over - 1 stitch increased

▧ K2TOG: Knit 2 stitches together – 1 stitch decreased with right slant

▨ SSK: Slip 1 stitch knitwise, slip 1 stitch knitwise, return 2 slipped stitches back to left needle and knit them together through back loops – 1 stitch decreased with left slant

▩ P2TOG: Purl 2 stitches together – 1 stitch decreased

▧ M1R: With left needle tip, pick up the thread between stitches from back to front. Knit lifted loop through the front loop – 1 stitch increased

▨ M1L: With left needle tip, pick up the thread between stitches from front to back. Knit lifted loop through the back loop – 1 stitch increased

□ Pattern repeat